



WISCONSIN CROP PROGRESS

June 24, 2013

Vol. 13, No. 12

Break in Weather Proves Brief

This week started off warm and dry across much of the state, with 3.7 days suitable for fieldwork statewide. Farmers worked into the night to try and finish up the first cutting of hay, late-season planting, nitrogen applications and weed control. Reporters commented that dry hay was finally made in some areas, but farmers were still working around wet spots. Severe weather over the weekend brought field activities to a halt once again. Thunderstorms dumped rain over much of the state, and some reporters noted up to four inches in a single night. High winds and heavy rain reportedly lodged crops in some areas. Flooding was reported in Taylor, Crawford, Richland, Columbia, Dane and Green Counties. Many reporters commented that it's now too late in the season to complete plantings as intended. Corn planting has ceased for most, and some soybean planting may be prevented as well due to wet conditions. Farmers were reportedly considering alternative forages as feed supplies remain tight.

Across the reporting stations, average temperatures last week were normal to 3 degrees above normal. Average high temperatures ranged from 77 to 84 degrees, while average low temperatures ranged from 56 to 62 degrees. Precipitation totals ranged from 0.93 inches in Green Bay to 2.60 inches in Madison. If you are interested in further weather data, please reference the following sites:

- <http://www.noaa.gov/>
- <http://www.aos.wisc.edu/~sco/>
- <http://www.cocorahs.org/>
- <http://www.weather.gov/>

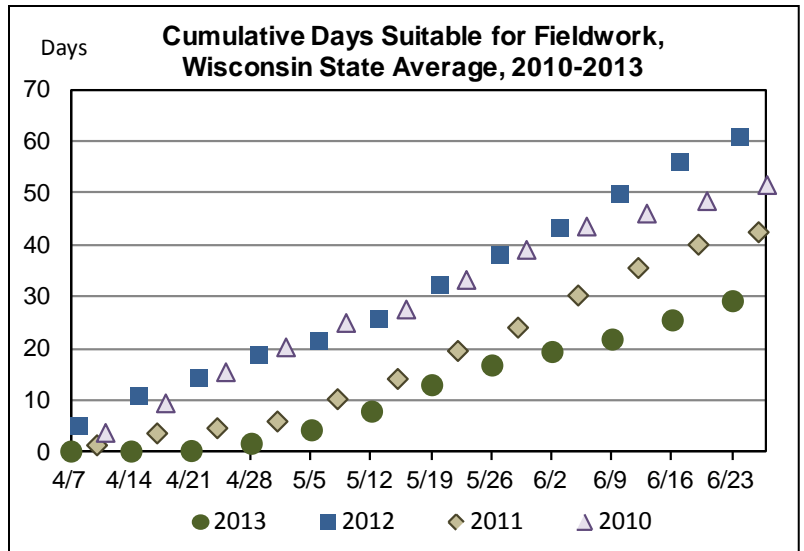
Corn was 92 percent planted, 84 percent emerged, and 12 inches tall on average. Some reporters noted corn was yellow or stunted due to moisture stress. However, the crop was reportedly growing well due to warmer overnight temperatures.

Soybeans were 85 percent planted and 69 percent emerged.

Oats were 28 percent headed. Oats and other small grains were being chopped for forage in Crawford and Grant Counties.

First cutting alfalfa was 61 percent harvested. Reports of quality were mixed, as some alfalfa has developed past the window of best feed quality before it could be cut. The second crop was reportedly coming in quickly.

Reporters from Waupaca and Dane Counties noted that excess moisture was affecting **strawberry** quality. **Apples** and other **fruit trees** were reportedly showing a heavy fruit set across the state.



Wisconsin Crop Conditions as of June 23, 2013

| | Very Poor | Poor | Fair | Good | Excellent |
|----------|-----------|------|------|------|-----------|
| | Percent | | | | |
| Pasture | 0 | 3 | 16 | 54 | 27 |
| Corn | 2 | 6 | 32 | 43 | 17 |
| Soybeans | 1 | 5 | 32 | 48 | 14 |
| Oats | 0 | 4 | 27 | 50 | 19 |

Source: USDA, NASS, Wisconsin Field Office

Wisconsin Crop Progress, June 23, 2013

| Crop and percent of acreage | District average | | | | | | | | | State average | | | |
|-----------------------------|------------------|----|----|----|----|----|----|----|----|---------------|-----------|-----------|----------------|
| | NW | NC | NE | WC | C | EC | SW | SC | SE | This week | Last week | Last year | 5-year average |
| | Percent | | | | | | | | | Percent | | | |
| Corn planted | 89 | 74 | 93 | 92 | 83 | 94 | 98 | 97 | 93 | 92 | 87 | 100 | 100 |
| Corn emerged | 80 | 55 | 87 | 79 | 78 | 84 | 94 | 94 | 84 | 84 | 75 | 100 | 100 |
| Average corn height (in.) | 9 | 5 | 9 | 8 | 12 | 8 | 16 | 19 | 13 | 12 | 8 | 27 | 20 |
| Soybeans planted | 79 | 55 | 87 | 88 | 79 | 87 | 91 | 94 | 84 | 85 | 72 | 100 | 99 |
| Soybeans emerged | 53 | 36 | 58 | 64 | 66 | 70 | 78 | 87 | 71 | 69 | 49 | 100 | 96 |
| Oats headed | 4 | 0 | 16 | 12 | 33 | 12 | 62 | 70 | 20 | 28 | 11 | 87 | 52 |
| First cutting hay | 51 | 24 | 79 | 45 | 45 | 76 | 83 | 85 | 68 | 61 | 36 | 100 | 87 |

Source: USDA, NASS, Wisconsin Field Office.

Days Suitable for Fieldwork and Soil Moisture Conditions, June 23, 2013

| Item | District average | | | | | | | | | State average | | |
|------------------|------------------|-----|-----|-----|-----|-----|-----|-----|-----|---------------|-----------|-----------|
| | NW | NC | NE | WC | C | EC | SW | SC | SE | This week | Last week | Last year |
| | Days | | | | | | | | | Days | | |
| Days Suitable | 3.6 | 3.7 | 3.4 | 3.5 | 3.2 | 3.8 | 4.5 | 3.6 | 4.2 | 3.7 | 3.7 | 5.0 |
| | Percent | | | | | | | | | Percent | | |
| Topsoil Moisture | | | | | | | | | | | | |
| Very Short | 0 | 0 | 0 | 0 | 0 | 0 | 0 | 0 | 0 | 0 | 0 | 21 |
| Short | 1 | 0 | 0 | 0 | 0 | 3 | 2 | 1 | 1 | 1 | 1 | 26 |
| Adequate | 45 | 24 | 71 | 73 | 41 | 41 | 64 | 75 | 73 | 57 | 60 | 44 |
| Surplus | 54 | 76 | 29 | 27 | 59 | 56 | 34 | 24 | 26 | 42 | 39 | 9 |
| Subsoil Moisture | | | | | | | | | | | | |
| Very Short | 0 | 0 | 0 | 0 | 0 | 0 | 1 | 0 | 0 | 0 | 0 | n.a. |
| Short | 0 | 0 | 12 | 1 | 0 | 0 | 2 | 0 | 1 | 1 | 2 | n.a. |
| Adequate | 62 | 22 | 60 | 87 | 65 | 52 | 72 | 79 | 84 | 66 | 75 | n.a. |
| Surplus | 38 | 78 | 28 | 12 | 35 | 48 | 25 | 21 | 15 | 33 | 23 | n.a. |

Source: USDA, NASS, Wisconsin Field Office.

Wisconsin Crop Progress

Selected Quotes from Farm Reporters and County Ag Agents

All comments are used in creating this report, but only a few are published below.

RUSK-G.P.: A good week for field work, lots of hay down and a mad dash to get the last of the planting done. Still really wet but some better temps are improving the appearance of crops. First crop is late this year with that showing up as relatively low quality. Spraying is ongoing with lots of weeds.

ASHLAND-C.B.: Pastures starting to improve after some warmer temperatures this week. Many producers starting to chop first crop hay, plus a small amount of baling activity in the area. On Friday, we received another 3-5 inches of rain throughout most of our area. Grain crops are yellowing in the low areas of fields.

SHAWANO-B.R.: A lot of mud planting done this week as farmers went around wet spots in the field to get done whatever they could before more rain arrived. With rain present this weekend, most will not plant anything that is left-it is just too late. Corn is looking quite good at this point. Soybeans are emerging extremely slow with some taking four and five weeks to come out of the ground and it is very uneven for stand counts. Going around water spots when cutting alfalfa.

BUFFALO-R.S.: Well, we got our wish: four consecutive days without rain to make first crop hay. The quality was average - it lacked a good smell. Still some corn to plant for silage and hay to be made.

MONROE-M.Y.: We had 6 consecutive days with no rain and a few fields were just getting dry enough to work. Now we got 1.1 inches rain this morning.

MARQUETTE-D.B.: Rain kept anything from getting done.

PORTAGE-D.Z.: Finally got enough days without rain to get some planting done and then Friday it rained again.

KEWAUNEE-T.S.: The recent rains and the warmer temperatures have really boosted plant growth in this area. Nearly all the corn planted has emerged and is looking good. There have been some issues in this area with corn being planted at inconsistent depths and some issues with poor germination. Some areas of some fields are showing lighter color. The corn may outgrow this, depending on the type of nitrogen that has been or will be applied. The soybeans have really shown a lot of growth. In some fields, herbicides have already been applied to combat the weeds. The oat crop is one

of the best looking crops right now. It has really thrived with the mainly cooler and damper weather that has been the norm. The same also goes for the winter wheat. While the crop is nearly all headed out, it is still growing. And while most of the first crop hay has been harvested, some still remains. The hay that is still in the field will most likely be baled. The weather for drying has not been good, so it may be a few more days before the remainder of the alfalfa can be taken off. The last of the first crop has been very heavy, with high yields. Unfortunately, the quality is dropping with the coarse stems that exist. The second crop is really growing back fast, with the wetter and now warmer weather.

CRAWFORD-J.B.: The break in rain early last week helped some area farmers complete soybean planting and harvesting some of the first cutting of hay and chopping some small grains as forage. Wet and cool conditions have prevented farmers from applying herbicides which has resulted in a lot of weed competition in some fields, foxtail, etc. Vegetable crops have been planted and apple trees have been setting fruit as have other fruit trees. However, heavy rains and high winds experienced Friday morning and heavy rain from Friday night through Sunday morning have caused flash flooding in all tributaries in Crawford County and caused extensive flooding in the Kickapoo River Valley. Crops in fields adjacent to any tributaries experienced damage which also affected pastures, fencings etc. This flash flooding has affected roads being washed out along with some mudslides closing some roads.

RICHLAND-J.C.: There will be a large amount of acres that will not be planted due to wet field conditions. Of the acres that are planted, there has been some loss due to localized flooding.

DANE-L.J.: Planting is basically done except for several cases of replanting due to flooding. Weeds are evident in some fields. No problems with diseases that I have seen, except downy mildew in hop yards. The drought is over.

WASHINGTON-G.S.: A lot of hay was made last week, along with more corn and soybean planting, provided the fields were dry enough to get in. It is still plenty wet in both Washington and Ozaukee Counties.

Wisconsin Weekly Weather, Selected Cities, Ending as of 7:00 a.m. on June 23, 2013

| City | Temperature | | | | | | Growing degree days (modified base 50) 1/ | | Precipitation | | | | |
|------------|-------------|-----------|-----------|----------|------|-------------------------|---|---------------------------|---------------|--------------|---------------------------|--------------|-------------------------|
| | Avg. max. | Avg. min. | High max. | Low min. | Avg. | Avg. dep. from normal * | Mar. 1 to Jun. 22 | Mar. 1 To Jun. 22 normal* | Last Week | Since Jun. 1 | Jun. 1 dep. from normal * | Year to date | Year dep. from normal * |
| Eau Claire | 80 | 59 | 85 | 54 | 69 | +2 | 702 | 782 | 2.30 | 3.85 | +0.75 | 23.90 | +10.48 |
| Green Bay | 78 | 56 | 86 | 45 | 67 | +1 | 686 | 697 | 0.93 | 2.96 | +0.56 | 16.72 | +4.70 |
| La Crosse | 84 | 62 | 90 | 56 | 73 | +3 | 826 | 889 | 2.56 | 4.40 | +1.64 | 23.32 | +9.61 |
| Madison | 81 | 60 | 86 | 47 | 70 | +3 | 831 | 877 | 2.60 | 5.92 | +3.07 | 26.01 | +11.72 |
| Milwaukee | 77 | 58 | 85 | 49 | 67 | 0 | 668 | n.a. | 1.42 | 3.65 | +1.19 | 23.16 | +7.72 |

1/ Formula used: GDD = (daily maximum (86°) + daily minimum (50°))/2-50°; where 86° is used if the maximum exceeds 86° and 50° is used if the minimum falls below 50°. *Normal based on 1971-2000 data. Source: NCEP/NOAA Climate Prediction Center <http://www.cpc.ncep.noaa.gov>. n.a.=not available. T=trace. Source: USDA, NASS, Wisconsin Field Office.



USDA, NASS, Wisconsin Field office
P.O. Box 8934
Madison, WI 53708-8934

(608)224-4848
<http://www.nass.usda.gov/wi/>
Greg Bussler, State Statistician

This report has been made possible through the cooperative efforts of the U.S. Department of Agriculture, and the Wisconsin Department of Agriculture, Trade and Consumer Protection and the National Weather Service.