



Wisconsin Crop Progress

October 31, 2012

Vol. 12, No. 30

Mild, Rainy Week Boosts Fall Seedings

Harvest slowed this week as wet weather kept combines out of fields. Temperatures were well above average, with daytime highs in the 70s reported for much of the state. Thunderstorms rolled through midweek, with wind and hail damage to corn reported in Oneida and Taylor counties. Soil moistures rose to 45 percent short to very short statewide, compared to 55 percent last week and 79 percent two weeks ago. The moisture and warm temperatures reportedly boosted growth of winter wheat, rye and other fall-planted cover crops. However, many reporters noted that subsoil moistures remain dryer than usual going into winter and more precipitation is needed. There were 3.6 days suitable for fieldwork.

Across the reporting stations, average temperatures this week were 2 to 6 degrees above normal. Average high temperatures ranged from 57 to 62 degrees, while average low temperatures ranged from 40 to 44 degrees. Precipitation totals ranged from 0.52 inches in Green Bay to 1.74 inches La Crosse. If you are interested in further weather data, please reference the following sites:

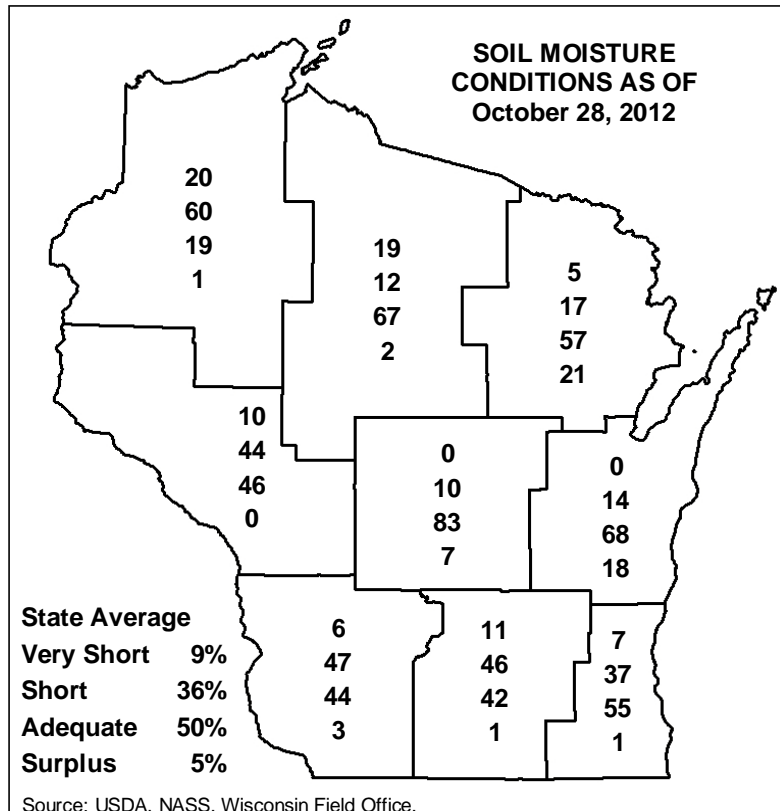
- <http://www.noaa.gov/>
- <http://www.aos.wisc.edu/~sco/>
- <http://www.cocorahs.org/>
- <http://www.weather.gov/>

Corn was 77 percent harvested for grain statewide. Reporters statewide noted that storage facilities and silos are starting to fill up. Yield reports continued to be highly variable.

Fall tillage was 47 percent complete. Liquid manure applications were ongoing.

A reporter from Waupaca County noted that both the **squash** and **fall raspberry** crop were excellent this year.

Please note: This week's Crop Progress and Condition Report was delayed due to the closure of the USDA's Washington, DC Headquarters during Hurricane Sandy.

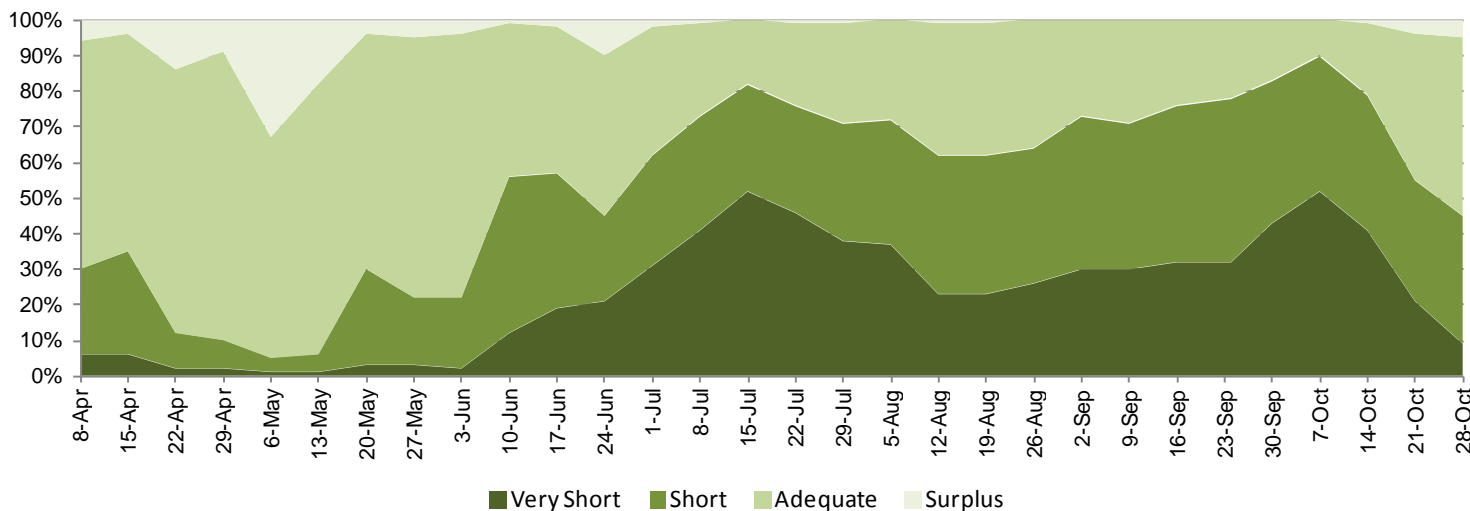


Wisconsin Crop Conditions as of October 28, 2012

Item	V.-poor	Poor	Fair	Good	Excellent
Pasture	29	36	27	7	1

Source: USDA, NASS, Wisconsin Field Office.

Soil Moisture Ratings Wisconsin State Average, April 8 - Oct. 28, 2012



Wisconsin Crop Progress, October 28, 2012

Crop and percent of acreage	District average									State average			
	NW	NC	NE	WC	C	EC	SW	SC	SE	This week	Last week	Last year	5-year average
Corn harvested for grain	85	91	68	79	71	58	81	80	73	77	66	50	44
Fall tillage completed	46	67	30	38	60	43	53	41	57	47	37	38	32

Source: USDA, NASS, Wisconsin Field Office.

Wisconsin Crop Progress

Selected Quotes from Farm Reporters and County Ag Agents

All comments are used in creating this report, but only a few are published below.

CHIPPEWA-T.P.: Rain during the week has slowed field work but made soil sampling easier.

ASHLAND-C.B.: Rain all week. Topsoil moisture conditions are improving.

CLARK-R.H.: Harvesting was slow this week with much needed widespread rainfall. There was corn harvested between rain showers. With a few dry days harvest and tillage activity will again be brisk. The rainfall will help build soil moisture before freeze up.

OCONTO-N.S.: The 3.5 plus inches of rain received in much of the area over the past 10 to 14 days slowed down the harvest. Conditions prior were becoming too dry. This weekend harvest got under way again. Corn and soybean yields have varied, but overall look good. Some areas reporting excellent yields. A lot of manure is being hauled and fall tillage continues.

SHAWANO-T.B.: The wet week brought most harvesting and all tillage operations to a halt. Fifth crop hay harvest was average. Fall tillage and winter wheat planting stayed the same as last week. Winter crops emerged very well this past week and are off to a great start.

EAU CLAIRE-D.S.: We had 1.5 inches of rain. Rye is 2.0 inches tall and looks good. The corn averaged 200 bushels to the acre. A pleasant surprise. Soybeans 54 bushels to the acre. The subsoil moisture is still very dry.

LACROSSE-I.H.: Farmers have been putting in long hours getting the corn crop off. Yields have been better than normal on good soils; on poorer soils yields have not been up to normal. With a deficit of moisture of more than six inches this year, crops really depended on timely rains to produce. Fall tillage has begun now that most of the crops are off the fields. Rye cover crops are beginning to emerge.

TREMPEALEAU-D.D.: Much needed rains came and most soaked in. My guess is we have a record number of acres seeded to winter cover crops of some kind. Early harvests coupled with some feed shortages were motivating factors. Most of these crops have emerged well. Most apple harvests in this area were discouraging.

WAUPACA-D.H.: It's been too wet the last two weeks to do much of anything.

WAUSHARA-K.W.: Reports show corn yields range from 5 bushels per acre to around 260 bushels per acre for irrigated corn.

FOND DU LAC-B.B.: The 0.75 inches of rain for the period was enough to limit fieldwork to manure applications. Winter crops are looking good. However, alfalfa is looking spotty going into dormancy.

SHEBOYGAN-E.P.: Fall ground work much easier now with the added moisture. A lot of corn not harvested yet after much rain.

GRANT-J.R.: Field work is slowing due to the rain continuing but no one is complaining about the much needed moisture before the ground freezes.

DANE-J.K.: Continuous rain has stopped most field work except for a couple days. Harvest continues some, mostly big farmers. Fifth crop hay is long gone. Fall tillage has come to an end except where crops are to come off yet. Most planting done for winter crops. Winter crops are really coming now with warmer weather and nights.

GREEN-M.M.: Soybean harvest is complete and corn harvest about 90 percent complete. Overall yields of both crops will be down 40 to 60 percent from the drought. Recent rains have enabled winter wheat to germinate and have started a much needed recharge of the soil moisture. Much more rain will be needed this fall and next spring as subsoil moisture levels are still extremely dry. Many farmers removing corn stover for feed this year as they are short on forages.

WAUKESHA-D.W.: Beans are done. Yield is about 40 bushels per acre. Corn harvest is going well with yields all the way from 20 to 145 bushels per acre.



USDA, NASS, Wisconsin Field Office
P.O. Box 8934
Madison, WI 53708-8934
(608) 224-4848
<http://www.nass.usda.gov/wi/>

Robert J. Battaglia
Director

This report has been made possible through the cooperative efforts of the U.S. Department of Agriculture, and the Wisconsin Department of Agriculture, Trade and Consumer Protection, and the National Weather Service.

Wisconsin Weekly Weather, Selected Cities, Ending as of 7:00 a.m. on October 28, 2012

City	Temperature						Growing degree days (modified base 50) 1/		Precipitation				
	Avg. max.	Avg. min.	High max.	Low min.	Avg.	Avg. dep. from normal *	Mar. 1 to Oct. 27	Mar. 1 To Oct. 27 normal*	Last Week	Since Sep. 1	Sep. 1 dep. from normal *	Year to date	Year dep. from normal *
Eau Claire	57	40	69	25	49	+5	3255	2581	1.14	2.55	-3.11	21.71	-7.23
Green Bay	60	40	72	27	50	+5	3127	2438	0.52	6.00	+1.09	27.93	+2.77
La Crosse	61	44	72	29	52	+5	3590	2925	1.74	4.47	-0.78	23.46	-5.14
Madison	62	42	76	24	52	+6	3522	2885	1.07	5.89	+0.99	22.86	-5.71
Milwaukee	60	42	76	32	51	+2	3367	n.a.	1.05	5.21	-0.16	25.06	-4.42

1/ Formula used: GDD = (daily maximum (86°) + daily minimum (50°))/2-50°; where 86° is used if the maximum exceeds 86° and 50° is used if the minimum falls below 50°. *Normal based on 1971-2000 data. Source: NCEP/NOAA Climate Prediction Center <http://www.cpc.ncep.noaa.gov>. n.a.=not available. T=trace. Source: USDA, NASS, Wisconsin Field Office.