



# Wisconsin Crop Progress

August 13, 2012

Vol. 12, No. 19

## Cool Weather Relieves Stress on Crops, Livestock

This week brought cool, almost fall-like weather and scattered showers. Temperatures were below normal at all reporting stations for the first time since the week ending April 29. Precipitation was concentrated across the central and east parts of the state. Crops showed improvement this week where rains were received. The spottiness of recent rains has produced wide variations in crop condition and moisture stress from county to county and field to field. Yearly and seasonal precipitation totals remain below normal at all reporting stations except Green Bay. Reporters commented that yields have been adversely impacted by drought conditions. Pasture condition was slowly starting to improve, with 59 percent of pastures in poor to very poor condition statewide, compared to 66 percent last week. Soil moistures also improved slightly, with 38 percent of the state at adequate to surplus this week, compared to 28 percent last week. The dry soil conditions make continued timely rains critical to crop maturity. There were 5.3 days suitable for fieldwork.

Across the reporting stations, average temperatures this week were 1 to 5 degrees below normal. Average high temperatures ranged from 77 to 79 degrees, while average low temperatures ranged from 53 to 63 degrees. Precipitation totals ranged from 0.04 inches in La Crosse to 2.04 inches in Green Bay. If you are interested in further weather data, please reference the following sites:

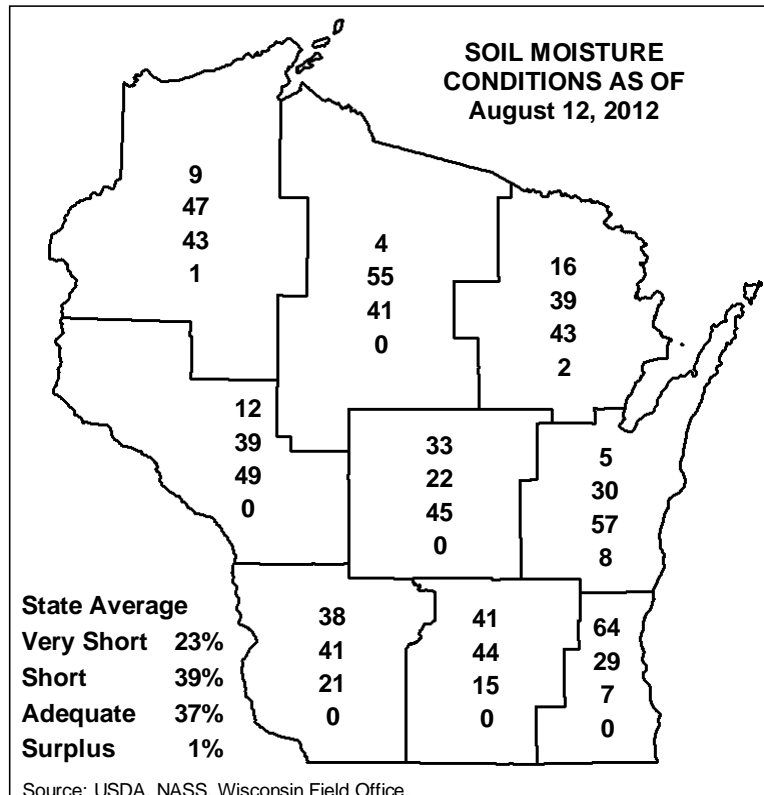
- <http://www.noaa.gov/>
- <http://www.aos.wisc.edu/~sco/>
- <http://www.cocorahs.org/>
- <http://www.weather.gov/>

**Corn** was 97 percent silked, 42 percent in dough stage and 6 percent denting statewide. Reporters commented that the extreme heat and drought have contributed to poor pollination and kernel fill in many areas. Small amounts of corn **silage** have been harvested around the state, either due to drought damage or to supplement feed supplies for cattle. Reporters anticipate that mature corn silage harvest will begin well ahead of normal.

**Soybeans** were 96 percent blooming and 81 percent setting pods this week. Cooler weather and rainfall have reportedly helped increase pod fill and decrease insect pressure. Spider mite problems were reported in Clark, Fond Du Lac, Kewaunee, Sauk and Vernon Counties.

**Oats** were 91 percent harvested for grain. Yield reports this week ranged from 50-100 bushels per acre and straw tonnage was reportedly high.

**Third cutting hay** was 88 percent harvested, and the fourth cutting was 11 percent harvested. Third crop yields were reportedly less than normal. Reporters noted that recent rains should up the tonnage of the fourth crop where received.

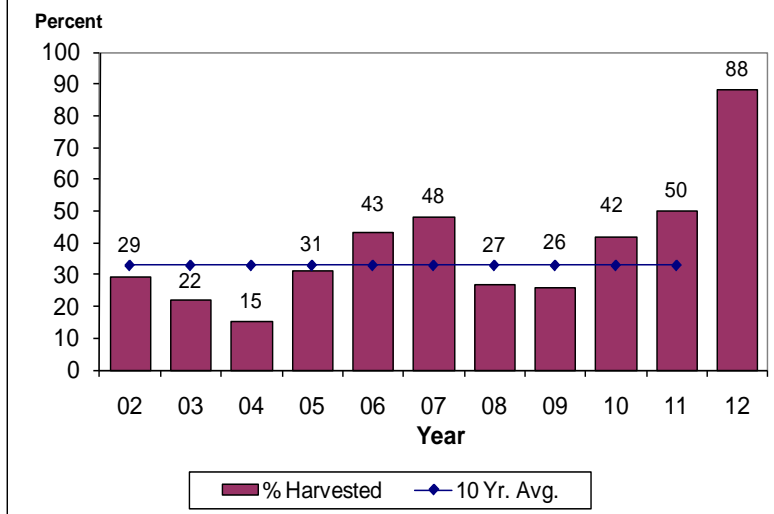


## Wisconsin Crop Conditions as of August 12, 2012

Item	V.-poor	Poor	Fair	Good	Excellent
	Percent				
Pasture	29	30	29	11	1
Corn	17	23	26	26	8
Soybeans	9	18	32	32	9

Source: USDA, NASS, Wisconsin Field Office.

## Progress of Third Crop Hay Harvested Wisconsin, Aug. 12, 2002-2012



## Wisconsin Crop Progress, August 12, 2012

Crop and percent of acreage	District average									State average			
	NW	NC	NE	WC	C	EC	SW	SC	SE	This week	Last week	Last year	5-year average
Corn silked	98	96	100	98	98	95	94	99	95	97	93	93	91
Corn in dough stage	36	56	42	46	37	36	51	43	19	42	25	31	28
Corn in dent stage	2	2	7	11	2	2	14	5	1	6	1	0	2
Soybeans blooming	95	98	100	98	99	94	92	100	92	96	92	93	91
Soybeans setting pods	79	87	91	81	68	80	69	97	69	81	64	69	66
Oats Harvested	90	83	98	98	96	79	99	99	100	91	83	58	63
Third cutting hay	86	80	98	92	82	89	95	85	71	88	80	50	38
Fourth cutting hay	6	0	15	9	8	18	13	13	6	11	n.a.	0	0

Source: USDA, NASS, Wisconsin Field Office.

# Wisconsin Crop Progress

## Selected Quotes from Farm Reporters and County Ag Agents

All comments are used in creating this report, but only a few are published below.

**CHIPPEWA-T.P.:** Leafhopper populations are declining. Soybean Aphid populations are very low. Rainfall last week will help the corn and soybeans for another week or so.

**WASHBURN-P.H.:** Good third crop alfalfa. Soybeans filling pods. Some corn looks good but corn on lighter soils had pollination and kernel fill problems.

**ASHLAND-C.B.:** Some rains in the last week. Pastures improving a little.

**ONEIDA-P.L.:** Blight is evident in the potato and tomato crop. Fall weeds are growing well. Golden rod and rag weed are especially present and are presenting pollen problems for allergy sufferers. We had scattered showers resulting in up to an inch of rain in places around the county. It is just enough to keep things green. Hay harvest is short on quantity, but good on quality. Oat harvest is beginning to pick up as the weather is cooperating. We have had some very heavy dews in the morning. The farmers have to wait until the sun dries things out. The afternoons have been great. The oat yields are pretty good. I would say average to a little above average. The straw is short. This helped keeping the grain from lodging. I have reports of the best local sweet corn crop in years with both quantity and quality. Blackberries are ready for picking.

**SHAWANO-J.N.:** Things are looking good up in the northern parts of the state.

**JACKSON-T.W.:** Some light but decent rain will help grain fill, however for much of the area the dry conditions have already reduced yields significantly.

**TREMPEALEAU-J.H.:** The county received much needed rain this week providing temporary relief for most crops. Pastures are still dormant. Hay fields being sprayed for insects. A lot of CRP released for managed or emergency haying.

**JUNEAU-J.W.:** The county has received some moisture and the temperatures have come down to more reasonable levels but it appears the damage has been done. The extreme heat lead to poor pollination of corn, reduced yields for third and fourth cuttings of alfalfa. Soybeans could still produce a crop but that will vary significantly. Overall wheat yields were pretty good. Many livestock owners are looking for hay. Most of them appear to be about 50 percent short of meeting their needs.

**WAUSHARA-K.W.:** Received 1.0 inch of rain on August 9, too late to help corn pollination, should help with grain fill on

corn that was able to pollinate, should also help soybean fill, doubt it will be enough to help much with regrowth on hay and pasture.

**FOND DU LAC-B.B.:** Received 1.55 inches rain for the period. Alfalfa continues its recovery and may yet produce a fair fourth crop. Pastures are starting to put on some growth and if we can muster two inches of rain per month for the rest of the growing season we should see good grazing conditions for September and October. Soybeans are averaging 24 pods per plant with 50 percent of the pods bearing two beans and 50 percent bearing three beans per pod. The die is cast with the corn as well- one ear per stalk and 70 percent kernel fill on the low and heavy soils with sporadic kernel fill on the light soils.

**SHEBOYGAN-E.P.:** No combines or grain trucks in oat fields which were planted in April. Oat fields were all sprayed for weeds. Now grass is taking over after the rain. Good oats will be lost completely.

**GRANT-E.B.:** Neighbor decided to try chopping for silage and it had a yield of 12 bushels per acre. No corn kernels had developed as the rain was too late.

**DANE-F.P.:** More rain needed for everything.

**DODGE-R.H.:** With the rain we have been getting pastures and lawns have been greening up.

**KENOSHA-R.R.:** A lot of spider mites, not too many Japanese beetles.

**OZAUKEE-K.A.:** Crops responded very well to the rain that came 1.5-2.8 inches in a 3 day time span. Sudan grass growing very fast 6-8 inches tall. Corn pollinated very well, some small cobs on light soil - yield unknown as of now. Beans are looking good, pods setting and still blooming.



USDA, NASS, Wisconsin Field Office  
P.O. Box 8934  
Madison, WI 53708-8934  
(608) 224-4848  
<http://www.nass.usda.gov/wi/>

**Robert J. Battaglia**  
Director

This report has been made possible through the cooperative efforts of the U.S. Department of Agriculture, and the Wisconsin Department of Agriculture, Trade and Consumer Protection, and the National Weather Service.

## Wisconsin Weekly Weather, Selected Cities, Ending as of 7:00 a.m. on August 12, 2012

City	Temperature						Growing degree days (modified base 50) 1/		Precipitation				
	Avg. max.	Avg. min.	High max.	Low min.	Avg.	Avg. dep. from normal *	Mar. 1 to Aug. 11	Mar. 1 To Aug. 11 normal*	Last Week	Since Jun. 1	Jun. 1 dep. from normal *	Year to date	Year dep. from normal *
Eau Claire	79	53	86	44	66	-5	2361	1765	0.63	6.46	-3.32	18.23	-1.80
Green Bay	77	56	86	53	67	-2	2282	1639	2.04	10.07	+1.95	20.62	+2.85
La Crosse	79	57	90	49	68	-5	2608	1976	0.04	6.79	-2.91	18.33	-2.26
Madison	79	57	92	51	68	-3	2542	1922	0.59	5.04	-4.46	16.12	-4.81
Milwaukee	79	63	91	56	71	-1	2386	n.a.	1.16	5.75	-2.70	18.39	-2.99

1/ Formula used: GDD = (daily maximum (86°) + daily minimum (50°))/2-50°; where 86° is used if the maximum exceeds 86° and 50° is used if the minimum falls below 50°. \*Normal based on 1971-2000 data. Source: NCEP/NOAA Climate Prediction Center <http://www.cpc.ncep.noaa.gov>. n.a.=not available. T=trace. Source: USDA, NASS, Wisconsin Field Office.