



Crop Progress and Condition



NATIONAL AGRICULTURAL STATISTICS SERVICE

United States Department of Agriculture • Washington, DC 20250

Northwest Regional Field Office • Olympia, WA 98507

Ag Statistics Hotline: 1-800-727-9540 • www.nass.usda.gov

Released: April 21, 2025
Week Ending: April 20, 2025

In Cooperation with...

- University of Idaho Extension
- Idaho State Department of Agriculture
- Oregon State University Extension Service
- Oregon Department of Agriculture
- Washington State University Extension
- Washington State Department of Agriculture
- USDA, Farm Service Agency
- USDA, Natural Resources Conservation Service

Regional Contacts

Phone: 1-800-435-5883

Email: nassrfonwr@usda.gov

- Washington – Dennis Koong, Regional Director
- Idaho – Ben Johnson, State Statistician
- Oregon – Dennis Koong, Regional Director
- Alaska – Andrew Brosier, State Statistician

This report contains the results from the **Crop Progress and Condition** weekly survey. The data collected each week is from respondents across the region whose occupations provide them opportunities to discuss agricultural production with farmers in their counties as well as to make visual observations. We thank all who have contributed to this report.

The USDA NASS National Crop Progress release is a more detailed report including crop progress and condition at the National level. You can locate that release [here](#).

Week Ending: April 20, 2025

According to the National Agricultural Statistics Service, there were 6.0 days suitable for fieldwork in Idaho for the week. The weather was dry and farming activity continued. In Oregon, there were 5.6 days suitable for fieldwork. Temperatures warmed up and windy conditions delayed spraying activity. In Washington, there were 6.4 days suitable for fieldwork with good weather for planting progress.

Soil Moisture Condition — Idaho, Oregon, and Washington: Week Ending 04/20/25

Item and State	Very short	Short	Adequate	Surplus
	(percent)	(percent)	(percent)	(percent)
Topsoil moisture				
Idaho	-	10	84	6
Oregon	3	9	78	10
Washington.....	8	16	73	3
Subsoil moisture				
Idaho	-	9	87	4
Oregon	3	7	77	13
Washington.....	9	14	74	3

- Represents zero.

Pasture, Range, and Crop Condition — Idaho, Oregon, and Washington: Week Ending 04/20/25

Crop and State	Very poor	Poor	Fair	Good	Excellent
	(percent)	(percent)	(percent)	(percent)	(percent)
Pasture and range					
Idaho.....	2	11	32	37	18
Oregon.....	10	10	30	40	10
Washington.....	2	6	30	61	1
Winter wheat					
Idaho.....	-	2	28	68	2
Oregon.....	3	9	32	45	11
Washington.....	3	9	19	60	9
Winter canola					
Idaho.....	-	3	24	73	-
Washington.....	-	18	72	10	-

- Represents zero.

Crop Progress — Idaho: Week Ending 04/20/25

Crop and activity	Percent completed			
	This week	Last week	Last year	5 Year average
Spring wheat planted	54	38	53	43
Spring wheat emerged	15	5	9	7
Barley planted.....	52	34	51	41
Barley emerged	13	4	7	7
Oats planted	36	15	35	31
Oats emerged	5	1	4	7
Spring canola planted	21	18	(NA)	(NA)
Spring canola emerged	1	(NA)	(NA)	(NA)
Potatoes planted	22	16	21	22
Onions planted.....	77	55	88	85
Onions emerged	23	13	27	23
Sugarbeets planted.....	83	59	36	54
Sugarbeets emerged	10	(NA)	(NA)	(NA)
Field corn planted	3	-	9	4
Dry edible beans planted	8	1	14	(NA)
Dry edible peas planted	39	17	42	39
Dry edible peas emerged	7	(NA)	4	(NA)

- Represents zero.

(NA) Not available.

Crop Progress — Oregon: Week Ending 04/20/25

Crop and activity	Percent completed			
	This week	Last week	Last year	5 Year average
Spring wheat planted	83	70	86	80
Spring wheat emerged	36	24	27	35
Barley planted.....	80	67	76	62
Barley emerged	27	15	20	24
Oats planted	62	35	70	57
Oats emerged	14	2	17	22
Potatoes planted	60	51	66	58
Potatoes emerged.....	11	4	13	(NA)
Onions planted.....	75	53	85	78
Onions emerged	25	15	30	29
Sugarbeets planted.....	75	45	94	87
Sugarbeets emerged	10	-	29	(NA)
Field corn planted	18	5	18	20
Dry edible peas planted	75	65	70	(NA)
Dry edible peas emerged	27	10	25	24

- Represents zero.

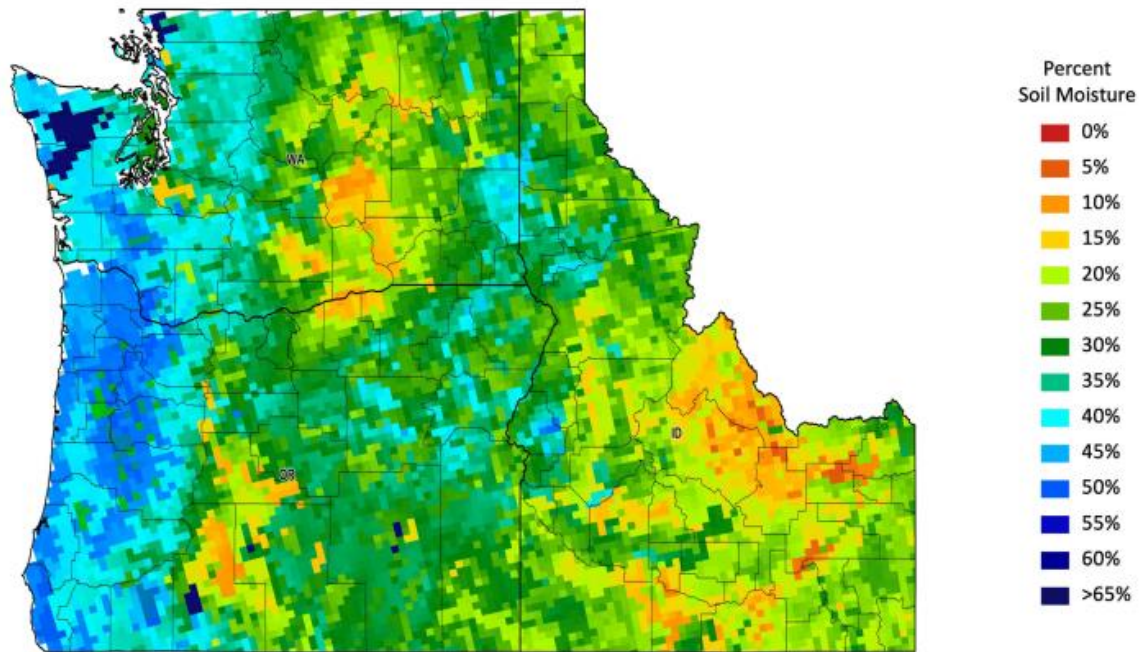
(NA) Not available.

Crop Progress — Washington: Week Ending 04/20/25

Crop and activity	Percent completed			
	This week	Last week	Last year	5 Year average
Spring wheat planted	57	28	57	61
Spring wheat emerged.....	12	3	17	23
Barley planted.....	51	21	49	52
Barley emerged	8	1	4	16
Spring canola planted	41	15	(NA)	(NA)
Spring canola emerged.....	3	(NA)	(NA)	(NA)
Potatoes planted.....	50	26	62	45
Potatoes emerged	5	(NA)	(NA)	(NA)
Onions planted	56	26	68	51
Onions emerged	5	(NA)	(NA)	(NA)
Field corn planted	10	1	13	10
Dry edible beans planted	15	1	29	(NA)
Dry edible peas planted	25	13	21	32
Dry edible peas emerged.....	1	(NA)	(NA)	(NA)

(NA) Not available.

Northwest Subsoil Moisture Map for Week Ending April 13, 2025



The Soil Moisture Active Passive (SMAP) provides measurements of soil moisture in the root zone as a weekly average, represented by pixels. Each pixel represents 9 by 9 kilometer plot or about 20,000 acres. The SMAP data measures soil moisture in cubic centimeters of water/cubic centimeters of soil. The scale represents the percent of water in a given volume of soil. More information and additional mapping is available on Crop-CASMA at <https://nassgeo.csiss.gmu.edu/Crop-CASMA/>



Access to NASS Reports

For your convenience, you may access NASS reports and products the following ways:

- All reports are available electronically, at no cost, on the NASS website <http://www.nass.usda.gov>
- Both national and state specific reports are available via a free e-mail subscription. To set-up this free subscription, visit <http://www.nass.usda.gov>. Hover over the "Publications" drop down. Under "Receive reports by Email" section in the lower right corner, select the report(s) you would like to receive.

For more information on NASS surveys and reports, call the NASS Agricultural Statistics Hotline at (800) 727-9540, 7:30 a.m. to 4:00 p.m. ET, or e-mail: nass@usda.gov