



# Crop Progress and Condition

## NATIONAL AGRICULTURAL STATISTICS SERVICE

United States Department of Agriculture • Washington, DC 20250

Northwest Regional Field Office • Olympia, WA 98507

Ag Statistics Hotline: 1-800-727-9540 • [www.nass.usda.gov](http://www.nass.usda.gov)



Released: April 14, 2025  
Week Ending: April 13, 2025

### In Cooperation with...

- University of Idaho Extension
- Idaho State Department of Agriculture
- Oregon State University Extension Service
- Oregon Department of Agriculture
- Washington State University Extension
- Washington State Department of Agriculture
- USDA, Farm Service Agency
- USDA, Natural Resources Conservation Service

### Regional Contacts

Phone: 1-800-435-5883

Email: [nassrfonwr@usda.gov](mailto:nassrfonwr@usda.gov)

- Washington – Dennis Koong, Regional Director
- Idaho – Ben Johnson, State Statistician
- Oregon – Dennis Koong, Regional Director
- Alaska – Andrew Brosier, State Statistician

This report contains the results from the **Crop Progress and Condition** weekly survey. The data collected each week is from respondents across the region whose occupations provide them opportunities to discuss agricultural production with farmers in their counties as well as to make visual observations. We thank all who have contributed to this report.

The USDA NASS National Crop Progress release is a more detailed report including crop progress and condition at the National level. You can locate that release [here](#).

### Week Ending: April 13, 2025

According to the National Agricultural Statistics Service, in Idaho there were 5.4 days suitable for fieldwork during the week. The southern parts of the State were warm and dry, while the northern part of the State experienced some freezing nights. In Oregon, there were 6.0 days suitable for fieldwork, with temperatures above normal in southeast parts of the State. In Washington, there were 5.6 days suitable for fieldwork, with temperatures warming up across most of the State.

### Soil Moisture Condition — Idaho, Oregon, and Washington: Week Ending 04/13/25

Item and State	Very short	Short	Adequate	Surplus
	(percent)	(percent)	(percent)	(percent)
Topsoil moisture				
Idaho .....	-	11	81	8
Oregon .....	2	7	73	18
Washington.....	8	15	70	7
Subsoil moisture				
Idaho .....	-	12	84	4
Oregon .....	3	6	73	18
Washington.....	9	13	73	5

- Represents zero.

## Pasture, Range, and Crop Condition — Idaho, Oregon, and Washington: Week Ending 04/13/25

Crop and State	Very poor	Poor	Fair	Good	Excellent
	(percent)	(percent)	(percent)	(percent)	(percent)
Pasture and range					
Idaho.....	4	15	34	35	12
Oregon.....	9	14	34	33	10
Washington.....	2	6	30	61	1
Winter wheat					
Idaho.....	-	2	30	66	2
Oregon.....	4	10	37	38	11
Washington.....	3	8	20	61	8
Winter canola					
Idaho.....	-	3	27	70	-
Washington.....	-	15	70	15	-

- Represents zero.

## Crop Progress — Idaho: Week Ending 04/13/25

Crop and activity	Percent completed			
	This week	Last week	Last year	5 Year average
Spring wheat planted .....	38	21	37	31
Spring wheat emerged .....	5	2	4	1
Barley planted.....	34	18	34	27
Barley emerged .....	4	2	3	1
Oats planted .....	15	9	18	20
Oats emerged .....	1	-	(NA)	(NA)
Spring canola planted .....	18	14	(NA)	(NA)
Potatoes planted .....	16	5	9	13
Onion planted .....	55	36	66	66
Onions emerged .....	13	2	16	(NA)
Sugarbeets planted .....	59	12	15	36
Dry edible beans planted .....	1	-	(NA)	(NA)
Dry edible peas planted .....	17	13	25	27

- Represents zero.

(NA) Not available.

## Crop Progress — Oregon: Week Ending 04/13/25

Crop and activity	Percent completed			
	This week	Last week	Last year	5 Year average
Spring wheat planted .....	70	59	67	67
Spring wheat emerged .....	24	3	18	20
Barley planted.....	67	50	61	47
Barley emerged .....	15	3	11	(NA)
Oats planted .....	35	22	48	41
Oats emerged .....	2	(NA)	7	(NA)
Potatoes planted .....	51	24	48	41
Potatoes emerged.....	4	(NA)	5	(NA)
Onions planted.....	53	36	69	62
Onions emerged .....	15	3	23	(NA)
Sugarbeets planted .....	45	20	88	70
Sugarbeets emerged .....	-	(NA)	17	(NA)
Field corn planted .....	5	1	3	7
Dry edible peas planted .....	65	54	63	59
Dry edible peas emerged .....	10	(NA)	7	(NA)

- Represents zero.

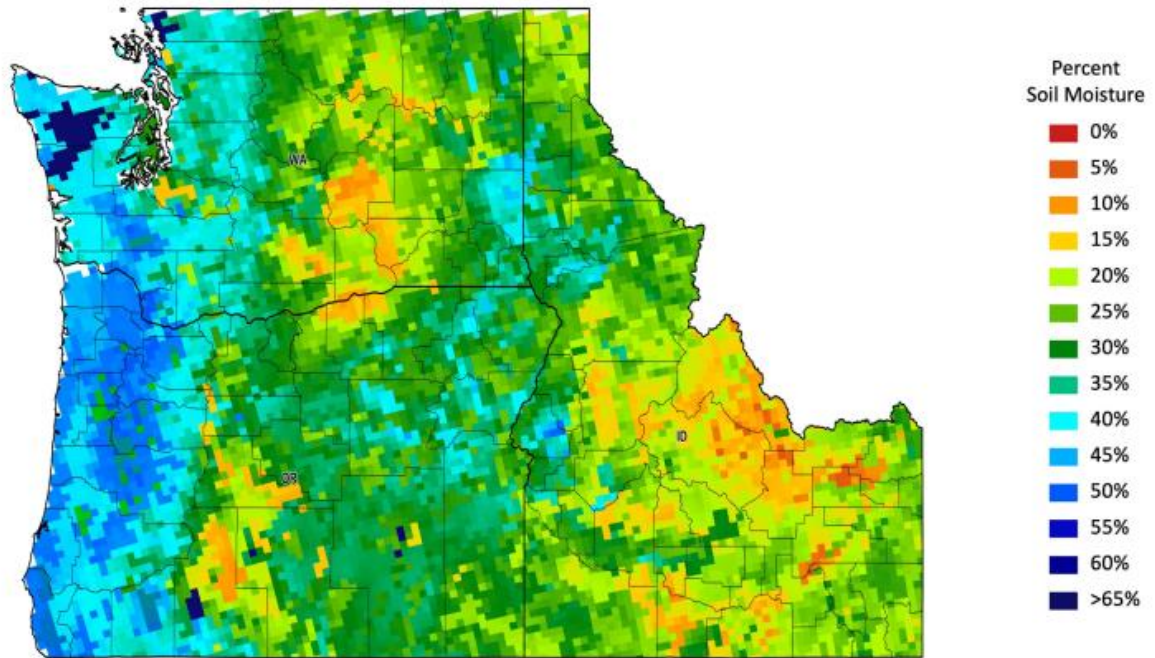
(NA) Not available.

## Crop Progress — Washington: Week Ending 04/13/25

Crop and activity	Percent completed			
	This week	Last week	Last year	5 Year average
Spring wheat planted .....	28	12	39	42
Spring wheat emerged.....	3	1	8	10
Barley planted.....	21	11	25	33
Barley emerged .....	1	(NA)	1	6
Spring canola planted .....	15	5	(NA)	(NA)
Potatoes planted.....	26	13	37	29
Onions planted .....	26	13	42	28
Field corn planted .....	1	(NA)	4	(NA)
Dry edible beans planted .....	1	(NA)	(NA)	(NA)
Dry edible peas planted .....	13	8	11	19

(NA) Not available.

### Northwest Subsoil Moisture Map for the Week Ending April 6, 2025



The Soil Moisture Active Passive (SMAP) provides measurements of soil moisture in the root zone as a weekly average, represented by pixels. Each pixel represents 9 by 9 kilometer plot or about 20,000 acres. The SMAP data measures soil moisture in cubic centimeters of water/cubic centimeters of soil. The scale represents the percent of water in a given volume of soil. More information and additional mapping is available on Crop-CASMA at <https://nassgeo.csiss.gmu.edu/Crop-CASMA/>



### Access to NASS Reports

For your convenience, you may access NASS reports and products the following ways:

- All reports are available electronically, at no cost, on the NASS website <http://www.nass.usda.gov>
- Both national and state specific reports are available via a free e-mail subscription. To set-up this free subscription, visit <http://www.nass.usda.gov>. Hover over the "Publications" drop down. Under "Receive reports by Email" section in the lower right corner, select the report(s) you would like to receive.

For more information on NASS surveys and reports, call the NASS Agricultural Statistics Hotline at (800) 727-9540, 7:30 a.m. to 4:00 p.m. ET, or e-mail: [nass@usda.gov](mailto:nass@usda.gov)