



Crop Progress and Condition

USDA, NASS, Virginia Field Office
Herman Ellison, State Statistician
601 W Broadway, Rm 645
Louisville, KY 40202
(502) 907-3250
Homepage: <http://www.nass.usda.gov/va>

In Cooperation with:
U.S. Dept. of Commerce - NOAA
Virginia Tech
Virginia State University
Virginia Cooperative Extension Service
Virginia Department of Agriculture and Consumer Services

Released: July 15, 2024

Issue: 19-24

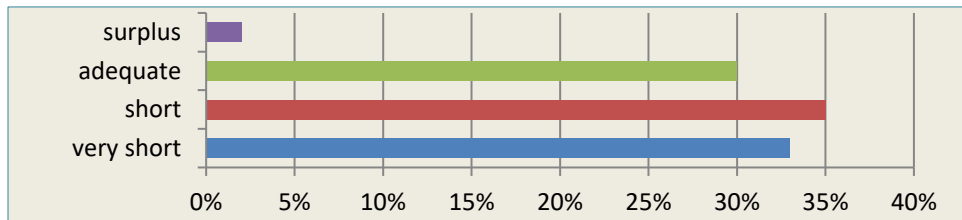
Agricultural News: Days suitable for fieldwork were 6.1. Weather conditions were hot and dry with scattered showers. Norfolk received over five inches of precipitation. Average high temperatures were mostly in the 90s. High temperatures and dry conditions continue to impact crops and animals with drought stress. Farmers are feeding hay and hauling water. There are abnormally dry to severe drought conditions in the State. Farming activities for the week included harvesting apples and praying for rain.

SOIL MOISTURE for week ending 7/14/24

	Very Short	Short	Adequate	Surplus
	%	%	%	%
Topsoil	33	35	30	2
Subsoil	26	45	28	1

- Represents zero.

TOPSOIL MOISTURE for week ending 7/14/24



CROP CONDITIONS for week ending 7/14/24

Crop	Very Poor	Poor	Fair	Good	Excellent
	%	%	%	%	%
Corn	14	40	31	14	1
Cotton	-	12	30	57	1
Hay, Alfalfa	12	25	41	20	2
Hay, Other	25	40	27	8	-
Pasture	27	36	29	8	-
Peanuts	-	1	20	66	13
Soybeans	2	13	37	48	-

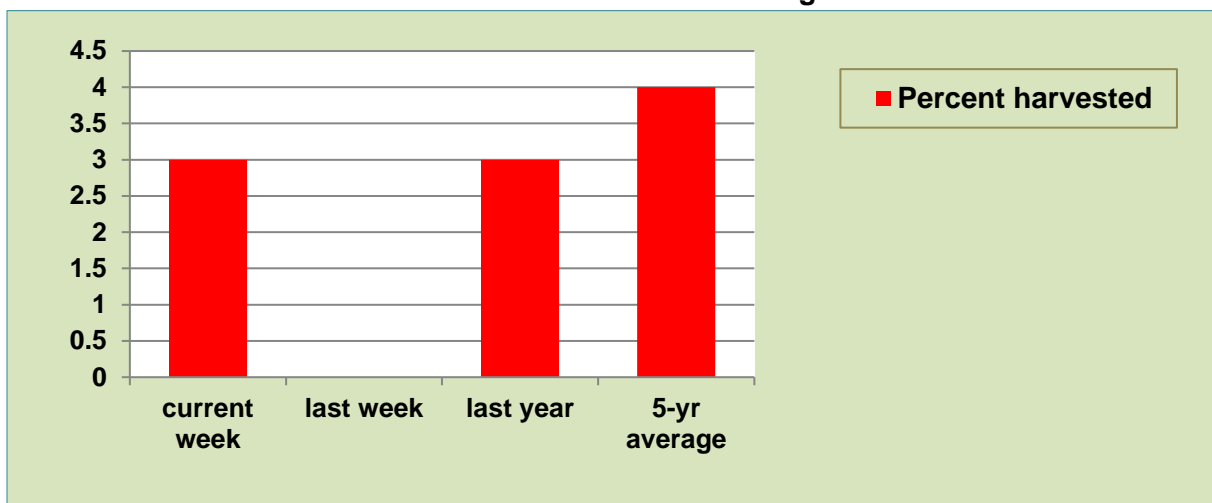
- Represents zero.

CROP PROGRESS for week ending 7/14/24

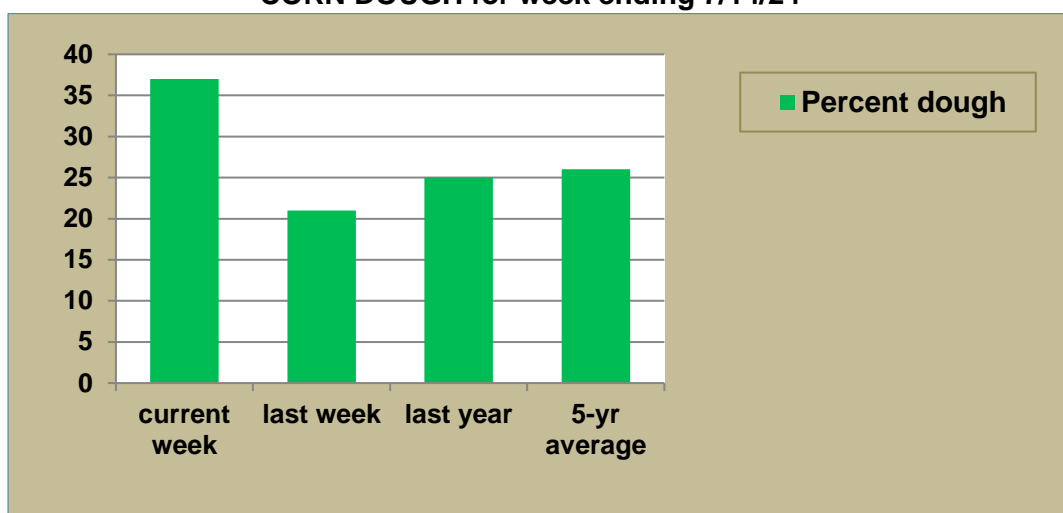
Crop Stage	This Week	Last Week	Last Year	5-Yr Avg
	%	%	%	%
Apples harvested	3	-	3	4
Barley harvested for grain	95	91	-	-
Corn silking	64	52	65	66
Corn dough	37	21	25	26
Corn dented	7	-	6	-
Cotton squaring	78	65	70	70
Cotton setting bolls	30	15	17	20
Peanuts pegging	70	53	56	59
Soybeans blooming	35	20	28	30
Soybeans setting pods	14	6	13	8
Winter Wheat harvested for grain	98	92	93	-

- Represents zero or data not available.

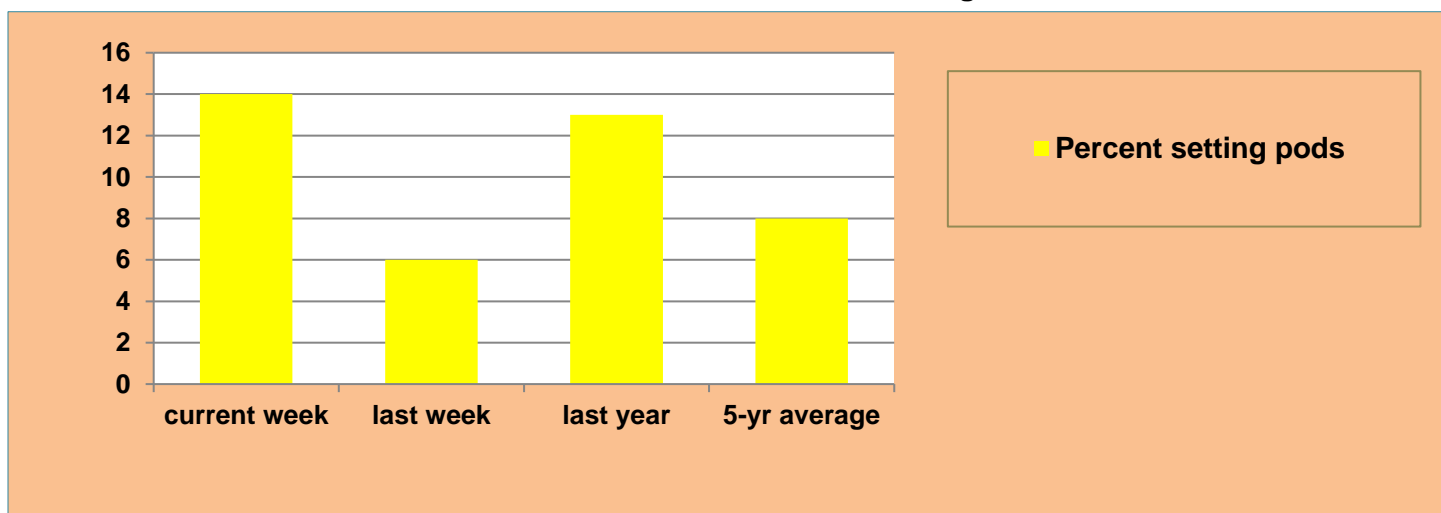
APPLES HARVESTED for week ending 7/14/24



CORN DOUGH for week ending 7/14/24



SOYBEANS SETTING PODS for week ending 7/14/24



Weather Summary- For the week ending July 14, 2024

City	Temperature				Precipitation				
	Avg. high	Avg. low	Avg. mean	Avg. dep. from normal *	Last Week	Since June 1	June 1 dep. from normal *	Jan. 1, 2024 to date	Jan. 1, 2024 dep. from normal *
Lynchburg	92.1	69.6	80.9	+4.8	0.99	1.53	-4.1	19.54	-3.6
Norfolk	89.6	75.6	82.6	+1.3	5.10	9.95	+3.2	33.18	+9.3
Richmond	91.1	75.1	83.1	+3.6	3.88	6.23	-0.4	30.93	+7.3
Roanoke	94.4	73.0	83.7	+5.9	0.00	4.27	-2.3	19.46	-4.5
Wash/Dulles	92.9	72.4	82.6	+5.3	1.06	2.43	-3.8	19.73	-3.7

*Normals value based on 1991-2020 normals data. Source: NOAA Southeast Regional Climate Center <https://www.sercc.com/>.