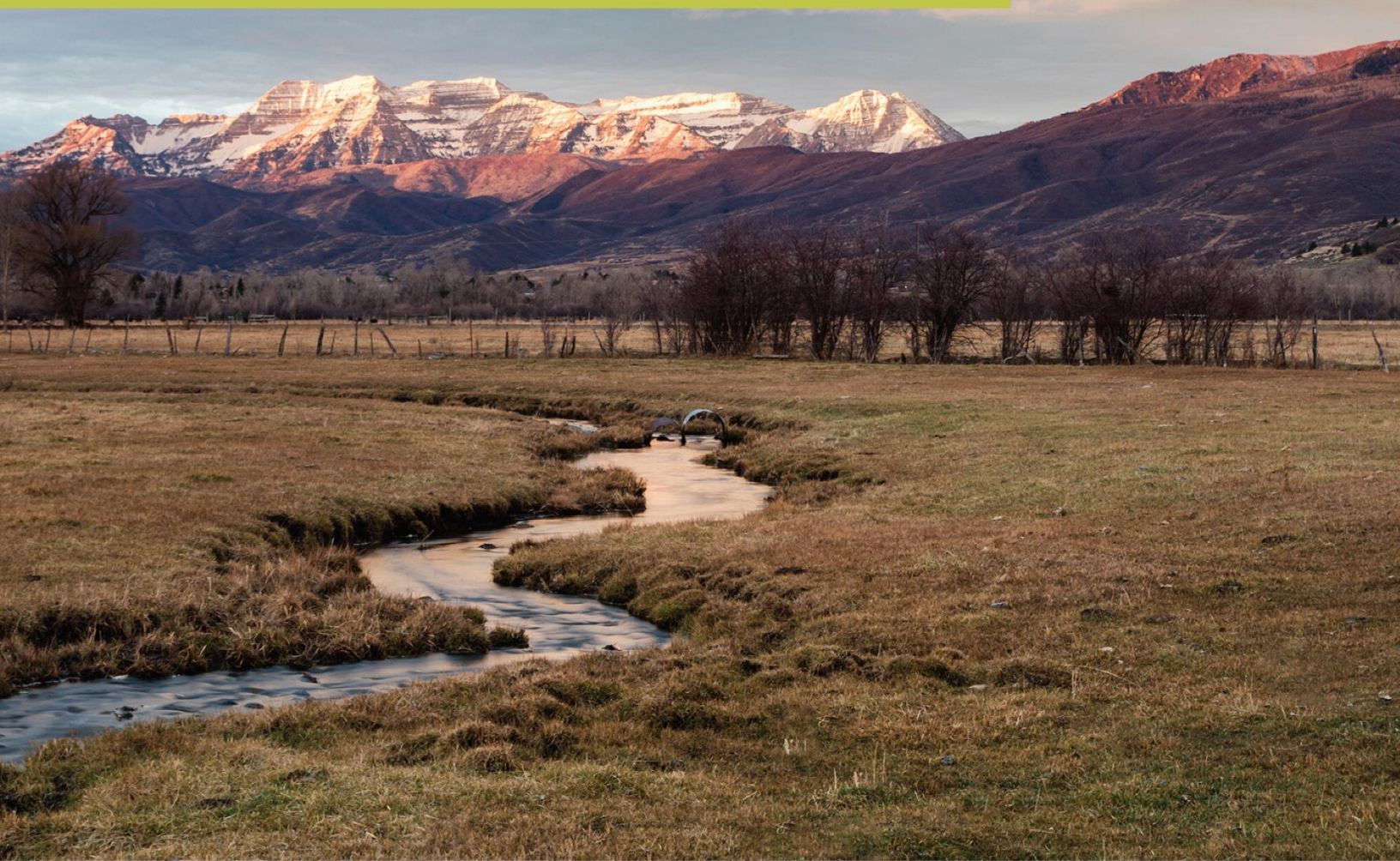


2020 ANNUAL REPORT



UTAH AGRICULTURAL STATISTICS AND ANNUAL SUMMARY REPORT

Utah Department of Agriculture and Food

**UTAH AGRICULTURAL STATISTICS
AND
UTAH DEPARTMENT OF AGRICULTURE AND FOOD
2020 ANNUAL REPORT**

Compiled by the
**United States Department of Agriculture
National Agricultural Statistics Service
Mountain Region, Utah Field Office**

John Hilton, State Statistician
Joel Gentillon, Survey Coordinator

350 S Main St, Suite 100
Salt Lake City, Utah 84101

801-524-5003

Fax: 866-314-4029

[http://www.nass.usda.gov/Statistics by State/Utah/](http://www.nass.usda.gov/Statistics_by_State/Utah/)

E-mail: nass-ut@nass.usda.gov

Issued cooperatively by
Utah Department of Agriculture and Food

R. Logan Wilde, Commissioner
Caroline Hargraves, Communications Specialist

350 N Redwood Road
P.O. Box 146500
Salt Lake City, Utah 84114-6500

801-982-2200

Fax: 385-465-6022

Web Page: <http://ag.utah.gov>

E-mail: agriculture@utah.gov



Photos – Provided by UDAF employees,
Utah's Own, and free and purchased stock photography



Hubert Hamer, Administrator
Troy Joshua, Director, Western Field Operations
William Meyer, Regional Director, Mountain Region



STATE OF UTAH

GARY R. HERBERT
GOVERNOR

OFFICE OF THE GOVERNOR
SALT LAKE CITY, UTAH
84114-2220

SPENCER J. COX
LIEUTENANT GOVERNOR

October 2020

Dear Reader,

As Governor of the great state of Utah, it is my pleasure to present the 2020 Annual Report for the Utah Department of Agriculture and Food. The Utah Department of Agriculture and Food is one of our oldest state agencies; throughout its nearly 100 years in operation, this agency has worked diligently with our farmers and ranchers to support their important work.

On behalf of the residents of Utah, I extend our appreciation to the employees of the Utah Department of Agriculture and Food for their continued dedication and diligent work. They work hard to promote healthy growth of Utah agriculture, conservation of our lands and natural resources, and the protection of Utah's food supply. The support of a healthy and secure supply of locally-grown foods benefits not only our agriculture and food industries, but also creates jobs, increases tax revenue and economic prosperity throughout the state.

The Utah Department of Agriculture and Food Division of Plant Industry have received the *Governor's Award of Excellence* in recognition of the Animal Feed Program and its innovation and efficiency.

As in years past, I believe the best is yet to come for our state and for the thousands of family-run farms in Utah. Thank you for your support of the healthy growth of Utah agriculture.

Sincerely,

Gary R. Herbert
Governor

Introduction

The Utah Field Office of the Mountain Region of USDA's National Agricultural Statistics Service (NASS) and the Utah Department of Agriculture and Food (UDAF) are proud to present the 48th edition of this publication. Copies of the publication are also available on both organizations' Internet sites. This publication is provided to help inform farmers, ranchers, and the public about activities within UDAF and provide a detailed look at Utah's agricultural production. Also included are budgets for helping farmers and ranchers evaluate the potential profitability of various agricultural commodities.

Cooperation from farmers, ranchers, and agribusinesses responding to various survey questionnaires is essential for quality estimates; their cooperation make this publication possible. We thank them for their help and willingness to provide the data needed to produce these statistics.

This report would not be possible without the dedicated effort of our field and telephone enumerators who collect this data. We thank them for their diligence and professionalism.

Estimates presented are current for 2019 production and January 1, 2020 inventories. Data users that need 2020 production information, or additional historic data, should contact the Utah Field Office at 801-524-5003 or toll free at 1-800-747-8522.

State and U.S. statistics are available on the NASS Web page at <http://www.nass.usda.gov/>. Use the "Quick Stats" utility to search for current or historic data by clicking the Data and Statistics tab.

Prior year estimates are subject to revision and may have been revised in this publication. Data users should use this publication for previous years' data and not go back to earlier publications for those data.

The following agricultural Web pages may interest you.

Organization	Web Page Address
U. S. Department of Agriculture (Includes links to all USDA Agencies)	http://www.usda.gov/
USDA – NASS	http://www.nass.usda.gov/
USDA - NASS Census of Agriculture	http://www.nass.usda.gov/AgCensus
USDA - Utah Agricultural Statistics	http://www.nass.usda.gov/ut/
Utah Department of Agriculture and Food	http://ag.utah.gov/
National Association of State Departments of Agriculture (NASDA)	http://www.nasda.org/
Food and Agricultural Policy Research Institute	http://www.fapri.missouri.edu/
CME Group	http://www.cmegroup.com/
Salt Lake City National Weather Service	http://www.weather.gov/slc
Western Regional Climate Center	http://www.wrcc.dri.edu/
Utah Climate Center	http://climate.usu.edu/
USU Extension Service	http://extension.usu.edu/
Utah Agriculture in the Classroom	http://utah.agclassroom.org/
Utah Farmers Union	http://www.utahfarmersunion.com/
Utah Farm Bureau	http://www.utahfarmbureau.org/
Utah Cattlemen's Association	http://www.utahcattlemen.org/
Utah Wool Growers Association	http://www.utahwoolgrowers.com/
Dairy West	http://www.dairywest.com

Information presented in this publication may be reproduced with the proper credit and no written approval is necessary.

Sincerely,



John Hilton, State Statistician
Mountain Region, Utah Agricultural Statistics

Table of Contents

Introduction.....	1
Table of Contents.....	2-3
Utah Department of Agriculture and Food 2020 Annual Summary Report.....	4
Message from the Commissioner.....	5
About the Utah Department of Agriculture and Food.....	6
UDAF Divisions.....	7
Utah Department of Agriculture and Food Contacts.....	8
Office of the Commissioner.....	9
Industrial Hemp and Medical Cannabis Program.....	10
Animal Industry Division.....	11-14
Conservation Division.....	15-17
Laboratory Services Division.....	18-19
Marketing and Economic Division.....	20-23
Plant Industry Division.....	24-29
Regulatory Services Division.....	30-37
Utah Rankings & Records	
Rank & Quantity Produced, Selected Commodities – Utah, Leading State, & United States: 2019.....	39
Record Highs & Lows: Acreage, Yield, & Production of Crops – Utah.....	40
Record Highs & Lows: Livestock, Poultry, Honey, & Mink – Utah.....	41
Census of Agriculture	
Census of Agriculture: Producer & Farm Characteristics of Veterans, Young Producers, & New & Beginning Producers – Utah: 2017.....	42
Census of Agriculture: Producer Demographics – Utah: 2017.....	43
Farmland Data	
Number of Farms, Land in Farms, & Average Farm Size – Utah & United States: 2010-2019.....	44
Number of Farms by Economic Sales Class – Utah: 2010-2019.....	44
Farms: Acres by Economic Sales Class – Utah: 2010-2019.....	44
Farm Income: Cash Receipts by Commodity – Utah: 2014-2019.....	45
Farm Income Indicators – Utah: 2014-2019.....	46
Agricultural Exports: Estimated Value by Commodity Group – Utah: 2013-2018.....	47
Crop Data	
Annual Crop Summary.....	48
Usual Planting & Harvesting Dates.....	48
Barley: Area Planted & Harvested, Yield, Production, Price, & Value – Utah: 2010-2019.....	49
Corn for Grain: Area Planted & Harvested, Yield, Production, Price, & Value – Utah: 2010-2019.....	49
Corn for Silage: Area Harvested, Yield, & Production – Utah: 2010-2019.....	49
Alfalfa Hay: Area Harvested, Yield, Production, Price, & Value – Utah: 2010-2019.....	50
Other Hay: Area Harvested, Yield, Production, Price, & Value – Utah: 2010-2019.....	50
All Hay: Area Harvested, Yield, Production, Price, & Value – Utah: 2010-2019.....	50
Hay Stocks: Position & Month – Utah: 2010-2019.....	51
Safflower: Area Planted & Harvested, Yield, Production, Price, & Value – Utah: 2010-2019.....	51
Winter Wheat: Area Planted & Harvested, Yield, Production, Price, & Value – Utah: 2010-2019.....	52
Other Spring Wheat: Area Planted & Harvested, Yield, Production, Price, & Value – Utah: 2010-2019.....	52
All Wheat: Area Planted & Harvested, Yield, Production, Price, & Value – Utah: 2010-2019.....	52
Barley Stocks: Located Off Farm by Quarter – Utah: 2011-2020.....	53
Corn Stocks: Located Off Farm by Quarter – Utah: 2011-2020.....	53
Oat Stocks: Located Off Farm by Quarter – Utah: 2011-2020.....	53
Wheat Stocks: Located Off Farm by Quarter – Utah: 2011-2020.....	53
Fruit & Vegetable Data	
Tart Cherries: Acreage, Yield, Production, Price, & Value – Utah: 2010-2019.....	54

Table of Contents (Continued)

Livestock Data

Operations: All Cattle & Calves – Utah: 2007, 2012, & 2017.....	55
Operations with Beef Cows – Utah: 2007, 2012, & 2017.....	55
Operations with Milk Cows – Utah: 2007, 2012, & 2017.....	55
Operations with Sheep & Lambs – Utah: 2007, 2012, & 2017.....	55
Operations with Hogs & Pigs – Utah: 2007, 2012, & 2017.....	55
Cattle & Calves: Number by Class & Calf Crop – Utah: January 1, 2016-2020.....	56
Cattle & Calves: Balance Sheet – Utah: 2015-2019.....	56
Cattle & Calves: Production, Marketings, & Income – Utah: 2015-2019.....	56
Dairy: Milk Production & Milkfat – Utah: 2015-2019.....	57
Milk & Cream: Marketings, Used on Farm, Income, & Value – Utah: 2015-2019.....	57
Manufactured Dairy Products – Utah: 2015-2019.....	57
Milk Cows: Production by Month – Utah: 2017-2019.....	58
Commercial Cattle Slaughter – Utah: Monthly 2018 & 2019.....	58
Hogs & Pigs: Total Breeding & Market Inventory, Farrowings, Pigs per Litter, Pig Crop, & Marketings – Utah: December 1, 2010-2019.....	59
Hogs & Pigs: Balance Sheet – Utah: 2015-2019.....	59
Market Hogs & Pigs: Inventory by Weight Group – Utah: December 1, 2010-2019.....	59
Hogs & Pigs: Production, Marketings, & Income – Utah: 2010-2019.....	60
Commercial Hog Slaughter – Utah: Monthly 2018 & 2019.....	60
Sheep & Lambs: Inventory by Class & Lamb Crop – Utah: January 1, 2016-2020.....	61
Wool: Production & Value – Utah: 2015-2019.....	61
Sheep & Lamb: Lamb Crop, Farm Slaughter, & Death Loss – Utah: 2011-2020.....	61
Sheep & Lamb Losses – Utah: 2014-2019.....	62-65
Layers & Eggs – Utah: 2015-2019.....	66
Turkey: Production & Value – Utah: 2010-2019.....	66
Mink: Pelts Produced, Females Bred, Average Price, & Value – Utah & United States: 2010-2019.....	67
Pelts Produced in 2019 & Females Bred for 2020, by Type – Utah & United States:.....	67
Honey: Number of Colonies, Yield, Production, Stocks, Price, & Value – Utah: 2010-2019.....	68
Trout: Total Value of Fish Sold & Foodsize Sales – Utah: 2010-2019.....	68

Prices Received

Marketing Year Average Prices, by Commodity – Utah: 2011-2019.....	69
Prices Received: Monthly Averages by Selected Commodities – Utah: 2010-2019.....	69-70
Farm Labor: Number Hired, Wage Rates, & Hours Worked – Mountain II Region: July 2019, October 2019, January 2020, & April 2020.....	71
Grazing Fees: Annual Average Rates – Utah: 2010-2019.....	71

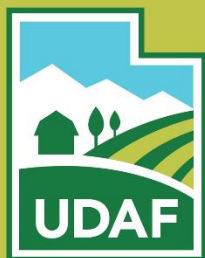
County Estimates

County Estimates: Select Items & Years – Utah.....	72-73
County Estimates: Cattle – Utah: January 1, 2019 & 2020.....	74
County Estimates: Cash Rent per Acre – Utah: 2019 & 2020.....	75

Enterprise Budgets

Snapdragon Cut Flower Budget for One Field.....	76-77
Snapdragon Cut Flower Budget for One High Tunnel.....	78-79

Utah Counties and Districts Map.....	80
--------------------------------------	----



Utah Department
of Agriculture and Food

2020 Annual Report

MESSAGE FROM THE COMMISSIONER

As the year's events have unfolded, the importance of a safe and secure food supply has become all the more evident, Utah's rich agricultural industry and heritage has been at the forefront of our minds and while the preceding months have been tumultuous at times, farmers and ranchers are no strangers to adversity. The need to support Utah's many farms and ranches, conserve our lands and natural resources, and educate the public on the value of agriculture is an ongoing responsibility and a privilege UDAF is proud to uphold.

While the services and programs UDAF provides are many, there are a couple of programs in particular whose progress I'd like to highlight. One area of note is UDAF's Grazing Improvement Program, which exists to enhance range conditions and improve the economic and environmental wellbeing of rural Utah. Considering Utah's changing demographics and the decline in public land grazing opportunities, the need for state-level representation for the livestock industry is a high priority. Our seven GIP coordinators are hard at work connecting with producers to extend watering reach and increase grazing opportunities. This year, a \$3 million grant was approved by the legislature for our Water Optimization Program. Through this program we're coordinating with producers throughout the state to show how monitoring and better-use agricultural practices can improve and reduce water use.

Thank you for your interest in and support of Utah agriculture. I invite you to review our annual report and learn about this diverse agency and the importance of Utah agriculture in this great state.

**UTAH DEPARTMENT OF
AGRICULTURE AND FOOD
COMMISSIONER
LOGAN WILDE**



ABOUT THE UTAH DEPARTMENT OF AGRICULTURE AND FOOD

With roots dating to 1921, the Utah Department of Agriculture and Food (UDAF) is one of the state's oldest agencies. UDAF oversees dozens of legislatively mandated programs that promote the healthy growth of Utah agriculture, the conservation of our natural resources, and the protection of our food supply.

UDAF is responsible for many important programs and services that aim to strengthen the economic wellbeing of our agriculture and food producers, improve the health of our rangelands and watersheds and provide protection to consumers.

The oversight of food safety, public health and consumer protection are critical and essential functions of state government. With responsibilities encompassing animal health, food and animal feed safety, the assurance of consumer protection through monitoring for reliable weights and measures and label compliance, invasive species mitigation efforts, laboratory analysis, conservation efforts, and the promotion of local goods via Utah's Own branding on market shelves — there's hardly an aspect of our lives that isn't touched by the work of the Utah Department of Agriculture and Food.

OUR MISSION:

Promote the healthy growth of Utah agriculture, conserve our natural resources, and protect our food supply

OUR VALUES:

Integrity and respect; stewardship and accountability; growth and achievement; people and partnerships; heritage and culture

OUR PRIORITIES:

Improve communication and awareness of agriculture, conserve and enhance Utah's lands and natural resources; ensure food safety and consumer protection; build partnerships, advocates, and develop agricultural leaders

UDAF DIVISIONS

The Utah department of Agriculture and Food is responsible for the administration of Utah's agricultural laws, which mandate a wide variety of activities including inspection, regulation, information, rulemaking, loan issuance, marketing and economic development, pest and disease control, improving the economic position of agriculture, and consumer protection.

▶ OFFICE OF THE COMMISSIONER

Helps the department fulfill its mission to protect and promote agriculture by raising public awareness and demand for Utah agriculture and food products.

▶ ADMINISTRATIVE SERVICES DIVISION

Provides support to all divisions within the department to ensure state policies are implemented to meet audits conducted by the State Finance and State Auditor's Office.

▶ ANIMAL DIVISION

Responsible for the prevention and control of animal disease through six main programs.

▶ CONSERVATION DIVISION

Preserves and protects Utah's soil and water resources and ensures the development and utilization of those resources for the betterment of Utah agriculture and its people.

▶ LABORATORY ANALYTICS DIVISION

Houses state laboratory chemists and microbiologists who verify food and product samplings as a service for other department divisions.

▶ MARKETING & ECONOMIC DEVELOPMENT DIVISION

Provides communications support to all divisions and houses programs and grants to improve consumer awareness of and the economic prosperity of agriculture in Utah.

▶ PLANT DIVISION

Ensures disease and pest-free plants, grains, and seeds as well as properly labeled agricultural commodities and the safe application of pesticides and farm chemicals.

▶ REGULATORY DIVISION

Provides food safety oversight and consumer protection of agricultural products and services.

UTAH DEPARTMENT OF AGRICULTURE AND FOOD

ADMINISTRATION

Logan Wilde	Commissioner
Kelly Pehrson	Deputy Commissioner

CONTACT

801.982.2303
385.538.7102

DIRECTORS

Debbie Lyberger	Administrative Services
Leann Hunting	Animal Industry
R.J. Spencer	Conservation
Cody James	Industrial Hemp Program
Brandon Forsyth, Ph.D.	Laboratory Services
Linda Gillmor	Marketing & Economic Development
Robert Hougaard	Plant Industry
Travis Waller	Regulatory Services

DIVISION CONTACT

801.982.2214
801.982.2240
801.541.2306
801.982.2375
801.816.3840
801.982.2200
801.982.2305
801.982.2250



OFFICE OF THE COMMISSIONER

The Office of the Commissioner is the executive office of the Utah Department of Agriculture and Food. It is responsible for a number of programs which assist the department fulfill its mission of protecting and promoting the healthy growth of Utah agriculture by raising public awareness and demand for Utah agricultural and food products.

Included within the Office of the Commissioner are the Administrative Services Division, the Utah Industrial Hemp and Medical Cannabis Programs, and the Agriculture Mediation Program.

ADMINISTRATIVE SERVICES DIVISION

UDAF's Division of Administrative Services provides support to all divisions within UDAF to ensure state policies and procedures are implemented to meet audits conducted throughout the year by State Finance and the State Auditor's Offices.

UTAH INDUSTRIAL HEMP AND MEDICAL CANNABIS PROGRAM

The Utah Industrial Hemp and Medical Cannabis Program is responsible for the licensing and registration of Utah's industrial hemp growers, processors, manufacturers and retailers as well as the growers and processors of medical cannabis. The medical cannabis portion of the program works in conjunction with the Utah Department of Health, which registers providers, licenses pharmacies and issues cards to patients.

AGRICULTURAL MEDIATION PROGRAM

The Utah Agricultural Mediation Program (UAMP) mediates agricultural disputes between farmers and ranchers and the United States Department of Agriculture (USDA) throughout the state of Utah. The program is administered through UDAF and has been certified by the USDA. UAMP is a voluntary mediation program created in keeping with the provision of the Agricultural Credit Act of 1987, Title 5 "State Mediation Programs."



INDUSTRIAL HEMP AND MEDICAL CANNABIS PROGRAM

2019-2020 PROGRAM UPDATES

During the first year of the Medical Cannabis Program, while working closely with the Utah Department of Health, 8 cannabis cultivators, 7 cannabis processors, and 1 lab were licensed to ensure Utah's 7,600+ medical cannabis patient cardholders have access to safe and high quality products.

-This involved the implementation of a state-wide Inventory Control System (ICS) through MJ Freeway to track cannabis product from a seedling to a finished product.

-The state also implemented an Electronic Verification System (EVS) to track patients and over 80 authorized employees who work in cannabis production facilities, referred to as "Agents."

On July 1, 2020 the Industrial Hemp Program launched a new initiative for Utah-based retailers to register as hemp retailers.

Industrial hemp waste is now allowed to enter the medical cannabis market and can be sold to medical cannabis cultivators and processors.

UDAF's Medical Cannabis Inspectors conduct regular inspections on all 16 Cannabis Production Facilities. This includes audits of production records, reviews of on-premises surveillance footage, and working closely with owners to ensure all rules and statutes are being enforced. To date, over 250 medical cannabis quality assurance samples were conducted this year.

AS OF AUGUST 1, 2020:

207

UDAF has licensed 207 hemp growers who have planted over 4 million plants this year.

1,200

1,200 hemp products have been registered for retail in Utah, with more products being registered every day.

78

UDAF has licensed 78 hemp processors who are working diligently to provide safe products for Utah's market.

283

283 hemp retailers registered within the first month of launching the new Industrial Hemp Retail Permit.

ANIMAL INDUSTRY DIVISION

The focus of the Animal Industry Division is the prevention and control of animal disease through outbreak prevention, monitoring, education and quarantine as necessary. The division also actively engages in livestock brand identification and theft prevention as well as oversees the Utah Horse Racing Commission.

MAJOR PROGRAMS

- ▶ ANIMAL HEALTH
- ▶ MEAT AND POULTRY INSPECTIONS
- ▶ LIVESTOCK INSPECTIONS
- ▶ FISH HEALTH
- ▶ ELK FARMING AND ELK HUNTING PARKS
- ▶ VETERINARY DIAGNOSTIC LABS



ANIMAL INDUSTRY DIVISION

DIVISION HIGHLIGHTS

ANIMAL HEALTH

- 6,881 livestock export movements out of Utah, which included over 2.8 million livestock: 2,804,330 Poultry, 21,606 Bovine, and 4,888 Porcine.
- Over 36,000 livestock were tested for diseases, such as Trichomoniasis, Brucellosis, Coggins, Vesicular Stomatitis and West Nile Virus among others.
 - 25,675 Trichomoniasis Tests were conducted.
 - 14 positive cases recorded
 - 5,297 Brucellosis Tests were conducted.
 - 100 positive tests recorded
- 10,740 livestock import movements into Utah, which included over 7 million livestock: 7,147,149 Poultry, 66,848 Bovine, 37,462 Porcine, and 13,587 Sheep.



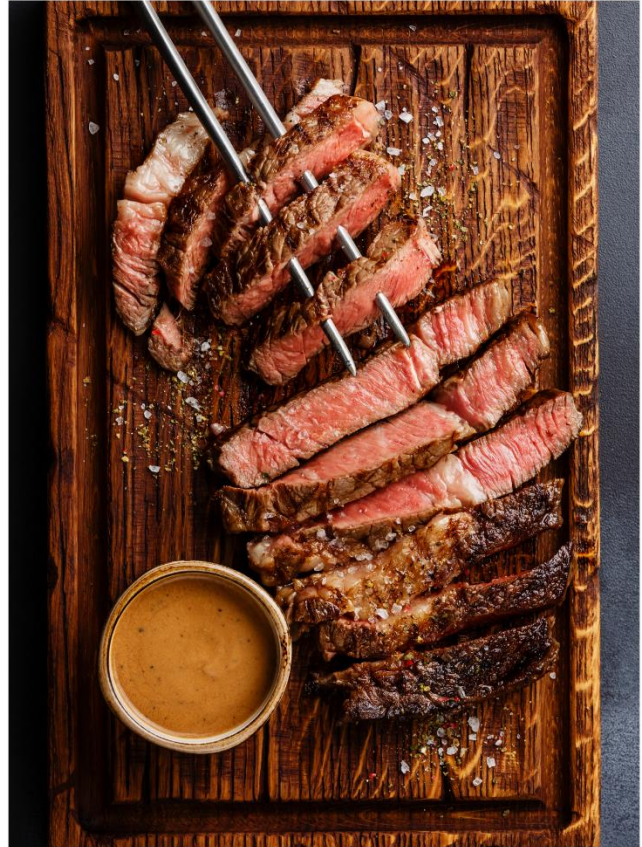
ANIMAL INDUSTRY DIVISION

LIVESTOCK INSPECTIONS

- 6,780,937 cattle, horse, and elk were inspected.
- 27,760 brand inspection certificates were issued.
- To date, there are 16,016 registered brands.
- Halfway through the 2020 brand renewal year 7,041 brands belonging to 12,056 (primary, secondary, and tertiary) owners have been renewed.

MEAT INSPECTION PROGRAM

- Includes 25 meat inspection staff members.
- 113 total facilities were inspected statewide.



ANIMAL INDUSTRY DIVISION

PREDATOR CONTROL PROGRAM

The Utah Wildlife Services Program (WS) is a cooperative effort between the UDAF and the U.S. Department of Agriculture. Funding comes from state and federal sources, as well as from ranchers who pay a per-head assessment. The focus of the program is to protect livestock; primarily adult sheep, lambs, and calves from predators including coyotes, cougars, bears and ravens.

Predator management is also needed to sustain and improve wildlife populations. The Utah Wildlife Services Program worked with the Utah Division of Wildlife Resources (UDWR) in 22 deer units, 11 sage grouse management areas, 9 bighorn sheep units, 5 pronghorn areas and 8 waterfowl management areas.

WS also plays a critical role in the early detection and management of invasive species, like feral swine. WS conducts aerial surveys in areas with reported and verified sightings of feral swine. WS works with the UDWR and US Fish and Wildlife Service (USFWS) to conduct a feral swine detection project where trained dogs were used to search for any sign or presence of feral swine on several UDWR wildlife management areas and USFWS wildlife refuges.

WS also provides technical assistance and training to the public about problems related to urban wildlife such as skunks, raccoons, birds and other animals. WS continues to conduct disease monitoring in the urban program and responds to human safety cases involving cougars or bears statewide when assistance is requested by the UDWR.

PREDATORS TAKEN STATEWIDE:

- Bears - 35
- Coyotes - 2,592
- Foxes - 128
- Cougars - 39
- Ravens - 2,970
- Turkey Vultures - 6



CONSERVATION DIVISION

The Conservation Division of UDAF exists to assist farmers and ranchers in caring for and protecting Utah's natural resources. This is achieved through conservation planning and assistance designed to benefit the soil, water, air, plants, and animals that result in productive lands and healthy ecosystems.

Major Programs and Grants Include:

- ▶ **Agricultural Resource Development (ARDL)**
 - ▶ **Grazing Improvement Program**
 - ▶ **Water Optimization Grant**
 - ▶ **Conservation Districts**
 - ▶ **Utah Conservation Commission**
-

CONSERVATION DISTRICTS

Utah is home to 38 conservation districts which enable producers to enhance and protect soil, water and air. Each conservation district has 5 supervisors, elected at large from within each district, making 190 supervisors in total that serve their respective areas throughout the state. Each conservation district is responsible for helping agriculture flourish while protecting the surrounding resources. Water projects made up the majority of funds spent during the past year.



CONSERVATION DIVISION

UTAH CONSERVATION COMMISSION

The Utah Conservation Commission (UCC) is a policy group made up of twelve commissioners appointed by the Governor's Office that serve to partner with Utah's conservation districts. The UCC approved \$1 million in ARDL funds to be used for conservation projects resulting in 12 projects completed to protect water and soil resources. New this year was the UCC approval of \$500,000 to be used for conservation districts to purchase necessary equipment such as spreaders, chains and mowers to assist in the work of conservation. Nearly all who applied were assisted with up to 75% off the purchase price of needed equipment.

GRAZING IMPROVEMENT PROGRAM (GIP)

The UDAF GIP program is designed to empower the existing grazing community with the intent of improving range conditions as a means to improve the environment and the economic wellbeing of rural Utah. Seven GIP coordinators work directly with producers to extend watering reach and increase productivity of available grazing lands. The livestock grazing industry contributes more than \$350 million to Utah's economic growth and generates numerous jobs in the agriculture industry.



CONSERVATION DIVISION

AGRICULTURAL RESOURCE DEVELOPMENT LOAN PROGRAM (ARDL)

ARDL has been in operation since 1976, working to help farmers and ranchers with their loan applications. This program is in conjunction with the Utah Conservation Commission and helps with projects that may include nutrient management, water usage, rangeland improvement, on-farm energy projects and disaster mitigation. ARDL interest rates are fixed and can be found online at ag.utah.gov. Terms and conditions apply.

WATER OPTIMIZATION GRANT

New this year was a \$3 million Water Optimization Fund approved by the legislature. This funding was designed to support individual farmer projects that demonstrate a need and ability to reduce consumptive water use while maintaining or even improving agriculture production and productivity. It was also designed to provide increased operational flexibility for agriculture water users moving forward.

UDAF-approved producer projects across the state are underway. These projects will report on water savings that can be demonstrated by best practices on irrigation pivots, wheel lines, and other irrigation management tools.





LABORATORY SERVICES DIVISION

The Laboratory Services Division operates as a service for the other divisions within UDAF. The division laboratories provide chemical, physical and microbiological analyses of agricultural and food products. Field inspectors from the divisions of Plant Industry and Conservation, Regulatory Services, and Animal Health collect most of the samples analyzed by the laboratories. Some samples may only be tested for specific ingredients, as stated by the associated label guarantee; others are also examined for undesirable materials and contaminants.

THE DIVISION LABORATORIES INCLUDE:

- ▶ **Analytical Chemistry Lab**
- ▶ **Dairy Testing Lab**
- ▶ **Feed and Fertilizer Lab**
- ▶ **Meat Lab**

SIGNIFICANT EVENTS

The UDAF laboratories are developing methods for detecting mitragynine and other related compounds as a part of the state effort to regulate kratom products. The Laboratory Services Division is developing a proficiency testing program to ensure that independent third-party laboratories desiring to participate in cannabis testing can accurately perform all of the needed methods. The division is also actively engaged in testing water samples for deadly cyanotoxins, which are generated during algal blooms in various large bodies of water around the state.

LABORATORY SERVICES DIVISION

ANALYTICAL CHEMISTRY LAB

The Analytical Chemistry Lab uses advanced instrumentation to quantify the amounts of various chemical compounds in specific agricultural products, such as CBD and THC in hemp. They also analyze samples for the presence of common adulterants such as pesticides, mycotoxins, residual solvents, and drugs. The Analytical Chemistry Lab is responsible for testing products registered with the Utah Medical Cannabis Program and the Industrial Hemp Program. These products are tested for their cannabinoid content and adulterants to ensure they comply with state regulations.

DAIRY TESTING LAB

The Dairy Testing Lab is responsible for testing Grade-A milk and dairy products, including pre-pasteurized milk and finished dairy products, such as ice cream, cottage cheese and coffee creamer. The laboratory also administers a laboratory certification program for the local dairy industry.

FEED AND FERTILIZER LAB

The Feed and Fertilizer Lab analyzes feed and fertilizer products to ensure label guarantees. This lab also tests for the presence of harmful adulterants, such as heavy metals or other toxins.

MEAT LAB

The Meat Lab analyzes samples obtained during inspections of plants and processing facilities in Utah. The lab tests for the protein and fat content of the meat samples. Samples are also tested for harmful pathogens to ensure that production plants are following proper hygienic practices.



MARKETING AND ECONOMIC DEVELOPMENT

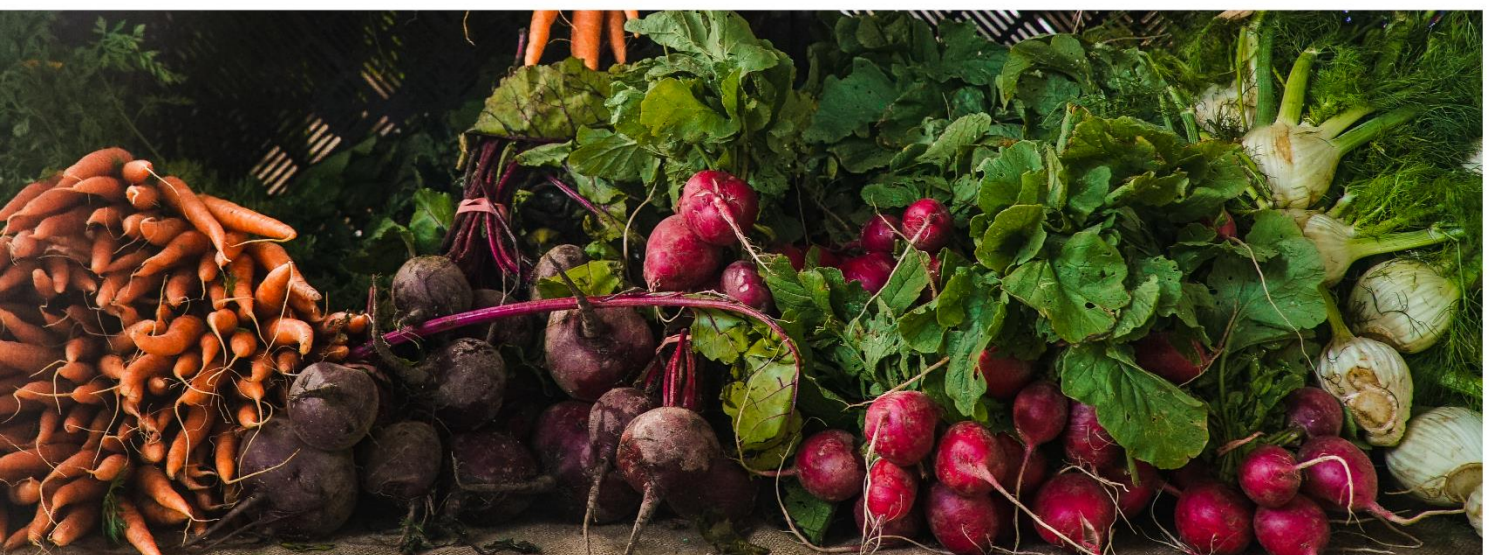
UDAF's Marketing and Economic Development (MED) Division works diligently to support the economic prosperity of Utah's food and agriculture producers, raise awareness and support of local agriculture and food products, while fostering vibrant, healthy rural economies.

The division also provides support to all UDAF divisions through interdepartmental and public communications via the UDAF and Utah's Own websites and social media accounts; content development for print, digital and video needs; and by fostering media relations to disseminate information on issues ranging from program updates to public and animal health emergencies.

The Marketing and Economic Development division is comprised of the International Trade Program, the Specialty Crop Block Grant Program, and the Utah's Own Program. In addition to these programs, the division provides staff support to Utah's Local Food Advisory Council, publishes agricultural market reports, and works closely with community stakeholders and industry leaders.

DIVISION PROGRAMS AND INITIATIVES

- ▶ **Economic Development Initiatives**
- ▶ **Specialty Crop Block Grant Program**
- ▶ **International Trade Program**
- ▶ **UDAF Communications**
- ▶ **Local Food Advisory Council**
- ▶ **Utah's Own Program**



MARKETING AND ECONOMIC DEVELOPMENT

ECONOMIC DEVELOPMENT INITIATIVES

The Marketing and Economic Development Division supports the entire spectrum of agricultural production, including agribusiness, farm-to-table, high-tech, urban farms and value-added food and agricultural products, as each responds to a unique market demand. This is accomplished through building collaborative relationships with partners in education, economic development, all levels of government, and especially with our agricultural and food industry partners.

MEAT INFRASTRUCTURE FEASIBILITY STUDY

Much of the beef, pork and lamb raised in Utah leaves the state before processing. Current demand for fresh, local meats has put extreme pressure on existing small to medium-sized meat processing plants; many of whom have expressed an interest in growing their business.

In an effort to determine how to best build up the essential meat processing infrastructure within Utah, the UDAF MED team along with Utah State University initiated a Meat Infrastructure Feasibility Study in May of 2020 with the following objectives:

- Understand the current meat processing capacity in Utah
- Research efforts in other states to address food supply issues
- Understand demand for locally produced beef in Utah
- Assess feasibility of increasing meat processing capacity in Utah
- Develop a report summarizing findings and recommendations

This Meat Infrastructure Feasibility Study will be completed by December 2020.

INTERNATIONAL TRADE PROGRAM

As global markets continue to expand, the importance of supporting the growth of Utah businesses beyond the borders of our state and country continue to be of paramount importance. UDAF's International Trade Program exists to connect Utah agricultural and food producers with a variety of local and global resources to facilitate expansion into international markets.

UDAF maintains an extensive network of partners and contacts in order to expand export resources and opportunities for Utah's many and diverse producers. As a member of the Western United States Agricultural Trade Association (WUSATA), UDAF is able to offer exclusive webinars and export trainings, fund matching opportunities, connections with international markets and buying missions, trade shows, and more.

MARKETING AND ECONOMIC DEVELOPMENT

LOCAL FOOD ADVISORY COUNCIL

The Local Food Advisory Council was created in 2017 with the purpose of promoting vibrant locally-owned farms, strong communities and healthy eating; enhancing local food economies; and improving local food access for all Utahns. The council holds four annual meetings to bring members of the local food community together to discuss challenges and identify possible solutions.

In 2020 five working groups were created: 1) Innovations in Production, 2) Innovations in Distribution, 3) Agricultural Land Preservation, 4) Regulations, and 5) Statewide Community Food Assessment.

MARKET REPORTS

Publishing market reports and commodity price information is critical for agriculture producers and agribusinesses. UDAF's Marketing and Economic Development team is proud to provide this important service and regularly shares statewide livestock auction reports as well as information about hay, dairy, and wheat prices.



MARKETING AND ECONOMIC DEVELOPMENT

SPECIALTY CROP BLOCK GRANT PROGRAM

The purpose of the Specialty Crop Block Grant Program (SCGBP) is to enhance the awareness and consumption of specialty crops, defined as 'fruits, vegetables, tree nuts, dried fruits, horticulture, and nursery crops (including floriculture).'

In 2019, the SCGBP provided \$284,323.03 in funding to 6 different projects to Utah State University and the private sector. The approved projects include a study of invasive species and projects to improve the growth and distribution of crops such as raspberries and butternut squash through tunnels, heating and groundwater quality monitoring. \$360,000 is planned to be distributed in the next year providing funding to at least 7 projects.

UTAH'S OWN PROGRAM

The Utah's Own marketing program connects consumers to local agriculture and food producers.

Utah's Own provides credible branding and marketing support to local agriculture and food businesses for a nominal annual fee. These resources include producer profiles and directory placement at UtahsOwn.org, twice-annual product photography, updates on available grants and beneficial business resources and social media marketing to our approximately 40,000 followers.

In the spring of 2020, Utah's Own launched the 'Bringing Confidence to Your Table' campaign with the goals of alleviating consumer anxieties about disruptions in the food supply while raising awareness of the Utah's Own program with consumers and eligible producers. This campaign delivered more than 8.6 million total impressions and led to a significant increase in Utah's Own membership and renewed opportunities for industry collaboration.



PLANT INDUSTRY DIVISION

The division of Plant Industry is responsible for ensuring consumers of disease-free and pest-free plants, grains and seeds, properly labeled agricultural commodities, and the safe application of pesticides and farm chemicals.

MAJOR PROGRAMS

- Apiary (Beekeeping) Program
- Feed Program
- Fertilizer Program
- Grain Program
- Hay Program
- Insects and Pests Program
- Noxious Weeds Program
- Nursery Program
- Organic Certification Program
- Pesticide Program
- Plant Commodity, Grading, and Shipping Program
- Seed Lab and Testing Program

DIVISION HIGHLIGHTS

The Division of Plant Industry received the Governor's Award for Excellence on May 15, 2019. The Division's Animal Feed Program was recognized for its dedication, innovation and efficiency. Feed program personnel were recognized for their efforts in monitoring and testing for mycotoxins in feeds, noxious weeds in bird feeds and the illegal use of cannabis products in pet feeds.



Award recipients pictured left to right are: Brent Ure, Kari Ure, Mark Ashcroft, Kasey King and Mika Roberts with Lieutenant Governor Spencer Cox on the far left and Governor Gary Herbert on the far right.

PLANT INDUSTRY DIVISION

CHERRY DIVERSION

The Cherry Industry Administrative Board (CIAB) administers a marketing order at the request of, by the vote of, and at the expense of the tart cherry industry. The CIAB was created to assist the industry in dealing with the erratic production cycle of red tart cherries and to improve returns to the growers and processors of red tart cherries in the United States.

The CIAB regulates the processors (aka handlers) of tart cherries. It impacts processors by establishing the portion of each year's production that must be moved into alternative outlets or through other options. The order establishes the tools and mechanisms to deal with surpluses or shortfalls of supply for processors.

Division employees assisted 19 different tart cherry growers and/or processors in implementing the protocols of the cherry diversion program in their orchards and processing plants.

**UTAH IS THE NATION'S SECOND LEADING
PRODUCER OF TART CHERRIES**



FRUIT AND VEGETABLE INSPECTION

3,021,761 lbs

In 2019, 3,021,761 pounds of onions were inspected at the request of three growers for US No. 1 grade certification following established USDA-FFV marketing standards.

PLANT INDUSTRY DIVISION

FERTILIZER PROGRAM

UDAF's Fertilizer Program administers the Utah Fertilizer Act, which regulates the registration, distribution, sale, use and storage of fertilizer products. Major functions in 2019 include:

532	Fertilizer Registrants	6,218	Fertilizer Products Registered
257	Official Samples Submitted for Analysis	21	Number of those Samples Not Registered at the Time of Sampling
12	Number of Samples in Violation of the Guaranteed Analysis	4.7%	Violation Percentage
58	Number of Fertilizer Blender Licenses Issued	2	Number of Citations Issued

COMMERCIAL FEED

UDAF's Commercial Feed Program administers the Utah Commercial Feed Act and involves regulating the registration, manufacture, distribution and sale of feed products. UDAF regulates customer formula feed manufacturers and takes samples of commercial feed products for testing and analysis. Major functions of 2019 include:

918	Feed Registrants	16,591	Feed Products Registered
345	Official Samples Submitted for Analysis	77	Number of those Samples Not Registered at the Time of Sampling
8	Number of Samples in Violation of the Guaranteed Analysis	2.3%	Violation Percentage
57	Number of Custom Formula Feed Mix Licenses Issued	2	Number of Citations Issued

PLANT INDUSTRY DIVISION

SEED INSPECTION AND TESTING PROGRAM

UDAF's Seed Inspection and Testing Program is responsible for the administration of the Utah Seed Act and involves the inspection and testing of seeds offered for sale in Utah. The Utah Seed Control Officials issue letters of violation on all lots of seeds that are in violation of the seed act. The labelers of the seed have 15 days to correct the violation. Inspectors make an inspection of the seed lots to determine if the violation has been promptly corrected. Seed lots are withheld from sale until the violation is corrected. Major functions in 2019 include:

470 Official Samples Submitted for Analysis

1,764 Number of Service Samples Submitted by Industry

2,234 Total Number of Seed Samples

62 Number of Samples in Violation

11 Number of Citations Issued

7.58% Violation Percentage

8 Number of Bird Seed Feed Samples Screened for Noxious Weeds

NURSERY PROGRAM

UDAF's Nursery Program exists to protect Utah's nursery and landscape industries by monitoring for, intercepting and preventing the spread of pests on nursery stock, as well as ensuring pest-free and healthy plant materials offered for sale to the public and for interstate commerce.

Program highlights for 2019 include:

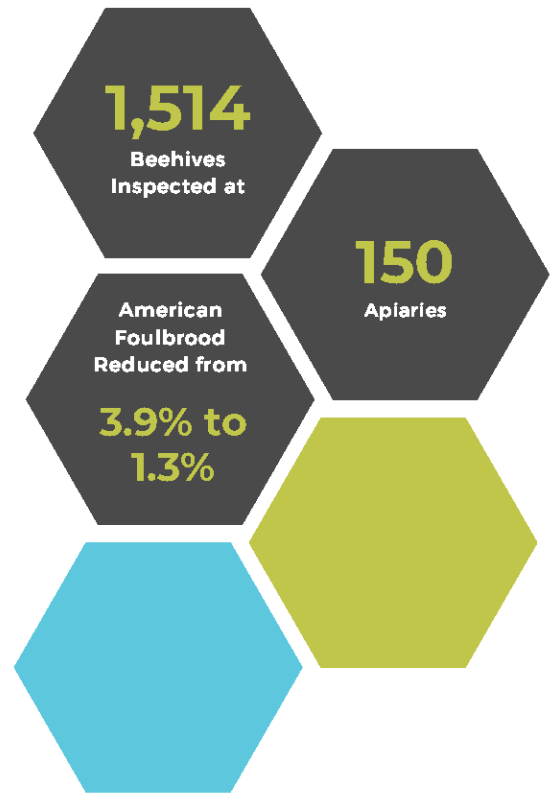
- ▶ Facilitated 6 Compliance Agreements
- ▶ Reviewed over 2,000 interstate plant shipments for quarantine compliance.
- ▶ Inspected 665 of 751 Commercial Nurseries Registered with UDAF in 2019

PLANT INDUSTRY DIVISION

APIARY (BEEKEEPING) INSPECTIONS:

In 2019, state inspectors checked 1,514 beehives in 150 apiaries for diseases and pests that are known to harm honey bees. The rate of American foulbrood (AFB) *Paenibacillus larvae*, the most deadly and contagious of the brood diseases, was only found in 1.3% of hives inspected. This was encouraging because in 2018 3.9% of hives inspected had AFB, a rate substantially higher than than the Apiary Program's target of less than 1% of colonies. The reduced rate in 2019 demonstrated the effectiveness of increased inspection efforts in response to outbreaks in the previous year.

Unfortunately, there was a sharp rise in European foulbrood (EFB) *Melissococcus plutonius* disease in 2019 (6.1%) compared to the previous year (4.4%). EFB is a less serious disease than AFB, but the elevated rate is nonetheless worrisome and will continue to be a concern in 2020. Varroa mite *Varroa destructor*, the most devastating honey bee parasite, and a condition associated with this pest known as parasitic mite syndrome (PMS), were overall down compared to last year. This was likely due to a UDAF Apiary Program-organized outreach efforts prior to peak Varroa mite population growth.



PLANT INDUSTRY DIVISION

INSECT AND PEST PROGRAM

Managing insects is essential to the department's mission to "promote the healthy growth of Utah agriculture, conserve our natural resources and protect our food supply."

Although most insects are beneficial, pest infestations can be devastating and UDAF's Plant Industry has been addressing insect issues since pioneer agriculture began here 160 years ago.

Some economic estimates of losses to U.S. food crops due to pests approach 40%. Both newly introduced insects and outbreaks of endemic species can cause sudden losses much like a natural disaster. Trends that contribute to this potential devastation include erratic weather patterns and climate change, intensive monoculture farming methods, and global commerce; which commonly transports materials of risk great distances. The UDAF Plant Industry Insect Program aims to protect Utah agriculture, food and quality of life from losses due to insects.

Invasive Species Detection:

- **Japanese Beetle:** In 2019 Japanese beetle traps were placed across the state in all 29 counties, yielding the location of 36 target specimens in Salt Lake City's west-side industrial district and 7 beetles found in Davis County for a total of 43 beetles.
 - Next season's proposal will include high density trapping in areas where beetles were detected to determine the distribution of this nascent population and eradication efforts will be recommended to the Emergency Decision & Action Committee.
- **Gypsy Moth:** 2,160 European Gypsy moth traps were deployed around the state, yielding no pests. Only one gypsy moth has been detected in Utah within the last ten years. Standard detection efforts will continue in 2020.
- **Emeral Ash Borer:** Upon announcing that USDA Animal Plant Health Inspection Service (APHIS) would suspend their trapping program for the invasive ash boring pest, emerald ash borer, in uninfested states, UDAF stepped in to deploy its own traps in 2019. A total of 51 traps were placed in eight counties. No target pests were detected.
- **European Corn Borer:** Eight counties were surveyed for European corn borer, a pest of corn and other field crops. A total of 85 traps yielded no target pests.
- **Pine Shoot Beetles:** 22 traps for the invasive pine boring insect, pine shoot beetle, were placed in five different counties. None were found in any of the trapping sites.



REGULATORY SERVICES DIVISION

Protecting the safety and integrity of the food supply is one of the Utah Department of Agriculture and Food's core functions.

The UDAF Division of Regulatory Services operates with regulatory oversight of a wide spectrum of programs to ensure wholesome, clean, and uniform products throughout the state. The division works tirelessly using its many tools to protect consumers and promote agriculture.

REGULATORY SERVICES PROGRAMS

- ▶ **Bedding, Upholstered Furniture, & Quilted Clothing Program**
- ▶ **Dairy Compliance Program**
- ▶ **Egg & Poultry Grading Program**
- ▶ **Manufactured Food Program**
- ▶ **National Shellfish Sanitation Program**
- ▶ **Retail Food Program - including the Cottage Food Program, & Homemade Food Production**
- ▶ **Utah Produce Safety Program**
- ▶ **Weights and Measures**

REGULATORY SERVICES DIVISION

BEDDING, UPHOLSTERED FURNITURE, & QUILTED CLOTHING PROGRAM

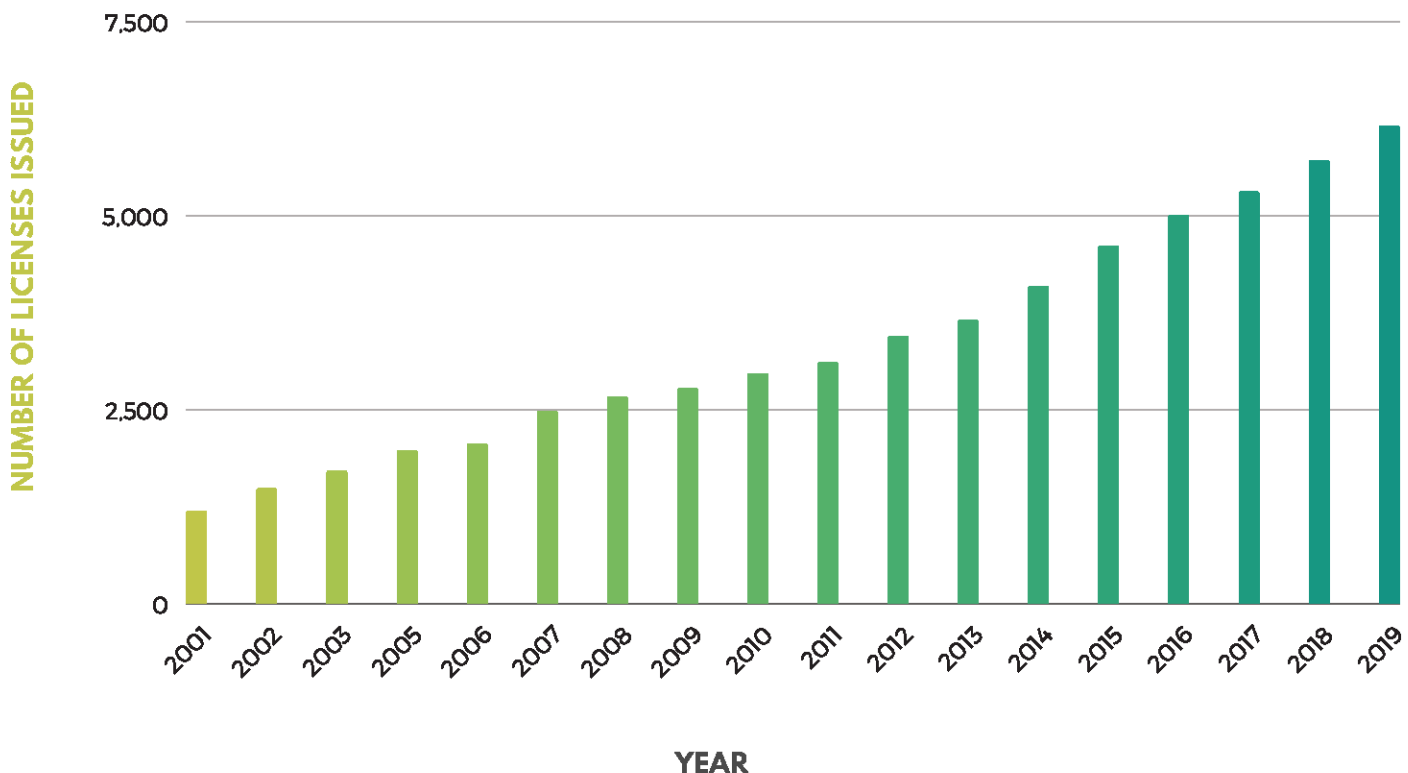
The purpose of the Bedding, Upholstered Furniture, and Quilted Clothing Program is to protect consumers against fraud and product misrepresentation, to assure Utahns hygienically clean products and to provide allergy awareness. This enables consumers to make informed buying decisions based on price, value and performance and helps maintain equality in the marketplace for manufacturers. Utah law requires manufacturers, supply dealers, wholesalers, sterilizers and repairers of these products and their components to obtain an annual license before offering items for sale within the state. Products in retail markets are inspected to ensure compliance and Utah's manufacturing sites are inspected for cleanliness and truthful labeling.



In 2019, UDAF issued approximately 6,150 licenses, generating nearly \$600,000 in revenue

The number of active licenses has more than quadrupled since 2001. Annual license fees make the program self-sustaining and allow laboratory-testing of suspect products to determine whether their contents are accurately labeled and free from filth and other contaminants.

NUMBER OF BEDDING, UPHOLSTERED FURNITURE, & QUILTED CLOTHING LICENSES ISSUED 2001-2019



REGULATORY SERVICES DIVISION

DAIRY COMPLIANCE PROGRAM

The number of Grade A dairies in Utah continues to decline and this decline in dairy farms is accelerating faster than at any previous time period. Dairies vary greatly in size, from 10 cows to 7,200 cows. As in the past, the large dairies continue to grow as the small dairies drop out. Milk production per cow continues to rise as producers must become more efficient in order to stay competitive. During 2019, market trends were fluctuating; producers statewide were asked by buyers to maintain but not increase production as there were not as many markets for milk.

150

Total Dairy Farms
in Utah

533

Average Herd
Size in Utah

27.47

Thousand Pounds
of Avg Milk
Production Per
Cow

100,000

Total Milk Cows
in Utah

2.322

Billion Pounds of
Total Milk
Production



REGULATORY SERVICES DIVISION

EGG & POULTRY GRADING PROGRAM

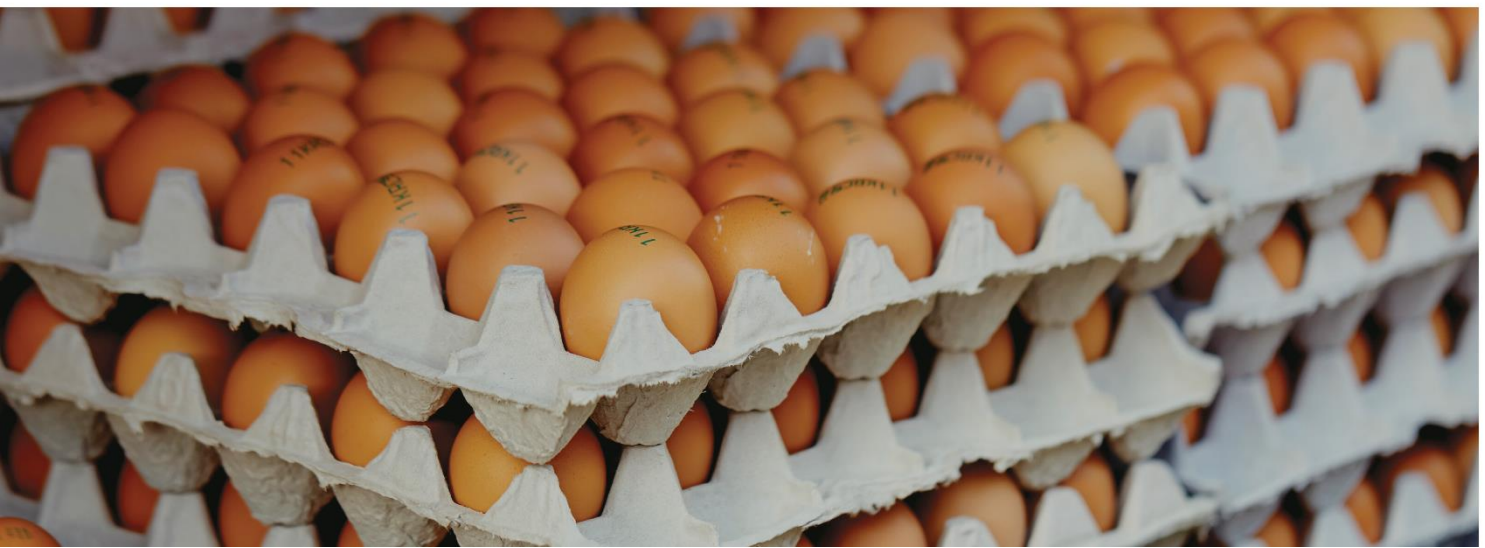
The Egg and Poultry Grading Program provides a needed grading service to the industry and consumers of Utah, the United States and throughout the world. Grading provides a standardized means of advertising the marketability of a particular commodity. Through the application of uniform grade standards, both eggs and poultry can be classified according to a range of quality characteristics. This allows buyers, sellers and consumers to communicate about these characteristics through a common language. The use of the official USDA grade shield certifies that both eggs and poultry have been graded under the continuous inspection of federally licensed grading personnel. USDA's grading services are voluntary and self-funded. Egg packers and poultry processors who request this service pay for all services involved.

PROGRAM ACTIVITIES INCLUDE:

- Shell Egg Grading
- Egg Products Inspection
- Shell Egg Surveillance
- Poultry Grading
- Commodity Destination Inspections
- Federal Purchase Program

FY2020 STATISTICS AT A GLANCE

- 27.69 million lbs of poultry graded
- 97 million dozen shell eggs graded
- 276 samples of shell eggs surveilled
- 74.33 million lbs of egg products inspected



REGULATORY SERVICES DIVISION

REGULATORY FOOD PROGRAMS

UDAF inspectors are well-trained food safety professionals and licensed environmental health scientists. They use their experience and expertise to evaluate risks to the food supply during the processing, storage and transportation of food throughout the state of Utah. They are knowledgeable in assessing and evaluating the safety of high-risk food processes and offer industry stakeholders reasonable solutions in complying with state and federal food safety regulations. When critical or priority violations are noted, our inspectors complete follow-up inspections of these facilities in a timely manner to confirm corrective actions have been performed.

As farmers markets are becoming increasingly popular, UDAF inspectors have been working with market coordinators to ensure their food vendors are registered with the department or are permitted by the local health department. Inspectors educate market coordinators to ensure all of the food safety regulations are followed when inspectors are not present. A major part of this education is ensuring market coordinators are aware of their responsibilities in ensuring the food that is sold and sampled at their markets follows all food safety regulations.

Cottage Food Program

Currently there are 429 registered Cottage Food Facilities. Inspectors visit each new Cottage Food Establishment for a consultation prior to opening and provide education on food safety techniques and regulations. Managing this program is labor intensive as many facilities require additional food safety education to ensure they comply with regulations.

Manufactured Food Program

The Manufactured Food Program is a state/federal program that serves the state of Utah by monitoring, inspecting, and regulating all food processing firms in the state. There are approximately 1,000 food processors in Utah that are prioritized for inspections based on their assigned risk category. The year 2019 saw the manufactured food program make more strides towards contributing to the national integrated food safety system. Our work with our FDA partners has been very successful at finding and eliminating food-related hazards before they become larger problems like foodborne illness outbreaks.

Homemade Food Program

With the addition of the Homemade Food Act, additional training has been provided to market coordinators to ensure the correct foods are being processed in the home and are labeled correctly before being given to the informed final consumer.

Retail Food Program

The Retail Food Program includes 3,943 registered food facilities and completed 5,162 inspections of these facilities including: 3,994 routine inspections, 614 followup inspections, 169 pre-opening inspections and 384 other inspections including complaints, consultations and plan review inspections. Specialized inspector types include Meat Compliance, Juice HACCP and Shellfish Inspections. The expertise of these inspectors greatly benefits the department in being able to more quickly assist other inspectors and food establishment operators when they have difficult regulatory questions.

REGULATORY SERVICES DIVISION

Food Recalls and Complaints

The Regulatory Division monitors recalls involving food products that pose a public health threat with Class I recalls being the priority.

▶ **Of the 565 recall notices from USDA, FDA and industries during this reporting period, our monitoring showed there were 21 recalls of food products that came to Utah.**

UDAF's Regulatory Division utilized our industry contacts to monitor progress on removing recalled products from commerce and notified the state and local health departments of recalls affecting food service establishments. The division took significant actions on recalls when it was discovered through recall audit checks that industry had not responded appropriately, leaving recalled products on store shelves for sale to the public. Similar to previous years, most recalls were related to food allergens (10), but eleven of the recalls affecting Utah were due to pathogen or foreign material contamination of the food products and foodborne illness outbreaks.



As in past years, many of the complaints concerned dogs in stores and foreign materials in food ranging from metal shards, glass shards, wood chips, insects and burned dough that sometimes appears to be rodent droppings. Every year we receive a number of complaints about poor sanitation in some of our regulated facilities and complaints about a food product that the consumer feels made them sick. We also receive foodborne illness complaints from the state foodborne illness reporting website (igotsick.health.utah.gov). The division continues to work with our state and local partners to improve the reporting tool and to make it more effective. The Regulatory Division takes consumer complaints seriously and division management monitors responses to complaints to ensure that a thorough job of responding to and solving issues occurs on complaints that Utah consumers report to UDAF.

REGULATORY SERVICES DIVISION

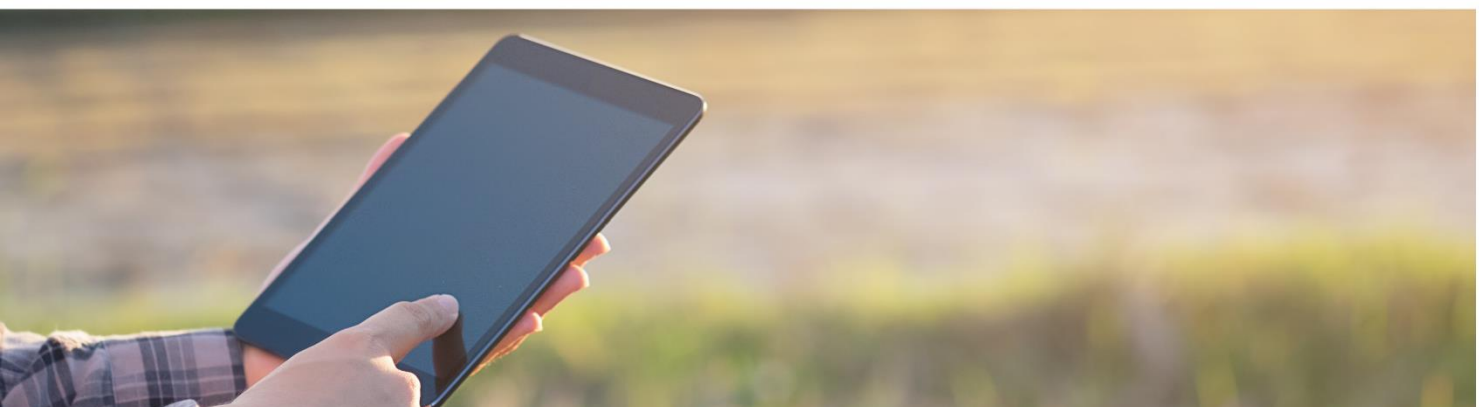
NATIONAL SHELLFISH SANITATION PROGRAM (NSSP)

The National Shellfish Sanitation Program (NSSP) is the federal/state cooperative program recognized by the U.S. Food and Drug Administration (FDA) and the Interstate Shellfish Sanitation Conference (ISSC) for the sanitary control of shellfish produced and sold for human consumption. The purpose of the NSSP is to promote and improve the sanitation of shellfish (oysters, clams, mussels and scallops) moving in interstate commerce through federal/state cooperation and uniformity of state shellfish programs. Participants in the NSSP include agencies from shellfish producing and non-producing states, FDA, EPA, NOAA, and the shellfish industry. Utah adopts by reference the NSSP Model Ordinance by rule to ensure safe shellfish consumption.

UTAH PRODUCE SAFETY PROGRAM

The Utah Produce Safety Program exists to create an integrated food safety system and improve the quality of food products to the public by reducing foodborne illness in accordance with the Food Safety Modernization Act (FSMA). 2019-2020 Program highlights include:

- **Legislative and Regulatory Authority:** A new bill was introduced and passed by the legislature allowing for the adoption of 21 CFR 112- the Produce Safety Rule (PSR) by reference. This gives UDAF authority under state law to conduct Produce Safety Inspections in Utah.
- **Farm Inventory:** A great deal of progress was made with farm verification and updates to our Utah Produce Farm list which has grown from about 110 farms to 225 farms. This list contains all of the fields required by FDA in the Grant CAP and additional fields have been added to help our program better monitor produce farms in Utah.
- **Education and Outreach:** 11 Produce Safety Alliance Grower Trainings have been completed throughout the state of Utah and 136 individuals have completed the training. Plant Industry was able to conduct 18 On Farm Readiness Review visits helping farmers be better prepared for Produce Safety Inspections. Numerous educational materials were created to train farmers and farm workers.
- **Regulatory Inspections:** The Produce Safety Inspectors in Utah have worked very hard to increase their training and complete inspections throughout the state. In last year's harvest season UDAF inspectors were successful with completing inspections on nearly every large farm that was verified and this coming harvest season we will inspect the newly verified large farms and all of the small farms verified on the Produce Farm List.



REGULATORY SERVICES DIVISION

WEIGHTS & MEASURES PROGRAM

The Weights and Measures Program is a part of each of our lives; whether you are fueling your car, buying a cake mix off the shelf, traveling on state roads, or getting a diamond for someone special, the Weights and Measures program is there for you. The purpose of this program is to ensure that equity prevails in the marketplace and that commodities bought or sold are accurately weighed or measured and properly identified. One goal of the program is to prevent fraud by routinely conducting unannounced inspections and educating both the buyer and supplier. This division also contains the Metrology Lab which houses the state's primary standards of mass, length, and volume; conducts tests and certifies mass and volume standards used by industry and businesses.

LARGE SCALES

THESE DEVICES INCLUDE SCALES USED FOR WEIGHING LIVESTOCK, COAL, GRAVEL, VEHICLES AND SIMILAR ITEMS. A TOTAL OF 1,509 ESTABLISHMENTS THAT HAVE LARGE CAPACITY SCALES WERE INSPECTED IN 2019.

SMALL SCALES

INCLUDES 2,696 BUSINESSES AND 9,742 DEVICES FROM GROCERY STORE CHECK STANDS, BUTCHERS, SHIPPING, ETC. AND PRECISION SCALES USED IN PAWN SHOPS, GOLD BUYING, AND CANNABIS.

PRICE VERIFICATION

INCLUDES 2,871 BUSINESSES AND 10,696 DEVICES. ALL BUSINESSES THAT USE A CHECK-OUT REGISTER AT THE FINAL POINT OF SALE AS A MEANS FOR PRICING FOR COMMERCIAL SALES ARE SUBJECT TO INSPECTION.

MOTOR FUEL

THIS YEAR WE INSPECTED 21,913 OUT OF 36,378 FUEL PUMPS IN THE STATE. THE GOAL IS TO INSPECT DEVICES EVERY 18 MONTHS. UDAF DETECTED 237 FAILED INSPECTIONS IN 2019.

METROLOGY LAB

SETS STANDARDS THAT ARE USED IN CALIBRATION SERVICES FOR GOVERNMENT, INDUSTRY, AND BUSINESSES THAT ARE THE FOUNDATION FOR ASSURING EQUITY IN THE MARKETPLACE. CALIBRATIONS PERFORMED IN THE LABORATORY ARE TRACEABLE TO THE NATIONAL INSTITUTE OF STANDARDS AND TECHNOLOGY.



2020 UTAH AGRICULTURAL STATISTICS

Rank & Quantity Produced, Selected Commodities – Utah, Leading State, & United States: 2019

Commodity	Unit	Utah		Leading State		United States
		Rank	Production	State	Production	
Field Crops						
Barley.....	(1,000 Bu)	15	930	Idaho	54,080	169,566
Corn, Grain	(1,000 Bu)	41	3,718	Iowa	2,583,900	13,617,261
Corn, Silage	(1,000 Tons)	24	1,320	Wisconsin	18,200	132,807
Hay, All	(1,000 Tons)	20	2,618	Texas	9,216	128,864
Hay, Alfalfa	(1,000 Tons)	12	2,193	Montana	4,515	54,875
Hay, Other	(1,000 Tons)	37	425	Texas	8,640	73,989
Safflower Production	(1,000 Lbs)	4	13,335	California	111,150	194,295
Wheat, Winter.....	(1,000 Bu)	23	6,264	Kansas	338,000	1,304,003
Fruits						
Tart Cherry Production	(Mil Lbs)	2	54	Michigan	170	262
Livestock ¹						
All Cattle & Calves	(1,000 Head)	34	820	Texas	13,000	94,413
All Cows ²	(1,000 Head)	33	455	Texas	5,150	40,651
Calf Crop	(1,000 Head)	31	400	Texas	4,600	36,060
Beef Cows ²	(1,000 Head)	27	358	Texas	4,570	31,317
Milk Cows ²	(1,000 Head)	21	97	California	1,725	9,335
Milk Production	(Mil Lbs)	21	2,262	California	40,564	218,382
All Chickens (Excl Broilers) ...	(1,000 Head)	22	5,972	Iowa	71,883	532,498
Layers on Hand Dec. 1	(1,000 Head)	22	4,642	Iowa	58,698	403,273
Egg Production ³	(Mil Eggs)	21	1,450	Iowa	17,084	113,253
All Hogs & Pigs	(1,000 Head)	15	960	Iowa	25,100	79,048
Breeding Hogs & Pigs	(1,000 Head)	16	80	Iowa	1,010	6,471
Pig Crop ³	(1,000 Head)	16	1,784	Iowa	24,377	140,192
Market Hogs & Pigs	(1,000 Head)	15	880	Iowa	24,090	72,577
Honey Production ⁴	(1,000 Lbs)	27	638	North Dakota	33,800	156,922
All Sheep & Lambs	(1,000 Head)	5	285	Texas	735	5,200
Breeding Sheep & Lambs	(1,000 Head)	4	240	Texas	585	3,810
Lamb Crop	(1,000 Head)	3	230	Texas	370	3,230
Market Sheep & Lambs	(1,000 Head)	8	45	California	245	1,306
Wool Production	(1,000 Lbs)	4	2,140	California	2,400	24,010
Trout Sold, Excl Eggs	(1,000 Dollars)	6	1,629	Idaho	37,416	95,572
Miscellaneous						
Farms.....	(Number)	37	17,800	Texas	247,000	2,023,400
Land in Farms.....	(1,000 Acres)	26	10,700	Texas	126,500	897,400
Average Size of Farm	(Acres)	12	601	Wyoming	2,417	444

¹ Inventory January 1, 2020 for cattle & sheep; December 1, 2019 for hogs & chickens.

² Cows & heifers that have calved.

³ Pig crop & egg production for the marketing Year December 1, 2018-November 30, 2019.

⁴ Honey production by marketing year.

Record Highs & Lows: Acreage, Yield, & Production of Crops – Utah

Units	Record High		Record Low		Record Began
	(Quantity)	(Year)	(Quantity)	(Year)	(Year)
Corn for Grain					
Harvested (1,000 Acres)	34	2012	2	1963, 1966	1882
Yield (Bushels/Acre)	182.0	2018	14.7	1889	1882
Production.. (1,000 Bushels)	5,678	2012	85	1934	1882
Corn for Silage					
Harvested..... (1,000 Acres)	80	1975, 1976	2	1920-1922	1919
Yield (Tons/Acre)	25.0	2011, 2017	6.0	1934	1919
Production..... (1,000 Tons)	1,501	1980	17	1921	1919
Barley					
Harvested..... (1,000 Acres)	190	1957	8	1898	1882
Yield (Bushels/Acre)	93.0	2019	22.0	1882	1882
Production.. (1,000 Bushels)	12,880	1982	242	1882	1882
Oats					
Harvested..... (1,000 Acres)	82	1910	2	2015	1882
Yield (Bushels/Acre)	85.0	2002, 2015	25.0	1882, 1883	1882
Production.. (1,000 Bushels)	3,338	1914	170	2015	1882
All Wheat					
Harvested..... (1,000 Acres)	444	1953	65	1880, 1881	1879
Yield (Bushels/Acre)	59.9	2016	15.4	1919	1879
Production.. (1,000 Bushels)	9,750	1986	1,139	1882	1879
Other Spring Wheat					
Harvested..... (1,000 Acres)	119	1919, 1920	7	2007	1919
Yield (Bushels/Acre)	65.0	1995	18.7	1919	1919
Production.. (1,000 Bushels)	3,366	1953	390	2002	1919
Winter Wheat					
Harvested..... (1,000 Acres)	342	1953	94	2018	1909
Yield (Bushels/Acre)	60.0	2016	12.7	1919	1909
Production.. (1,000 Bushels)	8,100	1986	1,862	1924	1909
All Hay					
Harvested..... (1,000 Acres)	760	2011	402	1909	1909
Yield (Tons/Acre)	3.93	1999	1.77	1924	1909
Production..... (1,000 Tons)	2,788	1999	679	1934	1909
Alfalfa Hay					
Harvested..... (1,000 Acres)	580	2011	359	1934	1919
Yield (Tons/Acre)	4.40	1993, 1998, 1999	1.67	1934	1919
Production..... (1,000 Tons)	2,420	1999	600	1934	1919
Other Hay					
Harvested..... (1,000 Acres)	180	2011	75	1934	1919
Yield (Tons/Acre)	2.50	2019	0.85	1934	1919
Production..... (1,000 Tons)	425	2019	64	1934	1919
Safflower					
Harvested..... (1,000 Acres)	31	2010	13	2019	2010
Yield (Lbs/Acre)	1,050	2019	430	2012	2010
Production..... (1,000 Lbs)	22,940	2010	9,890	2012	2010
Apples					
Utilized Prod..... (Million Lbs)	63	1987	3	1889	1889
Apricots					
Utilized Prod..... (Tons)	10,000	1957	0	1972, 1975, 1999	1929
Peaches (Freestone)					
Utilized Prod..... (Tons)	22,100	1922	750	1972	1899
Sweet Cherries					
Utilized Prod..... (Tons)	7,700	1968	0	1972	1938
Tart Cherries					
Utilized Prod..... (Million Lbs)	50	2014	1	1972	1938

Record Highs & Lows: Livestock, Poultry, Honey, & Mink – Utah

Units	Record High		Record Low		Record Began
	(Quantity)	(Year)	(Quantity)	(Year)	(Year)
Cattle & Calves					
Inventory Jan. 1(1,000 Hd)	950	1983	95	1867	1867
Calf Crop (Annual)(1,000 Hd)	400	2000, 2001, 2019	310	1935, 1984	1920
Beef Cows Jan. 1 ¹(1,000 Hd)	374	1983	107	1939	1920
Milk Cows Jan. 1 ¹(1,000 Hd)	126	1945	14	1867	1867
Milk Production (Annual) (Million Lbs)	2,322	2018	412	1924	1924
Cattle on Feed Jan. 1(1,000 Hd)	81	1966	20	2017, 2018, 2020	1942
Hogs & Pigs					
Inventory Dec. 1 ²(1,000 Hd)	960	2019	4	1866-1868	1866
Sheep & Lambs					
Total Inventory Jan. 1(1,000 Hd)	2,935	1931	260	2004	1920
Breeding Inventory Jan. 1(1,000 Hd)	2,775	1931	157	1867	1867
Lamb Crop (Annual)(1,000 Hd)	1,736	1930	220	2010	1924
Mkt Shp & Lmbs Jan. 1(1,000 Hd)	70	1995	18	1988	1937
Chickens					
Layers Dec. 1(1,000 Hd)	5,252	2016	1,166	1935	1925
Egg Production ³(Million Eggs)	1,513	2017	142	1924	1924
Honey					
Production (Annual) ⁴ (1,000 Lbs)	4,368	1963	638	2019	1913
Mink					
Pelts Produced (1,000 Pelts)	959	2014	283	1973	1969

¹ Cows & heifers two years old & over prior to 1970; cows that have calved beginning in 1970.

² January 1, estimates discontinued in 1969. December 1 estimates beginning in 1969.

³ Annual egg production estimates cover the period December 1 previous year through November 30.

⁴ Honey production is by marketing year.

Census of Agriculture: Producer & Farm Characteristics of Veterans, Young Producers, & New & Beginning Producers - Utah: 2017

Characteristic	All Producers	Veterans	Young Producers ¹	New & Beginning Producers ²
Producers.....	32,495	2,554	3,392	9,198
Farms.....	18,409	2,467	2,526	5,888
Land in Farms.....	10,811,604	926,918	1,019,791	2,924,661
Farms by Size:				
1 to 9 Acres.....	6,181	798	908	2,403
10 to 49 Acres.....	5,254	723	639	1,663
50 to 179 Acres.....	3,159	412	438	890
180 to 499 Acres.....	1,768	257	247	459
500 acres or More.....	2,047	277	294	473
Value of Ag Products Sold.....Farms	18,409	2,467	2,526	5,888
.....\$1,000	1,838,610	117,757	315,472	351,859
Value of Crops.....Farms	8,326	1,133	963	2,316
.....\$1,000	560,956	39,394	109,079	126,513
Value of Livestock.....Farms	9,728	1,208	1,565	3,138
.....\$1,000	1,277,653	78,363	206,393	225,347
Farms by Economic Class:				
Less than \$1,000.....	5,642	823	728	2,053
\$1,000 to \$2,499.....	2,120	292	314	778
\$2,500 to \$4,999.....	2,015	314	183	657
\$5,000 to \$9,999.....	2,198	277	307	716
\$10,000 to \$24,999.....	2,214	264	339	632
\$25,000 to \$49,999.....	1,229	176	163	310
\$50,000 or More.....	2,991	321	492	742
Sex of Producer:				
Male.....	20,759	2,468	2,098	5,583
Female.....	11,736	86	1,294	3,615
Primary Occupation:				
Farming.....	10,711	1,249	952	2,039
Other.....	21,784	1,305	2,440	7,159
Years on Present Farm:				
2 Years or Less.....	1,948	76	712	(N/A)
3 or 4 Years.....	2,847	142	760	(N/A)
5 to 9 Years.....	4,951	202	1,192	(N/A)
10 Years or More.....	22,749	2,134	728	(N/A)
Years Operating Any Farm:				
5 Year or Less.....	4,934	207	1,705	(N/A)
6 to 10 Years.....	4,264	206	978	(N/A)
11 Years or More.....	23,297	2,141	709	(N/A)
Age Group:				
Under 25 Years.....	538		538	538
25 to 34 Years.....	2,385	54	2,385	1,867
35 to 44 Years.....	4,911	98	469	2,510
45 to 54 Years.....	5,498	176	(N/A)	1,570
55 to 64 Years.....	8,832	301	(N/A)	1,690
65 to 74 Years.....	6,767	1,034	(N/A)	772
75 years or Greater.....	3,564	891	(N/A)	251
Average Age.....	56.3	69.6	(N/A)	45.3

¹ A young producer is defined as a producer 35 years of age or younger.

² This new category includes producers operating on any operation for 10 years or less. They may be on farms with producers who are not beginning producers.

Census Of Agriculture: Producer Demographics - Utah: 2017

District & County	Farms	Producer's Age and Race ¹							
		Avg. Age	All	Hispanic	Female	American Indian	Asian	Black	Native Hawaiian
Northern									
Box Elder	1,187	55.0	2,152	49	674	7	16	-	-
Cache	1,397	56.5	2,479	31	817	3	-	-	6
Davis.....	528	60.7	894	7	363	5	27	-	-
Morgan	372	55.4	645	8	228	4	-	-	-
Rich.....	160	55.9	299	-	101	-	1	-	-
Salt Lake.....	592	58.9	1,154	31	415	3	13	-	-
Tooele.....	540	53.9	946	35	386	8	-	2	2
Weber	1,260	58.8	2,166	39	774	9	18	-	-
Central									
Juab	292	57.5	580	6	168	10	-	-	-
Millard	654	56.8	1,127	20	338	2	-	-	-
Sanpete	1,003	55.6	1,740	34	567	4	7	-	-
Sevier.....	691	54.9	1,243	22	409	5	1	-	3
Utah	2,589	56.0	4,741	71	1,695	-	9	-	15
Eastern									
Carbon	309	54.3	564	14	193	2	-	-	-
Daggett	52	56.5	96	-	44	2	-	-	1
Duchesne	1,063	54.1	1,951	59	739	46	2	-	3
Emery	504	54.7	882	5	315	2	-	-	-
Grand.....	102	55.5	195	1	80	1	-	-	-
San Juan	823	56.8	1,669	5	821	1,163	-	-	-
Summit.....	626	58.2	1,144	11	387	-	1	-	-
Uintah	1,114	54.3	2,004	47	751	90	3	-	2
Wasatch.....	475	59.1	796	7	272	2	-	1	-
Southern									
Beaver	272	56.1	502	12	114	-	-	1	-
Garfield	286	56.5	529	14	168	-	2	-	-
Iron.....	486	57.6	878	18	274	2	-	2	-
Kane	182	53.3	357	2	116	-	-	-	-
Piute.....	104	54.5	194	-	46	-	-	-	-
Washington.....	537	60.1	1,084	8	367	1	-	-	-
Wayne.....	209	54.2	357	2	114	2	-	2	-
State Total	18,409	56.3	33,368	558	11,736	1,373	100	8	32

- Represents zero.

¹ Demographic information was collected for up to four (4) operators for each operation.

Number of Farms, Land in Farms, & Average Farm Size – Utah & United States: 2010-2019

[Annual sales of agricultural products of \$1,000 or more.]

Year	Utah			United States		
	Number of Farms	Land in Farms	Average Farm Size	Number of Farms	Land in Farms	Average Farm Size
	(Number)	(1,000 Acres)	(Acres)	(Number)	(1,000 Acres)	(Acres)
2010	17,500	11,000	629	2,149,520	915,660	426
2011	17,900	11,000	615	2,131,240	914,420	429
2012	18,000	11,000	611	2,109,810	914,600	433
2013	18,200	11,000	604	2,100,350	911,720	434
2014	18,200	10,900	599	2,082,440	908,920	436
2015	18,200	10,900	599	2,063,890	905,790	439
2016	18,300	10,800	590	2,055,340	902,680	439
2017	18,400	10,800	587	2,042,000	900,370	441
2018	18,100	10,700	591	2,029,200	899,500	443
2019	17,800	10,700	601	2,023,400	897,400	444

Number of Farms by Economic Sales Class – Utah: 2010-2019

Year	\$1000-\$9,999	\$10,000-\$99,999	\$100,000-\$249,999	\$250,000-\$499,999	\$500,000-\$999,999 ¹	\$1,000,000 & Over ²	Total
	(Number)	(Number)	(Number)	(Number)	(Number)	(Number)	(Number)
2010	10,600	5,100	850	420	530	(2)	17,500
2011	10,700	5,200	880	520	600	(2)	17,900
2012	10,650	5,300	930	540	580	(2)	18,000
2013	10,800	5,300	1,000	530	290	280	18,200
2014	10,900	5,300	930	540	250	280	18,200
2015	11,000	5,200	930	520	280	270	18,200
2016	11,200	5,200	850	490	290	270	18,300
2017	11,200	5,200	910	510	310	270	18,400
2018	11,000	5,100	900	520	310	270	18,100
2019	10,800	5,000	890	510	320	280	17,800

¹ \$500,000 & over before 2013 & \$500,000 - \$999,999 2013 & later.

² \$1,000,000 & over economic sales class not published before 2013.

Farms: Acres by Economic Sales Class – Utah: 2010-2019

Year	\$1000-\$9,999	\$10,000-\$99,999	\$100,000-\$249,999	\$250,000-\$499,999	\$500,000-\$999,999 ¹	\$1,000,000 & Over ²	Total
	(1,000 Acres)	(1,000 Acres)	(1,000 Acres)	(1,000 Acres)	(1,000 Acres)	(1,000 Acres)	(1,000 Acres)
2010	800	2,000	1,300	1,300	5,600	(2)	11,000
2011	700	1,900	1,300	1,400	5,700	(2)	11,000
2012	650	1,750	1,300	1,500	5,800	(2)	11,000
2013	700	1,900	1,400	1,600	3,900	1,500	11,000
2014	700	2,000	1,500	1,900	2,900	1,900	10,900
2015	700	2,000	1,500	2,100	2,200	2,400	10,900
2016	700	2,000	1,400	2,100	1,600	3,000	10,800
2017	600	1,900	1,200	2,100	1,000	4,000	10,800
2018	600	1,900	1,300	2,000	1,000	3,900	10,700
2019	600	1,900	1,300	2,000	1,000	3,900	10,700

¹ \$500,000 & over before 2013 & \$500,000 - \$999,999 2013 & later.

² \$1,000,000 & over economic sales class not published before 2013.

Farm Income: Cash Receipts by Commodity – Utah: 2014-2019

Utah	2014	2015	2016	2017	2018	2019
	\$1,000	\$1,000	\$1,000	\$1,000	\$1,000	\$1,000
All Commodities	2,391,631	1,999,914	1,679,612	1,807,901	1,686,353	1,817,883
Animals & Products	1,849,117	1,528,609	1,238,287	1,349,448	1,200,684	1,277,068
Meat Animals	1,035,355	780,986	632,935	671,783	573,774	658,719
Cattle & Calves	795,236	628,075	492,592	499,351	449,991	492,502
Hogs	240,119	152,911	140,343	172,432	123,783	166,217
Dairy Products, Milk	514,527	375,190	336,636	389,754	371,588	415,880
Poultry & Eggs	178,289	276,852	173,797	189,071	163,340	116,726
Chicken Eggs	107,136	199,491	73,238	102,395	163,332	116,720
Farm Chickens.....	5	8	10	9	8	6
Turkeys.....	71,148	77,353	100,549	86,667	NA	NA
Miscellaneous Animals & Products	120,946	95,581	94,920	98,840	91,982	85,743
Aquaculture	604	630	633	694	997	1,629
Trout.....	604	630	633	694	997	1,629
Honey	1,730	2,177	1,915	1,741	2,239	1,314
Mohair.....	3	3	3	3	3	4
Other Animals & Products	114,540	88,742	88,319	92,442	84,303	78,302
All Other Animals & Products..	59,220	60,970	62,930	65,610	65,470	66,110
Mink Pelts	55,320	27,772	25,389	26,832	18,833	12,192
Wool	4,068	4,029	4,050	3,960	4,440	4,494
Crops	542,514	471,305	441,325	458,453	485,669	540,815
Food Grains	42,043	30,677	30,123	31,569	33,702	31,021
Wheat	42,043	30,677	30,123	31,569	33,702	31,021
Feed Crops	292,487	235,027	192,349	202,148	227,253	287,068
Barley	6,890	3,798	2,721	3,475	4,517	3,752
Corn.....	24,387	15,395	14,550	15,771	14,760	15,878
Hay	260,471	215,435	174,989	182,902	207,976	267,438
Oats.....	738	399	89	NA	NA	NA
Oil Crops	4,218	4,015	2,701	2,430	2,431	1,939
Safflower.....	4,218	4,015	2,701	2,430	2,431	1,939
Vegetables & Melons	7,067	8,084	NA	NA	NA	NA
Onions	7,067	8,084	NA	NA	NA	NA
Onions, Storage	7,067	8,084	NA	NA	NA	NA
Fruits & Nuts	34,029	22,818	24,503	12,531	9,102	6,661
Apples.....	4,907	4,896	NA	NA	NA	NA
Apricots.....	330	7	NA	NA	NA	NA
Cherries	22,711	13,718	17,533	7,600	9,102	6,661
Cherries, Sweet.....	1,217	193	NA	NA	NA	NA
Cherries, Tart	21,494	13,525	17,533	7,600	9,102	6,661
Peaches.....	6,081	4,197	6,970	4,931	NA	NA
All Other Crops.....	162,670	170,685	191,649	209,776	213,181	214,125
Mushrooms.....	7,830	6,170	4,304	12,771	11,786	NA
Miscellaneous Crops	154,840	164,515	187,345	197,005	201,395	214,125

Data as of September 2, 2020.

NA = Data are not available/applicable.

Values are rounded to the nearest thousand.

Data source: USDA Economic Research Service. www.ers.usda.gov

Farm Income Indicators – Utah: 2014-2019

Utah	2014	2015	2016	2017	2018	2019
	\$1,000	\$1,000	\$1,000	\$1,000	\$1,000	\$1,000
Value of Agricultural Sector Production.....	2,565,821	2,339,040	1,901,735	2,017,468	1,965,704	2,122,720
Value of Crop Production	516,538	468,790	453,653	452,133	460,785	560,129
Crop Cash Receipts	542,514	471,305	441,325	458,453	485,669	540,815
Value of Animals & Products Production.....	1,795,292	1,639,184	1,216,624	1,299,618	1,246,803	1,318,018
Animals & Products Cash Receipts.....	1,849,117	1,528,609	1,238,287	1,349,448	1,200,684	1,277,068
Net Government Transactions.....	9,408	-9,926	-16,451	-11,325	7,624	-2,818
Intermediate Product Expenses ¹	1,348,644	1,154,914	937,534	999,571	925,954	962,904
Farm Origin	791,952	680,799	474,687	442,931	414,400	478,915
Feed Purchases.....	520,614	445,718	360,417	336,527	298,915	372,819
Livestock & Poultry Purchases	218,528	198,552	72,645	60,064	57,559	61,928
Seed Purchases	52,810	36,529	41,626	46,340	57,925	44,168
Manufactured Inputs.....	212,096	180,900	162,521	203,100	202,773	185,611
Electricity	36,354	39,821	30,491	48,188	58,334	39,989
Fertilizer, Lime, & Soil Conditioners.....	55,203	53,764	46,249	56,143	53,485	47,837
Pesticides	21,239	18,708	19,854	21,979	18,148	16,535
Fuel & Oils	99,301	68,607	65,928	76,790	72,806	81,250
Other Intermediate Expenses ¹	344,596	293,216	300,326	353,541	308,781	298,378
Machine Hire & Custom Work.....	26,305	16,955	21,867	26,026	21,567	24,025
Marketing, Storage, & Transportation	44,477	35,274	42,613	47,553	32,738	35,409
Repair & Maintenance ¹	108,250	96,184	83,853	114,061	101,471	83,194
Miscellaneous Expenses ¹	165,564	144,803	151,992	165,901	153,004	155,749
Total Insurance Premiums ⁴	31,571	23,531	23,936	31,988	39,376	35,429
Federal Commodity Insurance Premiums....	1,366	1,495	1,121	6,376	12,089	9,501
Irrigation	14,591	15,652	15,380	16,382	11,926	27,118
Contract Labor.....	19,459	10,511	16,138	21,921	19,100	24,156
Gross Value Added	1,207,126	1,163,689	931,611	984,651	1,028,274	1,132,842
Capital Consumption ¹	338,335	271,212	292,069	246,107	200,371	194,105
Net Value Added	868,791	892,477	639,543	738,545	827,903	938,737
Factor Payments to Stakeholders ³	310,336	281,166	308,643	347,104	351,458	272,789
Hired Labor & Non-Cash Employee Compensation	211,206	177,579	203,934	231,044	230,567	161,302
Net Rent Paid to Operator Landlords	1,930	2,092	1,508	1,139	205	-1,071
Net Rent Paid to Non-Operator Landlords.....	12,717	13,781	9,933	7,503	1,350	-7,057
Total Interest Expenses ¹	84,482	87,715	93,268	107,418	119,337	119,615
Net Farm Income.....	558,455	611,310	330,900	391,441	476,445	665,948

Data as of August 30, 2020

F = Forecast values. NA = Data are not available/applicable. Values are rounded to the nearest thousand.

¹ Includes expenses associated with operator dwellings.

² Share rent income is included in cash receipts.

³ Prior to 2008 estimates, factor payments to stakeholders only includes net rent paid to non-operator landlords.

⁴ Includes federal and private crop and livestock insurance premiums as well as casualty, hail, motor vehicle and all other insurance premiums.

Data Source: USDA Economic Research Service. www.ers.usda.gov

Agricultural Exports: Estimated Value by Commodity Group – Utah: 2013-2018

Utah	2013	2014	2015	2016	2017	2018
	Million Dollars					
Beef & Veal	50.8	69.7	50.7	49.2	54.2	56.1
Pork.....	54.4	59.7	41.4	43.8	53.2	37.6
Hides & Skins.....	26.4	28.0	19.2	14.7	14.4	9.5
Other Livestock Products ¹	49.5	48.8	36.3	36.1	44.1	40.1
Dairy Products.....	68.9	74.0	55.0	45.8	55.2	58.0
Broiler Meat.....	0.0	0.0	0.0	0.0	0.0	0.0
Other Poultry Products ²	27.0	29.3	29.2	26.4	31.7	24.2
Vegetables, Fresh	1.1	0.9	1.0	0.0	0.0	0.0
Vegetables, Processed	2.0	1.7	1.9	0.0	0.0	0.0
Fruits, Fresh	7.0	8.0	5.0	5.1	2.6	2.1
Fruits, Processed	6.2	7.2	4.9	4.8	2.3	1.8
Tree Nuts	0.0	0.0	0.0	0.0	0.0	0.0
Rice.....	0.0	0.0	0.0	0.0	0.0	0.0
Wheat.....	31.3	25.8	18.3	18.2	22.0	20.1
Corn	3.5	4.7	2.7	3.1	3.2	3.8
Feeds & Other Feed Grains ³	42.6	46.8	44.9	31.4	32.3	37.0
Grain Products, Processed	18.2	18.2	16.6	13.9	14.7	16.3
Soybeans	0.0	0.0	0.0	0.0	0.0	0.0
Soybean Meal	0.0	0.0	0.0	0.0	0.0	0.0
Vegetable Oils.....	0.2	0.3	0.3	0.2	0.2	0.2
Other Oilseeds & Products ⁴	2.7	5.5	3.5	2.8	2.0	2.1
Cotton.....	0.0	0.0	0.0	0.0	0.0	0.0
Tobacco	0.0	0.0	0.0	0.0	0.0	0.0
Other Plant Products ⁵	89.8	94.7	101.0	113.3	126.7	121.4
Total Agricultural Exports	481.5	523.4	432.0	408.8	458.7	430.0
Total Animal Products	276.9	309.5	231.9	215.9	252.8	225.3
Total Plant Products.....	204.6	213.9	200.1	192.8	206.0	204.7

¹ Includes other non-poultry meats, animal fat, live farm animals, and other animal parts.

² Includes turkey meat, eggs, and other fowl products.

³ Includes processed feeds, fodder, barley, oats, rye, and sorghum.

⁴ Includes peanuts (oilstock), other oil crops, corn meal, other oilcake and meal, protein substances, bran and residues.

⁵ Includes sweeteners and products, other horticulture products, planting seeds, cocoa, coffee, and other processed foods.

Data sources: USDA Economic Research Service; USDA Foreign Agricultural Service (Global Agricultural Trade System)

ANNUAL CROP SUMMARY

2019 UTAH HIGHLIGHTS

The 2019 **corn** for grain crop is estimated at 3.72 million bushels, 7 percent below last year's production of 4.00 million bushels, according to the December 1 Agricultural Survey conducted by the Mountain Regional Field Office of the National Agricultural Statistics Service, USDA. The average yield of 143.0 bushels per acre is 39.0 bushels per acre below the yield achieved last year. Area harvested for grain in 2019, at 26,000 acres, is 4,000 acres above last year. Acreage cut for **corn silage** is estimated at 55,000 acres, up 10,000 acres from last year, with production estimated at 1.32 million tons compared with 1.04 million tons produced last year.

Utah's **barley** seeded area, at 17,000 acres, is down 4,000 acres from last year. Harvested area, at 10,000 acres, is down 6,000 acres from 2018. Barley yield at a record high 93.0 bushels per acre, is up 7.0 bushels per acre from last year. Barley production in 2019 is estimated at 930,000 bushels, down 32 percent from the previous year.

Winter wheat producers seeded 125,000 acres in the fall of 2018 for harvest in 2019, up from the 120,000 acres seeded for the previous year's crop. Acreage harvested for grain increased 22,000 acres from last year to 116,000 acres in 2019. Winter wheat production is estimated at 6.26 million bushels, up 28 percent from last year. Winter wheat yield, at 54.0 bushels per acre, is up 2.0 bushels per acre from last year.

All hay production for 2019 is estimated at 2.62 million tons, up 19 percent from the 2018 total. **Alfalfa hay** production is estimated at 2.19 million tons from 510,000 acres harvested, up 343,000 tons from 2018. Average yield for the 2019 crop is 4.30 tons per acre, 0.60 ton per acre above last year. **All other hay** production totaled 425,000 tons from 170,000 acres harvested, up 80,000 tons from 2018. The average yield of 2.50 tons per acre is a record high and up 0.20 ton per acre from last year. New **seedings of alfalfa and alfalfa mixtures** in Utah are estimated at 65,000 acres, up 30 percent from 2018.

As of December 1, producers in Utah were storing 1.30 million tons of **all hay**, up 33 percent from the 980,000 tons stored last year.

Production of **safflower** in 2019 is 13.34 million pounds, compared with 10.92 million pounds in 2018. Planted acres are 13,000, down 2,000 acres from last year. Harvested acres are 12,700, compared with 13,000 acres in 2018. Safflower yields averaged a record high 1,050 pounds per acre in 2019, up 210 pounds per acre from last year.

Winter wheat seedings last fall for the 2020 crop year are estimated at 120,000 acres, down 4 percent from 2019.

Usual Planting & Harvesting Dates

Corn for Grain	Apr 30-May 20				Oct 10-Oct 30			
Corn for Silage	May 5-May 25				Sep 20-Oct 5			
Grains, Small								
Barley, Spring		Apr 1-Apr 20			Jul 25-Aug 15			
Oats, Spring		Apr 10-May 5			Aug 15-Sep 10			
Wheat, Spring		Apr 1-Apr 20			Aug 5-Aug 25			
Wheat, Winter			Jul 25-Aug 10			Aug 25-Oct 5		
Hay, Alfalfa				Jun 1-Oct 25				
Hay, Other				Jul 10-Aug 25				
	Planting				Harvest			

Barley: Area Planted & Harvested, Yield, Production, Price, & Value – Utah: 2010-2019

Year	Area Planted	Area Harvested	Yield per Acre	Production	Price per Bushel ¹	Value of Production
	(1,000 Acres)	(1,000 Acres)	(Bushels)	(1,000 Bushels)	(Dollars)	(1,000 Dollars)
2010.....	39	27	89.0	2,403	3.43	8,242
2011.....	35	22	81.0	1,782	5.53	9,854
2012.....	44	26	78.0	2,028	5.87	11,904
2013.....	40	30	78.0	2,340	4.17	9,758
2014.....	32	20	83.0	1,660	3.13	5,196
2015.....	27	16	84.0	1,344	2.97	3,992
2016.....	29	19	82.0	1,558	2.36	3,677
2017.....	25	18	75.0	1,350	3.08	4,158
2018.....	21	16	86.0	1,376	3.69	5,077
2019.....	17	10	93.0	930	3.80	3,534

¹ Marketing year average price.

Corn for Grain: Area Planted & Harvested, Yield, Production, Price, & Value – Utah: 2010-2019

Year	Area Planted	Area Harvested	Yield per Acre	Production	Price per Bushel ¹	Value of Production
	(1,000 Acres)	(1,000 Acres)	(Bushels)	(1,000 Bushels)	(Dollars)	(1,000 Dollars)
2010.....	70	23	178.0	4,094	5.75	23,541
2011.....	85	30	164.0	4,920	6.97	34,292
2012.....	92	34	167.0	5,678	7.59	43,096
2013.....	83	31	170.0	5,270	5.47	28,827
2014.....	75	28	160.0	4,480	4.13	18,502
2015.....	65	17	173.0	2,941	4.68	13,764
2016.....	80	29	175.0	5,075	3.87	19,640
2017.....	80	20	176.0	3,520	3.96	13,939
2018.....	70	22	182.0	4,004	4.31	17,257
2019.....	85	26	143.0	3,718	4.40	16,359

¹ Marketing year average price.

Corn for Silage: Area Harvested, Yield, & Production – Utah: 2010-2019

Year	Area Harvested	Yield per Acre	Production
	(Acres)	(Tons)	(Tons)
2010.....	46,000	23.0	1,058,000
2011.....	54,000	25.0	1,350,000
2012.....	56,000	22.0	1,232,000
2013.....	49,000	23.0	1,127,000
2014.....	45,000	22.0	990,000
2015.....	45,000	23.0	1,035,000
2016.....	49,000	24.0	1,176,000
2017.....	56,000	25.0	1,400,000
2018.....	45,000	23.0	1,035,000
2019.....	55,000	24.0	1,320,000

Alfalfa Hay: Area Harvested, Yield, Production, Price, & Value – Utah: 2010-2019

Year	Area Harvested	Yield per Acre	Production	Price per Ton ¹	Value of Production
	(1,000 Acres)	(Tons)	(1,000 Tons)	(Dollars)	(1,000 Dollars)
2010	540	4.00	2,160	106.00	228,960
2011	580	4.10	2,378	185.00	439,930
2012	500	4.10	2,050	190.00	389,500
2013	550	4.20	2,310	182.00	420,420
2014	520	3.90	2,028	188.00	381,264
2015	510	4.10	2,091	162.00	338,742
2016	530	4.20	2,226	127.00	282,702
2017	550	4.20	2,310	134.00	309,540
2018	500	3.70	1,850	172.00	318,200
2019	510	4.30	2,193	182.00	399,126

¹ Marketing year average price.

Other Hay: Area Harvested, Yield, Production, Price, & Value – Utah: 2010-2019

Year	Area Harvested	Yield per Acre	Production	Price per Ton ¹	Value of Production
	(1,000 Acres)	(Tons)	(1,000 Tons)	(Dollars)	(1,000 Dollars)
2010	160	2.20	352	98.00	34,496
2011	180	2.20	396	152.00	60,192
2012	160	2.10	336	152.00	51,072
2013	175	2.40	420	152.00	63,840
2014	160	2.30	368	154.00	56,672
2015	160	2.30	368	131.00	48,208
2016	160	2.20	352	104.00	36,608
2017	155	2.10	326	116.00	37,816
2018	150	2.30	345	133.00	45,885
2019	170	2.50	425	146.00	62,050

¹ Marketing year average price.

All Hay: Area Harvested, Yield, Production, Price, & Value – Utah: 2010-2019

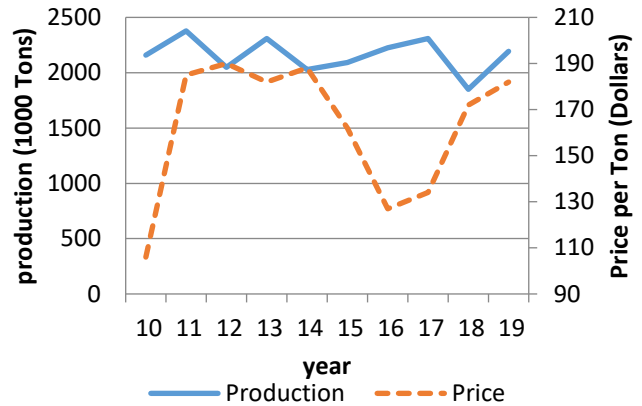
Year	Area Harvested	Yield per Acre	Production	Price per Ton ¹	Value of Production
	(1,000 Acres)	(Tons)	(1,000 Tons)	(Dollars)	(1,000 Dollars)
2010	700	3.59	2,512	106.00	263,456
2011	760	3.65	2,774	185.00	500,122
2012	660	3.62	2,386	189.00	440,572
2013	725	3.77	2,730	182.00	484,260
2014	680	3.52	2,396	188.00	437,936
2015	670	3.67	2,459	162.00	386,950
2016	690	3.74	2,578	127.00	319,310
2017	705	3.74	2,636	134.00	347,356
2018	650	3.38	2,195	171.00	364,085
2019	680	3.85	2,618	182.00	461,176

¹ Marketing year average price.

**Hay Stocks: Position & Month –
Utah: 2010-2019**

Year	On Farms May 1	On Farms December 1
	(Tons)	(Tons)
2010.....	245,000	1,050,000
2011.....	144,000	1,420,000
2012.....	350,000	900,000
2013.....	230,000	1,250,000
2014.....	300,000	1,190,000
2015.....	430,000	1,150,000
2016.....	410,000	1,200,000
2017.....	300,000	1,170,000
2018.....	200,000	980,000
2019.....	280,000	1,300,000

**Alfalfa Hay Production & Price — Utah:
2010-2019**



Safflower: Area Planted & Harvested, Yield, Production, Price, & Value – Utah: 2010-2019

Year	Area Planted	Area Harvested	Yield per Acre	Production	Price per Cwt ¹	Value of Production
	(Acres)	(Acres)	(Pounds)	(1,000 Pounds)	(Dollars)	(1,000 Dollars)
2010.....	32,000	31,000	740	22,940	16.00	3,670
2011.....	27,000	26,000	880	22,880	24.40	5,583
2012.....	28,000	23,000	430	9,890	28.90	2,858
2013.....	27,000	26,000	570	14,820	27.30	4,046
2014.....	19,000	18,000	990	17,820	25.60	4,562
2015.....	16,000	15,500	910	14,105	20.70	2,920
2016.....	14,000	13,500	810	10,935	(D)	(D)
2017.....	17,000	16,500	900	14,850	(D)	(D)
2018.....	15,000	13,000	840	10,920	16.20	1,769
2019.....	13,000	12,700	1,050	13,335	17.10	2,280

(D) Withheld to avoid disclosing data for individual operations.

¹ Marketing year average price.

Winter Wheat: Area Planted & Harvested, Yield, Production, Price, & Value – Utah: 2010-2019

Year	Area Planted	Area Harvested	Yield per Acre	Production	Price per Bushel ¹	Value of Production
	(1,000 Acres)	(1,000 Acres)	(Bushels)	(1,000 Bushels)	(Dollars)	(1,000 Dollars)
2010.....	135	118	48.0	5,664	7.20	40,781
2011.....	130	124	50.0	6,200	7.62	47,244
2012.....	125	109	47.0	5,123	8.97	45,953
2013.....	120	110	44.0	4,840	7.71	37,316
2014.....	120	109	50.0	5,450	6.85	37,333
2015.....	125	119	48.0	5,712	4.77	27,246
2016.....	120	112	60.0	6,720	3.98	26,746
2017.....	120	108	52.0	5,616	5.00	28,080
2018.....	120	94	52.0	4,888	5.70	27,862
2019.....	125	116	54.0	6,264	4.95	31,007

¹ Marketing year average price.

Other Spring Wheat: Area Planted & Harvested, Yield, Production, Price, & Value – Utah: 2010-2019

Year	Area Planted	Area Harvested	Yield per acre	Production	Price per Bushel ¹	Value of Production
	(1,000 Acres)	(1,000 Acres)	(Bushels)	(1,000 Bushels)	(Dollars)	(1,000 Dollars)
2010.....	16	13	55.0	715	9.27	6,628
2011.....	21	20	46.0	920	10.90	10,028
2012.....	15	13	40.0	520	11.50	5,980
2013.....	18	14	46.0	644	8.66	5,577
2014.....	10	8	54.0	432	8.58	3,707
2015.....	10	9	55.0	495	7.00	3,465
2016.....	9	8	58.0	464	5.50	2,552
2017.....	14	12	52.0	624	7.00	4,368
2018.....	10	9	52.0	468	6.70	3,136
2019.....	(2)	(2)	(2)	(2)	(2)	(2)

(NA) Not available.

¹ Marketing year average price.

² Estimates discontinued in 2019

All Wheat: Area Planted & Harvested, Yield, Production, Price, & Value – Utah: 2010-2019

Year	Area Planted	Area Harvested	Yield per Acre	Production	Price per Bushel ¹	Value of Production
	(1,000 Acres)	(1,000 Acres)	(Bushels)	(1,000 Bushels)	(Dollars)	(1,000 Dollars)
2010.....	151	131	48.7	6,379	7.43	47,409
2011.....	151	144	49.4	7,120	8.26	57,272
2012.....	140	122	46.3	5,643	9.59	51,933
2013.....	138	124	44.2	5,484	7.94	42,893
2014.....	130	117	50.3	5,882	7.07	41,040
2015.....	135	128	48.5	6,207	5.18	30,711
2016.....	129	120	59.9	7,184	4.30	29,298
2017.....	134	120	52.0	6,240	5.20	32,448
2018.....	130	103	52.0	5,356	6.00	30,998
2019.....	125	116	54.0	6,264	4.95	31,007

¹ Marketing year average price.

Barley Stocks: Located Off Farm by Quarter – Utah: 2011-2020

Year ¹	March 1	June 1	September 1	December 1
	(Bushels)	(Bushels)	(Bushels)	(Bushels)
2011.....	117,000	84,000	461,000	344,000
2012.....	184,000	122,000	276,000	(D)
2013.....	(D)	100,000	277,000	505,000
2014.....	(D)	159,000	269,000	396,000
2015.....	293,000	94,000	400,000	363,000
2016.....	(D)	98,000	327,000	(D)
2017.....	255,000	(D)	(D)	343,000
2018.....	211,000	(D)	(D)	(D)
2019.....	(D)	(D)	(D)	(D)
2020.....	(D)	39,000	(2)	(3)

Corn Stocks: Located Off Farm by Quarter – Utah: 2011-2020

Year ¹	March 1	June 1	September 1	December 1
	(Bushels)	(Bushels)	(Bushels)	(Bushels)
2011.....	949,000	956,000	830,000	1,010,000
2012.....	786,000	(D)	975,000	930,000
2013.....	566,000	(D)	(D)	861,000
2014.....	544,000	(D)	(D)	737,000
2015.....	420,000	(D)	(D)	670,000
2016.....	(D)	(D)	(D)	694,000
2017.....	(D)	212,000	(D)	557,000
2018.....	367,000	254,000	(D)	680,000
2019.....	448,000	432,000	367,000	1,155,000
2020.....	1,637,000	291,000	(2)	(3)

Oat Stocks: Located Off Farm by Quarter – Utah: 2011-2020

Year ¹	March 1	June 1	September 1	December 1
	(Bushels)	(Bushels)	(Bushels)	(Bushels)
2011.....	43,000	23,000	134,000	(D)
2012.....	67,000	61,000	(D)	49,000
2013.....	50,000	6,000	(D)	52,000
2014.....	28,000	(D)	44,000	48,000
2015.....	37,000	22,000	(D)	(D)
2016.....	47,000	24,000	(D)	(D)
2017.....	54,000	16,000	25,000	(D)
2018.....	(D)	15,000	34,000	23,000
2019.....	42,000	13,000	21,000	(D)
2020.....	(D)	(D)	(2)	(3)

Wheat Stocks: Located Off Farm by Quarter – Utah: 2011-2020

Year ¹	March 1	June 1	September 1	December 1
	(Bushels)	(Bushels)	(Bushels)	(Bushels)
2011.....	4,779,000	1,133,000	4,699,000	4,304,000
2012.....	4,700,000	3,517,000	4,050,000	4,418,000
2013.....	4,043,000	3,719,000	4,880,000	4,577,000
2014.....	4,149,000	3,746,000	5,150,000	4,786,000
2015.....	4,518,000	4,891,000	6,420,000	5,517,000
2016.....	5,147,000	4,641,000	5,423,000	5,473,000
2017.....	4,118,000	3,843,000	6,299,000	5,723,000
2018.....	4,407,000	3,349,000	5,926,000	5,031,000
2019.....	4,304,000	3,600,000	6,462,000	5,504,000
2020.....	5,982,000	4,192,000	(2)	(3)

(D) Withheld to avoid disclosing data for individual operations.

¹ Includes stocks at mills, elevators, terminals, and processors.

² Estimates available in the September Grain Stocks Release.

³ Estimates available in the December Grain Stocks Release.

Tart Cherries: Acreage, Yield, Production, Price, & Value – Utah: 2010-2019

Year	Bearing Acreage	Yield per Acre ¹	Production		Price per Pound	Value of Utilized Production
			Total	Utilized		
	(Acres)	(Pounds)	(Million Pounds)	(Million Pounds)	(Dollars)	(1,000 Dollars)
2010	3,300	6,970	23.0	22.5	0.270	6,075
2011	3,300	10,600	35.0	34.5	0.290	10,005
2012	3,300	12,100	40.0	40.0	0.510	20,400
2013	3,300	8,120	26.8	26.8	0.476	12,761
2014	3,300	15,500	51.0	49.8	0.432	21,494
2015	3,300	12,300	40.7	40.3	0.336	13,525
2016	3,300	16,000	52.8	49.6	0.353	17,533
2017	3,300	7,880	26.0	25.0	0.304	7,600
2018	3,100	14,500	45.0	41.0	0.222	9,102
2019	3,000	18,000	54.0	42.7	0.156	6,661

¹ Yield is based on total production.

Operations: All Cattle & Calves – Utah: 2007, 2012, & 2017

All Cattle & Calves	2007	2012	2017
	(Number)	(Number)	(Number)
Operations with			
1 - 9 Head.....	2,208	3,412	3,177
10 - 19 Head.....	1,081	1,348	1,208
20 - 49 Head.....	1,521	1,604	1,578
50 - 99 Head.....	977	864	754
100 - 199 Head.....	819	600	538
200 - 499 Head.....	595	490	461
500 Head or More.....	380	307	310

Data Source: U.S. Census of Agriculture

Operations with Beef Cows – Utah: 2007, 2012, & 2017

Beef Cows	2007	2012	2017
	(Number)	(Number)	(Number)
Operations with			
1 - 9 Head.....	1,821	2,838	2,780
10 - 19 Head.....	863	1,113	1,055
20 - 49 Head.....	1,172	1,307	1,324
50 - 99 Head.....	768	639	562
100 - 199 Head.....	503	483	385
200 - 499 Head.....	359	321	279
500 Head or More.....	103	126	123

Data Source: U.S. Census of Agriculture

Operations With Milk Cows – Utah: 2007, 2012, & 2017

Milk Cows	2007	2012	2017
	(Number)	(Number)	(Number)
Operations with			
1 - 9 Head.....	174	256	218
10 - 19 Head.....	8	15	8
20 - 49 Head.....	22	31	14
50 - 99 Head.....	53	30	69
100 - 199 Head.....	92	54	53
200 - 499 Head.....	59	45	39
500 Head or More.....	42	46	44

Data Source: U.S. Census of Agriculture

Operations With Sheep & Lambs – Utah: 2007, 2012, & 2017

Sheep & Lambs	2007	2012	2017
	(Number)	(Number)	(Number)
1 - 24 Head.....	1,037	1,196	1,248
25 - 99 Head.....	354	372	428
100 - 299 Head.....	109	79	101
300 - 999 Head.....	48	29	42
1,000 Head or More.....	67	79	79

Data Source: U.S. Census of Agriculture

Operations With Hogs & Pigs – Utah 2007, 2012, & 2017

Hogs & Pigs ¹	2007	2012	2017
	(Number)	(Number)	(Number)
All Operations.....	611	669	561

¹ Livestock operations from U.S. Census of Agriculture published every 5 years. Estimates as of the end of December.

Cattle & Calves: Number by Class & Calf Crop – Utah: January 1, 2016-2020

Class	2016	2017	2018	2019	2020
	(Head)	(Head)	(Head)	(Head)	(Head)
All Cattle & Calves	840,000	820,000	790,000	810,000	820,000
Cows & Heifers, That Have Calved	420,000	430,000	435,000	440,000	455,000
Beef Cows.....	328,000	338,000	338,000	340,000	358,000
Milk Cows.....	92,000	92,000	97,000	100,000	97,000
Calves, Under 500 Pounds.....	85,000	83,000	70,000	75,000	65,000
Steers, 500 Pounds & Over	90,000	80,000	80,000	85,000	80,000
Heifers, 500 Pounds & Over					
Beef Cow Replacements	95,000	85,000	70,000	70,000	85,000
Milk Cow Replacements	50,000	55,000	50,000	50,000	50,000
Other Heifers	75,000	60,000	60,000	65,000	60,000
Bulls, 500 Pounds & Over.....	25,000	27,000	25,000	25,000	25,000
Cattle on Feed	27,000	20,000	20,000	23,000	20,000
Calf Crop.....	380,000	375,000	385,000	400,000	(1)
Unit	Value of Inventory ²				
Value per Head..... (Dollars)	1,490	1,180	1,270	1,150	1,180
Value of Inventory..... (1,000 Dollars)	1,251,600	967,600	1,003,300	931,500	967,600

¹ Data available 2021

² Value of all cattle & calves.

Cattle & Calves: Balance Sheet – Utah: 2015-2019

Inventory Additions & Removals	2015	2016	2017	2018	2019
	(Head)	(Head)	(Head)	(Head)	(Head)
Inventory Beginning of Year	780,000	840,000	820,000	790,000	810,000
Calf Crop.....	390,000	380,000	375,000	385,000	400,000
In-Shipments.....	177,000	100,000	55,000	53,000	58,000
Marketings ¹					
Cattle.....	435,500	426,500	376,000	359,500	376,000
Calves	36,000	36,000	45,500	21,500	35,500
Farm Slaughter Cattle & Calves ²	1,500	1,500	2,500	2,000	1,500
Deaths					
Cattle.....	13,000	13,000	13,000	13,000	12,000
Calves	21,000	23,000	23,000	22,000	23,000
Inventory End of Year	840,000	820,000	790,000	810,000	820,000

¹ Includes custom slaughter for use on farms where produced & State out-shipments, but excludes inter-farm sales within the State.

² Excludes custom slaughter at commercial establishments.

Cattle & Calves: Production, Marketings, & Income – Utah: 2015-2019

Unit	2015	2016	2017	2018	2019
Production ¹ (1,000 Lbs)	319,495	320,640	369,361	382,273	403,998
Marketings ² (1,000 Lbs)	441,500	432,350	438,496	413,048	440,920
Value of Production (1,000 Dollars)	454,189	359,301	415,829	410,511	446,167
Value of Sales ³ (1,000 Dollars)	628,075	492,592	499,351	449,991	492,502
Value of Home Consumption..... (1,000 Dollars)	9,066	7,376	8,090	6,914	6,405
Gross Income..... (1,000 Dollars)	637,141	499,968	507,441	456,905	498,907

¹ Includes custom slaughter for use on farms where produced & state out-shipments, but excludes inter-farm sales within the state.

² Excludes custom slaughter at commercial establishments. Production & marketings are live weight in pounds.

³ Excludes inter-farm in-state sales.

Dairy: Milk Production & Milkfat – Utah: 2015-2019

Unit	2015	2016	2017	2018	2019
Number of Milk Cows on Farms ¹ (1,000 Hd)	96,000	91,000	96,000	100,000	98,000
Production of Milk & Milkfat ²					
Milk per Cow					
Milk(Pounds)	23,125	22,989	23,073	23,220	23,082
Milkfat(Pounds)	863	874	877	899	907
Total					
Percentage Milkfat..... (Percent)	3.73	3.80	3.80	3.87	3.93
Milk (Million Pounds)	2,220	2,092	2,215	2,322	2,262
Milkfat (Million Pounds)	82.8	79.5	84.2	89.9	88.9
Milk Price (Dollars/100 Pounds)	17.00	16.20	17.70	16.10	18.50
Value of Production ³ (1,000 Dollars)	377,400	338,904	392,055	373,842	418,470

¹ Average number of cows on farms during year, excluding heifers not yet freshened.

² Excludes milk sucked by calves.

³ Includes value of milk fed to calves.

Milk & Cream: Marketings, Used on Farm, Income, & Value – Utah: 2015-2019

Unit	2015	2016	2017	2018	2019
Combined Marketings of Milk & Cream					
Milk Sold ¹ (Million Pounds)	2,207	2,078	2,202	2,308	2,248
Average Price					
Per 100 Pounds of Milk ²(Dollars)	17.00	16.20	17.70	16.10	18.50
Per Pound of Milkfat(Dollars)	4.56	4.26	4.66	4.16	4.71
Value of Milk Marketings (1,000 Dollars)	375,190	336,636	389,754	371,588	415,880
Used for Milk, Cream, & Butter by Producers					
Milk Utilized (Million Pounds)	1.00	1.00	1.00	1.00	1.00
Value.....(Dollars)	170,000	162,000	177,000	161,000	185,000
Milk Used on Farm for Feed(Million Pounds)	12.00	13.00	12.00	13.00	13.00
Gross Producer Income ³ (1,000 Dollars)	375,360	336,798	389,931	371,749	416,065
Value of Milk Produced ⁴ (1,000 Dollars)	377,400	338,904	392,055	373,842	418,470

¹ Milk sold to plants & dealers as whole milk & equivalent amounts of milk for cream. Includes milk produced by dealers' own herds & small amounts sold directly to consumers. Includes milk produced by institutional herds.

² Average price for marketing year.

³ Cash receipts from marketings of milk & cream, plus value of milk used for home consumption.

⁴ Includes value of milk fed to calves.

Manufactured Dairy Products – Utah: 2015-2019

Unit	2015	2016	2017	2018	2019
Ice Cream, Regular, Hard.....(1,000 Gallons)	(D)	27,736	26,283	29,667	21,931
Ice Cream, Mix, Lowfat.....(1,000 Gallons)	1,445	1,349	1,359	1,161	1,571

(D) Withheld to avoid disclosing data for individual operations.

Milk Cows: Production by Month – Utah: 2017-2019

Year & Month	Milk Cows ¹	Milk per Cow ²	Milk Production ²	Year & Month	Milk Cows ¹	Milk per Cow ²	Milk Production ²
	(1,000 Head)	(Pounds)	(Million Pounds)		(1,000 Head)	(Pounds)	(Million Pounds)
2017							
January	92	1,905	175	August.....	101	2,000	202
February.....	92	1,730	159	September .	100	1,920	192
March	94	1,950	183	October	100	1,935	194
April.....	94	1,940	182	November ..	100	1,870	187
May	96	2,020	194	December ..	100	1,920	192
June	96	1,980	190				
July.....	97	2,015	195	Annual Total...	100	23,220	2,322
August.....	97	2,010	195	2019			
September ..	97	1,910	185	January	100	1,935	194
October	97	1,930	187	February	99	1,755	174
November ...	97	1,880	182	March.....	98	1,940	190
December ...	97	1,935	188	April.....	98	1,930	189
Annual Total	96	23,073	2,215	May	98	2,010	197
2018				June	97	1,960	190
January	98	1,930	189	July	97	2,010	195
February.....	99	1,755	174	August.....	96	1,995	192
March	99	1,955	194	September .	97	1,925	187
April.....	99	1,945	193	October	97	1,945	189
May	101	2,015	204	November ..	97	1,860	180
June	101	1,975	199	December ..	97	1,910	185
July.....	101	2,000	202	Annual Total...	98	23,082	2,262

¹ Includes dry cows; excludes heifers not yet fresh.

² Excludes milk sucked by calves.

Commercial Cattle Slaughter – Utah: Monthly 2018 & 2019

Month	Number Slaughtered		Total Live Weight		Average Live Weight	
	2018	2019	2018	2019	2018	2019
	(Head)	(Head)	(1,000 Pounds)	(1,000 Pounds)	(Pounds)	(Pounds)
January	57,400	60,700	78,558	83,975	1,372	1,387
February.....	46,200	51,900	63,454	69,977	1,376	1,350
March.....	51,000	55,000	69,049	73,014	1,357	1,330
April.....	50,400	57,900	66,590	76,204	1,322	1,318
May	56,500	62,300	73,724	81,105	1,308	1,304
June	56,500	58,400	74,223	76,276	1,316	1,308
July.....	58,200	62,200	77,196	83,677	1,328	1,347
August.....	63,300	60,800	84,098	82,768	1,330	1,362
September	55,900	55,800	77,475	76,929	1,387	1,381
October	62,800	61,800	84,465	83,690	1,347	1,355
November	58,100	57,100	79,312	77,076	1,368	1,352
December	51,800	55,000	70,189	73,924	1,357	1,345
Annual Total ¹	668,000	699,000	898,334	938,615	1,347	1,345

¹ Totals may not add due to rounding.

Hogs & Pigs: Total Breeding & Market Inventory, Farrowings, Pigs per Litter, Pig Crop, & Marketings – Utah: December 1, 2010-2019

[Farrowings, Pigs per Litter, Pig Crop, & Marketings for the Year, December 1, previous year, through November 30.]

Year	Inventory Dec 1			Sows Farrowing	Pigs per Litter	Pig Crop	Marketings ¹
	Total	Breeding	Market				
	(1,000 Head)	(1,000 Head)	(1,000 Head)	(Head)	(Head)	(1,000 Head)	(1,000 Head)
2010.....	740	80	660	164,000	10.04	1,647	1,549.0
2011.....	760	80	680	163,000	10.17	1,658	1,549.0
2012.....	740	80	660	163,000	10.18	1,660	1,593.0
2013.....	700	75	625	167,000	10.07	1,682	1,616.5
2014.....	600	75	525	162,000	9.44	1,529	1,478.5
2015.....	680	75	605	158,000	9.44	1,491	1,229.5
2016.....	700	75	625	157,000	9.15	1,437	1,203.5
2017.....	550	80	470	149,000	8.92	1,329	1,366.5
2018.....	710	80	630	146,000	9.14	1,334	1,148.5
2019.....	960	80	880	168,000	10.62	1,784	1,413.8

¹ Includes custom slaughter for use on farms where produced and state outshipments, but excludes interfarm sales within the state.

Hogs & Pigs: Balance Sheet – Utah: 2015-2019

Inventory Additions & Removals	2015	2016	2017	2018	2019
	(Head)	(Head)	(Head)	(Head)	(Head)
Inventory Beginning of Year ¹	600,000	680,000	700,000	550,000	710,000
Annual Pig Crop ²	1,491,000	1,437,000	1,329,000	1,334,000	1,784,000
Inshipments	3,000	1,000	83,000	103,000	73,300
Marketings ³	1,229,500	1,203,500	1,366,500	1,148,500	1,413,800
Farm Slaughter ⁴	500	500	500	500	500
Deaths	184,000	214,000	195,000	128,000	193,000
Inventory End of Year ⁵	680,000	700,000	550,000	710,000	960,000

¹ Hogs & pigs inventory is as of December 1, previous year.

² From November 30, previous year to December 1.

³ Includes custom slaughter for use on farm where produced, state out-shipments, but excludes inter-farm sales within the state.

⁴ Excludes custom slaughter for farmers at commercial establishments.

⁵ Hogs & pigs inventory is as of December 1.

Market Hogs & Pigs: Inventory by Weight Group – Utah: December 1, 2010-2019

Year	Under 50 Pounds	50-119 Pounds	120-179 Pounds	180 Pounds & over	Total Market Hogs
	(1,000 Head)	(1,000 Head)	(1,000 Head)	(1,000 Head)	(1,000 Head)
2010.....	260	135	130	135	660
2011.....	280	130	130	140	680
2012.....	275	130	125	130	660
2013.....	265	115	120	125	625
2014.....	220	100	110	95	525
2015.....	245	115	125	120	605
2016.....	250	120	130	125	625
2017.....	185	85	100	100	470
2018.....	240	125	135	130	630
2019.....	320	185	185	190	880

Hogs & Pigs: Production, Marketings, & Income – Utah: 2010-2019

[Dollar values based on data received from U. S. Department of Agriculture's Agricultural Marketing Service]

Year	Production ¹	Marketings ²	Value of Production ³	Cash Receipts ^{3, 4}	Value of Home Consumption	Gross Income
	(1,000 Pounds)	(1,000 Pounds)	(1,000 Dollars)	(1,000 Dollars)	(1,000 Dollars)	(1,000 Dollars)
2010	303,829	301,380	184,623	183,232	291	183,523
2011	302,804	301,380	209,304	208,266	332	208,598
2012	283,570	286,488	192,252	194,200	245	194,445
2013	287,097	292,010	210,555	213,969	167	214,136
2014	267,167	278,105	231,100	240,119	198	240,317
2015	249,888	240,153	158,757	152,911	145	153,056
2016	238,658	236,125	141,762	140,343	134	140,477
2017	255,582	273,260	159,045	172,432	144	172,576
2018	213,576	200,580	128,244	123,783	136	123,919
2019	292,364	266,826	179,546	166,217	142	166,359

¹ Adjustments made for changes in inventory and for inshipments.

² Excludes custom slaughter for use on farms where produced and interfarm sales within the State.

³ Includes allowance for higher average price of State inshipments and outshipments of feeder pigs.

⁴ Receipts from marketings and sale of farm slaughter.

Commercial Hog Slaughter – Utah: Monthly 2018 & 2019

Month	Number Slaughtered		Total Live Weight		Average Live Weight	
	2018	2019	2018	2019	2018	2019
	(Head)	(Head)	(Pounds)	(Pounds)	(Pounds)	(Pounds)
January	5,500	6,500	973,000	1,018,000	177	157
February	4,100	4,600	728,000	862,000	178	189
March	4,400	4,500	764,000	875,000	174	197
April	4,500	4,500	900,000	824,000	203	187
May	5,400	4,700	999,000	751,000	187	161
June	4,800	4,500	912,000	615,000	190	138
July	4,200	4,800	752,000	547,000	181	114
August	5,800	5,300	969,000	766,000	168	144
September	4,400	5,000	761,000	643,000	174	129
October	5,500	5,000	909,000	656,000	165	133
November	4,600	4,600	780,000	565,000	171	124
December	5,100	5,500	839,000	600,000	165	109
Annual Total	58,400	59,500	10,286,000	8,724,000	177	147

Sheep & Lambs: Inventory by Class & Lamb Crop – Utah: January 1, 2016-2020

Class	2016	2017	2018	2019	2020	
	(Head)	(Head)	(Head)	(Head)	(Head)	
All Sheep & Lambs ¹	285,000	275,000	275,000	290,000	285,000	
Sheep & Lambs Kept for Breeding						
All Breeding Sheep & Lambs	265,000	255,000	250,000	260,000	240,000	
Ewes	215,000	205,000	200,000	210,000	195,000	
Rams	8,000	8,000	8,000	9,000	7,000	
Replacement Lambs	42,000	42,000	42,000	41,000	38,000	
Market Sheep & Lambs						
Total Market Sheep & Lambs	20,000	20,000	25,000	30,000	45,000	
Market Sheep	1,000	1,000	4,000	2,000	4,000	
Market Lambs	19,000	19,000	21,000	28,000	41,000	
Market Lambs by Size Group						
Under 65 Pounds	2,000	3,000	3,000	2,000	1,000	
65 - 84 Pounds	3,000	3,000	4,000	2,000	2,000	
85 - 105 Pounds	7,000	5,000	5,000	11,000	14,000	
Over 105 Pounds	7,000	8,000	9,000	13,000	24,000	
Deaths						
Sheep	11,000	9,000	10,000	8,000	(2)	
Lambs	15,000	16,000	21,000	15,000	(2)	
Units	Lamb Crop & Value of Inventory					
Lamb Crop ³	(Head)	230,000	230,000	235,000	230,000	(2)
Lambing Rate ⁴	(Lambs/100 Ewes)	107	112	118	110	(2)
Value per Head ⁵	(Dollars)	223	221	218	217	212

¹ All sheep includes new crop lambs. New crop lambs are lambs born after September 30, the previous year.

² Data available 2021

³ Total for the year. Lamb crop defined as lambs marked, docked or branded.

⁴ Not strictly a lambing rate. Represents lamb crop expressed as a percent of ewes 1 year old & older on hand at the beginning of the year.

⁵ Average value of all sheep, including lambs, at the beginning of the year.

Wool: Production & Value – Utah: 2015-2019

Units	2015	2016	2017	2018	2019	
Sheep & Lambs Shorn ¹	(Head)	255,000	245,000	245,000	245,000	240,000
Weight per Fleece	(Pounds)	9.3	9.2	9.0	9.1	8.9
Shorn Wool Production	(1,000 Pounds)	2,370	2,250	2,200	2,220	2,140
Average Price per Pound	(Dollars)	1.70	1.80	1.80	2.00	2.10
Value	(1,000 Dollars)	4,029	4,050	3,960	4,440	4,494

¹ Includes shearing at commercial feeding yards.

Sheep & Lamb: Lamb Crop, Farm Slaughter, & Death Loss – Utah: 2011-2020

Year	Ewes 1 Year & Older January 1	Lambs per 100 Ewes January 1	Lamb Crop ¹	Farm Slaughter ²	Deaths	
					Sheep	Lambs
	(Head)	(Number)	(Head)	(Head)	(Head)	(Head)
2011.....	210,000	112	235,000	6,000	12,000	15,000
2012.....	230,000	102	235,000	6,000	13,000	18,000
2013.....	225,000	100	225,000	6,100	13,000	18,000
2014.....	215,000	109	235,000	6,100	11,000	16,000
2015.....	220,000	105	230,000	6,200	10,000	15,000
2016.....	215,000	107	230,000	6,100	11,000	15,000
2017.....	205,000	112	230,000	6,100	9,000	16,000
2018.....	200,000	118	235,000	5,600	10,000	21,000
2019.....	210,000	110	230,000	5,500	8,000	15,000
2020.....	195,000	(3)	(3)	(3)	(3)	(3)

¹ Lamb crop is defined as lambs born in the eastern states & lambs docked or branded in the western states.

² Excludes custom slaughter for farmers at commercial establishments.

³ Data not available till January, 2021.

Losses of Lambs Before Docking, By Cause: Utah, 2014-2019

Cause of Loss	2014	2015	2016	2017	2018	2019
Number of Head	Head					
Bear	100	100	100	200	200	800
Bobcat	200	200	300	400	500	100
Coyote	5,200	5,000	5,500	5,700	6,900	5,400
Dog	100	100	200	200	500	100
Mountain Lion	500	500	500	700	800	1,100
Foxes	400	400	500	400	500	100
Wolves	(D)	(D)	(D)	(D)	(D)	(D)
Eagles	700	700	700	500	600	400
Ravens	300	200	300	400	400	200
Other/Unknown ¹	100	100	200	100	200	400
Total Predators	7,600	7,300	8,300	8,600	10,600	8,600
Diseases	1,100	1,100	900	(D)	(D)	(D)
Enterotoxaemia	200	200	300	100	100	100
Weather Conditions	2,700	2,500	2,600	3,000	3,800	2,800
Lambing Complications	1,900	1,800	2,400	2,200	3,000	2,200
Old Age	NA	NA	NA	NA	NA	NA
On Back	(D)	(D)	(D)	(D)	(D)	(D)
Poison	100	100	100	(D)	(D)	(D)
Theft	(D)	(D)	(D)	100	100	(D)
Other/Unknown ¹	2,900	3,000	2,400	2,000	2,400	3,300
Total Non-Predators	8,900	8,700	8,700	7,400	9,400	8,400
Total Losses	16,500	16,000	17,000	16,000	20,000	17,000

Foot notes at bottom of page.

Losses of Lambs After Docking, by Cause: Utah, 2014-2019

Cause of Loss	2014	2015	2016	2017	2018	2019
Number of Head	Head					
Bear	1,700	1,700	1,300	1,600	2,000	1,800
Bobcat	200	200	300	400	400	300
Coyote	8,500	7,800	7,000	7,700	10,100	6,700
Dog	200	200	300	200	500	300
Mountain Lion	900	800	2,400	2,800	3,500	2,000
Foxes	200	200	200	500	600	200
Wolves	(D)	(D)	100	200	200	(D)
Eagles	100	100	100	100	100	100
Ravens	(D)	(D)	(D)	(D)	(D)	100
Other/Unknown ¹	300	100	200	100	200	300
Total Predators	12,100	11,100	11,900	13,600	17,600	11,800
Diseases	100	100	300	(D)	100	(D)
Enterotoxaemia	200	200	500	100	100	300
Weather Conditions	400	400	400	900	1,200	1,200
Lambing Complications	NA	NA	NA	NA	NA	NA
Old Age	NA	NA	NA	NA	NA	NA
On Back	(D)	(D)	(D)	(D)	(D)	(D)
Poison	300	300	300	400	500	300
Theft	100	100	(D)	100	200	(D)
Other/Unknown ¹	2,800	2,800	1,600	900	1,300	1,400
Total Non-Predators	3,900	3,900	3,100	2,400	3,400	3,200
Total Losses	16,000	15,000	15,000	16,000	21,000	15,000

(D) indicates Un-published: i.e. less than 100 head.

¹ Other/Unknown includes Other and Unknown causes combined with Un-published causes.

Totals may not add due to rounding.

Losses of Sheep and Lambs Combined, by Cause: Utah, 2014-2019 ¹

Cause of Loss	2014	2015	2016	2017	2018	2019
Number of Head	Head					
Bear	2,900	2,800	2,500	2,700	3,000	3,600
Bobcat	500	500	600	800	900	400
Coyote	16,500	15,200	14,900	16,300	20,300	14,200
Dog	500	500	800	600	1,500	500
Mountain Lion	2,100	2,000	4,000	4,300	5,000	4,100
Foxes	700	600	700	900	1,100	300
Wolves	(D)	(D)	100	300	200	(D)
Eagles	800	800	800	600	700	500
Ravens	300	200	300	400	400	300
Other/Unknown ²	600	400	500	400	600	700
Total Predators	24,900	23,000	25,200	27,300	33,700	24,600
Diseases	1,500	1,500	1,700	100	200	300
Enterotoxaemia	500	500	1,100	200	300	500
Weather Conditions	3,300	3,100	3,400	4,400	5,600	4,200
Lambing Complications	2,800	2,600	3,300	2,900	3,800	2,900
Old Age	1,500	1,400	1,600	1,200	1,400	900
On Back	100	100	100	300	300	200
Poison	1,300	1,200	1,400	1,100	1,200	1,000
Theft	100	100	100	200	400	(D)
Other/Unknown ²	7,500	7,500	5,100	3,300	4,100	5,400
Total Non-Predators	18,600	18,000	17,800	13,700	17,300	15,400
Total Losses	43,500	41,000	43,000	41,000	51,000	40,000
Percent of Total by Cause	Percent					
Bear	6.7	6.8	5.8	6.6	5.9	9.0
Bobcat	1.1	1.2	1.4	2.0	1.8	1.0
Coyote	37.9	37.1	34.7	39.8	39.8	35.5
Dog	1.1	1.2	1.9	1.5	2.9	1.3
Mountain Lion	4.8	4.9	9.3	10.5	9.8	10.3
Foxes	1.6	1.5	1.6	2.2	2.2	0.8
Wolves	(D)	(D)	0.2	0.7	0.4	(D)
Eagles	1.8	2.0	1.9	1.5	1.4	1.3
Ravens	0.7	0.5	0.7	1.0	0.8	0.8
Other/Unknown ²	1.4	1.0	1.2	1.0	1.2	1.8
Total Predators	57.2	56.1	58.6	66.6	66.1	61.5
Diseases	3.4	3.7	4.0	0.2	0.4	0.8
Enterotoxaemia	1.1	1.2	2.6	0.5	0.6	1.3
Weather Conditions	7.6	7.6	7.9	10.7	11.0	10.5
Lambing Complications	6.4	6.3	7.7	7.1	7.5	7.3
Old Age	3.4	3.4	3.7	2.9	2.7	2.3
On Back	0.2	0.2	0.2	0.7	0.6	0.5
Poison	3.0	2.9	3.3	2.7	2.4	2.5
Theft	0.2	0.2	0.2	0.5	0.8	(D)
Other/Unknown ²	17.2	18.3	11.9	8.0	8.0	13.5
Total Non-Predators	42.8	43.9	41.4	33.4	33.9	38.5
Total Losses	100.0	100.0	100.0	100.0	100.0	100.0
Total Loss as a Percent of Supply ³	8.2	7.6	8.1	7.9	9.6	7.4
Dollar Value of Losses by Cause	1,000 dollars					
Bear	538	547	461	475	532	642
Bobcat	91	94	98	126	146	66
Coyote	2,988	2,838	2,541	2,727	3,480	2,443
Dog	93	99	145	106	271	87
Mountain Lion	388	390	705	721	851	724
Foxes	126	108	114	142	179	50
Wolves	(D)	(D)	16	53	33	(D)
Eagles	142	144	130	95	114	83
Ravens	53	36	49	63	65	50
Other/Unknown ²	111	81	86	74	109	116
Total Predators	4,529	4,336	4,346	4,581	5,779	4,259
Diseases	273	283	301	21	38	64
Enterotoxaemia	91	94	194	32	54	87
Weather Conditions	590	567	573	721	943	703
Lambing Complications	516	502	581	495	662	512
Old Age	298	312	340	255	305	191
On Back	20	22	21	64	65	43
Poison	250	250	278	212	234	198
Theft	18	18	21	32	71	(D)
Other/Unknown ²	1,369	1,422	884	542	688	924
Total Non-Predators	3,424	3,470	3,193	2,373	3,059	2,722
Total Losses	7,953	7,805	7,538	6,953	8,838	6,980

(D) indicates Un-published: i.e. less than 100 head.

¹ Lamb losses include both before and after docking losses.

² Other/Unknown includes Other and Unknown causes combined with Un-published causes.

³ Supply equals beginning January ¹st inventory plus lamb crop plus before docking death loss.

Totals may not add due to rounding.

Losses of Sheep, by Cause: Utah, 2014-2019

Cause of Loss	2014	2015	2016	2017	2018	2019
Number of Head	Head					
Bear	1,100	1,000	1,100	900	800	1,000
Bobcat	100	100	(D)	(D)	(D)	(D)
Coyote	2,800	2,400	2,400	2,900	3,300	2,100
Dog	200	200	300	200	500	100
Mountain Lion	700	700	1,100	800	700	1,000
Foxes	100	(D)	(D)	(D)	(D)	(D)
Wolves	(D)	(D)	(D)	100	(D)	(D)
Eagles	(D)	(D)	(D)	(D)	(D)	(D)
Ravens	(D)	(D)	(D)	(D)	(D)	(D)
Other/Unknown ¹	200	200	100	200	200	(D)
Total Predators	5,200	4,600	5,000	5,100	5,500	4,200
Diseases	300	300	500	100	100	300
Enterotoxaemia	100	100	300	(D)	100	100
Weather Conditions	200	200	400	500	600	200
Lambing Complications	900	800	900	700	800	700
Old Age	1,500	1,400	1,600	1,200	1,400	900
On Back	100	100	100	300	300	200
Poison	900	800	1,000	700	700	700
Theft	(D)	(D)	100	(D)	100	(D)
Other/Unknown ¹	1,800	1,700	1,100	400	400	700
Total Non-Predators	5,800	5,400	6,000	3,900	4,500	3,800
Total Losses	11,000	10,000	11,000	9,000	10,000	8,000
Percent of Total by Cause	Percent					
Bear	10.0	10.0	10.0	10.0	8.0	12.5
Bobcat	0.9	1.0	(D)	(D)	(D)	(D)
Coyote	25.5	24.0	21.8	32.2	33.0	26.3
Dog	1.8	2.0	2.7	2.2	5.0	1.3
Mountain Lion	6.4	7.0	10.0	8.9	7.0	12.5
Foxes	0.9	(D)	(D)	(D)	(D)	(D)
Wolves	(D)	(D)	(D)	1.1	(D)	(D)
Eagles	(D)	(D)	(D)	(D)	(D)	(D)
Ravens	(D)	(D)	(D)	(D)	(D)	(D)
Other/Unknown ¹	1.8	2.0	0.9	2.2	2.0	(D)
Total Predators	47.3	46.0	45.5	56.7	55.0	52.5
Diseases	2.7	3.0	4.5	1.1	1.0	3.8
Enterotoxaemia	0.9	1.0	2.7	(D)	1.0	1.3
Weather Conditions	1.8	2.0	3.6	5.6	6.0	2.5
Lambing Complications	8.2	8.0	8.2	7.8	8.0	8.8
Old Age	13.6	14.0	14.5	13.3	14.0	11.3
On Back	0.9	1.0	0.9	3.3	3.0	2.5
Poison	8.2	8.0	9.1	7.8	7.0	8.8
Theft	(D)	(D)	0.9	(D)	1.0	(D)
Other/Unknown ¹	16.4	17.0	10.0	4.4	4.0	8.8
Total Non-Predators	52.7	54.0	54.5	43.3	45.0	47.5
Total Losses	100.0	100.0	100.0	100.0	100.0	100.0
Dollar Value of Losses by Cause	1,000 dollars					
Bear	218	223	234	191	174	213
Bobcat	20	22	(D)	(D)	(D)	(D)
Coyote	556	534	510	616	718	446
Dog	40	45	64	43	109	21
Mountain Lion	139	156	234	170	152	213
Foxes	20	(D)	(D)	(D)	(D)	(D)
Wolves	(D)	(D)	(D)	21	(D)	(D)
Eagles	(D)	(D)	(D)	(D)	(D)	(D)
Ravens	(D)	(D)	(D)	(D)	(D)	(D)
Other/Unknown ¹	40	45	21	43	44	(D)
Total Predators	1,032	1,024	1,063	1,084	1,196	893
Diseases	60	67	106	21	22	64
Enterotoxaemia	20	22	64	(D)	22	21
Weather Conditions	40	45	85	106	131	43
Lambing Complications	179	178	191	149	174	149
Old Age	298	312	340	255	305	191
On Back	20	22	21	64	65	43
Poison	179	178	213	149	152	149
Theft	(D)	(D)	21	(D)	22	(D)
Other/Unknown ¹	357	378	234	85	87	149
Total Non-Predators	1,152	1,202	1,275	829	979	808
Total Losses	2,184	2,225	2,338	1,913	2,175	1,700

(D) indicates Un-published: i.e. less than 100 head.

¹ Other/Unknown includes Other and Unknown causes combined with Un-published causes.

Totals may not add due to rounding.

Losses of All Lambs, by Cause: Utah, 2014-2019 ¹

Cause of Loss	2014	2015	2016	2017	2018	2019
Number of Head	Head					
Bear	1,800	1,800	1,400	1,800	2,200	2,600
Bobcat	400	400	600	800	900	400
Coyote	13,700	12,800	12,500	13,400	17,000	12,100
Dog	300	300	500	400	1,000	400
Mountain Lion	1,400	1,300	2,900	3,500	4,300	3,100
Foxes	600	600	700	900	1,100	300
Wolves	(D)	(D)	100	200	200	(D)
Eagles	800	800	800	600	700	500
Ravens	300	200	300	400	400	300
Other/Unknown ²	400	200	400	200	400	700
Total Predators	19,700	18,400	20,200	22,200	28,200	20,400
Diseases	1,200	1,200	1,200	(D)	100	(D)
Enterotoxaemia	400	400	800	200	200	400
Weather Conditions	3,100	2,900	3,000	3,900	5,000	4,000
Lambing Complications	1,900	1,800	2,400	2,200	3,000	2,200
Old Age	NA	NA	NA	NA	NA	NA
On Back	(D)	(D)	(D)	(D)	(D)	(D)
Poison	400	400	400	400	500	300
Theft	100	100	(D)	200	300	(D)
Other/Unknown ²	5,700	5,800	4,000	2,900	3,700	4,700
Total Non-Predators	12,800	12,600	11,800	9,800	12,800	11,600
Total Losses	32,500	31,000	32,000	32,000	41,000	32,000
Percent of Total by Cause	Percent					
Bear	5.5	5.8	4.4	5.6	5.4	8.1
Bobcat	1.2	1.3	1.9	2.5	2.2	1.3
Coyote	42.2	41.3	39.1	41.9	41.5	37.8
Dog	0.9	1.0	1.6	1.3	2.4	1.3
Mountain Lion	4.3	4.2	9.1	10.9	10.5	9.7
Foxes	1.8	1.9	2.2	2.8	2.7	0.9
Wolves	(D)	(D)	0.3	0.6	0.5	(D)
Eagles	2.5	2.6	2.5	1.9	1.7	1.6
Ravens	0.9	0.6	0.9	1.3	1.0	0.9
Other/Unknown ²	1.2	0.6	1.3	0.6	1.0	2.2
Total Predators	60.6	59.4	63.1	69.4	68.8	63.8
Diseases	3.7	3.9	3.8	(D)	0.2	(D)
Enterotoxaemia	1.2	1.3	2.5	0.6	0.5	1.3
Weather Conditions	9.5	9.4	9.4	12.2	12.2	12.5
Lambing Complications	5.8	5.8	7.5	6.9	7.3	6.9
Old Age	NA	NA	NA	NA	NA	NA
On Back	(D)	(D)	(D)	(D)	(D)	(D)
Poison	1.2	1.3	1.3	1.3	1.2	0.9
Theft	0.3	0.3	(D)	0.6	0.7	(D)
Other/Unknown ²	17.5	18.7	12.5	9.1	9.0	14.7
Total Non-Predators	39.4	40.6	36.9	30.6	31.2	36.3
Total Losses	100.0	100.0	100.0	100.0	100.0	100.0
Dollar Value of Losses by Cause	1,000 dollars					
Bear	320	324	228	284	358	429
Bobcat	71	72	98	126	146	66
Coyote	2,432	2,304	2,031	2,111	2,763	1,997
Dog	53	54	81	63	163	66
Mountain Lion	249	234	471	551	699	512
Foxes	107	108	114	142	179	50
Wolves	(D)	(D)	16	32	33	(D)
Eagles	142	144	130	95	114	83
Ravens	53	36	49	63	65	50
Other/Unknown ²	71	36	65	32	65	116
Total Predators	3,497	3,312	3,283	3,497	4,583	3,366
Diseases	213	216	195	(D)	16	(D)
Enterotoxaemia	71	72	130	32	33	66
Weather Conditions	550	522	488	614	813	660
Lambing Complications	337	324	390	347	488	363
Old Age	NA	NA	NA	NA	NA	NA
On Back	(D)	(D)	(D)	(D)	(D)	(D)
Poison	71	72	65	63	81	50
Theft	18	18	(D)	32	49	(D)
Other/Unknown ²	1,012	1,044	650	457	601	776
Total Non-Predators	2,272	2,268	1,918	1,544	2,080	1,914
Total Losses	5,769	5,580	5,200	5,040	6,663	5,280

(D) indicates Un-published: i.e. less than 100 head.

¹ Lamb losses include both before and after docking losses.

² Other/Unknown includes Other and Unknown causes combined with Un-published causes.

Totals may not add due to rounding.

Layers & Eggs – Utah: 2015-2019

Unit	2015	2016	2017	2018	2019
	Inventory, Production, & Value ¹ 2015-2019				
Average Layers.....(1,000 Head)	4,409	4,571	5,153	4,793	4,711
Eggs per Layer ²(Number)	284	278	294	293	308
Total Egg Production (Million Eggs)	1,252	1,271	1,513	1,403	1,450
Value of Eggs Produced (1,000 Dollars)	199,491	73,238	102,395	163,332	116,720
Chicken Inventory ³ & Value, December 1, 2015-2019					
Total Layers(1,000 Head)	4,532	5,252	5,036	4,713	4,642
Total Pullets(1,000 Head)	1,328	1,370	1,178	1,139	1,330
Total Chickens					
Total.....(1,000 Head)	5,860	6,622	6,214	5,852	5,972
Value					
Average per Head..... (Dollars)	3.10	2.40	2.20	2.30	3.10
Total Value..... (1,000 Dollars)	18,166	15,893	13,671	13,460	18,513
Chickens: Lost, Sold, & Value of Sales ⁴ 2015-2019					
Lost ⁵(1,000 Head)	863	950	1,598	1,127	1,230
Sold for Slaughter					
Chickens Sold.....(1,000 Head)	2,484	3,003	2,648	2,272	1,764
Live Weight (1,000 Pounds)	8,047	9,940	8,924	7,815	6,068
Value of Sales..... (Dollars)	8,000	9,900	8,900	7,800	6,100

¹ Estimates cover the 12 month period, December 1, previous year, through November 30.

² Total egg production divided by average number of layers on hand.

³ Excludes commercial broilers.

⁴ Estimates exclude broilers and cover the 12 month period December 1, the previous year through November 30.

⁵ Includes rendered, died, destroyed, composted or disappeared for any reason except sold during the 12 month period.

Turkey: Production & Value – Utah: 2010-2019

Year	Production ¹	Production	Value of Production
	(1,000 Head)	(1,000 Pounds)	(1,000 Dollars)
2010.....	4,600	117,300	75,189
2011.....	4,300	105,350	71,849
2012.....	4,100	105,780	76,267
2013.....	4,000	108,800	72,352
2014.....	4,000	96,800	71,148
2015.....	3,800	95,380	77,353
2016.....	4,700	121,730	100,549
2017.....	5,200	134,160	86,667
2018.....	(D)	(D)	(D)
2019.....	(D)	(D)	(D)

(D) Withheld to avoid disclosing data for individual operations.

¹ Excludes young turkeys lost.

Mink: Pelts Produced, Females Bred, Average Price, & Value – Utah & United States: 2010-2019

Year	Utah		United States			
	Pelts Produced	Females Bred	Pelts Produced	Females Bred	Average Marketing Price	Value of Pelts
	(1,000)	(1,000)	(Pelts)	(Number)	(Dollars)	(1,000 Dollars)
2010.....	678	171	2,840,200	670,200	81.90	232,612
2011.....	699	169	3,091,470	706,000	94.30	291,526
2012.....	(1)	179	(1)	770,000	(1)	(1)
2013.....	855	(1)	3,544,610	(1)	56.30	199,562
2014.....	959	201	3,741,150	851,500	57.70	215,864
2015.....	868	214	3,682,960	848,700	32.00	117,855
2016.....	732	190	3,454,410	767,110	34.70	119,868
2017.....	743	173	3,400,080	770,400	36.10	122,743
2018.....	708	168	3,169,560	776,440	26.60	84,310
2019.....	557	158	2,704,200	695,650	21.90	59,222

¹ Due to sequestration the Mink report was suspended.

Pelts Produced in 2019 & Females Bred for 2020, by Type – Utah & United States:

Type ¹	Pelts Produced 2019		Females Bred To Produce Kits 2020	
	Utah	United States	Utah	United States
	(Pelts)	(Pelts)	(Number)	(Number)
Black.....	185,000	1,404,600	35,000	186,580
Demi/Wild.....	33,000	90,440	8,000	12,220
Pastel.....	36,000	84,340	10,500	15,060
Sapphire.....	40,000	155,130	(D)	19,220
Blue Iris.....	(D)	118,540	(D)	12,630
Mahogany.....	196,000	468,680	27,000	72,090
Pearl.....	(D)	79,000	(D)	11,810
Lavender.....	-	25,790	-	2,260
Violet.....	(D)	56,790	(D)	5,000
White.....	(D)	209,030	-	20,420
Other.....	(D)	11,860	(D)	2,560
Total.....	556,710	2,704,200	103,500	359,850

¹ Published color classes may not add to the State total to avoid disclosing individual operations.

Honey: Number of Colonies, Yield, Production, Stocks, Price, & Value – Utah: 2010-2019

[Producers with 5 or more colonies.]

Year	Honey Producing Colonies ¹	Yield per Colony	Production	Stocks December 15 ²	Average Price per Pound ³	Value of Production ⁴
	(Number)	(Pounds)	(1,000 Pounds)	(Pounds)	(Dollars)	(1,000 Dollars)
2010	26,000	30	780	195,000	1.53	1,193
2011	23,000	39	897	170,000	1.75	1,570
2012	25,000	38	950	209,000	1.87	1,777
2013	30,000	34	1,020	92,000	2.09	2,132
2014	29,000	28	812	130,000	2.13	1,730
2015	27,000	42	1,134	147,000	1.92	2,177
2016	31,000	32	992	169,000	1.93	1,915
2017	27,000	31	837	67,000	2.08	1,741
2018	26,000	41	1,066	75,000	2.10	2,239
2019	22,000	29	638	89,000	2.06	1,314

¹ Honey producing colonies are the maximum number of colonies from which honey was taken during the year. It is possible to take honey from colonies which did not survive the entire year.

² Stocks held by producers.

³ Average price per pound based on expanded sales.

⁴ Value of production is equal to production multiplied by average price per pound.

Trout: Total Value of Fish Sold & Foodsize Sales – Utah: 2010-2019

Year	Total Value of Fish Sold ¹	Foodsize (12 Inches or longer)			
		Number of Fish	Live Weight ²	Sales	
				Total ³	Average Price per Pound
	(Dollars)	(Number)	(Pounds)	(Dollars)	(Dollars)
2010	601,000	100,000	116,000	365,000	3.15
2011	516,000	75,000	87,000	307,000	3.53
2012	472,000	90,000	100,000	330,000	3.30
2013	617,000	100,000	151,000	556,000	3.68
2014	604,000	130,000	161,000	531,000	3.30
2015	630,000	90,000	113,000	444,000	3.93
2016	633,000	100,000	128,000	436,000	3.41
2017	694,000	140,000	184,000	550,000	2.99
2018	997,000	200,000	192,000	939,000	4.89
2019	1,629,000	260,000	288,000	1,336,000	4.64

¹ Total sales excluding eggs.

² Due to rounding, total number of fish multiplied by the average pounds per unit may not exactly equal total live weight.

³ Due to rounding, total number or live weight multiplied by average value per unit may not exactly equal total sales.

Marketing Year Average Prices, by Commodity – Utah: 2011-2019

Commodity	Unit	2011	2012	2013	2014	2015	2016	2017	2018	2019
Wheat, All	Bu	8.26	9.59	7.94	7.07	5.18	4.30	5.20	6.00	4.95
Wheat, Winter..	Bu	7.62	8.97	7.71	6.85	4.77	3.98	5.00	5.70	4.95
Wheat, Spring..	Bu	10.90	11.50	8.66	8.58	7.00	5.50	7.00	6.70	(NA)
Corn, Grain	Bu	6.97	7.59	5.47	4.13	4.68	3.87	3.96	4.31	4.40
Barley, All.....	Bu	5.53	5.87	4.17	3.13	2.97	2.36	3.08	3.69	3.80
Hay, All (Baled)..	Ton	185.00	189.00	182.00	188.00	162.00	127.00	134.00	171.00	182.00
Alfalfa	Ton	185.00	190.00	182.00	188.00	162.00	127.00	134.00	172.00	182.00
Other Hay	Ton	152.00	152.00	152.00	154.00	131.00	104.00	116.00	133.00	146.00
Tart Cherries.....	Lb	0.29	0.51	0.48	0.43	0.34	0.35	0.30	0.22	0.16
Milk Cows	Hd	1,290.00	1,300.00	1,290.00	1,740.00	1,930.00	1,730.00	1,700.00	1,450.00	1,140.00
Honey	Lb	1.75	1.87	2.09	2.13	1.92	1.93	2.08	2.10	2.06
Trout (12 Inch +)	Lb	3.53	3.30	3.68	3.30	3.93	3.41	2.99	4.89	4.64
Eggs ¹	Doz	0.878	0.866	0.878	1.084	1.912	0.691	0.812	1.397	0.966
Milk, All	Cwt	19.60	17.60	19.50	23.70	17.00	16.20	17.70	16.10	18.50

(NA) Not available.

¹ Egg Prices are derived from the annual production and annual value of production data from the April Poultry: Production and Value Report.

Prices Received: Monthly Averages by Selected Commodities – Utah: 2010-2019

Year	Jan	Feb	Mar	Apr	May	Jun	Jul	Aug	Sep	Oct	Nov	Dec
	Milk											
	(Dollars per Cwt)	(Dollars per Cwt)	(Dollars per Cwt)	(Dollars per Cwt)	(Dollars per Cwt)	(Dollars per Cwt)	(Dollars per Cwt)	(Dollars per Cwt)	(Dollars per Cwt)	(Dollars per Cwt)	(Dollars per Cwt)	(Dollars per Cwt)
2010.....	15.70	15.40	14.90	14.20	15.10	15.60	15.80	16.70	17.40	18.40	18.10	17.00
2011.....	16.80	18.40	20.10	19.60	19.50	20.50	20.40	21.30	20.60	19.10	19.50	19.00
2012.....	18.20	16.80	16.50	15.70	15.10	14.60	15.80	17.40	18.80	21.00	21.80	20.60
2013.....	19.90	19.10	18.60	18.80	19.20	19.10	18.20	18.50	19.50	20.50	21.20	21.50
2014.....	22.30	24.10	24.10	24.60	24.40	23.00	22.50	23.80	25.00	24.90	23.80	21.50
2015.....	17.80	16.50	16.40	16.40	16.70	16.90	16.70	16.70	17.00	17.40	18.40	17.80
2016.....	16.10	15.60	15.00	14.90	14.40	14.50	15.60	16.80	17.70	16.70	17.50	19.10
2017.....	19.00	18.40	17.90	16.50	16.50	17.10	17.00	17.60	17.80	18.30	18.40	17.60
2018.....	16.20	15.10	15.70	15.80	16.20	16.10	15.30	15.80	16.80	17.50	16.80	16.30
2019.....	16.30	16.30	17.20	17.40	17.60	17.90	18.20	18.60	19.10	20.40	21.70	21.30

Prices Received: Monthly Averages by Selected Commodities – Utah: 2010-2019 (cont)

Year	Jan	Feb	Mar	Apr	May	Jun	Jul	Aug	Sep	Oct	Nov	Dec
All Hay (Baled)												
	(Dollars per Ton)	(Dollars per Ton)	(Dollars per Ton)	(Dollars per Ton)	(Dollars per Ton)	(Dollars per Ton)	(Dollars per Ton)	(Dollars per Ton)	(Dollars per Ton)	(Dollars per Ton)	(Dollars per Ton)	(Dollars per Ton)
2010	90.00	100.00	100.00	95.00	95.00	100.00	100.00	100.00	108.00	108.00	108.00	109.00
2011	109.00	110.00	120.00	159.00	161.00	173.00	199.00	183.00	181.00	200.00	187.00	191.00
2012	189.00	175.00	173.00	189.00	205.00	198.00	199.00	187.00	187.00	187.00	182.00	192.00
2013	183.00	184.00	175.00	182.00	190.00	190.00	194.00	186.00	186.00	175.00	170.00	170.00
2014	174.00	180.00	175.00	170.00	170.00	170.00	194.00	204.00	205.00	199.00	185.00	179.00
2015	180.00	180.00	170.00	175.00	175.00	175.00	165.00	159.00	160.00	160.00	160.00	160.00
2016	160.00	160.00	145.00	145.00	120.00	130.00	130.00	129.00	130.00	130.00	130.00	125.00
2017	120.00	120.00	120.00	120.00	120.00	125.00	125.00	125.00	135.00	140.00	140.00	140.00
2018	140.00	145.00	150.00	150.00	150.00	160.00	159.00	169.00	174.00	174.00	174.00	179.00
2019	184.00	185.00	185.00	184.00	185.00	185.00	180.00	180.00	175.00	185.00	185.00	190.00
Alfalfa Hay (Baled)												
	(Dollars per Ton)	(Dollars per Ton)	(Dollars per Ton)	(Dollars per Ton)	(Dollars per Ton)	(Dollars per Ton)	(Dollars per Ton)	(Dollars per Ton)	(Dollars per Ton)	(Dollars per Ton)	(Dollars per Ton)	(Dollars per Ton)
2010	90.00	100.00	100.00	95.00	95.00	100.00	100.00	100.00	108.00	108.00	108.00	109.00
2011	109.00	110.00	120.00	160.00	161.00	173.00	200.00	184.00	181.00	200.00	187.00	192.00
2012	189.00	175.00	173.00	189.00	205.00	198.00	200.00	188.00	187.00	187.00	182.00	192.00
2013	183.00	184.00	175.00	183.00	191.00	190.00	195.00	187.00	187.00	175.00	170.00	170.00
2014	175.00	180.00	175.00	170.00	170.00	170.00	195.00	205.00	205.00	200.00	185.00	180.00
2015	180.00	180.00	170.00	175.00	175.00	175.00	165.00	160.00	160.00	160.00	160.00	160.00
2016	160.00	160.00	145.00	145.00	120.00	130.00	130.00	130.00	130.00	130.00	130.00	125.00
2017	120.00	120.00	120.00	120.00	120.00	125.00	125.00	125.00	135.00	140.00	140.00	140.00
2018	140.00	145.00	150.00	150.00	150.00	160.00	160.00	170.00	175.00	175.00	175.00	180.00
2019	185.00	185.00	185.00	185.00	185.00	185.00	180.00	180.00	175.00	185.00	185.00	190.00
All Other Hay (Baled)												
	(Dollars per Ton)	(Dollars per Ton)	(Dollars per Ton)	(Dollars per Ton)	(Dollars per Ton)	(Dollars per Ton)	(Dollars per Ton)	(Dollars per Ton)	(Dollars per Ton)	(Dollars per Ton)	(Dollars per Ton)	(Dollars per Ton)
2010	85.00	100.00	105.00	90.00	85.00	95.00	100.00	85.00	99.00	99.00	99.00	99.00
2011	99.00	100.00	106.00	132.00	133.00	141.00	157.00	148.00	159.00	163.00	150.00	154.00
2012	152.00	142.00	141.00	152.00	163.00	158.00	160.00	151.00	150.00	147.00	147.00	154.00
2013	148.00	148.00	142.00	148.00	153.00	153.00	165.00	155.00	150.00	155.00	145.00	145.00
2014	145.00	145.00	140.00	140.00	140.00	140.00	160.00	165.00	165.00	160.00	150.00	145.00
2015	145.00	145.00	135.00	140.00	140.00	140.00	135.00	130.00	130.00	130.00	130.00	130.00
2016	130.00	130.00	120.00	115.00	100.00	100.00	100.00	100.00	110.00	110.00	110.00	105.00
2017	105.00	105.00	105.00	105.00	105.00	110.00	110.00	110.00	120.00	120.00	120.00	120.00
2018	120.00	120.00	125.00	125.00	125.00	125.00	125.00	130.00	135.00	135.00	135.00	135.00
2019	140.00	140.00	150.00	150.00	150.00	150.00	145.00	145.00	145.00	145.00	145.00	150.00

Farm Labor: Number Hired, Wage Rates, & Hours Worked – Mountain II Region: July 2019, October 2019, January 2020, & April 2020 ^{1 2}

	July 2019	October 2019	January 2020	April 2020
Hired Workers				
Hired Workers.....	21,000	21,000	15,000	18,000
Expected to be Employed				
150 Days or More	16,000	16,000	14,000	16,000
149 Days or Less.....	5,000	5,000	1,000	2,000
Hours Worked (per Week)				
Hours Worked by Hired Workers.....	44.7	41.8	43.5	42.9
Wage Rates (Dollars per Hours)				
Wage Rates for all Hired Workers.....	14.52	15.02	15.86	15.16
Type of Worker				
Field.....	13.83	14.47	14.79	14.28
Livestock.....	14.24	14.27	15.48	14.95
Field & Livestock Combined.....	13.95	14.40	15.25	14.65

¹ Mountain II Region includes Colorado, Nevada, and Utah.

² Excludes Agricultural Service workers.

Grazing Fees: Annual Average Rates – Utah: 2010-2019

Year	Per Animal Unit ¹ (Dollars per Month)	Cow-Calf (Dollars per Month)	Per Head (Dollars per Month)
2010.....	13.10	17.00	15.50
2011.....	13.20	18.60	15.80
2012.....	13.70	16.70	16.00
2013.....	14.50	18.50	16.00
2014.....	15.00	19.00	16.50
2015.....	16.00	20.00	17.00
2016.....	16.50	20.00	17.00
2017.....	16.50	20.00	18.50
2018.....	17.00	19.00	18.50
2019.....	18.00	20.00	18.50

¹ Includes animal unit plus cow-calf rate converted to animal unit (AUM) using (1 aum=cow-calf * 0.833)

County Estimates: Select Items & Years - Utah

Item	Unit	State Totals	County					
			Beaver	Box Elder	Cache	Carbon	Daggett	Davis
January 1, 2020								
All Cattle & Calves	(Head)	820,000	29,000	84,000	62,000	6,800	3,900	3,700
Beef Cows.....	(Head)	358,000	13,800	38,500	10,800	(D)	2,700	2,300
Milk Cows.....	(Head)	97,000	1,700	8,600	18,100	(D)	-	(D)
Cash Receipts 2018 ¹								
Total.....	(1,000 Dollars)	1,676,175	172,900	150,442	140,195	6,946	3,162	37,871
Livestock.....	(1,000 Dollars)	1,235,526	157,457	103,409	114,327	5,139	2,571	5,464
Crops	(1,000 Dollars)	440,649	15,443	47,003	25,868	1,807	591	32,407
2017 Census of Agriculture ²								
Number of Farms ³	(Number)	18,409	272	1,187	1,397	309	52	528
Land in Farms ³	(Acres)	10,811,604	157,030	1,220,773	276,273	230,942	17,671	51,793
Harvested Cropland ⁴	(Acres)	1,062,894	37,496	154,321	116,796	8,011	5,409	6,316
Irrigated Land ⁵	(Acres)	1,097,219	40,240	103,836	90,148	9,253	7,168	9,995

See footnote(s) at end of table.

--continued

County Estimates: Select Items & Years - Utah (Continued)

Item	Unit	County						
		Duchesne	Emery	Garfield	Grand	Iron	Juab	Kane
January 1, 2020								
All Cattle & Calves	(Head)	59,000	20,500	15,800	5,700	39,500	21,000	9,000
Beef Cows.....	(Head)	29,000	13,800	10,800	3,700	12,500	(D)	(D)
Milk Cows.....	(Head)	3,200	(D)	(D)	(D)	11,200	(D)	-
Cash Receipts 2018 ¹								
Total.....	(1,000 Dollars)	65,255	13,574	11,543	4,684	118,258	29,675	5,600
Livestock.....	(1,000 Dollars)	51,739	9,749	8,785	3,078	72,384	20,598	5,005
Crops	(1,000 Dollars)	13,516	3,825	2,758	1,606	45,874	9,077	595
2017 Census of Agriculture ²								
Number of Farms ³	(Number)	1,063	504	286	102	486	292	182
Land in Farms ³	(Acres)	1,057,413	133,699	82,637	231,361	512,940	264,644	128,697
Harvested Cropland ⁴	(Acres)	59,527	21,370	13,013	9,705	65,182	27,013	3,384
Irrigated Land ⁵	(Acres)	96,513	32,848	21,194	11,498	64,380	23,731	6,896

See footnote(s) at end of table.

--continued

County Estimates: Select Items & Years - Utah (Continued)

Item	Unit	County							
		Millard	Morgan	Piute	Rich	Salt Lake	San Juan	Sanpete	Sevier
January 1, 2020									
All Cattle & Calves	(Head)	61,000	8,400	19,100	42,500	2,200	15,600	61,000	51,000
Beef Cows	(Head)	19,800	4,800	6,600	(D)	(D)	9,900	18,000	14,000
Milk Cows	(Head)	12,100	800	4,400	-	(D)	(D)	7,400	4,500
Cash Receipts 2018 ¹									
Total.....	(1,000 Dollars)	171,969	18,984	19,646	39,930	21,859	13,304	164,987	68,679
Livestock.....	(1,000 Dollars)	118,319	16,389	18,240	36,519	6,539	10,994	149,030	52,628
Crops	(1,000 Dollars)	53,650	2,595	1,406	3,411	15,320	2,310	15,957	16,051
2017 Census of Agriculture ²									
Number of Farms ³	(Number)	654	372	104	160	592	823	1,003	691
Land in Farms ³	(Acres)	481,539	242,666	54,445	374,947	61,965	1,657,212	301,691	108,992
Harvested Cropland ⁴	(Acres)	112,567	12,636	11,308	41,118	6,003	44,614	57,963	40,129
Irrigated Land ⁵	(Acres)	122,680	9,023	15,340	42,422	7,430	7,571	76,489	49,440

See footnote(s) at end of table.

--continued

County Estimates: Select Items & Years - Utah (Continued)

Item	Unit	County							
		Summit	Tooele	Uintah	Utah	Wasatch	Washington	Wayne	Weber
January 1, 2020									
All Cattle & Calves	(Head)	20,000	22,000	38,000	58,000	7,800	13,500	19,500	20,500
Beef Cows	(Head)	9,800	13,800	24,500	18,000	5,300	9,100	10,400	6,000
Milk Cows	(Head)	800	(D)	700	15,100	700	(D)	700	4,500
Cash Receipts 2018 ¹									
Total.....	(1,000 Dollars)	27,882	42,376	44,341	204,986	11,205	11,693	15,911	38,318
Livestock.....	(1,000 Dollars)	25,534	32,398	28,981	125,062	8,533	6,596	13,717	26,342
Crops	(1,000 Dollars)	2,348	9,978	15,360	79,924	2,672	5,097	2,194	11,976
2017 Census of Agriculture ²									
Number of Farms ³	(Number)	626	540	1,114	2,589	475	537	209	1,260
Land in Farms ³	(Acres)	295,588	348,934	1,824,700	303,795	97,098	155,047	42,751	94,361
Harvested Cropland ⁴	(Acres)	18,616	16,663	47,696	73,397	7,836	9,231	13,336	22,238
Irrigated Land ⁵	(Acres)	21,298	21,894	65,306	72,669	11,252	12,984	16,552	27,169

- Represents zero.

(D) Withheld to avoid disclosing data for individual operations.

¹ Source: Bureau of Economic Analysis, U.S. Department of Commerce. All dollar estimates are in current dollars (not adjusted for inflation).

² These county estimates are only published once every 5 years with the Census of Agriculture.

³ State level estimates are published annually, number of farms and land in farms for the state of Utah are for 2019

⁴ Includes land from which crops were harvested or hay was cut, and land in orchards.

⁵ Includes all land watered by any artificial or controlled means, such as sprinklers, furrows or ditches and spreader dikes.

County Estimates: Cattle – Utah: January 1, 2019 & 2020

County ¹	All Cattle		Beef Cows		Milk Cows	
	2019 (Number)	2020 (Number)	2019 (Number)	2020 (Number)	2019 (Number)	2020 (Number)
Northern						
Box Elder	83,000	84,000	36,500	38,500	8,900	8,600
Cache.....	61,000	62,000	10,200	10,800	18,600	18,100
Davis	3,700	3,700	2,200	2,300	(D)	(D)
Morgan.....	8,400	8,400	4,600	4,800	800	800
Rich.....	42,000	42,500	(D)	(D)	-	-
Salt Lake.....	2,200	2,200	(D)	(D)	(D)	(D)
Tooele.....	21,500	22,000	13,100	13,800	(D)	(D)
Weber.....	20,500	20,500	5,800	6,000	4,600	4,500
Central						
Juab.....	20,500	21,000	(D)	(D)	(D)	(D)
Millard.....	60,000	61,000	18,800	19,800	12,500	12,100
Sanpete.....	60,000	61,000	17,100	18,000	7,600	7,400
Sevier.....	50,000	51,000	13,300	14,000	4,700	4,500
Utah.....	58,000	58,000	17,100	18,000	15,600	15,100
Eastern						
Carbon.....	6,800	6,800	(D)	(D)	(D)	(D)
Daggett.....	3,900	3,900	2,600	2,700	-	-
Duchesne.....	58,000	59,000	27,500	29,000	3,200	3,200
Emery.....	20,000	20,500	13,200	13,800	(D)	(D)
Grand.....	5,700	5,700	3,500	3,700	(D)	(D)
San Juan.....	15,500	15,600	9,500	9,900	(D)	(D)
Summit.....	19,800	20,000	9,300	9,800	900	800
Uintah.....	37,500	38,000	23,000	24,500	700	700
Wasatch.....	7,800	7,800	5,000	5,300	700	700
Southern						
Beaver.....	29,000	29,000	13,100	13,800	1,800	1,700
Garfield.....	15,600	15,800	10,300	10,800	(D)	(D)
Iron.....	39,000	39,500	11,900	12,500	11,500	11,200
Kane.....	9,000	9,000	(D)	(D)	-	-
Piute.....	18,900	19,100	6,300	6,600	4,500	4,400
Washington.....	13,400	13,500	8,600	9,100	(D)	(D)
Wayne.....	19,300	19,500	9,900	10,400	800	700
Other Counties.....	-	-	47,600	50,100	2,600	2,500
State Total.....	810,000	820,000	340,000	358,000	100,000	97,000

- Represents zero.

(D) Withheld to avoid disclosing data for individual operations.

¹ Counties with missing data are included in "Other Counties".

County Estimates: Cash Rent per Acre – Utah: 2019 & 2020

District & County ^{1, 2, 3}	Rented for Cash					
	Irrigated Cropland		Non-Irrigated Cropland		Pastureland	
	2019	2020	2019	2020	2019	2020
	(Dollars/Acre)	(Dollars/Acre)	(Dollars/Acre)	(Dollars/Acre)	(Dollars/Acre)	(Dollars/Acre)
Northern						
Box Elder.....	127.00	131.00	25.00	24.50	4.30	4.70
Cache.....	103.00	97.00	41.00	38.00	16.50	9.20
Davis.....	141.00	163.00	25.00	-	-	11.00
Morgan.....	75.00	80.50	27.00	27.50	1.40	2.90
Rich.....	37.00	42.50	-	18.50	3.60	10.00
Salt Lake.....	98.00	98.00	-	-	7.00	6.80
Tooele.....	76.50	50.00	-	24.00	3.00	3.40
Weber.....	121.00	130.00	45.00	45.50	-	19.50
Other Counties.....	-	-	-	-	-	-
Total.....	111.00	109.00	27.00	28.00	4.00	5.20
Central						
Juab.....	92.00	61.00	11.00	13.50	8.00	3.20
Millard.....	160.00	134.00	14.00	31.50	4.00	7.20
Sanpete.....	103.00	118.00	21.00	-	10.00	5.60
Sevier.....	92.00	92.50	19.00	20.00	14.00	14.50
Utah.....	106.00	96.50	36.00	-	3.00	2.80
Other Counties.....	-	-	-	31.00	-	-
Total.....	122.00	112.00	17.00	27.50	5.20	4.90
Eastern						
Carbon.....	68.00	68.00	-	-	2.40	2.70
Daggett.....	-	-	-	-	-	-
Duchesne.....	74.00	61.50	22.00	25.00	14.00	9.60
Emery.....	32.00	34.50	10.50	11.50	5.00	4.50
Grand.....	-	-	-	-	-	-
San Juan.....	53.00	59.00	-	-	4.00	3.80
Summit.....	60.00	63.00	27.00	37.00	4.20	6.30
Uintah.....	69.00	72.00	25.00	-	13.50	11.00
Wasatch.....	62.50	79.50	15.00	-	3.20	8.00
Other Counties.....	42.00	44.00	17.00	30.50	2.90	3.90
Total.....	60.00	60.50	19.00	29.00	4.70	6.10
Southern						
Beaver.....	-	-	-	-	-	8.60
Garfield.....	54.00	66.00	-	-	-	3.80
Iron.....	113.00	113.00	-	-	2.70	2.30
Kane.....	97.00	-	-	-	2.00	2.00
Piute.....	63.00	44.50	-	-	-	10.50
Washington.....	-	161.00	-	-	3.20	3.20
Wayne.....	145.00	104.00	-	-	10.00	8.30
Other Counties.....	136.00	123.00	26.00	27.50	6.80	-
Total.....	122.00	108.00	26.00	27.50	2.90	3.00
Other Districts.....	-	-	-	-	-	-
State Total.....	108.00	101.00	24.00	28.00	4.30	4.90

- Represents zero.

¹ Counties with missing data are included in the appropriate district's "Other Counties".

² Districts with missing totals are included in "Other Districts"

³ Counties not listed may also be included in "Other Counties" or "Other Districts".

Snapdragon Cut Flower Budget for One Field

Maegen Lewis, Graduate Research Assistant, Plants, Soils, and Climate, Utah State University
Melanie Stock, Assistant Professor, Department of Plants, Soils, and Climate, Utah State University
Ruby Ward, Professor, Department, Applied Economics, Utah State University
Brent Black, Professor, Department of Plants, Soils, and Climate, Utah State University
Dan Drost, Professor, Department of Plants, Soils, and Climate, Utah State University

This budget contains costs and returns for the production and sale of snapdragon cut flowers that were grown in a field (14 feet by 40 feet, the size of a high tunnel for comparison). The costs are representative, but should be adjusted where necessary for individual situations. Site selection, variety, pest management, and other practices will affect costs of the cut-flower operation.

Yield and Market: Stem quantity and quality were totaled across a variety of cultivars including, 'Animation', 'Chantilly', 'Legend', 'Madame Butterfly', 'Monaco', 'Potomac', and 'Rocket' and two harvest periods per year in Northern Utah. The first flush represents yields of a typical harvest season from May-July. After yield declined in July, stems were cut back and allowed to regrow for a second flush of August-September. Stems were sold through a local cut flower co-op for a fee of 30% of revenue and this cost is included in budget calculations.

Supplies

Production supplies were based on costs in Logan, Utah, and online sources, but may vary across regions and suppliers. All supplies must be purchased in year 1, but many last multiple years. Therefore, the cost of each input is annualized across the quantity used per year and the number of years until replacement.

Table 1. Snapdragon cut flowers from one field for production months May – Sep.

REVENUES						
Input	Grade	Units	Total stems	% Sold	Price/Unit	Total
1st Flush	Marketable	Stems	1277	100%	\$ 1.20	\$ 1,532.40
	Cull	Stems	1665	40%	\$ 0.75	\$ 499.50
2nd Flush	Marketable	Stems	363	100%	\$ 1.20	\$ 435.60
	Cull	Stems	796	40%	\$ 0.75	\$ 238.80
TOTAL REVENUES						\$ 2,706.30
OPERATING EXPENSES						
Supplies	Input	Units	Price/unit	Quantity	Years until replacement	Annual expense
Preplant & Site Preparation	Tiller rental	0.5 day	\$ 50.00	1	1	\$ 50.00
	Slow release fertilizer (14-14-14)	5 lb bag	\$ 19.95	1	2	\$ 9.98
	Urea fertilizer (46-0-0)	5 lb bag	\$ 19.99	1	5	\$ 4.00
	Drip irrigation kit	Kit	\$ 167.21	1	4	\$ 41.80
	Plastic mulch (1 mil)	Roll	\$ 60.95	1	7	\$ 8.71
Establishment & Maintenance	Snapdragon Plugs	Plug	\$ 0.22	576	1	\$ 126.72
	Stakes	12 pack	\$ 14.89	3	3	\$ 14.89
	Trellis	Roll	\$ 39.99	1	4	\$ 10.00

	Water Usage	Thous. gallons	\$ 1.62	8.8	1	\$ 14.31
	Insecticide	16 oz bottle	\$ 23.63	1	1	\$ 23.63
	Fertilizer (20-20-20)	4 lb bag	\$ 19.99	1	5	\$ 4.00
Harvest & Storage	Harvest Snips	Snip	\$ 6.08	1	2	\$ 3.04
	Buckets	Bucket	\$ 3.48	6	4	\$ 5.22
	Preservative	10 lb bucket	\$ 29.99	1	1	\$ 29.99
	Rubber Bands	1 lb bag	\$ 2.86	3	1	\$ 8.58
Total Supply Expenses						\$ 354.86

Labor	Input	Units	Quantity	Wage	Annual Wage	
Preplant & Site Preparation	Soil tillage	Hours	4	\$ 13.53	\$ 54.12	
	Apply preplant fertilizer	Hours	0.25	\$ 13.53	\$ 3.38	
	Install irrigation	Hours	1.5	\$ 13.53	\$ 20.30	
	Cover with plastic mulch	Hours	2	\$ 13.53	\$ 27.06	
Establishment & Maintenance	Planting labor	Hours	4	\$ 13.53	\$ 54.12	
	Trellising	Hours	2	\$ 13.53	\$ 27.06	
	Pesticide applications	Hours	2	\$ 13.53	\$ 27.06	
	Hand weeding	Hours	7	\$ 13.53	\$ 94.71	
Harvest & Storage	Harvest	Hours	46.70	\$ 13.53	\$ 632.19	
	Processing	Hours	22.8	\$ 13.53	\$ 308.82	
Total Labor expenses						\$ 1,248.82

Co-op Fees	Description	Unit	Quantity	Revenue	Fee	Total Cost
	30% delivery charge	Stems	2624	\$ 2,706.30	30%	\$ 811.89
TOTAL OPERATING EXPENSES						\$ 2,415.56

OWNERSHIP COSTS

Land*						\$ 20.00
TOTAL OWNERSHIP COSTS						\$ 20.00

TOTAL COSTS

TOTAL COSTS						\$ 2,435.56
NET PROJECTED RETURNS (14'x40' High Tunnel)						\$ 270.74
NET PROJECTED RETURNS (ft²)						\$ 0.48

*Land. One snapdragon field uses less than 2% of one acre and is assumed to be on land already owned. However, \$20 is used as a proxy (2% @ \$1,000 / acre).

Snapdragon Cut Flower Budget for One High Tunnel

Maegen Lewis, Graduate Research Assistant, Plants, Soils, and Climate, Utah State University
Melanie Stock, Assistant Professor, Department of Plants, Soils, and Climate, Utah State University
Ruby Ward, Professor, Department, Applied Economics, Utah State University
Brent Black, Professor, Department of Plants, Soils, and Climate, Utah State University
Dan Drost, Professor, Department of Plants, Soils, and Climate, Utah State University

This budget contains costs and returns for the production and sale of annual snapdragon cut flowers that were grown in a high tunnel (14 feet by 40 feet). The costs are representative, but should be adjusted where necessary for individual situations. Tunnel use, site selection, variety, pest management, and other practices will affect costs of the cut-flower operation.

Yield and Market: Stem quantity and quality were totaled across a variety of cultivars including, 'Animation', 'Chantilly', 'Legend', 'Madame Butterfly', 'Monaco', 'Potomac', and 'Rocket' and two harvest periods per year in Northern Utah. The first flush represents yields of a typical harvest season from May-July. After yield declined in July, stems were cut back and allowed to regrow for a second flush of August-September. Stems were sold through a local cut flower co-op for a fee of 30% of revenue and this cost is included in budget calculations.

Depreciation: Straight line depreciation was calculated for the high tunnel with no salvage value assumed after the years to replacement has been reached (Table 1). Initial costs were divided by the number of years until materials would need to be replaced to determine the annual depreciation cost. Costs will vary depending on materials used and high tunnel design.

Table 1. Snapdragon cut flowers in one high tunnel for production months May – Sep.

REVENUES						
Input	Grade	Units	Total stems	% Sold	Price/Unit	Total
1st Flush	Marketable	Stems	2231	100%	\$ 1.20	\$ 2,677.20
	Cull	Stems	821	40%	\$ 0.75	\$ 246.30
2nd Flush	Marketable	Stems	1523	100%	\$ 1.20	\$ 1,827.60
	Cull	Stems	1394	40%	\$ 0.75	\$ 418.20
TOTAL REVENUES						\$ 5,169.30
OPERATING EXPENSES						
Supplies	Input	Units	Price/unit	Quantity	Years until replacement	Annual expense
Preplant & Site Preparation	Tiller rental	0.5 day	\$ 50.00	1	1	\$ 50.00
	Fertilizer	5 lb bag	\$ 20.97	2	3	\$ 13.98
	Drip irrigation kit	Kit	\$ 167.21	1	4	\$ 41.80
	Plastic mulch (1 mil)	Roll	\$ 60.95	1	7	\$ 8.71
Establishment & Maintenance	Snapdragon Plugs	Plug	\$ 0.22	576	1	\$ 126.72
	Stakes	12 pack	\$ 14.89	3	3	\$ 14.89
	Trellis	Roll	\$ 39.99	1	4	\$ 10.00
	Frost blanket	Roll	\$ 58.00	1	13	\$ 4.46
	Water Usage	Thous. gallons	\$ 1.62	10.3	1	\$ 16.73
	Rodent, Insect control	packs	\$ 68.50	1	2	\$ 34.25
Harvest & Storage	Fertilizer	4 lb bag	\$ 19.99	1	5	\$ 4.00
	Harvest Snips	Snip	\$ 6.08	1	2	\$ 3.04
	Buckets	Bucket	\$ 3.48	6	4	\$ 5.22

Preservative	10 lb	\$ 29.99	1	1	\$ 29.99
Rubber Bands	1 lb bag	\$ 2.86	3	1	\$ 8.58
Total Supply Expenses					\$ 372.36

Labor	Input	Units	Quantity	Wage	Annual Wage
Preplant & Site Preparation	Soil tillage	Hours	4	\$ 13.53	\$ 54.12
	Apply fertilizer	Hours	0.25	\$ 13.53	\$ 3.38
	Install irrigation	Hours	1.5	\$ 13.53	\$ 20.30
	Install plastic mulch	Hours	2	\$ 13.53	\$ 27.06
Establishment & Maintenance	Planting labor	Hours	4	\$ 13.53	\$ 54.12
	Trellising	Hours	2	\$ 13.53	\$ 27.06
	Pesticide applications	Hours	2	\$ 13.53	\$ 27.06
	Hand weeding	Hours	7	\$ 13.53	\$ 94.71
	Install shade	Hours	2	\$ 13.53	\$ 27.06
	Monitor/ventilate	Hours	10	\$ 13.53	\$ 135.30
Harvest & Storage	Harvest	Hours	74.61	\$ 13.53	\$ 1,009.51
	Processing	Hours	12.89	\$ 13.53	\$ 174.39
Total Labor expenses					\$ 1,654.06

Co-op Fees	Description	Unit	Quantity	Revenue	Fee	Total Cost
	30% delivery charge	Stems	4640	\$ 5,169.30	30%	\$ 1,550.79
TOTAL OPERATING EXPENSES						\$ 3,577.21

FIXED EXPENSES

Input		Units	Price	Quantity	Years until replacement	Annual Costs
Annual Depreciation	High tunnel	High tunnel	\$ 319.34	1	8	\$ 39.92
High Tunnel	Construction labor	Hours	\$ 13.53	20	8	\$ 33.83
	Plastic film (6 mil)	Roll	\$ 130.00	1	4	\$ 32.50
	Shade cloth	Roll	\$ 199.99	1	8	\$ 25.00
TOTAL FIXED EXPENSES						\$ 131.24

OWNERSHIP COSTS

Land*						\$ 20.00
TOTAL OWNERSHIP COSTS						\$ 20.00

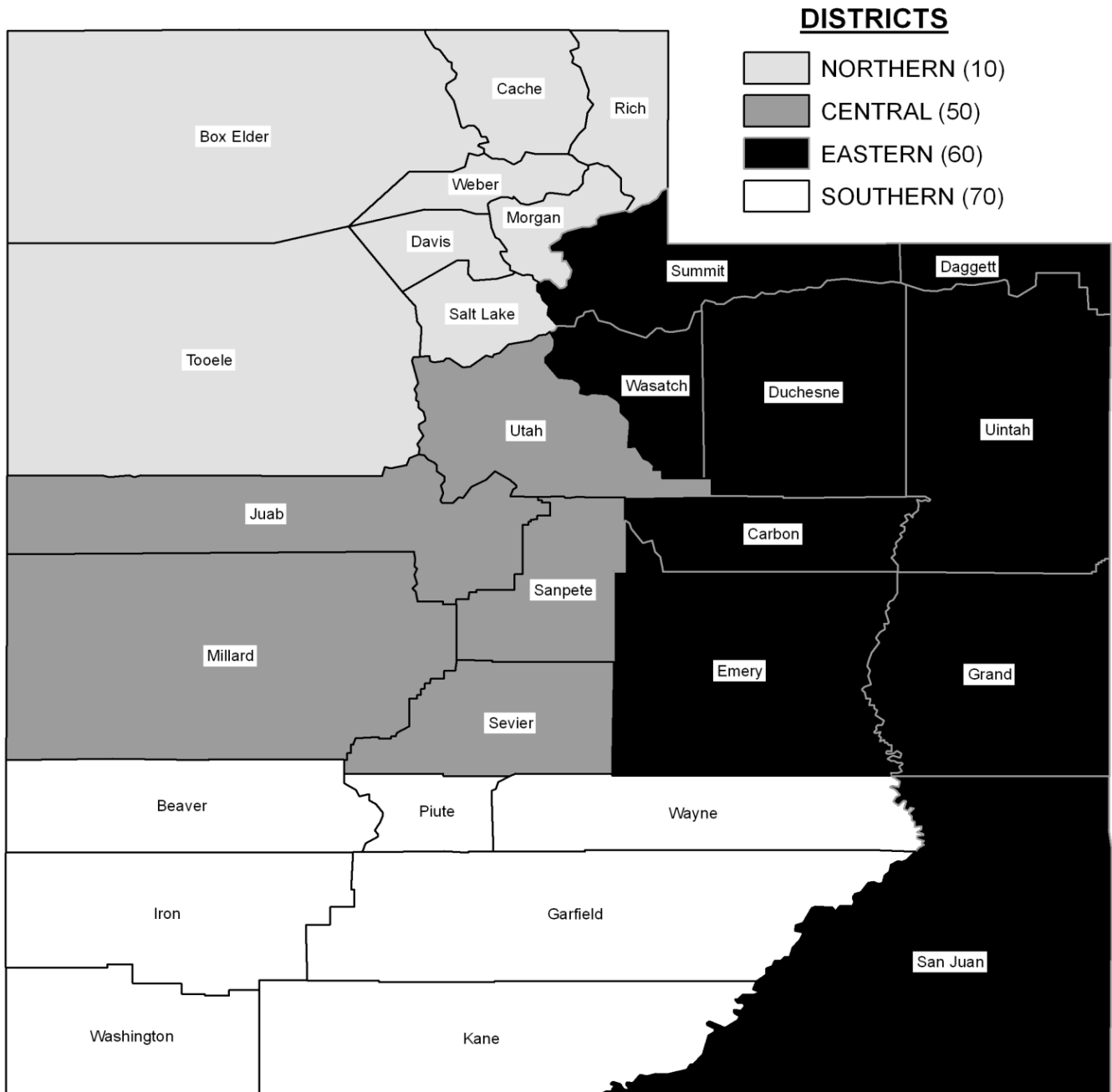
TOTAL COSTS **\$ 3,728.45**

NET PROJECTED RETURNS (14'x40' High Tunnel) **\$ 1,440.85**

NET PROJECTED RETURNS (ft²) **\$ 2.57**

* Land. One high tunnel uses less than 2% of one acre and is assumed to be on land already owned. However, \$20 is used as a proxy (2% @ \$1,000 / acre).

UTAH COUNTIES AND DISTRICTS



UNITED STATES DEPARTMENT OF AGRICULTURE
NATIONAL AGRICULTURAL STATISTICS SERVICE
MOUNTAIN REGION, UTAH FIELD OFFICE
350 S MAIN ST, SUITE 100
SALT LAKE CITY, UTAH 84101

PRESORTED STANDARD
POSTAGE & FEES PAID
USDA
PERMIT NO. G-38

OFFICIAL BUSINESS

ADDRESS SERVICE REQUESTED

