

WWW.AG.UTAH.GOV



**2019 Utah Agricultural Statistics  
and Annual Summary Report**  
Utah Department of Agriculture and Food

**UTAH AGRICULTURAL STATISTICS  
AND  
UTAH DEPARTMENT OF AGRICULTURE AND FOOD  
2019 ANNUAL REPORT**

*Compiled by the*  
**United States Department of Agriculture  
National Agricultural Statistics Service  
Mountain Region, Utah Field Office**

John Hilton, State Statistician  
Joel Gentillon, Survey Coordinator

350 S Main St, Suite 100  
Salt Lake City, Utah 84101

801-524-5003

Fax: 866-314-4029

[http://www.nass.usda.gov/Statistics\\_by\\_State/Utah/](http://www.nass.usda.gov/Statistics_by_State/Utah/)

E-mail: [nass-ut@nass.usda.gov](mailto:nass-ut@nass.usda.gov)

*Issued cooperatively by*  
**Utah Department of Agriculture and Food**

Kerry Gibson, Commissioner  
Sasha Clark, PIO

350 N Redwood Road  
P.O. Box 146500  
Salt Lake City, Utah 84114-6500  
801-538-7100

Fax: 801-538-7126

Web Page: <http://ag.utah.gov>

E-mail: [larrylewis@utah.gov](mailto:larrylewis@utah.gov)



Photos – provided by Utah’s Own and UDAF employees  
and purchased stock photography.  
ISSN: 0276-0193



Hubert Hamer, Administrator  
Troy Joshua, Director, Western Field Operations  
William Meyer, Regional Director, Mountain Region

# Introduction

The Utah Field Office of the Mountain Region of USDA's National Agricultural Statistics Service (NASS) and the Utah Department of Agriculture and Food (UDAF) are proud to present the 45<sup>th</sup> edition of this publication. Copies of the publication are only available on both organizations' Internet sites. This publication is provided to help inform farmers, ranchers, and the public about activities within UDAF and provide a detailed look at Utah's agricultural production. Also included are budgets for helping farmers and ranchers evaluate the potential profitability of various agricultural commodities.

Cooperation from farmers, ranchers, and agribusinesses responding to various survey questionnaires is essential for quality estimates; their cooperation make this publication possible. We thank them for their help and willingness to provide the data needed to produce these statistics.

This report would not be possible without the dedicated effort of our field and telephone enumerators who collect this data. We thank them for their diligence and professionalism.

Estimates presented are current for 2018 production and January 1, 2019 inventories. Data users that need 2019 production information, or additional historic data, should contact the Utah Field Office at 801-524-5003 or toll free at 1-800-747-8522.

State and U.S. statistics are available on the NASS Web page at <http://www.nass.usda.gov/>. Use the "Quick Stats" utility to search for current or historic data by clicking the Data and Statistics tab.

Prior year estimates are subject to revision and may have been revised in this publication. Data users should use this publication for previous years' data and not go back to earlier publications for those data.

The following agricultural Web pages may interest you.

Organization	Web Page Address
U. S. Department of Agriculture (Includes links to all USDA Agencies)	<a href="http://www.usda.gov/">http://www.usda.gov/</a>
USDA – NASS	<a href="http://www.nass.usda.gov/">http://www.nass.usda.gov/</a>
USDA - NASS Census of Agriculture	<a href="http://www.agcensus.usda.gov/">http://www.agcensus.usda.gov/</a>
USDA - Utah Agricultural Statistics	<a href="http://www.nass.usda.gov/ut/">http://www.nass.usda.gov/ut/</a>
Utah Department of Agriculture and Food	<a href="http://ag.utah.gov/">http://ag.utah.gov/</a>
National Association of State Departments of Agriculture (NASDA)	<a href="http://www.nasda.org/">http://www.nasda.org/</a>
Food and Agricultural Policy Research Institute	<a href="http://www.fapri.missouri.edu/">http://www.fapri.missouri.edu/</a>
CME Group	<a href="http://www.cmegroup.com/">http://www.cmegroup.com/</a>
Salt Lake City National Weather Service	<a href="http://www.wrh.noaa.gov/slc/">http://www.wrh.noaa.gov/slc/</a>
Western Regional Climate Center	<a href="http://www.wrcc.dri.edu/">http://www.wrcc.dri.edu/</a>
Utah Climate Center	<a href="http://climate.usurf.usu.edu/">http://climate.usurf.usu.edu/</a>
USU Extension Service	<a href="http://extension.usu.edu/">http://extension.usu.edu/</a>
Utah Agriculture in the Classroom	<a href="http://utah.agclassroom.org/">http://utah.agclassroom.org/</a>
Utah Farmers Union	<a href="http://www.utahfarmersunion.com/">http://www.utahfarmersunion.com/</a>
Utah Farm Bureau	<a href="http://www.utahfarmbureau.org/">http://www.utahfarmbureau.org/</a>
Utah Cattlemen's Association	<a href="http://www.utahcattlemen.org/">http://www.utahcattlemen.org/</a>
Utah Wool Growers Association	<a href="http://www.utahwoolgrowers.com/">http://www.utahwoolgrowers.com/</a>
Utah Dairy Council	<a href="http://www.utahdairycouncil.com/">http://www.utahdairycouncil.com/</a>

Information presented in this publication may be reproduced with the proper credit and no written approval is necessary.

Sincerely,



John Hilton, State Statistician  
Mountain Region, Utah Agricultural Statistics

# Table of Contents

Introduction.....	1
Table of Contents.....	2-3
Utah Department of Agriculture and Food 2019 Annual Summary Report.....	4
Message from the Commissioner.....	5
About the Utah Department of Agriculture and Food.....	6
UDAF Divisions.....	7
Animal Industry.....	8-9
Plant Industry.....	10-11
Food and Produce Safety.....	12-14
Chemistry Laboratory.....	15
Conservation.....	16
Office of the Commissioner.....	17-18

## Utah Rankings & Records

Rank & Quantity Produced, Selected Commodities – Utah, Leading State, & United States: 2018.....	20
Record Highs & Lows: Acreage, Yield, & Production of Crops – Utah.....	21
Record Highs & Lows: Livestock, Poultry, Honey, & Mink – Utah.....	22

## Census of Agriculture

Census of Agriculture: Producer & Farm Characteristics of Veterans, Young Producers, & New & Beginning Producers – Utah: 2017.....	23
Census of Agriculture: Producer Demographics – Utah: 2017.....	24

## Farmland Data

Number of Farms, Land in Farms, & Average Farm Size – Utah & United States: 2009-2018.....	25
Number of Farms by Economic Sales Class – Utah: 2009-2018.....	25
Farms: Acres by Economic Sales Class – Utah: 2009-2018.....	25
Farm Income: Cash Receipts by Commodity – Utah: 2013-2018.....	26
Farm Income Indicators – Utah: 2013-2018.....	27
Agricultural Exports: Estimated Value by Commodity Group – Utah: 2013-2018.....	28

## Crop Data

Annual Crop Summary.....	29
Usual Planting & Harvesting Dates.....	29
Barley: Area Planted & Harvested, Yield, Production, Price, & Value – Utah: 2009-2018.....	30
Corn for Grain: Area Planted & Harvested, Yield, Production, Price, & Value – Utah: 2009-2018.....	30
Corn for Silage: Area Harvested, Yield, & Production – Utah: 2009-2018.....	30
Alfalfa Hay: Area Harvested, Yield, Production, Price, & Value – Utah: 2009-2018.....	31
Other Hay: Area Harvested, Yield, Production, Price, & Value – Utah: 2009-2018.....	31
All Hay: Area Harvested, Yield, Production, Price, & Value – Utah: 2009-2018.....	31
Hay Stocks: Position & Month – Utah: 2009-2018.....	32
Alfalfa Hay: Production & Price – Utah: 2009-2018.....	32
Oats: Area Planted & Harvested, Yield, Production, Price, & Value – Utah: 2009-2018.....	32
Safflower: Area Planted & Harvested, Yield, Production, Price, & Value – Utah: 2009-2018.....	32
Winter Wheat: Area Planted & Harvested, Yield, Production, Price, & Value – Utah: 2009-2018.....	33
Other Spring Wheat: Area Planted & Harvested, Yield, Production, Price, & Value – Utah: 2009-2018.....	33
All Wheat: Area Planted & Harvested, Yield, Production, Price, & Value – Utah: 2009-2018.....	33
Barley Stocks: Located Off Farm by Quarter – Utah: 2010-2019.....	34
Corn Stocks: Located Off Farm by Quarter – Utah: 2010-2019.....	34
Oat Stocks: Located Off Farm by Quarter – Utah: 2010-2019.....	34
Wheat Stocks: Located Off Farm by Quarter – Utah: 2010-2019.....	34

## Fruit & Vegetable Data

Apples: Acreage, Yield, Production, Price, & Value – Utah: 2009-2018.....	35
Apricot: Acreage, Yield, Production, Price, & Value – Utah: 2010-2018.....	35
Sweet Cherry: Acreage, Yield, Production, Price, & Value – Utah: 2010-2018.....	35
Tart Cherries: Acreage, Yield, Production, Price, & Value – Utah: 2010-2018.....	36
Peaches: Acreage, Yield, Production, Price, & Value – Utah: 2009-2018.....	36

## Table of Contents (Continued)

### Livestock Data

Operations: All Cattle & Calves – Utah: 2007, 2012, & 2017.....	37
Operations with Beef Cows – Utah: 2007, 2012, & 2017.....	37
Operations with Milk Cows – Utah: 2007, 2012, & 2017.....	37
Operations with Sheep or Lambs – Utah: 2007, 2012, & 2017.....	37
Operations with Hogs & Pigs – Utah: 2007, 2012, & 2017.....	37
Cattle & Calves: Number by Class & Calf Crop – Utah: January 1, 2015-2019.....	38
Cattle & Calves: Balance Sheet – Utah: 2014-2018.....	38
Cattle & Calves: Production, Marketings, & Income – Utah: 2014-2018.....	38
Dairy: Milk Production & Milkfat – Utah: 2014-2018.....	39
Milk & Cream: Marketings, Used on Farm, Income, & Value – Utah: 2014-2018.....	39
Manufactured Dairy Products – Utah: 2014-2018.....	39
Milk Cows: Production by Month – Utah: 2016-2018.....	40
Commercial Cattle Slaughter – Utah: Monthly 2017 & 2018.....	40
Hogs & Pigs: Total Breeding & Market Inventory, Farrowings, Pigs per Litter, Pig Crop, & Marketings – Utah: December 1, 2009-2018.....	41
Hogs & Pigs: Balance Sheet – Utah: 2014-2018.....	41
Market Hogs & Pigs: Inventory by Weight Group – Utah: December 1, 2009-2018.....	41
Hogs & Pigs: Production, Marketings, & Income – Utah: 2009-2018.....	42
Commercial Hog Slaughter – Utah: Monthly 2017 & 2018.....	42
Sheep & Lambs: Inventory by Class & Lamb Crop – Utah: January 1, 2015-2019.....	43
Wool: Production & Value – Utah: 2014-2018.....	43
Sheep & Lamb: Lamb Crop, Farm Slaughter, & Death Loss – Utah: 2010-2019.....	43
Sheep & Lamb Losses – Utah: 2013-2018.....	44-47
Layers & Eggs – Utah: 2014-2018.....	48
Turkey: Production & Value – Utah: 2012-2018.....	48
Mink: Pelts Produced, Females Bred, Average Price, & Value – Utah & United States: 2009-2018.....	49
Pelts Produced in 2018 & Females Bred for 2019, by Type – Utah & United States:.....	49
Honey: Number of Colonies, Yield, Production, Stocks, Price, & Value – Utah: 2009-2018.....	50
Trout: Total Value of Fish Sold & Foodsize Sales – Utah: 2009-2018.....	50

### Prices Received

Marketing Year Average Prices, by Commodity – Utah: 2010-2018.....	51
Prices Received: Monthly Averages by Selected Commodities – Utah: 2009-2018.....	52-53
Farm Labor: Number Hired, Wage Rates, & Hours Worked – Mountain II Region: July 2018, October 2018, January 2019, & April 2019.....	54
Grazing Fees: Annual Average Rates – Utah: 2009-2018.....	54

### County Estimates

County Estimates: Select Items & Years – Utah.....	55-56
County Estimates: Alfalfa & Alfalfa Mixtures for Hay, All Cropping Practices – Utah: 2017 & 2018.....	57
County Estimates: Cattle – Utah: January 1, 2018 & 2019.....	58
County Estimates: Sheep – Utah: January 1, 2018 & 2019.....	59
County Estimates: Cash Rent per Acre – Utah: 2018 & 2019.....	60

### Enterprise Budgets

Southern Utah 110 Head Cow/Calf Budget with Winter Feeding.....	61
Southern Utah 110 Head Cow/Calf Budget with Winter Grazing.....	62
Southern Utah Alfalfa Budget-100 Acres.....	63
Northern Utah Roundup Ready Corn Grain Budget-250 Acres.....	64
Northern Utah Alfalfa Budget-100 Acres.....	65
Central Utah Cow/Calf Budget-96 Head.....	66
Northern Utah Cow/Calf Budget-100 Head.....	67
Peony Cut Flower Budget for One High Tunnel.....	68
Enterprise Budget Peony Cut Flower, in High Tunnel (Years 4-20).....	69
Enterprise Budget Red Peppers with Shade.....	70
Red Bell Pepper with Shade Enterprise Budget for 1 Acre.....	71
Red Bell Pepper with Shade Enterprise Budget for 100 ft. Row.....	72

Utah Counties and Districts Map.....	73
--------------------------------------	----



UTAH DEPARTMENT OF AGRICULTURE  
AND FOOD ANNUAL REPORT



# Message from the Commissioner

My friends – agriculture and food producers across our great and beautiful state – the 2018-19 fiscal year has come and gone but the work goes on. As always, the Utah Department of Agriculture and Food (UDAF) has much to celebrate and look forward to. I feel especially humbled and proud to stand at the head of this small but critical statewide agency.

As a sixth-generation dairy farmer, I've always considered it an honor to produce valuable commodities for the citizens of our state. It isn't lost on me that ranchers and farmers hold a special stewardship that ultimately sustains a quality of life for citizens and ourselves that is enviable to other states.

I am particularly proud of several accomplishments and wins we are experiencing at the Department and want to tip my hat to our team. Each day, they work hard to build on and promote the vast array of programs and services at UDAF – many of which impact every citizen on a daily basis, almost without notice.

I will highlight here just a few things but invite you to review the pages of this book to learn more as I cannot possibly include everything, as much as I would like to.

First, our most public and visible set of programs, medical cannabis and industrial hemp are moving along as planned and scheduled. Industrial hemp successfully navigated the rule-writing process last year and launched earlier this year. Likewise, Medical Cannabis program, too, is poised to meet its early 2020 deadline.

We continue to invest lots of effort in helping to promote and market local food producers. The local food movement is alive and well and our Utah's Own brand continues to grow and facilitate that trust between consumers and producers.

During the 2019 Legislative Session we received some additional funding for predator control and water quality projects. As predator populations continue to grow, it's important that we do our part to help protect the economic interests of our sheep, poultry, and ranching industries. Likewise, Utah is the second driest state in the nation and water conservation funding helps us manage that burden.

UDAF, our state and federal partners, ranchers, and others continue to enjoy a rich and aligned dialogue that protects our natural resources. In the end we all benefit, but our ranching industry relies on our ability to convene stakeholders so that grazing innovation and efficiencies can continue.

And, finally, I am pleased with the development of Utah's first Rapid Response Team that will be coming online in the year ahead. This effort, along with our on-going inspections saves lives and is something we cannot underscore the importance of. The RRT will make us stronger and more prepared than ever.

Thank you for your interest and support of UDAF. I look forward to seeing and meeting each of you in the year ahead. Please don't hesitate to reach out if I can be helpful in any way.

Sincerely,

Kerry W. Gibson  
Utah Commissioner of Agriculture and Food

# About the Utah Department of Agriculture and Food

With roots dating to 1921, the Utah Department of Agriculture and Food is one of the State's oldest agencies. It oversees dozens of legislatively mandated programs that promote the healthy growth of Utah agriculture, the conservation of our natural resources and the protection of our food supply. Two important programs are the Utah Grazing Improvement Program and the Invasive Weeds Mitigation Program. Both work to improve the health of our rangelands and watersheds.

In the area of food safety, the Department inspects the state's 4,000 retail stores and the many food processing plants for food quality and safety and correct item pricing.

The Department's Utah's Own Program works to reconnect consumers with their food supply and promotes the benefits of Utah's locally grown and processed foods which represent 15 percent of Utah's economy. The Department also protects animal health and the state's \$1 billion livestock industry, as well as guards against invasive insects.



## Our Mission

Promote the healthy growth of Utah agriculture, conserve our natural resources and protect our food supply



## Our Values

Integrity and respect; Stewardship and accountability; Growth and achievement; People and partnerships; Heritage and culture



## Our Priorities

Improve communication and awareness of agriculture; Conserve and enhance Utah's lands and natural resources; Ensure food safety and consumer protection; Build partnerships, advocates and develop agricultural leaders





# UDAF Divisions

The Department of Agriculture and Food is responsible for the administration of Utah's agricultural laws, which mandate a wide variety of activities including inspection, regulation, information, rulemaking, loan issuance, marketing and development, pest and disease control, improving the economic position of agriculture, and consumer protection.

## Office of the Commissioner

Helps the Department fulfill its mission to protect and promote agriculture by raising public awareness and demand for Utah agriculture and food products.



## Administrative Services Division

Provides support to all divisions within the Department to ensure state policies are implemented to meet audits conducted by State Finance and State Auditor's Office.

## Animal Division

Prevention and control of animal disease through six main programs.



## Conservation Division

Preserve and protect Utah's soil and water resources and ensure the development and utilization for the betterment of Utah agriculture and its people.

## Laboratory Analytics Division

State laboratory chemists and microbiologists verify food and product samplings as a service for other department divisions.



## Plant Division

Ensures disease and pest-free plants, grains, seeds, as well as properly labeled agricultural commodities, and the safe application of pesticides and farm chemicals. Assist farmers and ranchers in caring for and enhancing Utah's natural resources.

## Regulatory Division

Food safety oversight and consumer protection of agricultural products and services.

# Animal Industry

The mission of the Animal Industry Division is prevention and control of animal disease through outbreak prevention, monitoring, education and quarantine as necessary. The division also actively engages in livestock brand identification and theft prevention.

## Major Programs

- Animal health
- Meat and poultry inspection
- Livestock inspection
- Fish health
- Elk farming and elk hunting parks
- Veterinary diagnostic labs

## Division Highlights

### Animal Health

- 24,245 bulls were tested for trichomoniasis in 2018-19
- 0 positive cases
- 1 case of theileria equi-caused equine piroplasmiasis in racing horses that was treated and released
- No incidents of vesicular stomatitis found in 2018-19
- No confirmed cases of avian influenza so far in 2019

### Animal Inspections

- 918,110 cattle, horse and elk were inspected
- 57,370 inspection certificates were issued
- 1,743 missing or stolen animals returned to their owners
- 15,810 brands and earmarks registered this year

### Meat Inspection Program

- 25 meat inspection staff members with UDAF inspect
- 113 total facilities statewide





## Predation Control

The Utah Wildlife Services Program (WS) is a cooperative effort between the UDAF and the U.S. Department of Agriculture. Funding comes from state and federal sources, as well as from ranchers who pay a per-head assessment. The focus of the program is to protect livestock, primarily adult sheep, lambs and calves from predators, including: Coyotes, Cougars, Bears, and Ravens.

### Sheep Losses to Predators

- Coyotes 20,300 (up 25% from 2017)
- Cougars and Bears 8,000 (up 14% from 2017)

Predator management is also needed to sustain and improve wildlife populations. WS worked with the Utah Division of Wildlife Resources (UDWR) in 22 deer units, 11 sage grouse management areas, 9 bighorn sheep units, 5 pronghorn areas, and 8 waterfowl management areas.

WS also plays a critical role in early detection and management of invasive species, like feral swine. WS conducts aerial surveys in areas with reported and verified sightings of feral swine. WS worked with the UDWR and US Fish and Wildlife Service to conduct a feral swine detection project, where trained dogs were used to search for any sign or presence of feral swine on several UDWR wildlife management areas and USFWS wildlife refuges.

WS staff also trapped, banded, and relocated 628 raptors from Utah airports to prevent them from being struck by aircraft and threatening human safety.

WS also provides technical assistance and training to the public about problems related to urban wildlife such as skunks, raccoons, birds and other animals. WS continues to conduct disease monitoring in the urban program and responds to human safety cases involving cougars or bears statewide when assistance is requested by the UDWR.

# Plant Industry Division

The Division of Plant Industry and Conservation ensures consumers disease-free and pest-free plants, grains, seeds, properly labeled agricultural commodities, and the safe application of pesticides and farm chemicals.

## Plant Regulatory Programs

- Insect control
- Fertilizer and feed
- Seed & grain inspection and testing
- Pesticide applicator licensing and product registration
- Fruit and vegetable inspection and grading
- Plant quarantine & pest survey
- Organic certification and nursery program

## Pesticide Enforcement Program

The UDAF pesticide program includes education, licensing and enforcement. Program highlights for 2018-19 include

- 445 inspections and investigations launched
- 84 notices of violation sent
- 100 pesticide applicator training sessions

UDAF also certifies and re-certifies licensed applicators. Statewide there are 7,638 commercial, non-commercial and private applicators.

## Nursery Inspection

The Nursery Program facilitated 4 compliance agreements and reviewed over 2,000 interstate plant shipments for quarantine compliance. In 2018, 834 commercial nurseries were registered with UDAF, of which, roughly 665 were inspected.

## Etmology Program: Honey Bee Inspections

In 2018, state inspectors checked 3,937 beehives in 212 apiaries across 18 counties for diseases and pests that are known to harm honey bees. Nearly 4% of these colonies were found infected with American foulbrood (*Paenibacillus* larvae), the most devastating of bee diseases. This infection rate was the highest level recording in many decades. UDAF sent out disease alerts to beekeepers in areas affected, continued training veterinarians regarding their role in prescribing medications to combat the infection and worked with beekeepers to treat or destroy infected colonies. State inspectors will continue suppression efforts in 2019.



# Plant Industry Division



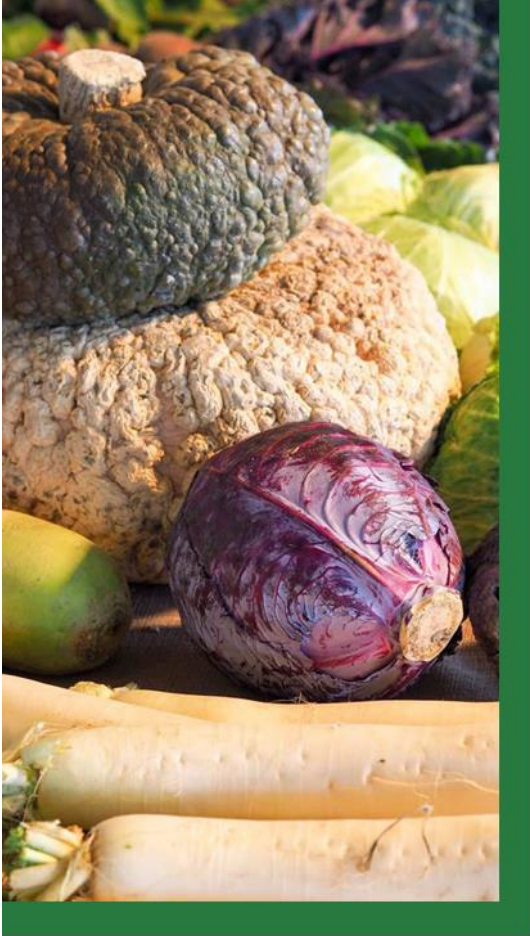
## Invasive Species Mitigation (ISM) Program

As part of the noxious weed control program, the Utah Legislature has dedicated funds to combat noxious and invasive weeds throughout Utah. The grants are managed through a competitive grant program and are awarded to projects based on species, Fire threat, water impact, agriculture impact, wildlife impact, economic impact, erosion, and partnerships. In 2018-19, the ISM program moved the grant cycle from the calendar fiscal year to align with the state fiscal year. This created a funding gap of 6-months for ongoing projects. Plant Industry responded across the state with 24 stop gap grant awards to ensure continued success for targets species and USU research projects. This included project across 15 Counties covering 18 species.

### Invasive Species Detection

- 2,240 Japanese beetle traps were placed across the state (all 29 counties), yielding the location of three specimens in Salt Lake City's west-side industrial district.
- 2,138 European Gypsy moth traps were deployed around the state, yielding no pests. Only one gypsy moth has been detected in Utah within the last 10 years.
- 40 Emerald Ash Borer traps in 23 locations across five counties were placed, yielding no pests. USDA Animal Plant Health Inspection Service (APHIS) suspended their trapping program for this species in uninfested states.
- 39 European corn borer traps were placed in six counties, yielding no pests.
- 20 Pine shoot beetle traps were placed in five different counties, yielding no pests.

# Food and Produce Safety



Protecting the safety and integrity of the food supply is one of the Utah Department of Agriculture and Food's (UDAF) core functions. The Regulatory Services Division takes that responsibility very seriously. The division's regulatory functions go beyond food.

## Main Programs

- Food Safety Programs
  - Retail Food Program
  - Manufactured Food Program
  - Kratom
  - Domestic Game Slaughter
- Weights and Measures
- Dairy and Egg Inspections
- Food Labeling and Consumer Protection
- Bedding, Quilted Clothing and Upholstered Furniture

### Legislative Update

The Produce Safety Bill HB 033 just recently passed in the 2019 Utah Legislative Session. This Bill includes Produce as a Food within the definitions of Utah Code Annotated Title 4. The Bill will allow for certain produce farms covered by 21 CFR 112, to be regulated as a food under the Utah Wholesome Food Act. Our Utah Food Protection Rule, R70-30 adopts the 21 CFR's by reference.

### Produce Safety Inspections

Large produce farms which are covered by the PSR with an average over \$ 500K will be scheduled for an inspection during the 2019 harvest. The first inspection will be an educational visit.

### Farm Inventory Updates and Registration

Farmers can go to the website interactive tool to register. [producesafety.utah.gov/tool](http://producesafety.utah.gov/tool)

### New Kratom Program

With the passage of SB58, Kratom Consumer Protection Act, UDAF now oversees its regulation. This includes regulation of those preparing, distributing, selling or offering to sell any Kratom product. As such, UDAF will be making rules, setting fee structures, and providing enforcement during FY2019.

### New Domestic Game Slaughter Program

With the passage of HB412, Domesticated Game Slaughter, UDAF now assumes regulatory authority over this program. This includes regulation of the importation, possession, or transportation of domesticated elk into or within the state. It also empowers UDAF to inspect domesticated elk facilities and issue quarantines to help prevent or control disease outbreaks.

# Food and Produce Safety

## Weights and Measures

UDAF Weights and Measures inspectors are located throughout the state to ensure equity prevails. In 1918, there were 5,195 businesses in Utah with 57,511 weight or measurement devices involved in consumer transactions. This includes inspection of diesel and gasoline pumps, vehicle tank meters, rack meters, high-volume petroleum meters and propane meters.

- 1,723 artifacts from industry and 422 artifacts from Weights and Measures were tested for a certificate of calibration
- 144 Wheel Loader Weigh Scale inspections were conducted
- 815 gas stations and 29,294 gasoline pumps and 2,814 fuel storage tanks were inspected
- 740 Fuel lab analyses were performed
- 797 establishments that have 5,645 small capacity scales (0 lbs. – 1000 lbs.) were inspected
- 856 price verification inspections of retail check-out scanners were conducted
- 315 propane meters from LPG dispensers or delivery trucks
- 143 vehicle tank meter, 23 rack meter, and 50 water meter inspections of airport fuel trucks, fuel delivery trucks, cement batch plant water meters, and other large meters
- 1,531 large scales (1,000 lbs. and up) from 724 establishments were inspected
- 69 CNG devices were inspected to verify if NIST Handbook 44 requirements are met
- 99 consumer complaints regarding weights and measures were investigated
- 293 weights and measures service technicians were registered, and they filed 953 service reports

## Food Establishments

The Food program has 4,845 registered establishments. This is an increase of 213 registered establishments from last year. Our inspectors investigated 179 consumer complaints in 2018.

Inspectors in the retail food program conducted 5,475 inspections in 2018. There were 4043 routine inspections, 692 follow ups, 149, pre-operational, and 591 were other inspections which includes, complaints, truck wrecks, consultations, and plan review inspections.

During 2018 the food program conducted 283 food dispositions totaling 5529 lbs. of food and with a value of \$43,018,720. Food that has been disposed of has been determined by our inspectors to be unsafe for human consumption.





## Dairy Report

While the number of cows in Utah has remained steady for 50 years (95,000 – 100,000), the number of dairy farms dropping out is accelerating at a faster rate than any other time in history.

- As of 2018-19, Utah has 178 dairy farms.
- Milk production continues to rise as producers are turning to technology (robotic milkers) to stay competitive; the number of robotic milkers is expected to triple by the end of 2019.
- Market growth in production is flat, in part due to recent international tariff and trade issues.
- The Herd Share Program continues to grow slowly but steadily.

## Egg and Poultry Programs

Shell egg production is down 2.53% from last year with 3,001,791 cases graded. Egg products production is up 27% from last year with 61,540,029 lbs. inspected. Poultry production is down 33% from last year with 81,141,297 lbs. graded.

## Bedding, Upholstered Furniture and Quilted Clothing


In 2018, Utah issued approximately 5,700 licenses which generated nearly \$600,000 in revenue. Annual license fees make the program self-sustaining and allow laboratory-testing of suspect products to determine whether their contents are accurately labeled and free from filth and other contaminants. The number of active licenses has more than quadrupled since 2001. The program utilizes two full time staff members and shares one office technician are currently employed.

## Outreach and Education Activities

USU Ext and UDAF conducted 6 PSA Produce Grower trainings statewide and about 140 individuals have been trained. USU Extension and Plant Industry On-Farm Readiness has been out contacting farms to prepare them for Produce Safety Inspections. USU and Plant Industry have prepared various educational materials as a resource to Utah produce growers.




# Chemistry Laboratory



The Laboratory Services Division operates as a service for various divisions within UDAF. The division laboratories provide chemical, physical, and microbiological analyses of dairy, meat, and other agricultural and food products. All samples analyzed in the laboratories are collected and forwarded by various field inspectors from the divisions of Plant Industry and Conservation, Regulatory Services, and Animal Health. Most of these samples are tested for specific ingredients as stated by the associated label guarantee. Some products are also examined for the presence of undesirable materials and contaminants. Specific labs include:


- Dairy testing laboratory
- Meat Laboratory
- Pesticide residue laboratory
- Feed and fertilizer laboratory

## Dairy Testing Laboratory



The dairy testing lab is responsible for testing Grade-A milk and dairy products, including pre-pasteurized milk as well as finished dairy products. The laboratory also administers an industry laboratory certification program.

## Meat Laboratory




The Meat Laboratory analyzes meat and meat product samples obtained during inspections of plant and processing facilities in Utah. Tests are performed for component levels, and to ensure products are free of food borne pathogens.

## Feed and fertilizer, and pesticide residue Laboratories

The Feed and Fertilizer Laboratory analyzes feed and fertilizer products to ensure label guarantees; tests are also done to detect the presence of harmful substances, such as drug residues and toxins. Various sample types are analyzed for the presence of pesticide residues to support misuse investigations.

## Cannabis Testing Laboratories



The UDAF Chemistry and Microbiology Labs perform laboratory testing required in the regulation of cannabis, including industrial hemp and medical cannabis. Testing is done to ensure hemp plants and products meet the requirement for THC content and label claims. Cannabis plants and products are also tested for the presence of contaminants, such as pesticide residues, residual extraction solvents, heavy metals, and microbial contaminants.

## Significant Events

The UDAF Laboratories have begun and are fully engaged in testing of hemp plants and products in support of Utah's hemp program administered by UDAF. Continuing preparations are being made for laboratory testing associated with the medical cannabis program, with implementation slated for early 2020.



# Conservation Division

The division also assists farmers and ranchers in caring for and enhancing Utah's natural resources.

The major plant-related conservation programs of the division include:

- Noxious and invasive weeds
- Grazing improvement program
- Conservation commission
- Conservation districts
- Agricultural resource development loan program

## GIP Program

The UDAF – GIP program is designed to empower the existing grazing community with the intent of improving range conditions as a means to improve the environment and the economic wellbeing of rural Utah. Utah's livestock grazing industry contributes more than \$350 million to Utah's economy and generates thousands of jobs (livestock grazing is cattle & calves and sheep & lamb).

Considering Utah's changing demographics and the decline in public land grazing opportunity, the need for state-level representation for the livestock industry became a priority. GIP coordinators are working daily with producers to extend watering reach and grazing opportunities.

## Agricultural Resource Development Loans

The UDAF Loan Section manages several loan funds. The largest program in the Loans Section, with 55 % of its assets and over 500 loans, is the Agricultural Resource Development Loan (ARDL) program. The ARDL has been in operation since 1976.

ARDL is administered by the section for the Utah Conservation Commission. Examples of eligible projects include animal waste management, water usage management (irrigation systems and wells), rangeland improvement, on farm energy projects, and disaster mitigation and cleanup. ARDL Interest rates are fixed at 3.00%, 2.75% or 2.50% based on the amount of the loan. A term of either seven or 15 years will be determined by the type of collateral taken to secure the loan. A four percent administration fee is added to the loan amount and covers marketing and project planning costs.

## Utah Conservation Commission

The 12 member commission consults with stakeholders as it strives to protect the natural resources within the state and administers the conservation district programs. The mission of the Conservation Districts is to enable Utah's private land managers to protect and enhance their soil, water and related natural resources. This is done in cooperation with the UCC and Utah's 38 CD's.

# Office of the Commissioner

As always, the Department's Office of the Commissioner handled numerous projects, programs, and initiatives that supported the needs of Utah's diverse agriculture and food industry.

## Industrial Hemp and Medical Cannabis Implementation

The Department completed its responsibilities under HB302 and SB130 by writing rules and regulations for the new Industrial Hemp Program. The program was able to launch on-time in late Winter 2019 and is currently licensing 1,046 products, with 199 companies registered to grow it and 43 companies registered to process it into products.

During a special interim session of the Utah Legislature in December 2018, lawmakers passed HB3001 as a replacement to Ballot Proposition 2, approved by voters a month earlier. The new law directs UDAF to license and register growers and processors of medical cannabis while the Utah Department of Health (UDOH) is to register providers, license pharmacies, and issue cards to patients. The program is currently on schedule to meet its deadline of March 2020.

## International Trade

As the world economy continues to expand, it's important for Utah's agri-businesses to look beyond its borders for growth opportunities. In 2018, UDAF officials joined with industry producers to go on several trade missions to Korea, Japan, and Africa, making critical contact with food manufacturers in those countries about Utah's high-quality commodity and food products. These missions have opened doors and created awareness that will help Utah farmers and ranchers diversify and grow their presence in the marketplace. UDAF also welcomed key purchasing agents of Canada's largest grocery food chains in 2019. Nearly 20 local food producers got the chance to market their goods to our neighbors to the north and create invaluable contacts.

## Marketing and Communications

The UDAF Communications Division worked feverishly to field a high volume of media inquiries about the Cannabis program. But it also managed press relations on topics and issues related to the full spectrum of services and responsibilities contained within the Department.

The Program also maintains an active support to all programs and services through social media; content development for print, digital, and video; website updates and maintenance for the main UDAF site and Utah's Own site; event management work; and general promotional support and collaboration for industry producers and partners.



Throughout FY2018-19, UDAF worked with the Department of Technology Services to develop a new website on a different platform that is more intuitive on both the front and back ends, creating greater efficiencies. The new site was launched in June and categorizes information similar to how it has in the past but with many more navigation tools and a modern layout and design.

## Utah's Own/Local Buying Campaign

Utah's Own promotes local agriculture and food through a branding and marketing program. Companies growing or producing food locally join the program by paying a nominal fee to utilize the Utah's Own trademark that helps consumers readily identify local products. This year, the Utah's Own staff expanded on the successful advertising campaign of last year and increased consumer awareness of local products and the Utah's Own brand. The goal was to make the Utah's Own brand even more valuable and recognizable by deepening its use across the state. A new integrated marketing campaign utilizing billboards, digital advertising, and radio advertising was launched late 2018 to increase sales of local food producers in the state.

## Market News Reports

Market news collects and reports commodity price information critical for agriculture producers and agribusinesses. To provide this important service the Division monitors livestock auctions in Cedar City, Salina, Willard, Roosevelt, and Monroe. UDAF also relays information about Hay, Wheat, and Dairy.

## Training and Preparation

Each year, UDAF monitors and acts on a wide range of different threats, including invasive species, insects, and foodborne illnesses. The Department takes its regulatory oversight seriously, quickly responding to areas of concern that threaten the livelihood and safety of all Utah citizens. Countless hours of training and preparation go into this work, and this year was no different as each division within the Department honed its skills and strengthened its resolve to serve the public.

## Agriculture Mediation

UDAF continues to provide services to the agriculture community through its USDA Certified Mediation Program. The program assists farmers and ranchers who face adverse actions in connection with USDA programs. Utah is one of 34 certified programs in the country.

## Agriculture in the Classroom

As people get further removed from the farm and the sources of their food, the AITC program strives to increase agricultural literacy among the state's school students. Much of the program's resources go into teacher training and providing classroom materials.

## Specialty Crop Block Grant Program

The purpose of the Specialty Crop Block Grant Program (SCBGP) is to solely enhance the competitiveness of specialty crops. Specialty crops are defined as "fruits, vegetables, tree nuts, dried fruits, horticulture, and nursery crops (including floriculture). During 2018 over \$300,000 was distributed for research, development, and project expansion. For 2019, we in the process of contracting with seven projects for a total of more than \$325,000.

# UTAH AGRICULTURE STATISTICS



**Rank & Quantity Produced, Selected Commodities – Utah, Leading State, & United States: 2018**

Commodity	Unit	Utah		Leading State		United States
		Rank	Production	State	Production	
<b>Field Crops</b>						
Barley.....	(1,000 Bu)	12	1,376	Idaho	53,530	153,082
Corn, Grain .....	(1,000 Bu)	40	4,004	Iowa	2,508,800	14,420,101
Corn, Silage .....	(1,000 Tons)	25	1,035	Wisconsin	13,400	121,361
Hay, All.....	(1,000 Tons)	27	2,195	Texas	8,374	123,600
Hay, Alfalfa.....	(1,000 Tons)	13	1,850	Idaho	4,410	52,634
Hay, Other.....	(1,000 Tons)	37	345	Texas	7,590	70,966
Safflower Production.....	(1,000 Lbs)	5	10,920	California	142,800	236,380
Wheat, All <sup>1</sup> .....	(1,000 Bu)	29	5,356	North Dakota	363,483	1,884,458
Wheat, Other Spring .....	(1,000 Bu)	8	468	North Dakota	318,010	623,232
Wheat, Winter .....	(1,000 Bu)	27	4,888	Kansas	277,400	1,183,939
<b>Fruits</b>						
Peach Production .....	(Tons)	13	4,600	California	510,000	732,050
Tart Cherry Production .....	(Mil Lbs)	2	43	Michigan	264	353
<b>Livestock <sup>2</sup></b>						
All Cattle & Calves .....	(1,000 Head)	34	810	Texas	13,000	94,760
All Cows <sup>3</sup> .....	(1,000 Head)	33	440	Texas	5,200	41,119
Calf Crop.....	(1,000 Head)	31	385	Texas	4,750	36,403
Beef Cows <sup>3</sup> .....	(1,000 Head)	28	340	Texas	4,655	31,766
Milk Cows <sup>3</sup> .....	(1,000 Head)	21	100	California	1,730	9,353
Milk Production .....	(Mil Lbs)	21	2,322	California	40,413	217,575
All Chickens (Excl Broilers)...	(1,000 Head)	23	5,852	Iowa	72,579	527,573
Layers on Hand Dec. 1 .....	(1,000 Head)	23	4,713	Iowa	58,188	396,870
Egg Production <sup>4</sup> .....	(Mil Eggs)	23	1,403	Iowa	16,274	109,192
All Hogs & Pigs .....	(1,000 Head)	16	710	Iowa	23,300	74,550
Breeding Hogs & Pigs.....	(1,000 Head)	16	80	Iowa	1,020	6,326
Pig Crop <sup>4</sup> .....	(1,000 Head)	16	1,334	Iowa	25,034	133,341
Market Hogs & Pigs .....	(1,000 Head)	15	630	Iowa	22,280	68,225
Honey Production .....	(1,000 Lbs)	23	1,066	North Dakota	38,160	152,348
All Sheep & Lambs .....	(1,000 Head)	5	290	Texas	750	5,230
Breeding Sheep & Lambs.....	(1,000 Lambs)	4	260	Texas	590	3,820
Lamb Crop .....	(1,000 Head)	3	235	Texas	365	3,235
Market Sheep & Lambs ....	(1,000 Head)	11	30	California	245	1,410
Wool Production .....	(1,000 Lbs)	3	2,220	California, Wyoming	2,400	24,400
Trout Sold .....	(1,000 Dollars)	10	443	Idaho	40,290	99,969
<b>Miscellaneous</b>						
Farms.....	(Number)	37	18,100	Texas	247,000	2,029,200
Land in Farms.....	(1,000 Acres)	26	10,700	Texas	127,000	899,500
Average Size of Farm .....	(Acres)	12	591	Wyoming	2,437	443

<sup>1</sup> Excludes Durum wheat for Utah.

<sup>2</sup> Inventory January 1, 2019 for cattle & sheep; December 1, 2018 for hogs & chickens.

<sup>3</sup> Cows & heifers that have calved.

<sup>4</sup> Pig crop & egg production for the marketing Year December 1, 2017-November 30, 2018.

## Record Highs & Lows: Acreage, Yield, & Production of Crops – Utah

Units	Record High		Record Low		Record Began
	(Quantity)	(Year)	(Quantity)	(Year)	(Year)
<b>Corn for Grain</b>					
Harvested ..... (1,000 Acres)	34	2012	2	1963, 1966	1882
Yield..... (Bushels/Acre)	182.0	2018	14.7	1889	1882
Production ..(1,000 Bushels)	5,678	2012	85	1934	1882
<b>Corn for Silage</b>					
Harvested ..... (1,000 Acres)	80	1975, 1976	2	1920-1922	1919
Yield..... (Tons/Acre)	25.0	2011, 2017	6.0	1934	1919
Production ..... (1,000 Tons)	1,501	1980	17	1921	1919
<b>Barley</b>					
Harvested ..... (1,000 Acres)	190	1957	8	1898	1882
Yield..... (Bushels/Acre)	89.0	2010	22.0	1882	1882
Production ..(1,000 Bushels)	12,880	1982	242	1882	1882
<b>Oats</b>					
Harvested ..... (1,000 Acres)	82	1910	2	2015	1882
Yield..... (Bushels/Acre)	85.0	2002, 2015	25.0	1882, 1883	1882
Production ..(1,000 Bushels)	3,338	1914	170	2015	1882
<b>All Wheat</b>					
Harvested ..... (1,000 Acres)	444	1953	65	1880, 1881	1879
Yield..... (Bushels/Acre)	59.9	2016	15.4	1919	1879
Production ..(1,000 Bushels)	9,750	1986	1,139	1882	1879
<b>Other Spring Wheat</b>					
Harvested ..... (1,000 Acres)	119	1919, 1920	7	2007	1919
Yield..... (Bushels/Acre)	65.0	1995	18.7	1919	1919
Production ..(1,000 Bushels)	3,366	1953	390	2002	1919
<b>Winter Wheat</b>					
Harvested ..... (1,000 Acres)	342	1953	94	2018	1909
Yield..... (Bushels/Acre)	60.0	2016	12.7	1919	1909
Production ..(1,000 Bushels)	8,100	1986	1,862	1924	1909
<b>All Hay</b>					
Harvested ..... (1,000 Acres)	760	2011	402	1909	1909
Yield..... (Tons/Acre)	3.93	1999	1.77	1924	1909
Production ..... (1,000 Tons)	2,788	1999	679	1934	1909
<b>Alfalfa Hay</b>					
Harvested ..... (1,000 Acres)	580	2011	359	1934	1919
Yield..... (Tons/Acre)	4.40	1993, 1998, 1999	1.67	1934	1919
Production ..... (1,000 Tons)	2,420	1999	600	1934	1919
<b>Other Hay</b>					
Harvested ..... (1,000 Acres)	180	2011	75	1934	1919
Yield..... (Tons/Acre)	2.40	2013	0.85	1934	1919
Production ..... (1,000 Tons)	420	2013	64	1934	1919
<b>Safflower</b>					
Harvested ..... (1,000 Acres)	31	2010	13	2018	2010
Yield..... (Tons/Acre)	1	2014	0	2012	2010
Production ..... (1,000 Tons)	22,940	2010	9,890	2012	2010
<b>Apples</b>					
Utilized Prod. ... (Million Lbs)	63	1987	3	1889	1889
<b>Apricots</b>					
Utilized Prod. .... (Tons)	10,000	1957	0	1972, 1975, 1999	1929
<b>Peaches (Freestone)</b>					
Utilized Prod. .... (Tons)	22,100	1922	750	1972	1899
<b>Sweet Cherries</b>					
Utilized Prod. .... (Tons)	7,700	1968	0	1972	1938
<b>Tart Cherries</b>					
Utilized Prod. ... (Million Lbs)	49.8	2014	1	1972	1938

## Record Highs & Lows: Livestock, Poultry, Honey, & Mink – Utah

Units	Record High		Record Low		Record Began (Year)
	(Quantity)	(Year)	(Quantity)	(Year)	
<b>Cattle &amp; Calves</b>					
Inventory Jan. 1 ..... (1,000 Hd)	950	1983	95	1867	1867
Calf Crop (Annual) ..... (1,000 Hd)	400	2000, 2001	310	1935, 1984	1920
Beef Cows Jan. 1 <sup>1</sup> ..... (1,000 Hd)	374	1983	107	1939	1920
Milk Cows Jan. 1 <sup>1</sup> ..... (1,000 Hd)	126	1945	14	1867	1867
Milk Production (Annual) ..... (Million Lbs)	2,322	2018	412	1924	1924
Cattle on Feed Jan. 1 ..... (1,000 Hd)	81	1966	20	2017, 2018	1942
<b>Hogs &amp; Pigs</b>					
Inventory Dec. 1 <sup>2</sup> ..... (1,000 Hd)	790	2007	4	1866-1868	1866
<b>Sheep &amp; Lambs</b>					
Total Inventory Jan. 1 ..... (1,000 Hd)	2,935	1931	260	2004	1920
Breeding Inventory Jan. 1 ..... (1,000 Hd)	2,775	1931	157	1867	1867
Lamb Crop (Annual) ..... (1,000 Hd)	1,736	1930	220	2010	1924
Mkt Shp & Lmbs Jan. 1 ..... (1,000 Hd)	70	1995	18	1988	1937
<b>Chickens</b>					
Layers Dec. 1 ..... (1,000 Hd)	5,252	2016	1,166	1935	1925
Egg Production <sup>3</sup> ..... (Million Eggs)	1,513	2017	142	1924	1924
<b>Honey</b>					
Production (Annual) ..... (1,000 Lbs)	4,368	1963	780	2010	1913
<b>Mink</b>					
Pelts Produced ..... (1,000 Pelts)	959	2014	283	1973	1969

<sup>1</sup> Cows & heifers two years old & over prior to 1970; cows that have calved beginning in 1970.

<sup>2</sup> January 1, estimates discontinued in 1969. December 1, estimates beginning in 1969.

<sup>3</sup> Annual egg production estimates cover the period December 1, previous year through November 30.



**Census of Agriculture: Producer & Farm Characteristics of Veterans, Young Producers, & New & Beginning Producers - Utah: 2017**

Characteristic	All Producers	Veterans	Young Producers <sup>1</sup>	New & Beginning Producers <sup>2</sup>
Producers .....	32,495	2,554	3,392	9,198
Farms.....	18,409	2,467	2,526	5,888
Land in Farms.....	10,811,604	926,918	1,019,791	2,924,661
Farms by Size:				
1 to 9 Acres .....	6,181	798	908	2,403
10 to 49 Acres .....	5,254	723	639	1,663
50 to 179 Acres .....	3,159	412	438	890
180 to 499 Acres .....	1,768	257	247	459
500 acres or More .....	2,047	277	294	473
Value of Ag Products Sold..... Farms	18,409	2,467	2,526	5,888
..... \$1,000	1,838,610	117,757	315,472	351,859
Value of Crops..... Farms	8,326	1,133	963	2,316
..... \$1,000	560,956	39,394	109,079	126,513
Value of Livestock..... Farms	9,728	1,208	1,565	3,138
..... \$1,000	1,277,653	78,363	206,393	225,347
Farms by Economic Class:				
Less than \$1,000 .....	5,642	823	728	2,053
\$1,000 to \$2,499.....	2,120	292	314	778
\$2,500 to \$4,999.....	2,015	314	183	657
\$5,000 to \$9,999.....	2,198	277	307	716
\$10,000 to \$24,999.....	2,214	264	339	632
\$25,000 to \$49,999.....	1,229	176	163	310
\$50,000 or More .....	2,991	321	492	742
Sex of Producer:				
Male.....	20,759	2,468	2,098	5,583
Female.....	11,736	86	1,294	3,615
Primary Occupation:				
Farming.....	10,711	1,249	952	2,039
Other.....	21,784	1,305	2,440	7,159
Years on Present Farm:				
2 Years or Less .....	1,948	76	712	(N/ A)
3 or 4 Years .....	2,847	142	760	(N/ A)
5 to 9 Years .....	4,951	202	1,192	(N/ A)
10 Years or More.....	22,749	2,134	728	(N/ A)
Years Operating Any Farm:				
5 Year or Less .....	4,934	207	1,705	(N/ A)
6 to 10 Years .....	4,264	206	978	(N/ A)
11 Years or More.....	23,297	2,141	709	(N/ A)
Age Group:				
Under 25 Years .....	538		538	538
25 to 34 Years .....	2,385	54	2,385	1,867
35 to 44 Years .....	4,911	98	(N/ A)	2,510
45 to 54 Years .....	5,498	176	(N/ A)	1,570
55 to 64 Years .....	8,832	301	(N/ A)	1,690
65 to 74 Years .....	6,767	1,034	(N/ A)	772
75 years or Greater .....	3,564	891	(N/ A)	251
Average Age.....	56.3	69.6	(N/ A)	45.3

<sup>1</sup> A young producer is defined as a producer 35 years of age or younger.

<sup>2</sup> This new category includes producers operating on any operation for 10 years or less. They may be on farms with producers who are not beginning producers.

**Census Of Agriculture: Producer Demographics - Utah: 2017**

District & County	Farms	Producer's Age and Race <sup>1</sup>							
		Avg. Age	All	Hispanic	Female	American Indian	Asian	Black	Native Hawaiian
<b>Northern</b>									
Box Elder .....	1,187	55.0	2,152	49	674	7	16	-	-
Cache.....	1,397	56.5	2,479	31	817	3	-	-	6
Davis .....	528	60.7	894	7	363	5	27	-	-
Morgan.....	372	55.4	645	8	228	4	-	-	-
Rich.....	160	55.9	299	-	101	-	1	-	-
Salt Lake.....	592	58.9	1,154	31	415	3	13	-	-
Tooele.....	540	53.9	946	35	386	8	-	2	2
Weber.....	1,260	58.8	2,166	39	774	9	18	-	-
<b>Central</b>									
Juab.....	292	57.5	580	6	168	10	-	-	-
Millard.....	654	56.8	1,127	20	338	2	-	-	-
Sanpete.....	1,003	55.6	1,740	34	567	4	7	-	-
Sevier.....	691	54.9	1,243	22	409	5	1	-	3
Utah.....	2,589	56.0	4,741	71	1,695	-	9	-	15
<b>Eastern</b>									
Carbon.....	309	54.3	564	14	193	2	-	-	-
Daggett.....	52	56.5	96	-	44	2	-	-	1
Duchesne.....	1,063	54.1	1,951	59	739	46	2	-	3
Emery.....	504	54.7	882	5	315	2	-	-	-
Grand.....	102	55.5	195	1	80	1	-	-	-
San Juan.....	823	56.8	1,669	5	821	1,163	-	-	-
Summit.....	626	58.2	1,144	11	387	-	1	-	-
Uintah.....	1,114	54.3	2,004	47	751	90	3	-	2
Wasatch.....	475	59.1	796	7	272	2	-	1	-
<b>Southern</b>									
Beaver.....	272	56.1	502	12	114	-	-	1	-
Garfield.....	286	56.5	529	14	168	-	2	-	-
Iron.....	486	57.6	878	18	274	2	-	2	-
Kane.....	182	53.3	357	2	116	-	-	-	-
Piute.....	104	54.5	194	-	46	-	-	-	-
Washington.....	537	60.1	1,084	8	367	1	-	-	-
Wayne.....	209	54.2	357	2	114	2	-	2	-
Other Counties.....	-	-	-	-	-	-	-	-	-
<b>State Total.....</b>	<b>18,409</b>	<b>56.3</b>	<b>33,368</b>	<b>558</b>	<b>11,736</b>	<b>1,373</b>	<b>100</b>	<b>8</b>	<b>32</b>

- Represents zero.

<sup>1</sup> Demographic information was collected for up to four (4) operators for each operation.

## Number of Farms, Land in Farms, & Average Farm Size – Utah & United States: 2009-2018

[Annual sales of agricultural products of \$1,000 or more.]

Year	Utah			United States		
	Number of Farms	Land in Farms	Average Farm Size	Number of Farms	Land in Farms	Average Farm Size
	(Number)	(1,000 Acres)	(Acres)	(Number)	(1,000 Acres)	(Acres)
2009.....	17,200	11,000	640	2,169,660	917,590	423
2010.....	17,500	11,000	629	2,149,520	915,660	426
2011.....	17,900	11,000	615	2,131,240	914,420	429
2012.....	18,000	11,000	611	2,109,810	914,600	433
2013.....	18,200	11,000	604	2,100,350	911,720	434
2014.....	18,200	10,900	599	2,082,440	908,920	436
2015.....	18,200	10,900	599	2,063,890	905,790	439
2016.....	18,300	10,800	590	2,055,340	902,680	439
2017.....	18,400	10,800	587	2,042,000	900,370	441
2018.....	18,100	10,700	591	2,029,200	899,500	443

## Number of Farms by Economic Sales Class – Utah: 2009-2018

Year	\$1000-\$9,999	\$10,000-\$99,999	\$100,000-\$249,999	\$250,000-\$499,999	\$500,000-\$999,999 <sup>1</sup>	\$1,000,000 & Over <sup>2</sup>	Total
	(Number)	(Number)	(Number)	(Number)	(Number)	(Number)	(Number)
2009 .....	10,500	4,900	850	440	510	(2)	17,200
2010 .....	10,600	5,100	850	420	530	(2)	17,500
2011 .....	10,700	5,200	880	520	600	(2)	17,900
2012 .....	10,650	5,300	930	540	580	(2)	18,000
2013 .....	10,800	5,300	1,000	530	290	280	18,200
2014 .....	10,900	5,300	930	540	250	280	18,200
2015 .....	11,000	5,200	930	520	280	270	18,200
2016 .....	11,200	5,200	850	490	290	270	18,300
2017 .....	11,200	5,200	910	510	310	270	18,400
2018 .....	11,000	5,100	900	520	310	270	18,100

<sup>1</sup> \$500,000 & over before 2013 & \$500,000 - \$999,999 2013 & later.

<sup>2</sup> \$1,000,000 & over economic sales class not published before 2013.

## Farms: Acres by Economic Sales Class – Utah: 2009-2018

Year	\$1000-\$9,999	\$10,000-\$99,999	\$100,000-\$249,999	\$250,000-\$499,999	\$500,000-\$999,999 <sup>1</sup>	\$1,000,000 & Over <sup>2</sup>	Total
	(1,000 Acres)	(1,000 Acres)	(1,000 Acres)	(1,000 Acres)	(1,000 Acres)	(1,000 Acres)	(1,000 Acres)
2009 .....	800	2,200	1,400	1,200	5,400	(2)	11,000
2010 .....	800	2,000	1,300	1,300	5,600	(2)	11,000
2011 .....	700	1,900	1,300	1,400	5,700	(2)	11,000
2012 .....	650	1,750	1,300	1,500	5,800	(2)	11,000
2013 .....	700	1,900	1,400	1,600	3,900	1,500	11,000
2014 .....	700	2,000	1,500	1,900	2,900	1,900	10,900
2015 .....	700	2,000	1,500	2,100	2,200	2,400	10,900
2016 .....	700	2,000	1,400	2,100	1,600	3,000	10,800
2017 .....	600	1,900	1,200	2,100	1,000	4,000	10,800
2018 .....	600	1,900	1,300	2,000	1,000	3,900	10,700

<sup>1</sup> \$500,000 & over before 2013 & \$500,000 - \$999,999 2013 & later.

<sup>2</sup> \$1,000,000 & over economic sales class not published before 2013.

## Farm Income: Cash Receipts by Commodity – Utah: 2013-2018

Utah	2013	2014	2015	2016	2017	2018
	\$1,000	\$1,000	\$1,000	\$1,000	\$1,000	\$1,000
<b>All Commodities .....</b>	2,001,857	2,391,631	1,999,704	1,679,612	1,807,808	1,685,829
<b>Animals &amp; Products .....</b>	1,446,843	1,849,117	1,528,609	1,238,288	1,349,448	1,199,708
Meat Animals.....	768,569	1,035,355	780,986	632,935	671,783	573,774
Cattle & Calves .....	554,600	795,236	628,075	492,592	499,351	449,991
Hogs .....	213,969	240,119	152,911	140,343	172,432	123,783
Dairy Products, Milk.....	413,010	514,527	375,190	336,636	389,754	371,588
Poultry & Eggs.....	153,394	178,289	276,852	173,797	189,071	163,340
Chicken Eggs.....	81,035	107,136	199,491	73,238	102,395	163,332
Farm Chickens.....	7	5	8	10	9	8
Turkeys .....	72,352	71,148	77,353	100,549	86,667	NA
Miscellaneous Animals & Products	111,870	120,946	95,581	94,920	98,840	91,006
Aquaculture.....	617	604	630	633	694	443
Trout.....	617	604	630	633	694	443
Sheep & Lambs .....	NA	NA	NA	NA	NA	NA
Honey .....	2,132	1,730	2,177	1,915	1,741	2,228
Mohair.....	3	3	3	3	3	3
Other Animals & Products.....	105,598	114,540	88,742	88,319	92,442	83,892
All Other Animals & Products .	57,440	59,220	60,970	62,930	65,610	65,070
Mink Pelts.....	48,158	55,320	27,772	25,389	26,832	18,822
Wool.....	3,520	4,068	4,029	4,050	3,960	4,440
<b>Crops .....</b>	555,014	542,514	471,095	441,325	458,360	486,120
Food Grains.....	41,996	42,043	30,677	30,123	31,569	33,283
Wheat .....	41,996	42,043	30,677	30,123	31,569	33,283
Feed Crops.....	316,697	292,487	235,027	192,349	202,055	228,061
Barley.....	7,937	6,890	3,798	2,721	3,382	5,054
Corn .....	33,281	24,387	15,395	14,550	15,771	14,289
Hay .....	274,575	260,471	215,435	174,989	182,902	208,718
Oats .....	905	738	399	89	NA	NA
Oil Crops .....	3,254	4,218	4,015	2,701	2,430	2,431
Safflower.....	3,254	4,218	4,015	2,701	2,430	2,431
Vegetables & Melons.....	8,698	7,067	7,874	NA	NA	NA
Onions .....	8,698	7,067	7,874	NA	NA	NA
Onions, Storage .....	8,698	7,067	7,874	NA	NA	NA
Fruits & Nuts.....	28,080	34,029	22,818	24,503	12,531	9,102
Apples.....	7,607	4,907	4,896	NA	NA	NA
Apricots.....	129	330	7	NA	NA	NA
Cherries .....	14,802	22,711	13,718	17,533	7,600	9,102
Cherries, Sweet.....	2,041	1,217	193	NA	NA	NA
Cherries, Tart .....	12,761	21,494	13,525	17,533	7,600	9,102
Peaches.....	5,542	6,081	4,197	6,970	4,931	NA
All Other Crops.....	156,288	162,670	170,685	191,649	209,776	213,244
Mushrooms .....	10,188	7,830	6,170	4,304	12,771	12,849
Miscellaneous Crops.....	146,100	154,840	164,515	187,345	197,005	200,395

Data as of August 30, 2019.

NA = Data are not available/applicable.

Values are rounded to the nearest thousand.

[Data](http://www.ers.usda.gov) source: USDA Economic Research Service. [www.ers.usda.gov](http://www.ers.usda.gov)

## Farm Income Indicators – Utah: 2013-2018

Utah	2013	2014	2015	2016	2017	2018
	\$1,000	\$1,000	\$1,000	\$1,000	\$1,000	\$1,000
Value of Agricultural Sector Production.....	2,317,994	2,565,816	2,338,823	1,901,721	2,014,952	1,965,875
Value of Crop Production .....	583,083	516,538	468,580	453,653	452,094	462,295
Crop Cash Receipts <sup>2</sup> .....	555,014	542,514	471,095	441,325	458,360	486,120
Value of Animals & Products Production.....	1,467,529	1,795,292	1,639,184	1,216,624	1,299,585	1,245,592
Animals & Products Cash Receipts <sup>2</sup> .....	1,446,843	1,849,117	1,528,609	1,238,288	1,349,448	1,199,708
Net Government Transactions .....	-9,461	9,408	-9,926	-16,451	-11,325	7,624
Intermediate Product Expenses .....	1,170,088	1,348,644	1,154,914	937,534	998,870	925,951
Farm Origin .....	659,618	791,952	680,799	474,687	442,933	414,397
Feed Purchases .....	442,644	520,614	445,718	360,417	336,527	298,915
Livestock & Poultry Purchases .....	159,632	218,528	198,552	72,645	60,066	57,557
Seed Purchases .....	57,341	52,810	36,529	41,626	46,340	57,925
Manufactured Inputs .....	213,925	212,096	180,900	162,521	203,100	202,773
Electricity .....	38,289	36,354	39,821	30,491	48,188	58,334
Fertilizer, Lime, & Soil Conditioners.....	56,366	55,203	53,764	46,249	56,143	53,485
Pesticides .....	18,517	21,239	18,708	19,854	21,979	18,148
Fuel & Oils.....	100,753	99,301	68,607	65,928	76,790	72,806
Other Intermediate Expenses <sup>1</sup> .....	296,545	344,596	293,216	300,326	352,838	308,781
Machine Hire & Custom Work .....	21,477	26,305	16,955	21,867	26,026	21,567
Marketing, Storage, & Transportation.....	31,079	44,477	35,274	42,613	47,553	32,738
Repair & Maintenance <sup>1</sup> .....	98,032	108,250	96,184	83,853	114,061	101,471
Miscellaneous Expenses <sup>1</sup> .....	145,957	165,564	144,803	151,992	165,198	153,004
Total Insurance Premiums <sup>4</sup> .....	27,397	31,571	23,531	23,936	31,988	39,376
Federal Commodity Insurance Premiums ....	1,169	1,366	1,495	1,121	6,376	12,089
Irrigation.....	12,807	14,591	15,652	15,380	16,382	11,926
Contract Labor .....	12,104	19,459	10,511	16,138	21,921	19,100
Gross Value Added.....	1,126,342	1,207,121	1,163,471	931,597	982,836	1,028,448
Capital Consumption <sup>1</sup> .....	254,827	339,010	272,180	294,054	238,180	206,947
Net Value Added.....	871,515	868,111	891,291	637,543	744,656	821,501
Factor Payments to Stakeholders <sup>3</sup> .....	330,234	310,298	281,112	308,531	347,580	350,720
Hired Labor & Non-Cash Employee Compensation	219,316	211,206	177,579	203,934	231,044	230,567
Net Rent Paid to Operator Landlords .....	397	1,925	2,085	1,493	1,109	77
Net Rent Paid to Non-Operator Landlords .....	30,624	12,684	13,733	9,836	7,303	505
Total Interest Expenses <sup>1</sup> .....	79,897	84,482	87,715	93,268	108,124	119,572
Net Farm Income .....	541,281	557,813	610,179	329,011	397,076	470,781

Data as of August 30, 2019

NA = Data are not available/applicable. Values are rounded to the nearest thousand.

<sup>1</sup> Includes expenses associated with operator dwellings.

<sup>2</sup> Share rent income is included in cash receipts.

<sup>3</sup> Prior to 2008 estimates, factor payments to stakeholders only includes net rent paid to non-operator landlords.

<sup>4</sup> Includes federal and private crop and livestock insurance premiums as well as casualty, hail, motor vehicle and all other insurance premiums.

Data Source: USDA Economic Research Service. [www.ers.usda.gov](http://www.ers.usda.gov)

## Agricultural Exports: Estimated Value by Commodity Group – Utah: 2013-2018

Utah	2012	2013	2014	2015	2016	2017
	Million Dollars					
Beef & Veal.....	32.0	50.8	69.7	50.7	49.2	52.8
Pork.....	55.5	54.4	59.7	41.7	43.8	53.1
Hides & Skins .....	18.2	26.4	28.0	19.3	14.7	14.1
Other Livestock Products <sup>1</sup> .....	71.9	49.5	48.8	32.5	29.8	36.3
Dairy Products.....	52.5	68.9	74.0	55.0	45.9	55.3
Broiler Meat.....	0.0	0.0	0.0	0.0	0.0	0.0
Other Poultry Products <sup>2</sup> .....	22.9	25.0	27.4	27.3	24.5	29.6
Vegetables, Fresh .....	1.1	1.1	0.9	0.9	1.0	1.0
Vegetables, Processed.....	2.1	2.0	1.7	1.7	1.9	1.9
Fruits, Fresh .....	7.6	7.0	8.0	5.0	5.0	2.6
Fruits, Processed.....	6.5	6.2	7.2	4.9	4.7	2.3
Tree Nuts.....	0.0	0.0	0.0	0.0	0.0	0.0
Rice .....	0.0	0.0	0.0	0.0	0.0	0.0
Wheat .....	28.9	31.3	25.8	18.3	18.2	21.3
Corn.....	4.7	3.5	4.7	2.7	3.1	3.1
Feeds & Other Feed Grains <sup>3</sup> .....	30.6	41.4	45.5	43.8	30.7	30.2
Grain Products, Processed.....	17.0	19.3	19.4	17.7	14.8	15.4
Soybeans .....	0.0	0.0	0.0	0.0	0.0	0.0
Soybean Meal.....	0.0	0.0	0.0	0.0	0.0	0.0
Vegetable Oils .....	0.4	0.2	0.3	0.4	0.2	0.2
Other Oilseeds & Products <sup>4</sup> .....	2.9	2.7	5.5	3.5	2.8	2.1
Cotton.....	0.0	0.0	0.0	0.0	0.0	0.0
Tobacco.....	0.0	0.0	0.0	0.0	0.0	0.0
Other Plant Products <sup>5</sup> .....	84.6	89.9	94.8	92.4	94.7	96.6
<b>Total Agricultural Exports .....</b>	<b>439.5</b>	<b>479.6</b>	<b>521.5</b>	<b>417.8</b>	<b>385.0</b>	<b>417.8</b>
<b>Total Animal Products .....</b>	<b>253.1</b>	<b>275.0</b>	<b>307.6</b>	<b>226.5</b>	<b>207.8</b>	<b>241.2</b>
<b>Total Plant Products .....</b>	<b>186.4</b>	<b>204.6</b>	<b>213.9</b>	<b>191.3</b>	<b>177.2</b>	<b>176.6</b>

<sup>1</sup> Includes other non-poultry meats, animal fat, live farm animals, and other animal parts.

<sup>2</sup> Includes turkey meat, eggs, and other fowl products.

<sup>3</sup> Includes processed feeds, fodder, barley, oats, rye, and sorghum.

<sup>4</sup> Includes peanuts (oilstock), other oil crops, corn meal, other oilcake and meal, protein substances, bran and residues.

<sup>5</sup> Includes sweeteners and products, other horticulture products, planting seeds, cocoa, coffee, and other processed foods.

Data sources: USDA Economic Research Service; USDA Foreign Agricultural Service (Global Agricultural Trade System).

# ANNUAL CROP SUMMARY

## 2018 UTAH HIGHLIGHTS

The 2018 **corn** for grain crop is estimated at 4.00 million bushels, 14 percent above last year's production of 3.52 million bushels, according to the December 1 Agricultural Survey conducted by the Mountain Regional Field Office of the National Agricultural Statistics Service, USDA. The average yield of 182.0 bushels per acre is 6.0 bushels per acre above the yield achieved last year. Area harvested for grain in 2018, at 22,000 acres, is 2,000 acres above last year. Acreage cut for **corn silage** is estimated at 45,000 acres, down 11,000 acres from last year, with production estimated at 1.04 million tons compared with 1.40 million tons produced last year.

Utah's **barley** seeded area, at 21,000 acres, is down 4,000 acres from last year, and the lowest on record. Harvested area, at 16,000 acres, is down 2,000 acres from 2017. Barley yield, at 86.0 bushels per acre is up 11.0 bushels per acre from last year. Barley production in 2018 is estimated at 1.38 million bushels, up 2 percent from the previous year.

**All wheat** production in Utah, estimated at 5.36 million bushels, is down 14 percent from 2017. All wheat yield is 52.0 bushels per acre, unchanged from a year ago. **Winter wheat** producers seeded 120,000 acres in the fall of 2017 for harvest in 2018, unchanged from the acres seeded for the previous year's crop, but equal to the record low seeded acres. Acreage harvested for grain decreased 14,000 acres from last year to a record low 94,000 acres in 2018. Winter wheat production is estimated at 4.89 million bushels, down 13 percent from last year. Winter wheat yield, at 52.0 bushels per acre, is unchanged from last year. **Spring wheat** seedings, at 10,000 acres, are down 4,000 acres from last year. Acreage harvested totaled 9,000 acres, down from 12,000 acres harvested last year. Spring wheat production is estimated at 468,000 bushels, down 25 percent from last year. Spring wheat yield, at 52.0 bushels per acre, is unchanged from last year.

**All hay** production for 2018 is estimated at 2.20 million tons, down 17 percent from the 2017 total. **Alfalfa hay** production is estimated at 1.85 million tons from 500,000 acres harvested, down 460,000 tons from 2017. Average yield for the 2018 crop is 3.70 tons per acre, 0.50 ton per acre below last year. **All other hay** production totaled 345,000 tons from 150,000 acres harvested, up 19,000 tons from 2017. The average yield of 2.30 tons per acre is up 0.20 ton per acre from last year. New **seedings of alfalfa and alfalfa mixtures** in Utah are estimated at 50,000 acres, down 17 percent from 2017.

As of December 1, producers in Utah were storing 980,000 tons of **all hay**, down 16 percent from the 1.17 million tons stored last year.

Production of **safflower** in 2018 is 10.92 million pounds, compared with 14.85 million pounds in 2017. Planted acres are 15,000, down 2,000 acres from last year. Harvested acres are 13,000, compared with 16,500 acres in 2017. Safflower yields averaged 840 pounds per acre in 2018, down 60 pounds per acre from last year.

**Winter wheat seedings** last fall for the 2019 crop year are estimated at 125,000 acres, up 4 percent from 2018.

### Usual Planting & Harvesting Dates

Corn for Grain	Apr 30-May 20				Oct 10-Oct 30			
Corn for Silage	May 5-May 25				Sep 20-Oct 5			
Grains, Small								
Barley, Spring		Apr 1-Apr 20		Jul 25-Aug 15				
Oats, Spring		Apr 10-May 5		Aug 15-Sep 10				
Wheat, Spring		Apr 1-Apr 20		Aug 5-Aug 25				
Wheat, Winter			Jul 25-Aug 10	Aug 25-Oct 5				
Hay, Alfalfa			Jun 1-Oct 25					
Hay, Other			Jul 10-Aug 25					
	Planting			Harvest				

**Barley: Area Planted & Harvested, Yield, Production, Price, & Value – Utah: 2009-2018**

Year	Area Planted	Area Harvested	Yield per Acre	Production	Price per Bushel <sup>1</sup>	Value of Production
	(1,000 Acres)	(1,000 Acres)	(Bushels)	(1,000 Bushels)	(Dollars)	(1,000 Dollars)
2009.....	40	30	83.0	2,490	2.56	6,374
2010.....	39	27	89.0	2,403	3.43	8,242
2011.....	35	22	81.0	1,782	5.53	9,854
2012.....	44	26	78.0	2,028	5.87	11,904
2013.....	40	30	78.0	2,340	4.17	9,758
2014.....	32	20	83.0	1,660	3.13	5,196
2015.....	27	16	84.0	1,344	2.97	3,992
2016.....	29	19	82.0	1,558	2.36	3,677
2017.....	25	18	75.0	1,350	3.08	4,158
2018.....	21	16	86.0	1,376	3.35	4,610

<sup>1</sup> Marketing year average price.

**Corn for Grain: Area Planted & Harvested, Yield, Production, Price, & Value – Utah: 2009-2018**

Year	Area Planted	Area Harvested	Yield per Acre	Production	Price per Bushel <sup>1</sup>	Value of Production
	(1,000 Acres)	(1,000 Acres)	(Bushels)	(1,000 Bushels)	(Dollars)	(1,000 Dollars)
2009.....	65	17	150.0	2,550	4.52	11,526
2010.....	70	23	178.0	4,094	5.75	23,541
2011.....	85	30	164.0	4,920	6.97	34,292
2012.....	92	34	167.0	5,678	7.59	43,096
2013.....	83	31	170.0	5,270	5.47	28,827
2014.....	75	28	160.0	4,480	4.13	18,502
2015.....	65	17	173.0	2,941	4.68	13,764
2016.....	80	29	175.0	5,075	3.87	19,640
2017.....	80	20	176.0	3,520	3.96	13,939
2018.....	70	22	182.0	4,004	4.50	18,018

<sup>1</sup> Marketing year average price.

**Corn for Silage: Area Harvested, Yield, & Production – Utah: 2009-2018**

Year	Area Harvested	Yield per Acre	Production
	(Acres)	(Tons)	(Tons)
2009.....	47,000	23.0	1,081,000
2010.....	46,000	23.0	1,058,000
2011.....	54,000	25.0	1,350,000
2012.....	56,000	22.0	1,232,000
2013.....	49,000	23.0	1,127,000
2014.....	45,000	22.0	990,000
2015.....	45,000	23.0	1,035,000
2016.....	49,000	24.0	1,176,000
2017.....	56,000	25.0	1,400,000
2018.....	45,000	23.0	1,035,000



**Alfalfa Hay: Area Harvested, Yield, Production, Price, & Value – Utah: 2009-2018**

Year	Area Harvested	Yield per Acre	Production	Price per Ton <sup>1</sup>	Value of Production
	(1,000 Acres)	(Tons)	(1,000 Tons)	(Dollars)	(1,000 Dollars)
2009.....	530	4.20	2,226	102.00	227,052
2010.....	540	4.00	2,160	106.00	228,960
2011.....	580	4.10	2,378	185.00	439,930
2012.....	500	4.10	2,050	190.00	389,500
2013.....	550	4.20	2,310	182.00	420,420
2014.....	520	3.90	2,028	188.00	381,264
2015.....	510	4.10	2,091	162.00	338,742
2016.....	530	4.20	2,226	127.00	282,702
2017.....	550	4.20	2,310	134.00	309,540
2018.....	500	3.70	1,850	170.00	314,500

<sup>1</sup> Marketing year average price.

**Other Hay: Area Harvested, Yield, Production, Price, & Value – Utah: 2009-2018**

Year	Area Harvested	Yield per Acre	Production	Price per Ton <sup>1</sup>	Value of Production
	(1,000 Acres)	(Tons)	(1,000 Tons)	(Dollars)	(1,000 Dollars)
2009.....	160	2.10	336	94.00	31,584
2010.....	160	2.20	352	98.00	34,496
2011.....	180	2.20	396	152.00	60,192
2012.....	160	2.10	336	152.00	51,072
2013.....	175	2.40	420	152.00	63,840
2014.....	160	2.30	368	154.00	56,672
2015.....	160	2.30	368	131.00	48,208
2016.....	160	2.20	352	104.00	36,608
2017.....	155	2.10	326	116.00	37,816
2018.....	150	2.30	345	131.00	45,195

<sup>1</sup> Marketing year average price.

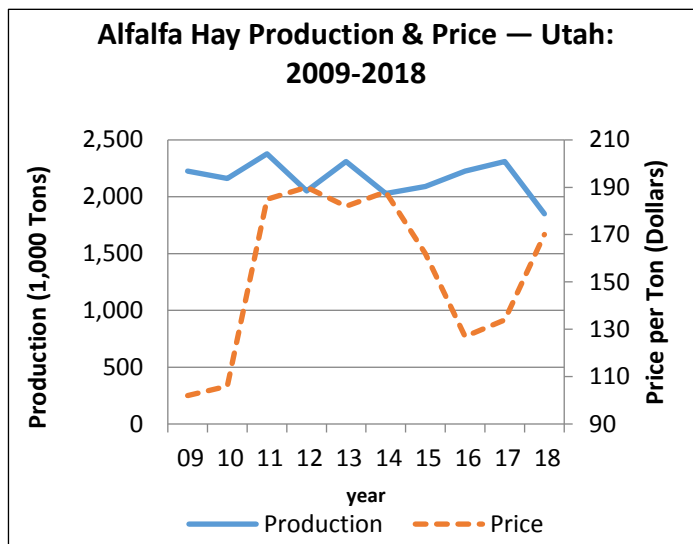
**All Hay: Area Harvested, Yield, Production, Price, & Value – Utah: 2009-2018**

Year	Area Harvested	Yield per Acre	Production	Price per Ton <sup>1</sup>	Value of Production
	(1,000 Acres)	(Tons)	(1,000 Tons)	(Dollars)	(1,000 Dollars)
2009.....	690	3.71	2,562	102.00	258,636
2010.....	700	3.59	2,512	106.00	263,456
2011.....	760	3.65	2,774	185.00	500,122
2012.....	660	3.62	2,386	189.00	440,572
2013.....	725	3.77	2,730	182.00	484,260
2014.....	680	3.52	2,396	188.00	437,936
2015.....	670	3.67	2,459	162.00	386,950
2016.....	690	3.74	2,578	127.00	319,310
2017.....	705	3.74	2,636	134.00	347,356
2018.....	650	3.38	2,195	170.00	359,695

<sup>1</sup> Marketing year average price.

**Hay Stocks: Position & Month – Utah: 2009-2018**

Year	On Farms May 1 (Tons)	On Farms December 1 (Tons)
2009.....	285,000	1,330,000
2010.....	245,000	1,050,000
2011.....	144,000	1,420,000
2012.....	350,000	900,000
2013.....	230,000	1,250,000
2014.....	300,000	1,190,000
2015.....	430,000	1,150,000
2016.....	410,000	1,200,000
2017.....	300,000	1,170,000
2018.....	200,000	980,000



**Oats: Area Planted & Harvested, Yield, Production, Price, & Value – Utah: 2009-2018**

Year	Area Planted (1,000 Acres)	Area Harvested (1,000 Acres)	Yield per Acre (Bushels)	Production (1,000 Bushels)	Price per Bushel <sup>1</sup> (Dollars)	Value of Production (1,000 Dollars)
2009.....	45.0	4.0	81.0	324	2.50	810
2010.....	40.0	4.0	74.0	296	3.60	1,066
2011.....	33.0	3.0	81.0	243	4.35	1,057
2012.....	30.0	3.0	76.0	228	4.40	1,003
2013.....	40.0	5.0	62.0	310	4.42	1,370
2014.....	20.0	3.0	69.0	207	3.75	776
2015.....	20.0	2.0	85.0	170	3.61	614
2016.....	(2)	(2)	(2)	(2)	(2)	(2)
2017.....	(2)	(2)	(2)	(2)	(2)	(2)
2018.....	(2)	(2)	(2)	(2)	(2)	(2)

<sup>1</sup> Marketing year average price  
<sup>2</sup> Estimated discontinued in 2016.

**Safflower: Area Planted & Harvested, Yield, Production, Price, & Value – Utah: 2009-2018**

Year	Area Planted (Acres)	Area Harvested (Acres)	Yield per Acre (Pounds)	Production (1,000 Pounds)	Price per Cwt <sup>1</sup> (Dollars)	Value of Production (1,000 Dollars)
2009.....	(2)	(2)	(2)	(2)	(D)	(D)
2010.....	32,000	31,000	740	22,940	16.00	3,670
2011.....	27,000	26,000	880	22,880	24.40	5,583
2012.....	28,000	23,000	430	9,890	28.90	2,858
2013.....	27,000	26,000	570	14,820	27.30	4,046
2014.....	19,000	18,000	990	17,820	25.60	4,562
2015.....	16,000	15,500	910	14,105	20.70	2,920
2016.....	14,000	13,500	810	10,935	(D)	(D)
2017.....	17,000	16,500	900	14,850	(D)	(D)
2018.....	15,000	13,000	840	10,920	16.20	1,769

(D) Withheld to avoid disclosing data for individual operations.  
<sup>1</sup> Marketing year average price.  
<sup>2</sup> Estimates began in 2010.

### Winter Wheat: Area Planted & Harvested, Yield, Production, Price, & Value – Utah: 2009-2018

Year	Area Planted	Area Harvested	Yield per Acre	Production	Price per Bushel <sup>1</sup>	Value of Production
	(1,000 Acres)	(1,000 Acres)	(Bushels)	(1,000 Bushels)	(Dollars)	(1,000 Dollars)
2009.....	140	135	50.0	6,750	5.70	38,475
2010.....	135	118	48.0	5,664	7.20	40,781
2011.....	130	124	50.0	6,200	7.62	47,244
2012.....	125	109	47.0	5,123	8.97	45,953
2013.....	120	110	44.0	4,840	7.71	37,316
2014.....	120	109	50.0	5,450	6.85	37,333
2015.....	125	119	48.0	5,712	4.77	27,246
2016.....	120	112	60.0	6,720	3.98	26,746
2017.....	120	108	52.0	5,616	5.00	28,080
2018.....	120	94	52.0	4,888	5.90	28,839

<sup>1</sup> Marketing year average price.

### Other Spring Wheat: Area Planted & Harvested, Yield, Production, Price, & Value – Utah: 2009-2018

Year	Area Planted	Area Harvested	Yield per acre	Production	Price per Bushel <sup>1</sup>	Value of Production
	(1,000 Acres)	(1,000 Acres)	(Bushels)	(1,000 Bushels)	(Dollars)	(1,000 Dollars)
2009.....	14	12	44.0	528	8.69	4,588
2010.....	16	13	55.0	715	9.27	6,628
2011.....	21	20	46.0	920	10.90	10,028
2012.....	15	13	40.0	520	11.50	5,980
2013.....	18	14	46.0	644	8.66	5,577
2014.....	10	8	54.0	432	8.58	3,707
2015.....	10	9	55.0	495	7.00	3,465
2016.....	9	8	58.0	464	5.50	2,552
2017.....	14	12	52.0	624	7.00	4,368
2018.....	10	9	52.0	468	5.15	2,410

<sup>1</sup> Marketing year average price.

### All Wheat: Area Planted & Harvested, Yield, Production, Price, & Value – Utah: 2009-2018

Year	Area Planted	Area Harvested	Yield per Acre	Production	Price per Bushel <sup>1</sup>	Value of Production
	(1,000 Acres)	(1,000 Acres)	(Bushels)	(1,000 Bushels)	(Dollars)	(1,000 Dollars)
2009.....	154	147	49.5	7,278	5.92	43,063
2010.....	151	131	48.7	6,379	7.43	47,409
2011.....	151	144	49.4	7,120	8.26	57,272
2012.....	140	122	46.3	5,643	9.59	51,933
2013.....	138	124	44.2	5,484	7.94	42,893
2014.....	130	117	50.3	5,882	7.07	41,040
2015.....	135	128	48.5	6,207	5.18	30,711
2016.....	129	120	59.9	7,184	4.30	29,298
2017.....	134	120	52.0	6,240	5.20	32,448
2018.....	130	103	52.0	5,356	6.45	31,249

<sup>1</sup> Marketing year average price.

**Barley Stocks: Located Off Farm by Quarter – Utah: 2010-2019**

Year <sup>1</sup>	March 1	June 1	September 1	December 1
	(Bushels)	(Bushels)	(Bushels)	(Bushels)
2010.....	147,000	122,000	415,000	287,000
2011.....	117,000	84,000	461,000	344,000
2012.....	184,000	122,000	276,000	(D)
2013.....	(D)	100,000	277,000	505,000
2014.....	(D)	159,000	269,000	396,000
2015.....	293,000	94,000	400,000	363,000
2016.....	(D)	98,000	327,000	(D)
2017.....	255,000	(D)	(D)	343,000
2018.....	211,000	(D)	(D)	(D)
2019.....	(D)	(D)	( <sup>2</sup> )	( <sup>3</sup> )

**Corn Stocks: Located Off Farm by Quarter – Utah: 2010-2019**

Year <sup>1</sup>	March 1	June 1	September 1	December 1
	(Bushels)	(Bushels)	(Bushels)	(Bushels)
2010.....	1,208,000	974,000	599,000	883,000
2011.....	949,000	956,000	830,000	1,010,000
2012.....	786,000	(D)	975,000	930,000
2013.....	566,000	(D)	(D)	861,000
2014.....	544,000	(D)	(D)	737,000
2015.....	420,000	(D)	(D)	670,000
2016.....	(D)	(D)	(D)	694,000
2017.....	(D)	212,000	(D)	557,000
2018.....	367,000	254,000	(D)	680,000
2019.....	448,000	432,000	( <sup>2</sup> )	( <sup>3</sup> )

**Oat Stocks: Located Off Farm by Quarter – Utah: 2010-2019**

Year <sup>1</sup>	March 1	June 1	September 1	December 1
	(Bushels)	(Bushels)	(Bushels)	(Bushels)
2010.....	40,000	20,000	48,000	49,000
2011.....	43,000	23,000	134,000	(D)
2012.....	67,000	61,000	(D)	49,000
2013.....	50,000	6,000	(D)	52,000
2014.....	28,000	(D)	44,000	48,000
2015.....	37,000	22,000	(D)	(D)
2016.....	47,000	24,000	(D)	(D)
2017.....	54,000	16,000	25,000	(D)
2018.....	(D)	15,000	34,000	23,000
2019.....	42,000	13,000	( <sup>2</sup> )	( <sup>3</sup> )

**Wheat Stocks: Located Off Farm by Quarter – Utah: 2010-2019**

Year <sup>1</sup>	March 1	June 1	September 1	December 1
	(Bushels)	(Bushels)	(Bushels)	(Bushels)
2010.....	4,612,000	2,972,000	5,365,000	5,199,000
2011.....	4,779,000	1,133,000	4,699,000	4,304,000
2012.....	4,700,000	3,517,000	4,050,000	4,418,000
2013.....	4,043,000	3,719,000	4,880,000	4,577,000
2014.....	4,149,000	3,746,000	5,150,000	4,786,000
2015.....	4,518,000	4,891,000	6,420,000	5,517,000
2016.....	5,147,000	4,641,000	5,423,000	5,473,000
2017.....	4,118,000	3,843,000	6,299,000	5,723,000
2018.....	4,407,000	3,349,000	5,926,000	5,031,000
2019.....	4,304,000	3,600,000	( <sup>2</sup> )	( <sup>3</sup> )

(D) Withheld to avoid disclosing data for individual operations.

<sup>1</sup> Includes stocks at mills, elevators, terminals, and processors.

<sup>2</sup> Estimates available in the September Grain Stocks Release.

<sup>3</sup> Estimates available in the December Grain Stocks Release.

### Apples: Acreage, Yield, Production, Price, & Value – Utah: 2009-2018

Year	Bearing Acreage	Yield per Acre <sup>1</sup>	Production		Price per Pound	Value of Utilized Production
			Total	Utilized		
	(Acres)	(Pounds)	(Million Pounds)	(Million Pounds)	(Dollars)	(1,000 Dollars)
2009.....	1,400	12,900	18.0	16.0	0.296	4,742
2010.....	1,400	8,570	12.0	11.7	0.250	2,928
2011.....	1,400	13,600	19.0	18.3	0.222	4,054
2012.....	1,400	10,000	14.0	13.8	0.263	3,635
2013.....	1,300	12,700	16.5	15.8	0.481	7,607
2014.....	1,300	17,700	23.0	22.4	0.219	4,907
2015.....	1,200	12,500	15.0	14.9	0.329	4,896
2016.....	(2)	(2)	(2)	(2)	(2)	(2)
2017.....	(2)	(2)	(2)	(2)	(2)	(2)
2018.....	(2)	(2)	(2)	(2)	(2)	(2)

<sup>1</sup> Yield is based on total production, which includes unharvested production and fruit harvested but not sold due to market conditions.

<sup>2</sup> Estimates discontinued in 2016

### Apricot: Acreage, Yield, Production, Price, & Value – Utah: 2010-2018

Year	Bearing Acreage	Yield per Acre <sup>1</sup>	Production		Price per Ton	Value of Utilized Production
			Total	Utilized		
	(Acres)	(Tons)	(Tons)	(Tons)	(Dollars)	(1,000 Dollars)
2009.....	(D)	(D)	320	290	862.00	250
2010.....	(D)	(D)	280	250	432.00	108
2011.....	(D)	(D)	200	170	1,290.00	219
2012.....	(D)	(D)	300	270	919.00	248
2013.....	(D)	(D)	135	128	1,010.00	129
2014.....	120	1.90	228	218	1,510.00	330
2015.....	120	0.06	7	7	(D)	(D)
2016.....	(2)	(2)	(2)	(2)	(2)	(2)
2017.....	(2)	(2)	(2)	(2)	(2)	(2)
2018.....	(2)	(2)	(2)	(2)	(2)	(2)

(D) Withheld to avoid disclosing data for individual operations.

<sup>1</sup> Yield is based on total production.

<sup>2</sup> Estimates discontinued in 2016.

### Sweet Cherry: Acreage, Yield, Production, Price, & Value – Utah: 2010-2018

Year	Bearing Acreage	Yield per Acre <sup>1</sup>	Production		Price per Ton	Value of Utilized Production
			Total	Utilized		
	(Acres)	(Tons)	(Tons)	(Tons)	(Dollars)	(1,000 Dollars)
2009.....	500	3.08	1,540	1,330	1,680.00	2,231
2010.....	500	2.20	1,100	1,080	1,330.00	1,433
2011.....	500	1.60	800	770	1,470.00	1,132
2012.....	500	2.60	1,300	1,280	1,450.00	1,854
2013.....	500	1.66	830	820	2,490.00	2,041
2014.....	400	2.10	840	810	1,500.00	1,217
2015.....	300	0.77	230	226	854.00	193
2016.....	(2)	(2)	(2)	(2)	(2)	(2)
2017.....	(2)	(2)	(2)	(2)	(2)	(2)
2018.....	(2)	(2)	(2)	(2)	(2)	(2)

(NA) Not available.

<sup>1</sup> Yield is based on total production.

<sup>2</sup> Estimates discontinued in 2016

**Tart Cherries: Acreage, Yield, Production, Price, & Value – Utah: 2010-2018**

Year	Bearing Acreage	Yield per Acre <sup>1</sup>	Production		Price per Pound	Value of Utilized Production
			Total	Utilized		
	(Acres)	(Pounds)	(Million Pounds)	(Million Pounds)	(Dollars)	(1,000 Dollars)
2009 .....	3,300	14,200	47.0	34.0	0.270	9,180
2010 .....	3,300	6,970	23.0	22.5	0.270	6,075
2011 .....	3,300	10,600	35.0	34.5	0.290	10,005
2012 .....	3,300	12,100	40.0	40.0	0.510	20,400
2013 .....	3,300	8,120	26.8	26.8	0.476	12,761
2014 .....	3,300	15,500	51.0	49.8	0.432	21,494
2015 .....	3,300	12,300	40.7	40.3	0.336	13,525
2016 .....	3,300	16,000	52.8	49.6	0.353	17,533
2017 .....	3,300	7,880	26.0	25.0	0.304	7,600
2018 .....	3,100	14,500	45.0	41.0	0.222	9,102

<sup>1</sup> Yield is based on total production.

**Peaches: Acreage, Yield, Production, Price, & Value – Utah: 2009-2018**

Year	Bearing Acreage	Yield per Acre <sup>1</sup>	Production		Price per Ton	Value of Utilized Production
			Total	Utilized		
	(Acres)	(Tons)	(Tons)	(Tons)	(Dollars)	(1,000 Dollars)
2009 .....	1,500	3.87	5,800	5,500	1,040.00	5,720
2010 .....	1,500	2.87	4,300	4,240	691.00	2,929
2011 .....	1,500	2.87	4,300	4,100	1,010.00	4,144
2012 .....	1,500	3.53	5,300	5,200	1,080.00	5,633
2013 .....	1,300	4.17	5,421	5,141	1,080.00	5,542
2014 .....	1,300	5.00	6,500	6,200	981.00	6,081
2015 .....	1,300	3.00	3,900	3,880	1,080.00	4,197
2016 .....	1,200	4.30	5,160	4,250	1,640.00	6,970
2017 .....	1,200	2.83	3,400	3,370	1,460.00	4,931
2018 .....	(2)	(2)	(2)	(2)	(2)	(2)

<sup>1</sup> Yield is based on total production.

<sup>2</sup> Estimates discontinued in 2018.

**Operations: All Cattle & Calves – Utah: 2007, 2012, & 2017**

<b>All Cattle &amp; Calves</b>	<b>2007</b>	<b>2012</b>	<b>2017</b>
	(Number)	(Number)	(Number)
Operations with			
1 - 9 Head.....	2,208	3,412	3,177
10 - 19 Head.....	1,081	1,348	1,208
20 - 49 Head.....	1,521	1,604	1,578
50 - 99 Head.....	977	864	754
100 - 199 Head.....	819	600	538
200 - 499 Head.....	595	490	461
500 Head or More.....	380	307	310

Data Source: U.S. Census of Agriculture.

**Operations with Beef Cows – Utah: 2007, 2012, & 2017**

<b>Beef Cows</b>	<b>2007</b>	<b>2012</b>	<b>2017</b>
	(Number)	(Number)	(Number)
Operations with			
1 - 9 Head.....	1,821	2,838	2,780
10 - 19 Head.....	863	1,113	1,055
20 - 49 Head.....	1,172	1,307	1,324
50 - 99 Head.....	768	639	562
100 - 199 Head.....	503	483	385
200 - 499 Head.....	359	321	279
500 Head or More.....	103	126	123

Data Source: U.S. Census of Agriculture.

**Operations With Milk Cows – Utah: 2007, 2012, & 2017**

<b>Milk Cows</b>	<b>2007</b>	<b>2012</b>	<b>2017</b>
	(Number)	(Number)	(Number)
Operations with			
1 - 9 Head.....	174	256	218
10 - 19 Head.....	8	15	8
20 - 49 Head.....	22	31	14
50 - 99 Head.....	53	30	69
100 - 199 Head.....	92	54	53
200 - 499 Head.....	59	45	39
500 Head or More.....	42	46	44

Data Source: U.S. Census of Agriculture.

**Operations With Sheep or Lambs – Utah: 2007, 2012, & 2017**

<b>Sheep and Lambs</b>	<b>2007</b>	<b>2012</b>	<b>2017</b>
	(Number)	(Number)	(Number)
1 - 24 Head.....	1,037	1,196	1,248
25 - 99 Head.....	354	372	428
100 - 299 Head.....	109	79	101
300 - 999 Head.....	48	29	42
1,000 Head or More.....	67	79	79

Data Source: U.S. Census of Agriculture.

**Operations With Hogs & Pigs – Utah 2007, 2012, & 2017**

<b>Hogs &amp; Pigs</b>	<b>2007</b>	<b>2012</b>	<b>2017</b>
	(Number)	(Number)	(Number)
All Operations.....	611	669	561

Data Source: U.S. Census of Agriculture.

### Cattle & Calves: Number by Class & Calf Crop – Utah: January 1, 2015-2019

Class	2015	2016	2017	2018	2019
	(Head)	(Head)	(Head)	(Head)	(Head)
All Cattle & Calves .....	780,000	840,000	820,000	790,000	810,000
Cows & Heifers, That Have Calved .....	420,000	420,000	430,000	435,000	440,000
Beef Cows.....	324,000	328,000	338,000	338,000	340,000
Milk Cows.....	96,000	92,000	92,000	97,000	100,000
Calves, Under 500 Pounds.....	70,000	85,000	83,000	70,000	75,000
Steers, 500 Pounds & Over .....	78,000	90,000	80,000	80,000	85,000
Heifers, 500 Pounds & Over					
Beef Cow Replacements .....	78,000	95,000	85,000	70,000	70,000
Milk Cow Replacements .....	48,000	50,000	55,000	50,000	50,000
Other Heifers .....	64,000	75,000	60,000	60,000	65,000
Bulls, 500 Pounds & Over.....	22,000	25,000	27,000	25,000	25,000
Cattle on Feed .....	24,000	27,000	20,000	20,000	23,000
Calf Crop.....	390,000	380,000	375,000	385,000	(1)
Unit	Value of Inventory <sup>2</sup>				
Value per Head..... (Dollars)	1,750	1,490	1,180	1,270	1,130
Value of Inventory..... (1,000 Dollars)	1,365,000	1,251,600	967,600	1,003,300	915,300

<sup>1</sup> Data available January 2020

<sup>2</sup> Value of all cattle & calves.

### Cattle & Calves: Balance Sheet – Utah: 2014-2018

Inventory Additions & Removals	2014	2015	2016	2017	2018
	(Head)	(Head)	(Head)	(Head)	(Head)
Inventory Beginning of Year .....	810,000	780,000	840,000	820,000	790,000
Calf Crop.....	385,000	390,000	380,000	375,000	385,000
In-Shipments.....	191,000	177,000	100,000	55,000	53,000
Marketings <sup>1</sup>					
Cattle.....	525,000	435,500	426,500	376,000	359,500
Calves.....	45,000	36,000	36,000	45,500	21,500
Farm Slaughter Cattle & Calves <sup>2</sup> .....	2,000	1,500	1,500	2,500	2,000
Deaths					
Cattle.....	14,000	13,000	13,000	13,000	13,000
Calves .....	20,000	21,000	23,000	23,000	22,000
Inventory End of Year .....	780,000	840,000	820,000	790,000	810,000

<sup>1</sup> Includes custom slaughter for use on farms where produced & State out-shipments, but excludes inter-farm sales within the State.

<sup>2</sup> Excludes custom slaughter at commercial establishments.

### Cattle & Calves: Production, Marketings, & Income – Utah: 2014-2018

Unit	2014	2015	2016	2017	2018
Production <sup>1</sup> ..... (1,000 Lbs)	328,000	319,495	320,640	369,361	382,273
Marketings <sup>2</sup> ..... (1,000 Lbs)	533,200	441,500	432,350	438,496	413,048
Value of Production ..... (1,000 Dollars)	482,669	454,189	359,301	415,829	410,511
Value of Sales <sup>3</sup> ..... (1,000 Dollars)	795,236	628,075	492,592	499,351	449,991
Value of Home Consumption..... (1,000 Dollars)	11,447	9,066	7,376	8,090	6,914
Gross Income..... (1,000 Dollars)	806,683	637,141	499,968	507,441	456,905

<sup>1</sup> Includes custom slaughter for use on farms where produced & state out-shipments, but excludes inter-farm sales within the state.

<sup>2</sup> Excludes custom slaughter at commercial establishments. Production & marketings are live weight in pounds.

<sup>3</sup> Excludes inter-farm in-state sales.



## Dairy: Milk Production & Milkfat – Utah: 2014-2018

Unit	2014	2015	2016	2017	2018
Number of Milk Cows on Farms <sup>1</sup> .... (1,000 Hd)	95,000	96,000	91,000	96,000	100,000
Production of Milk & Milkfat <sup>2</sup>					
Milk per Cow					
Milk ..... (Pounds)	22,989	23,125	22,989	23,073	23,220
Milkfat ..... (Pounds)	855	863	874	877	899
Total					
Percentage Milkfat..... (Percent)	3.72	3.73	3.80	3.80	3.87
Milk ..... (Million Pounds)	2,184	2,220	2,092	2,215	2,322
Milkfat ..... (Million Pounds)	81.2	82.8	79.5	84.2	89.9
Milk Price ..... (Dollars/100 Pounds)	23.70	17.00	16.20	17.70	16.10
Value of Production <sup>3</sup> ..... (1,000 Dollars)	517,608	377,400	338,904	392,055	373,842

<sup>1</sup> Average number of cows on farms during year, excluding heifers not yet freshened.

<sup>2</sup> Excludes milk sucked by calves.

<sup>3</sup> Includes value of milk fed to calves.

## Milk & Cream: Marketings, Used on Farm, Income, & Value – Utah: 2014-2018

Unit	2014	2015	2016	2017	2018
Combined Marketings of Milk & Cream					
Milk Sold <sup>1</sup> ..... (Million Pounds)	2,171	2,207	2,078	2,202	2,308
Average Price					
Per 100 Pounds of Milk <sup>2</sup> ..... (Dollars)	23.70	17.00	16.20	17.70	16.10
Per Pound of Milkfat ..... (Dollars)	6.37	4.56	4.26	4.66	4.16
Value of Milk Marketings ..... (1,000 Dollars)	514,527	375,190	336,636	389,754	371,588
Used for Milk, Cream, & Butter by Producers					
Milk Utilized ..... (Million Pounds)	1.00	1.00	1.00	1.00	1.00
Value..... (Dollars)	237,000	170,000	162,000	177,000	161,000
Milk Used on Farm for Feed .. (Million Pounds)	12.00	12.00	13.00	12.00	13.00
Gross Producer Income <sup>3</sup> ..... (1,000 Dollars)	514,764	375,360	336,798	389,931	371,749
Value of Milk Produced <sup>4</sup> ..... (1,000 Dollars)	517,608	377,400	338,904	392,055	373,842

<sup>1</sup> Milk sold to plants & dealers as whole milk & equivalent amounts of milk for cream. Includes milk produced by dealers' own herds & small amounts sold directly to consumers. Includes milk produced by institutional herds.

<sup>2</sup> Average price for marketing year.

<sup>3</sup> Cash receipts from marketings of milk & cream, plus value of milk used for home consumption.

<sup>4</sup> Includes value of milk fed to calves.

## Manufactured Dairy Products – Utah: 2014-2018

Unit	2014	2015	2016	2017	2018
Ice Cream, Regular, Hard..... (1,000 Gallons)	(D)	(D)	27,736	26,283	29,667
Ice Cream, Mix, Lowfat..... (1,000 Gallons)	2,806	1,445	1,349	1,359	1,161

(D) Withheld to avoid disclosing data for individual operations.

## Milk Cows: Production by Month – Utah: 2016-2018

Year & Month	Milk Cows <sup>1</sup>	Milk per Cow <sup>2</sup>	Milk Production <sup>2</sup>	Year & Month	Milk Cows <sup>1</sup>	Milk per Cow <sup>2</sup>	Milk Production <sup>2</sup>
	(1,000 Head)	(Pounds)	(Million Pounds)		(1,000 Head)	(Pounds)	(Million Pounds)
<b>2016</b>							
January .....	90	1,910	172	August.....	97	2,010	195
February.....	90	1,765	159	September .	97	1,910	185
March .....	90	1,945	175	October .....	97	1,930	187
April.....	90	1,925	173	November ..	97	1,880	182
May .....	91	1,990	181	December ..	97	1,935	188
June .....	91	1,960	178				
July.....	90	1,970	177	<b>Annual Total ...</b>	96	23,073	2,215
August.....	90	1,960	176	<b>2018</b>			
September ..	91	1,900	173	January .....	98	1,930	189
October .....	91	1,955	178	February ....	99	1,755	174
November ...	92	1,880	173	March.....	99	1,955	194
December ...	92	1,920	177	April.....	99	1,945	193
<b>Annual Total ....</b>	91	22,989	2,092	May .....	101	2,015	204
<b>2017</b>				June .....	101	1,975	199
January .....	92	1,905	175	July .....	101	2,000	202
February.....	92	1,730	159	August.....	101	2,000	202
March .....	94	1,950	183	September .	100	1,920	192
April.....	94	1,940	182	October .....	100	1,935	194
May .....	96	2,020	194	November ..	100	1,870	187
June .....	96	1,980	190	December ..	100	1,920	192
July.....	97	2,015	195	<b>Annual Total ...</b>	100	23,220	2,322

<sup>1</sup> Includes dry cows; excludes heifers not yet fresh.

<sup>2</sup> Excludes milk sucked by calves.

## Commercial Cattle Slaughter – Utah: Monthly 2017 & 2018

Month	Number Slaughtered		Total Live Weight		Average Live Weight	
	2017	2018	2017	2018	2017	2018
	(Head)	(Head)	(1,000 Pounds)	(1,000 Pounds)	(Pounds)	(Pounds)
January .....	45,500	57,400	60,854	78,558	1,341	1,372
February.....	44,800	46,200	58,929	63,454	1,319	1,376
March.....	49,200	51,000	64,717	69,049	1,317	1,357
April.....	45,000	50,400	57,944	66,590	1,290	1,322
May .....	54,400	56,500	71,553	73,724	1,317	1,308
June .....	57,400	56,500	76,570	74,223	1,336	1,316
July.....	58,000	58,200	78,083	77,196	1,348	1,328
August.....	63,000	63,300	86,540	84,098	1,375	1,330
September .....	54,700	55,900	74,889	77,475	1,372	1,387
October .....	55,900	62,800	77,117	84,465	1,382	1,347
November .....	55,300	58,100	76,297	79,312	1,382	1,368
December .....	50,800	51,800	69,530	70,189	1,370	1,357
<b>Annual Total <sup>1</sup> .....</b>	<b>634,000</b>	<b>668,000</b>	<b>853,025</b>	<b>898,334</b>	<b>1,348</b>	<b>1,347</b>

<sup>1</sup> Totals may not add due to rounding.

## Hogs & Pigs: Total Breeding & Market Inventory, Farrowings, Pigs per Litter, Pig Crop, & Marketings – Utah: December 1, 2009-2018

[Farrowings, Pigs per Litter, Pig Crop, & Marketings for the Year, December 1, previous year, through November 30.]

Year	Inventory			Sows Farrowing	Pigs per Litter	Pig Crop	Marketings <sup>1</sup>
	Total	Breeding	Market				
	(1,000 Head)	(1,000 Head)	(1,000 Head)	(1,000 Head)	(Head)	(1,000 Head)	(1,000 Head)
2009.....	730	75	655	167	9.85	1,645.00	1,554.0
2010.....	740	80	660	164	10.04	1,647.00	1,549.0
2011.....	760	80	680	163	10.17	1,658.00	1,549.0
2012.....	740	80	660	163	10.18	1,660.00	1,593.0
2013.....	700	75	625	167	10.07	1,682.00	1,616.5
2014.....	600	75	525	162	9.44	1,529.00	1,478.5
2015.....	680	75	605	158	9.44	1,491.00	1,229.5
2016.....	700	75	625	157	9.15	1,437.00	1,203.5
2017.....	550	80	470	149	8.92	1,329.00	1,366.5
2018.....	710	80	630	146	9.14	1,334.00	1,148.5

<sup>1</sup> Includes custom slaughter for use on farms where produced and state outshipments, but excludes interfarm sales within the state.

## Hogs & Pigs: Balance Sheet – Utah: 2014-2018

Inventory Additions & Removals	2014	2015	2016	2017	2018
	(Head)	(Head)	(Head)	(Head)	(Head)
Inventory Beginning of Year <sup>1</sup> .....	700,000	600,000	680,000	700,000	550,000
Annual Pig Crop <sup>2</sup> .....	1,529,000	1,491,000	1,437,000	1,329,000	1,334,000
Inshipments .....	1,000	3,000	1,000	83,000	103,000
Marketings <sup>3</sup> .....	1,478,500	1,229,500	1,203,500	1,366,500	1,148,500
Farm Slaughter <sup>4</sup> .....	500	500	500	500	500
Deaths .....	151,000	184,000	214,000	195,000	128,000
Inventory End of Year <sup>5</sup> .....	600,000	680,000	700,000	550,000	710,000

<sup>1</sup> Hogs & pigs inventory is as of December 1, previous year.

<sup>2</sup> From November 30, previous year to December 1.

<sup>3</sup> Includes custom slaughter for use on farm where produced, state out-shipments, but excludes inter-farm sales within the state.

<sup>4</sup> Excludes custom slaughter for farmers at commercial establishments.

<sup>5</sup> Hogs & pigs inventory is as of December 1.

## Market Hogs & Pigs: Inventory by Weight Group – Utah: December 1, 2009-2018

Year	Under 50 Pounds	50-119 Pounds	120-179 Pounds	180 Pounds & over	Total Market Hogs
	(1,000 Head)	(1,000 Head)	(1,000 Head)	(1,000 Head)	(1,000 Head)
2009.....	260	135	130	130	655
2010.....	260	135	130	135	660
2011.....	280	130	130	140	680
2012.....	275	130	125	130	660
2013.....	265	115	120	125	625
2014.....	220	100	110	95	525
2015.....	245	115	125	120	605
2016.....	250	120	130	125	625
2017.....	185	85	100	100	470
2018.....	240	125	135	130	630

## Hogs & Pigs: Production, Marketings, & Income – Utah: 2009-2018

[Dollar values based on data received from U. S. Department of Agriculture's Agricultural Marketing Service]

Year	Production <sup>1</sup>	Marketings <sup>2</sup>	Value of Production <sup>3</sup>	Cash Receipts <sup>3, 4</sup>	Value of Home Consumption	Gross Income
	(1,000 Pounds)	(1,000 Pounds)	(1,000 Dollars)	(1,000 Dollars)	(1,000 Dollars)	(1,000 Dollars)
2009 .....	324,227	326,130	153,912	154,912	228	155,140
2010 .....	303,829	301,380	184,623	183,232	291	183,523
2011 .....	302,804	301,380	209,304	208,266	332	208,598
2012 .....	283,570	286,488	192,252	194,200	245	194,445
2013 .....	287,097	292,010	210,555	213,969	167	214,136
2014 .....	267,167	278,105	231,100	240,119	198	240,317
2015 .....	249,888	240,153	158,757	152,911	145	153,056
2016 .....	238,658	236,125	141,762	140,343	134	140,477
2017 .....	255,582	273,260	159,045	172,432	144	172,576
2018 .....	213,576	200,580	128,244	123,783	136	123,919

<sup>1</sup> Adjustments made for changes in inventory and for inshipments.

<sup>2</sup> Excludes custom slaughter for use on farms where produced and interfarm sales within the State.

<sup>3</sup> Includes allowance for higher average price of State inshipments and outshipments of feeder pigs.

<sup>4</sup> Receipts from marketings and sale of farm slaughter.

## Commercial Hog Slaughter – Utah: Monthly 2017 & 2018

Month	Number Slaughtered		Total Live Weight		Average Live Weight	
	2017	2018	2017	2018	2017	2018
	(Head)	(Head)	(Pounds)	(Pounds)	(Pounds)	(Pounds)
January .....	4,200	5,500	779,000	973,000	186	177
February .....	3,600	4,100	733,000	728,000	203	178
March .....	4,900	4,400	998,000	764,000	204	174
April .....	3,600	4,500	739,000	900,000	205	203
May .....	5,100	5,400	979,000	999,000	193	187
June .....	4,300	4,800	818,000	912,000	192	190
July .....	3,900	4,200	780,000	752,000	199	181
August .....	5,500	5,800	1,089,000	969,000	200	168
September .....	4,200	4,400	845,000	761,000	200	174
October .....	4,800	5,500	874,000	909,000	185	165
November .....	5,300	4,600	891,000	780,000	168	171
December .....	4,300	5,100	738,000	839,000	173	165
<b>Annual Total .....</b>	<b>53,700</b>	<b>58,400</b>	<b>10,263,000</b>	<b>10,286,000</b>	<b>192</b>	<b>177</b>

## Sheep & Lambs: Inventory by Class & Lamb Crop – Utah: January 1, 2015-2019

Class	2015	2016	2017	2018	2019
	(Head)	(Head)	(Head)	(Head)	(Head)
All Sheep & Lambs <sup>1</sup> .....	290,000	285,000	275,000	275,000	290,000
Sheep & Lambs Kept for Breeding					
All Breeding Sheep & Lambs .....	270,000	265,000	255,000	250,000	260,000
Ewes .....	220,000	215,000	205,000	200,000	210,000
Rams .....	10,000	8,000	8,000	8,000	9,000
Replacement Lambs .....	40,000	42,000	42,000	42,000	41,000
Market Sheep & Lambs					
Total Market Sheep & Lambs .....	20,000	20,000	20,000	25,000	30,000
Market Sheep .....	2,000	1,000	1,000	4,000	2,000
Market Lambs .....	18,000	19,000	19,000	21,000	28,000
Market Lambs by Size Group					
Under 65 Pounds .....	2,000	2,000	3,000	3,000	2,000
65 - 84 Pounds .....	2,000	3,000	3,000	4,000	2,000
85 - 105 Pounds .....	5,000	7,000	5,000	5,000	11,000
Over 105 Pounds .....	9,000	7,000	8,000	9,000	13,000
Deaths					
Sheep .....	10,000	11,000	9,000	10,000	(2)
Lambs .....	15,000	15,000	16,000	21,000	(2)
Units	Lamb Crop & Value of Inventory				
Lamb Crop <sup>3</sup> .....	(Head) 230,000	(Head) 230,000	(Head) 230,000	(Head) 235,000	(2)
Lambing Rate <sup>4</sup> .....	(Lambs/100 Ewes) 105	(Lambs/100 Ewes) 107	(Lambs/100 Ewes) 112	(Lambs/100 Ewes) 118	(2)
Value per Head <sup>5</sup> .....	(Dollars) 234	(Dollars) 223	(Dollars) 221	(Dollars) 218	217

<sup>1</sup> All sheep includes new crop lambs. New crop lambs are lambs born after September 30, the previous year.

<sup>2</sup> Data available 2020

<sup>3</sup> Total for the year. Lamb crop defined as lambs marked, docked or branded.

<sup>4</sup> Not strictly a lambing rate. Represents lamb crop expressed as a percent of ewes 1 year old & older on hand at the beginning of the year.

<sup>5</sup> Average value of all sheep, including lambs, at the beginning of the year.

## Wool: Production & Value – Utah: 2014-2018

Units	2014	2015	2016	2017	2018
Sheep & Lambs Shorn <sup>1</sup> .....	(Head) 245,000	(Head) 255,000	(Head) 245,000	(Head) 245,000	(Head) 245,000
Weight per Fleece .....	(Pounds) 9.2	(Pounds) 9.3	(Pounds) 9.2	(Pounds) 9.0	(Pounds) 9.1
Shorn Wool Production .....	(1,000 Pounds) 2,260	(1,000 Pounds) 2,370	(1,000 Pounds) 2,250	(1,000 Pounds) 2,200	(1,000 Pounds) 2,220
Average Price per Pound .....	(Dollars) 1.80	(Dollars) 1.70	(Dollars) 1.80	(Dollars) 1.80	(Dollars) 2.00
Value .....	(1,000 Dollars) 4,068	(1,000 Dollars) 4,029	(1,000 Dollars) 4,050	(1,000 Dollars) 3,960	(1,000 Dollars) 4,440

<sup>1</sup> Includes shearing at commercial feeding yards.

## Sheep & Lamb: Lamb Crop, Farm Slaughter, & Death Loss – Utah: 2010-2019

Year	Ewes 1 Year & Older January 1	Lambs per 100 Ewes January 1	Lamb Crop <sup>1</sup>	Farm Slaughter <sup>2</sup>	Deaths	
					Sheep	Lambs
	(Head)	(Number)	(Head)	(Head)	(Head)	(Head)
2010.....	215,000	102	220,000	6,000	12,000	15,000
2011.....	210,000	112	235,000	6,000	12,000	15,000
2012.....	230,000	102	235,000	6,000	13,000	18,000
2013.....	225,000	100	225,000	6,100	13,000	18,000
2014.....	215,000	109	235,000	6,100	11,000	16,000
2015.....	220,000	105	230,000	6,200	10,000	15,000
2016.....	215,000	107	230,000	6,100	11,000	15,000
2017.....	205,000	112	230,000	6,100	9,000	16,000
2018.....	200,000	118	235,000	5,600	10,000	21,000
2019.....	210,000	(3)	(3)	(3)	(3)	(3)

<sup>1</sup> Lamb crop is defined as lambs born in the eastern states & lambs docked or branded in the western states.

<sup>2</sup> Excludes custom slaughter for farmers at commercial establishments.

<sup>3</sup> Data not available till January, 2020.

### Losses of Lambs Before Docking, By Cause: Utah, 2013-2018

Cause of Loss	2013	2014	2015	2016	2017	2018
<b>Number of Head</b>	<b>Head</b>					
Bear .....	200	100	100	100	200	200
Bobcat .....	200	200	200	300	400	500
Coyote .....	5,800	5,200	5,000	5,500	5,700	6,900
Dog .....	300	100	100	200	200	500
Mountain Lion .....	500	500	500	500	700	800
Foxes .....	200	400	400	500	400	500
Wolves .....	(D)	(D)	(D)	(D)	(D)	(D)
Eagles .....	400	700	700	700	500	600
Ravens .....	100	300	200	300	400	400
Other/Unknown <sup>1</sup> .....	200	100	100	200	100	200
<b>Total Predators .....</b>	<b>7,900</b>	<b>7,600</b>	<b>7,300</b>	<b>8,300</b>	<b>8,600</b>	<b>10,600</b>
Diseases .....	700	1,100	1,100	900	(D)	(D)
Enterotoxaemia .....	200	200	200	300	100	100
Weather Conditions .....	2,800	2,700	2,500	2,600	3,000	3,800
Lambing Complications .....	1,300	1,900	1,800	2,400	2,200	3,000
Old Age .....	NA	NA	NA	NA	NA	NA
On Back .....	(D)	(D)	(D)	(D)	(D)	(D)
Poison .....	100	100	100	100	(D)	(D)
Theft .....	(D)	(D)	(D)	(D)	100	100
Other/Unknown <sup>1</sup> .....	1,500	2,900	3,000	2,400	2,000	2,400
<b>Total Non-Predators .....</b>	<b>6,600</b>	<b>8,900</b>	<b>8,700</b>	<b>8,700</b>	<b>7,400</b>	<b>9,400</b>
<b>Total Losses .....</b>	<b>14,500</b>	<b>16,500</b>	<b>16,000</b>	<b>17,000</b>	<b>16,000</b>	<b>20,000</b>

Foot notes at bottom of page.

### Losses of Lambs After Docking, By Cause: Utah, 2013-2018

Cause of Loss	2013	2014	2015	2016	2017	2018
<b>Number of Head</b>	<b>Head</b>					
Bear .....	1,700	1,700	1,700	1,300	1,600	2,000
Bobcat .....	100	200	200	300	400	400
Coyote .....	9,400	8,500	7,800	7,000	7,700	10,100
Dog .....	500	200	200	300	200	500
Mountain Lion .....	1,700	900	800	2,400	2,800	3,500
Foxes .....	(D)	200	200	200	500	600
Wolves .....	(D)	(D)	(D)	100	200	200
Eagles .....	300	100	100	100	100	100
Ravens .....	(D)	(D)	(D)	(D)	(D)	(D)
Other/Unknown <sup>1</sup> .....	400	300	100	200	100	200
<b>Total Predators .....</b>	<b>14,100</b>	<b>12,100</b>	<b>11,100</b>	<b>11,900</b>	<b>13,600</b>	<b>17,600</b>
Diseases .....	600	100	100	300	(D)	100
Enterotoxaemia .....	100	200	200	500	100	100
Weather Conditions .....	600	400	400	400	900	1,200
Lambing Complications .....	NA	NA	NA	NA	NA	NA
Old Age .....	NA	NA	NA	NA	NA	NA
On Back .....	(D)	(D)	(D)	(D)	(D)	(D)
Poison .....	100	300	300	300	400	500
Theft .....	300	100	100	(D)	100	200
Other/Unknown <sup>1</sup> .....	2,200	2,800	2,800	1,600	900	1,300
<b>Total Non-Predators .....</b>	<b>3,900</b>	<b>3,900</b>	<b>3,900</b>	<b>3,100</b>	<b>2,400</b>	<b>3,400</b>
<b>Total Losses .....</b>	<b>18,000</b>	<b>16,000</b>	<b>15,000</b>	<b>15,000</b>	<b>16,000</b>	<b>21,000</b>

(D) indicates Un-published: i.e. less than 100 head.

<sup>1</sup> Other/Unknown includes Other and Unknown causes combined with Un-published causes. Totals may not add due to rounding.

# Losses of Sheep and Lambs Combined, By Cause: Utah, 2013-2018 <sup>1</sup>

Cause of Loss	2013	2014	2015	2016	2017	2018
<b>Number of Head</b>	<b>Head</b>					
Bear .....	2,700	2,900	2,800	2,500	2,700	3,000
Bobcat .....	300	500	500	600	800	900
Coyote .....	18,400	16,500	15,200	14,900	16,300	20,300
Dog .....	1,200	500	500	800	600	1,500
Mountain Lion.....	2,900	2,100	2,000	4,000	4,300	5,000
Foxes.....	200	700	600	700	900	1,100
Wolves.....	(D)	(D)	(D)	100	300	200
Eagles .....	700	800	800	800	600	700
Ravens .....	100	300	200	300	400	400
Other/Unknown <sup>2</sup> .....	900	600	400	500	400	600
<b>Total Predators .....</b>	<b>27,400</b>	<b>24,900</b>	<b>23,000</b>	<b>25,200</b>	<b>27,300</b>	<b>33,700</b>
Diseases.....	2,100	1,500	1,500	1,700	100	200
Enterotoxaemia.....	500	500	500	1,100	200	300
Weather Conditions.....	5,100	3,300	3,100	3,400	4,400	5,600
Lambing Complications.....	1,900	2,800	2,600	3,300	2,900	3,800
Old Age .....	1,700	1,500	1,400	1,600	1,200	1,400
On Back.....	(D)	100	100	100	300	300
Poison .....	900	1,300	1,200	1,400	1,100	1,200
Theft .....	300	100	100	100	200	400
Other/Unknown <sup>2</sup> .....	5,600	7,500	7,500	5,100	3,300	4,100
<b>Total Non-Predators.....</b>	<b>18,100</b>	<b>18,600</b>	<b>18,000</b>	<b>17,800</b>	<b>13,700</b>	<b>17,300</b>
<b>Total Losses .....</b>	<b>45,500</b>	<b>43,500</b>	<b>41,000</b>	<b>43,000</b>	<b>41,000</b>	<b>51,000</b>
<b>Percent of Total by Cause</b>	<b>Percent</b>					
Bear .....	5.9	6.7	6.8	5.8	6.6	5.9
Bobcat .....	0.7	1.1	1.2	1.4	2.0	1.8
Coyote .....	40.4	37.9	37.1	34.7	39.8	39.8
Dog .....	2.6	1.1	1.2	1.9	1.5	2.9
Mountain Lion.....	6.4	4.8	4.9	9.3	10.5	9.8
Foxes.....	0.4	1.6	1.5	1.6	2.2	2.2
Wolves.....	(D)	(D)	(D)	0.2	0.7	0.4
Eagles .....	1.5	1.8	2.0	1.9	1.5	1.4
Ravens .....	0.2	0.7	0.5	0.7	1.0	0.8
Other/Unknown <sup>2</sup> .....	2.0	1.4	1.0	1.2	1.0	1.2
<b>Total Predators .....</b>	<b>60.2</b>	<b>57.2</b>	<b>56.1</b>	<b>58.6</b>	<b>66.6</b>	<b>66.1</b>
Diseases.....	4.6	3.4	3.7	4.0	0.2	0.4
Enterotoxaemia.....	1.1	1.1	1.2	2.6	0.5	0.6
Weather Conditions.....	11.2	7.6	7.6	7.9	10.7	11.0
Lambing Complications.....	4.2	6.4	6.3	7.7	7.1	7.5
Old Age .....	3.7	3.4	3.4	3.7	2.9	2.8
On Back.....	(D)	0.2	0.2	0.2	0.7	0.6
Poison .....	2.0	3.0	2.9	3.3	2.7	2.4
Theft .....	0.7	0.2	0.2	0.2	0.5	0.8
Other/Unknown <sup>2</sup> .....	12.3	17.2	18.3	11.9	8.0	8.0
<b>Total Non-Predators.....</b>	<b>39.8</b>	<b>42.8</b>	<b>43.9</b>	<b>41.4</b>	<b>33.4</b>	<b>33.9</b>
<b>Total Losses .....</b>	<b>100.0</b>	<b>100.0</b>	<b>100.0</b>	<b>100.0</b>	<b>100.0</b>	<b>100.0</b>
<b>Total Loss as a Percent of Supply <sup>3</sup></b>	<b>8.5</b>	<b>8.2</b>	<b>7.6</b>	<b>8.1</b>	<b>7.9</b>	<b>9.6</b>
<b>Dollar Value of Losses by Cause</b>	<b>1,000 dollars</b>					
Bear .....	434	538	547	461	475	532
Bobcat .....	47	91	94	98	126	146
Coyote .....	2,925	2,988	2,838	2,541	2,727	3,480
Dog .....	194	93	99	145	106	271
Mountain Lion.....	464	388	390	705	721	851
Foxes.....	31	126	108	114	142	179
Wolves.....	(D)	(D)	(D)	16	53	33
Eagles .....	109	142	144	130	95	114
Ravens .....	16	53	36	49	63	65
Other/Unknown <sup>2</sup> .....	146	111	81	86	74	109
<b>Total Predators .....</b>	<b>4,366</b>	<b>4,529</b>	<b>4,336</b>	<b>4,346</b>	<b>4,581</b>	<b>5,779</b>
Diseases.....	341	273	283	301	21	38
Enterotoxaemia.....	82	91	94	194	32	54
Weather Conditions.....	824	590	567	573	721	943
Lambing Complications.....	307	516	502	581	495	662
Old Age .....	294	298	312	340	255	305
On Back.....	(D)	20	22	21	64	65
Poison .....	152	250	250	278	212	234
Theft .....	47	18	18	21	32	71
Other/Unknown <sup>2</sup> .....	906	1,369	1,422	884	542	688
<b>Total Non-Predators.....</b>	<b>2,953</b>	<b>3,424</b>	<b>3,470</b>	<b>3,193</b>	<b>2,373</b>	<b>3,059</b>
<b>Total Losses .....</b>	<b>7,319</b>	<b>7,953</b>	<b>7,805</b>	<b>7,538</b>	<b>6,953</b>	<b>8,838</b>

(D) indicates Un-published: i.e. less than 100 head.

<sup>1</sup> Lamb losses include both before and after docking losses.

<sup>2</sup> Other/Unknown includes Other and Unknown causes combined with Un-published causes.

<sup>3</sup> Supply equals beginning January 1<sup>st</sup> inventory plus lamb crop plus before docking death loss. Totals may not add due to rounding.

## Losses of Sheep, by Cause: Utah, 2013-2018

Cause of Loss	2013	2014	2015	2016	2017	2018
<b>Number of Head</b>	<b>Head</b>					
Bear .....	800	1,100	1,000	1,100	900	800
Bobcat .....	(D)	100	100	(D)	(D)	(D)
Coyote .....	3,200	2,800	2,400	2,400	2,900	3,300
Dog .....	400	200	200	300	200	500
Mountain Lion .....	700	700	700	1,100	800	700
Foxes .....	(D)	100	(D)	(D)	(D)	(D)
Wolves .....	(D)	(D)	(D)	(D)	100	(D)
Eagles .....	(D)	(D)	(D)	(D)	(D)	(D)
Ravens .....	(D)	(D)	(D)	(D)	(D)	(D)
Other/Unknown <sup>1</sup> .....	300	200	200	100	200	200
<b>Total Predators .....</b>	<b>5,400</b>	<b>5,200</b>	<b>4,600</b>	<b>5,000</b>	<b>5,100</b>	<b>5,500</b>
Diseases .....	800	300	300	500	100	100
Enterotoxaemia .....	200	100	100	300	(D)	100
Weather Conditions .....	1,700	200	200	400	500	600
Lambing Complications .....	600	900	800	900	700	800
Old Age .....	1,700	1,500	1,400	1,600	1,200	1,400
On Back .....	(D)	100	100	100	300	300
Poison .....	700	900	800	1,000	700	700
Theft .....	(D)	(D)	(D)	100	(D)	100
Other/Unknown <sup>1</sup> .....	1,900	1,800	1,700	1,100	400	400
<b>Total Non-Predators .....</b>	<b>7,600</b>	<b>5,800</b>	<b>5,400</b>	<b>6,000</b>	<b>3,900</b>	<b>4,500</b>
<b>Total Losses .....</b>	<b>13,000</b>	<b>11,000</b>	<b>10,000</b>	<b>11,000</b>	<b>9,000</b>	<b>10,000</b>
<b>Percent of Total by Cause</b>	<b>Percent</b>					
Bear .....	6.2	10.0	10.0	10.0	10.0	8.0
Bobcat .....	(D)	0.9	1.0	(D)	(D)	(D)
Coyote .....	24.6	25.5	24.0	21.8	32.2	33.0
Dog .....	3.1	1.8	2.0	2.7	2.2	5.0
Mountain Lion .....	5.4	6.4	7.0	10.0	8.9	7.0
Foxes .....	(D)	0.9	(D)	(D)	(D)	(D)
Wolves .....	(D)	(D)	(D)	(D)	1.1	(D)
Eagles .....	(D)	(D)	(D)	(D)	(D)	(D)
Ravens .....	(D)	(D)	(D)	(D)	(D)	(D)
Other/Unknown <sup>1</sup> .....	2.3	1.8	2.0	0.9	2.2	2.0
<b>Total Predators .....</b>	<b>41.5</b>	<b>47.3</b>	<b>46.0</b>	<b>45.5</b>	<b>56.7</b>	<b>55.0</b>
Diseases .....	6.2	2.7	3.0	4.6	1.1	1.0
Enterotoxaemia .....	1.5	0.9	1.0	2.7	(D)	1.0
Weather Conditions .....	13.1	1.8	2.0	3.6	5.6	6.0
Lambing Complications .....	4.6	8.2	8.0	8.2	7.8	8.0
Old Age .....	13.1	13.6	14.0	14.6	13.3	14.0
On Back .....	(D)	0.9	1.0	0.9	3.3	3.0
Poison .....	5.4	8.2	8.0	9.1	7.8	7.0
Theft .....	(D)	(D)	(D)	0.9	(D)	1.0
Other/Unknown <sup>1</sup> .....	14.6	16.4	17.0	10.0	4.4	4.0
<b>Total Non-Predators .....</b>	<b>58.5</b>	<b>52.7</b>	<b>54.0</b>	<b>54.5</b>	<b>43.3</b>	<b>45.0</b>
<b>Total Losses .....</b>	<b>100.0</b>	<b>100.0</b>	<b>100.0</b>	<b>100.0</b>	<b>100.0</b>	<b>100.0</b>
<b>Dollar Value of Losses by Cause</b>	<b>1,000 dollars</b>					
Bear .....	138	218	223	234	191	174
Bobcat .....	(D)	20	22	(D)	(D)	(D)
Coyote .....	554	556	534	510	616	718
Dog .....	69	40	45	64	43	109
Mountain Lion .....	121	139	156	234	170	152
Foxes .....	(D)	20	(D)	(D)	(D)	(D)
Wolves .....	(D)	(D)	(D)	(D)	21	(D)
Eagles .....	(D)	(D)	(D)	(D)	(D)	(D)
Ravens .....	(D)	(D)	(D)	(D)	(D)	(D)
Other/Unknown <sup>1</sup> .....	52	40	45	21	43	44
<b>Total Predators .....</b>	<b>934</b>	<b>1,032</b>	<b>1,024</b>	<b>1,063</b>	<b>1,084</b>	<b>1,196</b>
Diseases .....	138	60	67	106	21	22
Enterotoxaemia .....	35	20	22	64	(D)	22
Weather Conditions .....	294	40	45	85	106	131
Lambing Complications .....	104	179	178	191	149	174
Old Age .....	294	298	312	340	255	305
On Back .....	(D)	20	22	21	64	65
Poison .....	121	179	178	213	149	152
Theft .....	(D)	(D)	(D)	21	(D)	22
Other/Unknown <sup>1</sup> .....	329	357	378	234	85	87
<b>Total Non-Predators .....</b>	<b>1,315</b>	<b>1,152</b>	<b>1,202</b>	<b>1,275</b>	<b>829</b>	<b>979</b>
<b>Total Losses .....</b>	<b>2,249</b>	<b>2,184</b>	<b>2,225</b>	<b>2,338</b>	<b>1,913</b>	<b>2,175</b>

(D) indicates Un-published: i.e. less than 100 head.

<sup>1</sup> Other/Unknown includes Other and Unknown causes combined with Un-published causes.

Totals may not add due to rounding.



# Losses of All Lambs, By Cause: Utah, 2013-2018 <sup>1</sup>

Cause of Loss	2013	2014	2015	2016	2017	2018
<b>Number of Head</b>	<b>Head</b>					
Bear .....	1,900	1,800	1,800	1,400	1,800	2,200
Bobcat .....	300	400	400	600	800	900
Coyote .....	15,200	13,700	12,800	12,500	13,400	17,000
Dog .....	800	300	300	500	400	1,000
Mountain Lion .....	2,200	1,400	1,300	2,900	3,500	4,300
Foxes .....	200	600	600	700	900	1,100
Wolves .....	(D)	(D)	(D)	100	200	200
Eagles .....	700	800	800	800	600	700
Ravens .....	100	300	200	300	400	400
Other/Unknown <sup>2</sup> .....	600	400	200	400	200	400
<b>Total Predators .....</b>	<b>22,000</b>	<b>19,700</b>	<b>18,400</b>	<b>20,200</b>	<b>22,200</b>	<b>28,200</b>
Diseases .....	1,300	1,200	1,200	1,200	(D)	100
Enterotoxaemia .....	300	400	400	800	200	200
Weather Conditions .....	3,400	3,100	2,900	3,000	3,900	5,000
Lambing Complications .....	1,300	1,900	1,800	2,400	2,200	3,000
Old Age .....	NA	NA	NA	NA	NA	NA
On Back .....	(D)	(D)	(D)	(D)	(D)	(D)
Poison .....	200	400	400	400	400	500
Theft .....	300	100	100	(D)	200	300
Other/Unknown <sup>2</sup> .....	3,700	5,700	5,800	4,000	2,900	3,700
<b>Total Non-Predators .....</b>	<b>10,500</b>	<b>12,800</b>	<b>12,600</b>	<b>11,800</b>	<b>9,800</b>	<b>12,800</b>
<b>Total Losses .....</b>	<b>32,500</b>	<b>32,500</b>	<b>31,000</b>	<b>32,000</b>	<b>32,000</b>	<b>41,000</b>
<b>Percent of Total by Cause</b>	<b>Percent</b>					
Bear .....	5.8	5.5	5.8	4.4	5.6	5.4
Bobcat .....	0.9	1.2	1.3	1.9	2.5	2.2
Coyote .....	46.8	42.2	41.3	39.1	41.9	41.5
Dog .....	2.5	0.9	1.0	1.6	1.3	2.4
Mountain Lion .....	6.8	4.3	4.2	9.1	10.9	10.5
Foxes .....	0.6	1.8	1.9	2.2	2.8	2.7
Wolves .....	(D)	(D)	(D)	0.3	0.6	0.5
Eagles .....	2.2	2.5	2.6	2.5	1.9	1.7
Ravens .....	0.3	0.9	0.7	0.9	1.3	1.0
Other/Unknown <sup>2</sup> .....	1.8	1.2	0.7	1.3	0.6	1.0
<b>Total Predators .....</b>	<b>67.7</b>	<b>60.6</b>	<b>59.4</b>	<b>63.1</b>	<b>69.4</b>	<b>68.8</b>
Diseases .....	4.0	3.7	3.9	3.8	(D)	0.2
Enterotoxaemia .....	0.9	1.2	1.3	2.5	0.6	0.5
Weather Conditions .....	10.5	9.5	9.4	9.4	12.2	12.2
Lambing Complications .....	4.0	5.8	5.8	7.5	6.9	7.3
Old Age .....	NA	NA	NA	NA	NA	NA
On Back .....	(D)	(D)	(D)	(D)	(D)	(D)
Poison .....	0.6	1.2	1.3	1.3	1.3	1.2
Theft .....	0.9	0.3	0.3	(D)	0.6	0.7
Other/Unknown <sup>2</sup> .....	11.4	17.5	18.7	12.5	9.1	9.0
<b>Total Non-Predators .....</b>	<b>32.3</b>	<b>39.4</b>	<b>40.6</b>	<b>36.9</b>	<b>30.6</b>	<b>31.2</b>
<b>Total Losses .....</b>	<b>100.0</b>	<b>100.0</b>	<b>100.0</b>	<b>100.0</b>	<b>100.0</b>	<b>100.0</b>
<b>Dollar Value of Losses by Cause</b>	<b>1,000 dollars</b>					
Bear .....	296	320	324	228	284	358
Bobcat .....	47	71	72	98	126	146
Coyote .....	2,371	2,432	2,304	2,031	2,111	2,763
Dog .....	125	53	54	81	63	163
Mountain Lion .....	343	249	234	471	551	699
Foxes .....	31	107	108	114	142	179
Wolves .....	(D)	(D)	(D)	16	32	33
Eagles .....	109	142	144	130	95	114
Ravens .....	16	53	36	49	63	65
Other/Unknown <sup>2</sup> .....	94	71	36	65	32	65
<b>Total Predators .....</b>	<b>3,432</b>	<b>3,497</b>	<b>3,312</b>	<b>3,283</b>	<b>3,497</b>	<b>4,583</b>
Diseases .....	203	213	216	195	(D)	16
Enterotoxaemia .....	47	71	72	130	32	33
Weather Conditions .....	530	550	522	488	614	813
Lambing Complications .....	203	337	324	390	347	488
Old Age .....	NA	NA	NA	NA	NA	NA
On Back .....	(D)	(D)	(D)	(D)	(D)	(D)
Poison .....	31	71	72	65	63	81
Theft .....	47	18	18	(D)	32	49
Other/Unknown <sup>2</sup> .....	577	1,012	1,044	650	457	601
<b>Total Non-Predators .....</b>	<b>1,638</b>	<b>2,272</b>	<b>2,268</b>	<b>1,918</b>	<b>1,544</b>	<b>2,080</b>
<b>Total Losses .....</b>	<b>5,070</b>	<b>5,769</b>	<b>5,580</b>	<b>5,200</b>	<b>5,040</b>	<b>6,663</b>

(D) indicates Un-published: i.e. less than 100 head.

<sup>1</sup> Lamb losses include both before and after docking losses.

<sup>2</sup> Other/Unknown includes Other and Unknown causes combined with Un-published causes. Totals may not add due to rounding.

## Layers & Eggs – Utah: 2014-2018

Unit	2014	2015	2016	2017	2018
Inventory, Production, & Value <sup>1</sup> 2014-2018					
Average Layers.....(1,000 Head)	4,168	4,409	4,571	5,153	4,793
Eggs per Layer <sup>2</sup> .....(Number)	284	284	278	294	293
Total Egg Production ..... (Million Eggs)	1,186	1,252	1,271	1,513	1,403
Value of Eggs Produced ..... (1,000 Dollars)	107,136	199,491	73,238	102,395	163,332
Chicken Inventory <sup>3</sup> & Value, December 1, 2014-2018					
Total Layers .....(1,000 Head)	4,585	4,532	5,252	5,036	4,713
Total Pullets .....(1,000 Head)	923	1,328	1,370	1,178	1,139
Total Chickens					
Total.....(1,000 Head)	5,508	5,860	6,622	6,214	5,852
Value					
Average per Head..... (Dollars)	2.50	3.10	2.40	2.20	2.30
Total Value..... (1,000 Dollars)	13,770	18,166	15,893	13,671	13,460
Chickens: Lost, Sold, & Value of Sales <sup>4</sup> 2014-2018					
Lost <sup>5</sup> .....(1,000 Head)	1,208	863	950	1,598	1,127
Sold for Slaughter					
Chickens Sold.....(1,000 Head)	1,593	2,484	3,003	2,648	2,272
Live Weight ..... (1,000 Pounds)	5,160	8,047	9,940	8,924	7,815
Value of Sales..... (Dollars)	5,200	8,000	9,900	8,900	7,800

<sup>1</sup> Estimates cover the 12 month period, December 1, previous year, through November 30.

<sup>2</sup> Total egg production divided by average number of layers on hand.

<sup>3</sup> Excludes commercial broilers.

<sup>4</sup> Estimates exclude broilers and cover the 12 month period December 1, the previous year through November 30.

<sup>5</sup> Includes rendered, died, destroyed, composted or disappeared for any reason except sold during the 12 month period.

## Turkey: Production & Value – Utah: 2012-2018

Year	Production <sup>1</sup>	Production	Value of Production
	(1,000 Head)	(1,000 Pounds)	(1,000 Dollars)
2009.....	3,200	81,600	40,800
2010.....	4,600	117,300	75,189
2011.....	4,300	105,350	71,849
2012.....	4,100	105,780	76,267
2013.....	4,000	108,800	72,352
2014.....	4,000	96,800	71,148
2015.....	3,800	95,380	77,353
2016.....	4,700	121,730	100,549
2017.....	5,200	134,160	86,667
2018.....	(D)	(D)	(D)

(D) Withheld to avoid disclosing data for individual operations.

<sup>1</sup> Excludes young turkeys lost.

**Mink: Pelts Produced, Females Bred, Average Price, & Value – Utah & United States: 2009-2018**

Year	Utah		United States			
	Pelts Produced	Females Bred	Pelts Produced	Females Bred	Average Marketing Price	Value of Pelts
	(1,000)	(1,000)			(Dollars)	(1,000 Dollars)
2009.....	614	157	2,866,700	674,200	65.10	186,622
2010.....	678	171	2,840,200	670,200	81.90	232,612
2011.....	699	169	3,091,470	706,000	94.30	291,526
2012.....	(1)	179	(1)	770,000	(1)	(1)
2013.....	855	(1)	3,544,610	(1)	56.30	199,562
2014.....	959	201	3,741,150	851,500	57.70	215,864
2015.....	868	214	3,682,960	848,700	32.00	117,855
2016.....	732	190	3,454,410	767,110	34.70	119,868
2017.....	734	173	3,400,080	770,400	36.10	122,743
2018.....	708	168	3,104,960	776,440	26.60	82,592

(NA) Not available.

<sup>1</sup> Due to sequestration the Mink report was suspended.

**Pelts Produced in 2018 & Females Bred for 2019, by Type – Utah & United States:**

Type <sup>1</sup>	Pelts Produced 2018		Females Bred To Produce Kits 2019	
	Utah	United States	Utah	United States
	(Pelts)	(Pelts)	(Number)	(Number)
Black .....	265,000	1,551,670	60,000	344,940
Demi/Wild .....	23,000	105,510	(D)	21,890
Pastel .....	33,000	88,410	(D)	21,130
Sapphire .....	46,000	189,190	(D)	35,700
Blue Iris .....	(D)	151,510	740	25,000
Mahogany .....	270,000	587,800	55,000	120,460
Pearl .....	(D)	107,600	(D)	20,500
Lavender .....	(D)	38,190	(D)	7,540
Violet .....	(D)	48,660	(D)	13,090
White .....	(D)	222,630	(D)	43,690
Other .....	4,700	13,790	(D)	4,110
<b>Total .....</b>	<b>707,600</b>	<b>3,104,960</b>	<b>159,120</b>	<b>658,050</b>

(D) Withheld to avoid disclosing data for individual operations.

<sup>1</sup> Published color classes may not add to the State total to avoid disclosing individual operations.

## Honey: Number of Colonies, Yield, Production, Stocks, Price, & Value – Utah: 2009-2018

[Producers with 5 or more colonies.]

Year	Honey Producing Colonies <sup>1</sup>	Yield per Colony	Production	Stocks December 15 <sup>2</sup>	Average Price per Pound <sup>3</sup>	Value of Production <sup>4</sup>
	(Number)	(Pounds)	(1,000 Pounds)	(Pounds)	(Dollars)	(1,000 Dollars)
2009 .....	26,000	38	988	198,000	1.46	1,442
2010 .....	26,000	30	780	195,000	1.53	1,193
2011 .....	23,000	39	897	170,000	1.75	1,570
2012 .....	25,000	38	950	209,000	1.87	1,777
2013 .....	30,000	34	1,020	92,000	2.09	2,132
2014 .....	29,000	28	812	130,000	2.13	1,730
2015 .....	27,000	42	1,134	147,000	1.92	2,177
2016 .....	31,000	32	992	169,000	1.93	1,915
2017 .....	27,000	31	837	67,000	2.08	1,741
2018 .....	26,000	41	1,066	75,000	2.09	2,228

<sup>1</sup> Honey producing colonies are the maximum number of colonies from which honey was taken during the year. It is possible to take honey from colonies which did not survive the entire year.

<sup>2</sup> Stocks held by producers.

<sup>3</sup> Average price per pound based on expanded sales.

<sup>4</sup> Value of production is equal to production multiplied by average price per pound.

## Trout: Total Value of Fish Sold & Foodsize Sales – Utah: 2009-2018

Year	Total Value of Fish Sold <sup>1</sup>	Foodsize (12 Inches or longer)			
		Number of Fish	Live Weight <sup>2</sup>	Sales	
				Total <sup>3</sup>	Average Price per Pound
	(Dollars)		(Pounds)	(Dollars)	(Dollars)
2009 .....	529,000	99,000	106,000	333,000	3.14
2010 .....	601,000	100,000	116,000	365,000	3.15
2011 .....	516,000	75,000	87,000	307,000	3.53
2012 .....	472,000	90,000	100,000	330,000	3.30
2013 .....	617,000	100,000	151,000	556,000	3.68
2014 .....	604,000	130,000	161,000	531,000	3.30
2015 .....	630,000	90,000	113,000	444,000	3.93
2016 .....	633,000	100,000	128,000	436,000	3.41
2017 .....	694,000	140,000	184,000	550,000	2.99
2018 .....	443,000	75,000	82,000	385,000	4.70

<sup>1</sup> Total sales excluding eggs.

<sup>2</sup> Due to rounding, total number of fish multiplied by the average pounds per unit may not exactly equal total live weight.

<sup>3</sup> Due to rounding, total number or live weight multiplied by average value per unit may not exactly equal total sales.

### Marketing Year Average Prices, by Commodity – Utah: 2010-2018

Commodity	Unit	2010	2011	2012	2013	2014	2015	2016	2017	2018
Wheat, All .....	Bu	7.43	8.26	9.59	7.94	7.07	5.18	4.30	5.20	6.45
Wheat, Winter..	Bu	7.20	7.62	8.97	7.71	6.85	4.77	3.98	5.00	5.90
Wheat, Spring..	Bu	9.27	10.90	11.50	8.66	8.58	7.00	5.50	7.00	5.15
Corn, Grain .....	Bu	5.75	6.97	7.59	5.47	4.13	4.68	3.87	3.96	4.50
Barley, All.....	Bu	3.43	5.53	5.87	4.17	3.13	2.97	2.36	3.08	3.35
Oats .....	Bu	3.60	4.35	4.40	4.42	3.75	3.61	( <sup>1</sup> )	( <sup>1</sup> )	( <sup>1</sup> )
Hay, All (Baled)..	Ton	106.00	185.00	189.00	182.00	188.00	162.00	127.00	134.00	170.00
Alfalfa.....	Ton	106.00	185.00	190.00	182.00	188.00	162.00	127.00	134.00	170.00
Other Hay .....	Ton	98.00	152.00	152.00	152.00	154.00	131.00	104.00	116.00	131.00
Apples, Cmrcl ....	Lbs	0.25	0.22	0.26	0.48	0.22	0.33	( <sup>1</sup> )	( <sup>1</sup> )	( <sup>1</sup> )
Peaches.....	Ton	691.00	1,010.00	1,080.00	1,080.00	981.00	1,080.00	1,640.00	1,460.00	( <sup>1</sup> )
Tart Cherries.....	Lb	0.27	0.29	0.51	0.48	0.43	0.34	0.35	0.30	0.22
Milk Cows .....	Hd	1,160.00	1,290.00	1,300.00	1,290.00	1,740.00	1,930.00	1,730.00	1,700.00	1,450.00
Honey .....	Lb	1.53	1.75	1.87	2.09	2.13	1.92	1.93	2.08	2.09
Trout (12 Inch +)	Lb	3.15	3.53	3.30	3.68	3.30	3.93	3.41	2.99	4.70
Eggs <sup>2</sup> .....	Doz	0.681	0.831	0.878	0.866	0.898	1.084	1.912	0.911	0.812
Milk, All .....	Cwt	16.20	19.60	17.60	19.50	23.70	17.00	16.20	17.70	16.10

(NA) Not available.

<sup>1</sup> No Longer in the estimate program.

<sup>2</sup> Egg Prices are derived from the annual production and annual value of production data from the April Poultry: Price and Value Report.

**Prices Received: Monthly Averages by Selected Commodities – Utah: 2009-2018**

Year	Jan	Feb	Mar	Apr	May	Jun	Jul	Aug	Sep	Oct	Nov	Dec
<b>All Barley <sup>1</sup></b>												
	(Dollars per Bu)	(Dollars per Bu)	(Dollars per Bu)	(Dollars per Bu)	(Dollars per Bu)	(Dollars per Bu)	(Dollars per Bu)	(Dollars per Bu)	(Dollars per Bu)	(Dollars per Bu)	(Dollars per Bu)	(Dollars per Bu)
2009 .....	(S)	(S)	(S)	(S)	3.23	(S)	(S)	2.50	2.25	2.14	2.49	2.72
2010 .....	2.89	3.03	2.95	2.91	2.97	3.21	2.66	2.88	3.05	3.11	3.73	4.35
2011 .....	4.38	4.49	5.00	5.61	(D)	5.38	(D)	5.55	5.80	5.18	5.43	5.53
2012 .....	(D)	5.19	(D)	5.22	(D)	5.15	5.79	5.96	5.91	5.80	5.95	(D)
2013 .....	5.73	(D)	5.68	(D)	5.80	5.76	(D)	4.32	(D)	3.91	(S)	3.84
2014 .....	(D)	3.88	4.08	4.11	4.08	5.18	3.87	3.55	(D)	(D)	(D)	(D)
2015 .....	(D)	(D)	(D)	(D)	(D)	(D)	2.84	(D)	(D)	(D)	(D)	3.56
2016 .....	3.48	(D)	(D)	(D)	(S)	(S)	(1)	(1)	(1)	(1)	(1)	(1)
2017 .....	(1)	(1)	(1)	(1)	(1)	(1)	(1)	(1)	(1)	(1)	(1)	(1)
2018 .....	(1)	(1)	(1)	(1)	(1)	(1)	(1)	(1)	(1)	(1)	(1)	(1)
<b>Milk</b>												
	(Dollars per Cwt)	(Dollars per Cwt)	(Dollars per Cwt)	(Dollars per Cwt)	(Dollars per Cwt)	(Dollars per Cwt)	(Dollars per Cwt)	(Dollars per Cwt)	(Dollars per Cwt)	(Dollars per Cwt)	(Dollars per Cwt)	(Dollars per Cwt)
2009 .....	12.70	10.80	10.90	11.20	10.70	10.90	10.60	11.60	12.40	14.30	14.70	16.00
2010 .....	15.70	15.40	14.90	14.20	15.10	15.60	15.80	16.70	17.40	18.40	18.10	17.00
2011 .....	16.80	18.40	20.10	19.60	19.50	20.50	20.40	21.30	20.60	19.10	19.50	19.00
2012 .....	18.20	16.80	16.50	15.70	15.10	14.60	15.80	17.40	18.80	21.00	21.80	20.60
2013 .....	19.90	19.10	18.60	18.80	19.20	19.10	18.20	18.50	19.50	20.50	21.20	21.50
2014 .....	22.30	24.10	24.10	24.60	24.40	23.00	22.50	23.80	25.00	24.90	23.80	21.50
2015 .....	17.80	16.50	16.40	16.40	16.70	16.90	16.70	16.70	17.00	17.40	18.40	17.80
2016 .....	16.10	15.60	15.00	14.90	14.40	14.50	15.60	16.80	17.70	16.70	17.50	19.10
2017 .....	19.00	18.40	17.90	16.50	16.50	17.10	17.00	17.60	17.80	18.30	18.40	17.60
2018 .....	16.20	15.10	15.70	15.80	16.20	16.10	15.30	15.80	16.80	17.50	16.80	16.30

(D) Withheld to avoid disclosing data for individual operations.

(S) Insufficient number of reports to establish an estimate.

<sup>1</sup> Estimates discontinued in 2016.

**Prices Received: Monthly Averages by Selected Commodities – Utah: 2009-2018 (cont)**

Year	Jan	Feb	Mar	Apr	May	Jun	Jul	Aug	Sep	Oct	Nov	Dec
<b>All Hay (Baled)</b>												
	(Dollars per Ton)	(Dollars per Ton)	(Dollars per Ton)	(Dollars per Ton)	(Dollars per Ton)	(Dollars per Ton)	(Dollars per Ton)	(Dollars per Ton)	(Dollars per Ton)	(Dollars per Ton)	(Dollars per Ton)	(Dollars per Ton)
2009.....	149.00	145.00	144.00	130.00	135.00	105.00	100.00	105.00	105.00	100.00	105.00	100.00
2010.....	90.00	100.00	100.00	95.00	95.00	100.00	100.00	100.00	108.00	108.00	108.00	109.00
2011.....	109.00	110.00	120.00	159.00	161.00	173.00	199.00	183.00	181.00	200.00	187.00	191.00
2012.....	189.00	175.00	173.00	189.00	205.00	198.00	199.00	187.00	187.00	187.00	182.00	192.00
2013.....	183.00	184.00	175.00	182.00	190.00	190.00	194.00	186.00	186.00	175.00	170.00	170.00
2014.....	174.00	180.00	175.00	170.00	170.00	170.00	194.00	204.00	205.00	199.00	185.00	179.00
2015.....	180.00	180.00	170.00	175.00	175.00	175.00	165.00	159.00	160.00	160.00	160.00	160.00
2016.....	160.00	160.00	145.00	145.00	120.00	130.00	130.00	129.00	130.00	130.00	130.00	125.00
2017.....	120.00	120.00	120.00	120.00	120.00	125.00	125.00	125.00	135.00	140.00	140.00	140.00
2018.....	140.00	145.00	150.00	150.00	150.00	160.00	160.00	170.00	175.00	175.00	175.00	180.00
<b>Alfalfa Hay (Baled)</b>												
	(Dollars per Ton)	(Dollars per Ton)	(Dollars per Ton)	(Dollars per Ton)	(Dollars per Ton)	(Dollars per Ton)	(Dollars per Ton)	(Dollars per Ton)	(Dollars per Ton)	(Dollars per Ton)	(Dollars per Ton)	(Dollars per Ton)
2009.....	150.00	145.00	150.00	140.00	135.00	105.00	100.00	105.00	105.00	100.00	105.00	100.00
2010.....	90.00	100.00	100.00	95.00	95.00	100.00	100.00	100.00	108.00	108.00	108.00	109.00
2011.....	109.00	110.00	120.00	160.00	161.00	173.00	200.00	184.00	181.00	200.00	187.00	192.00
2012.....	189.00	175.00	173.00	189.00	205.00	198.00	200.00	188.00	187.00	187.00	182.00	192.00
2013.....	183.00	184.00	175.00	183.00	191.00	190.00	195.00	187.00	187.00	175.00	170.00	170.00
2014.....	175.00	180.00	175.00	170.00	170.00	170.00	195.00	205.00	205.00	200.00	185.00	180.00
2015.....	180.00	180.00	170.00	175.00	175.00	175.00	165.00	160.00	160.00	160.00	160.00	160.00
2016.....	160.00	160.00	145.00	145.00	120.00	130.00	130.00	130.00	130.00	130.00	130.00	125.00
2017.....	120.00	120.00	120.00	120.00	120.00	125.00	125.00	125.00	135.00	140.00	140.00	140.00
2018.....	140.00	145.00	150.00	150.00	150.00	160.00	160.00	170.00	175.00	175.00	175.00	180.00
<b>All Other Hay (Baled)</b>												
	(Dollars per Ton)	(Dollars per Ton)	(Dollars per Ton)	(Dollars per Ton)	(Dollars per Ton)	(Dollars per Ton)	(Dollars per Ton)	(Dollars per Ton)	(Dollars per Ton)	(Dollars per Ton)	(Dollars per Ton)	(Dollars per Ton)
2009.....	135.00	140.00	130.00	115.00	130.00	100.00	90.00	90.00	85.00	100.00	(D)	90.00
2010.....	85.00	100.00	105.00	90.00	85.00	95.00	100.00	85.00	99.00	99.00	99.00	99.00
2011.....	99.00	100.00	106.00	132.00	133.00	141.00	157.00	148.00	159.00	163.00	150.00	154.00
2012.....	152.00	142.00	141.00	152.00	163.00	158.00	160.00	151.00	150.00	147.00	147.00	154.00
2013.....	148.00	148.00	142.00	148.00	153.00	153.00	165.00	155.00	150.00	155.00	145.00	145.00
2014.....	145.00	145.00	140.00	140.00	140.00	140.00	160.00	165.00	165.00	160.00	150.00	145.00
2015.....	145.00	145.00	135.00	140.00	140.00	140.00	135.00	130.00	130.00	130.00	130.00	130.00
2016.....	130.00	130.00	120.00	115.00	100.00	100.00	100.00	100.00	110.00	110.00	110.00	105.00
2017.....	105.00	105.00	105.00	105.00	105.00	110.00	110.00	110.00	120.00	120.00	120.00	120.00
2018.....	120.00	120.00	125.00	125.00	125.00	125.00	125.00	130.00	135.00	135.00	135.00	135.00

(D) Withheld to avoid disclosing data for individual operations.

**Farm Labor: Number Hired, Wage Rates, & Hours Worked – Mountain II Region: July 2018, October 2018, January 2019, & April 2019<sup>1 2</sup>**

	July 2018	October 2018	January 2019	April 2019
Hired Workers				
Hired Workers .....	21,000	20,000	11,000	14,000
Expected to be Employed				
150 Days or More .....	16,000	15,000	10,000	11,000
149 Days or Less .....	5,000	5,000	1,000	3,000
Hours Worked (per Week)				
Hours Worked by Hired Workers .....	45.7	43.4	43.5	43.9
Wage Rates (Dollars per Hours)				
Wage Rates for all Hired Workers .....	13.79	13.87	15.66	14.95
Type of Worker				
Field .....	13.15	12.91	14.93	14.08
Livestock .....	13.01	13.26	14.60	14.28
Field & Livestock Combined .....	13.10	13.05	14.70	14.20

<sup>1</sup> Mountain II Region includes Colorado, Nevada, and Utah.

<sup>2</sup> Excludes Agricultural Service workers.

**Grazing Fees: Annual Average Rates – Utah: 2009-2018**

Year	Per Animal Unit <sup>1</sup> (Dollars per Month)	Cow-Calf (Dollars per Month)	Per Head (Dollars per Month)
2009 .....	13.00	16.30	15.30
2010 .....	13.10	17.00	15.50
2011 .....	13.20	18.60	15.80
2012 .....	13.70	16.70	16.00
2013 .....	14.50	18.50	16.00
2014 .....	15.00	19.00	16.50
2015 .....	16.00	20.00	17.00
2016 .....	16.50	20.00	17.00
2017 .....	16.50	20.00	18.50
2018 .....	17.00	19.00	18.50

<sup>1</sup> Includes animal unit plus cow-calf rate converted to animal unit (AUM) using (1 aum=cow-calf \* 0.833)



**County Estimates: Select Items & Years - Utah**

Item	Unit	State Totals	County					
			Beaver	Box Elder	Cache	Carbon	Daggett	Davis
January 1, 2019								
All Cattle & Calves .....	(Head)	810,000	29,000	83,000	61,000	6,800	3,900	3,700
Beef Cows .....	(Head)	340,000	13,100	36,500	10,200	(D)	2,600	2,200
Milk Cows .....	(Head)	100,000	1,800	8,900	18,600	(D)	-	(D)
Sheep & Lambs .....	(Head)	290,000	500	43,000	2,400	8,500	(D)	500
Cash Receipts 2017 <sup>1</sup>								
Total.....	(1,000 Dollars)	1,768,370	202,463	158,525	146,855	9,308	2,564	37,268
Livestock.....	(1,000 Dollars)	1,353,729	188,899	115,367	122,056	7,694	2,045	5,225
Crops .....	(1,000 Dollars)	414,641	13,564	43,158	24,799	1,614	519	32,043
2017 Census of Agriculture <sup>2</sup>								
Number of Farms <sup>3</sup> .....	(Number)	18,409	272	1,187	1,397	309	52	528
Land in Farms <sup>3</sup> .....	(Acres)	10,811,604	157,030	1,220,773	276,273	230,942	17,671	51,793
Harvested Cropland <sup>4</sup> .....	(Acres)	1,062,894	37,496	154,321	116,796	8,011	5,409	6,316
Irrigated Land <sup>5</sup> .....	(Acres)	1,097,219	40,240	103,836	90,148	9,253	7,168	9,995

See footnote(s) at end of table.

--continued

**County Estimates: Select Items & Years - Utah**

Item	Unit	County						
		Duchesne	Emery	Garfield	Grand	Iron	Juab	Kane
January 1, 2019								
All Cattle & Calves .....	(Head)	58,000	20,000	15,600	5,700	39,000	20,500	9,000
Beef Cows .....	(Head)	27,500	13,200	10,300	3,500	11,900	(D)	(D)
Milk Cows .....	(Head)	3,200	(D)	(D)	(D)	11,500	(D)	-
Sheep & Lambs .....	(Head)	2,400	4,900	600	(D)	40,000	8,300	500
Cash Receipts 2017 <sup>1</sup>								
Total.....	(1,000 Dollars)	62,359	15,202	14,026	3,802	125,226	29,867	5,920
Livestock.....	(1,000 Dollars)	50,446	11,717	11,592	2,281	83,102	21,323	5,392
Crops .....	(1,000 Dollars)	11,913	3,485	2,434	1,521	42,124	8,544	528
2017 Census of Agriculture <sup>2</sup>								
Number of Farms <sup>3</sup> .....	(Number)	1,063	504	286	102	486	292	182
Land in Farms <sup>3</sup> .....	(Acres)	1,057,413	133,699	82,637	231,361	512,940	264,644	128,697
Harvested Cropland <sup>4</sup> .....	(Acres)	59,527	21,370	13,013	9,705	65,182	27,013	3,384
Irrigated Land <sup>5</sup> .....	(Acres)	96,513	32,848	21,194	11,498	64,380	23,731	6,896

See footnote(s) at end of table.

--continued

**County Estimates: Select Items & Years - Utah**

Item	Unit	County							
		Millard	Morgan	Piute	Rich	Salt Lake	San Juan	Sanpete	Sevier
January 1, 2019									
All Cattle & Calves .....	(Head)	60,000	8,400	18,900	42,000	2,200	15,500	60,000	50,000
Beef Cows.....	(Head)	18,800	4,600	6,300	(D)	(D)	9,500	17,100	13,300
Milk Cows.....	(Head)	12,500	800	4,500	-	(D)	(D)	7,600	4,700
Sheep & Lambs .....	(Head)	2,500	15,600	8,800	7,700	700	7,500	63,000	4,600
Cash Receipts 2017 <sup>1</sup>									
Total .....	(1,000 Dollars)	182,837	17,631	19,401	42,373	21,919	13,944	175,640	71,758
Livestock .....	(1,000 Dollars)	133,578	15,383	18,169	39,393	6,759	11,830	161,336	56,875
Crops .....	(1,000 Dollars)	49,259	2,248	1,232	2,980	15,160	2,114	14,304	14,883
2017 Census of Agriculture <sup>2</sup>									
Number of Farms <sup>3</sup> .....	(Number)	654	372	104	160	592	823	1,003	691
Land in Farms <sup>3</sup> .....	(Acres)	481,539	242,666	54,445	374,947	61,965	1,657,212	301,691	108,992
Harvested Cropland <sup>4</sup> .....	(Acres)	112,567	12,636	11,308	41,118	6,003	44,614	57,963	40,129
Irrigated Land <sup>5</sup> .....	(Acres)	122,680	9,023	15,340	42,422	7,430	7,571	76,489	49,440

See footnote(s) at end of table.

--continued

**County Estimates: Select Items & Years - Utah**

Item	Unit	County							
		Summit	Tooele	Uintah	Utah	Wasatch	Washington	Wayne	Weber
January 1, 2019									
All Cattle & Calves .....	(Head)	19,800	21,500	37,500	58,000	7,800	13,400	19,300	20,500
Beef Cows.....	(Head)	9,300	13,100	23,000	17,100	5,000	8,600	9,900	5,800
Milk Cows.....	(Head)	900	(D)	700	15,600	700	(D)	800	4,600
Sheep & Lambs .....	(Head)	14,900	7,800	7,500	10,000	15,700	700	7,400	3,700
Cash Receipts 2017 <sup>1</sup>									
Total .....	(1,000 Dollars)	24,612	46,192	45,490	212,107	12,740	12,962	15,996	39,383
Livestock .....	(1,000 Dollars)	22,537	36,903	31,676	131,467	10,307	8,168	14,022	28,187
Crops .....	(1,000 Dollars)	2,075	9,289	13,814	80,640	2,433	4,794	1,974	11,196
2017 Census of Agriculture <sup>2</sup>									
Number of Farms <sup>3</sup> .....	(Number)	626	540	1,114	2,589	475	537	209	1,260
Land in Farms <sup>3</sup> .....	(Acres)	295,588	348,934	1,824,700	303,795	97,098	155,047	42,751	94,361
Harvested Cropland <sup>4</sup> .....	(Acres)	18,616	16,663	47,696	73,397	7,836	9,231	13,336	22,238
Irrigated Land <sup>5</sup> .....	(Acres)	21,298	21,894	65,306	72,669	11,252	12,984	16,552	27,169

- Represents zero

(D)Withheld to avoid disclosing data for individual operations.

<sup>1</sup> Source: Bureau of Economic Analysis, U.S. Department of Commerce. All dollar estimates are in current dollars (not adjusted for inflation).

<sup>2</sup> These county estimates are only published once every 5 years with the Census of Agriculture.

<sup>3</sup> State level estimates are published annually, number of farms and land in farms for the state of Utah are for 2017

<sup>4</sup> Includes land from which crops were harvested or hay was cut, and land in orchards.

<sup>5</sup> Includes all land watered by any artificial or controlled means, such as sprinklers, furrows or ditches and spreader dikes.

**County Estimates: Alfalfa & Alfalfa Mixtures for Hay, All Cropping Practices – Utah: 2017 & 2018**

District & County <sup>1</sup>	Acres Harvested		Harvested Yield		Production	
	2017	2018	2017	2018	2017	2018
	(Acres)	(Acres)	(Tons/Acre)	(Tons/Acre)	(Tons)	(Tons)
<b>Northern</b>						
Box Elder .....	42,500	(2)	4.20	(2)	179,100	(2)
Cache .....	45,700	(2)	3.85	(2)	175,800	(2)
Davis .....	3,700	(2)	4.20	(2)	15,500	(2)
Morgan .....	8,600	(2)	3.60	(2)	31,000	(2)
Rich .....	14,000	(2)	2.50	(2)	35,000	(2)
Salt Lake .....	2,200	(2)	4.10	(2)	9,000	(2)
Tooele .....	9,300	(2)	3.35	(2)	31,000	(2)
Weber .....	13,500	(2)	4.10	(2)	55,600	(2)
<b>Total .....</b>	<b>139,500</b>	<b>(2)</b>	<b>3.80</b>	<b>(2)</b>	<b>532,000</b>	<b>(2)</b>
<b>Central</b>						
Juab .....	16,800	(2)	4.90	(2)	81,900	(2)
Millard .....	66,900	(2)	5.20	(2)	346,500	(2)
Sanpete .....	39,100	(2)	4.20	(2)	163,300	(2)
Sevier .....	26,600	(2)	4.35	(2)	115,700	(2)
Utah .....	32,100	(2)	3.00	(2)	96,600	(2)
<b>Total .....</b>	<b>181,500</b>	<b>(2)</b>	<b>4.45</b>	<b>(2)</b>	<b>804,000</b>	<b>(2)</b>
<b>Eastern</b>						
Carbon .....	8,100	(2)	3.40	(2)	27,600	(2)
Duchesne .....	32,700	(2)	4.45	(2)	146,000	(2)
Emery .....	20,700	(2)	3.25	(2)	67,300	(2)
Grand .....	(D)	(2)	(D)	(2)	(D)	(2)
San Juan .....	5,700	(2)	1.65	(2)	9,500	(2)
Summit .....	7,600	(2)	2.15	(2)	16,400	(2)
Uintah .....	32,200	(2)	4.00	(2)	129,000	(2)
Wasatch .....	4,900	(2)	3.45	(2)	16,900	(2)
Other Counties .....	10,600	(2)	3.70	(2)	39,300	(2)
<b>Total .....</b>	<b>122,500</b>	<b>(2)</b>	<b>3.70</b>	<b>(2)</b>	<b>452,000</b>	<b>(2)</b>
<b>Southern</b>						
Beaver .....	22,300	(2)	5.25	(2)	117,500	(2)
Garfield .....	11,000	(2)	4.65	(2)	51,400	(2)
Iron .....	45,400	(2)	5.05	(2)	229,000	(2)
Kane .....	2,000	(2)	4.00	(2)	8,000	(2)
Piute .....	7,900	(2)	5.00	(2)	39,500	(2)
Washington .....	5,800	(2)	5.45	(2)	31,600	(2)
Wayne .....	12,100	(2)	3.70	(2)	45,000	(2)
<b>Total .....</b>	<b>106,500</b>	<b>(2)</b>	<b>4.90</b>	<b>(2)</b>	<b>522,000</b>	<b>(2)</b>
<b>State Total .....</b>	<b>550,000</b>	<b>500,000</b>	<b>4.20</b>	<b>3.70</b>	<b>2,310,000</b>	<b>1,850,000</b>

(D) Withheld to avoid disclosing data for individual operations.

<sup>1</sup> Missing counties and counties with missing data are included in the appropriate district's "Other Counties". Districts with missing data are included in "Other Districts".

<sup>2</sup> Estimates discontinued in 2018.

**County Estimates: Cattle – Utah: January 1, 2018 & 2019**

County <sup>1</sup>	All Cattle		Beef Cows		Milk Cows	
	2018 (Number)	2019 (Number)	2018 (Number)	2019 (Number)	2018 (Number)	2019 (Number)
<b>Northern</b>						
Box Elder .....	81,000	83,000	36,500	36,500	8,600	8,900
Cache.....	60,000	61,000	10,200	10,200	18,100	18,600
Davis .....	3,600	3,700	2,200	2,200	(D)	(D)
Morgan.....	8,200	8,400	4,500	4,600	800	800
Rich.....	41,000	42,000	(D)	(D)	-	-
Salt Lake.....	2,100	2,200	(D)	(D)	(D)	(D)
Tooele .....	21,000	21,500	13,000	13,100	(D)	(D)
Weber .....	20,000	20,500	5,700	5,800	4,500	4,600
<b>Central</b>						
Juab .....	20,000	20,500	(D)	(D)	(D)	(D)
Millard .....	59,000	60,000	18,700	18,800	12,100	12,500
Sanpete.....	58,000	60,000	17,000	17,100	7,400	7,600
Sevier.....	49,000	50,000	13,200	13,300	4,500	4,700
Utah .....	56,000	58,000	17,000	17,100	15,200	15,600
<b>Eastern</b>						
Carbon .....	6,600	6,800	(D)	(D)	(D)	(D)
Daggett .....	3,800	3,900	2,500	2,600	-	-
Duchesne.....	56,000	58,000	27,500	27,500	3,100	3,200
Emery.....	19,700	20,000	13,000	13,200	(D)	(D)
Grand.....	5,600	5,700	3,500	3,500	(D)	(D)
San Juan.....	15,100	15,500	9,300	9,500	(D)	(D)
Summit.....	19,300	19,800	9,300	9,300	800	900
Uintah.....	37,000	37,500	23,000	23,000	700	700
Wasatch.....	7,600	7,800	5,000	5,000	700	700
<b>Southern</b>						
Beaver.....	28,000	29,000	13,000	13,100	1,700	1,800
Garfield .....	15,300	15,600	10,200	10,300	(D)	(D)
Iron.....	38,000	39,000	11,800	11,900	11,200	11,500
Kane.....	8,800	9,000	(D)	(D)	(D)	-
Piute.....	18,400	18,900	6,200	6,300	4,400	4,500
Washington.....	13,100	13,400	8,500	8,600	(D)	(D)
Wayne.....	18,800	19,300	9,800	9,900	700	800
Other Counties.....	-	-	47,400	47,600	2,500	2,600
<b>State Total.....</b>	<b>790,000</b>	<b>810,000</b>	<b>338,000</b>	<b>340,000</b>	<b>97,000</b>	<b>100,000</b>

- Represents zero.

(D) Withheld to avoid disclosing data for individual operations.

<sup>1</sup> Counties with Undisclosed data are included in "Other Counties".

**County Estimates: Sheep – Utah: January 1, 2018 & 2019**

County <sup>1</sup>	All Sheep & Lambs 2018 (Head)	All Sheep & Lambs 2019 (Head)
<b>Northern</b>		
Box Elder .....	39,000	43,000
Cache .....	2,000	2,400
Davis.....	500	500
Morgan .....	13,100	15,600
Rich.....	7,800	7,700
Salt Lake.....	800	700
Tooele.....	5,900	7,800
Weber .....	2,600	3,700
<b>Central</b>		
Juab .....	7,200	8,300
Millard .....	2,400	2,500
Sanpete .....	57,000	63,000
Sevier.....	5,300	4,600
Utah .....	10,300	10,000
<b>Eastern</b>		
Carbon .....	11,000	8,500
Daggett .....	(D)	(D)
Duchesne .....	2,000	2,400
Emery .....	3,500	4,900
Grand.....	(D)	(D)
San Juan .....	6,500	7,500
Summit.....	16,700	14,900
Uintah .....	8,900	7,500
Wasatch.....	17,600	15,700
<b>Southern</b>		
Beaver .....	400	500
Garfield .....	600	600
Iron.....	37,000	40,000
Kane .....	700	500
Piute.....	8,200	8,800
Washington.....	700	700
Wayne.....	7,000	7,400
Other Counties .....	300	300
<b>State Total .....</b>	<b>275,000</b>	<b>290,000</b>

(D) Withheld to avoid disclosing data for individual operations.

<sup>1</sup> Counties with undisclosed data are included in "Other Counties".

**County Estimates: Cash Rent per Acre – Utah: 2018 & 2019**

District & County <sup>1, 2, 3</sup>	Rented for Cash					
	Irrigated Cropland		Non-Irrigated Cropland		Pastureland	
	2018	2019	2018	2019	2018	2019
	(Dollars/Acre)	(Dollars/Acre)	(Dollars/Acre)	(Dollars/Acre)	(Dollars/Acre)	(Dollars/Acre)
<b>Northern</b>						
Box Elder .....	-	127.00	-	25.00	-	4.30
Cache .....	-	103.00	-	41.00	-	16.50
Davis .....	-	141.00	-	25.00	-	(D)
Morgan .....	-	75.00	-	27.00	-	1.40
Rich .....	-	37.00	-	(D)	-	3.60
Salt Lake .....	-	98.00	-	(D)	-	7.00
Tooele .....	-	76.50	-	(D)	-	3.00
Weber .....	-	121.00	-	45.00	-	(D)
Other Counties .....	-	-	-	-	-	-
<b>Total .....</b>	-	111.00	-	27.00	-	4.00
<b>Central</b>						
Juab .....	-	92.00	-	11.00	-	8.00
Millard .....	-	160.00	-	14.00	-	4.00
Sanpete .....	-	103.00	-	21.00	-	10.00
Sevier .....	-	92.00	-	19.00	-	14.00
Utah .....	-	106.00	-	36.00	-	3.00
Other Counties .....	-	-	-	-	-	-
<b>Total .....</b>	-	122.00	-	17.00	-	5.20
<b>Eastern</b>						
Carbon .....	-	68.00	-	(D)	-	2.40
Daggett .....	-	(D)	-	(D)	-	(D)
Duchesne .....	-	74.00	-	22.00	-	14.00
Emery .....	-	32.00	-	10.50	-	5.00
Grand .....	-	(D)	-	(D)	-	(D)
San Juan .....	-	53.00	-	(D)	-	4.00
Summit .....	-	60.00	-	27.00	-	4.20
Uintah .....	-	69.00	-	25.00	-	13.50
Wasatch .....	-	62.50	-	15.00	-	3.20
Other Counties .....	-	42.00	-	17.00	-	2.90
<b>Total .....</b>	-	60.00	-	19.00	-	4.70
<b>Southern</b>						
Beaver .....	-	(D)	-	(D)	-	(D)
Garfield .....	-	54.00	-	(D)	-	(D)
Iron .....	-	113.00	-	(D)	-	2.70
Kane .....	-	97.00	-	(D)	-	2.00
Piute .....	-	63.00	-	(D)	-	(D)
Washington .....	-	(D)	-	(D)	-	3.20
Wayne .....	-	145.00	-	(D)	-	10.00
Other Counties .....	-	136.00	-	26.00	-	6.80
<b>Total .....</b>	-	122.00	-	26.00	-	2.90
Other Districts .....	-	-	-	-	-	-
<b>State Total .....</b>	<b>92.00</b>	<b>108.00</b>	-	<b>24.00</b>	-	<b>4.30</b>

(D) Withheld to avoid disclosing data for individual operations.

- County Cash Rents are estimated every other year.

<sup>1</sup> Counties with missing data are included in the appropriate district's "Other Counties".

<sup>2</sup> Districts with missing totals are included in "Other Districts"

<sup>3</sup> Counties not listed may also be included in "Other Counties or "Other Districts".

**Table 1. Southern Utah 110 Head Cow/Calf Budget with Winter Feeding**

GROSS RECEIPTS FROM PRODUCTION								
GROSS RECEIPTS	Weight	Unit	Total Number of Head or Units	2018 Avg. Price/Unit	2019 Proj. Price/Unit	Total Value	Value or Cost/Head	
Steer Calves	550	Lb	49	\$1.55	\$1.58	\$42,537.55	\$386.71	
Heifer Calves	500	Lb	35	\$1.48	\$1.45	\$25,121.25	\$228.38	
Replacement Heifers	500	Lb	-14	\$1.48	\$1.45	-\$10,367.50	-\$94.25	
Cull Cows	1100	Lb	11	\$0.69	\$0.55	\$6,655.00	\$60.50	
Cull Bulls	1400	Lb	1	\$0.55	\$0.55	\$805.00	\$7.32	
<b>Total Receipts</b>						<b>\$75,118.80</b>	<b>\$682.90</b>	
DIRECT COSTS								
		Unit	Total Number of Head or Units	2018 Avg. Price/Unit	2019 Proj. Price/Unit	Total Value	Value or Cost/Head	
VARIABLE COSTS								
Alfalfa Hay (Good Feeder)		Ton	\$41.94	\$110.00	\$150.00	\$6,291.69	\$57.20	
Grass Hay		Ton	\$93.36	\$110.00	\$125.00	\$11,670.07	\$106.09	
Private Meadow Pasture		AUM	\$350.79	\$21.13	\$21.10	\$7,401.69	\$67.29	
State Range		AUM	\$0.00	\$6.28	\$6.28	\$0.00	\$0.00	
Federal Range		AUM	\$709.29	\$1.41	\$1.41	\$1,000.10	\$9.09	
Non Fee Grazing Cost		AUM	\$709.29	\$15.00	\$15.00	\$10,639.38	\$96.72	
Protein		Head	\$110.00	\$25.00	\$12.10	\$1,331.00	\$12.10	
Vitamins & Minerals		Head	\$110.00	\$15.00	\$16.00	\$1,760.00	\$16.00	
Grain Supplements		Lb	\$0.00	\$5.48	\$6.00	\$0.00	\$0.00	
Other Feed		Lb	\$0.00	\$10.54	\$12.00	\$0.00	\$0.00	
Veterinary Medicine		Head	\$110.00	\$31.52	\$20.00	\$2,200.00	\$20.00	
Breeding Fees		Head	\$110.00	\$5.25	\$5.84	\$642.40	\$5.84	
Transportation to and from Pasture		Head	\$110.00	\$9.00	\$9.94	\$1,093.40	\$9.94	
Hired Labor		Head	\$110.00	\$32.00	\$14.07	\$1,547.70	\$14.07	
Supplies		Head	\$110.00	\$18.00	\$32.00	\$3,520.00	\$32.00	
Other Variable and Misc. Costs		Year	\$1.00	\$11.00	\$1,500.00	\$1,500.00	\$13.64	
Marketing Costs		Head	\$110.00	\$32.00	\$32.10	\$3,530.58	\$32.10	
Liability Insurance		Year	\$1.00	\$1,500.00	\$1,500.00	\$1,500.00	\$13.64	
Office, Acct, Legal, & Investment Insurance		Year	\$1.00	\$1,000.00	\$1,000.00	\$1,000.00	\$9.09	
Fuel, Repairs, & Maintenance		Head	\$110.00	\$5,000.00	\$45.00	\$4,950.00	\$45.00	
Interest on Operating Capital			\$23,135.26	\$0.06	\$0.07	\$3,078.90	\$27.99	
<b>Total Variable Costs</b>						<b>\$64,656.93</b>	<b>\$587.79</b>	
INDIRECT COSTS								
Labor (General & Management)		Head	110	\$24.00	\$24.00	\$2,640.00	\$24.00	
Machinery, Buildings & Improvements		Head	110	\$25.07	\$25.00	\$2,750.00	\$25.00	
Taxes & Insurance		Head	110	\$4.63	\$4.50	\$495.00	\$4.50	
General Overhead		Head	110	\$13.55	\$10.00	\$1,100.00	\$10.00	
Interest on Retained Livestock		Head	110	\$25.23	\$15.00	\$1,650.00	\$15.00	
<b>TOTAL INDIRECT COSTS</b>						<b>\$8,635.00</b>	<b>\$78.50</b>	
<b>TOTAL COSTS</b>						<b>\$73,291.93</b>	<b>\$666.29</b>	
<b>Income Over Variable Costs</b>						<b>\$10,461.87</b>	<b>\$95.11</b>	
<b>Income Over Total Costs</b>						<b>\$1,826.87</b>	<b>\$16.61</b>	

**Table 2. Southern Utah 110 Head Cow/Calf Budget with Winter Grazing**

GROSS RECEIPTS FROM PRODUCTION								
GROSS RECEIPTS	Weight	Unit	Total Number of Head or Units	2018 Avg. Price/Unit	2019 Proj. Price/Unit	Total Value	Value or Cost/Head	
Steer Calves	550	Lb	49	\$1.55	\$1.58	\$42,537.55	\$386.71	
Heifer Calves	500	Lb	35	\$1.48	\$1.45	\$25,121.25	\$228.38	
Replacement Heifers	500	Lb	-14	\$1.48	\$1.45	-\$10,367.50	-\$94.25	
Cull Cows	1100	Lb	11	\$0.69	\$0.55	\$6,655.00	\$60.50	
Cull Bulls	1400	Lb	1	\$0.55	\$0.55	\$805.00	\$7.32	
<b>Total Receipts</b>						<b>\$75,118.80</b>	<b>\$682.90</b>	
DIRECT COSTS								
		Unit	Total Number of Head or Units	2018 Avg. Price/Unit	2019 Proj. Price/Unit	Total Value	Value or Cost/Head	
VARIABLE COSTS								
Alfalfa Hay (Good Feeder)		Ton	0.00	\$165.00	\$150.00	\$0.00	\$0.00	
Grass Hay		Ton	0.00	\$145.00	\$125.00	\$0.00	\$0.00	
Private Meadow Pasture		AUM	116	\$21.13	\$21.10	\$2,440.12	\$22.18	
State Range		AUM	108	\$6.28	\$6.28	\$677.84	\$6.16	
Federal Range		AUM	1183	\$1.41	\$1.41	\$1,668.65	\$15.17	
Non Fee Grazing Cost		AUM	1183	\$15.00	\$15.00	\$17,751.58	\$161.38	
Protein		Head	110	\$25.00	\$12.10	\$1,331.00	\$12.10	
Vitamins & Minerals		Head	110	\$15.00	\$16.00	\$1,760.00	\$16.00	
Grain Supplements		Lb	0	\$5.48	\$6.00	\$0.00	\$0.00	
Other Feed		Lb	0	\$10.54	\$12.00	\$0.00	\$0.00	
Veterinary Medicine		Head	110	\$31.52	\$20.00	\$2,200.00	\$20.00	
Breeding Fees		Head	110	\$5.25	\$5.84	\$642.40	\$5.84	
Transportation to and from Pasture		Head	110	\$9.00	\$9.94	\$1,093.40	\$9.94	
Hired Labor		Head	110	\$32.00	\$14.07	\$1,547.70	\$14.07	
Supplies		Head	110	\$18.00	\$32.00	\$3,520.00	\$32.00	
Other Variable and Misc. Costs		Year	1	\$11.00	\$1,500.00	\$1,500.00	\$13.64	
Marketing Costs		Head	110	\$32.00	\$32.10	\$3,530.58	\$32.10	
Liability Insurance		Year	1	\$1,500.00	\$1,500.00	\$1,500.00	\$13.64	
Office, Acct, Legal, & Investment Insurance		Year	1	\$1,000.00	\$1,000.00	\$1,000.00	\$9.09	
Fuel, Repairs, & Maintenance		Head	110	\$5,000.00	\$45.00	\$4,950.00	\$45.00	
Interest on Operating Capital			\$6,519.88	\$0.06	\$0.07	\$2,355.66	\$21.42	
<b>Total Variable Costs</b>						<b>\$49,468.93</b>	<b>\$449.72</b>	
INDIRECT COSTS								
Labor (General & Management)		Head	110	\$24.00	\$24.00	\$2,640.00	\$24.00	
Machinery, Buildings & Improvements		Head	110	\$25.07	\$25.00	\$2,750.00	\$25.00	
Taxes & Insurance		Head	110	\$4.63	\$4.50	\$495.00	\$4.50	
General Overhead		Head	110	\$13.55	\$10.00	\$1,100.00	\$10.00	
Interest on Retained Livestock		Head	110	\$25.23	\$15.00	\$1,650.00	\$15.00	
<b>TOTAL INDIRECT COSTS</b>						<b>\$8,635.00</b>	<b>\$78.50</b>	
<b>TOTAL COSTS</b>						<b>\$58,103.93</b>	<b>\$528.22</b>	
<b>Income Over Variable Costs</b>						<b>\$25,649.87</b>	<b>\$233.18</b>	
<b>Income Over Total Costs</b>						<b>\$17,014.87</b>	<b>\$154.68</b>	



**Table 3. Southern Utah Alfalfa Budget-100 Acres**

<b>GROSS INCOME</b>						
	<b>Unit</b>	<b>Total Units</b>	<b>2018 Avg. Price/Unit</b>	<b>2019 Proj. Price/Unit</b>	<b>Total Cost/Value</b>	<b>Total Cost/Value Per Acre</b>
Alfalfa Hay	Tons	4.25	\$165.00	\$160.00	\$68,000.00	\$680.00
<b>Total Gross Income</b>					<b>\$68,000.00</b>	<b>\$680.00</b>
<b>DIRECT COSTS</b>						
	<b>Unit</b>	<b>Total Units</b>	<b>2018 Avg. Price/Unit</b>	<b>2019 Proj. Price/Unit</b>	<b>Total Cost/Value</b>	<b>Total Cost/Value Per Acre</b>
<b>VARIABLE COSTS</b>						
Insecticide	Acre	100.00	\$20.00	\$25.00	\$2,500.00	\$25.00
Herbicide	Acre	100.00			\$0.00	\$0.00
Fertilizer	Acre	100	\$100.00	\$125.00	\$12,500.00	\$125.00
Irrigation	Annual	1	\$2,500.00	\$2,500.00	\$2,500.00	\$25.00
Labor	Acre	100	\$37.50	\$37.50	\$3,750.00	\$37.50
Operator Labor	Acre	100	\$75.00	\$75.00	\$7,500.00	\$75.00
Fuel & Lube	Annual	1	\$7,500.00	\$6,415.20	\$6,415.20	\$64.15
Maintenance	Annual	1	\$8,000.00	\$6,372.30	\$6,372.30	\$63.72
Miscellaneous	Acre	100	\$5.00	\$5.00	\$500.00	\$5.00
<b>Total Variable Costs</b>					<b>\$42,037.50</b>	<b>\$420.38</b>
<b>INDIRECT COSTS</b>						
<b>Overhead Expenses</b>						
Liability/Crop Insurance			\$250.00	\$250.00	\$250.00	\$2.50
Accounting & Legal			\$250.00	\$250.00	\$250.00	\$2.50
Office & Travel			\$500.00	\$500.00	\$500.00	\$5.00
Annual Investment Insurance			\$900.00	\$786.81	\$786.81	\$7.87
Annual Investment Taxes			\$90.00	\$96.25	\$96.25	\$0.96
Buildings, Improvements, & Equipment			\$6,500.00	\$3,634.52	\$3,634.52	\$36.35
Machinery & Vehicles			\$16,500.00	\$12,042.00	\$12,042.00	\$120.42
<b>TOTAL FIXED COSTS</b>					<b>\$17,559.58</b>	<b>\$175.60</b>
<b>TOTAL COSTS</b>					<b>\$59,597.08</b>	<b>\$595.97</b>
<b>Income Over Variable Costs</b>					<b>\$25,962.50</b>	<b>\$259.63</b>
<b>Income Over Total Costs</b>					<b>\$8,402.92</b>	<b>\$84.03</b>

**Table 4. Northern Utah Roundup Ready Corn Grain Budget-250 acres**

GROSS RECEIPTS FROM PRODUCTION								
GROSS RECEIPTS	Bushels/Acre	Unit	Total Number of Units	Your Price/Unit	2019 Proj. Price/Unit	Total Value	2019 Proj. Value or Cost/Unit	Your Proj. Value or Cost/Unit
Grain Corn	225	bushels	56,250	\$4.00	\$4.00	\$225,000.00	\$4.00	\$225,000.00
<b>Total Receipts</b>						<b>\$225,000</b>	<b>\$4.00</b>	<b>\$225,000</b>
DIRECT COSTS								
	Unit	Total Number of Units	Your Price/Unit	2019 Proj. Price/Unit	Total Value	Value or Cost/Bushel	Your Project Cost/Unit	
Land Preparation								
Plow	1	250	\$29.00	\$29.64	\$7,410.00	\$0.13	\$0.13	
Disc	2	500	\$16.00	\$15.56	\$7,780.00	\$0.14	\$0.14	
Land Plane	1	250	\$9.00	\$9.10	\$2,275.00	\$0.04	\$0.04	
Harrow/Cultipack	1	250	\$15.00	\$14.46	\$3,615.00	\$0.06	\$0.07	
Cultivation	2	500	\$14.00	\$14.41	\$7,205.00	\$0.13	\$0.12	
Drill/Plant	1	250	\$17.00	\$16.75	\$4,187.50	\$0.07	\$0.08	
Seed	27	6,750	\$4.40	\$4.40	\$29,700.00	\$0.53	\$0.53	
Fertilizer	1	250	\$145.00	\$143.00	\$35,750.00	\$0.64	\$0.64	
Application	2	500	\$8.50	\$8.50	\$4,250.00	\$0.08	\$0.08	
Herbicide	1	250	\$18.00	\$17.63	\$4,407.50	\$0.08	\$0.08	
Application	1	250	\$8.50	\$8.50	\$2,125.00	\$0.04	\$0.04	
Irrigation Water Assessment	1	250	\$20.00	\$20.00	\$5,000.00	\$0.09	\$0.09	
Crop Insurance	1	250	\$30.00	\$30.00	\$7,500.00	\$0.13	\$0.13	
Seasonal Labor	1	250	\$48.57	\$48.57	\$12,142.50	\$0.22	\$0.22	
Combine/Harvest	1	250	\$37.11	\$37.11	\$9,277.50	\$0.16	\$0.16	
Trucking	225	56250	\$0.35	\$0.35	\$19,687.50	\$0.35	\$0.35	
Drying	225	56250	\$0.30	\$0.30	\$16,875.00	\$0.30	\$0.30	
Storage	225	56250	\$0.20	\$0.20	\$11,250.00	\$0.20	\$0.20	
Interest on Operating Capital	% Rate	\$418.48	7.00%	6.50%	\$6,800.30	\$0.12	\$0.13	
<b>Total Variable Costs</b>					<b>\$197,238</b>	<b>\$3.51</b>	<b>\$3.53</b>	
INDIRECT COSTS								
General Overhead			\$20.00	\$20.00	\$5,000.00	\$0.09	\$0.09	
Real Estate Taxes			\$9.15	\$9.15	\$2,287.50	\$0.04	\$0.04	
Real Estate Opportunity Cost			\$125.00	\$125.00	\$31,250.00	\$0.56	\$0.56	
<b>TOTAL FIXED COSTS</b>					<b>\$38,538</b>	<b>\$0.69</b>	<b>\$0.69</b>	
<b>TOTAL COSTS</b>					<b>\$235,775</b>	<b>\$4.19</b>	<b>\$4.21</b>	
<b>Income Over Variable Costs</b>					<b>\$27,762</b>	<b>\$0.49</b>	<b>\$224,996.47</b>	
<b>Income Over Total Costs</b>					<b>-\$10,775</b>	<b>-\$0.19</b>	<b>\$224,995.79</b>	

**Table 5. Northern Utah Alfalfa Budget-100 acres**

GROSS RECEIPTS FROM PRODUCTION								
GROSS RECEIPTS	Tons	Unit	Total Number of Units	Your Price/Unit	2019 Proj. Price/Unit	Total Value	Value or Cost/Acre	2019 Proj. Value or Cost/Acre
Premium Alfalfa	1.5	Acre	100	\$185	\$185	\$ 27,750.00	\$ 277.50	\$ 277.50
Medium-Quality Alfalfa	2.5	Acre	100	\$150	\$150	\$ 37,500.00	\$ 375.00	\$ 375.00
Low-Quality Alfalfa	1	Acre	100	\$140	\$140	\$ 14,000.00	\$ 140.00	\$ 140.00
<b>Total Receipts</b>						<b>\$ 79,250.00</b>	<b>\$ 792.50</b>	<b>\$ 792.50</b>
DIRECT COSTS								
		Unit	Total Number of Units	Your Price/Unit	2019 Proj. Price/Unit	Total Value	Value or Cost/Acre	2019 Proj. Value or Cost/Acre
VARIABLE COSTS								
Fertilizer		Acre	100	\$60.00	\$60.00	\$6,000.00	\$60.00	\$60.00
Application		Acre	100	\$6.00	\$6.00	\$600.00	\$6.00	\$6.00
Herbicide		Acre	100	\$6.00	\$6.00	\$600.00	\$6.00	\$6.00
Application		Acre	100	\$6.00	\$6.00	\$600.00	\$6.00	\$6.00
Insecticide		Acre	100	\$4.00	\$4.00	\$400.00	\$4.00	\$4.00
Application		Acre	100	\$6.00	\$6.00	\$600.00	\$6.00	\$6.00
Water Cost		Acre	100	\$25.00	\$25.00	\$2,500.00	\$25.00	\$25.00
Irrigation Labor		Acre	100	\$25.00	\$25.00	\$2,500.00	\$25.00	\$25.00
Crop Insurance		Acre	100	\$2.50	\$2.50	\$250.00	\$2.50	\$2.50
Operator Labor		Acre	100	\$75.00	\$75.00	\$7,500.00	\$75.00	\$75.00
Fuel		Acre	100	\$64.79	\$64.79	\$6,479.00	\$64.79	\$64.79
Repairs & Maintenance		Acre	100	\$63.02	\$63.02	\$6,302.00	\$63.02	\$63.02
Interest		Acre	100	\$2.75	\$2.75	\$275.00	\$2.75	\$2.75
Twine		ton	500	\$4.45	\$4.45	\$2,225.00	\$22.25	\$22.25
Other		Acre	100	\$5.00	\$5.00	\$500.00	\$5.00	\$5.00
<b>Total Variable Costs</b>						<b>\$37,331.00</b>	<b>\$373.31</b>	<b>\$373.31</b>
INDIRECT COSTS								
Buildings, Equipment, & Improvements				\$4,500.62	\$4,500.62	\$4,500.62	\$45.01	\$45.01
Machinery & Vehicles				\$17,820.00	\$17,820.00	\$17,820.00	\$178.20	\$178.20
Taxes & Insurance				\$846.00	\$846.00	\$846.00	\$8.46	\$8.46
General Overhead				\$750.00	\$750.00	\$750.00	\$7.50	\$7.50
<b>TOTAL FIXED COSTS</b>						<b>\$23,916.62</b>	<b>\$239.17</b>	<b>\$239.17</b>
<b>TOTAL COSTS</b>						<b>\$61,247.62</b>	<b>\$612.48</b>	<b>\$612.48</b>
<b>Income Over Variable Costs</b>						<b>\$41,919.00</b>	<b>\$419.19</b>	<b>\$419.19</b>
<b>Income Over Total Costs</b>						<b>\$18,002.38</b>	<b>\$180.02</b>	<b>\$180.02</b>

**Table 6. Central Utah Cow/Calf Budget-96 head**

GROSS RECEIPTS FROM PRODUCTION							
GROSS RECEIPTS	Weight	Unit	Total Number of Head or Units	2018 Avg. Price/Unit	2019 Proj. Price/Unit	Total Value	Value or Cost/Head
Steer Calves	550	Lb	41	\$1.55	\$1.58	\$35,576.86	\$370.59
Heifer Calves	500	Lb	29	\$1.48	\$1.45	\$21,010.50	\$218.86
Replacement Heifers	500	Lb	-12	\$1.48	\$1.45	-\$8,671.00	-\$90.32
Cull Cows	1100	Lb	9	\$0.69	\$0.55	\$5,566.00	\$57.98
Cull Bulls	1400	Lb	1	\$0.55	\$0.55	\$805.00	\$8.39
<b>Total Receipts</b>						<b>\$62,958.36</b>	<b>\$565.49</b>

DIRECT COSTS							
	Unit	Total Number of Head or Units	2018 Avg. Price/Unit	2019 Proj. Price/Unit	Total Value	Value or Cost/Head	
Alfalfa Hay (Good Feeder)	Ton	47.22	\$110.00	\$135.00	\$6,374.88	\$66.41	
Grass Hay	Ton	105.11	\$115.00	\$100.00	\$10,510.56	\$109.48	
Private Meadow Pasture	AUM	202	\$21.13	\$22.00	\$4,439.61	\$46.25	
State Range	AUM	199	\$6.28	\$6.28	\$1,246.87	\$12.99	
Federal Range	AUM	397	\$1.41	\$1.41	\$559.90	\$5.83	
Protein, Vitamins, & Minerals	Head	96	\$13.49	\$12.10	\$1,161.60	\$12.10	
Grain Supplements	Lb	0	\$5.48	\$6.00	\$0.00	\$0.00	
Other Feed	Lb	0	\$10.54	\$12.00	\$0.00	\$0.00	
Veterinary Medicine	Head	96	\$31.52	\$39.00	\$3,744.00	\$39.00	
Breeding Fees	Head	96	\$5.25	\$5.25	\$504.00	\$5.25	
Transportation to and from Pasture	Head	96	\$9.00	\$9.94	\$954.24	\$9.94	
Hired Labor	Head	96	\$32.00	\$14.60	\$1,401.60	\$14.60	
Supplies	Head	96	\$18.00	\$30.77	\$2,953.45	\$30.77	
Other Variable and Misc. Costs	Head	96	\$11.00	\$45.00	\$4,320.00	\$45.00	
Marketing Costs	Head	96	\$32.00	\$25.99	\$2,959.04	\$30.82	
Liability Insurance	Year	1	\$1,500.00	\$1,500.00	\$2,500.00	\$26.04	
Office, Acct, Legal, & Investment Insurance	Year	1	\$1,000.00	\$1,000.00	\$1,500.00	\$15.63	
Interest on Operating Capital		\$24,101.80	\$0.06	\$0.07	\$4,328.18	\$45.09	
<b>Total Variable Costs</b>					<b>\$49,457.93</b>	<b>\$515.19</b>	
INDIRECT COSTS							
Labor (General & Management)	Head	96	\$84.73	\$60.00	\$5,760.00	\$60.00	
Machinery, Buildings & Improvements	Head	96	\$25.07	\$25.00	\$2,400.00	\$25.00	
Taxes & Insurance	Head	96	\$4.63	\$21.00	\$2,016.00	\$21.00	
General Overhead	Head	96	\$13.55	\$10.00	\$960.00	\$10.00	
Interest on Retained Livestock	Head	96	\$25.23	\$15.00	\$1,440.00	\$15.00	
<b>TOTAL FIXED COSTS</b>					<b>\$12,576.00</b>	<b>\$131.00</b>	
<b>TOTAL COSTS</b>					<b>\$62,033.93</b>	<b>\$646.19</b>	
<b>Income Over Variable Costs</b>					<b>\$13,500.43</b>	<b>\$50.31</b>	
<b>Income Over Total Costs</b>					<b>\$924.43</b>	<b>-\$80.69</b>	

**Table 7. Northern Utah Cow/Calf Budget-100 head**

GROSS RECEIPTS FROM PRODUCTION							
GROSS RECEIPTS	Weight	Unit	Total Number of Head or Units	2018 Avg. Price/Unit	2019 Proj. Price/Unit	Total Value	Value or Cost/Head
Steer Calves	550	Lb	45	\$1.55	\$1.58	\$38,670.50	\$386.71
Heifer Calves	500	Lb	32	\$1.48	\$1.45	\$22,837.50	\$228.38
Replacement Heifers	500	Lb	-13	\$1.48	\$1.45	-\$9,425.00	-\$94.25
Cull Cows	1100	Lb	10	\$0.69	\$0.55	\$6,050.00	\$60.50
Cull Bulls	1400	Lb	1	\$0.55	\$0.55	\$805.00	\$8.05
<b>Total Receipts</b>						<b>\$68,363.00</b>	<b>\$589.38</b>

DIRECT COSTS							
	Unit	Total Number of Head or Units	2018 Avg. Price/Unit	2019 Proj. Price/Unit	Total Value	Value or Cost/Head	
<b>VARIABLE COSTS</b>							
Alfalfa Hay (Good Feeder)	Ton	61.80	\$110.00	\$150.00	\$9,270.39	\$92.70	
Straw	Ton	61.80	\$65.00	\$75.00	\$4,635.19	\$46.35	
Private Meadow Pasture	AUM	430	\$21.13	\$22.00	\$9,451.75	\$94.52	
State Range	AUM	0	\$6.28	\$6.28	\$0.00	\$0.00	
Federal Range	AUM	539	\$1.41	\$1.41	\$759.70	\$7.60	
Non Fee Grazing Cost	AUM	539	\$15.00	\$15.00	\$8,081.88	\$80.82	
Protein, Vitamins, & Minerals	Head	100	\$13.49	\$12.10	\$1,210.00	\$12.10	
Grain Supplements	Lb	0	\$5.48	\$6.00	\$0.00	\$0.00	
Other Feed	Lb	0	\$10.54	\$12.00	\$0.00	\$0.00	
Veterinary Medicine	Head	100	\$31.52	\$20.00	\$2,000.00	\$20.00	
Breeding Fees	Head	100	\$5.25	\$5.25	\$525.00	\$5.25	
Transportation to and from Pasture	Head	100	\$9.00	\$9.94	\$994.00	\$9.94	
Hired Labor	Head	100	\$32.00	\$14.60	\$1,460.00	\$14.60	
Supplies	Head	100	\$18.00	\$30.84	\$3,084.09	\$30.84	
Other Variable and Misc. Costs	Head	100	\$11.00	\$45.00	\$4,500.00	\$45.00	
Marketing Costs	Head	100	\$32.00	\$24.00	\$3,213.06	\$32.13	
Liability Insurance	Year	1	\$1,500.00	\$1,500.00	\$2,500.00	\$25.00	
Office, Acct, Legal, & Investment Insurance	Year	1	\$1,000.00	\$1,000.00	\$1,500.00	\$15.00	
Interest on Operating Capital		\$18,400.28	\$0.06	\$0.07	\$4,688.18	\$46.88	
<b>Total Variable Costs</b>					<b>\$57,873.24</b>	<b>\$578.73</b>	
<b>INDIRECT COSTS</b>							
<b>Capital Recovery</b>							
Labor (General & Management)	Head	100	\$24.00	\$24.00	\$2,400.00	\$24.00	
Machinery, Buildings & Improvements	Head	100	\$25.07	\$25.00	\$2,500.00	\$25.00	
Taxes & Insurance	Head	100	\$4.63	\$4.50	\$450.00	\$4.50	
General Overhead	Head	100	\$13.55	\$10.00	\$1,000.00	\$10.00	
Interest on Retained Livestock	Head	100	\$25.23	\$15.00	\$1,500.00	\$15.00	
<b>TOTAL INDIRECT COSTS</b>					<b>\$7,850.00</b>	<b>\$78.50</b>	
<b>TOTAL COSTS</b>					<b>\$65,723.24</b>	<b>\$657.23</b>	
<b>Income Over Variable Costs</b>					<b>\$10,489.76</b>	<b>\$10.65</b>	
<b>Income Over Total Costs</b>					<b>\$2,639.76</b>	<b>-\$67.85</b>	

## Peony Cut Flower Budget for One High Tunnel

*Melanie Stock, Assistant Professor, Department of Plants, Soils, and Climate, Utah State University*

*Ruby Ward, Professor Department, Applied Economics, Utah State University*

*Maegen Lewis, Graduate Research Assistant, Plants, Soils, and Climate, Utah State University*

This budget contains establishment costs, ongoing costs, and returns for the production and sale of Peony cut flowers that were grown in a high-tunnel (42 feet by 14 feet). The costs are representative, but should be adjusted where necessary for individual situations. Tunnel use, site selection, variety, pest management, and other practices will affect costs of the cut-flower operation. Peonies are perennial plants that require an establishment period in years 1 - 3, before a production period in years 4 - 20.

**Variety and Market:** The cost per plant ranges across Peony varieties, with more marketable varieties (i.e. those with desirable bloom type, color, and size) generally costing more. Therefore, not all plants cost the same amount or are marketed equally; investment in premium varieties affects sales in subsequent years. This budget is for 'Coral Charm', a highly desirable peony among florists.

**Yearly Labor:** 40 hours in years 1 – 3. 70 hours for production and 30 hours for sales in years 4 – 20. Additional hours in years 4-20 include time to harvest, clean the stems, sell, and deliver to florists.

**Mileage:** 1,200 miles to deliver to florists, using a state mileage rate of \$0.485 per mile. Mileage can change based on delivery plans (e.g. combining with other flower orders, working with co-ops).

**Table 1: Peony Cut Flower in High Tunnel Pre-Productive Costs (Years 1-3).**

Input	Total Units \$/unit	Unit	Price/Cost Per Unit Unit	Total Cost/Value Total [\$]
<b>YEAR 1 ESTABLISHMENT COSTS</b>				
High tunnel structure with plastic and two, vented doors	1	Tunnel	\$ 500.00	\$ 500.00
Drip irrigation	1	Tunnel	\$ 100.00	\$ 100.00
Tillage: rototiller lease	1	Tunnel	\$ 50.00	\$ 50.00
Peony: bare root plant	50	Plant	\$ 23.00	\$ 1,150.00
Landscape fabric for pathways	1	Roll	\$ 25.00	\$ 25.00
Compost (1 inch)	2	Yard	\$ 75.00	\$ 150.00
Labor (planting, setup time, maintenance time)	40	Hours	\$ 13.50	\$ 540.000
Water: culinary	3	1,000 gal	\$ 1.62	\$ 4.86
<b>TOTAL YEAR 1 COSTS</b>				<b>\$2,519.86</b>
<b>MAINTENANCE COSTS EACH YEAR (YEARS 2 AND 3)</b>				
Fertilizer (15-15-15-3 @ 43.6 lbs./ac.)	--		-	\$ 4.17
Labor (setup time, maintenance time)	40	Hours	\$ 13.50	\$ 541.20
Water: culinary	1.62	1,000 gal	\$ .00	\$ 6.48
<b>MAINTENANCE COSTS</b>				<b>\$1,103.70</b>
<b>TOTAL PRE-PRODUCTIVE PERIOD COSTS</b>				<b>\$4,727.26</b>
<b>ANNUAL CAPITAL RECOVERY PRE-PRODUCTIVE COSTS</b>				<b>\$278.07</b>

**Table 2: Enterprise Budget Peony Cut Flowers in High Tunnel (Years 4-20)**

<b>Input</b>	<b>Total Units</b>	<b>Unit</b>	<b>Price/Cost Per Unit</b>	<b>Total Cost/Value</b>
	<b>\$/unit</b>		<b>Unit</b>	<b>Total [\$]</b>
<b>GROSS INCOME</b>				
Peony Cut Flowers				
Grade 1 and 2 (less than 100 stems in order)	150	Stem	\$ 6.00	\$ 900.00
Grade 1 and 2 (more than 100 stems in order)	450	Stem	\$ 4.00	\$ 1,800.00
Culled Stems	75	Stem	\$ 2.00	\$ 150.00
<b>TOTAL GROSS INCOME</b>				<b>\$ 2,850.00</b>
<b>OPERATING COSTS</b>				
Fertilizer (15-15-15-3 @ 43.6 lbs./ac.)	1	6 lb bag	\$ 9.00	\$ 9.00
Pesticides (for ants, Botrytus and Powdery Mildew) <sup>1</sup>	1	Tunnel	\$ 12.40	\$ 12.40
Labor	100	Hours	\$ 13.50	\$ 1,350.00
Mileage	1200	Miles	\$ 0.485	\$ 582.00
Water <sup>2</sup>	3	Thous. Gal.	\$ 1.62	\$ 4.86
Drip Irrigation Maintenance	1	Tunnel	\$ 20.00	\$ 20.00
Harvest (Buckets, tools, and preservative)	1	tunnel	\$ 50.00	\$ 50.00
Maintenance (tunnel, landscape fabric) <sup>3</sup>	1	Tunnel	\$ 102.00	\$ 102.00
Miscellaneous	1	Tunnel	\$ 30.00	\$ 30.00
<b>TOTAL OPERATING COSTS</b>				<b>\$ 2,160.26</b>
<b>INCOME ABOVE OPERATING COSTS</b>				<b>\$ 689.74</b>
<b>OWNERSHIP COSTS</b>				
Land <sup>4</sup>				\$ 20.00
Capital Recovery of Establishment Costs				\$ 278.07
<b>TOTAL OVERHEAD COSTS</b>				<b>\$ 298.07</b>
<b>TOTAL COSTS</b>				<b>\$ 2,458.33</b>
<b>NET PROJECTED RETURNS</b>				<b>\$ 391.67</b>

<sup>1</sup>**Pesticides:** Treatment of ants (traps), Botrytus (10 times per year), and powdery mildew (4 times / year).

<sup>2</sup>**Water:** 240 gallons per irrigation with 12 total (2 irrigations per month for 6 months) = 2,880 gallons

<sup>3</sup>**Tunnel Maintenance:** High tunnel structure lasts 5 years (\$100) and landscape fabric lasts 15 years (\$2).

<sup>4</sup>**Land:** One high tunnel uses less than 2% of one acre and is assumed to be on land already owned, given peonies are a 20-year perennial crop. However, \$20 is used as a proxy (2% @ \$1,000 / acre).

## Enterprise Budgets Red Peppers With Shade

*By: Dan Drost (professor, Plant, Soils and Climate Department) and Ruby Ward (Professor, Applied Economics Department), Utah State University*

**Land:** Average lease costs range from \$500 to \$1,500 annually. A lease rate of \$1,000 per acre is used here. A 100 foot row is considered 0.01 acres.

**Pepper pricing and yields:** Commercial market prices are used for 1-acre budget and farmers market prices for 100 ft. row budget. Yields are averages over three years.

**Labor:** One-acre budget includes 27 hours for shade structure assembly and 17 hours for disassembly each year. 100 ft. row budget includes 4 hours for shade assembly, 3 hours for disassembly and 10 hours of operator labor including farmers' market sales.

**Shade structure:** The shade structure supplies are listed below in tables 1 and 2. The labor for assembly and disassembly is included in the general labor costs as it is an annual expense.

**Table 1: Shade Structure Costs for 1-Acre.**

Materials	Total Units	Unit	Price/Cost Per Unit	Total Cost/Value	Useful life	Annual Cost
Oil well tubing	20	Each	\$ 20.00	\$ 400.00	20	20
High tensile wire	1	Spool	\$ 90.00	\$ 90.00	2	45
Gripple wire joiners	100	Each	\$ 1.50	\$ 150.00	20	7.5
Tensioning Tool	1	Each	\$ 70.00	\$ 70.00	20	3.5
Helix anchors	20	Each	\$ 6.00	\$ 120.00	20	6
30% shade	8	Panels	\$ 850.00	\$ 6,800.00	10	680
Fabric clips	300	Packet	\$ 0.16	\$ 48.00	5	9.6
<b>Total cost</b>				\$ 7,678.00		\$ 771.60

**Table 2: Shade Structure Costs for 100 Foot Row.**

Materials	Total Units	Unit	Price/Cost Per Unit	Total Cost/Value	Useful life	Annual Cost
1/2" rebar	22	2' long	\$ 2.70	\$ 59.40	20	2.97
1/2" conduit (10 ft)	21	10' long	\$ 3.70	\$ 77.70	20	3.885
Conduit connectors	10	box	\$ 12.80	\$ 12.80	20	0.64
Conduit bender	1		\$ 40.00	\$ 40.00	20	2
30% shade (6' wide)	1		\$ 90.00	\$ 90.00	10	9
Fabric clips	33	0.706" OD	\$ 0.60	\$ 19.80	5	3.96
<b>Total cost</b>				\$ 299.70		\$ 22.46

**Other costs:** Per acre cost for utilities, irrigation, maintenance and miscellaneous as well as the general overhead costs and capital recovery were from (Curtis, Olsen and Wagner). For the 100-ft row, 1% of the per acre costs were used.

**References:**

Curtis, K., S. Olsen, and K. Wagner. "Utah Urban Small-Scale Mixed Vegetable Production Costs and Returns – 5 Acres, 2015." USU Extension (AG/Applied Economics/2015-03pr). Available at:

[https://digitalcommons.usu.edu/cgi/viewcontent.cgi?article=1758&context=extension\\_curall](https://digitalcommons.usu.edu/cgi/viewcontent.cgi?article=1758&context=extension_curall)



**Table 3: Red Bell Pepper With Shade Enterprise Budget for 1 Acre**

	Total Units	Unit	\$ Per Unit	Total Cost/Value
<b>GROSS INCOME</b>				
Red bell peppers				
Fancy class	750	Carton	\$ 22.00	\$ 16,500.00
First class	430	Carton	\$ 19.00	\$ 8,170.00
Second class	300	Carton	\$ 15.00	\$ 4,500.00
Green bell peppers	200	Carton	\$ 10.00	\$ 2,000.00
<b>TOTAL GROSS INCOME</b>				<b>\$ 31,170.00</b>
<b>OPERATING COSTS</b>				
Land Rental	1	Acre	\$ 1,000	\$ 1,000.00
Fuel	20	Gallon	\$ 3.50	\$ 70.00
Seedlings	15,100	Each	\$ 0.15	\$ 2,265.00
Fertilizer				
0-0-60	223	Pound	\$ 0.30	\$ 66.90
11-52-00	232	Pound	\$ 0.30	\$ 69.60
46-0-0	248	Pound	\$ 0.30	\$ 74.40
20-20-20 soluble	1	25 lb. Bag	\$ 20.00	\$ 20.00
Herbicides (Trust®)	1.5	Pint	\$ 7.00	\$ 10.50
Carton or Box	1487	Carton	\$ 1.20	\$ 1,784.40
Labor	665	Hours	\$ 13.50	\$ 8,977.50
Operator Labor	33.25	Hours	\$ 30.00	\$ 997.50
Utilities *	1	Acre	\$ 940.00	\$ 940.00
Irrigation*	1	Acre	\$ 400.00	\$ 400.00
Maintenance*	1	Acre	\$ 395.00	\$ 395.00
Sharde structure non labor costs	1	Acre	\$ 771.60	\$ 771.60
Miscellaneous*	1	Acre	\$ 50.00	\$ 50.00
<b>TOTAL OPERATING COSTS</b>				<b>\$ 16,892.40</b>
<b>INCOME ABOVE OPERATING COSTS</b>				<b>\$ 14,277.60</b>
<b>OWNERSHIP COSTS</b>				
<b>CASH OVERHEAD COSTS</b>				
General overhead (Insurance, Accounting, Legal, Office, travel)*				\$ 470.00
Interest on operating capital				\$ 591.23
<b>TOTAL CASH OVERHEAD COSTS</b>				<b>\$ 1,061.23</b>
<b>NONCASH OVERHEAD COSTS (Capital Recovery)</b>				
Buildings, Improvements & Equipment*				\$ 340.00
Machinery & Vehicles*				\$ 950.00
<b>TOTAL NONCASH OVERHEAD COSTS</b>				<b>\$ 950.00</b>
<b>TOTAL OWNERSHIP COSTS</b>				<b>\$ 2,011.23</b>
<b>TOTAL COSTS</b>				<b>\$ 18,903.63</b>
<b>NET PROJECTED RETURNS</b>				<b>\$ 12,266.37</b>

\* Per acre costs from Curtis, K., S. Olsen, and K. Wagner. "Utah Urban Small-Scale Mixed Vegetable Production Costs and Returns – 5 Acres, 2015." USU Extension (AG/Applied Economics/2015-03pr). Available at:

[https://digitalcommons.usu.edu/cgi/viewcontent.cgi?article=1758&context=extension\\_cural](https://digitalcommons.usu.edu/cgi/viewcontent.cgi?article=1758&context=extension_cural)

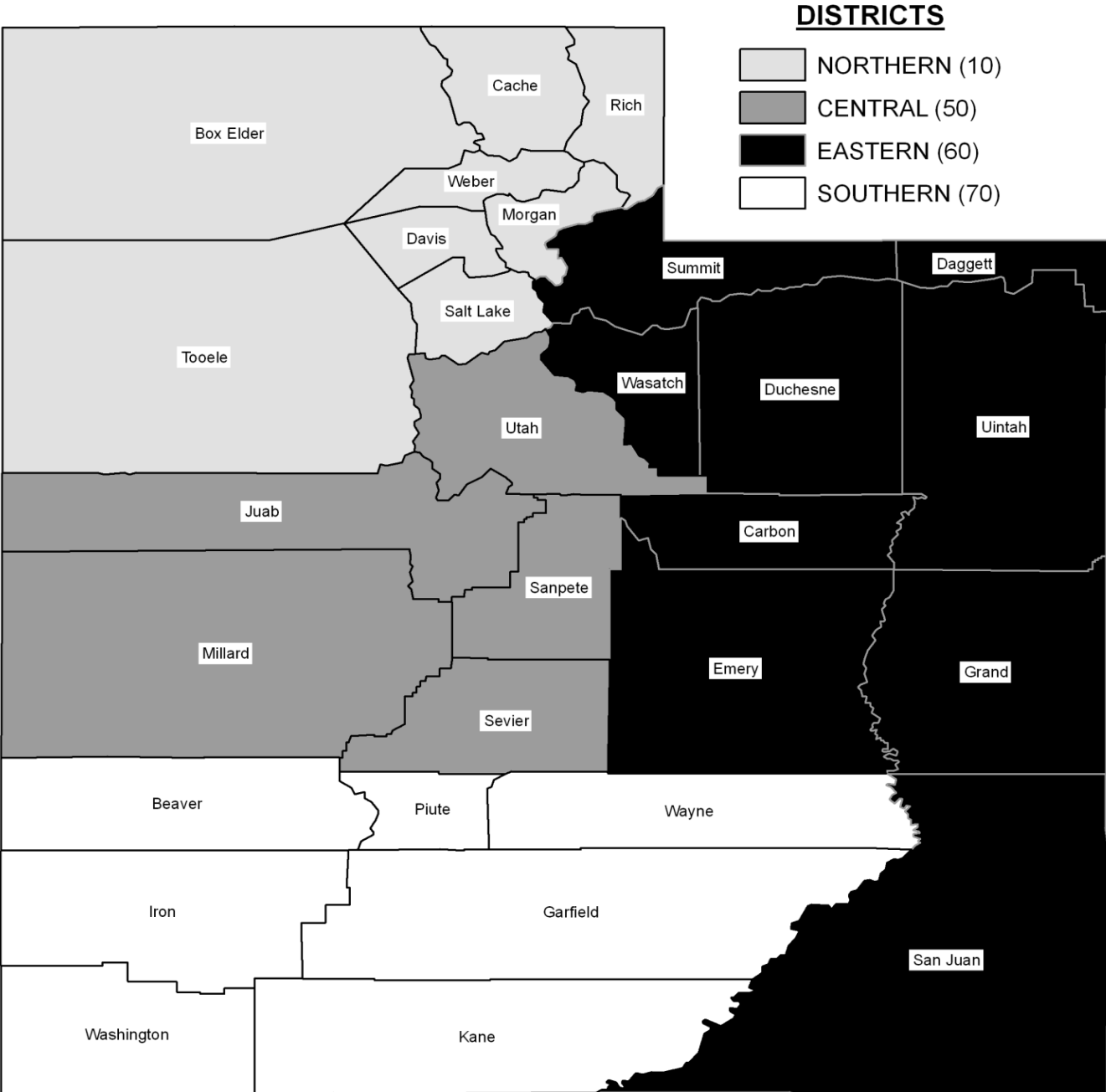
**Table 4: Red Bell Pepper With Shade Enterprise Budget for 100 ft. row**

	Total Units	Unit	Price/Cost Per Unit	Total Cost/Value
<b>GROSS INCOME</b>				
Red bell peppers				
Fancy and first class	960	each	\$ 1.00	\$ 960.00
Second class	600	each	\$ 0.75	\$ 450.00
Green bell peppers	300	each	\$ 0.50	\$ 150.00
<b>TOTAL GROSS INCOME</b>				<b>\$ 1,560.00</b>
<b>OPERATING COSTS</b>				
Land Rental	0.01	Acre	\$ 1,000	\$ 10.00
Fuel	4	Gallon	\$ 3.50	\$ 14.00
Seedlings	151	Each	\$ 0.15	\$ 22.65
Fertilizer				
0-0-60	2.23	Pound	\$ 0.30	\$ 0.67
11-52-00	2.32	Pound	\$ 0.30	\$ 0.70
46-0-0	2.48	Pound	\$ 0.30	\$ 0.74
20-20-20 soluble	0.01	25 lb. Bag	\$ 20.00	\$ 0.20
Carton or Box	14.87	Carton	\$ 1.20	\$ 17.84
Labor	15	Hours	\$ 13.50	\$ 202.50
Operator Labor	10	Hours	\$ 30.00	\$ 300.00
Utilities*	0.01	Acre	\$ 940.00	\$ 9.40
Irrigation*	0.01	Acre	\$ 400.00	\$ 4.00
Maintenance*	0.01	Acre	\$ 395.00	\$ 3.95
Shade structure non labor costs	1	100 ft. row	\$ 22.46	\$ 22.46
Miscellaneous*	0.01	Acre	\$ 50.00	\$ 0.50
<b>TOTAL OPERATING COSTS</b>				<b>\$ 599.61</b>
<b>INCOME ABOVE OPERATING COSTS</b>				<b>\$ 960.39</b>
<b>OWNERSHIP COSTS</b>				
<b>CASH OVERHEAD COSTS</b>				
Farmers market booth				\$ 20.00
General overhead (Insurance, Accounting, Legal, Office, travel)*				\$ 4.70
<b>TOTAL CASH OVERHEAD COSTS</b>				<b>\$ 24.70</b>
<b>NONCASH OVERHEAD COSTS (Capital Recovery)</b>				
Buildings, Improvements & Equipment*				\$ 3.40
Machinery & Vehicles*				\$ 9.50
<b>TOTAL NONCASH OVERHEAD COSTS</b>				<b>\$ 9.50</b>
<b>TOTAL OWNERSHIP COSTS</b>				<b>\$ 34.20</b>
<b>TOTAL COSTS</b>				<b>\$ 633.81</b>
<b>NET PROJECTED RETURNS</b>				<b>\$ 926.19</b>

\* 1% of Per acre costs from Curtis, K., S. Olsen, and K. Wagner. "Utah Urban Small-Scale Mixed Vegetable Production Costs and Returns – 5 Acres, 2015." USU Extension (AG/Applied Economics/2015-03pr). Available at:

[https://digitalcommons.usu.edu/cgi/viewcontent.cgi?article=1758&context=extension\\_curall](https://digitalcommons.usu.edu/cgi/viewcontent.cgi?article=1758&context=extension_curall)

# UTAH COUNTIES AND DISTRICTS



UNITED STATES DEPARTMENT OF AGRICULTURE  
NATIONAL AGRICULTURAL STATISTICS SERVICE  
MOUNTAIN REGION, UTAH FIELD OFFICE  
350 S MAIN ST, SUITE 100  
SALT LAKE CITY, UTAH 84101

