



United States Department of Agriculture
National Agricultural Statistics Service



Slaughter

Data Relating to February, 2025

Southern Plains Regional Field Office · Post Office Box 70, Austin, Texas 78767 · 800-626-3142 · www.nass.usda.gov
Cooperating with the Oklahoma Department of Agriculture, Food and Forestry and Texas Department of Agriculture

U.S. Commercial Red Meat Production Down 7 Percent

Thank you to all those who respond to the monthly slaughter report. Without your participation we could not provide you with the timely data that is necessary in today's fast moving economy. This report is a summary of slaughter reports for Oklahoma, and Texas, which together comprise the Southern Plains region. Additionally, this report includes a summary of national data.

Commercial Red Meat Production, February 2024 and 2025

State	February 2024	January 2025	February 2025	February 2025 as % of 2024
	<i>million pounds</i>	<i>million pounds</i>	<i>million pounds</i>	<i>percent</i>
Oklahoma	118.1	115.7	96.8	82
Texas	352.3	381.9	330.8	94
United States	4,554.3	4,885.2	4,233.1	93

Commercial Cattle Slaughter, February 2024 and 2025

State	Number Slaughtered		Total Live Weight		Average Live Weight	
	2024	2025	2024	2025	2024	2025
	<i>head</i>	<i>head</i>	<i>pounds</i>	<i>pounds</i>	<i>pounds</i>	<i>pounds</i>
Oklahoma	6,100	6,100	7,134,000	7,381,000	1,197	1,217
Texas	437,100	395,200	577,734,000	538,499,000	1,325	1,366
United States	2,613,200	2,323,800	3,609,528,000	3,321,976,000	1,384	1,432

Commercial Hog Slaughter, February 2024 and 2025

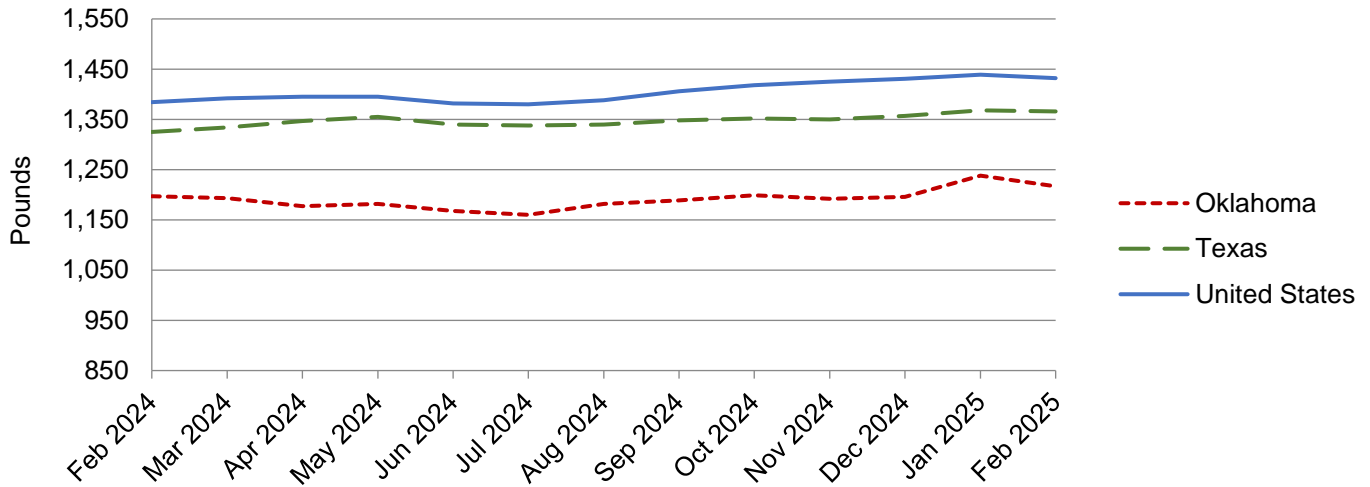
State	Number Slaughtered		Total Live Weight		Average Live Weight	
	2024	2025	2024	2025	2024	2025
	<i>head</i>	<i>head</i>	<i>pounds</i>	<i>pounds</i>	<i>pounds</i>	<i>pounds</i>
Oklahoma	496,400	421,300	148,631,000	121,748,000	299	289
Texas	23,400	22,900	4,704,000	4,490,000	201	196
United States	10,985,600	10,163,600	3,189,279,000	2,952,520,000	290	291

Commercial Sheep and Lamb Slaughter, February 2024 and 2025

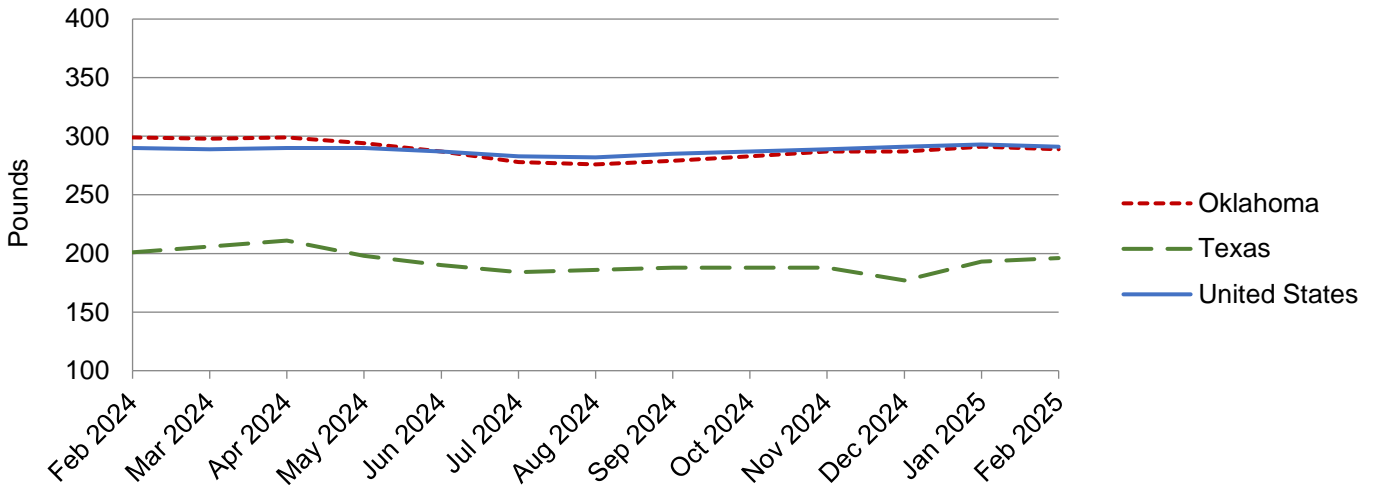
State	Number Slaughtered		Total Live Weight		Average Live Weight	
	2024	2025	2024	2025	2024	2025
	<i>head</i>	<i>head</i>	<i>pounds</i>	<i>pounds</i>	<i>pounds</i>	<i>pounds</i>
Oklahoma	(D)	(D)	(D)	(D)	(D)	(D)
Texas	21,400	23,200	2,319,000	2,415,000	109	104
United States	171,900	169,000	21,370,000	20,720,000	124	123

(D) Withheld to avoid disclosing data for individual operations.

Cattle: Live Weight per Head, Southern Plains and U.S., 2024-2025



Hogs: Live Weight per Head, Southern Plains and U.S., 2024-2025



NASS provides accurate, timely, useful and objective statistics in service to U.S. agriculture. In order to view the full national report, please visit the following website: www.nass.usda.gov/Publications/.