



# Slaughter

Data Relating to December, 2023

Southern Plains Regional Field Office · Post Office Box 70, Austin, Texas 78767 · 800-626-3142 · [www.nass.usda.gov](http://www.nass.usda.gov)  
Cooperating with the Oklahoma Department of Agriculture, Food and Forestry and Texas Department of Agriculture

## U.S. Commercial Red Meat Production Up 2 Percent

Thank you to all those who respond to the monthly slaughter report. Without your participation we could not provide you with the timely data that is necessary in today's fast moving economy. This report is a summary of slaughter reports for Oklahoma, and Texas, which together comprise the Southern Plains region. Additionally, this report includes a summary of national data.

### Commercial Red Meat Production, December 2022 and 2023

State	December 2022	November 2023	December 2023	December 2023 as % of 2022
	<i>million pounds</i>	<i>million pounds</i>	<i>million pounds</i>	<i>percent</i>
Oklahoma	104.3	95.8	98.0	94
Texas	371.8	378.6	361.6	97
United States	4,471.1	4,684.5	4,546.3	102

### Commercial Cattle Slaughter, December 2022 and 2023

State	Number Slaughtered		Total Live Weight		Average Live Weight	
	2022	2023	2022	2023	2022	2023
	<i>head</i>	<i>head</i>	<i>pounds</i>	<i>pounds</i>	<i>pounds</i>	<i>pounds</i>
Oklahoma	4,400	5,400	5,348,000	6,223,000	1,228	1,179
Texas	463,600	445,600	613,635,000	593,106,000	1,327	1,335
United States	2,684,700	2,593,400	3,708,554,000	3,625,443,000	1,384	1,401

### Commercial Hog Slaughter, December 2022 and 2023

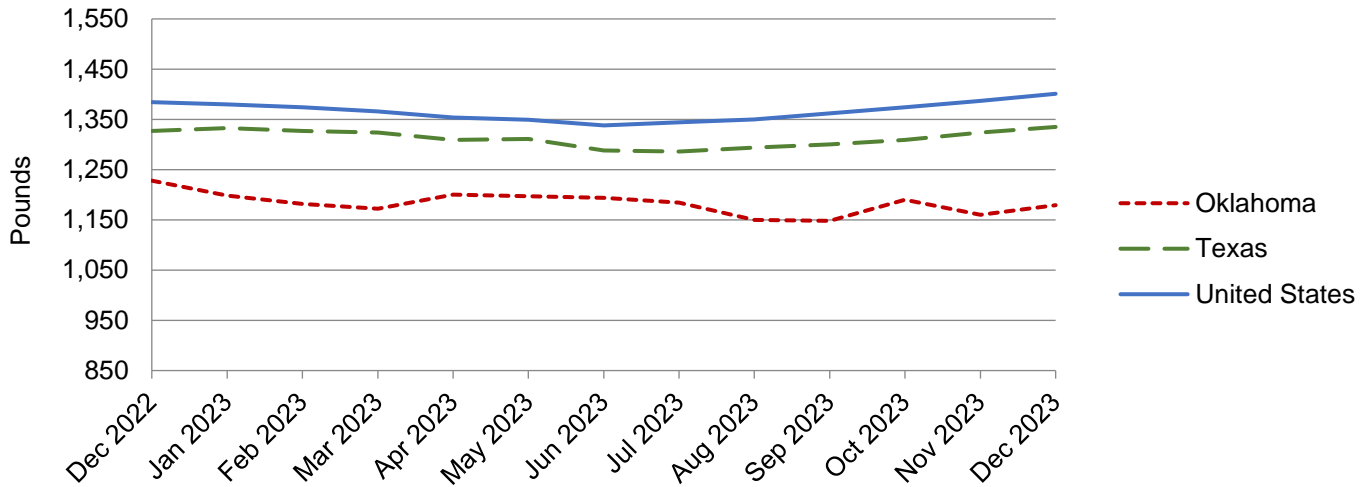
State	Number Slaughtered		Total Live Weight		Average Live Weight	
	2022	2023	2022	2023	2022	2023
	<i>head</i>	<i>head</i>	<i>pounds</i>	<i>pounds</i>	<i>pounds</i>	<i>Pounds</i>
Oklahoma	455,900	419,300	134,131,000	123,483,000	294	294
Texas	26,500	26,600	6,245,000	4,931,000	236	185
United States	10,299,000	10,825,500	3,001,367,000	3,149,370,000	292	291

### Commercial Sheep and Lamb Slaughter, December 2022 and 2023

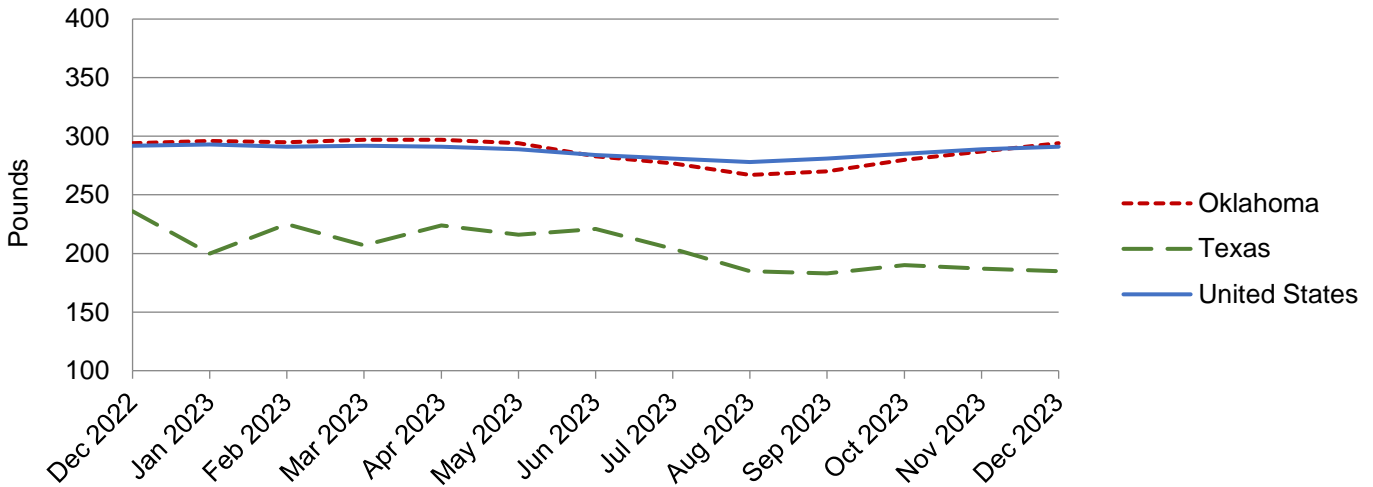
State	Number Slaughtered		Total Live Weight		Average Live Weight	
	2022	2023	2022	2023	2022	2023
	<i>head</i>	<i>head</i>	<i>pounds</i>	<i>pounds</i>	<i>pounds</i>	<i>pounds</i>
Oklahoma	(D)	(D)	(D)	(D)	(D)	(D)
Texas	21,600	22,700	2,345,000	2,330,000	108	103
United States	178,500	182,400	21,698,000	21,011,000	122	115

(D) Withheld to avoid disclosing data for individual operations.

**Cattle: Live Weight per Head, Southern Plains and U.S., 2022-2023**



**Hogs: Live Weight per Head, Southern Plains and U.S., 2022-2023**



NASS provides accurate, timely, useful and objective statistics in service to U.S. agriculture. In order to view the full national report, please visit the following website: [www.nass.usda.gov/Publications/](http://www.nass.usda.gov/Publications/).