

# ANNUAL CATTLE REVIEW

## TEXAS AND U.S. INVENTORY

Data Source: USDA-NASS *January Cattle Report*

Texas' January 1, 2023 inventory of all cattle and calves, at 12.5 million head, was down 200 thousand from the January 1, 2022 inventory. All cows and heifers that calved, at 4.95 million head, were down 2 percent. Bulls, at 330 thousand head, were unchanged from January 1, 2022. All heifers over 500 pounds, at 2.58 million head, were down 2 percent from last year. Steers over 500 pounds, at 2.58 million head, were down 2 percent from January 1, 2022. The 2022 annual calf crop for Texas, at 4.55 million head, was down 1 percent from the previous year.

The United States all cattle and calves inventory went down 3 percent; totaling 89.3 million head on January 1, 2023. All cows and heifers that have calved, at 38.3 million head, were down 3 percent from the 39.4 million head on January 1, 2022. The 2022 annual calf crop for the United States was estimated at 34.5 million head, down 2 percent from the previous year.

**Cattle and Calves: Inventory by Class and Calf Crop,  
Texas and United States, January 1, 2022-2023**

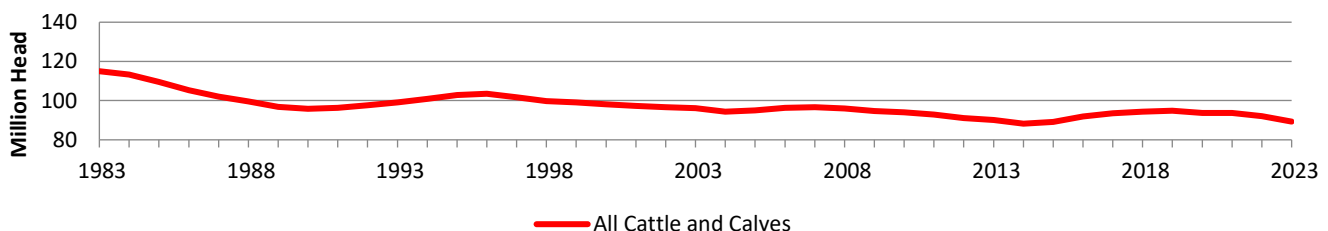
Class	Texas			United States <sup>1</sup>		
	2022	2023	Percent of Previous Year	2022	2023	Percent of Previous Year
	1,000 Head	1,000 Head	Percent	1,000 Head	1,000 Head	Percent
<b>All Cattle and Calves</b>	<b>12,700</b>	<b>12,500</b>	<b>98</b>	<b>92,077</b>	<b>89,274</b>	<b>97</b>
Cows and Heifers That Have Calved	5,050	4,950	98	39,360	38,320	97
Beef Cows	4,425	4,300	97	29,983	28,918	96
Milk Cows	625	650	104	9,377	9,403	100
Heifers 500 Pounds and Over	2,640	2,580	98	19,916	19,173	96
Beef Cow Replacements	710	640	90	5,482	5,164	94
Milk Cow Replacements	240	240	100	4,441	4,337	98
Other Heifers	1,690	1,700	101	9,994	9,672	97
Steers 500 Pounds and Over	2,630	2,580	98	16,705	16,132	97
Bulls 500 Pounds and Over	330	330	100	2,110	2,029	96
Calves Under 500 Pounds	2,050	2,060	100	13,986	13,621	97
<b>Cattle on Feed</b>	<b>2,930</b>	<b>2,780</b>	<b>95</b>	<b>14,695</b>	<b>14,157</b>	<b>96</b>
<b>Calf Crop <sup>2</sup></b>	<b>4,600</b>	<b>4,550</b>	<b>99</b>	<b>35,166</b>	<b>34,465</b>	<b>98</b>
Born January 1 - June 30	(NA)	(NA)	(NA)	25,700	25,300	98
Born July 1 - December 31	(NA)	(NA)	(NA)	9,466	9,165	97

(NA) Not available.

<sup>1</sup> Totals may not add due to rounding.

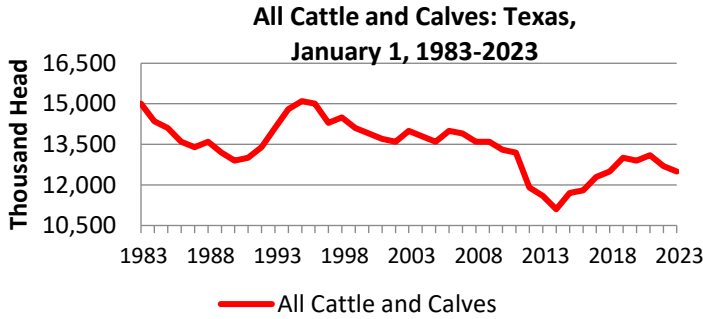
<sup>2</sup> Calf crop refers to calves born during the previous year.

**All Cattle and Calves: Inventory, United States, 1983-2023**



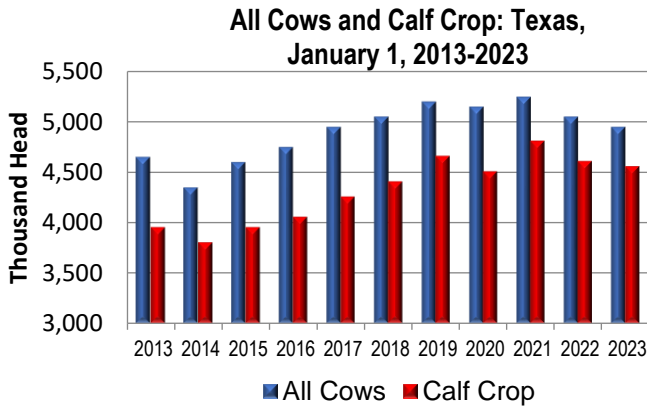
# TEXAS AND U.S. INVENTORY (CONTINUED)

Data Source: USDA-NASS *January Cattle Report*



Texas January 1, 2023 inventory of all cattle and calves, at 12.5 million head, was down 2 percent from the previous year. This marks the second consecutive year of decreased total cattle inventory in Texas.

Texas continues to rank highest in inventory of all cattle and calves. The top five states as of January 1, 2023 inventory levels are as follows: Texas, Nebraska, Kansas, California, and Oklahoma.



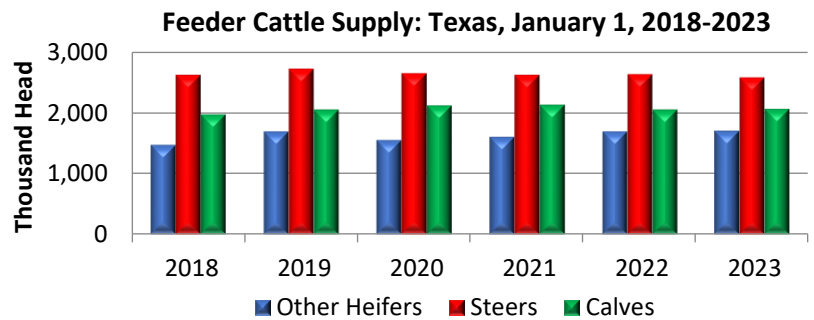
**January 1, 2022 Inventory and 2023 Inventory for Top Five States**

Rank	State	2022	2023	Percent of Previous year
1	Texas	12700	12500	98
2	Nebraska	6800	6500	96
3	Kansas	6500	6250	96
4	California	5200	5200	100
5	Oklahoma	5200	4600	88

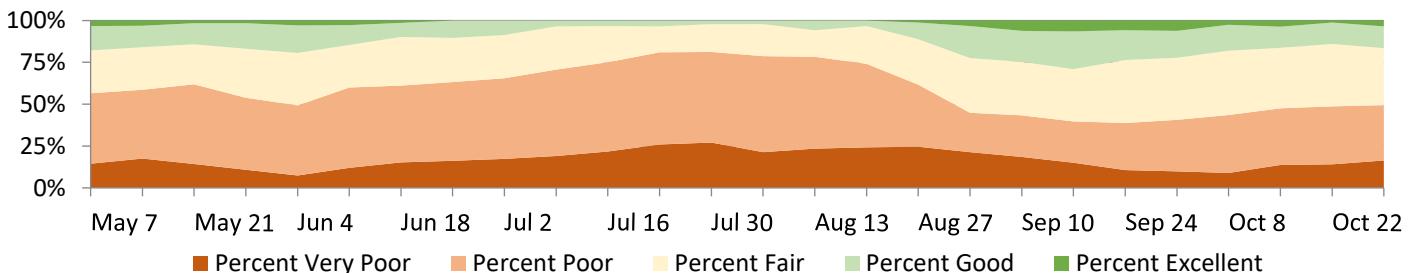
# TEXAS FEEDER SUPPLY AND PASTURE CONDITION

Data Source: USDA-NASS *January Cattle and Weekly Crop Progress Reports*

Total Texas feeder cattle supply, consisting of other heifers, steers, and calves, is down slightly from one year ago. Other heifers over 500 pounds, at 1,700 thousand head, were up 1 percent from last year. Steers over 500 pounds, at 2.58 million head, were down 2 percent from January 1, 2022. Calves less than 500 pounds, at 2.06 million head, were up slightly from a year ago.



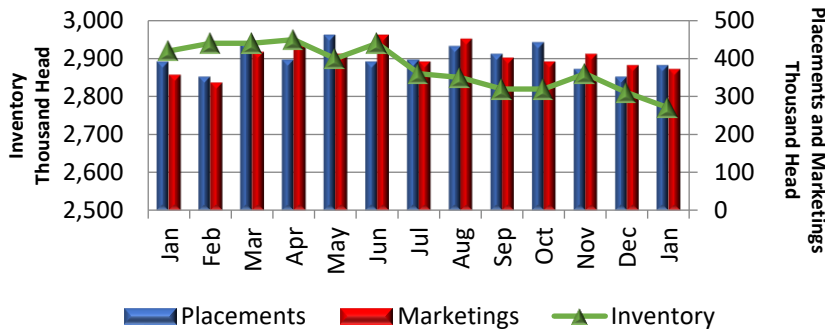
**2022 Weekly Pasture Condition: Texas**



# TEXAS CATTLE ON FEED

Data Source: USDA-NASS monthly *Cattle on Feed Report*

**Cattle on Feed: Inventory, Placements, Marketings, 1000+ Head Capacity Feedlots, Texas, 2022-2023**



January 1, 2023 cattle on feed inventory for Texas totaled 2,770 thousand head in feedlots with capacity of 1,000 or more head, down 1 percent from the previous month and down 5 percent from January 1, 2022.

Placements during 2022 decreased 3 percent to 4.91 million head, compared to 5.06 million head in 2021. Marketings of fed cattle for slaughter decreased slightly from 4.86 million in 2021 to 4.85 million in 2022.

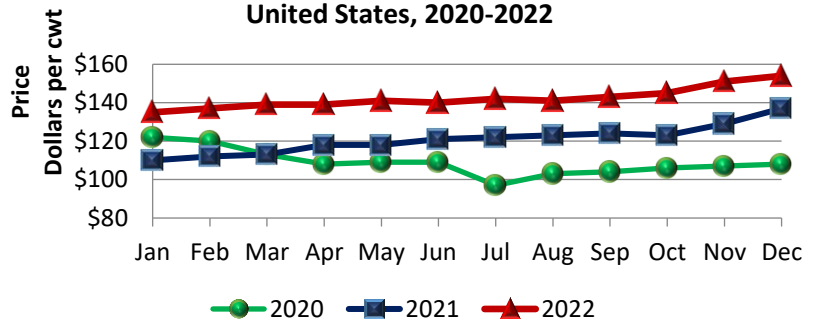
# U.S. MONTHLY CATTLE PRICES

Data Source: USDA-NASS monthly *Agricultural Prices Report*

Nationally, prices started January, 2022 at \$135 per hundredweight, \$25 higher than January 2021, closing out the year at \$154 per hundredweight.

Prices increased in all months of 2022, except July, which has continued an upward trend of prices since July 2020.

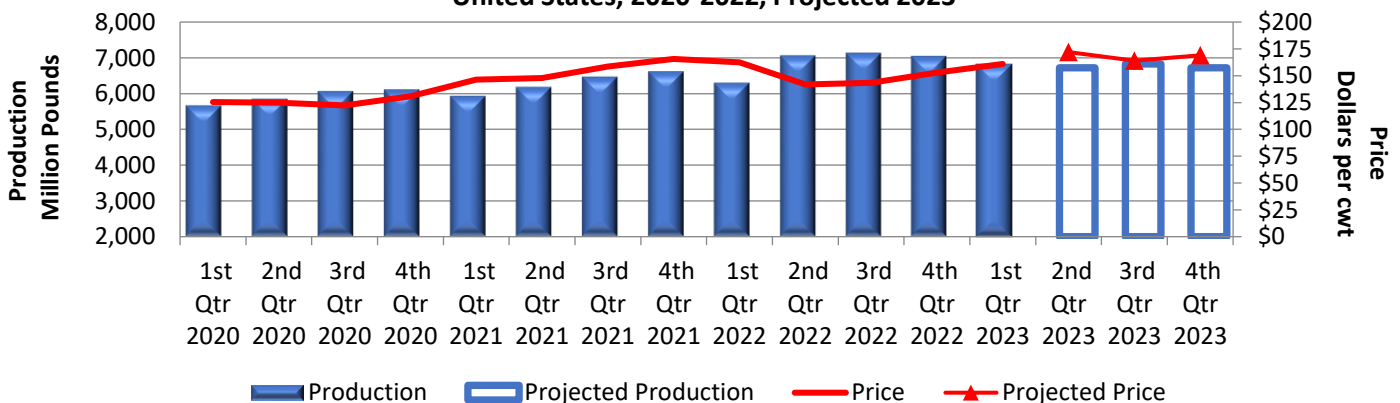
**Cattle 500+ Pounds: Monthly Prices Received, United States, 2020-2022**



# U.S. PRODUCTION AND PRICE OUTLOOK

Data Source: USDA-WAOB *World Agriculture Supply and Demand Estimates Report*

**Beef Production and Price by Quarter: United States, 2020-2022, Projected 2023**



Welcome to the 2023 edition of the Annual Cattle Review. Thanks to all participants in the cattle industry for their continued support and cooperation – especially the producers who provide data for the bi-annual Cattle and monthly Cattle on Feed surveys. Without their commitment and participation, this report would not be possible. A random sample of United States cattle producers was surveyed in early January. Survey procedures ensured that all cattle producers, regardless of size, had a chance to be included in the survey.

Though many of the statistics in this publication can be accessed through our website on a regular basis ([www.nass.usda.gov/Publications](http://www.nass.usda.gov/Publications)), this review will be issued annually following the release of the USDA-NASS Annual Meat Animals Production, Disposition and Income Annual Summary each April.

Please feel free to contact our office with any comments or questions you may have. I hope you find this information useful!

*Wilbert Hundl, Jr.,  
Regional Director  
USDA-NASS Southern Plains Regional Field Office  
Serving Oklahoma and Texas*

### OUR CONFIDENTIALITY PLEDGE

● **Names, addresses, and personal identifiers are fully protected by NASS with the force of law.** Title 7, U.S. Code, Section 2276 and the Confidential Information Protection and Statistical Efficiency Act **prohibit public disclosure** of individual information. ● **Only authorized** persons working for NASS as employees or sworn agents, who are subject to fines and imprisonment for unauthorized disclosure, can access individual record data and only for approved official purposes. ● **Data security** is a top priority during preparation of NASS reports. ● Published statistics from NASS surveys and censuses **will not** disclose reported data from an individual.

Address Service Requested

Official Business

Austin, Texas 78767

P.O. Box 70

Office

Southern Plains Regional Field

USDA-NASS