



# Cattle Inventory

Southern Plains Regional Field Office · Post Office Box 70, Austin, Texas 78767 · 800-626-3142 · [www.nass.usda.gov](http://www.nass.usda.gov)

Cooperating with the Oklahoma Department of Agriculture, Food and Forestry and Texas Department of Agriculture

January 31, 2023

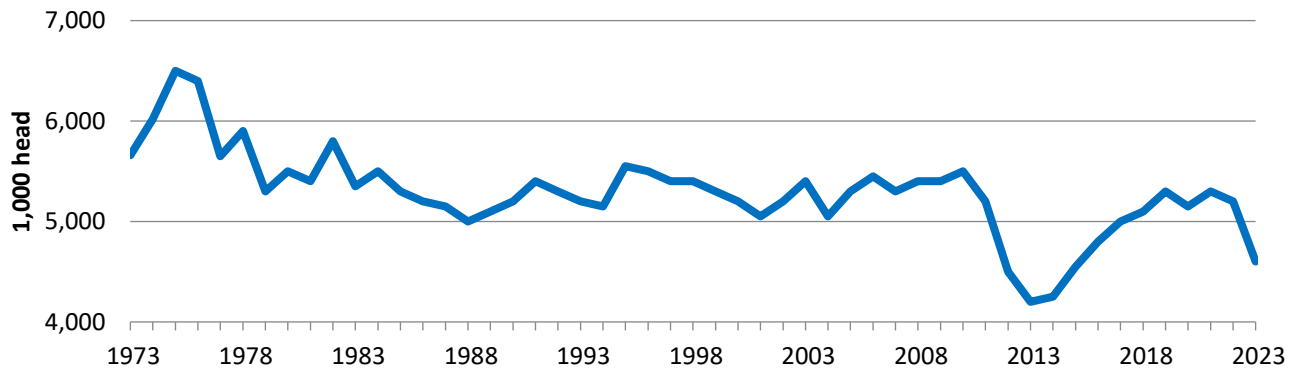
Contact: Jenna Bates or Cameron Willis

Estimates in this report are the result of data collected during the January Cattle Survey from a random sample of producers across the nation. Survey procedures ensured that all cattle producers, regardless of size, had a chance to be included in the survey. Data provided by Oklahoma and Texas producers are the foundation of these estimates made for the Southern Plains Region. We would like to thank all who responded to the survey and made these estimates possible.

Inventory and calf crop estimates were reviewed using official slaughter data, import and export data, and the relationship of the current survey indications to previous surveys. Revisions to previous estimates are made to improve year to year and item to item relationships.

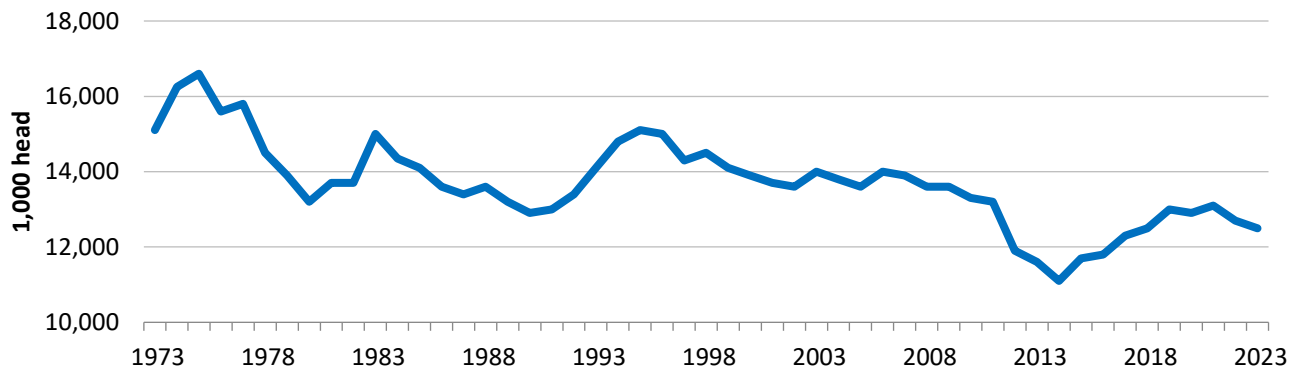
The inventory of Oklahoma cattle and calves totaled 4.60 million head on January 1, 2023, down 12 percent from last year's inventory. Oklahoma makes up 5 percent of the total United States inventory.

### Oklahoma All Cattle Inventory

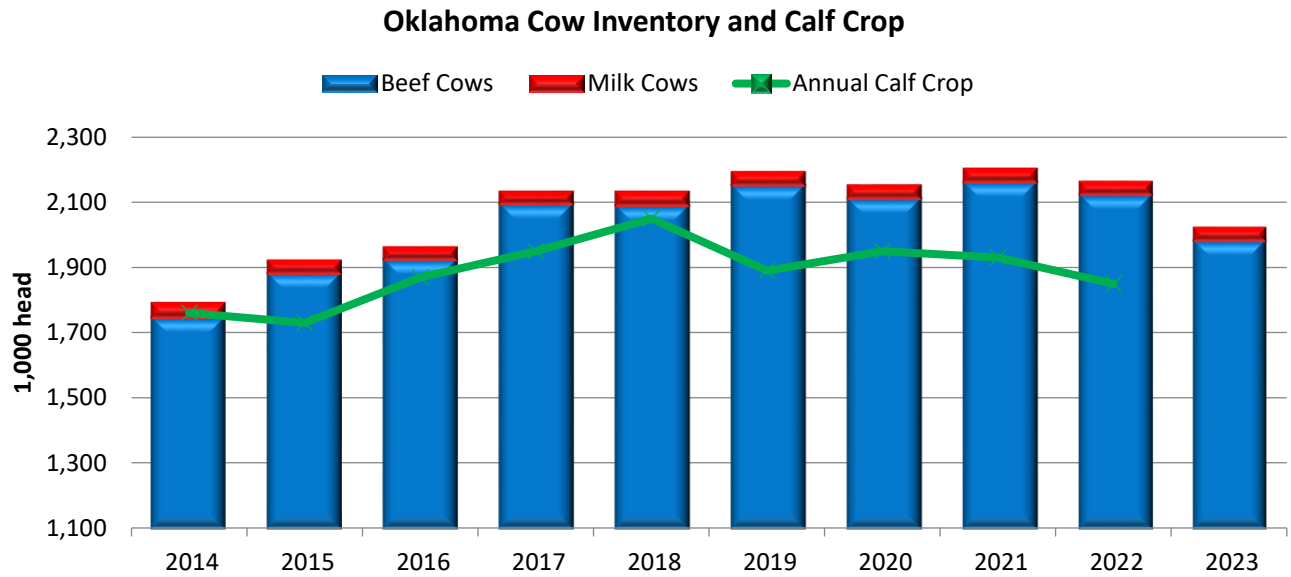


The inventory of Texas cattle and calves totaled 12.5 million head on January 1, 2023, down 2 percent from last year's inventory. Texas continues to rank first in the nation in total number of cattle and calves with 14 percent of the total United States inventory.

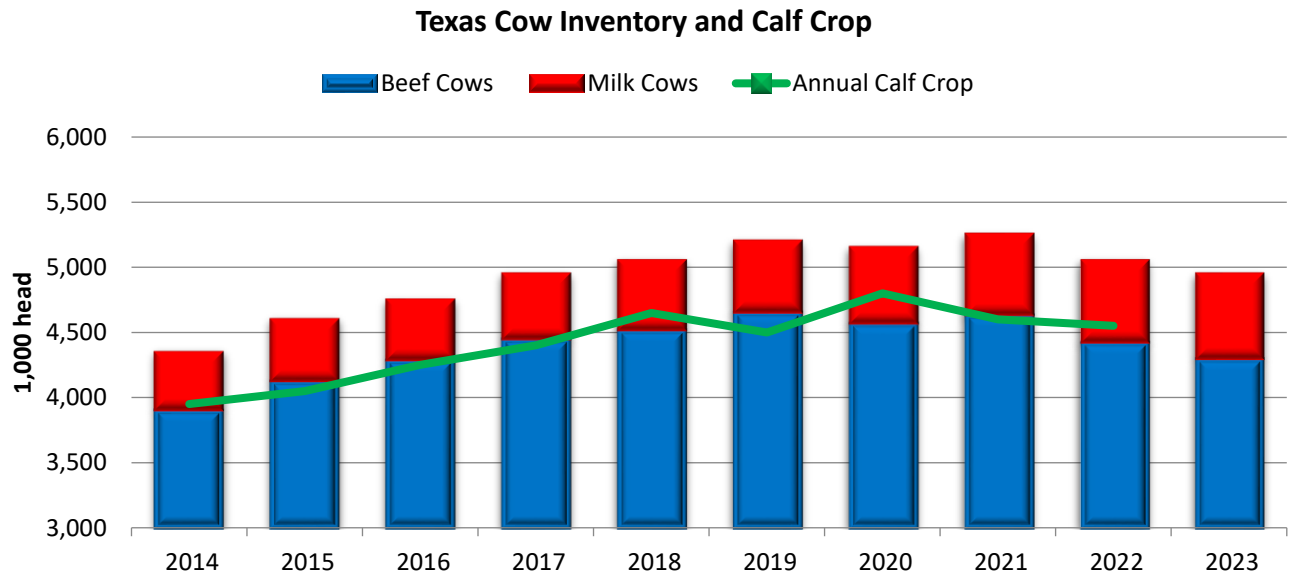
### Texas All Cattle Inventory



Total inventory of all cows that have calved in Oklahoma was 2.02 million head, 6 percent below last year's total. Beef cow inventory, at 1.98 million head, was down 7 percent from 2022. Milk cow inventory, at 39.0 thousand head, was unchanged from the 2022 total of 39.0 thousand head.

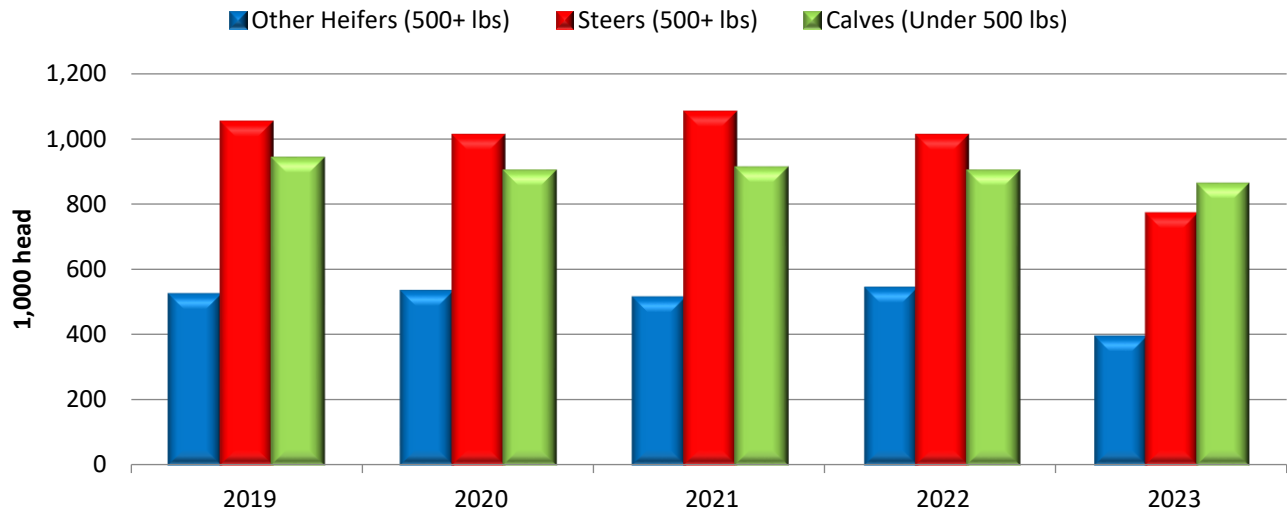


Total inventory of all cows that have calved in Texas was 4.95 million head, 2 percent below last year's total. Beef cow inventory, at 4.30 million head, was down 3 percent from 2022. Milk cow inventory, at 650 thousand head, was up 25 thousand head from the 2022 total of 625 thousand head.



Inventory of all heifers 500 pounds and over in Oklahoma totaled 800 thousand on January 1, 2023, 17 percent below 2022. Beef replacement heifers, at 390 thousand head, is 3 percent lower than 2022. Milk replacement heifers totaled 20.0 thousand head, unchanged from last year.

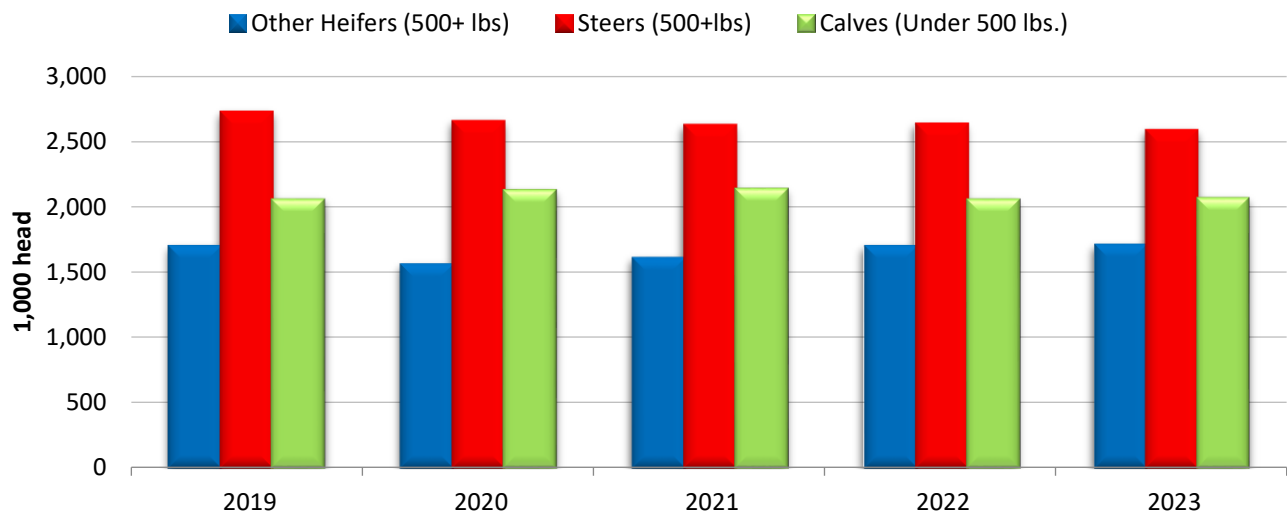
### Oklahoma Feeder Cattle Supply



Oklahoma inventory of steers 500 pounds and over totaled 770 thousand head on January 1, 2023, down 24 percent from last year. Inventory of calves less than 500 pounds, at 860 thousand head, is 4 percent below last year's total. The 2022 calf crop totaled 1.85 million head, 4 percent lower than the 2021 calf crop.

Inventory of all heifers 500 pounds and over in Texas totaled 2.58 million on January 1, 2023, 2 percent below 2022. Beef replacement heifers, at 640 thousand head, is 10 percent lower than 2022. Milk replacement heifers totaled 240 thousand head, unchanged from last year.

### Texas Feeder Cattle Supply



Texas inventory of steers 500 pounds and over totaled 2.58 million head on January 1, 2023, down 2 percent from last year. Inventory of calves less than 500 pounds, at 2.06 million head, is slightly above last year's total. The 2022 calf crop totaled 4.55 million head, 1 percent lower than the 2021 calf crop.

**January Cattle Inventory and Calf Crop  
Oklahoma, Texas, and United States**

Item	Oklahoma		Texas		United States	
	2022	2023	2022	2023	2022	2023
	<i>1,000 head</i>	<i>1,000 head</i>	<i>1,000 head</i>	<i>1,000 head</i>	<i>1,000 head</i>	<i>1,000 head</i>
All Cattle and Calves.....	5,200	4,600	12,700	12,500	92,077	89,274
Cows & Heifers that have calved.....	2,160	2,020	5,050	4,950	39,360	38,320
Beef Cows.....	2,121	1,981	4,425	4,300	29,983	28,918
Milk Cows.....	39	39	625	650	9,377	9,403
Heifers 500 pounds and over .....						
Beef Replacement.....	400	390	710	640	5,482	5,164
Milk Replacement.....	20	20	240	240	4,441	4,337
Other Heifers.....	540	390	1,690	1,700	9,994	9,672
Steers 500 pounds and over .....	1,010	770	2,630	2,580	16,705	16,132
Bulls 500 pounds and over .....	170	150	330	330	2,110	2,029
Calves under 500 pounds .....	900	860	2,050	2,060	13,986	13,621
Calf Crop <sup>1</sup> .....	1,930	1,850	4,600	4,550	35,166	34,465

<sup>1</sup> Previous year.

**U.S. Highlights:** The United States inventory of all cattle and calves totaled 89.3 million head on January 1, 3 percent below last year's inventory of 92.1 million head.

All cows and heifers that have calved totaled 38.3 million head, down 3 percent from the 39.4 million on January 1, 2022. Beef cows totaled 28.9 million head, down 4 percent from a year ago, while milk cows were up slightly from a year ago at 9.40 million head. Beef replacement heifers, at 5.16 million head, were down 6 percent from the previous year. Milk replacement heifer numbers were down 2 percent to 4.34 million head. The 2022 calf crop was estimated at 34.5 million head, down 2 percent from 2021.

*NASS provides accurate, timely, useful and objective statistics in service to U.S. agriculture. In order to view the full national report, please visit the following website: [www.nass.usda.gov/Publications/](http://www.nass.usda.gov/Publications/).*