



Quarterly Grain Stocks

Southern Plains Regional Field Office · Post Office Box 70, Austin, Texas 78767 · 800-626-3142 · www.nass.usda.gov

Cooperating with the Oklahoma Department of Agriculture, Food and Forestry and Texas Department of Agriculture

January 12, 2022

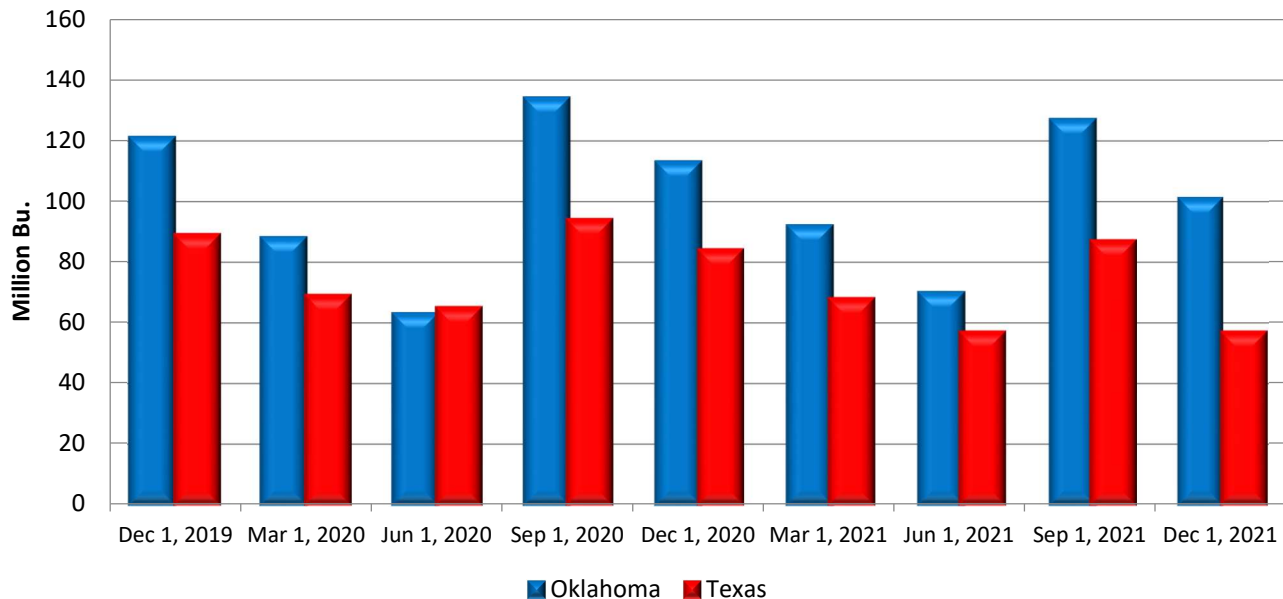
Contact: Eun Kang or Chris Rice

The grain stocks estimates are based on surveys conducted during the first two weeks of December. Data provided by Oklahoma and Texas operators are the foundation of the estimates for the Southern Plains region. Separate surveys are conducted to obtain the on-farm and off-farm estimates. We would like to thank all operators who responded to the survey. Results from the next quarterly survey will be made available on March 31, 2022.

Oklahoma stocks of wheat in all positions on December 1, at 101 million bushels, were down 11 percent from the 2020 level of 113 million bushels. Off-farm wheat stocks, at 96.8 million, bushels were 10 percent lower than December 1, 2020.

Texas stocks of wheat in all positions on December 1, at 57.5 million bushels, were down 32 percent from the 2020 level of 84.2 million bushels. Off-farm wheat stocks, at 56.1 million bushels, were 32 percent lower than December 1, 2020.

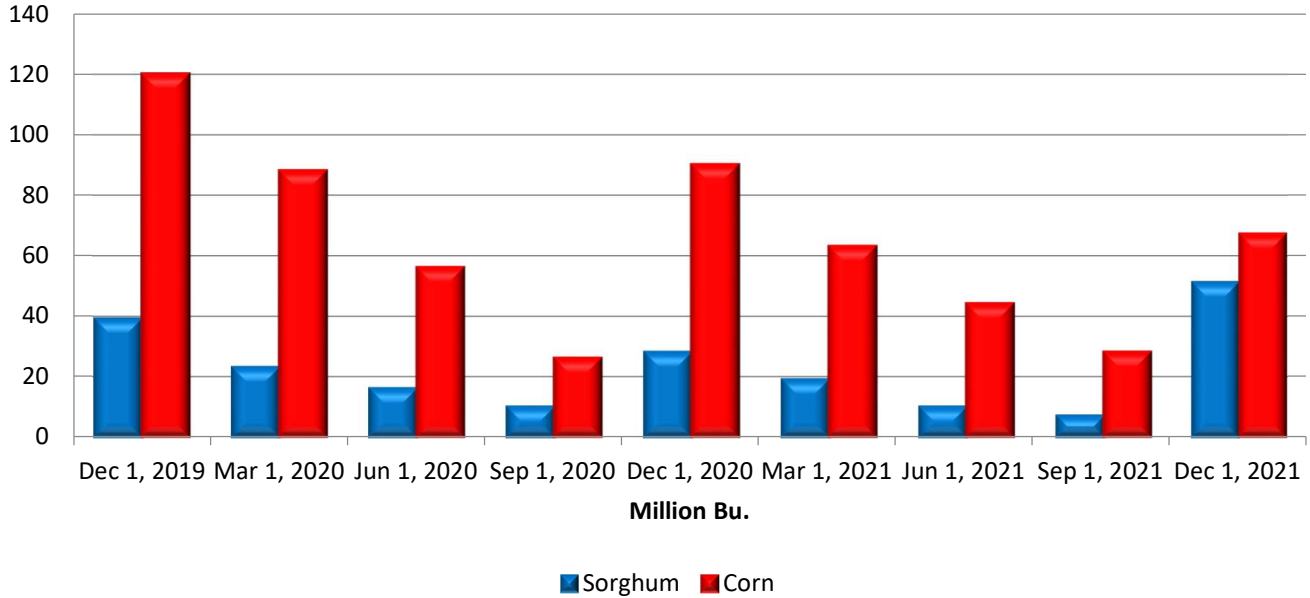
Quarterly Wheat Stocks All Positions



Texas sorghum stocks in all positions on December 1 totaled 53.1 million bushels, up 70 percent from the previous year. Off-farm sorghum stocks, at 51.4 million bushels, were 86 percent above December 1, 2020.

Texas off-farm corn stocks on December 1, 2021, at 66.8 million bushels, were down 25 percent from a year earlier. On-farm corn stocks are not published for Texas.

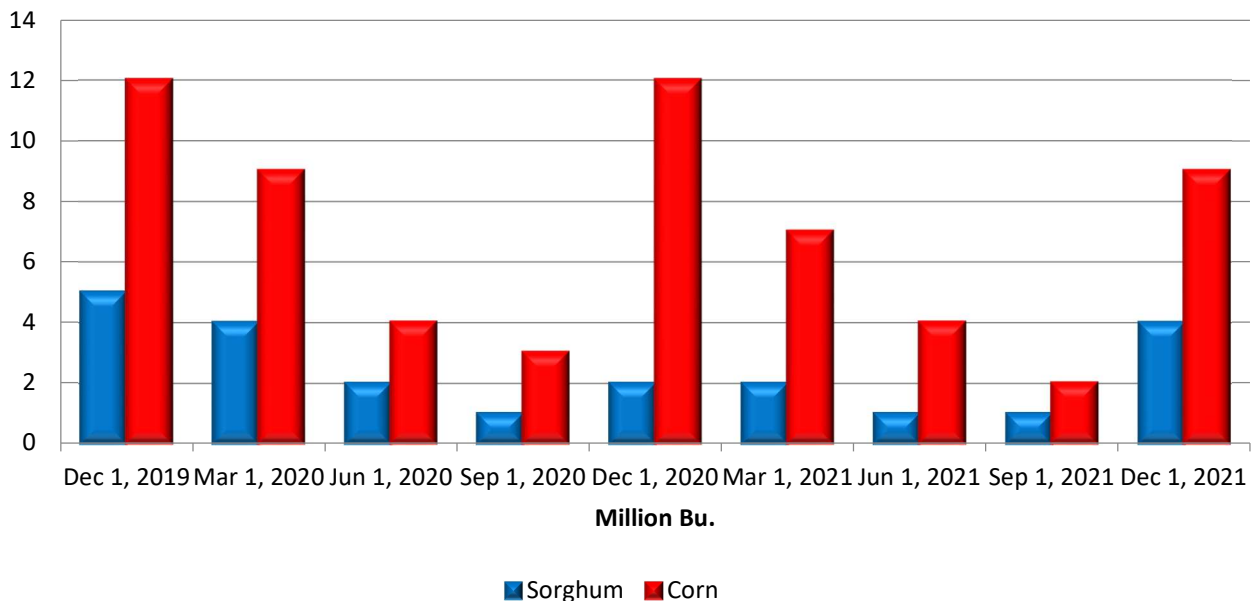
Texas Quarterly Stocks Sorghum and Corn, Off-farm



Oklahoma off-farm sorghum stocks, at 3.98 million bushels, were 76 percent above December 1, 2020. On-farm sorghum stocks are not published for the state.

Oklahoma off-farm corn stocks on December 1, 2021, at 9.12 million bushels, were down 24 percent from a year earlier. On-farm corn stocks are not published for Oklahoma.

Oklahoma Quarterly Stocks Sorghum and Corn, Off-farm



Stocks of Grain – Oklahoma, Texas, and United States: December 1, 2021 and Comparable Quarters

Item	Off farm Total ¹			Total all positions		
	Dec 1, 2020	Sep 1, 2021	Dec 1, 2021	Dec 1, 2020	Sep 1, 2021	Dec 1, 2021
	<i>1,000 bushels</i>	<i>1,000 bushels</i>	<i>1,000 bushels</i>	<i>1,000 bushels</i>	<i>1,000 bushels</i>	<i>1,000 bushels</i>
Oklahoma						
Barley	36	28	19	36	28	19
Corn	11,942	2,259	9,119	(D)	(D)	(D)
Oats	116	89	99	(D)	(D)	(D)
Soybeans	(D)	(D)	(D)	(D)	(D)	(D)
Sorghum	2,262	649	3,975	(D)	(D)	(D)
Wheat	107,540	115,042	96,753	113,240	127,042	100,753
Texas						
Barley	(D)	(D)	(D)	(D)	(D)	(D)
Corn	89,651	28,280	66,814	(D)	(D)	(D)
Oats	361	329	(D)	(D)	(D)	(D)
Soybeans	3,123	114	762	(D)	(D)	(D)
Sorghum	27,679	7,174	51,378	31,279	7,294	53,078
Wheat	81,989	80,630	56,065	84,189	87,230	57,465
United States						
Barley	63,437	57,716	54,492	148,627	135,396	97,612
Corn	4,247,750	839,612	4,413,102	11,293,750	1,234,512	11,647,102
Oats	33,712	29,912	36,982	62,542	62,062	55,512
Soybeans	1,638,240	188,879	1,627,283	2,946,740	256,979	3,149,283
Sorghum	198,386	19,730	259,687	219,686	20,318	289,137
Wheat	1,219,220	1,354,347	1,116,691	1,702,690	1,773,537	1,389,981

(D) Withheld to avoid disclosing data for individual operations.

¹ Includes stocks at mills, elevators, warehouses, terminals, and processors.

U.S. Highlights: Total stocks of corn in the United States on December 1, 2021 were 11.6 billion bushels, 3 percent higher than December 1, 2020. All wheat stocks were estimated at 1.39 billion bushels in all positions, down 18 percent from last December. U.S. stocks of sorghum totaled 289 million bushels, 32 percent above December 1, 2020. Stocks of soybeans in all positions totaled 3.15 billion bushels, up 7 percent from last year.

NASS provides accurate, timely, useful and objective statistics in service to U.S. agriculture. In order to view the full national report, please visit the following website: www.nass.usda.gov/Publications.