



Cattle Inventory

Southern Plains Regional Field Office · Post Office Box 70, Austin, Texas 78767 · 800-626-3142 · www.nass.usda.gov

Cooperating with the Oklahoma Department of Agriculture, Food and Forestry and Texas Department of Agriculture

January 31, 2022

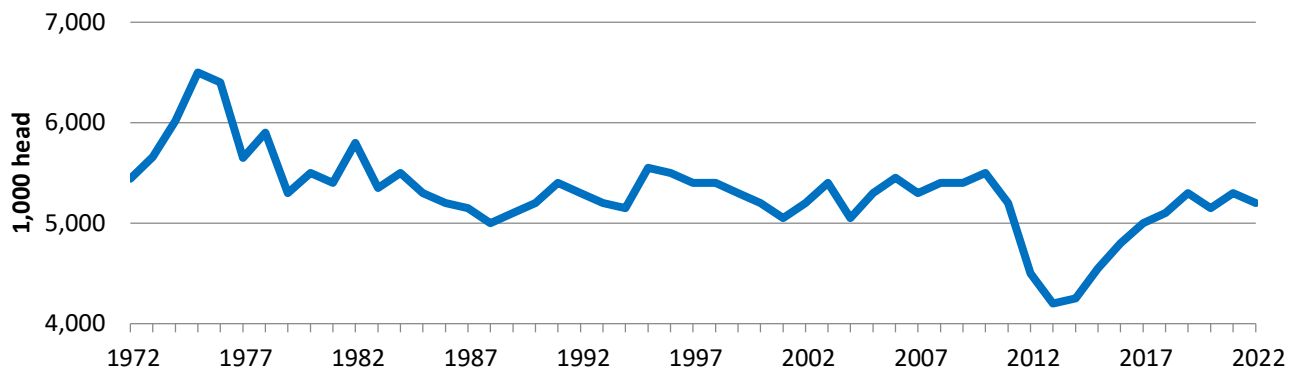
Contact: Bret Holliman or Cameron Willis

Estimates in this report are the result of data collected during the January Cattle Survey from a random sample of producers across the nation. Survey procedures ensured that all cattle producers, regardless of size, had a chance to be included in the survey. Data provided by Oklahoma and Texas producers are the foundation of these estimates made for the Southern Plains Region. We would like to thank all who responded to the survey and made these estimates possible.

Inventory and calf crop estimates were reviewed using official slaughter data, import and export data, and the relationship of the current survey indications to previous surveys. Revisions to previous estimates are made to improve year to year and item to item relationships.

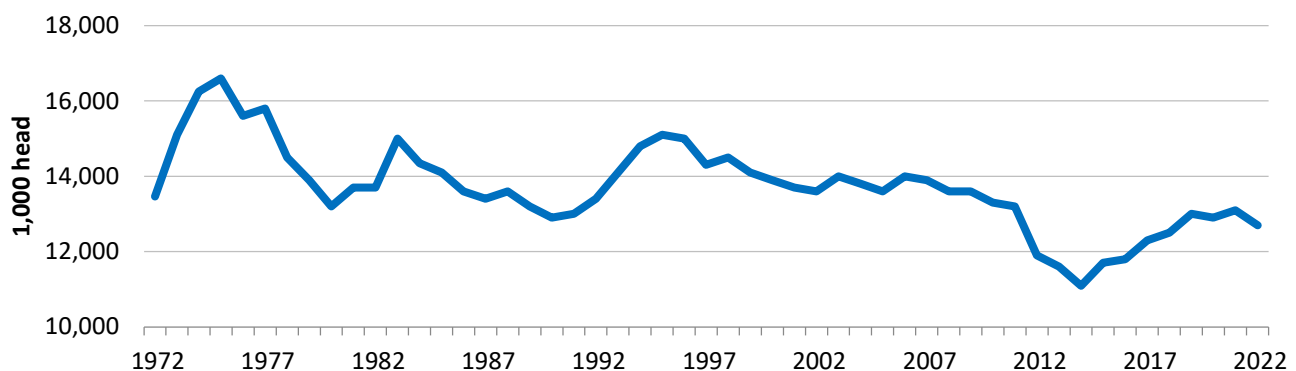
The inventory of Oklahoma cattle and calves totaled 5.20 million head on January 1, 2022, down 2 percent from last year's inventory. Oklahoma makes up 6 percent of the total United States inventory.

Oklahoma All Cattle Inventory

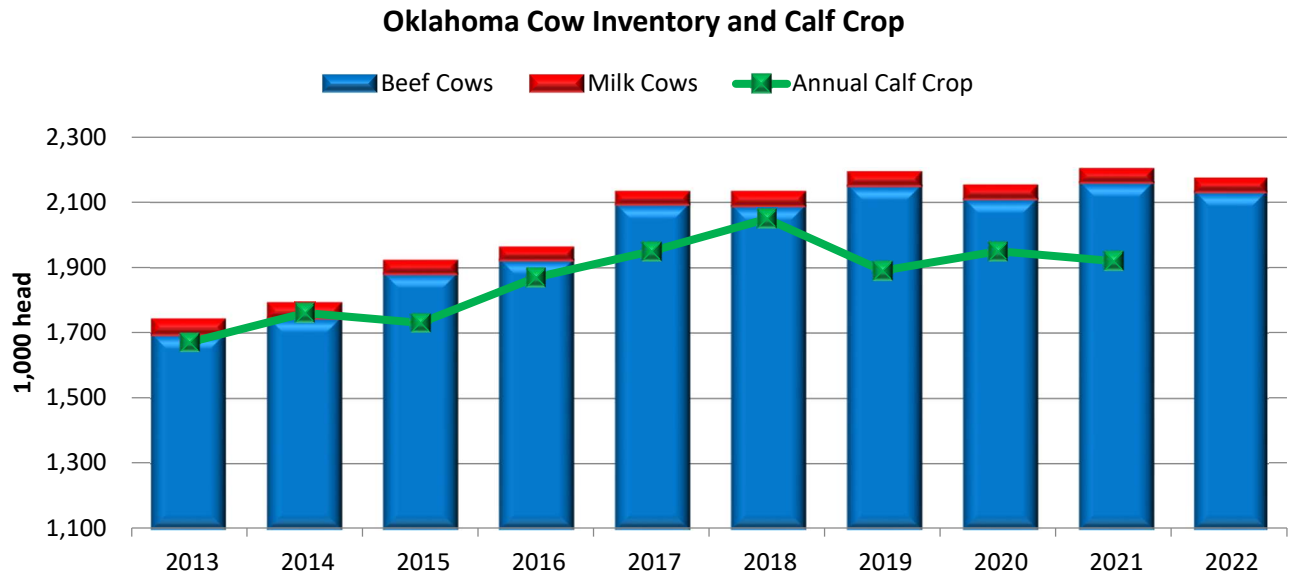


The inventory of Texas cattle and calves totaled 12.7 million head on January 1, 2022, down 3 percent from last year's inventory. Texas continues to rank first in the nation in total number of cattle and calves with 14 percent of the total United States inventory.

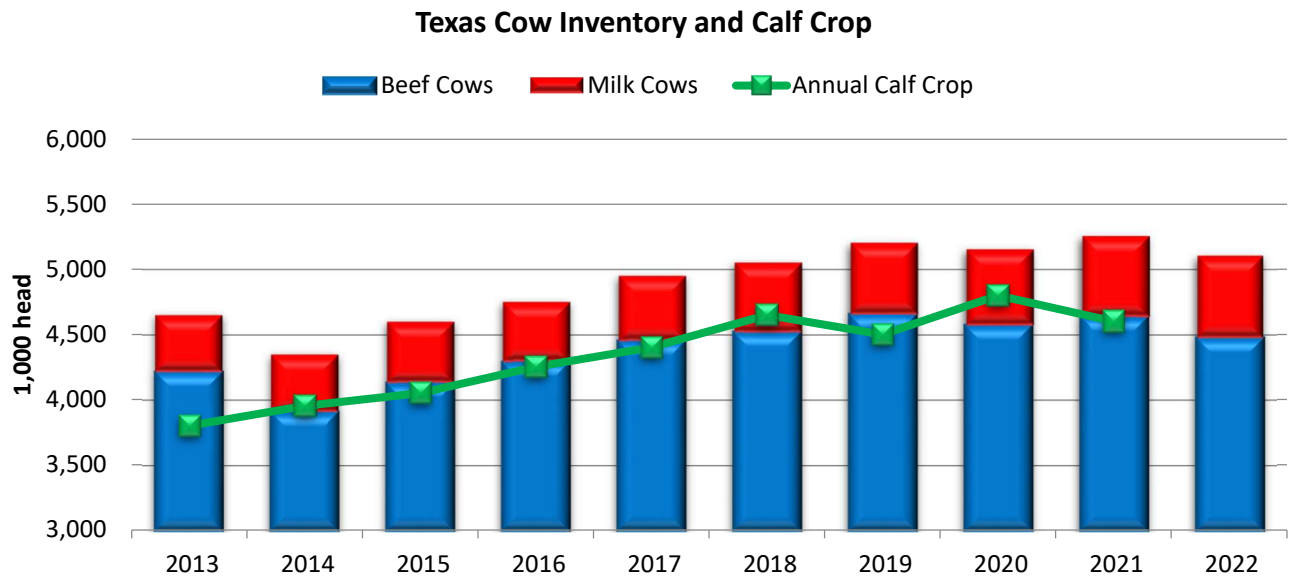
Texas All Cattle Inventory



Total inventory of all cows that have calved in Oklahoma was 2.17 million head, 1 percent below last year's total. Beef cow inventory, at 2.13 million head, was down 1 percent from 2021. Milk cow inventory, at 39.0 thousand head, was down 2 thousand head from the 2021 total of 41.0 thousand head.

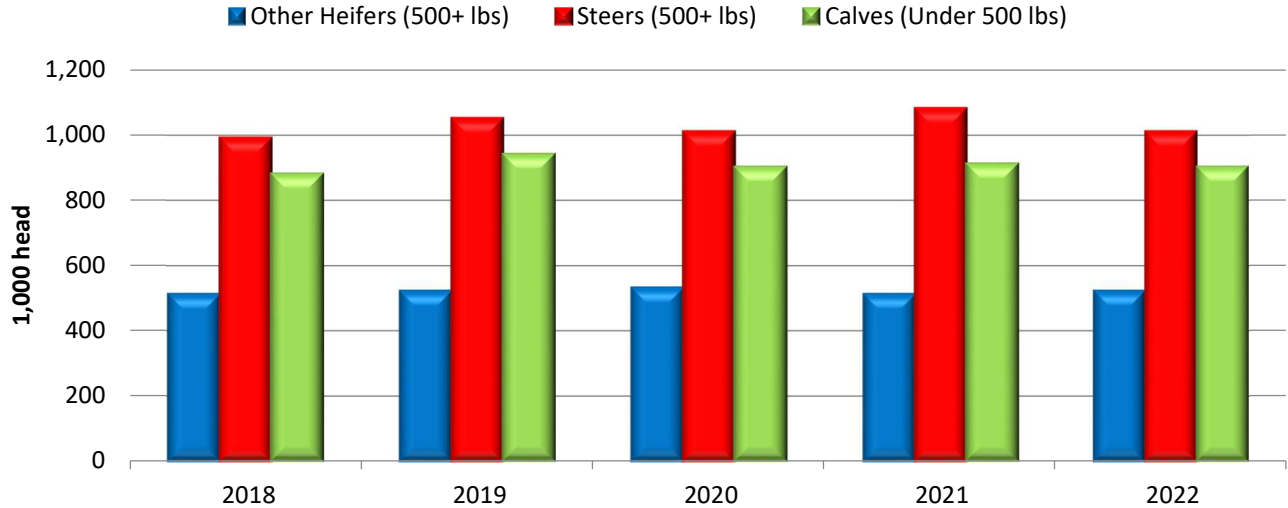


Total inventory of all cows that have calved in Texas was 5.10 million head, 3 percent below last year's total. Beef cow inventory, at 4.48 million head, was down 3 percent from 2021. Milk cow inventory, at 625 thousand head, was up 10 thousand head from the 2021 total of 615 thousand head.



Inventory of all heifers 500 pounds and over in Oklahoma totaled 950 thousand on January 1, 2022, 1 percent above 2021. Beef replacement heifers, at 410 thousand head, is unchanged from 2021. Milk replacement heifers totaled 20.0 thousand head, unchanged from last year.

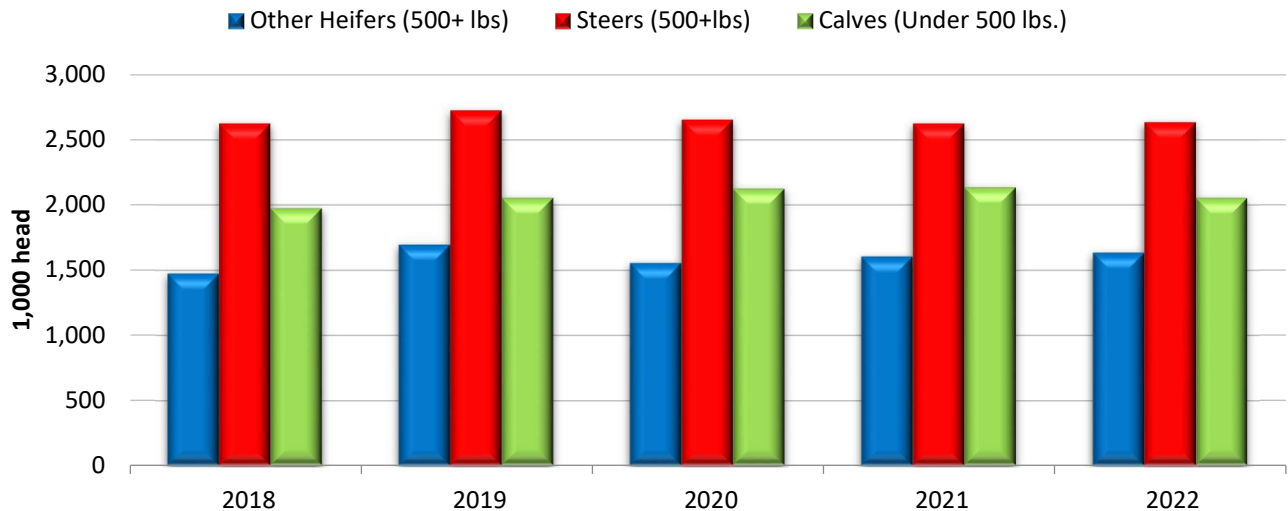
Oklahoma Feeder Cattle Supply



Oklahoma inventory of steers 500 pounds and over totaled 1.01 million head on January 1, 2022, down 6 percent from last year. Inventory of calves less than 500 pounds, at 900 thousand head, is 1 percent below last year's total. The 2021 calf crop totaled 1.92 million head, 2 percent lower than the 2020 calf crop.

Inventory of all heifers 500 pounds and over in Texas totaled 2.59 million on January 1, 2022, 5 percent below 2021. Beef replacement heifers, at 720 thousand head, is 13 percent lower than 2021. Milk replacement heifers totaled 240 thousand head, down 23 percent from last year.

Texas Feeder Cattle Supply



Texas inventory of steers 500 pounds and over totaled 2.63 million head on January 1, 2022, up slightly from last year. Inventory of calves less than 500 pounds, at 2.05 million head, is 4 percent below last year's total. The 2021 calf crop totaled 4.60 million head, 4 percent lower than the 2020 calf crop.

**January Cattle Inventory and Calf Crop
Oklahoma, Texas, and United States**

Item	Oklahoma		Texas		United States	
	2021	2022	2021	2022	2021	2022
	<i>1,000 head</i>	<i>1,000 head</i>	<i>1,000 head</i>	<i>1,000 head</i>	<i>1,000 head</i>	<i>1,000 head</i>
All Cattle and Calves.....	5,300	5,200	13,100	12,700	93,790	91,902
Cows & Heifers that have calved.....	2,200	2,170	5,250	5,100	40,286	39,500
Beef Cows.....	2,159	2,131	4,635	4,475	30,844	30,125
Milk Cows.....	41	39	615	625	9,442	9,375
Heifers 500 pounds and over						
Beef Replacement.....	410	410	830	720	5,803	5,612
Milk Replacement.....	20	20	310	240	4,609	4,451
Other Heifers.....	510	520	1,600	1,630	9,789	9,714
Steers 500 pounds and over	1,080	1,010	2,620	2,630	16,788	16,580
Bulls 500 pounds and over.....	170	170	360	330	2,211	2,110
Calves under 500 pounds	910	900	2,130	2,050	14,305	13,936
Calf Crop ¹	1,950	1,920	4,800	4,600	35,496	35,085

¹ Previous year.

U.S. Highlights: The United States inventory of all cattle and calves totaled 91.9 million head on January 1, 2 percent below last year's inventory of 93.8 million head.

All cows and heifers that have calved totaled 39.5 million head, down 2 percent from the 40.3 million on January 1, 2021. Beef cows totaled 30.1 million head, down 2 percent from a year ago, while milk cows were down 1 percent from a year ago at 9.38 million head. Beef replacement heifers, at 5.61 million head, were down 3 percent from the previous year. Milk replacement heifer numbers were down 3 percent to 4.45 million head. The 2021 calf crop was estimated at 35.1 million head, down 1 percent from 2020.

NASS provides accurate, timely, useful and objective statistics in service to U.S. agriculture. In order to view the full national report, please visit the following website: www.nass.usda.gov/Publications/.