



Texas Crop Progress and Condition

Southern Plains Regional Field Office
Post Office Box 70 Austin, Texas 78767
(800) 626-3142 · FAX (855) 270-2725 · www.nass.usda.gov/tx

Issue: TX-CW4324

Weekly Summary for November 4 - November 10

Released: November 12, 2024

Most parts of the state received anticipated rainfall. Rainfall ranged from trace amounts up to 10 inches, with the Southern Low Plains and the Cross Timbers receiving the most. Drought conditions ranged from none to exceptional drought with areas in the Trans-Pecos being the driest. There was an average of 4.1 days suitable for fieldwork.

Small Grains: Rain provided much needed moisture for small grain seeding and emergences. In the Northern High Plains and the Cross Timbers, winter wheat planting was delayed due to weather. In the Southern Low Plains and South Texas, producers were planting winter wheat ahead of the rain. In the Cross Timbers, the Blacklands, and the Edwards Plateau, winter wheat was emerging. Winter wheat planted reached 81 percent, up 5 points from the previous week, but down 4 points from normal. Winter wheat emerged reached 63 percent, up 11 points from the previous week, but down 5 points from normal. In the Northern High Plains, oat planting was delayed due to wet fields. In South East Texas, oats were emerging. Oats planted reached 86 percent, up 4 points from the previous week and up 10 points from normal. Oats emerged reached 75 percent, up 6 points from the previous week, and up 17 points from normal.

Row Crops: In the Southern Low Plains, the Trans-Pecos, and South Central Texas, producers were harvesting cotton. In the Northern High Plains and the Northern Low Plains, cotton harvest was delayed due to rain. Cotton harvested reached 65 percent, up 7 points from the previous week, and up 9 points from normal. In South Texas, producers continued harvesting peanuts, while in the Northern Low Plains, producers continued delaying harvest due to rain. Peanuts harvested reached 77 percent, up 6 points from the previous week, and up 14 points from normal. Soybeans harvested reach 95 percent, up 5 points from the previous week and from normal.

Fruit, Vegetable, and Specialty Crops: In the Blacklands and the Lower Valley, producers cool season vegetables were progressing. In the Trans-Pecos, pecans were maturing. In the Cross Timbers, producers were harvesting pecans. In the Lower Valley, producers continued to harvest citrus.

Range and Pasture: In most parts of the state, operators were hopeful that the rain would improve cool season grasses and forages. In South Central Texas, producers were planting winter pasture in areas that received rain. In the Lower Valley and South Texas, producers were baling hay. Producers continued supplemental feeding of livestock. Pasture and range conditions were rated at 63 percent, poor to very poor.

**Crop Progress by Percent
For Week Ending November 10, 2024**

Stage	Percentage of Acreage			
	Current Week	Previous Week	Previous Year	5 Year Average
Upland Cotton				
Harvested	65	58	53	56
Peanuts				
Harvested	77	71	63	63
Soybeans				
Harvested	95	90	89	90
Winter Wheat				
Planted	81	76	81	85
Emerged	63	52	64	68
Oats				
Planted	86	82	23	76
Emerged	75	69	-	58

- Represents zero.

**Crop Condition by Percent
For Week Ending November 10, 2024**

Crop	Percent of Acreage					Index ¹	
	Excellent	Good	Fair	Poor	Very Poor	2024	2023
Upland Cotton	2	16	27	33	22	42	33
Peanuts	3	47	46	3	1	74	30
Soybeans	1	33	38	24	4	60	61
Winter Wheat	5	28	33	19	15	56	(NA)
Oats	1	15	25	30	29	39	64
Range and Pasture	2	12	23	34	29	37	40

¹ The formula for the condition index is $I = (5V + 25P + 60F + 90G + 110E)/100$ where I = crop condition index and V, P, F, G, E = percentage of crop rated very poor, poor, fair, good, excellent.

(NA) Not available.

**Soil Moisture and Days Suitable by District
For Week Ending November 10, 2024**

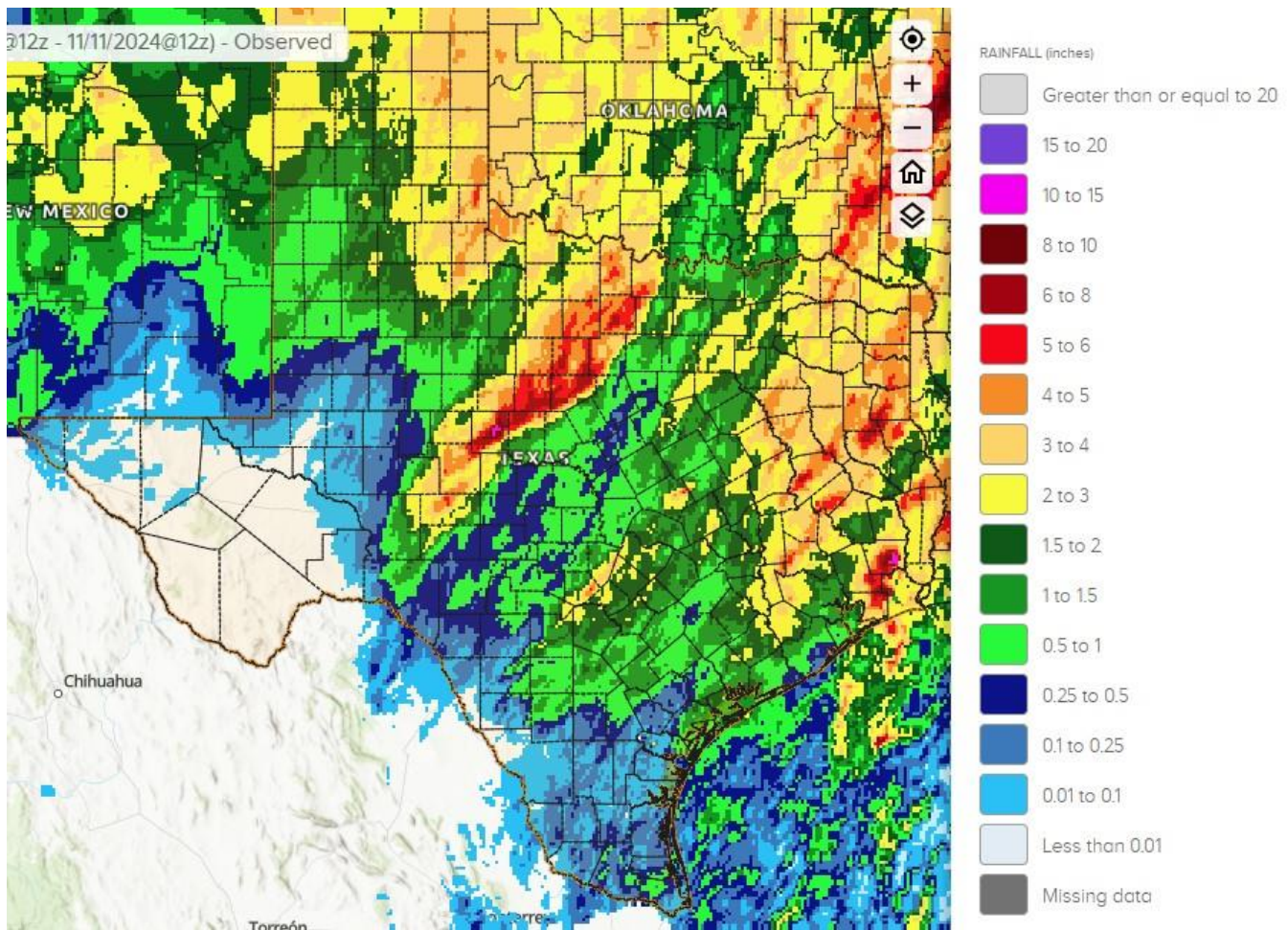
District	Subsoil Moisture Condition by District				Topsoil Moisture Condition by District				Days Suitable for Fieldwork
	Percentage of Acreage				Percentage of Acreage				
	Very Short	Short	Adequate	Surplus	Very Short	Short	Adequate	Surplus	
11	2	13	71	14	6	14	45	35	3.0
12	62	22	14	2	52	32	15	1	4.3
21	6	55	36	3	2	18	58	22	2.0
22	0	20	73	7	0	15	70	15	3.8
30	11	37	37	15	13	30	42	15	4.6
40	19	35	45	1	12	23	59	6	3.6
51	9	37	52	2	6	34	55	5	5.8
52	16	51	25	8	12	47	38	3	5.6
60	20	80	0	0	20	80	0	0	7.0
70	32	24	24	20	33	22	24	21	5.9
81	26	32	42	0	34	25	41	0	6.1
82	100	0	0	0	100	0	0	0	3.8
90	29	28	24	19	24	30	27	19	2.3
96	33	45	22	0	24	51	25	0	6.2
97	3	34	61	2	41	30	29	0	7.0
State	23	28	42	7	22	25	40	13	4.1

Texas Agricultural Districts

- 11 Northern High Plains
- 12 Southern High Plains
- 21 Northern Low Plains
- 22 Southern Low Plains
- 30 Cross Timbers
- 40 Blacklands
- 51 North East
- 52 South East
- 60 Trans-Pecos
- 70 Edwards Plateau
- 81 South Central
- 82 Coastal Bend
- 90 Upper Coast
- 96 South
- 97 Lower Valley

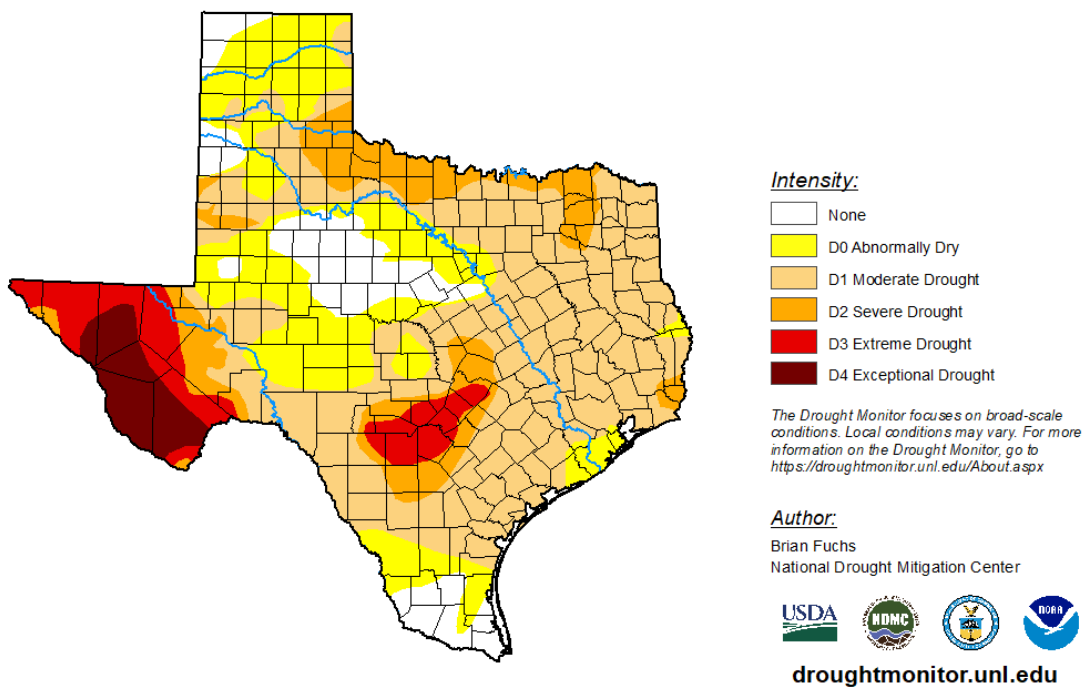


Seven Day Observed Regional Precipitation, November 10, 2024



Source: National Weather Service, www.nws.noaa.gov

Drought Monitor, Map Released: November 7, 2024



Source: National Drought Mitigation Center, a partnership with USDA, U.S. Department of Commerce/NOAA, <http://droughtmonitor.unl.edu>