



## Texas Crop Progress and Condition

Southern Plains Regional Field Office  
Post Office Box 70 Austin, Texas 78767  
(800) 626-3142 · FAX (855) 270-2725 · [www.nass.usda.gov/tx](http://www.nass.usda.gov/tx)

**Issue: TX-CW4224      Weekly Summary for October 28 - November 3      Released: November 4, 2024**

Some parts of the state received much needed rainfall. Rainfall ranged from trace amounts up to 6 inches, with the Southern High Plains and the Upper Coast receiving the most rain. Drought conditions ranged from none to exceptional drought with areas in the Trans-Pecos being the driest. There was an average of 5.7 days suitable for fieldwork.

**Small Grains:** In the Southern High Plains, the Southern Low Plains, and the Blacklands, producers were planting winter wheat ahead of expected rainfall. Winter wheat planted reached 76 percent, up 6 points from the previous week, but down 4 points from normal. Winter wheat emerged reached 52 percent, up 6 points from the previous week, but down 7 points from normal. In South Central Texas, producers were dry planting oats ahead of expected rainfall. Oats planted reached 82 percent, up 4 points from the previous week and up 11 points from normal. Oats emerged reached 69 percent, up 22 points from the previous week, and up 20 points from normal.

**Row Crops:** In the Southern High Plains, the Northern Low Plains, and the Edwards Plateau, some cotton producers were shredding cotton due to failed crop. Cotton harvested reached 58 percent, up 10 points from the previous week, and up 9 points from normal. In South Texas, producers were harvesting peanuts, while in the Northern Low Plains, the peanut harvest was delayed due to rain. Peanuts mature reached 96 percent, up 6 points from the previous week, and up 22 points from normal. Peanuts harvested reached 71 percent, up 21 points from the previous week, and up 17 points from normal. Soybeans harvested reach 90 percent, up 7 points from the previous week, and up 5 points from normal.

**Fruit, Vegetable, and Specialty Crops:** In South Texas, producers continued planting onions, cabbage, and leafy green vegetables. In the Cross Timbers, producers were harvesting pecans, while producers in the Trans-Pecos were preparing to harvest pecans. In the Lower Valley, producers were harvesting cool season vegetables.

**Range and Pasture:** Pasture conditions remained dry. Producers were hopeful that recent rain showers will improve pasture conditions. In the Northern High Plains, producers were cutting and baling hay ahead of expected rain. Some producers in the state continued supplemental feeding of livestock. Pasture and range conditions were rated at 63 percent, poor to fair.

**Crop Progress by Percent  
For Week Ending November 3, 2024**

Stage	Percentage of Acreage			
	Current Week	Previous Week	Previous Year	5 Year Average
<b>Upland Cotton</b>				
Harvested	58	48	46	49
<b>Peanuts</b>				
Mature	96	90	88	74
Harvested	71	50	54	54
<b>Soybeans</b>				
Harvested	90	83	83	85
<b>Winter Wheat</b>				
Planted	76	70	77	80
Emerged	52	46	59	59
<b>Oats</b>				
Planted	82	78	23	71
Emerged	69	47	-	49

- Represents zero.

**Crop Condition by Percent  
For Week Ending November 3, 2024**

Crop	Percent of Acreage					Index <sup>1</sup>	
	Excellent	Good	Fair	Poor	Very Poor	2024	2023
Upland Cotton	2	16	27	33	22	42	30
Peanuts	3	47	46	3	1	74	69
Soybeans	1	33	38	24	4	60	61
Winter Wheat	3	21	38	20	18	51	66
Oats	1	14	29	10	46	36	(NA)
Range and Pasture	1	10	28	35	26	37	37

<sup>1</sup> The formula for the condition index is  $I = (110E + 90G + 60F + 25P + 5V)/100$  where I = crop condition index and E, G, F, P, V = percentage of crop rated very poor, poor, fair, good, excellent.

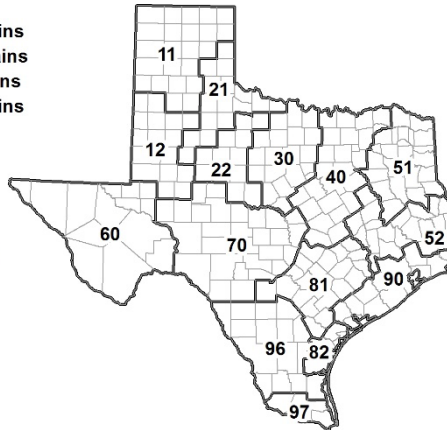
(NA) Not Available.

**Soil Moisture and Days Suitable by District  
For Week Ending November 3, 2024**

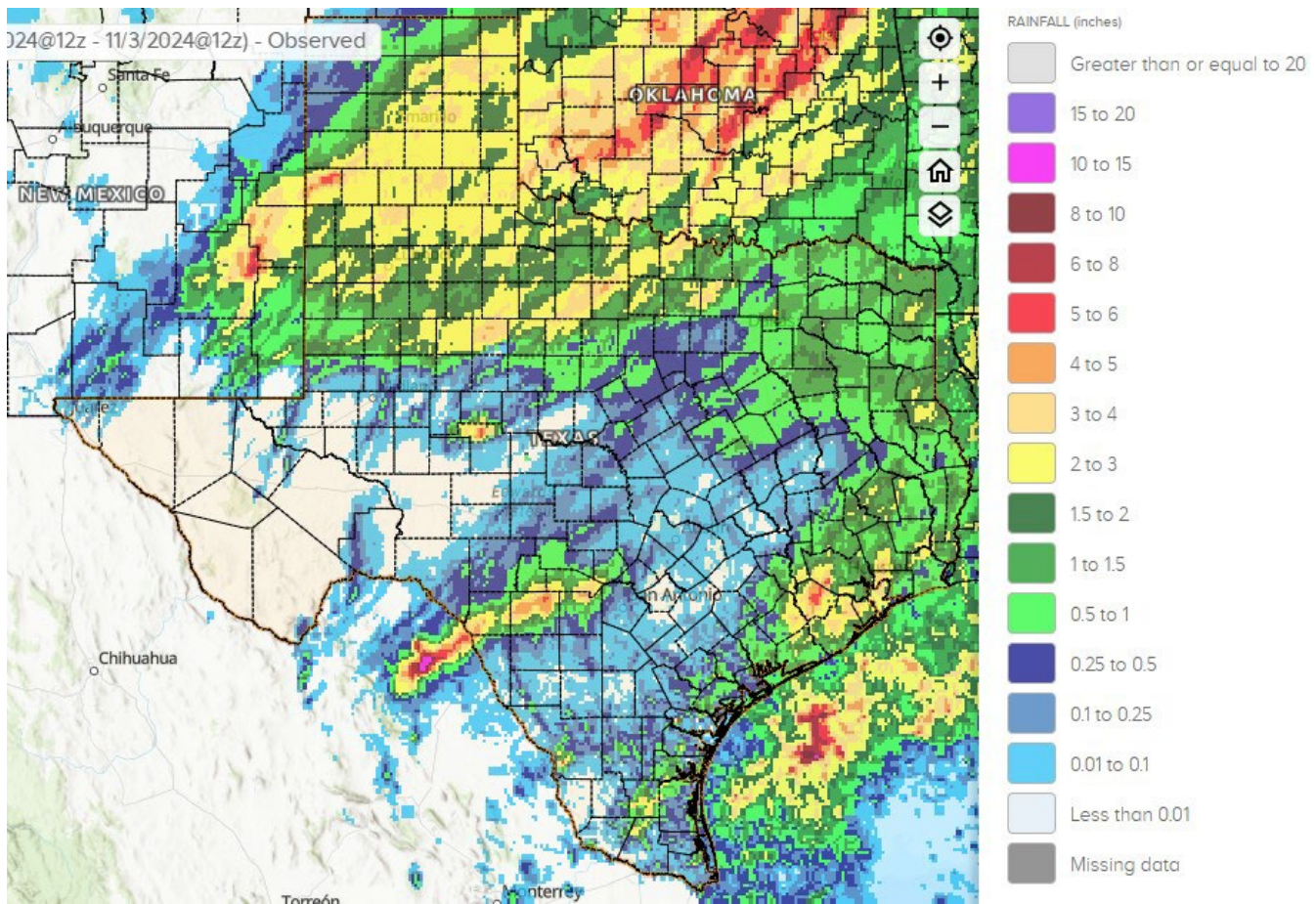
District	Subsoil Moisture Condition by District				Topsoil Moisture Condition by District				Days Suitable for Fieldwork
	Percentage of Acreage				Percentage of Acreage				
	Very Short	Short	Adequate	Surplus	Very Short	Short	Adequate	Surplus	
11	34	36	27	3	34	38	25	3	5.3
12	72	17	11	0	71	22	5	2	6.8
21	59	28	13	0	60	26	13	1	5.4
22	6	56	38	0	7	34	51	8	5.6
30	29	40	27	4	33	33	30	4	5.2
40	47	42	11	0	45	41	14	0	5.4
51	26	52	21	1	23	42	32	3	5.1
52	21	56	16	7	19	60	19	2	5.9
60	15	21	61	3	15	21	61	3	4.1
70	44	48	7	1	49	44	7	0	5.7
81	50	46	4	0	52	44	4	0	6.7
82	29	44	27	0	61	39	0	0	7.0
90	26	57	16	1	57	26	16	1	5.0
96	36	42	22	0	39	38	23	0	6.3
97	1	32	64	3	27	40	33	0	4.8
State	41	38	20	1	43	35	20	2	5.7

**Texas Agricultural Districts**

- 11 Northern High Plains
- 12 Southern High Plains
- 21 Northern Low Plains
- 22 Southern Low Plains
- 30 Cross Timbers
- 40 Blacklands
- 51 North East
- 52 South East
- 60 Trans-Pecos
- 70 Edwards Plateau
- 81 South Central
- 82 Coastal Bend
- 90 Upper Coast
- 96 South
- 97 Lower Valley

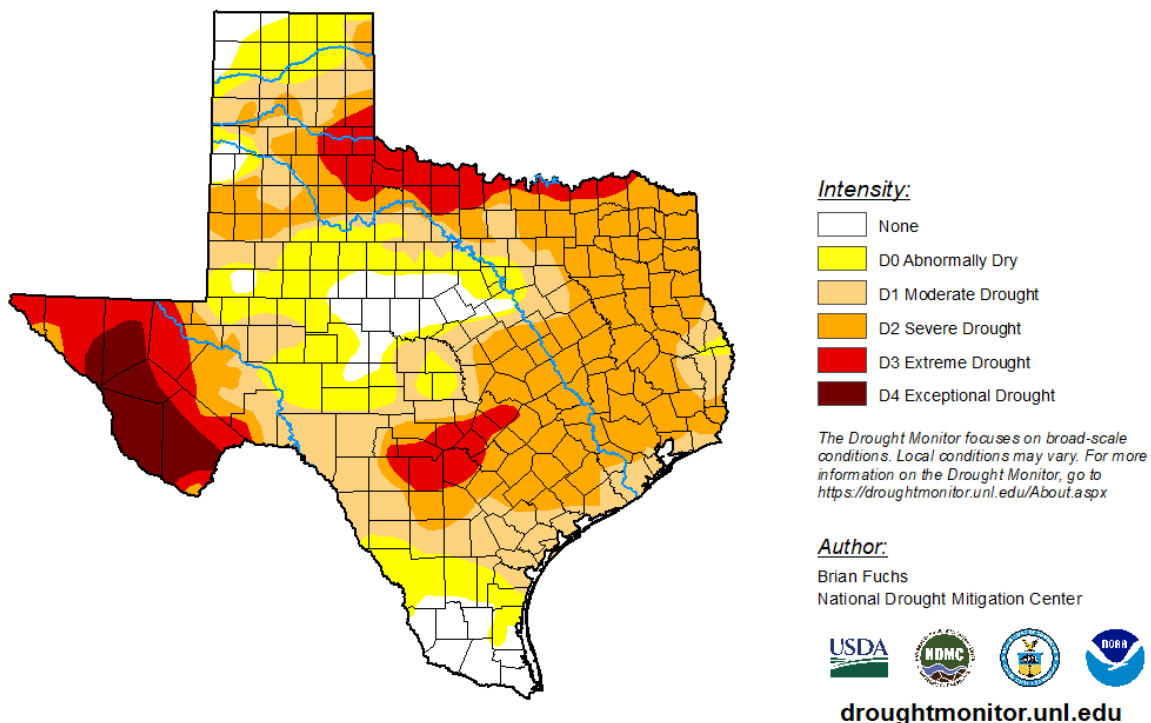


## Seven Day Observed Regional Precipitation, November 3, 2024



Source: National Weather Service, [www.nws.noaa.gov](http://www.nws.noaa.gov)

## Drought Monitor, Map Released: October 31, 2024



Source: National Drought Mitigation Center, a partnership with USDA, U.S. Department of Commerce/NOAA, <http://droughtmonitor.unl.edu>