



Texas Crop Progress and Condition

Southern Plains Regional Field Office
Post Office Box 70 Austin, Texas 78767
(800) 626-3142 · FAX (855) 270-2725 · www.nass.usda.gov/tx

Issue: TX-CW4124

Weekly Summary for October 21 - October 27

Released: October 28, 2024

Weather conditions remained dry with little to no rain throughout the state. Rainfall ranged from trace amounts up to 2 inches, with the Northern High Plains and the Lower Valley receiving the most rain. Drought conditions ranged from none to exceptional drought with areas in the Trans-Pecos being the driest. There was an average of 5.9 days suitable for fieldwork.

Small Grains: Despite dry conditions, some small grain producers continued to plant, while others were waiting for more moisture. In the Southern Low Plains and the Cross Timbers, producers were noticing army worms in emerged winter wheat. In the Edwards Plateau, irrigated winter wheat and oat were progressing. Winter wheat planted reached 70 percent, up 5 points from the previous week and from normal. Winter wheat emerged reached 46 percent, up 6 points from the previous week, but down 6 points from normal. In the Blacklands, emerged oats were drying out due to lack of moisture. Oats planted reached 78 percent, up 8 points from the previous week and up 12 points from normal. Oats emerged reached 47 percent, up 12 points from the previous week, and up 8 points from normal.

Row Crops: In some parts of the state, cotton producers continued harvesting cotton. In the Northern Low Plains and the Edwards Plateau, cotton producers were destroying failed crop. Cotton bolls opening reached 95 percent, up 3 points from the previous week and from normal. Cotton harvested reached 48 percent, up 5 points from the previous week and from normal. In the Cross Timbers and South Texas, producers were harvesting peanuts. Peanuts mature reached 90 percent, up 4 points from the previous week, and up 24 points from normal. Peanuts harvested reached 50 percent, up 15 points from the previous week, and up 9 points from normal. Soybeans harvested reach 83 percent, up 5 points from the previous week, and up 3 points from normal.

Fruit, Vegetable, and Specialty Crops: In the Lower Valley and South Texas, producers were planting onion, carrots, leafy greens, and other cool season vegetables. In the Trans-Pecos, pecans were progressing. In the Edwards Plateau and South Central Texas, some pecans were being harvested. In South Texas, producers were harvesting fall vegetables. In the Lower Valley, producers continued to harvest citrus.

Range and Pasture: Pasture conditions remained dry. Most parts of the state will need additional rain to improve dry pasture conditions. In the Cross Timbers, the Lower Valley, and South Texas, producers were finishing up the cutting and baling of hay. Producers continued supplemental feeding of livestock. Pasture and range conditions were rated at 63 percent, poor to very poor.

**Crop Progress by Percent
For Week Ending October 27, 2024**

Stage	Percentage of Acreage			
	Current Week	Previous Week	Previous Year	5 Year Average
Upland Cotton				
Bolls Opening	95	92	88	92
Harvested	48	43	42	43
Peanuts				
Mature	90	86	75	66
Harvested	50	35	46	41
Soybeans				
Harvested	83	78	78	80
Winter Wheat				
Planted	70	65	72	75
Emerged	46	40	52	52
Oats				
Planted	78	70	23	66
Emerged	47	35	-	39

-Represents zero.

**Crop Condition by Percent
For Week Ending October 27, 2024**

Crop	Percent of Acreage					Index ¹	
	Excellent	Good	Fair	Poor	Very Poor	2024	2023
Upland Cotton	2	20	28	28	22	45	33
Peanuts	3	47	46	3	1	74	69
Soybeans	1	33	38	24	4	60	61
Winter Wheat	4	26	35	21	14	55	67
Range and Pasture	1	10	26	36	27	36	35

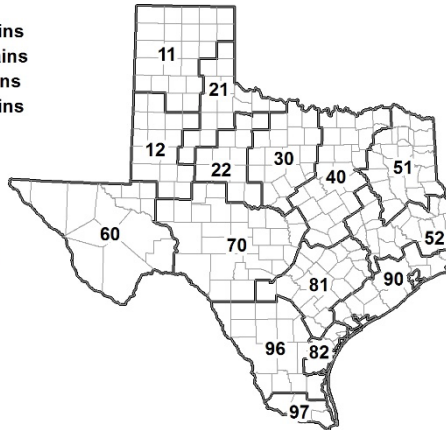
¹ The formula for the condition index is $I = (110E + 90G + 60F + 25P + 5V)/100$ where I = crop condition index and E, G, F, P, V = percentage of crop rated very poor, poor, fair, good, excellent.

**Soil Moisture and Days Suitable by District
For Week Ending October 27, 2024**

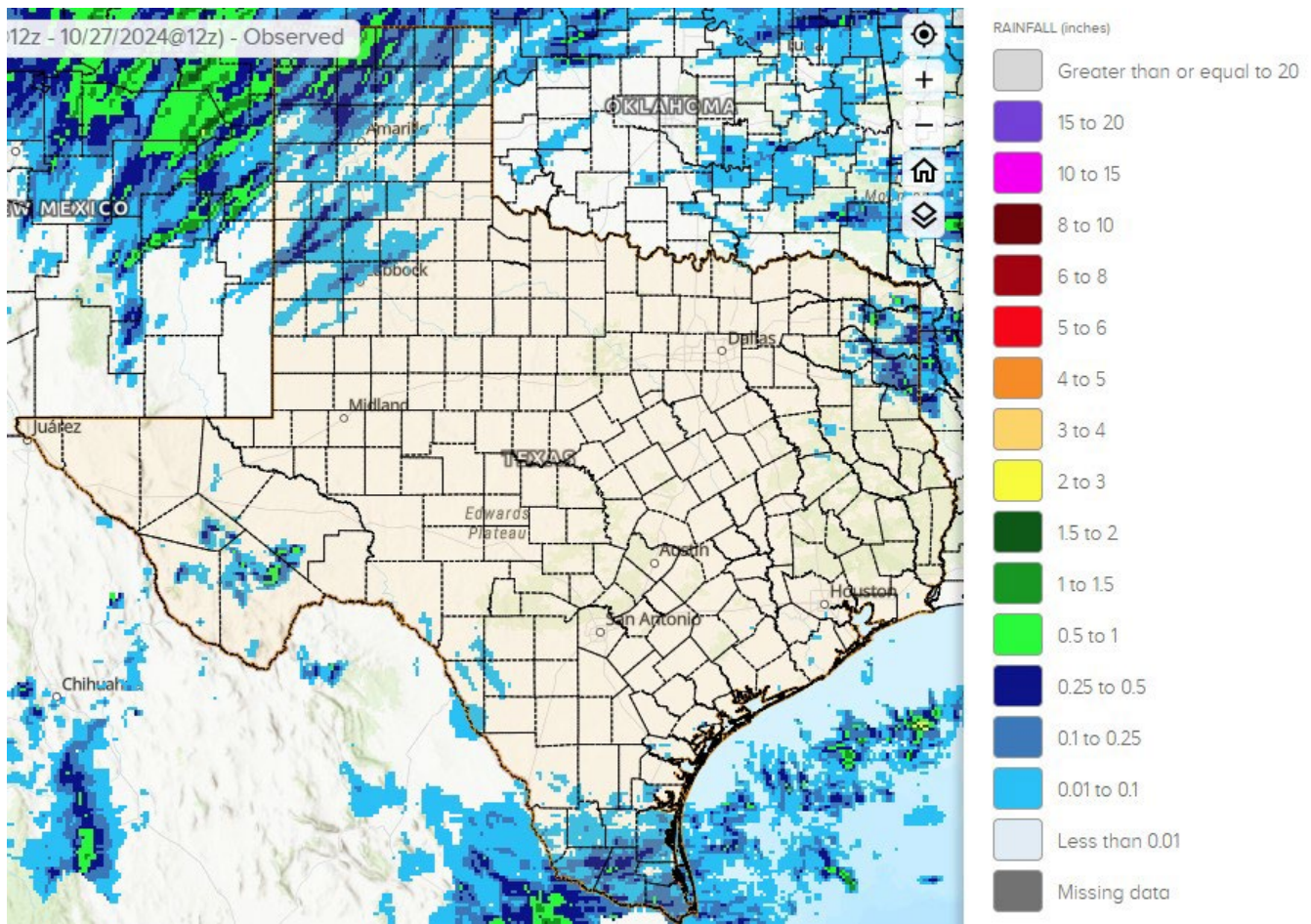
District	Subsoil Moisture Condition by District				Topsoil Moisture Condition by District				Days Suitable for Fieldwork
	Percentage of Acreage				Percentage of Acreage				
	Very Short	Short	Adequate	Surplus	Very Short	Short	Adequate	Surplus	
11	36	56	8	0	36	53	11	0	5.7
12	57	38	5	0	31	66	2	1	4.8
21	79	17	4	0	80	17	3	0	5.6
22	29	49	22	0	44	45	11	0	6.8
30	31	48	21	0	47	38	15	0	5.7
40	58	34	8	0	62	34	4	0	6.6
51	35	57	8	0	39	54	7	0	7.0
52	18	68	10	4	40	48	11	1	7.0
60	20	80	0	0	20	80	0	0	3.3
70	34	54	11	1	55	39	6	0	6.8
81	50	48	2	0	59	41	0	0	7.0
82	90	10	0	0	100	0	0	0	3.8
90	34	50	15	1	58	25	16	1	6.2
96	28	51	20	1	32	47	20	1	6.8
97	3	27	68	2	25	44	31	0	5.4
State	45	44	11	0	47	45	8	0	5.9

Texas Agricultural Districts

- 11 Northern High Plains
- 12 Southern High Plains
- 21 Northern Low Plains
- 22 Southern Low Plains
- 30 Cross Timbers
- 40 Blacklands
- 51 North East
- 52 South East
- 60 Trans-Pecos
- 70 Edwards Plateau
- 81 South Central
- 82 Coastal Bend
- 90 Upper Coast
- 96 South
- 97 Lower Valley

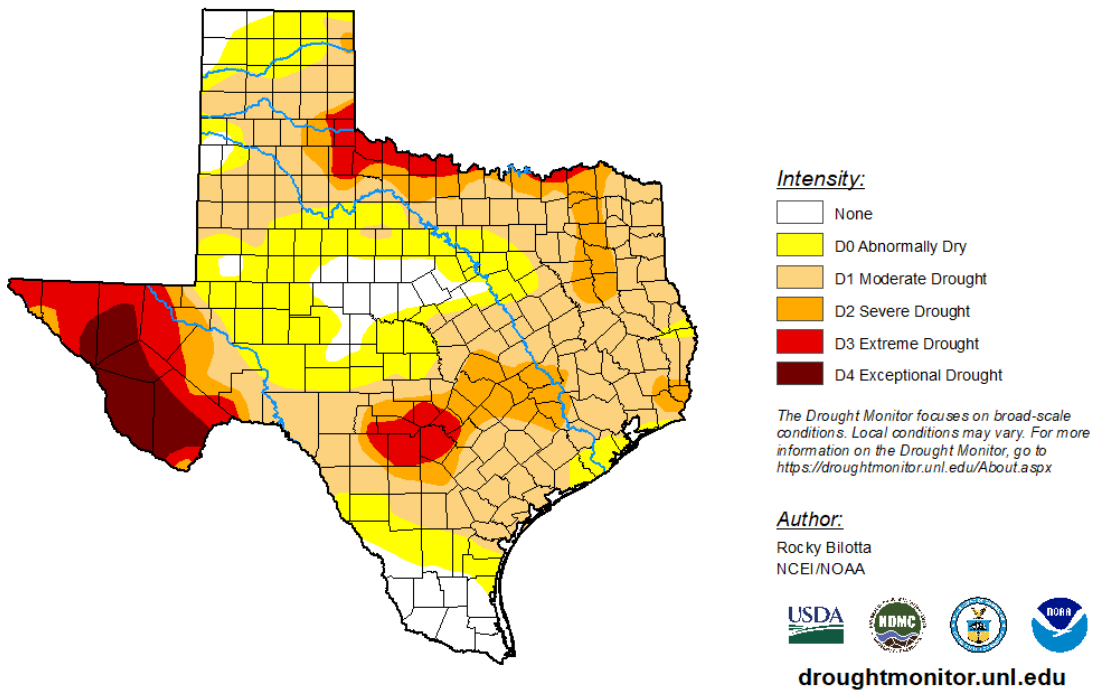


Seven Day Observed Regional Precipitation, October 27, 2024



Source: National Weather Service, www.nws.noaa.gov

Drought Monitor, Map Released: October 24, 2024



Source: National Drought Mitigation Center, a partnership with USDA, U.S. Department of Commerce/NOAA, <http://droughtmonitor.unl.edu>