



## Texas Crop Progress and Condition

Southern Plains Regional Field Office  
Post Office Box 70 Austin, Texas 78767  
(800) 626-3142 · FAX (855) 270-2725 · [www.nass.usda.gov/tx](http://www.nass.usda.gov/tx)

Issue: TX-CW3724

Weekly Summary for September 23 - September 29

Released: September 30, 2024

Parts of the state received some rainfall as seasonal temperatures returned. Rainfall ranged from trace amounts up to 6 inches, with the Southern Low Plains and the Cross Timbers receiving the most rain. Drought conditions ranged from none to exceptional drought with areas in the Trans-Pecos being the driest. There was an average of 5.5 days suitable for fieldwork.

**Small Grains:** Small grains continued to progress in areas that received rain, while other areas still needed additional rainfall. In the Northern High Plains, the Cross Timbers, and the Edwards Plateau, armyworms were observed in some wheat fields. In parts of the Southern Low Plains, winter wheat planting was delayed due to wet field conditions. Winter wheat planted reached 43 percent, up 14 points from the previous week, and up 4 points from normal. Winter wheat emerged reached 15 percent, up 10 points from the previous week, and up 4 points from normal. Oats planted reached 28 percent, up 12 points from the previous week and up 1 point from normal.

**Row Crops:** In the Northern High Plains, corn harvest was delayed due to high moisture content. Corn harvested reached 91 percent, up 6 points from the previous week, and up 15 points from normal. Sorghum harvested reached 90 percent, up 5 points from the previous week and from normal. In the High Plains, producers began applying defoliants. In the Blacklands, recent rains delayed cotton harvest. In South Texas and the Lower Valley, cotton harvest continued to progress. Cotton bolls opening reached 65 percent, up 10 points from the previous week, but down 1 point from normal. Cotton harvested reached 31 percent, up 5 points from the previous week, and up 7 points from normal. In the Southern High Plains, producers were making plan to begin digging in the coming weeks. Peanuts mature reached 49 percent, up 10 points from the previous week, and up 14 points from normal. Peanuts harvested reached 6 percent, up 1 point from normal. Soybeans dropping leaves reached 86 percent, up 10 points from the previous week, but unchanged from normal. Soybeans harvested reach 45 percent, up 14 points from the previous week, but down 9 points from normal. Sunflowers harvested reached 87 percent, up 7 points from the previous week, and up 15 points from normal.

**Fruit, Vegetable, and Specialty Crops:** In the Lower Valley, citrus trees were doing well as the fruit continued to mature, but fruit fly activity was being monitored in some orchards. In the Cross Timbers, some producers began pecan harvest. In South East Texas, pecan scab was observed in some orchards. In the Northern High Plains, producers continued harvesting pumpkins.

**Range and Pasture:** Pastures continued to green up in areas that received rain, while dry conditions and cooler temperatures were limiting growth in other areas. In the Cross Timbers, the Blacklands, the Edwards Plateau, and the Lower Valley, armyworms and grasshoppers continued to damage pastures. Producers were increasing supplemental feeding due to declining pasture conditions in some areas. Pasture and range conditions were rated at 62 percent, fair to poor.

**Crop Progress by Percent**  
For Week Ending September 29, 2024

Stage	Percentage of Acreage			
	Current Week	Previous Week	Previous Year	5 Year Average
<b>Corn</b>				
Harvested	91	85	77	76
<b>Cotton</b>				
Bolls Opening	65	55	65	66
Harvested	31	26	27	24
<b>Peanuts</b>				
Mature	49	39	38	35
Harvested	6	-	5	5
<b>Sorghum</b>				
Harvested	90	85	84	85
<b>Soybeans</b>				
Dropping Leaves	86	76	85	86
Harvested	45	31	45	54
<b>Sunflowers</b>				
Harvested	87	80	74	72
<b>Winter Wheat</b>				
Planted	43	29	41	39
Emerged	15	5	11	11
<b>Oats</b>				
Planted	28	16	23	27

- Represents zero

**Crop Condition by Percent**  
For Week Ending September 29, 2024

Crop	Percent of Acreage					Index <sup>1</sup>	
	Excellent	Good	Fair	Poor	Very Poor	2024	2023
Corn	8	33	28	22	9	61	67
Cotton	2	18	30	25	25	44	33
Peanuts	8	45	40	6	1	75	60
Sorghum	12	35	31	16	6	68	62
Soybeans	1	28	49	18	4	60	61
Range and Pasture	2	18	33	29	18	46	28

<sup>1</sup> The formula for the condition index is  $I = (5V + 25P + 60F + 90G + 110E)/100$  where I = crop condition index and V, P, F, G, E = percentage of crop rated very poor, poor, fair, good, excellent.

**Soil Moisture and Days Suitable by District**  
For Week Ending September 29, 2024

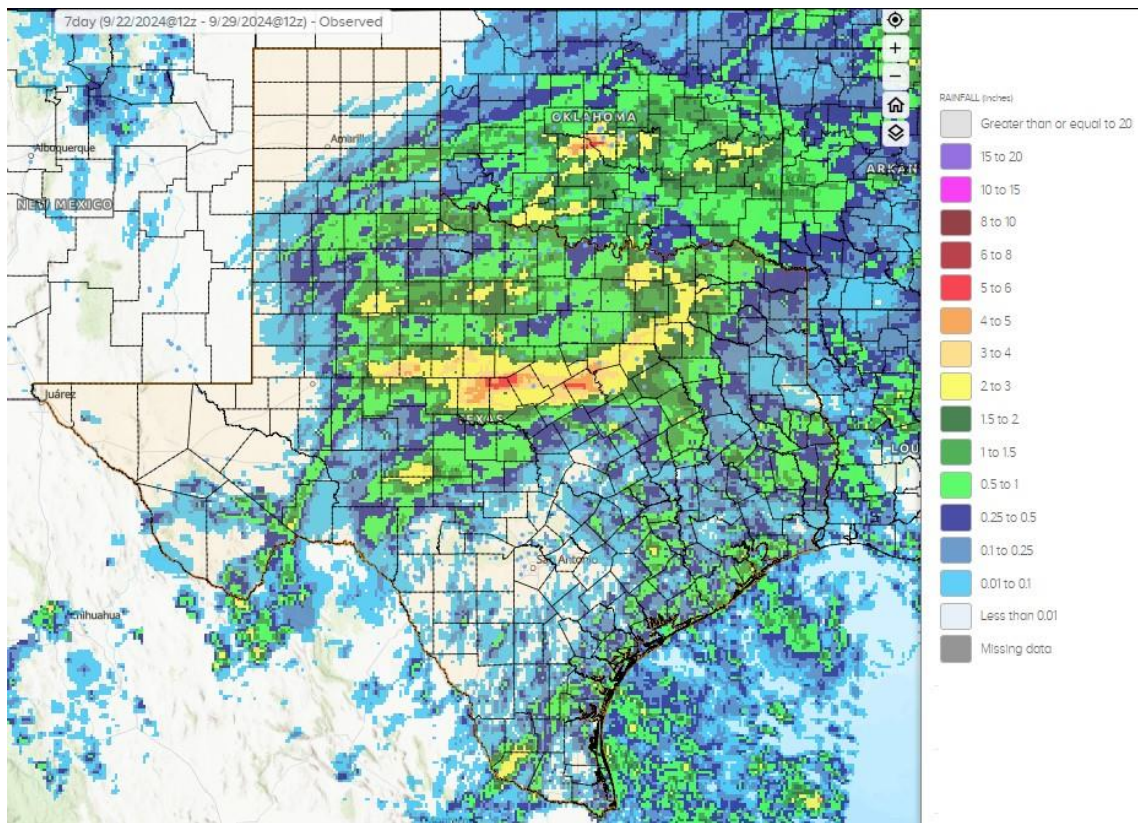
District	Subsoil Moisture Condition by District				Topsoil Moisture Condition by District				Days Suitable for Fieldwork
	Percentage of Acreage				Percentage of Acreage				
	Very Short	Short	Adequate	Surplus	Very Short	Short	Adequate	Surplus	
11	23	60	17	0	12	38	50	0	5.6
12	43	41	6	10	1	28	42	29	4.4
21	35	55	10	0	36	38	26	0	6.0
22	5	49	46	0	2	52	46	0	6.0
30	7	25	64	4	9	23	59	9	5.2
40	35	44	21	0	37	46	17	0	5.5
51	6	48	44	2	6	45	47	2	7.0
52	4	35	57	4	7	48	44	1	6.9
60	7	37	53	3	7	37	53	3	4.0
70	7	40	52	1	6	34	59	1	5.6
81	21	48	31	0	13	59	27	1	6.8
82	0	45	55	0	0	52	45	3	5.2
90	7	19	29	45	9	44	38	9	5.5
96	12	48	39	1	13	46	41	0	6.1
97	1	6	83	10	1	28	63	8	5.4
State	22	45	28	5	12	39	42	7	5.5

**Texas Agricultural Districts**

- 11 Northern High Plains
- 12 Southern High Plains
- 21 Northern Low Plains
- 22 Southern Low Plains
- 30 Cross Timbers
- 40 Blacklands
- 51 North East
- 52 South East
- 60 Trans-Pecos
- 70 Edwards Plateau
- 81 South Central
- 82 Coastal Bend
- 90 Upper Coast
- 96 South
- 97 Lower Valley

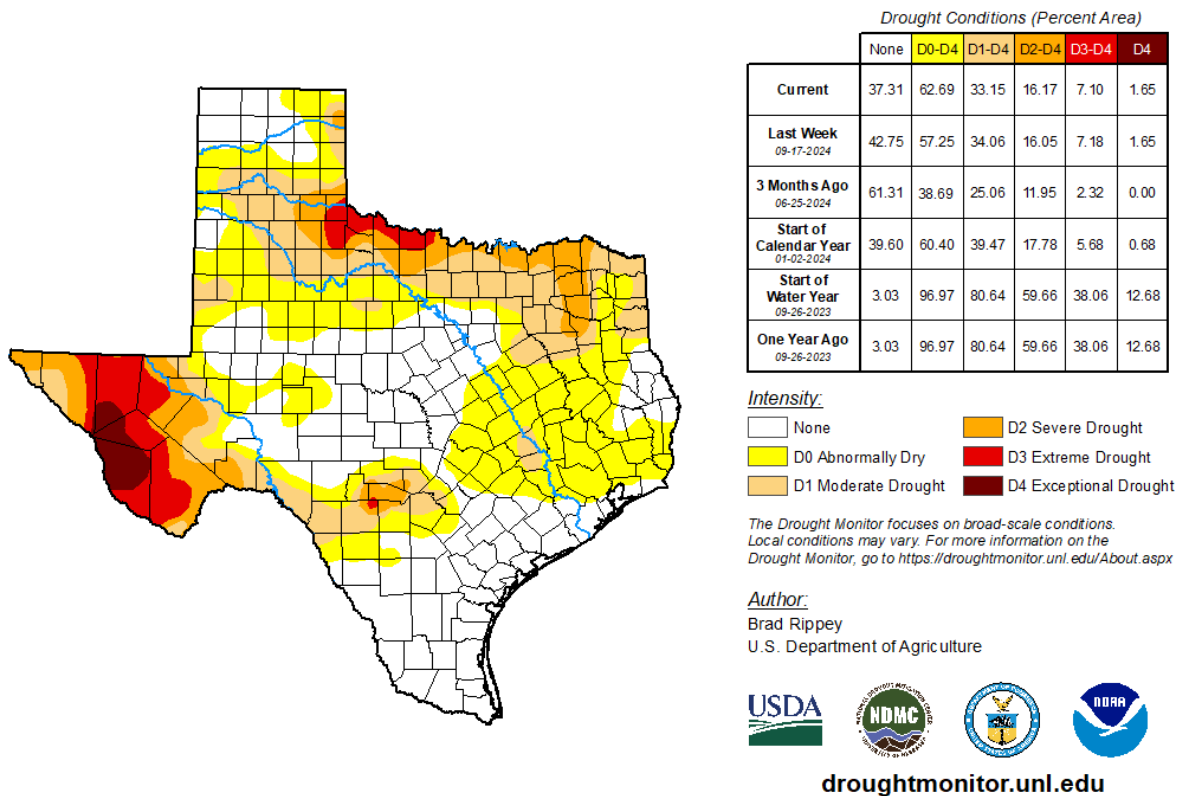


## Seven Day Observed Regional Precipitation, September 29, 2024



Source: National Weather Service, [www.nws.noaa.gov](http://www.nws.noaa.gov)

## Drought Monitor, Map Released: September 26, 2024



Source: National Drought Mitigation Center, a partnership with USDA, U.S. Department of Commerce/NOAA, <http://droughtmonitor.unl.edu>