



Texas Crop Progress and Condition

Southern Plains Regional Field Office
Post Office Box 70 Austin, Texas 78767
(800) 626-3142 · FAX (855) 270-2725 · www.nass.usda.gov/tx

Issue: TX-CW2924

Weekly Summary for July 29 - August 4

Released: August 5, 2024

Crops continued to progress across the state despite mostly hot and dry conditions. Rainfall ranged from trace amounts up to 3 inches, with the Upper Coast and South Central Texas receiving the most rain. Drought conditions ranged from none to exceptional drought with areas in the Trans-Pecos and Edwards Plateau being the driest. There was an average of 6.0 days suitable for fieldwork.

Row Crops: In the Blacklands and in the Northern High Plains, corn and sorghum were maturing. In the Blacklands, Edwards Plateau, and South Central Texas, producers were harvesting corn and sorghum. Corn dough reached 82 percent, up 4 points from the previous week, and up 6 points from normal. Corn dented reached 65 percent, up 5 points from the previous week, and up 2 points from normal. Corn mature reached 47 percent, up 5 points from the previous week, and up 5 points from normal. Corn harvested reached 35 percent, up 8 points from the previous week. Sorghum coloring reached 69 percent, up 3 points from the previous week, but unchanged from normal. Sorghum mature reached 55 percent, up 3 points from the previous week, but unchanged from normal. Sorghum harvested reached 45 percent, up 3 points from the previous week, and up 13 points from normal. Cotton stress and boll shed were sighted in the Northern High Plains, the Southern Low Plains and South Texas. Cotton was setting bolls in the Northern High Plains and the Upper Coast. Cotton squaring reached 87 percent, up 5 points from the previous week, but down 1 point from normal. Cotton setting bolls reached 51 percent, up 2 points from the previous week, but unchanged from normal. Cotton opening bolls reached 11 percent, up 2 points from normal. In South Central Texas, producers continued to harvest rice. In the Upper Coast, rice harvesting was halted due to flooded fields. Rice harvested reached 16 percent, up 10 points from the previous week, but unchanged from normal. Peanuts pegging reached 68 percent, up 16 points from the previous week, and up 3 points from normal. Soybeans blooming reached 83 percent, up 5 points from the previous week, but unchanged from normal. Soybeans setting pods reached 60 percent, up 10 points from the previous week, but down 2 points from normal. Soybeans dropping leaves reached 10 percent, unchanged from normal. Sunflowers harvested reached 40 percent, up 8 points from the previous week, and up 6 points from normal.

Fruit, Vegetable, and Specialty Crops: In the Lower Valley, producers were preparing to plant cool season vegetables. In the Northern High Plains, black-eyed peas were beginning to pod. In the Blacklands, figs, okra, peppers, and hydroponic lettuce and greens were progressing. Producers in the Trans-Pecos were harvesting cantaloupes and watermelon. In the Blacklands, producers were harvesting the peach and plum crop.

Range and Pasture: Range and pasture conditions varied across the state. Range conditions were drying out in the Cross Timbers, the Blacklands, and the Southern Low Plains, while range conditions were improving in the Edwards Plateau and the Coastal Bend. In South Texas, South Central Texas, and the northeastern part of the state, producers were cutting and baling hay. Pasture and range conditions were rated at 55 percent, fair to good.

**Crop Progress by Percent
For Week Ending August 4, 2024**

Stage	Percentage of Acreage			
	Current Week	Previous Week	Previous Year	5 Year Average
Corn				
Silked	95	88	91	94
Dough	82	78	77	76
Dented	65	60	68	63
Mature	47	42	48	42
Harvested	35	27	16	7
Upland Cotton				
Squaring	87	82	87	88
Setting Bolls	51	49	48	51
Bolls Opening	11	(NA)	9	9
Peanuts				
Pegging	68	52	64	65
Rice				
Harvested	16	6	19	16
Sorghum				
Headed	86	83	87	86
Coloring	69	66	69	69
Mature	55	52	49	55
Harvested	45	42	25	32
Soybeans				
Blooming	83	78	84	83
Setting Pods	60	50	58	62
Dropping Leaves	10	(NA)	11	10
Sunflowers				
Harvested	40	32	39	34

(NA) Not available.

**Crop Condition by Percent
For Week Ending August 4, 2024**

Crop	Percent of Acreage					Index ¹	
	Excellent	Good	Fair	Poor	Very Poor	2024	2023
Corn	5	30	37	16	12	59	77
Upland Cotton	6	26	28	21	19	53	42
Peanuts	10	48	38	3	1	78	71
Rice	9	55	30	3	3	78	83
Sorghum	9	32	34	15	10	63	71
Soybeans	5	29	50	15	1	65	71
Range and Pasture	9	22	33	22	14	56	35

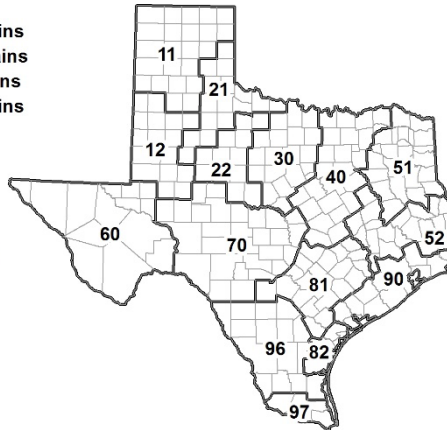
¹ The formula for the condition index is $(110E + 90G + 60F + 25P + 5V)/100$ where I = crop condition index and E, G, F, P, V = percentage of crop rated very poor, poor, fair, good, excellent.

**Soil Moisture and Days Suitable by District
For Week Ending August 4, 2024**

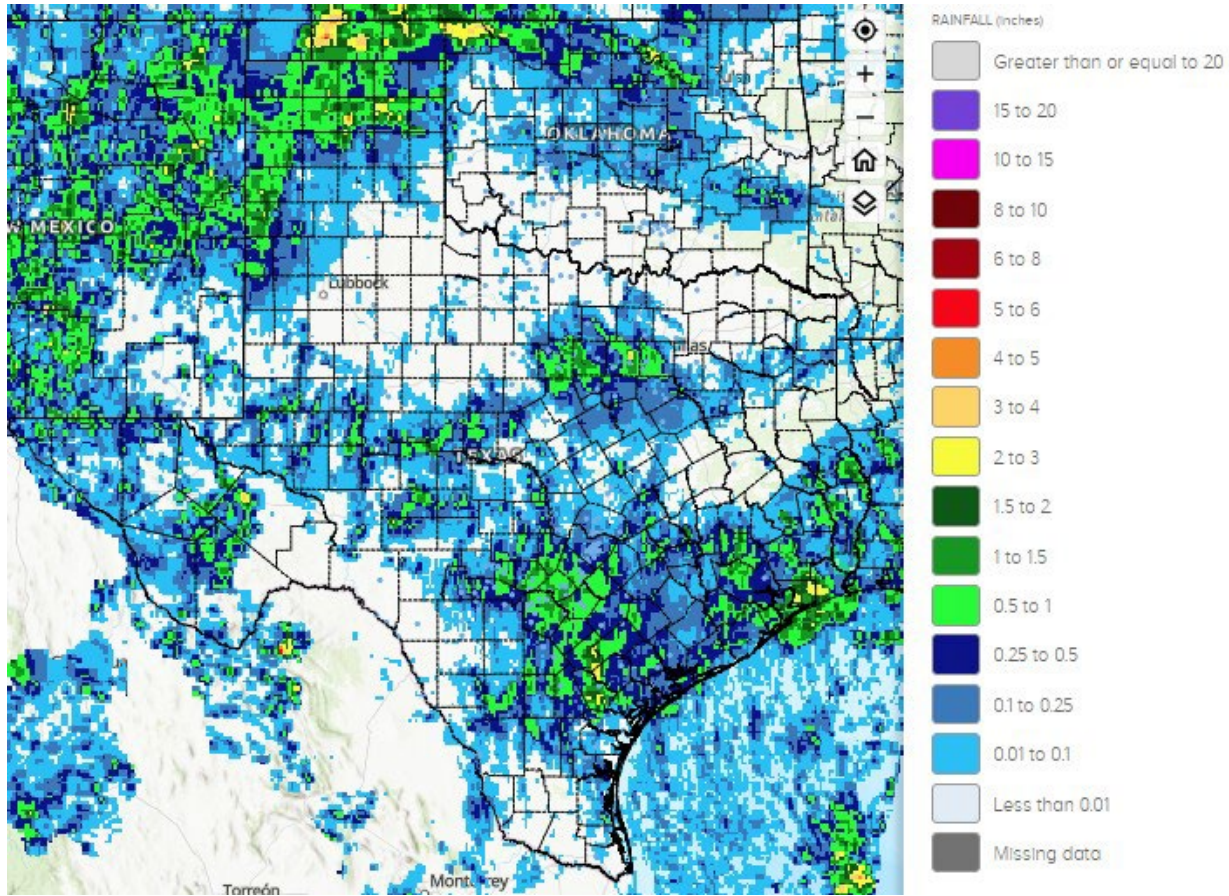
District	Subsoil Moisture Condition by District				Topsoil Moisture Condition by District				Days Suitable for Fieldwork
	Percentage of Acreage				Percentage of Acreage				
	Very Short	Short	Adequate	Surplus	Very Short	Short	Adequate	Surplus	
11	30	50	20	0	35	56	9	0	6.2
12	55	21	16	8	15	60	17	8	5.2
21	28	54	18	0	36	52	12	0	7.0
22	26	59	15	0	40	52	8	0	6.6
30	21	46	33	0	44	39	17	0	5.6
40	19	32	47	2	25	34	39	2	6.8
51	1	17	78	4	0	20	74	6	7.0
52	2	12	52	34	2	8	38	52	6.0
60	25	70	5	0	40	60	0	0	4.9
70	15	40	43	2	48	16	33	3	5.6
81	0	27	69	4	0	18	79	3	6.2
82	0	40	60	0	0	75	25	0	3.8
90	0	8	19	73	0	7	20	73	3.4
96	7	32	59	2	8	38	52	2	6.3
97	4	11	82	3	4	27	67	2	7.0
State	25	35	33	7	23	44	26	7	6.0

Texas Agricultural Districts

- 11 Northern High Plains
- 12 Southern High Plains
- 21 Northern Low Plains
- 22 Southern Low Plains
- 30 Cross Timbers
- 40 Blacklands
- 51 North East
- 52 South East
- 60 Trans-Pecos
- 70 Edwards Plateau
- 81 South Central
- 82 Coastal Bend
- 90 Upper Coast
- 96 South
- 97 Lower Valley

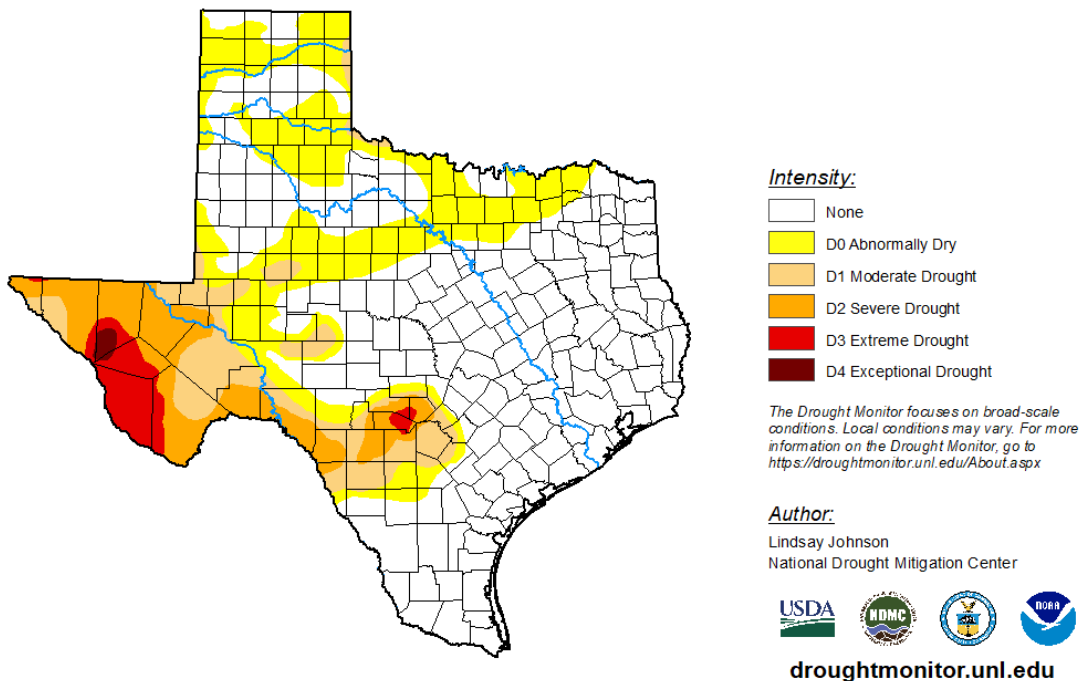


Seven Day Observed Regional Precipitation, August 4, 2024



Source: National Weather Service, www.nws.noaa.gov.

Drought Monitor, Map Released: August 1, 2024



Source: National Drought Mitigation Center, a partnership with USDA, U.S. Department of Commerce/NOAA, <http://droughtmonitor.unl.edu>