



## Texas Crop Progress and Condition

Southern Plains Regional Field Office  
Post Office Box 70 Austin, Texas 78767  
(800) 626-3142 · FAX (855) 270-2725 · [www.nass.usda.gov/tx](http://www.nass.usda.gov/tx)

**Issue: TX-CW2524**

**Weekly Summary for July 1 - July 7**

**Released: July 8, 2024**

Hot and dry conditions continued to cause fields to dry out, and showing signs of heat stress in parts of the state. Rainfall ranged from trace amounts up to 6 inches, with the Northern High Plains receiving the most rain. Drought conditions ranged from none to extreme drought with areas in the Trans-Pecos and Edwards Plateau being the driest. There was an average of 5.8 days suitable for fieldwork. With hurricane Beryl making landfall in the early morning hours of Monday, July 8, we expect to see reports of its impact in next week's publication.

**Small Grains:** Small grain harvest was wrapping up in the Northern High Plains. Winter wheat harvested reached 92 percent, up 5 points from the previous week, but down 1 point from normal. Oats harvested reached 95 percent, up 4 points from the previous week, but unchanged from normal.

**Row Crops:** Row crops continued to progress across the state. In the Cross Timbers, the Blacklands, North East Texas, and the Edwards-Plateau, corn and sorghum were showing signs of stress due to a lack of rainfall. In the South Central district, corn harvest was expected to begin in the coming weeks. Corn dough reached 60 percent, up 13 points from the previous week, and up 8 points from normal. Corn dented reached 34 percent, up 20 points from normal. Sorghum coloring reached 50 percent, up 4 points from the previous week, and up 3 points from normal. Sorghum mature reached 43 percent, up 4 points from the previous week, and up 38 points from normal. Sorghum harvested reached 33 percent, up 6 points from the previous week. In the Southern High Plains and Southern Low Plains, cotton fields were showing signs of drought stress. In the Blacklands, insect damage was sighted in some cotton fields. Cotton squaring reached 42 percent, up 5 points from the previous week, and up 1 point from normal. Cotton setting bolls reached 19 percent, up 6 points from the previous week, and up 4 points from normal. Rice headed reached 78 percent, up 13 points from the previous week, and up 18 points from normal. Peanuts pegging reached 16 percent, up 4 points from the previous week, and up 6 points from normal. Soybeans blooming reached 46 percent, up 4 points from the previous week, but down 11 points from normal. In South Texas, sunflowers were being harvested. Sunflowers harvested reached 9 percent, up 3 points from the previous week, but unchanged from normal.

**Fruit, Vegetable, and Specialty Crops:** In the Southern High Plains, watermelons and cantaloupes were being harvested. In the Trans-Pecos, producers were harvesting watermelons, cantaloupes, and onions.

**Livestock, Range and Pasture:** In the Southern Low Plains and the Cross Timbers districts, grasshoppers continued to damage pasture forages. In other parts of the state, producers continued to notice stress in pastures due to a lack of rainfall. Pasture and range conditions were rated at 59%, fair to good.

**Crop Progress by Percent**  
For Week Ending 07/07/2024

Stage	Percentage of Acreage			
	Current Week	Previous Week	Previous Year	5 Year Average
<b>Corn</b>				
Silked	75	70	74	73
Dough	60	47	54	52
Dented	34	(NA)	11	14
Mature	23	(NA)	-	-
Harvested	12	(NA)	-	-
<b>Cotton</b>				
Squaring	42	37	43	41
Setting Bolls	19	13	17	15
<b>Peanuts</b>				
Pegging	16	12	12	10
<b>Rice</b>				
Headed	78	65	58	60
<b>Sorghum</b>				
Headed	71	65	68	68
Coloring	50	46	47	47
Mature	43	39	-	5
Harvested	33	27	-	-
<b>Soybeans</b>				
Emerged	92	85	92	95
Blooming	46	42	45	57
<b>Sunflowers</b>				
Planted	92	84	92	90
Harvested	9	6	10	9
<b>Winter Wheat</b>				
Harvested	92	87	91	93
<b>Oats</b>				
Harvested	95	91	94	95

(NA) Not available

- Represents zero

**Crop Condition by Percent**  
For Week Ending 07/07/2024

Crop	Percent of Acreage					Index <sup>1</sup>	
	Excellent	Good	Fair	Poor	Very Poor	2024	2023
Corn	18	36	28	15	3	73	78
Cotton	8	27	33	17	15	58	54
Peanuts	8	46	37	6	3	74	71
Rice	10	71	16	2	1	85	83
Sorghum	16	41	29	10	4	75	76
Soybeans	10	25	46	15	4	65	76
Wheat	5	23	55	11	6	62	60
Oats	3	27	35	13	22	53	56
Range and Pasture	7	27	32	21	13	57	50

<sup>1</sup> The formula for the condition index is  $I = (5V + 25P + 60F + 90G + 110E)/100$  where I = crop condition index and V, P, F, G, E = percentage of crop rated very poor, poor, fair, good, excellent.

**Soil Moisture and Days Suitable by District**  
For Week Ending 07/07/2024

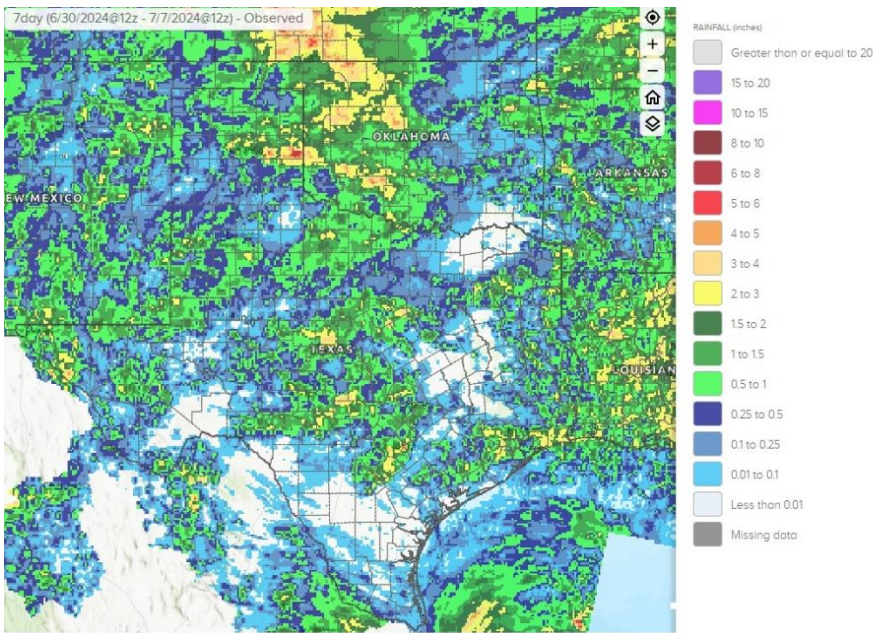
District	Subsoil Moisture Condition by District				Topsoil Moisture Condition by District				Days Suitable for Fieldwork
	Percentage of Acreage				Percentage of Acreage				
	Very Short	Short	Adequate	Surplus	Very Short	Short	Adequate	Surplus	
11	18	37	45	0	20	30	50	0	5.3
12	19	33	45	3	18	31	42	9	5.7
21	2	68	30	0	22	42	35	1	5.8
22	17	36	47	0	21	28	42	9	6.1
30	3	35	62	0	8	59	32	1	5.6
40	15	32	51	2	18	40	42	0	6.8
51	2	28	62	8	4	26	61	9	6.7
52	2	30	53	15	0	19	69	12	6.4
60	40	20	40	0	30	50	20	0	3.1
70	38	38	23	1	30	16	53	1	5.6
81	5	42	49	4	0	50	44	6	6.1
82	0	5	76	19	0	13	75	12	5.9
90	0	20	80	0	0	30	70	0	4.1
96	7	38	52	3	7	48	43	2	6.7
97	6	32	59	3	5	50	35	10	5.4
State	13	35	50	2	15	35	46	4	5.8

**Texas Agricultural Districts**

- 11 Northern High Plains
- 12 Southern High Plains
- 21 Northern Low Plains
- 22 Southern Low Plains
- 30 Cross Timbers
- 40 Blacklands
- 51 North East
- 52 South East
- 60 Trans-Pecos
- 70 Edwards Plateau
- 81 South Central
- 82 Coastal Bend
- 90 Upper Coast
- 96 South
- 97 Lower Valley

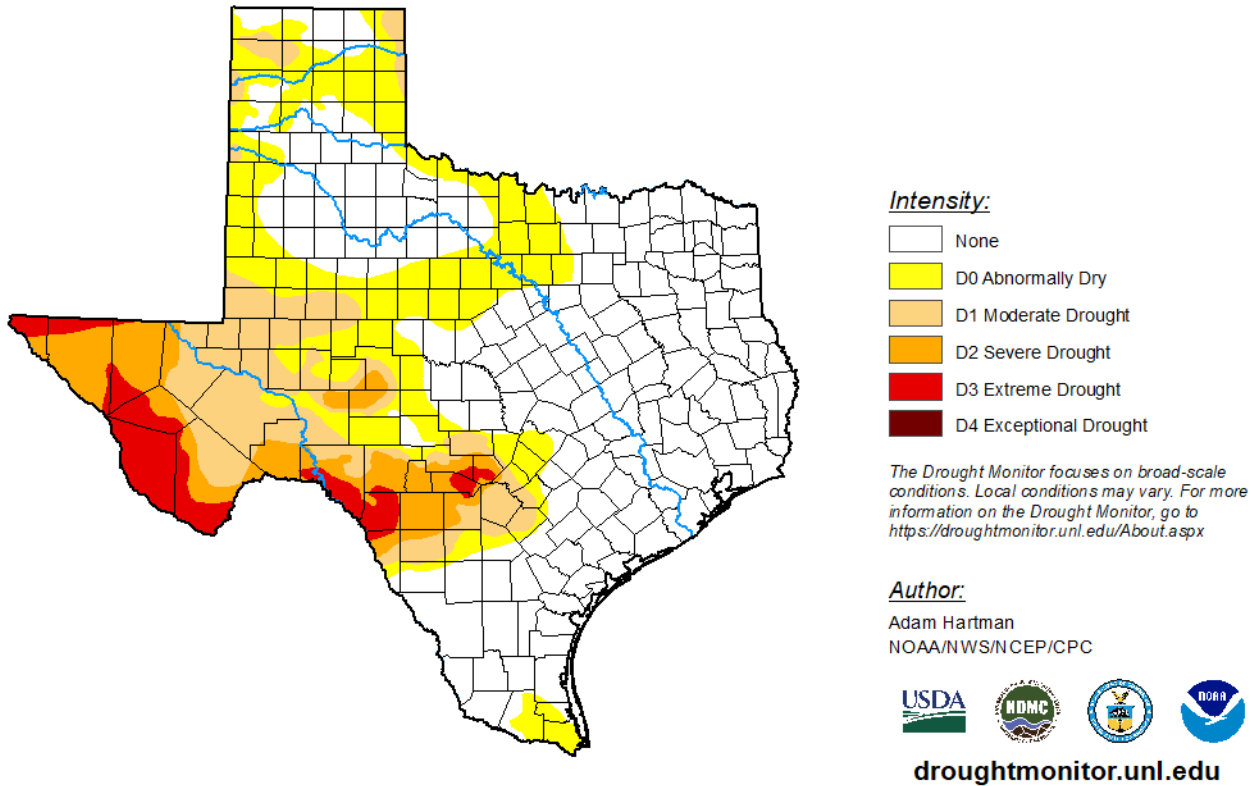


# Seven Day Observed Regional Precipitation, July 7, 2024



Source: National Weather Service, [www.nws.noaa.gov](http://www.nws.noaa.gov)

# Drought Monitor, Map Released: July 3, 2024



Source: National Drought Mitigation Center, a partnership with USDA, U.S. Department of Commerce/NOAA, <http://droughtmonitor.unl.edu>