



Texas Crop Progress and Condition

Southern Plains Regional Field Office
Post Office Box 70 Austin, Texas 78767
(800) 626-3142 · FAX (855) 270-2725 · www.nass.usda.gov/tx

Issue: TX-CW2124

Weekly Summary for June 3 - June 9

Released: June 10, 2024

Scattered thunderstorms continued in the North East part of the state. Rainfall ranged from trace amounts up to 8 inches, with the Blacklands and the Upper Coast receiving the most rain. Drought conditions ranged from none to extreme drought with areas in the Trans-Pecos and Edwards Plateau being the driest. There was an average of 5.9 days suitable for fieldwork.

Small Grains: Producers across the state were harvesting winter wheat and oats, while others noticed damage from recent weather events. Winter wheat harvested reached 47 percent, up 14 points from the previous week, and 8 points from normal. Oats harvested reached 50 percent, up 10 points from the previous week, but down 10 points from normal.

Row Crops: Row crop producers were busy planting across the state. In the Blacklands and the Edwards Plateau, corn producers observed some damage due to recent hail, high winds, and tornados. In the Lower Valley, producers were harvesting corn and sorghum. Corn emerged reached 91 percent, up 3 points from the previous week, but down 1 point from normal. Corn silked reached 61 percent, up 11 points from the previous week, and up 9 points from normal. Corn dough reached 10 percent, up 3 points from the previous year, and up 7 points from normal. Sorghum planted reached 87 percent, up 3 points from the previous week, but down 3 points from normal. Sorghum headed reached 46 percent, up 2 points from the previous week, and up 3 points from normal. In the Upper Coast, cotton was beginning to square and set bolls. In the Lower Valley, cotton was beginning to square. Cotton planted reached 74 percent, up 12 points from the previous week, and unchanged from normal. Cotton squaring reached 17 percent, up 4 points from the previous week, and up 3 points from normal. In South Central Texas, rice was heading out. Rice headed reached 15 percent, up 2 points from the previous week, and up 9 points from normal. Peanuts planted reached 79 percent, up 3 points from the previous week, but down 6 points from normal. Soybeans planted reached 71 percent, up 7 points from the previous week, but down 10 points from normal. Soybeans emerged reached 55 percent, up 9 points from the previous week, but down 11 points from normal. Soybeans blooming reached 12 percent, up 5 points from the previous year, and up 2 points from normal. Sunflowers planted reached 53 percent, up 6 points from the previous week, but down 11 points from normal.

Fruit, Vegetable, and Specialty Crops: In the Northern High Plains, producers were preparing to plant black-eyed peas. In the Southern High Plains, melons continued to progress. In the Cross Timbers, pecan trees were slowly progressing, while pecan trees in the Trans-Pecos were pollinating. In South Texas, producers were harvesting potatoes.

Livestock, Range and Pasture: Pasture conditions varied across the state. In some parts of the state, pastures were thriving. In other parts of the state, saturated fields persisted, halting hay production. Additional moisture was still needed in other parts of the state. Flies and insect pest continued to be a concern in some pastures. Livestock conditions were rated at 51%, fair to good.

**Crop Progress by Percent
For Week Ending June 9, 2024**

Stage	Percentage of Acreage			
	Current Week	Previous Week	Previous Year	5 Year Average
Corn				
Emerged	91	88	91	92
Silked	61	50	56	52
Dough	10	(NA)	7	3
Upland Cotton				
Planted	74	62	69	74
Squaring	17	13	11	14
Peanuts				
Planted	79	76	73	73
Rice				
Headed	15	13	4	6
Sorghum				
Planted	87	84	90	90
Headed	46	44	41	43
Coloring	15	(NA)	-	11
Soybeans				
Planted	71	64	78	81
Emerged	55	46	59	66
Blooming	12	(NA)	7	10
Sunflowers				
Planted	53	47	69	64
Winter Wheat				
Harvested	47	33	38	39
Oats				
Harvested	50	40	55	60

(NA) Not available.

-Represents zero.

**Crop Condition by Percent
For Week Ending June 9, 2024**

Crop	Percent of Acreage					Index ¹	
	Excellent	Good	Fair	Poor	Very Poor	2024	2023
Corn	12	45	27	13	3	73	87
Upland Cotton	6	38	45	8	3	70	62
Peanuts	1	48	47	3	1	73	67
Rice	17	51	32	0	0	84	80
Sorghum	11	44	32	9	4	73	78
Soybeans	1	29	65	4	1	67	74
Winter Wheat	4	26	52	12	6	63	59
Oats	3	27	35	13	22	53	56
Range and Pasture	8	25	26	21	20	53	63

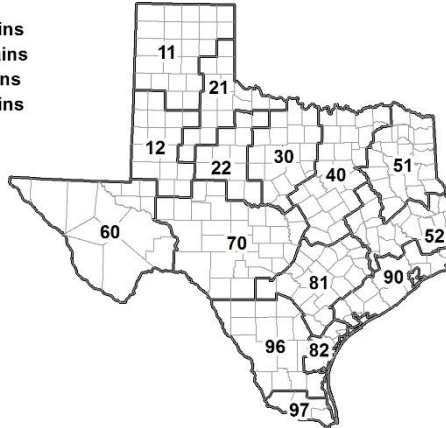
¹ The formula for the condition index is $I = (110E + 90G + 60F + 25P + 5V)/100$ where I = crop condition index and E, G, F, P, V = percentage of crop rated very poor, poor, fair, good, excellent.

**Soil Moisture and Days Suitable by District
For Week Ending June 9, 2024**

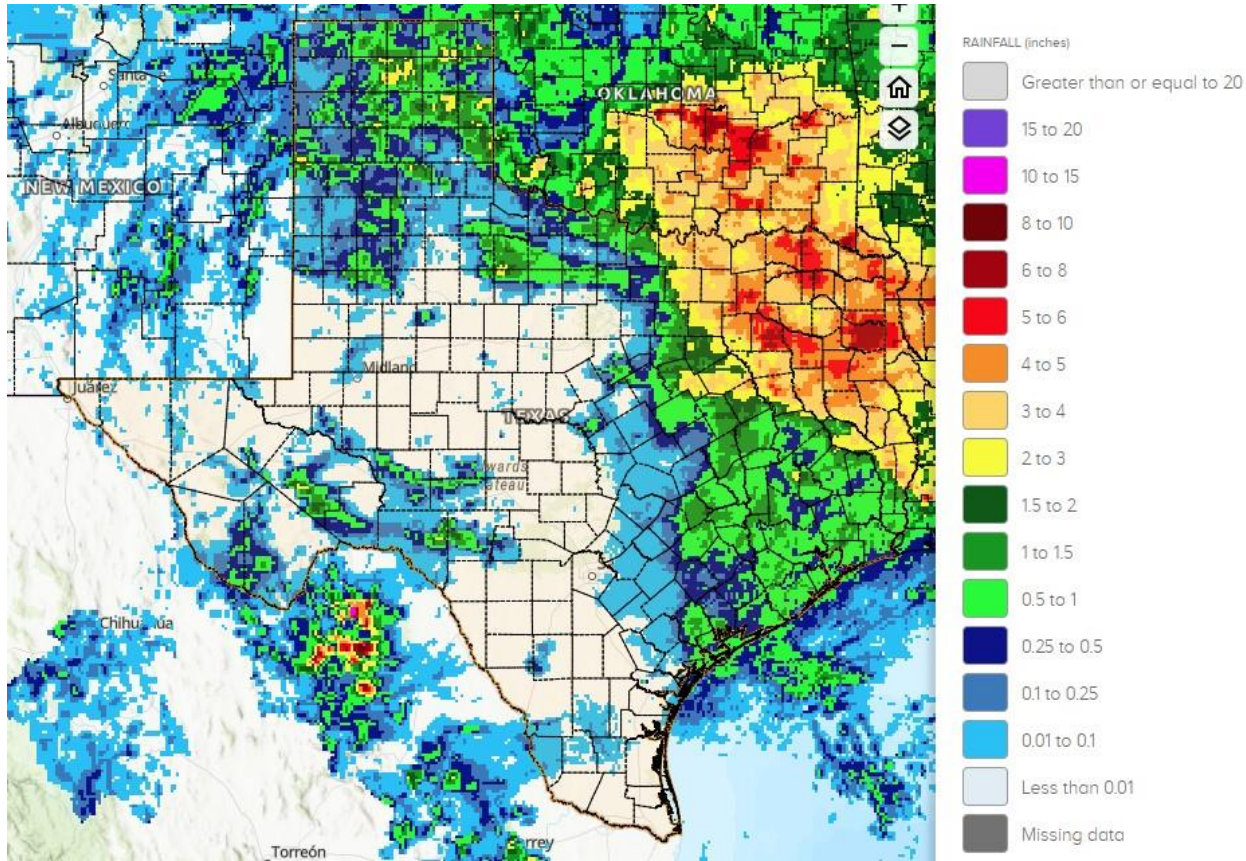
District	Subsoil Moisture Condition by District				Topsoil Moisture Condition by District				Days Suitable for Fieldwork
	Percentage of Acreage				Percentage of Acreage				
	Very Short	Short	Adequate	Surplus	Very Short	Short	Adequate	Surplus	
11	9	41	47	3	13	46	39	2	6.1
12	47	28	22	3	3	49	45	3	6.7
21	3	46	51	0	2	40	52	6	6.2
22	5	20	74	1	7	22	69	2	6.0
30	0	5	82	13	0	6	82	12	6.0
40	0	0	39	61	0	1	40	59	3.8
51	0	0	33	67	0	1	41	58	4.4
52	1	7	46	46	1	3	50	46	4.7
60	50	50	0	0	50	50	0	0	5.5
70	30	10	59	1	30	10	59	1	6.9
81	7	47	42	4	19	30	47	4	6.3
82	17	37	46	0	29	27	44	0	7.0
90	2	20	52	26	0	33	40	27	4.9
96	22	43	34	1	30	39	30	1	6.6
97	35	60	5	0	68	27	5	0	7.0
State	15	26	44	15	10	30	46	14	5.9

Texas Agricultural Districts

- 11 Northern High Plains
- 12 Southern High Plains
- 21 Northern Low Plains
- 22 Southern Low Plains
- 30 Cross Timbers
- 40 Blacklands
- 51 North East
- 52 South East
- 60 Trans-Pecos
- 70 Edwards Plateau
- 81 South Central
- 82 Coastal Bend
- 90 Upper Coast
- 96 South
- 97 Lower Valley



Seven Day Observed Regional Precipitation, June 9, 2024

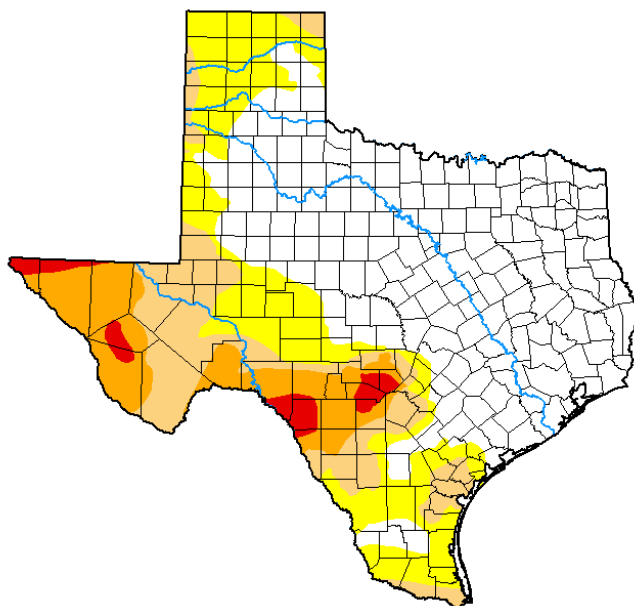


Source: National Weather Service, www.nws.noaa.gov

Drought Monitor, Map Released: June 6, 2024

U.S. Drought Monitor Texas

June 4, 2024
(Released Thursday, Jun. 6, 2024)
Valid 8 a.m. EDT



Intensity:

- None
- D0 Abnormally Dry
- D1 Moderate Drought
- D2 Severe Drought
- D3 Extreme Drought
- D4 Exceptional Drought

The Drought Monitor focuses on broad-scale conditions. Local conditions may vary. For more information on the Drought Monitor, go to <https://droughtmonitor.unl.edu/About.aspx>

Author:

Brad Pugh
CPC/NOAA



droughtmonitor.unl.edu

Source: National Drought Mitigation Center, a partnership with USDA, U.S. Department of Commerce/NOAA, <http://droughtmonitor.unl.edu>