



Texas Crop Progress and Condition

Southern Plains Regional Field Office
Post Office Box 70 Austin, Texas 78767
(800) 626-3142 · FAX (855) 270-2725 · www.nass.usda.gov/tx

Issue: TX-CW1124

Weekly Summary for March 25 - March 31

Released: April 1, 2024

Crop conditions continued to improve despite windy conditions across the state with isolated rainfall reported. Rainfall ranged from trace amounts to 3.0 inches, with North East Texas receiving the most rain. Drought conditions ranged from none to extreme drought with areas in the Trans-Pecos and the Edwards Plateau being the driest. There was an average of 5.6 days suitable for fieldwork.

Small Grains: Winter wheat and oats remained in good condition in the Northern High Plains, the Southern Low Plains, the Blacklands, and the Edwards Plateau. Some producers in the Northern High Plains and the Southern High Plains were turning on supplemental irrigation due to lack of rainfall received. In the Southern Low Plains, the Blacklands, and South East Texas, winter wheat proceeded to head out. Winter wheat headed reached 20 percent, down 8 points from the previous year. Oats headed reached 26 percent, down 10 points from the previous year.

Row Crops: Corn and sorghum producers continued to plant, as corn was emerging in the Blacklands and South East Texas. Sorghum was emerging in the Upper Coast. Cotton producers began pre-planting activities in the Northern High Plains, the Northern Low Plains, and South Central districts. Most areas in the Upper Coast were planting rice. Corn planted reached 57 percent, up 1 point from the previous year. Sorghum planted reached 42 percent, down 2 points from the previous year. Rice planted reached 32 percent, up 1 point from the previous year. Rice emerged reached 14 percent, up 1 point from the previous year. Cotton planted reached 5 percent, unchanged from the previous year.

Fruit, Vegetable, and Specialty Crops: Recent rainfall helped spring vegetables in South Texas. Pecan trees moved out of winter dormancy in the Cross Timbers and leaves were on pecan trees in the Trans-Pecos district. Onion and citrus producers were harvesting in the Lower Valley.

Livestock, Range and Pasture: The improved soil moisture from recent rains supported the greening of pastures in most areas, while some parts of the state were in need of additional rainfall. Pasture and range conditions were rated fair to poor. Livestock producers continued supplemental feeding.

**Crop Progress by Percent
For Week Ending March 31, 2024**

Stage	Percentage of Acreage			
	Current Week	Previous Week	Previous Year	5 Year Average
Corn				
Planted	57	46	56	53
Cotton				
Planted	5	(NA)	5	6
Rice				
Planted	32	20	31	38
Emerged	14	(NA)	13	12
Sorghum				
Planted	42	37	44	44
Winter Wheat				
Headed	20	17	28	22
Oats				
Headed	26	18	36	25

(NA) Not available.

**Crop Condition by Percent
For Week Ending March 31, 2024**

Crop	Percent of Acreage					Index ¹	
	Excellent	Good	Fair	Poor	Very Poor	2024	2023
Wheat	8	36	38	11	7	67	45
Oats	4	24	47	14	11	58	45
Range and Pasture	3	18	34	23	22	47	33

¹ The formula for the condition index is $I = (5V + 25P + 60F + 90G + 110E)/100$ where I = crop condition index and V, P, F, G, E = percentage of crop rated very poor, poor, fair, good, excellent.

**Soil Moisture and Days Suitable by District
For Week Ending March 31, 2024**

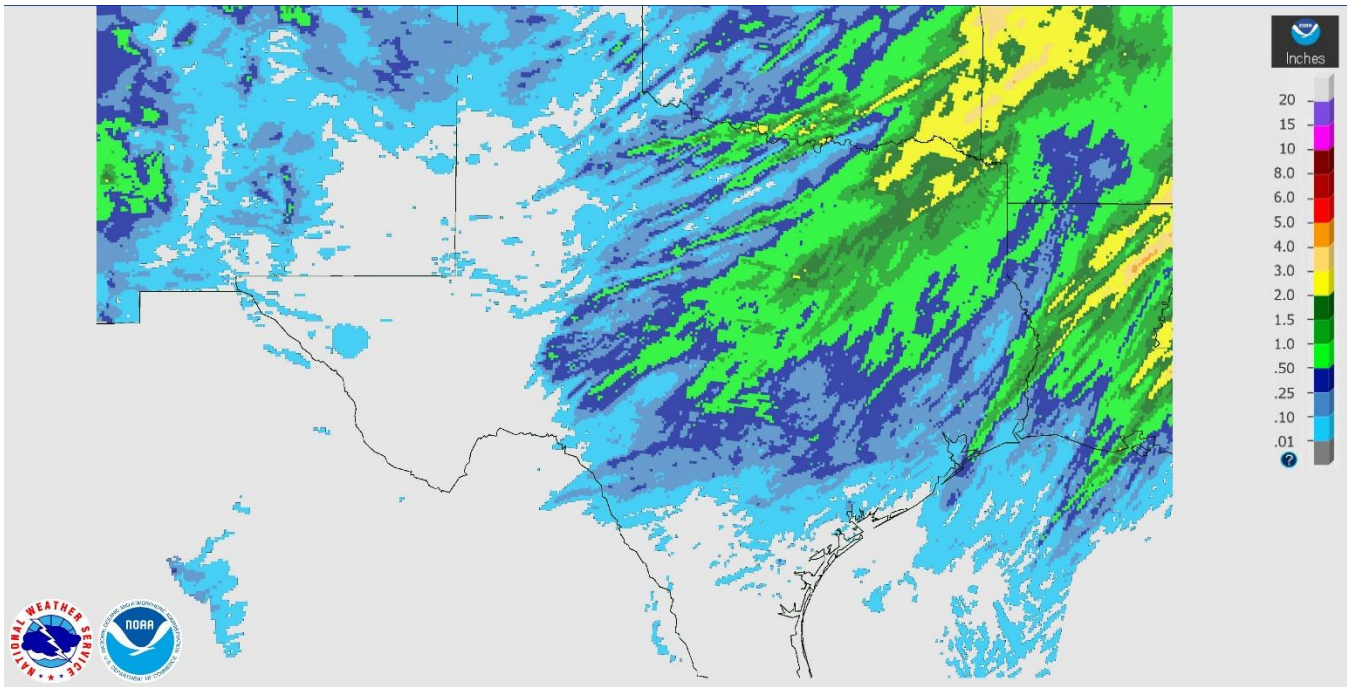
District	Subsoil Moisture Condition by District				Topsoil Moisture Condition by District				Days Suitable for Fieldwork
	Percentage of Acreage				Percentage of Acreage				
	Very Short	Short	Adequate	Surplus	Very Short	Short	Adequate	Surplus	
11	17	47	36	0	20	62	18	0	5.9
12	33	42	22	3	22	39	36	3	5.4
21	0	60	40	0	0	39	55	6	5.6
22	0	53	47	0	0	67	33	0	6.2
30	4	19	74	3	2	13	83	2	5.3
40	2	13	73	12	0	7	77	16	5.3
51	0	1	67	32	0	1	73	26	5.9
52	1	26	56	17	0	20	65	15	5.8
60	0	100	0	0	0	100	0	0	3.0
70	22	36	42	0	30	26	40	4	6.6
81	3	35	59	3	4	39	53	4	5.2
82	15	70	15	0	100	0	0	0	3.8
90	0	13	74	13	0	11	51	38	4.6
96	9	42	48	1	8	42	49	1	6.7
97	9	15	76	0	4	24	72	0	7.0
State	12	37	46	5	12	36	45	7	5.6

Texas Agricultural Districts

- 11 Northern High Plains
- 12 Southern High Plains
- 21 Northern Low Plains
- 22 Southern Low Plains
- 30 Cross Timbers
- 40 Blacklands
- 51 North East
- 52 South East
- 60 Trans-Pecos
- 70 Edwards Plateau
- 81 South Central
- 82 Coastal Bend
- 90 Upper Coast
- 96 South
- 97 Lower Valley



Seven Day Observed Regional Precipitation, March 31, 2024

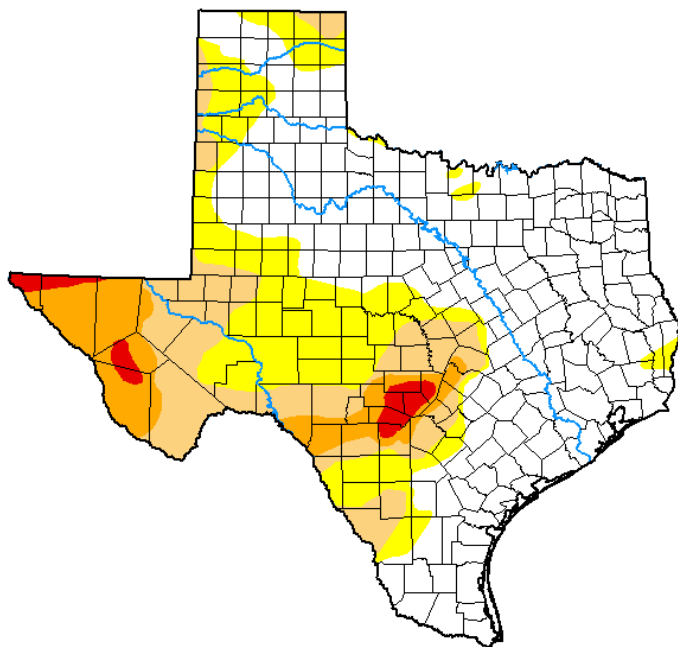


Source: National Weather Service, www.nws.noaa.gov

Drought Monitor, Map Released: March 28, 2024

U.S. Drought Monitor Texas

March 26, 2024
(Released Thursday, Mar. 28, 2024)
Valid 8 a.m. EDT



Drought Conditions (Percent Area)

	None	D0-D4	D1-D4	D2-D4	D3-D4	D4
Current	55.21	44.79	24.48	9.85	1.97	0.00
Last Week 03-19-2024	54.13	45.87	24.33	9.68	1.97	0.00
3 Months Ago 12-26-2023	40.22	59.78	39.21	17.38	5.68	0.68
Start of Calendar Year 01-02-2024	39.60	60.40	39.47	17.78	5.68	0.68
Start of Water Year 09-26-2023	3.03	96.97	80.64	59.66	38.06	12.68
One Year Ago 03-28-2023	19.12	80.88	67.24	46.39	17.33	3.78

Intensity:

- None
- D0 Abnormally Dry
- D1 Moderate Drought
- D2 Severe Drought
- D3 Extreme Drought
- D4 Exceptional Drought

The Drought Monitor focuses on broad-scale conditions. Local conditions may vary. For more information on the Drought Monitor, go to <https://droughtmonitor.unl.edu/About.aspx>

Author:

Brad Rippey
U.S. Department of Agriculture



droughtmonitor.unl.edu

Source: National Drought Mitigation Center, a partnership with USDA, U.S. Department of Commerce/NOAA, <http://droughtmonitor.unl.edu>