



Texas Crop Progress and Condition

Southern Plains Regional Field Office
Post Office Box 70 Austin, Texas 78767
(800) 626-3142 · FAX (855) 270-2725 · www.nass.usda.gov/tx

Issue: TX-CW1024

Weekly Summary for March 18 - March 24

Released: March 25, 2024

Crop conditions continued to improve due to rainfall in most of the state. Parts of the state welcomed rainfall, while the High Plains and Edwards Plateau were still in need. Rainfall ranged from trace amounts to 5.0 inches, with South East Texas, South Central, and the Upper Coast districts receiving the most rain. Drought conditions ranged from none to extreme drought with areas in the Trans-Pecos and southeast in the Edwards Plateau being the driest. There was an average of 5.0 days suitable for fieldwork.

Small Grains: Parts of the state welcomed rainfall, while the High Plains and the Edwards Plateau were still in need of rainfall. In the Northern High Plains and the Blacklands, rust was reported. In the Blacklands and South Central districts, oats continued to head out. Winter wheat headed reached 17 percent, down 7 points from the previous year. Oats headed reached 18 percent, down 13 points from the previous year.

Row Crops: Corn and sorghum continued to progress in the Blacklands, the Coastal Bend, the Upper Coast, and parts of the South Central districts, while planting continued in the Northern High Plains and the Southern High Plains. In South Central Texas, early planted corn was emerging in some areas. In the High Plains, the Southern Low Plains, and the Edwards Plateau, groundwork and pre-planting activities for cotton continued. In the Coastal Bend and the Upper Coast districts, cotton was beginning to emerge. Rice planting continued in some areas. Corn planted reached 46 percent, down 3 points from the previous year. Sorghum planted reached 37 percent, up 2 points from the previous year. Rice planted reached 20 percent, up 4 points from the previous year.

Fruit, Vegetable, and Specialty Crops: Fruit trees continued to bloom in the Edwards Plateau and the Cross Timbers. In the Edwards Plateau, the South Central, and the Trans-Pecos, pecan trees continued to bud. In South Texas, onion harvest was wrapping up with cantaloupe harvest progressing. In the Lower Valley, vegetable harvest continued, while citrus trees began setting fruit.

Livestock, Range and Pasture: Rainfall continued to improve pasture and range conditions. The improved soil moisture supported the greening of pastures in most areas, while some parts of the state are in need of additional rainfall. Pasture and range conditions were rated fair to poor. Livestock producers continued supplemental feeding.

**Crop Progress by Percent
For Week Ending March 24, 2024**

| Stage | Percentage of Acreage | | | |
|---------------------|-----------------------|---------------|---------------|----------------|
| | Current Week | Previous Week | Previous Year | 5 Year Average |
| Corn | | | | |
| Planted | 46 | 34 | 49 | 43 |
| Rice | | | | |
| Planted | 20 | (NA) | 16 | 16 |
| Sorghum | | | | |
| Planted | 37 | 27 | 35 | 36 |
| Winter Wheat | | | | |
| Headed | 17 | 13 | 24 | 18 |
| Oats | | | | |
| Headed | 18 | 12 | 31 | 18 |

NA – not available

**Crop Condition by Percent
For Week Ending March 24, 2024**

| Crop | Percent of Acreage | | | | | Index ¹ | |
|-------------------|--------------------|------|------|------|-----------|--------------------|------|
| | Excellent | Good | Fair | Poor | Very Poor | 2024 | 2023 |
| Wheat | 11 | 40 | 35 | 9 | 5 | 72 | 45 |
| Oats | 3 | 31 | 45 | 11 | 10 | 61 | 45 |
| Range and Pasture | 4 | 17 | 37 | 25 | 17 | 49 | 33 |

¹ The formula for the condition index is $I = (5V + 25P + 60F + 90G + 110E)/100$ where I = crop condition index and V, P, F, G, E = percentage of crop rated very poor, poor, fair, good, excellent.

**Soil Moisture and Days Suitable by District
For Week Ending March 24, 2024**

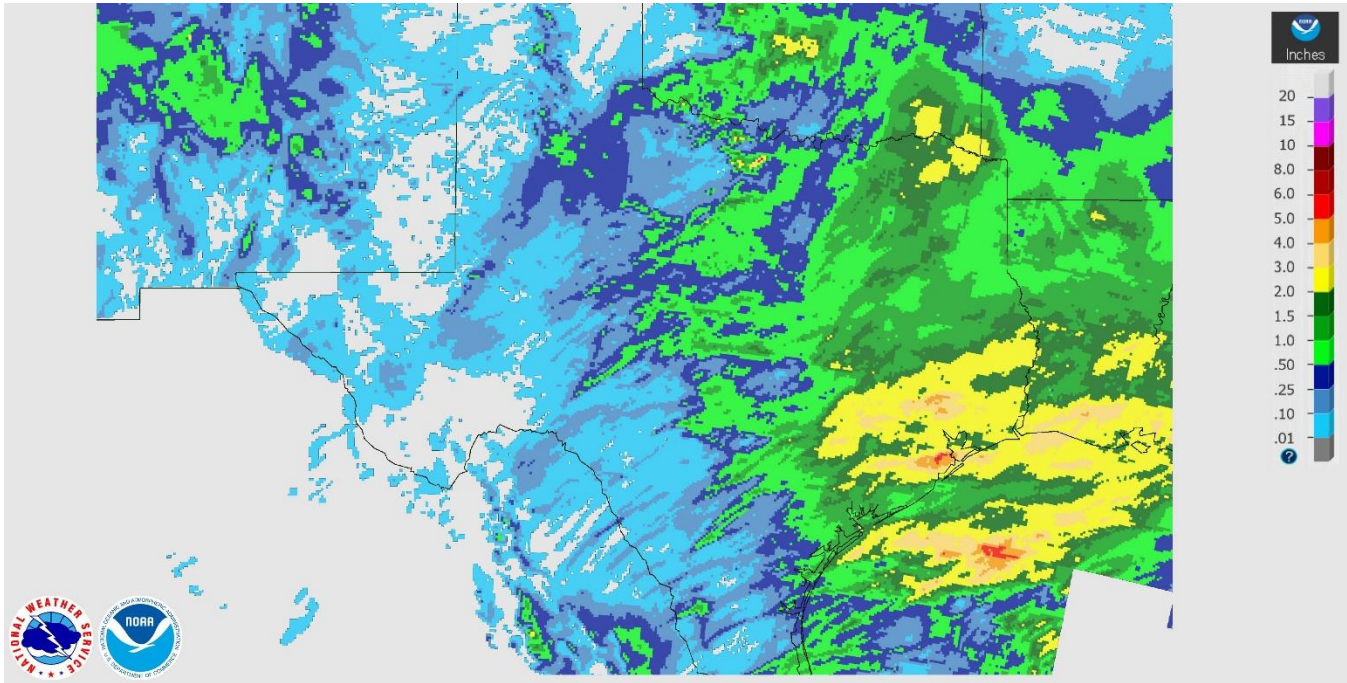
| District | Subsoil Moisture Condition by District | | | | Topsoil Moisture Condition by District | | | | Days Suitable for Fieldwork |
|----------|--|-------|----------|---------|--|-------|----------|---------|-----------------------------|
| | Percentage of Acreage | | | | Percentage of Acreage | | | | |
| | Very Short | Short | Adequate | Surplus | Very Short | Short | Adequate | Surplus | |
| 11 | 2 | 55 | 43 | 0 | 2 | 77 | 21 | 0 | 6.0 |
| 12 | 37 | 46 | 16 | 1 | 34 | 43 | 22 | 1 | 6.0 |
| 21 | 1 | 62 | 37 | 0 | 1 | 38 | 61 | 0 | 5.0 |
| 22 | 3 | 39 | 57 | 1 | 3 | 30 | 66 | 1 | 5.0 |
| 30 | 5 | 22 | 64 | 9 | 1 | 17 | 57 | 25 | 4.6 |
| 40 | 0 | 13 | 62 | 25 | 0 | 2 | 64 | 34 | 3.3 |
| 51 | 0 | 2 | 56 | 42 | 0 | 4 | 59 | 37 | 4.7 |
| 52 | 1 | 19 | 62 | 18 | 0 | 15 | 70 | 15 | 4.1 |
| 60 | 14 | 51 | 33 | 2 | 14 | 51 | 33 | 2 | 4.8 |
| 70 | 19 | 39 | 41 | 1 | 18 | 42 | 39 | 1 | 5.4 |
| 81 | 3 | 30 | 62 | 5 | 2 | 31 | 65 | 2 | 5.0 |
| 82 | 2 | 10 | 79 | 9 | 10 | 6 | 75 | 9 | 4.5 |
| 90 | 0 | 9 | 53 | 38 | 0 | 1 | 54 | 45 | 3.1 |
| 96 | 10 | 28 | 61 | 1 | 11 | 25 | 62 | 2 | 5.0 |
| 97 | 8 | 9 | 81 | 2 | 4 | 17 | 79 | 0 | 4.0 |
| State | 9 | 35 | 48 | 8 | 9 | 35 | 46 | 10 | 4.0 |

Texas Agricultural Districts

- 11 Northern High Plains
- 12 Southern High Plains
- 21 Northern Low Plains
- 22 Southern Low Plains
- 30 Cross Timbers
- 40 Blacklands
- 51 North East
- 52 South East
- 60 Trans-Pecos
- 70 Edwards Plateau
- 81 South Central
- 82 Coastal Bend
- 90 Upper Coast
- 96 South
- 97 Lower Valley

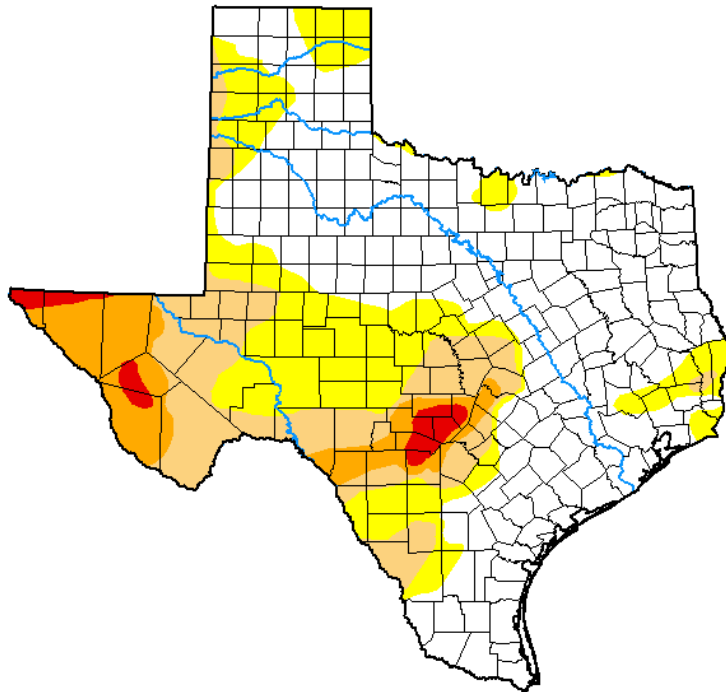


Seven Day Observed Regional Precipitation, March 24, 2024



Source: National Weather Service, www.nws.noaa.gov

Drought Monitor, Map Released: March 21, 2024



Drought Conditions (Percent Area)

| | None | D0-D4 | D1-D4 | D2-D4 | D3-D4 | D4 |
|---|-------|-------|-------|-------|-------|-------|
| Current | 54.13 | 45.87 | 24.33 | 9.68 | 1.97 | 0.00 |
| Last Week 03-12-2024 | 50.94 | 49.06 | 24.22 | 10.03 | 1.97 | 0.00 |
| 3 Months Ago 12-19-2023 | 35.24 | 64.76 | 42.68 | 18.20 | 6.47 | 0.86 |
| Start of Calendar Year 01-02-2024 | 39.60 | 60.40 | 39.47 | 17.78 | 5.68 | 0.68 |
| Start of Water Year 09-26-2023 | 3.03 | 96.97 | 80.64 | 59.66 | 38.06 | 12.68 |
| One Year Ago 03-21-2023 | 21.63 | 78.37 | 64.18 | 43.53 | 14.21 | 3.15 |

Intensity:

- None
- D0 Abnormally Dry
- D1 Moderate Drought
- D2 Severe Drought
- D3 Extreme Drought
- D4 Exceptional Drought

The Drought Monitor focuses on broad-scale conditions. Local conditions may vary. For more information on the Drought Monitor, go to <https://droughtmonitor.unl.edu/About.aspx>

Author:

Brad Rippey
U.S. Department of Agriculture



droughtmonitor.unl.edu

Source: National Drought Mitigation Center, a partnership with USDA, U.S. Department of Commerce/NOAA, <http://droughtmonitor.unl.edu>