



Texas Crop Progress and Condition

Southern Plains Regional Field Office
Post Office Box 70 Austin, Texas 78767
(800) 626-3142 · FAX (855) 270-2725 · www.nass.usda.gov/tx

Issue: TX-CW0924

Weekly Summary for March 11 - March 17

Released: March 18, 2024

In the Trans-Pecos district, dry and windy conditions continued, along with sightings of wildfires. Some producers throughout the state welcomed the week ending rainfall that allowed crops to progress. Rainfall ranged from trace amounts to 5.0 inches, with the Blacklands and North East Texas receiving the most rain. Drought conditions ranged from none to extreme drought with areas in the Trans-Pecos and the Edwards Plateau being the driest. There was an average of 5.3 days suitable for fieldwork.

Small Grains: Recent rainfall across the state allowed small grains to continue to progress. In the Southern Low Plains and the Edwards Plateau, rainfall helped with winter wheat growth. In the Blacklands, rust was found in some fields. In the southern part of the state, winter wheat and oats continued to head out. Winter wheat headed reached 13 percent, down 9 points from the previous year. Oats headed reached 12 percent, down 15 points from the previous year.

Row Crops: Corn and sorghum planting continued in most areas of the state. Corn planted reached 34 percent, up 3 points from the previous year. Sorghum planted reached 27 percent, up 1 point from the previous year.

Fruit, Vegetable, and Specialty Crops: Vegetables continued to progress in the Southern High Plains. In the Edwards Plateau, pecan trees continued to bud out.

Livestock, Range and Pasture: Pasture and range forages continued to green up with the help of recent rainfall. Pasture and range conditions were rated fair to poor. Some livestock producers continued supplemental feeding.

**Crop Progress by Percent
For Week Ending March 17, 2024**

| Stage | Percentage of Acreage | | | |
|---------------------|-----------------------|---------------|---------------|----------------|
| | Current Week | Previous Week | Previous Year | 5 Year Average |
| Corn | | | | |
| Planted | 34 | 20 | 37 | 33 |
| Sorghum | | | | |
| Planted | 27 | 18 | 26 | 25 |
| Winter Wheat | | | | |
| Headed | 13 | 10 | 22 | 17 |
| Oats | | | | |
| Headed | 12 | 9 | 27 | 18 |

**Crop Condition by Percent
For Week Ending March 17, 2024**

| Crop | Percent of Acreage | | | | | Index ¹ | |
|-------------------|--------------------|------|------|------|-----------|--------------------|------|
| | Excellent | Good | Fair | Poor | Very Poor | 2024 | 2023 |
| Corn | 0 | 0 | 0 | 0 | 0 | 0 | 0 |
| Wheat | 9 | 37 | 35 | 12 | 7 | 68 | 49 |
| Oats | 2 | 21 | 51 | 15 | 11 | 56 | 43 |
| Range and Pasture | 2 | 12 | 35 | 31 | 20 | 43 | 37 |

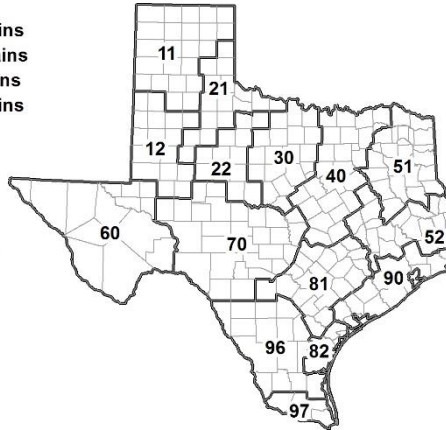
¹ The formula for the condition index is $I = (5V + 25P + 60F + 90G + 110E)/100$ where I = crop condition index and V, P, F, G, E = percentage of crop rated very poor, poor, fair, good, excellent.

**Soil Moisture and Days Suitable by District
For Week Ending March 17, 2024**

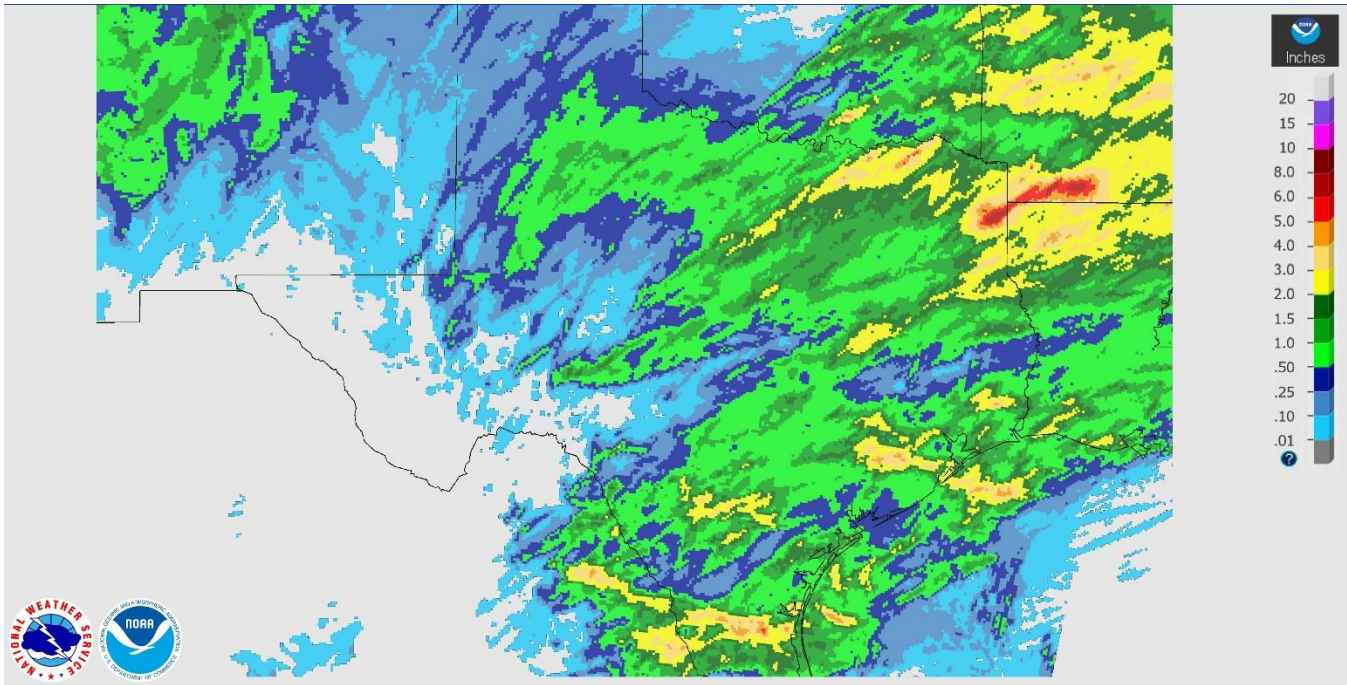
| District | Subsoil Moisture Condition by District | | | | Topsoil Moisture Condition by District | | | | Days Suitable for Fieldwork |
|----------|--|-------|----------|---------|--|-------|----------|---------|-----------------------------|
| | Percentage of Acreage | | | | Percentage of Acreage | | | | |
| | Very Short | Short | Adequate | Surplus | Very Short | Short | Adequate | Surplus | |
| 11 | 4 | 40 | 56 | 0 | 3 | 76 | 20 | 1 | 5.9 |
| 12 | 14 | 65 | 20 | 1 | 23 | 60 | 16 | 1 | 5.5 |
| 21 | 1 | 47 | 52 | 0 | 1 | 36 | 63 | 0 | 5.8 |
| 22 | 5 | 29 | 65 | 1 | 2 | 30 | 63 | 5 | 5.1 |
| 30 | 5 | 31 | 58 | 6 | 0 | 17 | 72 | 11 | 5.1 |
| 40 | 3 | 13 | 62 | 22 | 7 | 9 | 66 | 18 | 4.7 |
| 51 | 0 | 3 | 74 | 23 | 0 | 5 | 65 | 30 | 5.8 |
| 52 | 1 | 29 | 63 | 7 | 0 | 29 | 56 | 15 | 5.2 |
| 60 | 8 | 46 | 45 | 1 | 8 | 82 | 9 | 1 | 3.7 |
| 70 | 19 | 34 | 46 | 1 | 19 | 44 | 35 | 2 | 5.2 |
| 81 | 0 | 31 | 69 | 0 | 3 | 41 | 56 | 0 | 5 |
| 82 | 0 | 9 | 86 | 5 | 10 | 4 | 78 | 8 | 5.5 |
| 90 | 0 | 21 | 63 | 16 | 0 | 23 | 59 | 18 | 4.3 |
| 96 | 7 | 36 | 55 | 2 | 15 | 21 | 62 | 2 | 6.5 |
| 97 | 9 | 15 | 74 | 2 | 6 | 24 | 70 | 0 | 4.5 |
| State | 6 | 35 | 54 | 5 | 8 | 41 | 45 | 6 | 5.3 |

Texas Agricultural Districts

- 11 Northern High Plains
- 12 Southern High Plains
- 21 Northern Low Plains
- 22 Southern Low Plains
- 30 Cross Timbers
- 40 Blacklands
- 51 North East
- 52 South East
- 60 Trans-Pecos
- 70 Edwards Plateau
- 81 South Central
- 82 Coastal Bend
- 90 Upper Coast
- 96 South
- 97 Lower Valley

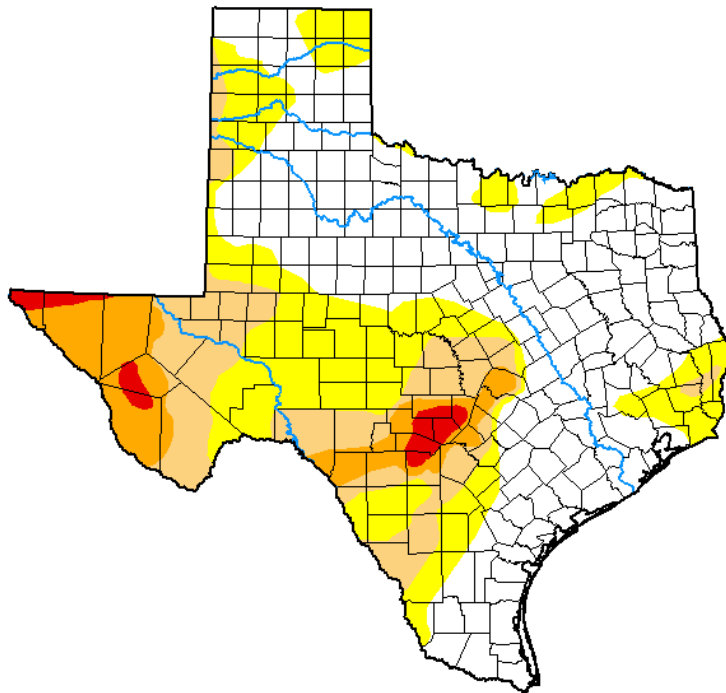


Seven Day Observed Regional Precipitation, March 14, 2024



Source: National Weather Service, www.nws.noaa.gov

Drought Monitor, Map Released: March 17, 2024



Drought Conditions (Percent Area)

| | None | D0-D4 | D1-D4 | D2-D4 | D3-D4 | D4 |
|---|-------|-------|-------|-------|-------|-------|
| Current | 50.94 | 49.06 | 24.22 | 10.03 | 1.97 | 0.00 |
| Last Week 03-05-2024 | 55.96 | 44.04 | 22.67 | 8.94 | 1.97 | 0.00 |
| 3 Months Ago 12-12-2023 | 32.59 | 67.41 | 43.80 | 18.04 | 6.48 | 0.86 |
| Start of Calendar Year 01-02-2024 | 39.60 | 60.40 | 39.47 | 17.78 | 5.68 | 0.68 |
| Start of Water Year 09-26-2023 | 3.03 | 96.97 | 80.64 | 59.66 | 38.06 | 12.68 |
| One Year Ago 03-14-2023 | 22.03 | 77.97 | 64.71 | 41.59 | 14.21 | 1.84 |

Intensity:

- None
- D0 Abnormally Dry
- D1 Moderate Drought
- D2 Severe Drought
- D3 Extreme Drought
- D4 Exceptional Drought

The Drought Monitor focuses on broad-scale conditions. Local conditions may vary. For more information on the Drought Monitor, go to <https://droughtmonitor.unl.edu/About.aspx>

Author:

Curtis Riganti
National Drought Mitigation Center



droughtmonitor.unl.edu

Source: National Drought Mitigation Center, a partnership with USDA, U.S. Department of Commerce/NOAA, <http://droughtmonitor.unl.edu>