



## Texas Crop Progress and Condition

Southern Plains Regional Field Office  
Post Office Box 70 Austin, Texas 78767  
(800) 626-3142 · FAX (855) 270-2725 · [www.nass.usda.gov/tx](http://www.nass.usda.gov/tx)

**Issue: TX-CW0925**

**Weekly Summary for March 10 - March 16**

**Released: March 17, 2025**

Most of the state experienced high winds and warm temperatures with several wildfires reported. Rainfall ranged from trace amounts up to 0.5 of an inch, with North East Texas and South East Texas receiving the most rain. Drought conditions ranged from none to exceptional drought with areas in the Trans-Pecos, the Edwards Plateau, and South Central Texas being the driest. There was an average of 5.3 days suitable for fieldwork.

**Small Grains:** In the Southern High Plains and the Cross Timbers, winter wheat was heading out. In the Blacklands, winter wheat and oats were recovering from freeze damage. Winter wheat headed reached 15 percent, up 2 points from the previous year, but down 3 points from normal. Oats headed reached 14 percent, up 2 points from the previous year, but down 4 points from normal.

**Row Crops:** In the Blacklands and the Edwards Plateau, producers were planting corn. In the Southern High Plains, producers were waiting for moisture before planting corn. In the Edwards Plateau and South Central Texas, producers were planting sorghum. Corn planted reached 32 percent, unchanged from the previous year, but down 1 point from normal. Sorghum planted reached 26 percent, unchanged from the previous year, but up 1 point from normal. In the Upper Coast and South Central Texas, producers were planting rice.

**Fruit, Vegetable, and Specialty Crops:** In South Texas, producers were planting cantaloupe. In the Lower Valley producers were planting watermelon and harvesting leafy greens, cabbage, onions, and carrots.

**Range and Pasture:** Most of the state experienced high winds, with increased fire warnings. A range fire was reported in the Northern High Plains. The Cross Timbers, the Blacklands, and South Texas experienced minor fires. Producers continued supplemental feeding of livestock. Pasture and range conditions were rated at 71 percent, poor to very poor.

**Crop Progress by Percent  
For Week Ending March 16, 2025**

Stage	Percentage of Acreage			
	Current Week	Previous Week	Previous Year	5 Year Average
<b>Corn</b>				
Planted	32	24	32	33
<b>Sorghum</b>				
Planted	26	20	26	25
<b>Winter Wheat</b>				
Headed	15	10	13	18
<b>Oats</b>				
Headed	14	9	12	18

**Crop Condition by Percent  
For Week Ending March 16, 2025**

Crop	Percent of Acreage					Index <sup>1</sup>	
	Excellent	Good	Fair	Poor	Very Poor	2025	2024
Winter Wheat	5	23	33	28	11	54	68
Oats	2	9	20	28	41	31	56
Range and Pasture	1	8	20	41	30	32	43

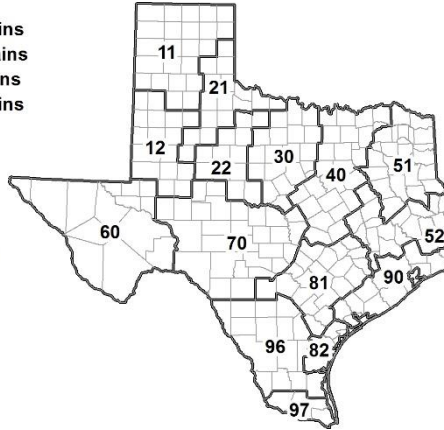
<sup>1</sup> The formula for the condition index is  $I = (110E + 90G + 60F + 25P + 5V)/100$  where I = crop condition index and E, G, F, P, V = percentage of crop rated excellent, good, fair, poor, very poor.

**Soil Moisture and Days Suitable by District  
For Week Ending March 16, 2025**

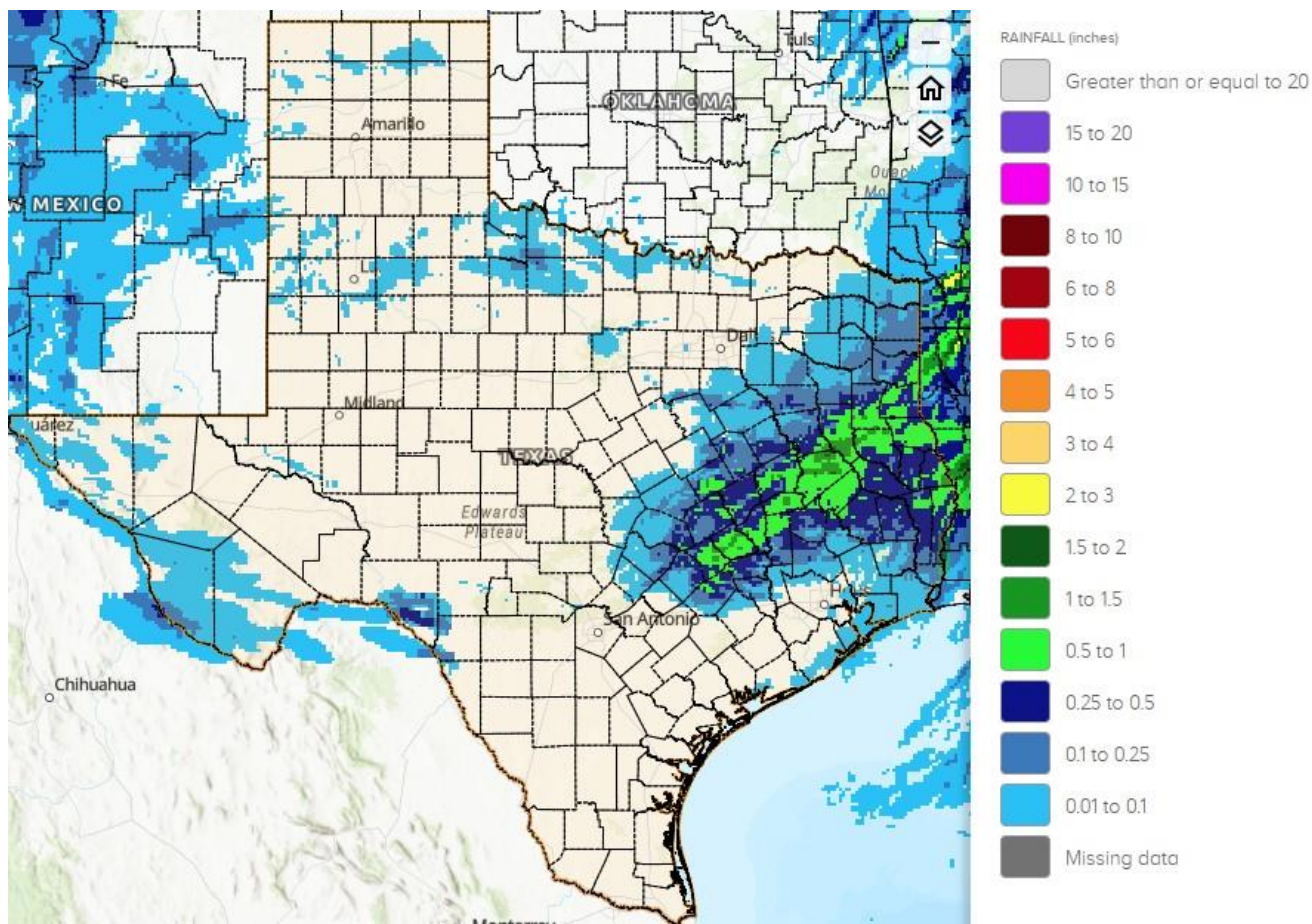
District	Subsoil Moisture Condition by District				Topsoil Moisture Condition by District				Days Suitable for Fieldwork
	Percentage of Acreage				Percentage of Acreage				
	Very Short	Short	Adequate	Surplus	Very Short	Short	Adequate	Surplus	
11	35	23	42	0	39	43	18	0	3.9
12	79	21	0	0	77	23	0	0	6.0
21	26	65	9	0	24	50	26	0	4.9
22	45	44	11	0	42	47	11	0	5.4
30	13	48	39	0	19	41	40	0	5.9
40	11	23	57	9	6	20	67	7	5.2
51	0	11	70	19	0	13	68	19	5.9
52	2	15	55	28	2	16	65	17	6.2
60	36	28	36	0	37	27	36	0	7.0
70	36	54	9	1	64	31	5	0	5.5
81	41	50	9	0	65	23	12	0	5.6
82	61	31	8	0	57	35	8	0	7.0
90	0	5	89	6	0	12	83	5	6.1
96	50	46	4	0	50	45	5	0	6.8
97	23	38	39	0	33	50	17	0	5.4
State	36	31	30	3	39	32	27	2	5.3

**Texas Agricultural Districts**

- 11 Northern High Plains
- 12 Southern High Plains
- 21 Northern Low Plains
- 22 Southern Low Plains
- 30 Cross Timbers
- 40 Blacklands
- 51 North East
- 52 South East
- 60 Trans-Pecos
- 70 Edwards Plateau
- 81 South Central
- 82 Coastal Bend
- 90 Upper Coast
- 96 South
- 97 Lower Valley

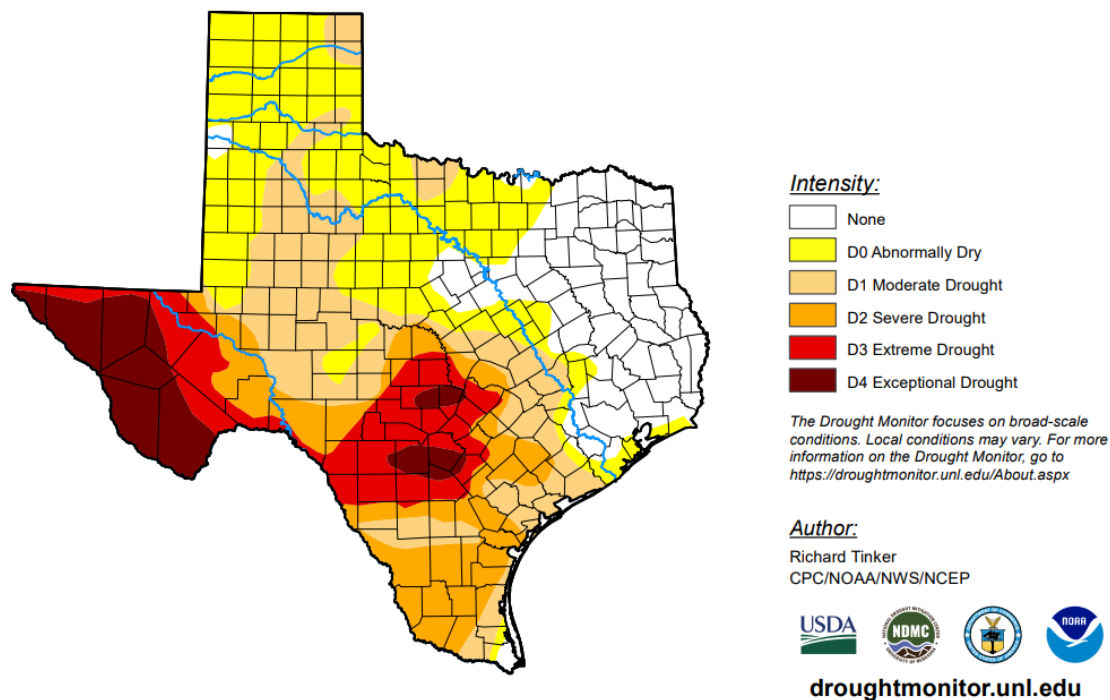


## Seven Day Observed Regional Precipitation, March 16, 2025



Source: National Weather Service, [www.nws.noaa.gov](http://www.nws.noaa.gov)

## Drought Monitor, Map Released: March 13, 2025



Source: National Drought Mitigation Center, a partnership with USDA, U.S. Department of Commerce/NOAA, <http://droughtmonitor.unl.edu>