



## Texas Crop Progress and Condition

Southern Plains Regional Field Office  
Post Office Box 70 Austin, Texas 78767  
(800) 626-3142 · FAX (855) 270-2725 · [www.nass.usda.gov/tx](http://www.nass.usda.gov/tx)

Issue: TX-CW0424 correction

Weekly Summary for February 5 - February 11

Released: February 12, 2024

Note: This is a revised version.

Most the state experienced above normal temperatures early in the week before a cold front moved through and brought snow to the northern parts of the state. Rainfall ranged from trace amounts to 4.0 inches with East Texas receiving the most rain. Drought conditions ranged from none to extreme drought with areas in the Trans-Pecos and the Edwards Plateau districts being the driest. There was an average of 4.5 days suitable for fieldwork.

**Small Grains:** Small grains continued to show improvement due to warmer temperatures and longer periods of sunlight. Some producers began fertilizer applications on winter wheat fields. Winter wheat headed reached 3 percent, down 9 points from the previous year. Oats headed reached 2 percent, down 12 points from the previous year.

**Row Crops:** While some producers in northern parts of the state delayed planting due to the recent moisture, those in the Coastal Bend and the Lower Valley were planting corn and sorghum.

**Fruit, Vegetable, and Specialty Crops:** In the Lower Valley, sugarcane, citrus and cool vegetable harvest progressed.

**Livestock, Range and Pasture:** Pasture and range forages have responded to recent moisture and warmer temperatures. Stock tank levels have risen due to recent rains. Pasture and range conditions were rated poor to fair. Livestock supplemental feeding continued across the state.

**Crop Progress by Percent**  
For Week Ending February 11, 2024

Stage	Percentage of Acreage			
	Current Week	Previous Week	Previous Year	5 Year Average
<b>Winter Wheat</b> Headed	3	1	12	9
<b>Oats</b> Headed	2	1	14	8

**Crop Condition by Percent**  
For Week Ending February 11, 2024

Crop	Percent of Acreage					Index <sup>1</sup>	
	Excellent	Good	Fair	Poor	Very Poor	2024	2023
Wheat	10	32	39	11	8	66	41
Oats	1	19	36	18	26	46	30
Range and Pasture	1	9	32	39	19	39	34

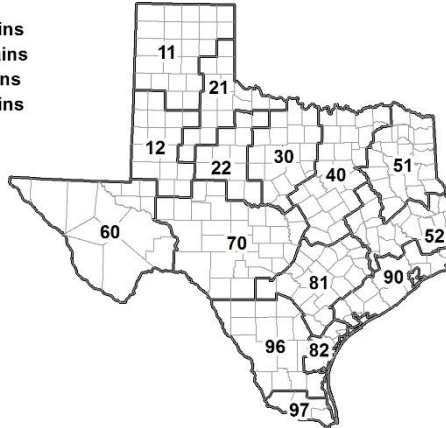
<sup>1</sup> The formula for the condition index is  $I = (5V + 25P + 60F + 90G + 110E)/100$  where I = crop condition index and V, P, F, G, E = percentage of crop rated very poor, poor, fair, good, excellent.

**Soil Moisture and Days Suitable by District**  
For Week Ending February 11, 2024

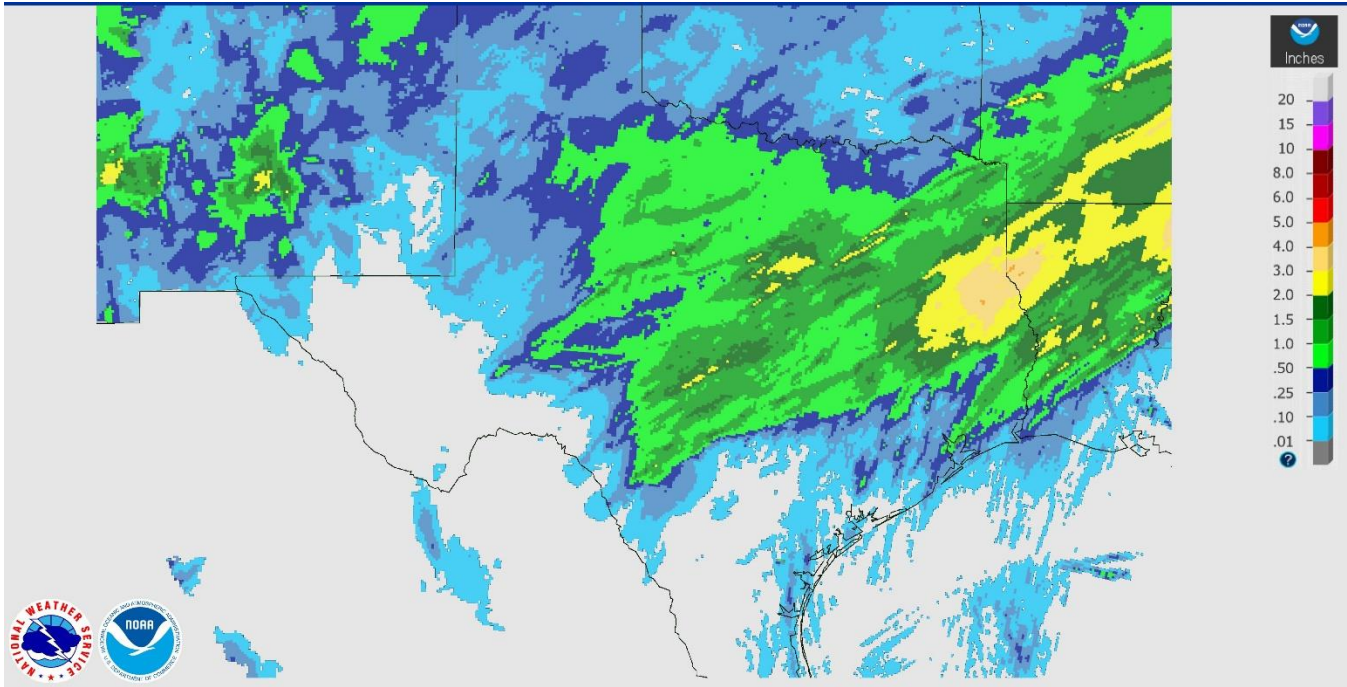
District	Subsoil Moisture Condition by District				Topsoil Moisture Condition by District				Days Suitable for Fieldwork
	Percentage of Acreage				Percentage of Acreage				
	Very Short	Short	Adequate	Surplus	Very Short	Short	Adequate	Surplus	
11	10	14	73	3	6	5	86	3	5.1
12	21	63	16	0	23	50	27	0	5.0
21	9	36	55	0	3	41	55	1	5.0
22	2	30	66	2	0	20	64	16	4.1
30	8	34	58	0	3	24	65	8	5.7
40	1	6	53	40	1	2	32	65	2.7
51	0	0	44	56	0	0	45	55	3.6
52	0	1	57	42	0	1	60	39	3.7
60	0	0	100	0	0	24	76	0	6.0
70	16	25	58	1	14	25	60	1	5.0
81	2	20	56	22	1	7	85	7	5.2
82	0	8	68	24	3	7	64	26	4.4
90	0	1	57	42	0	1	35	64	2.4
96	7	27	65	1	6	29	63	2	5.0
97	15	23	60	2	19	29	52	0	6.0
State	8	25	54	13	7	19	56	18	4.5

**Texas Agricultural Districts**

- 11 Northern High Plains
- 12 Southern High Plains
- 21 Northern Low Plains
- 22 Southern Low Plains
- 30 Cross Timbers
- 40 Blacklands
- 51 North East
- 52 South East
- 60 Trans-Pecos
- 70 Edwards Plateau
- 81 South Central
- 82 Coastal Bend
- 90 Upper Coast
- 96 South
- 97 Lower Valley

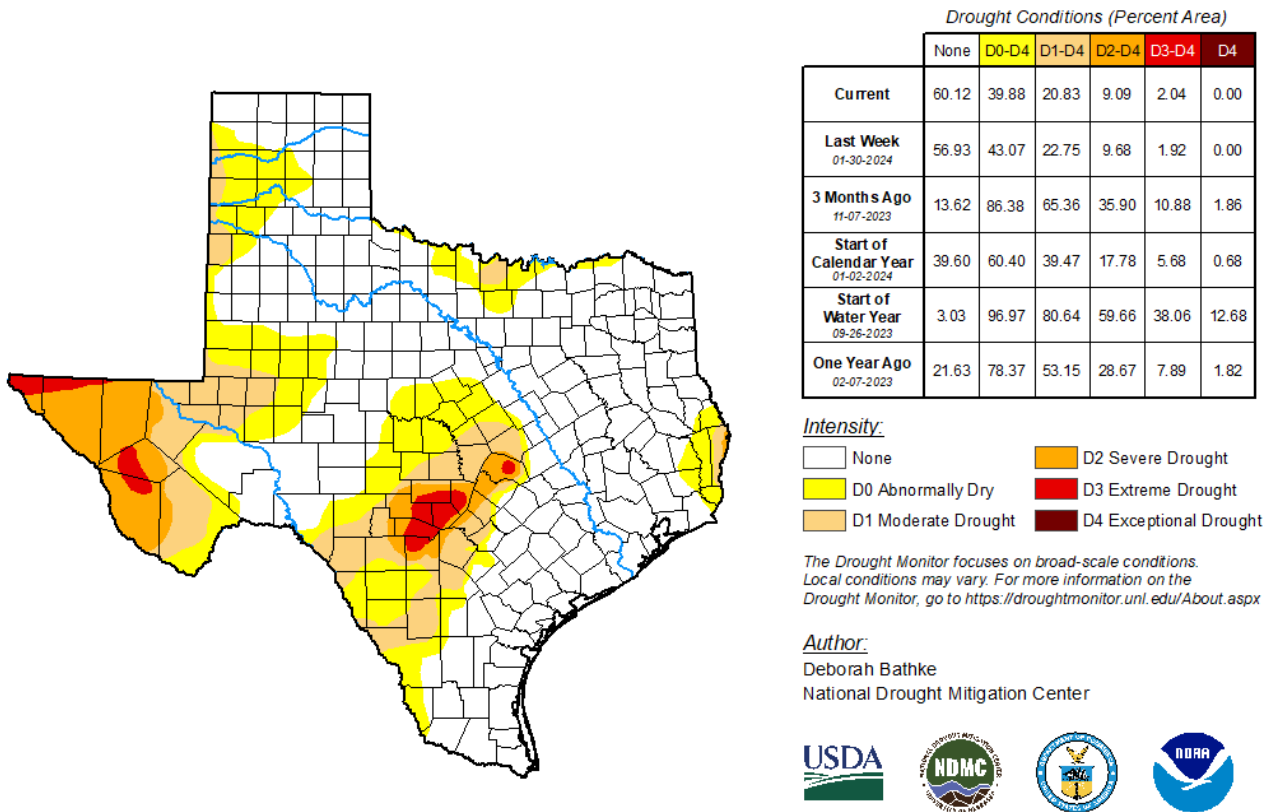


# Seven Day Observed Regional Precipitation, February 11, 2024



Source: National Weather Service, [www.nws.noaa.gov](http://www.nws.noaa.gov)

## Drought Monitor, Map Released: February 8, 2024



Source: National Drought Mitigation Center, a partnership with USDA, U.S. Department of Commerce/NOAA, <http://droughtmonitor.unl.edu>

[droughtmonitor.unl.edu](http://droughtmonitor.unl.edu)