



## Texas Crop Progress and Condition

Southern Plains Regional Field Office  
Post Office Box 70 Austin, Texas 78767  
(800) 626-3142 · FAX (855) 270-2725 · [www.nass.usda.gov/tx](http://www.nass.usda.gov/tx)

Issue: TX-CW0324 correction

Weekly Summary for January 29 - February 4

Released: February 5, 2024

Note: This is a revised version.

Much of the state experienced warmer temperatures and welcomed additional moisture. Rainfall ranged from trace amounts to 5.0 inches with South East Texas, the Upper Coast, and South Central districts receiving the most rain. Drought conditions ranged from none to extreme drought with areas in the Trans-Pecos and the Edwards Plateau districts being the driest. There was an average of 4.6 days suitable for fieldwork.

**Small Grains:** Small grains showed signs of improvement due to warmer temperatures and recent rains. In the Cross Timbers district, freeze damage continued to be reported. Winter wheat headed reached 1 percent, down 6 points from the previous year. Oats headed reached 1 percent, down 5 points from the previous year.

**Row Crops:** While the recent rains delayed field preparation, producers were anticipating to begin planting in the coming weeks. In the Lower Valley, some producers were planting corn.

**Fruit, Vegetable, and Specialty Crops:** In the Lower Valley, sugarcane, citrus, and cool vegetable harvest continued. In the Trans-Pecos district, pecan harvest was coming to a close.

**Livestock, Range and Pasture:** Pasture and range conditions were rated poor to fair. Producers continued supplemental feeding.

**Crop Progress by Percent**  
For Week Ending February 4, 2024

Stage	Percentage of Acreage			
	Current Week	Previous Week	Previous Year	5 Year Average
<b>Winter Wheat</b> Headed	1	-	7	7
<b>Oats</b> Headed	1	-	6	4

- Represents zero.

**Crop Condition by Percent**  
For Week Ending February 4, 2024

Crop	Percent of Acreage					Index <sup>1</sup>	
	Excellent	Good	Fair	Poor	Very Poor	2024	2023
Wheat	15	31	34	9	11	68	41
Oats	3	13	40	19	25	45	30
Range and Pasture	1	8	32	45	14	39	34

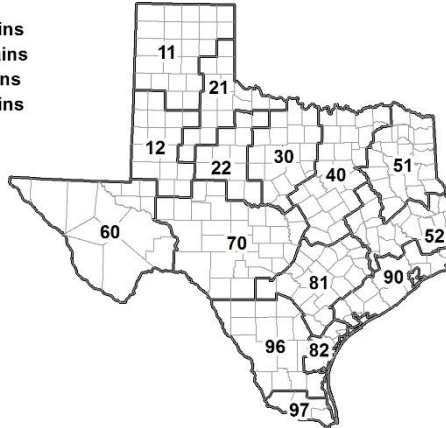
<sup>1</sup> The formula for the condition index is  $I = (5V + 25P + 60F + 90G + 110E)/100$  where I = crop condition index and V, P, F, G, E = percentage of crop rated very poor, poor, fair, good, excellent.

**Soil Moisture and Days Suitable by District**  
For Week Ending February 4, 2024

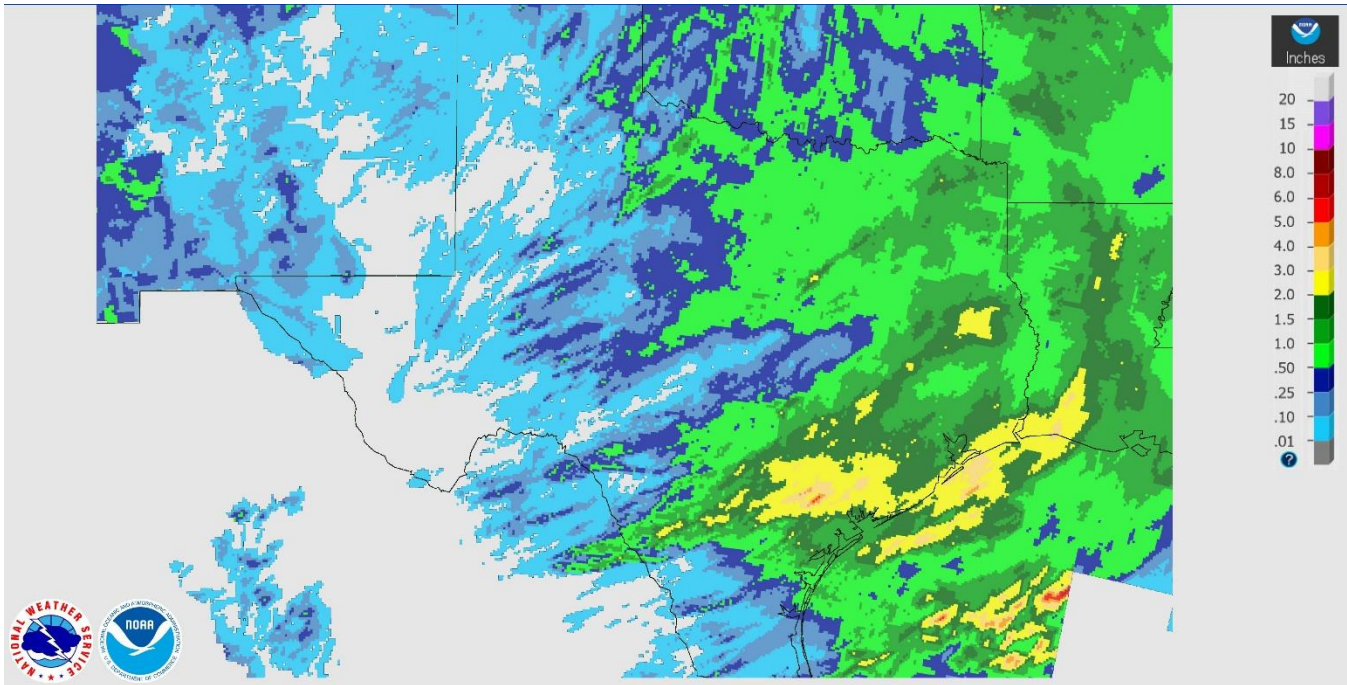
District	Subsoil Moisture Condition by District				Topsoil Moisture Condition by District				Days Suitable for Fieldwork
	Percentage of Acreage				Percentage of Acreage				
	Very Short	Short	Adequate	Surplus	Very Short	Short	Adequate	Surplus	
11	1	5	93	1	1	1	90	8	3.5
12	26	54	19	1	28	56	15	1	7.0
21	4	45	51	0	4	41	55	0	6.1
22	3	33	64	0	0	21	73	6	4.3
30	6	29	63	2	1	18	68	13	5.6
40	2	2	54	42	1	3	58	38	2.5
51	0	11	45	44	0	11	44	45	3.7
52	0	1	54	45	0	1	60	39	3.5
60	0	0	100	0	0	0	100	0	7.0
70	10	15	75	0	11	27	62	0	6.7
81	0	12	61	27	0	0	73	27	4.6
82	0	13	58	29	0	12	55	33	1.1
90	0	6	34	60	1	6	36	57	3.0
96	7	21	71	1	6	20	73	1	5.3
97	14	20	64	2	17	31	52	0	6.8
State	31	30	29	10	25	29	34	12	4.0

**Texas Agricultural Districts**

- 11 Northern High Plains
- 12 Southern High Plains
- 21 Northern Low Plains
- 22 Southern Low Plains
- 30 Cross Timbers
- 40 Blacklands
- 51 North East
- 52 South East
- 60 Trans-Pecos
- 70 Edwards Plateau
- 81 South Central
- 82 Coastal Bend
- 90 Upper Coast
- 96 South
- 97 Lower Valley

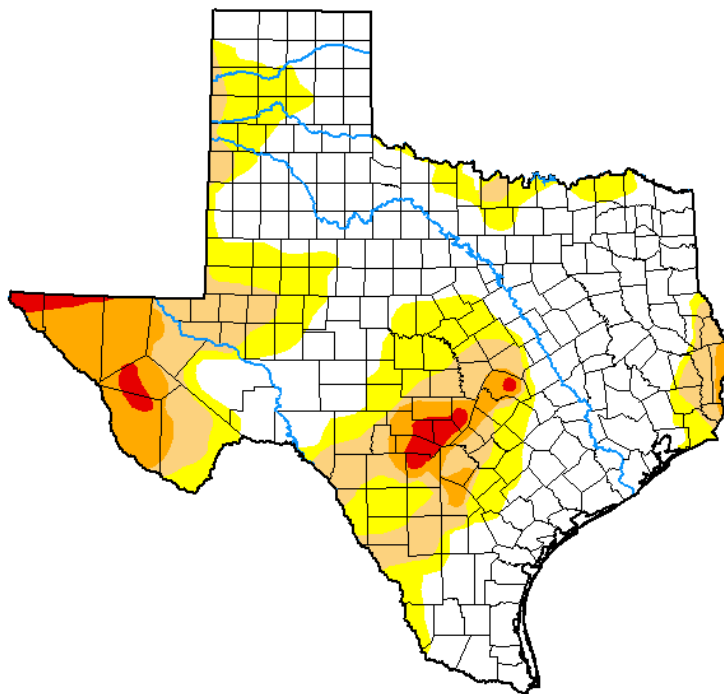


# Seven Day Observed Regional Precipitation, February 4, 2024



Source: National Weather Service, [www.nws.noaa.gov](http://www.nws.noaa.gov)

## Drought Monitor, Map Released: February 1, 2024



Drought Conditions (Percent Area)

	None	D0-D4	D1-D4	D2-D4	D3-D4	D4
<b>Current</b>	56.93	43.07	22.75	9.68	1.92	0.00
<b>Last Week</b> <i>01-23-2024</i>	48.36	51.64	26.66	11.82	3.25	0.00
<b>3 Months Ago</b> <i>10-31-2023</i>	13.61	86.39	65.37	38.54	10.94	1.78
<b>Start of Calendar Year</b> <i>01-02-2024</i>	39.60	60.40	39.47	17.78	5.68	0.68
<b>Start of Water Year</b> <i>09-26-2023</i>	3.03	96.97	80.64	59.66	38.06	12.68
<b>One Year Ago</b> <i>01-31-2023</i>	19.54	80.46	53.35	28.62	7.89	1.80

**Intensity:**

- None
- D0 Abnormally Dry
- D1 Moderate Drought
- D2 Severe Drought
- D3 Extreme Drought
- D4 Exceptional Drought

The Drought Monitor focuses on broad-scale conditions. Local conditions may vary. For more information on the Drought Monitor, go to <https://droughtmonitor.unl.edu/About.aspx>

**Author:**

Brian Fuchs  
National Drought Mitigation Center



[droughtmonitor.unl.edu](http://droughtmonitor.unl.edu)

Source: National Drought Mitigation Center, a partnership with USDA, U.S. Department of Commerce/NOAA, <http://droughtmonitor.unl.edu>