



Texas Crop Progress and Condition

Southern Plains Regional Field Office
Post Office Box 70 Austin, Texas 78767
(800) 626-3142 · FAX (855) 270-2725 · www.nass.usda.gov/tx

Issue: TX-CW3823

Weekly Summary for October 2 - October 8

Released: October 10, 2023

Cooler temperatures provided some relief across the state, while some districts received much needed rain. Rainfall ranged from trace amounts to 8 inches with the Upper Coast and North East Texas receiving the most rain. Drought conditions ranged from none to exceptional drought with areas in the South Central district, the Upper Coast, and South East Texas being the driest. There was an average of 5.6 days suitable for fieldwork.

Small Grains: Small grains planting was underway across the state. Winter wheat planted reached 55 percent, down 2 points from the previous year. Winter wheat emerged reached 28 percent, up 1 point from the previous year.

Row Crops:

In the Northern Low Plains, some crops were damaged by hail. Corn harvest reached 83 percent, down 1 point from the previous year. Sorghum harvested for grain reached 88 percent, down 6 points from the previous year. In the Southern High Plains, cotton harvest began with a slow start, while some producers destroyed failed acres. Southern High Plains producers were defoliating as inexpensive as possible to cut their expenses. In the Southern Low Plains, some cotton was damaged by hail. In the Edwards Plateau, producers were preparing cotton fields for harvest. Cotton bolls opening reached 76 percent for the state, down 1 point from the previous year. Cotton harvested reached 32 percent, down 2 points from the previous year. In the Northern High Plains, sunflower fields that survived the recent hailstorms were hoping to begin harvest soon. Sunflowers harvested reached 80 percent, down 5 points from the previous year. Rice harvested reached 95 percent, down 4 points from the previous year. Soybean harvest reached 52 percent, down 1 point from the previous year. In South Texas, peanut harvest was delayed due to rain. Peanuts mature reached 52 percent, up 2 points from the previous year. Peanut harvest reached 11 percent, down 6 points from the previous year.

Fruit, Vegetable, and Specialty Crops:

In the Northern High Plains, producers were beginning to harvest peas. In South Texas, producers were moving to their fall crops. In the Lower Valley, citrus producers reported the fruit was smaller due to ongoing drought conditions. In the South Central district, pecan scab was evident in some improved orchards.

Livestock, Range and Pasture:

Range and pasture conditions across the state improved with recent rainfall. Range and pasture condition was rated very poor to poor. Livestock producers continued to supplement stock with hay, while some were able to stop supplementation.

Crop Progress by Percent
For Week Ending October 8, 2023

Stage	Percentage of Acreage			
	Current Week	Previous Week	Previous Year	5 Year Average
Corn				
Mature	96	91	99	93
Harvested	83	78	84	80
Cotton				
Bolls Opening	76	68	77	76
Harvested	32	28	34	29
Peanuts				
Mature	52	40	50	43
Harvested	11	7	17	12
Rice				
Harvested	95	94	99	99
Sorghum				
Mature	97	94	100	94
Harvested	88	85	94	87
Soybeans				
Dropping Leaves	90	86	99	90
Harvested	52	47	53	66
Sunflowers				
Harvested	80	75	85	74
Winter Wheat				
Planted	55	45	57	53
Emerged	28	13	27	26

Crop Condition by Percent
For Week Ending October 8, 2023

Crop	Percent of Acreage					Index ¹	
	Excellent	Good	Fair	Poor	Very Poor	2023	2022
Corn	12	37	27	15	9	67	42
Cotton	2	13	24	28	33	37	34
Peanuts	3	36	45	14	2	66	62
Rice	8	55	35	2	0	80	N/A
Sorghum	16	29	22	17	16	62	48
Soybeans	7	28	37	23	5	61	35
Range and Pasture	1	7	24	33	35	32	39

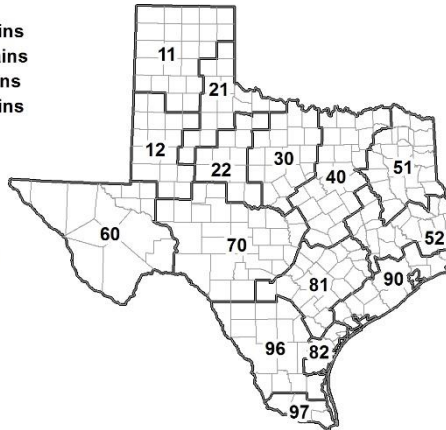
¹ The formula for the condition index is $I = (5V + 25P + 60F + 90G + 110E)/100$ where I = crop condition index and V, P, F, G, E = percentage of crop rated very poor, poor, fair, good, excellent.

Soil Moisture and Days Suitable by District
For Week Ending October 8, 2023

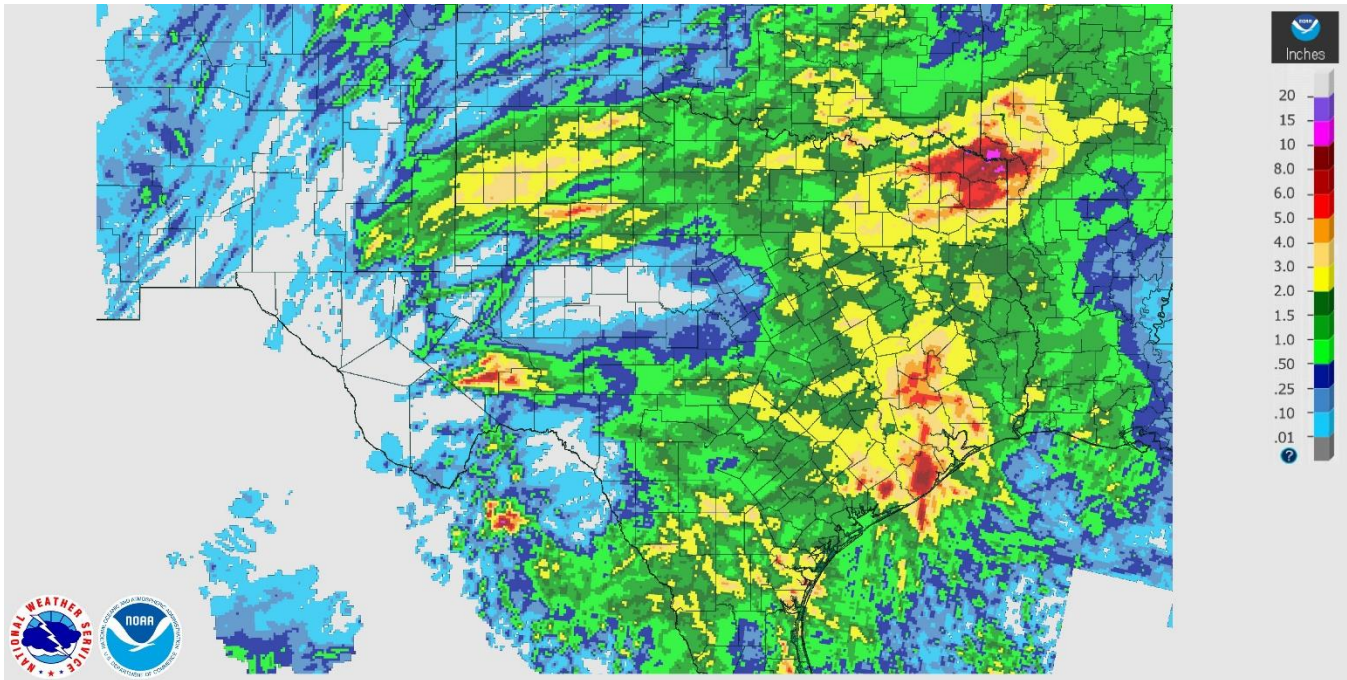
District	Subsoil Moisture Condition by District				Topsoil Moisture Condition by District				Days Suitable for Fieldwork
	Percentage of Acreage				Percentage of Acreage				
	Very Short	Short	Adequate	Surplus	Very Short	Short	Adequate	Surplus	
11	17	30	53	0	11	31	57	1	5.6
12	26	65	6	3	20	47	28	5	6.2
21	34	47	15	4	34	45	17	4	5.5
22	15	67	18	0	16	56	28	0	5.0
30	56	34	10	0	44	29	27	0	5.7
40	41	40	19	0	33	40	27	0	5.3
51	21	54	25	0	19	43	38	0	5.8
52	17	46	36	1	13	41	37	9	5.5
60	6	10	76	8	6	10	76	8	6.0
70	29	31	36	4	28	33	35	4	6.7
81	21	52	27	0	12	49	39	0	5.0
82	0	16	80	4	0	4	82	14	3.6
90	36	26	35	3	7	45	38	10	4.4
96	25	32	42	1	6	35	58	1	5.1
97	24	71	5	0	76	21	3	0	6.7
State	26	46	27	1	21	39	37	3	5.6

Texas Agricultural Districts

- 11 Northern High Plains
- 12 Southern High Plains
- 21 Northern Low Plains
- 22 Southern Low Plains
- 30 Cross Timbers
- 40 Blacklands
- 51 North East
- 52 South East
- 60 Trans-Pecos
- 70 Edwards Plateau
- 81 South Central
- 82 Coastal Bend
- 90 Upper Coast
- 96 South
- 97 Lower Valley

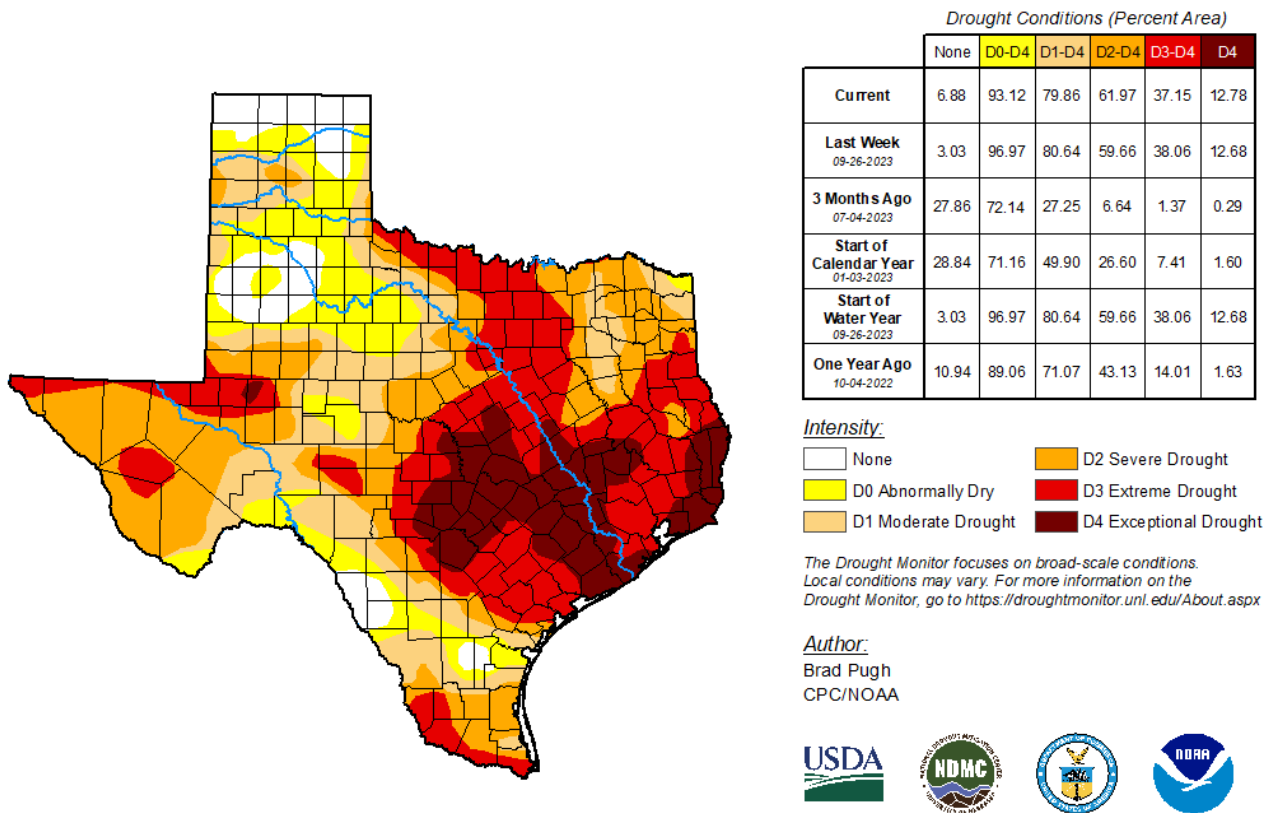


Seven Day Observed Regional Precipitation, October 8, 2023.



Source: National Weather Service, www.nws.noaa.gov

Drought Monitor, Map Released: October 5, 2023.



Source: National Drought Mitigation Center, a partnership with USDA, U.S. Department of Commerce/NOAA, <http://droughtmonitor.unl.edu>



droughtmonitor.unl.edu