



Texas Crop Progress and Condition

Southern Plains Regional Field Office
Post Office Box 70 Austin, Texas 78767
(800) 626-3142 · FAX (855) 270-2725 · www.nass.usda.gov/tx

Issue: TX-CW3423

Weekly Summary for September 4 - September 10

Released: September 11, 2023

Hot and dry weather persisted, throughout Texas, while rainfall ranged from none to 1.5 inches. The southeastern part of Texas received almost no rain while some of the northeastern part of Texas received up to 1.5 inches of rain. Drought conditions ranged from none to exceptional drought with areas in the Edwards Plateau and South East Texas being the driest. There was an average of 6.7 days suitable for fieldwork.

Row Crops:

Corn harvest continued across the state with 62 percent harvested. Corn mature reached 73 percent, down 7 points from the previous year. Late planted sorghum struggled with drought stress. Sorghum mature reached 81 percent, down 6 points from the previous year. Cotton continued to struggle due to the extreme heat. Cotton bolls opening reached 41 percent for the state, down 8 points from the previous year. Sunflowers harvest reached 59 percent, down 5 points from the previous year. In the Upper Coast, rice harvest continued after the small delay due to later than normal planting. Rice harvested reached 87 percent, up 2 points from the previous year. In the Blacklands, the lack of rainfall forced producers to roll up straw and stubble for hay. Soybean setting pods reached 93 percent, down 6 points from the previous year, with 63 percent dropping leaves. In South Texas, Peanuts remained under irrigation and in good condition. Peanuts mature reached 20 percent, unchanged from the previous year.

Fruit, Vegetable, and Specialty Crops:

In the Lower Valley, Citrus and sugarcane were irrigated. Despite the extreme heat, Pecans appeared to be doing okay.

Livestock, Range and Pasture:

Range and pasture condition was rated very poor to poor. Grasses have gone dormant due to excessive heat and lack of moisture. Hay resources were being fed to livestock and producers sought hay to purchase. There were concerns reported of a hay shortage in the winter months.

Crop Progress

Stage	Percent of Acreage			
	Current Week	Previous Week	Previous Year	5 Year Average
Corn				
Dented	93	86	93	94
Mature	73	69	80	73
Harvested	62	56	63	61
Cotton				
Setting Bolls	98	92	99	98
Bolls Opening	41	33	49	39
Harvested	19	16	16	14
Peanuts				
Mature	20	12	20	18
Rice				
Harvested	87	80	85	88
Sorghum				
Coloring	93	89	98	93
Mature	81	77	87	81
Harvested	71	67	73	72
Soybeans				
Setting Pods	93	89	99	93
Dropping Leaves	63	52	77	64
Sunflowers				
Harvested	59	55	64	59
Winter Wheat				
Planted	7	(NA)	15	7

(NA) Not available.

Crop Condition

Crop	Percent of Acreage					Index ¹	
	Excellent	Good	Fair	Poor	Very Poor	2023	2022
Corn	12	37	27	15	9	67	42
Cotton	1	8	30	33	28	36	42
Peanuts	2	29	35	22	12	55	65
Rice	8	55	35	2	0	80	79
Sorghum	16	29	22	17	16	62	48
Soybeans	8	26	34	28	4	60	44
Range and Pasture	1	5	22	27	45	28	48

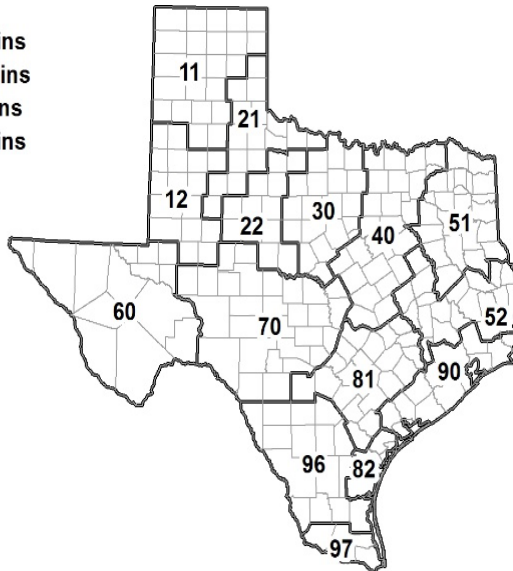
¹ The formula for the condition index is $I = (5V + 25P + 60F + 90G + 110E)/100$ where I = crop condition index and V, P, F, G, E = percentage of crop rated very poor, poor, fair, good, excellent.

Soil Moisture and Days Suitable by District

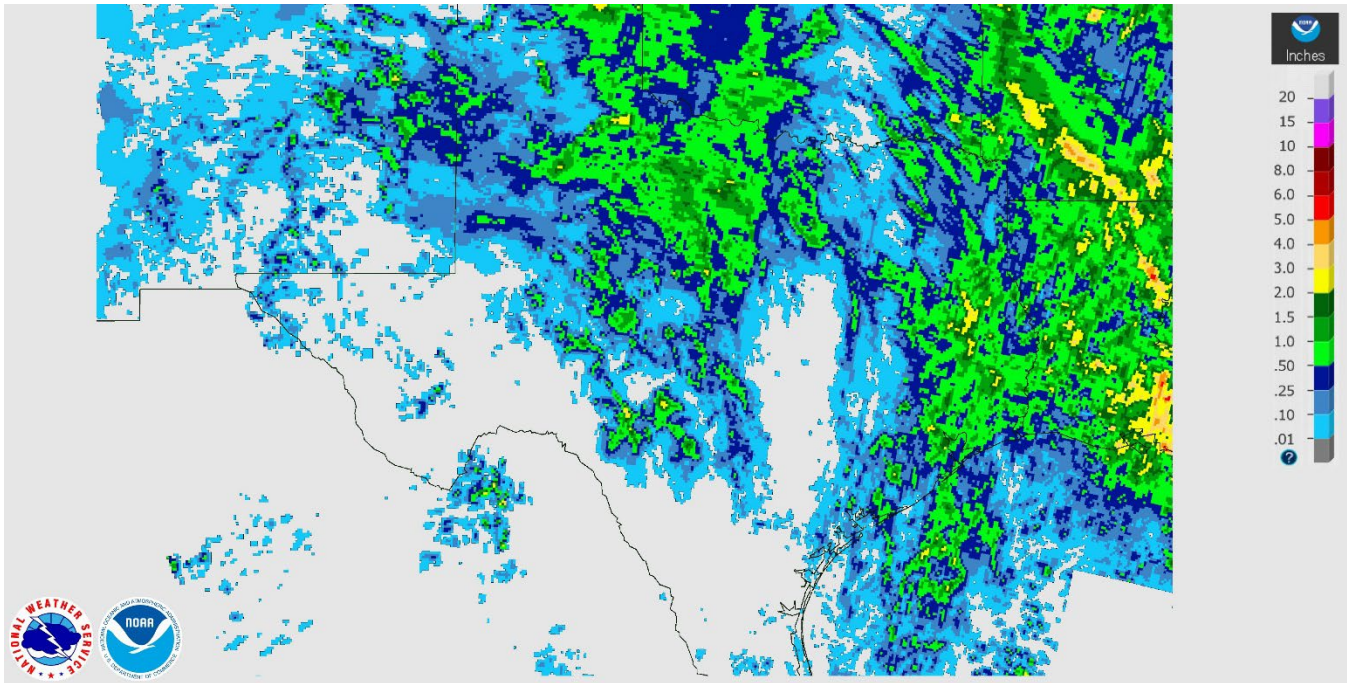
District	Subsoil Moisture Condition by District				Topsoil Moisture Condition by District				Days Suitable for Fieldwork
	Percentage of Acreage				Percentage of Acreage				
	Very Short	Short	Adequate	Surplus	Very Short	Short	Adequate	Surplus	
11	25	32	43	0	41	29	30	0	6.9
12	68	27	5	0	61	33	6	0	6.8
21	62	33	5	0	62	35	3	0	7.0
22	46	54	0	0	51	48	1	0	6.5
30	67	33	0	0	75	25	0	0	6.7
40	67	27	6	0	75	22	3	0	6.1
51	53	38	6	3	55	37	5	3	6.9
52	78	21	1	0	77	22	1	0	6.8
60	17	32	40	11	17	32	40	11	6.6
70	92	8	0	0	92	7	1	0	6.4
81	77	20	3	0	83	14	3	0	6.8
82	21	30	49	0	10	34	56	0	7.0
90	84	15	1	0	90	9	1	0	6.4
96	34	35	30	1	35	38	26	1	6.6
97	23	76	1	0	80	19	1	0	7.0
State	55	31	14	0	61	28	11	0	6.7

Texas Agricultural Districts

- 11 Northern High Plains
- 12 Southern High Plains
- 21 Northern Low Plains
- 22 Southern Low Plains
- 30 Cross Timbers
- 40 Blacklands
- 51 North East
- 52 South East
- 60 Trans-Pecos
- 70 Edwards Plateau
- 81 South Central
- 82 Coastal Bend
- 90 Upper Coast
- 96 South
- 97 Lower Valley

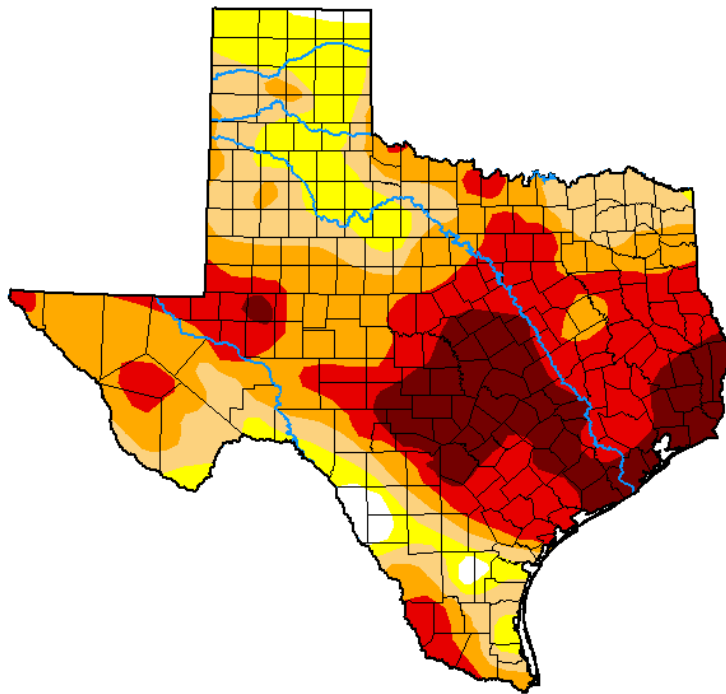


Seven Day Observed Regional Precipitation, September 10, 2023.



Source: National Weather Service, www.nws.noaa.gov

Drought Monitor, September 11, 2023.



Drought Conditions (Percent Area)

	None	D0-D4	D1-D4	D2-D4	D3-D4	D4
Current	1.61	98.39	85.68	66.45	40.53	14.76
Last Week 08-29-2023	1.55	98.45	75.83	61.41	32.33	12.64
3 Months Ago 06-06-2023	41.15	58.85	27.63	10.45	1.79	0.29
Start of Calendar Year 01-03-2023	28.84	71.16	49.90	26.60	7.41	1.60
Start of Water Year 09-27-2022	14.96	85.04	61.36	31.61	8.82	1.06
One Year Ago 09-06-2022	20.57	79.43	62.32	33.57	9.26	0.90

Intensity:

- None
- D0 Abnormally Dry
- D1 Moderate Drought
- D2 Severe Drought
- D3 Extreme Drought
- D4 Exceptional Drought

The Drought Monitor focuses on broad-scale conditions. Local conditions may vary. For more information on the Drought Monitor, go to <https://droughtmonitor.unl.edu/About.aspx>

Author:

Richard Tinker
CPC/NOAA/NWS/NCEP



droughtmonitor.unl.edu

Source: National Drought Mitigation Center, a partnership with USDA, U.S. Department of Commerce/NOAA, <http://droughtmonitor.unl.edu>