



Texas Crop Progress and Condition

Southern Plains Regional Field Office
Post Office Box 70 Austin, Texas 78767
(800) 626-3142 · FAX (855) 270-2725 · www.nass.usda.gov/tx

Issue: TX-CW2923

Weekly Summary for July 31- August 6

Released: August 7, 2023

Hot and dry conditions along with limited rainfall continued throughout the state. There were reports of dropping water levels in ponds throughout Texas. Isolated areas in North East Texas and South East Texas received up to 1.00 inch of rain. Drought conditions ranged from none to exceptional drought with areas in Edwards Plateau being the driest. There was an average of 6.8 days suitable for fieldwork.

Row Crops: Many producers report good grain yields on early planted corn. Corn dented reached 71 percent, up 8 points from the previous year. Sorghum is reporting average and above average yields. Sorghum mature reached 50 percent, unchanged from the previous year. Cotton growing areas reported lack of moisture is stressing cotton. Cotton setting bolls reached 53 percent for the state, down 8 points from the previous year. Sunflowers harvest reached 40 percent, up 8 points from the previous year. Rice headed reached 94 percent, unchanged from the previous year. In the Blacklands, soybeans were showing high yields. Soybean setting pods reached 60 percent, down 8 points from the previous year. In South Texas, peanuts continued to develop under irrigation. Peanuts pegging reached 65 percent down 4 points from the previous year.

Fruit, Vegetable, and Specialty Crops:

In the Southern High Plains, melons continued to be picked and were doing well despite the heat. Some pecan trees were stressed and dropping immature pecans.

Livestock, Range and Pasture:

Range and pasture condition was rated very poor to poor. Rangeland grasses were stressed due to continuous hot days and nights. Supplemental feeding was needed in areas where pastures were low on forage. In the Southern Low Plains livestock numbers were declining as producers began liquidating herds again.

Crop Progress

Stage	Percent of Acreage			
	Current Week	Previous Week	Previous Year	5 Year Average
Corn				
Silked	92	89	94	95
Dough	78	73	72	79
Dented	71	62	63	65
Mature	53	34	52	46
Harvested	18	10	15	12
Cotton				
Squaring	90	80	93	91
Setting Bolls	53	35	61	55
Peanuts				
Pegging	65	60	69	70
Rice				
Headed	94	88	94	94
Harvested	23	9	23	21
Sorghum				
Headed	88	85	89	86
Coloring	70	67	70	71
Mature	50	45	50	58
Harvested	35	(NA)	39	41
Soybeans				
Blooming	85	80	87	87
Setting Pods	60	53	68	67
Dropping Leaves	15	(NA)	18	14
Sunflowers				
Harvested	40	37	32	37

(NA) Not available.

Crop Condition

Crop	Percent of Acreage					Index ¹	
	Excellent	Good	Fair	Poor	Very Poor	2023	2022
Corn	13	49	28	7	3	77	44
Cotton	3	14	28	33	22	42	42
Peanuts	2	43	47	8	0	71	64
Rice	10	65	20	5	0	83	76
Sorghum	22	34	21	14	9	71	42
Soybeans	23	27	25	24	1	71	53
Range and Pasture	2	12	22	30	34	35	16

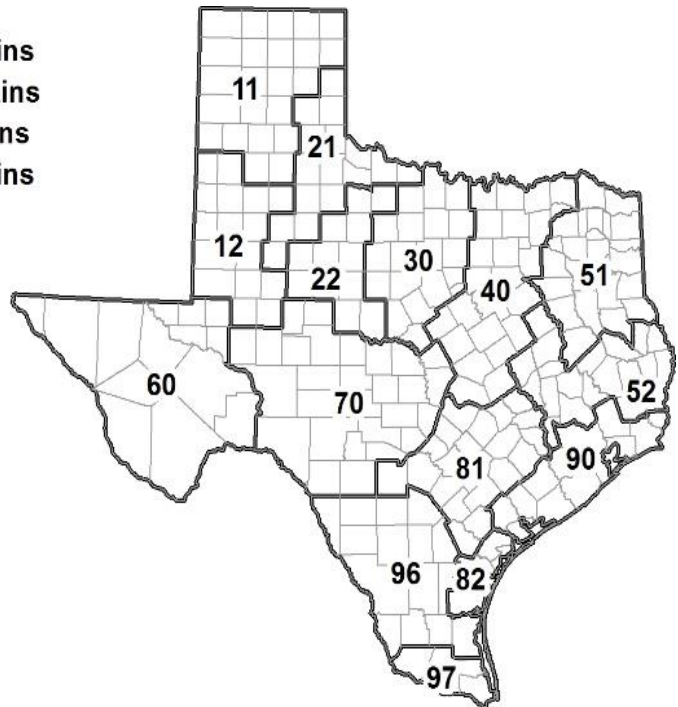
¹ The formula for the condition index is $I = (5V + 25P + 60F + 90G + 110E)/100$ where I = crop condition index and V, P, F, G, E = percentage of crop rated very poor, poor, fair, good, excellent.

Soil Moisture and Days Suitable by District

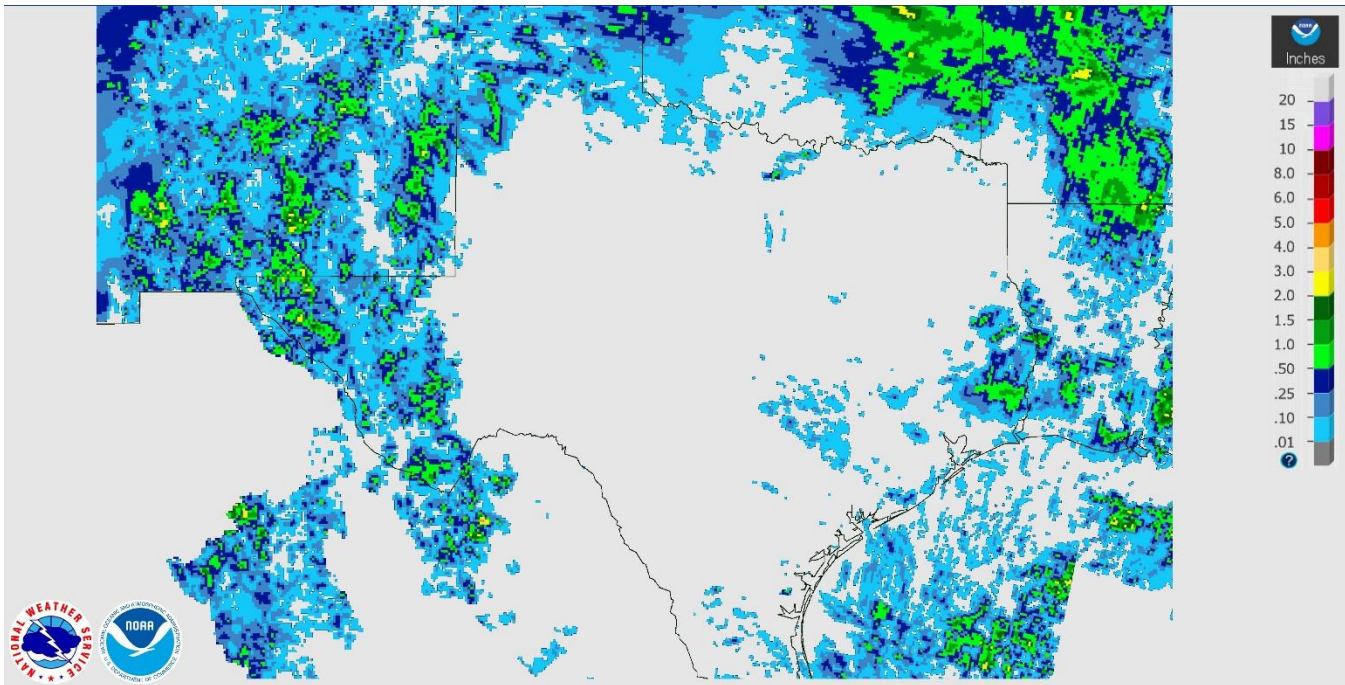
District	Subsoil Moisture Condition by District				Topsoil Moisture Condition by District				Days Suitable for Fieldwork
	Percentage of Acreage				Percentage of Acreage				
	Very Short	Short	Adequate	Surplus	Very Short	Short	Adequate	Surplus	
11	13	33	54	0	17	44	39	0	6.9
12	93	7	0	0	88	12	0	0	7.0
21	32	52	16	0	38	55	7	0	6.9
22	46	40	14	0	59	41	0	0	6.7
30	50	47	3	0	75	24	1	0	5.9
40	63	26	11	0	76	17	7	0	6.9
51	20	42	36	2	30	41	27	2	6.9
52	51	45	4	0	58	40	2	0	6.6
60	53	30	13	4	57	27	12	4	6.4
70	57	39	4	0	85	15	0	0	6.5
81	50	39	11	0	58	33	9	0	6.7
82	62	30	8	0	82	14	4	0	7.0
90	55	33	12	0	67	21	12	0	6.8
96	54	36	10	0	55	41	4	0	6.5
97	18	64	18	0	47	50	3	0	7.0
State	49	32	19	0	58	30	12	0	6.8

Texas Agricultural Districts

- 11 Northern High Plains
- 12 Southern High Plains
- 21 Northern Low Plains
- 22 Southern Low Plains
- 30 Cross Timbers
- 40 Blacklands
- 51 North East
- 52 South East
- 60 Trans-Pecos
- 70 Edwards Plateau
- 81 South Central
- 82 Coastal Bend
- 90 Upper Coast
- 96 South
- 97 Lower Valley

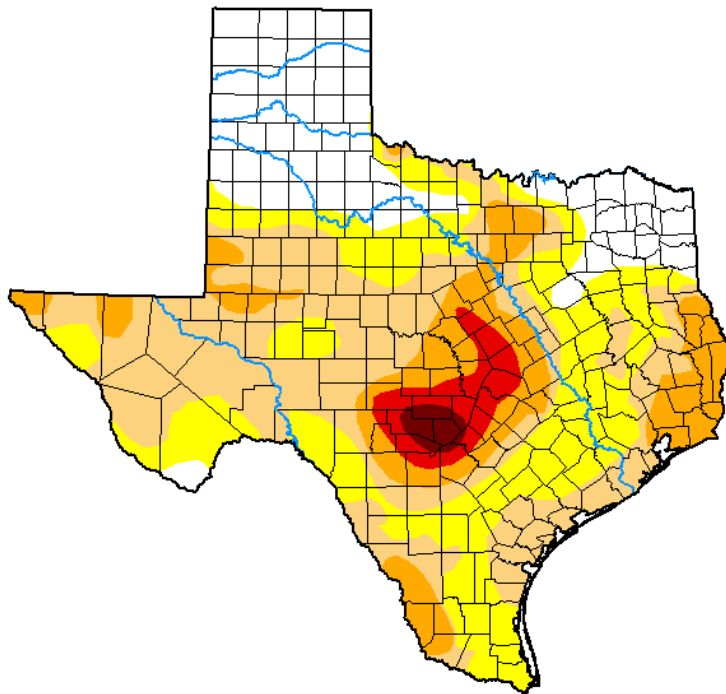


Seven Day Observed Regional Precipitation, August 06, 2023.



Source: National Weather Service, www.nws.noaa.gov

Drought Monitor, August 7, 2023.



Drought Conditions (Percent Area)

	None	D0-D4	D1-D4	D2-D4	D3-D4	D4
Current	21.20	78.80	52.09	19.26	4.81	1.06
Last Week 07-25-2023	21.67	78.33	48.61	18.01	4.81	1.06
3 Months Ago 05-02-2023	31.81	68.19	53.66	37.73	20.66	3.37
Start of Calendar Year 01-03-2023	28.84	71.16	49.90	26.60	7.41	1.60
Start of Water Year 09-27-2022	14.96	85.04	61.36	31.61	8.82	1.06
One Year Ago 08-02-2022	0.82	99.18	97.11	87.92	61.86	21.31

Intensity:

- None
- D0 Abnormally Dry
- D1 Moderate Drought
- D2 Severe Drought
- D3 Extreme Drought
- D4 Exceptional Drought

The Drought Monitor focuses on broad-scale conditions. Local conditions may vary. For more information on the Drought Monitor, go to <https://droughtmonitor.unl.edu/About.aspx>

Author:

Brian Fuchs
National Drought Mitigation Center



droughtmonitor.unl.edu

Source: National Drought Mitigation Center, a partnership with USDA, U.S. Department of Commerce/NOAA, <http://droughtmonitor.unl.edu>