



Texas Crop Progress and Condition

Southern Plains Regional Field Office
Post Office Box 70 Austin, Texas 78767
(800) 626-3142 · FAX (855) 270-2725 · www.nass.usda.gov/tx

Issue: TX-CW2523

Weekly Summary for July 3 - July 9

Released: July 10, 2023

Most of the state received from trace amounts to 2.00 inches of precipitation. Isolated areas in North East Texas and South Texas received up to 7.00 inches. Drought conditions ranged from none to exceptionally dry with areas in the Edwards Plateau being the driest. There was an average of 6.1 days suitable for fieldwork.

Small Grains: Wheat harvest was complete in the Cross Timbers. Winter wheat harvested reached 93 percent, down 4 points from the previous year. Oats harvested reached 95 percent, down 3 points from the previous year.

Row Crops: In the Southern High Plains and the Blacklands, corn and sorghum were maturing quickly. In the Upper Coast, the Coastal Bend and the Lower Valley, corn and sorghum harvest continued. Corn dough reached 57 percent, up 5 points from the previous year. Sorghum headed reached 70 percent, up 2 points from the previous year. In the Northern High Plains, cotton progress varied throughout the area from emerging to squaring with insects being a major concern. Cotton squaring reached 46 percent for the state, up 2 points from the previous year. Sunflowers planted reached 93 percent, down 5 points from the previous year. Rice headed reached 63 percent, up 9 points from the previous year. Soybean blooming reached 46 percent, down 19 points from the previous year. Feral hog damage remained an issue in North East Texas.

Fruit, Vegetable, and Specialty Crops: In South Texas, watermelon and cantaloupe harvest continued. In the Low Valley, citrus and sugarcane were being irrigated.

Livestock, Range and Pasture: Supplemental feeding of livestock decreased in the Northern Low Plains and South Texas. Hay harvest continued in most areas of the state. Cattle prices remained high in most of the livestock districts. Grasshoppers infested hay meadows in most of the state and insects including fly, mosquito and tick increased on livestock in the Blacklands. Range and pasture condition was rated fair to poor.

Crop Progress

Stage	Percent of Acreage			
	Current Week	Previous Week	Previous Year	5 Year Average
Corn				
Silked	75	73	73	74
Dough	57	45	52	54
Dented	15	(NA)	32	22
Cotton				
Squaring	46	36	44	46
Setting Bolls	18	13	19	16
Peanuts				
Pegging	13	10	12	14
Rice				
Headed	63	46	54	64
Sorghum				
Headed	70	64	68	68
Coloring	50	40	49	50
Soybeans				
Emerged	93	90	(NA)	(NA)
Blooming	46	41	65	63
Setting Pods	7	(NA)	16	(NA)
Sunflowers				
Planted	93	90	98	93
Harvested	11	9	14	15
Winter Wheat				
Harvested	93	86	97	94
Oats				
Harvested	95	90	98	96

(NA) Not available.

Crop Condition

Crop	Percent of Acreage					Index ¹	
	Excellent	Good	Fair	Poor	Very Poor	2023	2022
Corn	13	51	26	7	3	78	51
Cotton	5	28	27	25	15	54	48
Peanuts	5	43	42	6	4	71	63
Rice	7	70	20	3	0	83	69
Sorghum	16	43	30	8	3	76	44
Soybeans	20	36	31	10	3	76	63
Wheat	9	30	29	21	11	60	(NA)
Oats	2	26	45	8	19	56	51
Range and Pasture	4	23	29	28	16	50	76

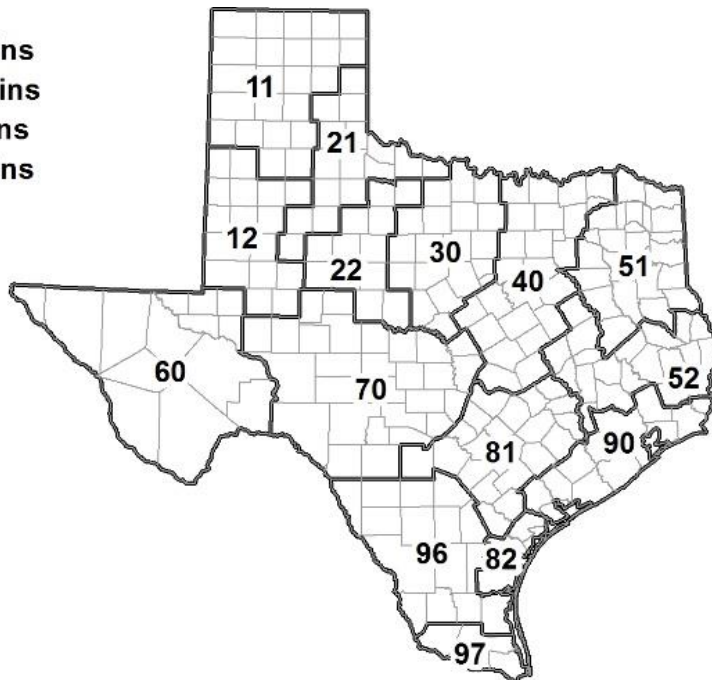
¹ The formula for the condition index is $I = (5V + 25P + 60F + 90G + 110E)/100$ where I = crop condition index and V, P, F, G, E = percentage of crop rated very poor, poor, fair, good, excellent.

Soil Moisture and Days Suitable by District

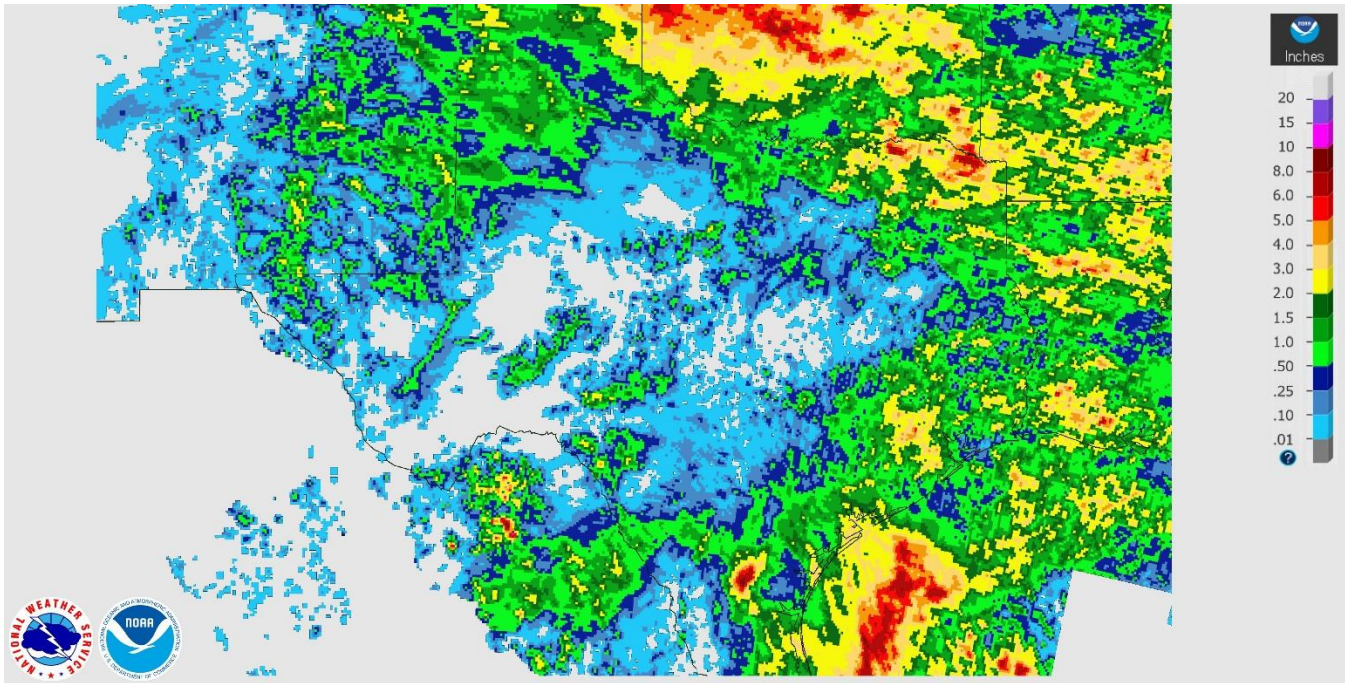
District	Subsoil Moisture Condition by District				Topsoil Moisture Condition by District				Days Suitable for Fieldwork
	Percentage of Acreage				Percentage of Acreage				
	Very Short	Short	Adequate	Surplus	Very Short	Short	Adequate	Surplus	
11	6	23	65	6	6	29	54	11	5.3
12	63	37	0	0	45	45	10	0	7.0
21	26	26	47	1	25	28	46	1	6.8
22	0	23	77	0	0	41	59	0	6.1
30	5	56	39	0	9	60	31	0	6.5
40	20	38	36	6	34	33	27	6	5.9
51	4	41	47	8	4	42	48	6	6.7
52	10	54	36	0	16	41	43	0	6.8
60	47	40	9	4	38	49	9	4	6.5
70	29	35	36	0	30	51	19	0	6.3
81	6	44	46	4	6	53	41	0	6.4
82	42	30	28	0	52	20	28	0	4.8
90	4	49	46	1	10	59	30	1	4.2
96	25	39	33	3	26	41	33	0	5.9
97	13	45	39	3	13	67	18	2	6.3
State	22	35	40	3	21	41	35	3	6.1

Texas Agricultural Districts

- 11 Northern High Plains
- 12 Southern High Plains
- 21 Northern Low Plains
- 22 Southern Low Plains
- 30 Cross Timbers
- 40 Blacklands
- 51 North East
- 52 South East
- 60 Trans-Pecos
- 70 Edwards Plateau
- 81 South Central
- 82 Coastal Bend
- 90 Upper Coast
- 96 South
- 97 Lower Valley

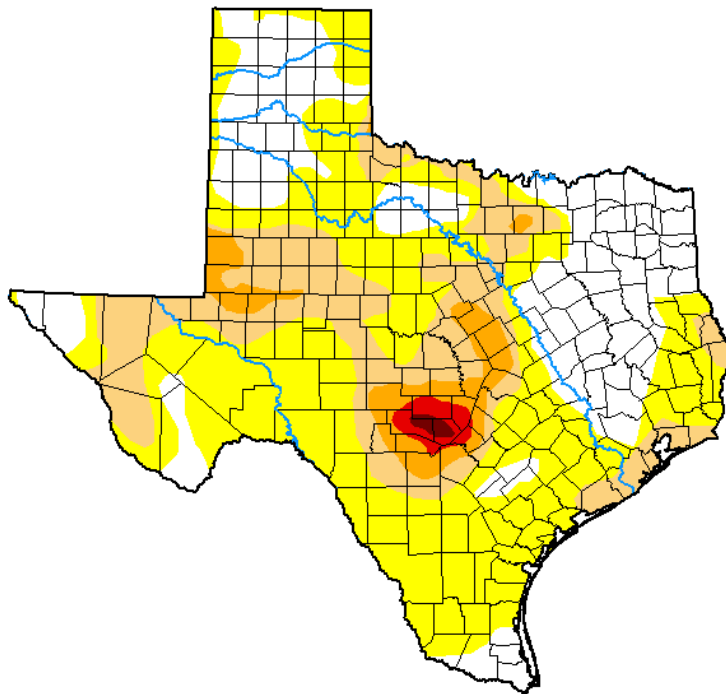


Seven Day Observed Regional Precipitation, July 9, 2023.



Source: National Weather Service, www.nws.noaa.gov

Drought Monitor, Valid July 4, 2023.



Drought Conditions (Percent Area)

	None	D0-D4	D1-D4	D2-D4	D3-D4	D4
Current	27.86	72.14	27.25	6.64	1.37	0.29
Last Week 06-27-2023	30.71	69.29	24.38	6.05	1.37	0.29
3 Months Ago 04-04-2023	19.10	80.90	66.89	45.25	18.98	4.19
Start of Calendar Year 01-03-2023	28.84	71.16	49.90	26.60	7.41	1.60
Start of Water Year 09-27-2022	14.96	85.04	61.36	31.61	8.82	1.06
One Year Ago 07-05-2022	2.47	97.53	86.79	66.05	45.91	16.11

Intensity:

- None
- D0 Abnormally Dry
- D1 Moderate Drought
- D2 Severe Drought
- D3 Extreme Drought
- D4 Exceptional Drought

The Drought Monitor focuses on broad-scale conditions. Local conditions may vary. For more information on the Drought Monitor, go to <https://droughtmonitor.unl.edu/About.aspx>

Author:

Curtis Riganti
National Drought Mitigation Center



droughtmonitor.unl.edu

Source: National Drought Mitigation Center, a partnership with USDA, U.S. Department of Commerce/NOAA, <http://droughtmonitor.unl.edu>

Texas Crop Progress and Condition (July 2023)

USDA, National Agricultural Statistics Service, Southern Plains Regional Field Office