



Texas Crop Progress and Condition

Southern Plains Regional Field Office
Post Office Box 70 Austin, Texas 78767
(800) 626-3142 · FAX (855) 270-2725 · www.nass.usda.gov/tx

Issue: TX-CW4522

Weekly Summary for November 14 - November 20

Released: November 21, 2022

Much of the state received from trace amounts up to 2 inches of precipitation this week with areas of East Texas, the Upper Coast, the Blacklands and the Coastal Bend receiving as much as 3 inches. Drought conditions ranged from none to exceptionally dry, with isolated parts of South Central Texas, the Plains being the driest. There was an average of 5.5 days suitable for fieldwork, down from 5.9 days the previous week.

Small Grains: Winter wheat emergence and planting continues across the state. Recent rain has helped some areas in the state with oats and wheat development. Winter wheat planted reached 95 percent, up 3 points from the previous year. Winter wheat emerged reached 80 percent, up 6 points from the previous year. Oats planted reached 95 percent, up 3 points from the previous week, and up 6 points from the previous year. Oats emerged reached 80 percent, up 5 points from the previous week, and up 6 points from the previous year.

Row Crops: Cotton harvest is complete across much of the state with some fields in the Plains wrapping up in the coming weeks. Cotton conditions were rated 70 percent very poor to poor. Cotton harvest is currently at 71 percent, 2 points above previous year, and 7 points above normal. Peanut harvest continued to progress statewide. Peanuts mature reached 91 percent, up 7 points from the previous year and up 9 points from normal. Peanuts harvested reached 79 percent, up 2 points from the previous year and up 1 point from normal. Soybeans are pretty much complete across the state.

Livestock, Range and Pasture: Supplemental feeding continued. Range and pasture conditions were rated 58 percent poor to very poor.

Crop Progress

Stage	Percent of Acreage			
	Current Week	Previous Week	Previous Year	5 Year Average
Cotton				
Harvested	71	61	69	64
Peanuts				
Mature	91	85	84	82
Harvested	79	70	77	78
Winter Wheat				
Planted	95	93	92	89
Emerged	80	75	74	75
Oats				
Planted	95	90	95	95
Emerged	80	72	83	81

Crop Condition

Crop	Percent of Acreage					Index ¹	
	Excellent	Good	Fair	Poor	Very Poor	2022	2021
Cotton	3	14	31	23	29	42	78
Peanuts	4	26	51	15	4	62	86
Wheat	3	16	32	26	23	45	49
Oats	4	16	28	24	28	43	53
Range and Pasture	3	11	28	30	28	39	54

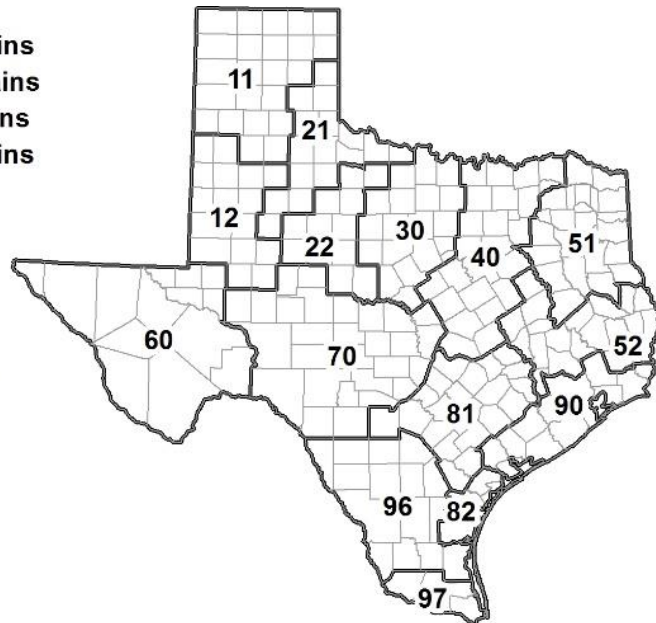
¹ The formula for the condition index is $I = (5V + 25P + 60F + 90G + 110E)/100$ where I = crop condition index and V, P, F, G, E = percentage of crop rated very poor, poor, fair, good, excellent.

Soil Moisture and Days Suitable by District

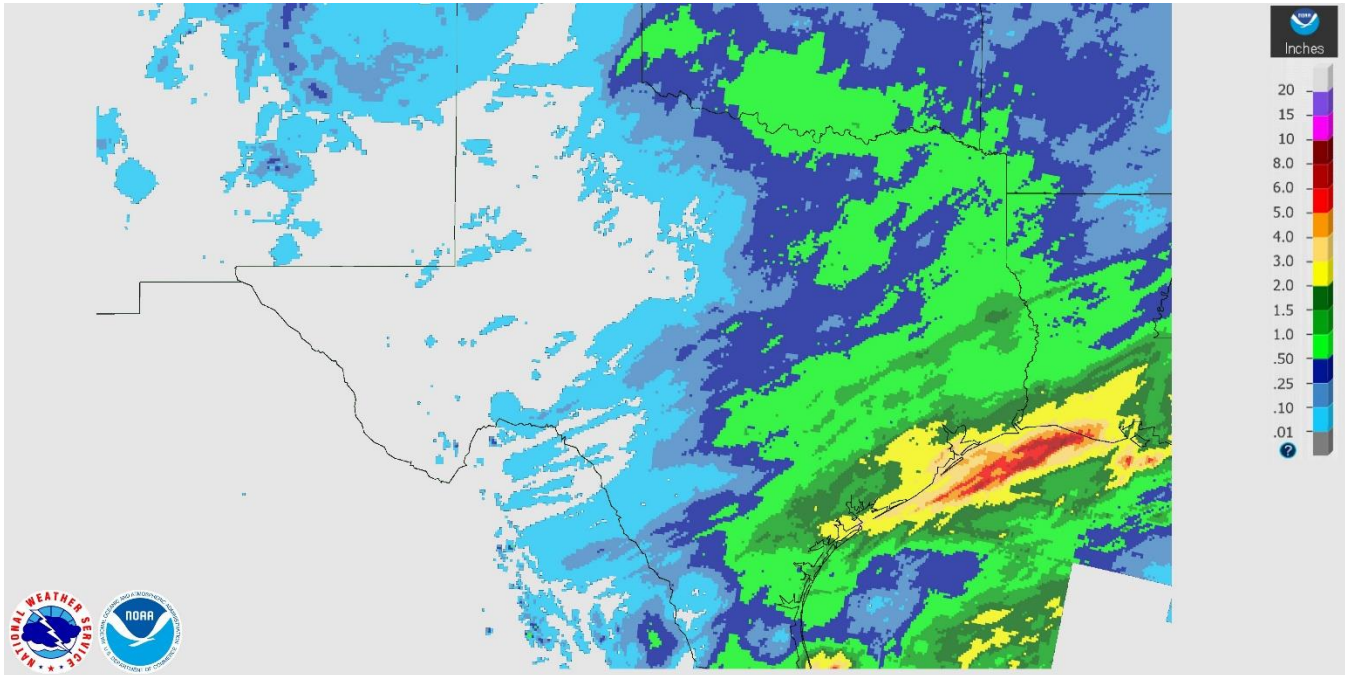
District	Subsoil Moisture Condition by District				Topsoil Moisture Condition by District				Days Suitable for Fieldwork
	Percentage of Acreage				Percentage of Acreage				
	Very Short	Short	Adequate	Surplus	Very Short	Short	Adequate	Surplus	
11	45	42	13	0	26	59	15	0	6.7
12	65	34	1	0	51	40	9	0	5.5
21	24	50	25	1	14	60	26	0	7.0
22	81	19	0	0	31	41	28	0	6.2
30	22	56	22	0	14	60	26	0	6.0
40	16	42	41	1	11	24	62	3	3.3
51	10	47	40	3	11	40	46	3	6.4
52	17	36	46	1	12	32	54	2	5.4
60	6	41	38	15	6	38	41	15	6.5
70	38	50	12	0	16	49	35	0	7.0
81	46	18	35	1	40	21	39	0	5.6
82	18	0	62	20	18	1	61	20	4.7
90	37	12	36	15	0	36	44	20	1.5
96	27	37	35	1	23	41	36	0	6.4
97	11	24	65	0	5	36	56	3	2.5
State	40	36	22	2	25	42	31	2	5.5

Texas Agricultural Districts

- 11 Northern High Plains
- 12 Southern High Plains
- 21 Northern Low Plains
- 22 Southern Low Plains
- 30 Cross Timbers
- 40 Blacklands
- 51 North East
- 52 South East
- 60 Trans-Pecos
- 70 Edwards Plateau
- 81 South Central
- 82 Coastal Bend
- 90 Upper Coast
- 96 South
- 97 Lower Valley

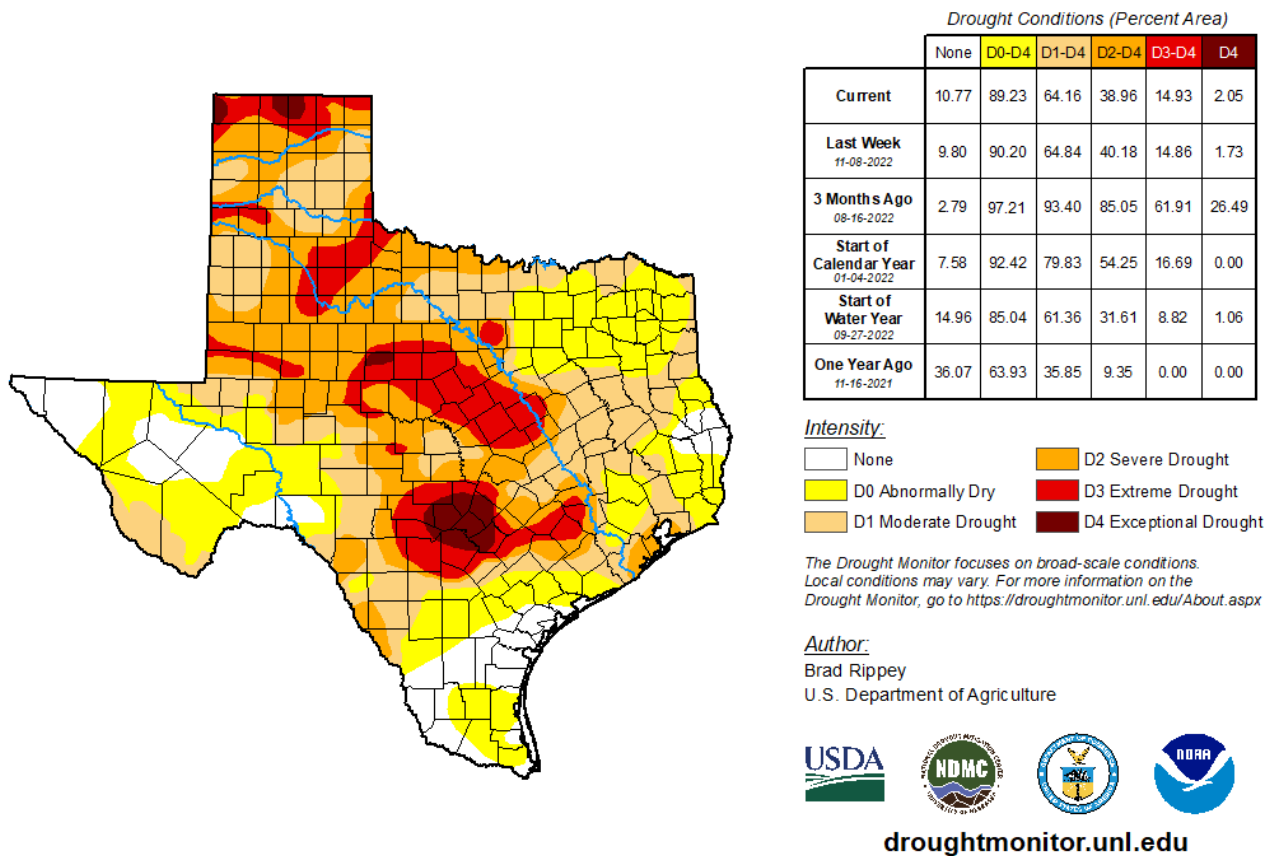


Seven Day Observed Regional Precipitation, November 20, 2022.



Source: National Weather Service, www.nws.noaa.gov

Drought Monitor, Valid November 15, 2022.



Source: National Drought Mitigation Center, a partnership with USDA, U.S. Department of Commerce/NOAA, <http://droughtmonitor.unl.edu>