



# Texas Crop Progress and Condition

Southern Plains Regional Field Office  
Post Office Box 70 Austin, Texas 78767  
(800) 626-3142 · FAX (855) 270-2725 · www.nass.usda.gov/tx

Issue: TX-CW4222

Weekly Summary for October 24 - October 30

Released: October 31, 2022

Most of the state received from trace amounts up to 3 inches of precipitation this week with areas of the Cross Timbers, the Blacklands, and the Coastal Bend receiving as much as 8 inches. Drought conditions ranged from none to exceptionally dry, with isolated parts of South Central Texas, the Plains, and the Blacklands being the driest. There was an average of 4.9 days suitable for fieldwork, down from 6.1 days the previous week.

**Small Grains:** Winter wheat and oat planting continued across the state. The rain has improved the fields, but more moisture is needed. Winter wheat planted reached 84 percent, up 6 points from the previous year. Winter wheat emerged reached 59 percent, up 4 points from the previous year. Oats planted reached 74 percent, up 9 points from the previous week, but down 9 from the previous year.

**Row Crops:** Cotton harvest progress slowed due to the rain across much of the state, cotton conditions were rated 70 percent very poor to poor. Cotton harvest is currently at 48 percent, 4 points above previous year, and 5 points above normal. Peanut and soybean harvest continued to progress statewide. Soybeans harvested reached 80 percent, down 9 points from the previous year and down 4 points from normal. Peanuts harvested reached 55 percent, up 10 points from the previous year.

**Livestock, Range and Pasture:** Supplemental feeding continued. Range and pasture conditions were rated 86 percent very poor to fair.

## Crop Progress

Stage	Percent of Acreage			
	Current Week	Previous Week	Previous Year	5 Year Average
<b>Corn</b>				
Harvested	97	93	97	90
<b>Cotton</b>				
Bolls Opening	95	88	92	92
Harvested	48	41	44	43
<b>Peanuts</b>				
Mature	75	65	66	61
Harvested	55	42	45	43
<b>Soybeans</b>				
Harvested	80	72	89	84
<b>Sunflowers</b>				
Harvested	94	90	88	81
<b>Winter Wheat</b>				
Planted	84	75	78	75
Emerged	55	45	55	56
<b>Oats</b>				
Planted	74	65	83	82
Emerged	46	40	51	57

### Crop Condition

Crop	Percent of Acreage					Index <sup>1</sup>	
	Excellent	Good	Fair	Poor	Very Poor	2022	2021
Corn	3	14	31	23	29	42	78
Cotton	3	10	17	30	40	32	79
Peanuts	4	26	51	15	4	62	81
Soybeans	1	12	24	28	35	35	72
Wheat	0	4	31	23	42	30	46
Range and Pasture	3	11	29	28	29	39	-

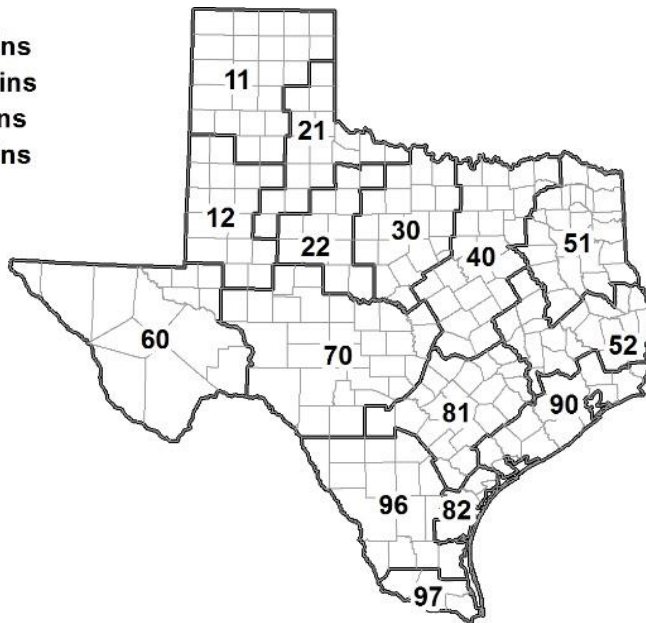
<sup>1</sup> The formula for the condition index is  $I = (5V + 25P + 60F + 90G + 110E)/100$  where I = crop condition index and V, P, F, G, E = percentage of crop rated very poor, poor, fair, good, excellent.

### Soil Moisture and Days Suitable by District

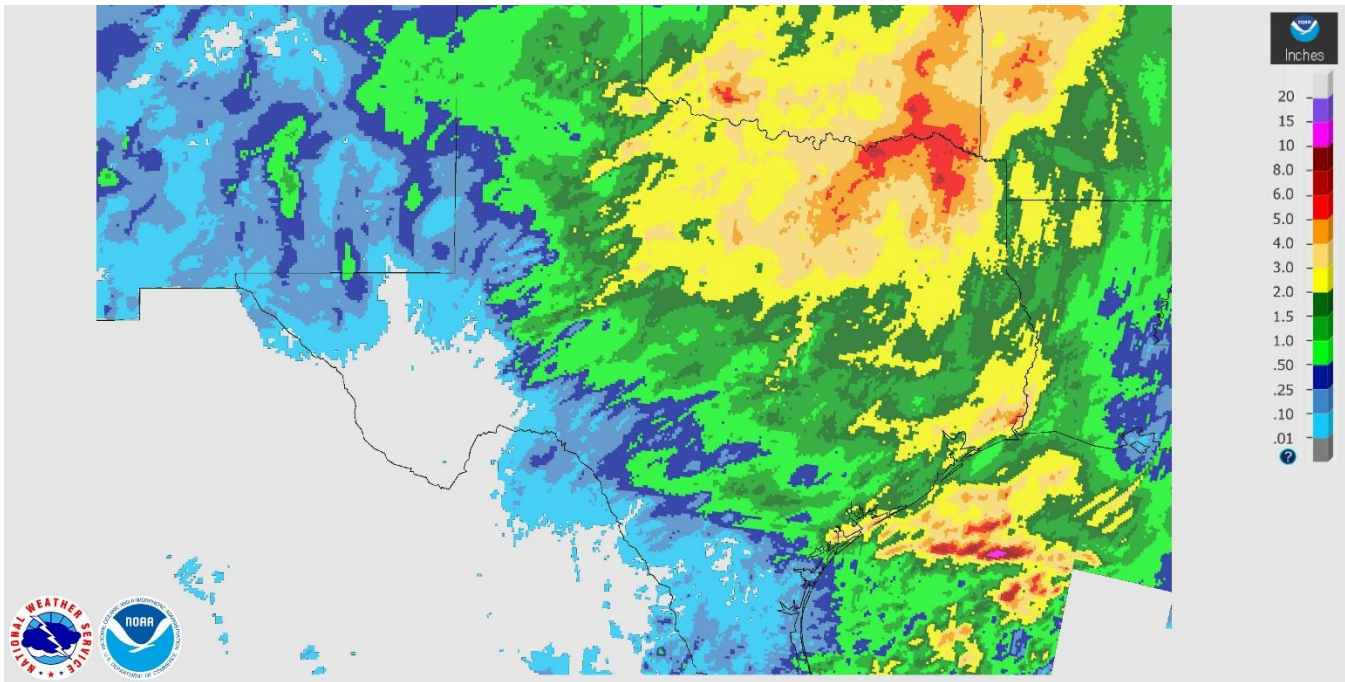
District	Subsoil Moisture Condition by District				Topsoil Moisture Condition by District				Days Suitable for Fieldwork
	Percentage of Acreage				Percentage of Acreage				
	Very Short	Short	Adequate	Surplus	Very Short	Short	Adequate	Surplus	
11	30	66	3	1	55	40	5	0	4.7
12	50	50	0	0	25	50	25	0	4.0
21	53	19	28	0	42	32	23	3	5.8
22	87	13	0	0	56	24	12	8	4.8
30	42	39	19	0	29	42	21	8	5.1
40	38	41	17	4	17	29	44	10	3.5
51	30	34	36	0	24	35	41	0	5.4
52	18	40	19	23	18	41	18	23	6.3
60	1	17	72	10	1	17	72	10	6.2
70	45	49	6	0	24	38	38	0	5.3
81	30	50	20	0	33	41	18	8	5.8
82	20	80	0	0	50	50	0	0	7.0
90	29	43	28	0	30	42	28	0	6.1
96	12	43	44	1	11	43	46	0	7.0
97	5	25	70	0	30	67	3	0	7.0
State	40	45	14	1	35	39	22	4	4.9

### Texas Agricultural Districts

- 11 Northern High Plains
- 12 Southern High Plains
- 21 Northern Low Plains
- 22 Southern Low Plains
- 30 Cross Timbers
- 40 Blacklands
- 51 North East
- 52 South East
- 60 Trans-Pecos
- 70 Edwards Plateau
- 81 South Central
- 82 Coastal Bend
- 90 Upper Coast
- 96 South
- 97 Lower Valley

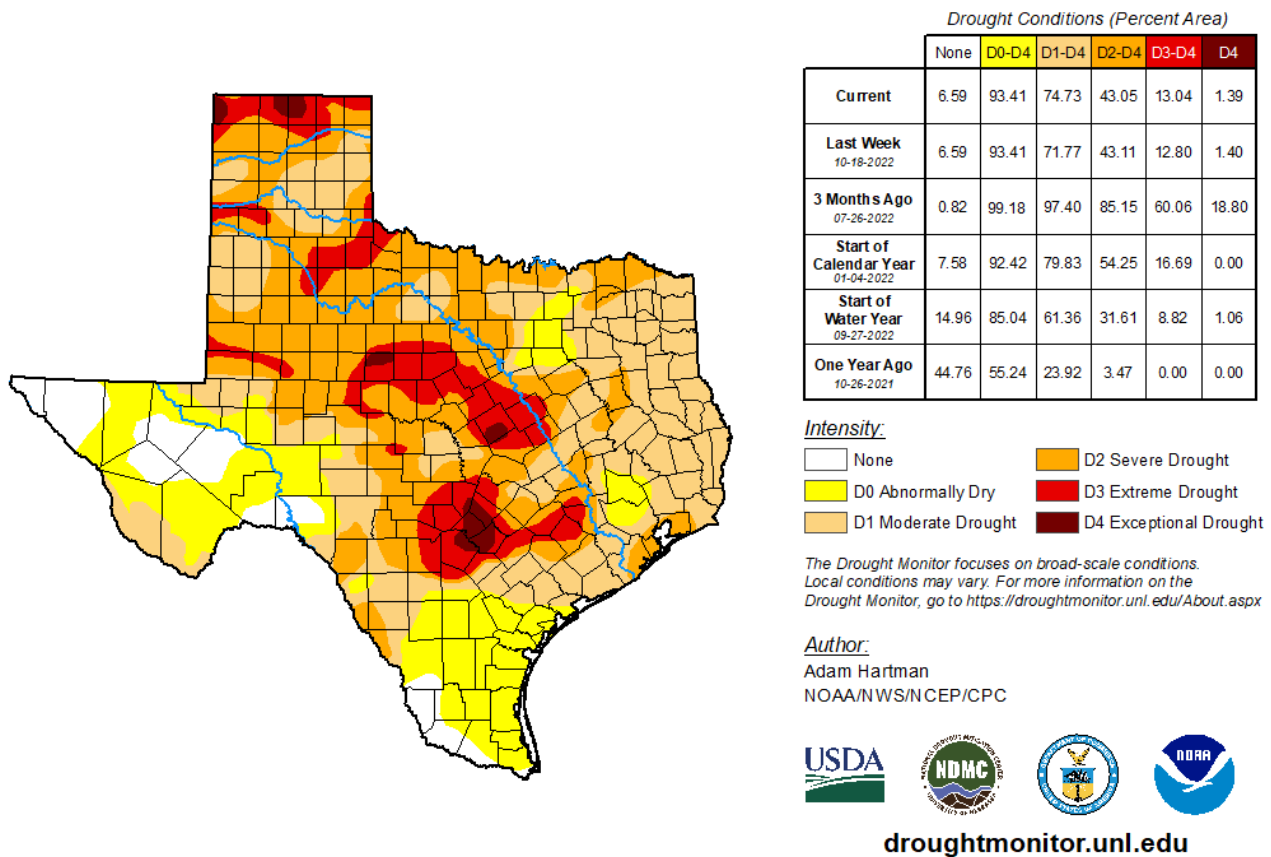


## Seven Day Observed Regional Precipitation, October 30, 2022.



Source: National Weather Service, [www.nws.noaa.gov](http://www.nws.noaa.gov)

## Drought Monitor, Valid October 25, 2022.



Source: National Drought Mitigation Center, a partnership with USDA, U.S. Department of Commerce/NOAA, <http://droughtmonitor.unl.edu>