



Texas Crop Progress and Condition

Southern Plains Regional Field Office
Post Office Box 70 Austin, Texas 78767
(800) 626-3142 · FAX (855) 270-2725 · www.nass.usda.gov/tx

Issue: TX-CW4022

Weekly Summary for October 10- October 16 Released: October 17, 2022

Most of the state received from trace amounts up to 3 inches of precipitation this week with areas of the Cross Timbers, the Blacklands, the Edwards Plateau, South, and South Central Texas receiving little to no rain. Drought conditions ranged from none to exceptionally dry, with isolated parts of South Central Texas, the Plains, and the Blacklands being the driest. There was an average of 6.3 days suitable for fieldwork, down from 6.6 days the previous week.

Small Grains: Winter wheat and oat planting continued across the state. Winter wheat planted reached 70 percent, up 7 points from the previous year and normal. Winter wheat emerged reached 37 percent, down 1 point from the previous year and normal. Oats planted reached 59 percent, up 8 points from the previous week, and unchanged from the previous year.

In the Edwards Plateau, producers were postponing planting small grains in hopes for rain.

Row Crops: Cotton harvest continued to progress across much of the state, with cotton fields in the Southern parts nearing completion. Cotton harvest is currently at 40 percent, 6 points above previous year, and 7 points above normal. In the Plains, there were reports of corn fields being harvested for silage purposes. Peanut and soybean harvest continued to progress statewide.

Livestock, Range and Pasture: Supplemental feeding continued. Range and pasture conditions were rated 60 percent very poor to fair.

Crop Progress

Stage	Percent of Acreage			
	Current Week	Previous Week	Previous Year	5 Year Average
Corn				
Harvested	88	85	90	82
Cotton				
Bolls Opening	85	78	81	82
Harvested	40	35	34	33
Peanuts				
Mature	60	51	55	50
Harvested	25	18	23	19
Sorghum				
Harvested	98	95	91	87
Soybeans				
Harvested	65	55	77	74
Sunflowers				
Harvested	89	85	78	73
Winter Wheat				
Planted	70	58	63	63
Emerged	37	28	38	38
Oats				
Planted	59	51	59	59
Emerged	30	21	26	28

Crop Condition

Crop	Percent of Acreage					Index ¹	
	Excellent	Good	Fair	Poor	Very Poor	2022	2021
Corn	3	14	31	23	29	42	78
Cotton	2	8	19	46	25	34	79
Peanuts	1	30	58	11	0	66	86
Sorghum	1	16	41	29	13	48	-3
Soybeans	1	12	24	28	35	35	-3
Range and Pasture	3	10	29	27	31	38	59

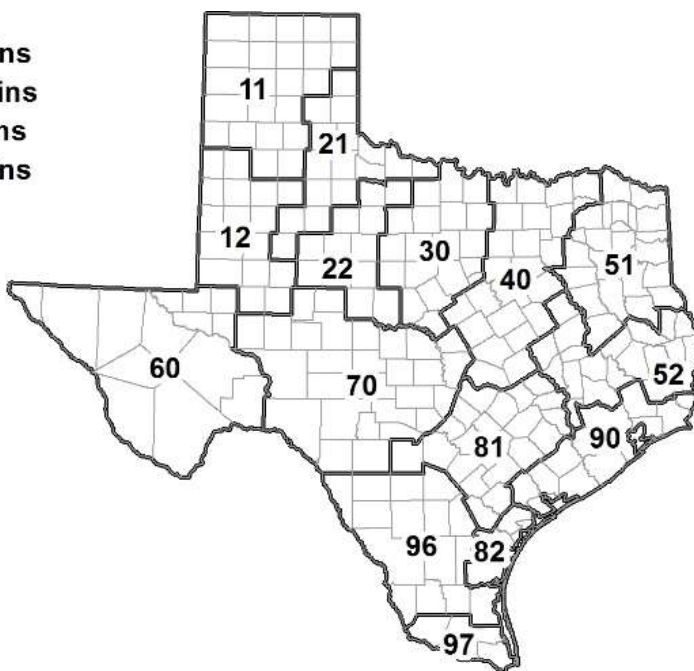
¹ The formula for the condition index is $I = (5V + 25P + 60F + 90G + 110E)/100$ where I = crop condition index and V, P, F, G, E = percentage of crop rated very poor, poor, fair, good, excellent.

Soil Moisture and Days Suitable by District

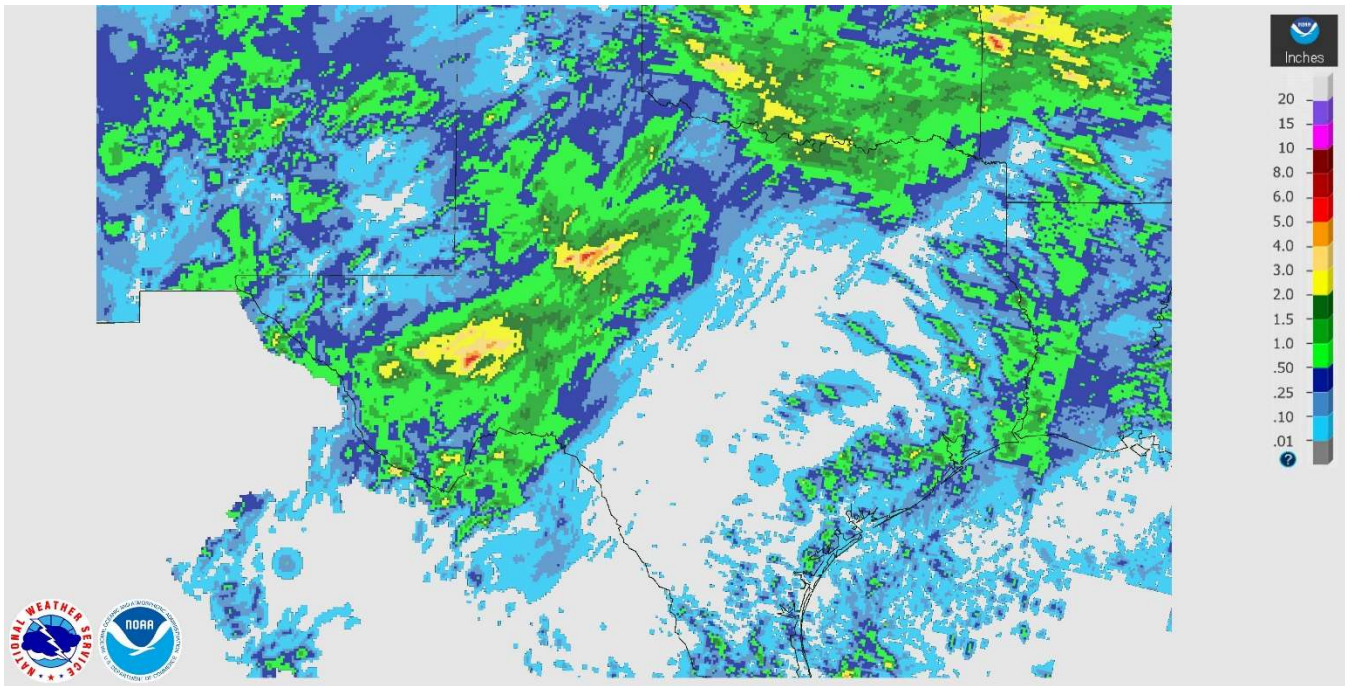
District	Subsoil Moisture Condition by District				Topsoil Moisture Condition by District				Days Suitable for Fieldwork
	Percentage of Acreage				Percentage of Acreage				
	Very Short	Short	Adequate	Surplus	Very Short	Short	Adequate	Surplus	
11	37	47	15	1	45	29	25	1	6.5
12	78	15	6	1	65	24	11	0	5.8
21	50	34	14	2	49	31	15	5	5.7
22	79	12	9	0	81	9	6	4	5.9
30	50	41	9	0	49	41	7	3	6.5
40	46	42	12	0	63	26	11	0	6.8
51	27	54	15	4	23	56	18	3	6.8
52	31	65	4	0	29	62	5	4	6.9
60	6	16	68	10	4	19	68	9	6.2
70	77	22	1	0	79	20	1	0	6.7
81	58	38	4	0	68	28	4	0	6.6
82	0	40	60	0	0	51	47	2	7.0
90	26	28	45	1	32	36	31	1	6.2
96	37	44	18	1	37	44	18	1	6.6
97	6	16	72	6	13	58	29	0	5.4
State	50	33	16	1	53	30	16	1	6.3

Texas Agricultural Districts

- 11 Northern High Plains
- 12 Southern High Plains
- 21 Northern Low Plains
- 22 Southern Low Plains
- 30 Cross Timbers
- 40 Blacklands
- 51 North East
- 52 South East
- 60 Trans-Pecos
- 70 Edwards Plateau
- 81 South Central
- 82 Coastal Bend
- 90 Upper Coast
- 96 South
- 97 Lower Valley

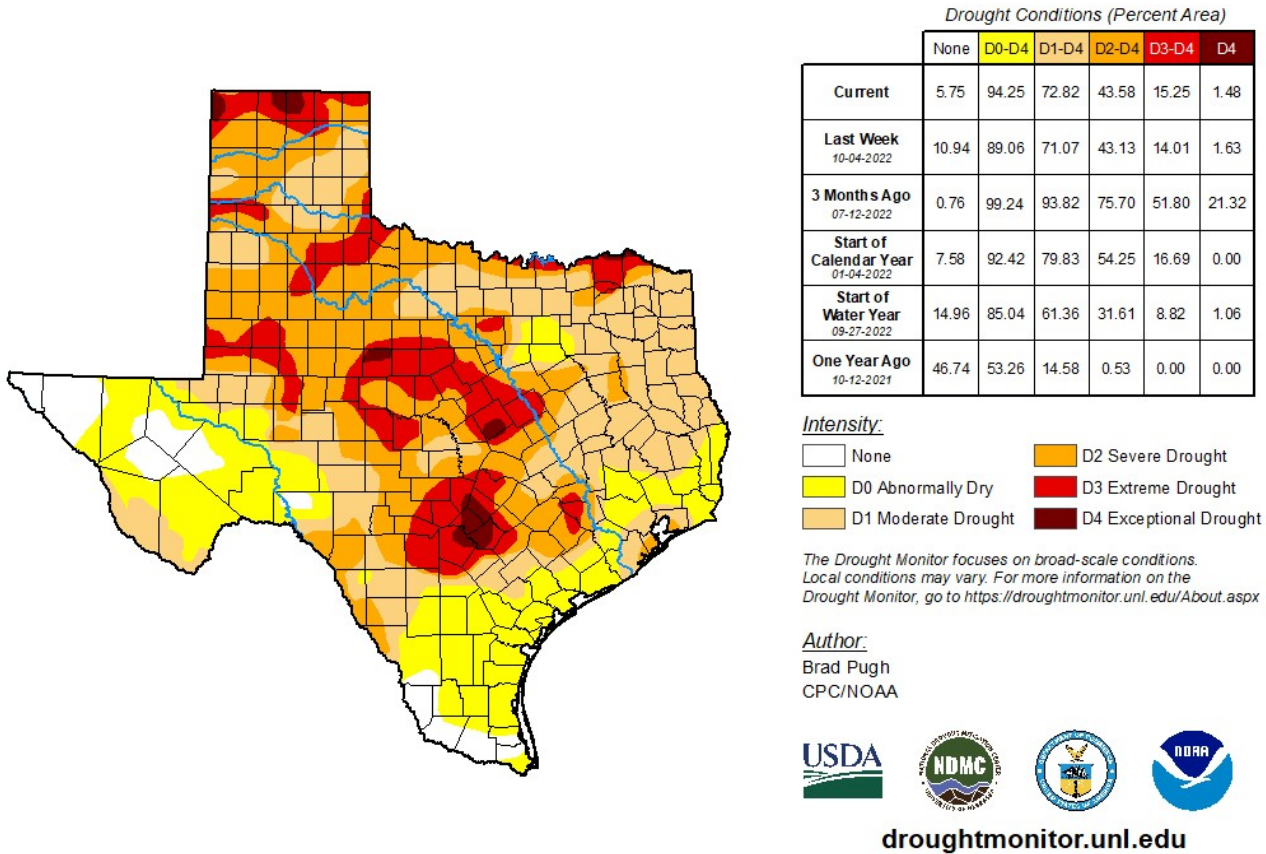


Seven Day Observed Regional Precipitation, October 16, 2022.



Source: National Weather Service, www.nws.noaa.gov

Drought Monitor, Valid October 11, 2022.



Source: National Drought Mitigation Center, a partnership with USDA, U.S. Department of Commerce/NOAA, <http://droughtmonitor.unl.edu>