



Texas Crop Progress and Condition

Southern Plains Regional Field Office
Post Office Box 70 Austin, Texas 78767
(800) 626-3142 · FAX (855) 270-2725 · www.nass.usda.gov/tx

Issue: TX-CW3622

Weekly Summary for September 19 - September 25 Released: September 26, 2022

Areas of the Lower Valley, South Texas, the Coastal Bend, the Upper coast, the Northern High Plains, and the Trans Pecos received from trace amounts to one inch of precipitation. Drought conditions ranged from none to exceptionally dry, with isolated parts of South Central Texas, the Southern Low Plains, and the Blacklands being the driest. There was an average of 6.8 days suitable for fieldwork, up from 6.7 days the previous week.

Small Grains: In the Plains, wheat planting continued, with some earlier planted wheat starting to emerge. Some producers in South Texas prepared fields for oats planting.

Row Crops: Producers in the Northern High Plains continued harvesting corn for silage. Cotton harvest continued in southern areas of the state; drier conditions allowed harvest to continue. Producers in the north waited for bolls to open while others have filed insurance claims for failed crops. Cotton condition was mostly poor-to-fair statewide.

Livestock, Range and Pasture: Supplemental feeding continued across the state. Pastures started to green from the rain received in previous weeks in some areas of the state but areas in the Blacklands and much of the Plains needed more moisture. Range and pasture conditions were rated 56 percent fair to poor.

Crop Progress

Stage	Percent of Acreage			
	Current Week	Previous Week	Previous Year	5 Year Average
Corn				
Mature	93	85	93	85
Harvested	72	68	81	71
Cotton				
Bolls Opening	62	55	52	53
Harvested	25	20	21	21
Peanuts				
Mature	34	29	33	27
Rice				
Harvested	93	92	94	97
Sorghum				
Mature	96	93	89	86
Harvested	82	78	79	79
Soybeans				
Dropping Leaves	87	83	88	79
Harvested	31	25	58	55
Sunflowers				
Harvested	75	70	68	63
Winter Wheat				
Planted	44	33	35	31
Emerged	9	3	9	5
Oats				
Planted	23	5	24	19

(NA) Not available.

Crop Condition

Crop	Percent of Acreage					Index ¹	
	Excellent	Good	Fair	Poor	Very Poor	2022	2021
Corn	3	14	31	23	29	42	78
Cotton	0	12	27	40	21	38	78
Peanuts	0	33	46	16	5	62	80
Rice	22	29	48	1	0	79	-3
Sorghum	1	16	41	29	13	48	79
Soybeans	1	13	30	33	23	40	-3
Range and Pasture	5	15	32	24	24	45	52

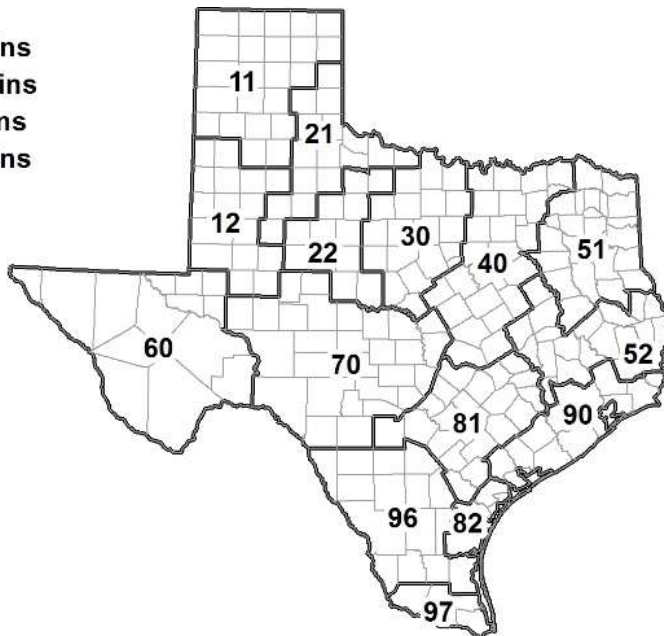
¹ The formula for the condition index is $I = (5V + 25P + 60F + 90G + 110E)/100$ where I = crop condition index and V, P, F, G, E = percentage of crop rated very poor, poor, fair, good, excellent.

Soil Moisture and Days Suitable by District

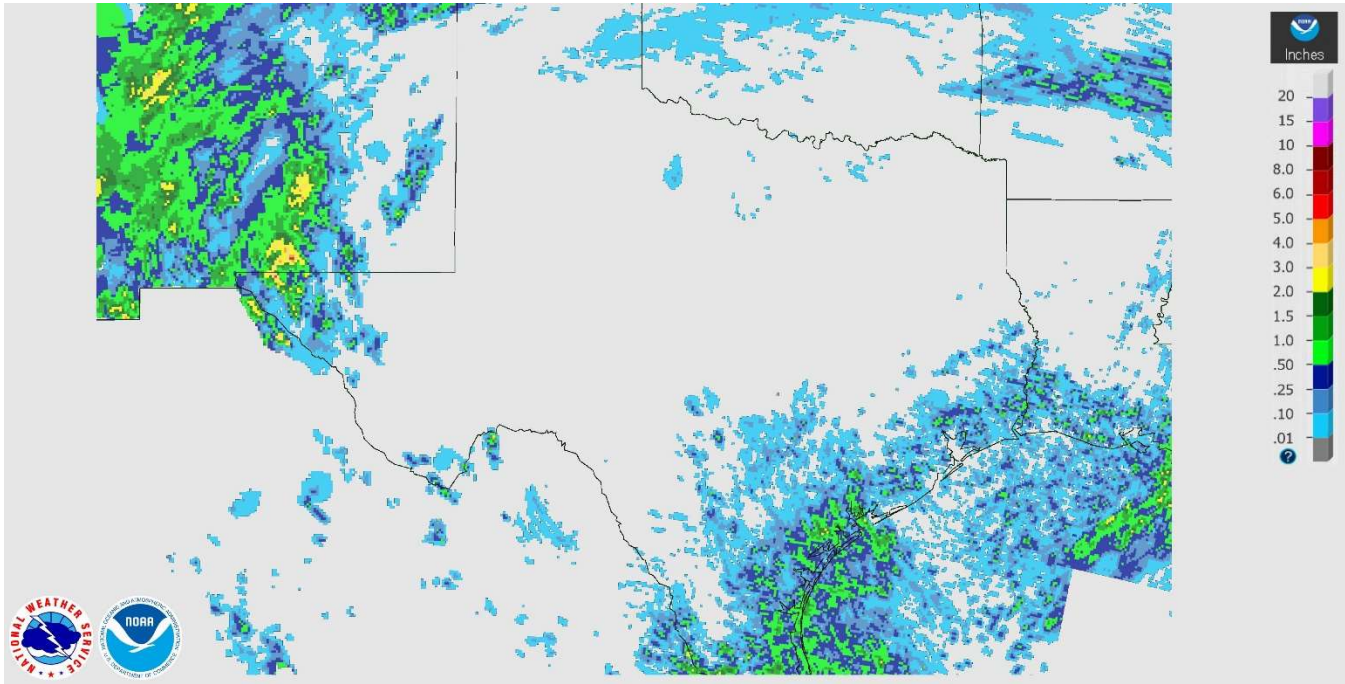
District	Subsoil Moisture Condition by District				Topsoil Moisture Condition by District				Days Suitable for Fieldwork
	Percentage of Acreage				Percentage of Acreage				
	Very Short	Short	Adequate	Surplus	Very Short	Short	Adequate	Surplus	
11	42	35	23	0	27	23	50	0	7.0
12	50	50	0	0	60	10	30	0	7.0
21	48	35	17	0	24	30	44	2	6.6
22	80	20	0	0	62	18	20	0	6.4
30	32	55	13	0	29	62	6	3	6.4
40	38	44	18	0	40	43	16	1	7.0
51	20	54	25	1	21	47	31	1	6.9
52	10	43	47	0	15	44	41	0	7.0
60	5	23	47	25	5	24	47	24	6.3
70	37	58	5	0	73	19	8	0	7.0
81	56	35	9	0	48	46	6	0	6.6
82	0	15	77	8	2	17	73	8	5.4
90	13	33	49	5	3	45	49	3	6.1
96	17	44	39	0	17	46	37	0	6.7
97	5	9	86	0	5	83	12	0	7.0
State	40	39	20	1	37	31	31	1	6.8

Texas Agricultural Districts

- 11 Northern High Plains
- 12 Southern High Plains
- 21 Northern Low Plains
- 22 Southern Low Plains
- 30 Cross Timbers
- 40 Blacklands
- 51 North East
- 52 South East
- 60 Trans-Pecos
- 70 Edwards Plateau
- 81 South Central
- 82 Coastal Bend
- 90 Upper Coast
- 96 South
- 97 Lower Valley

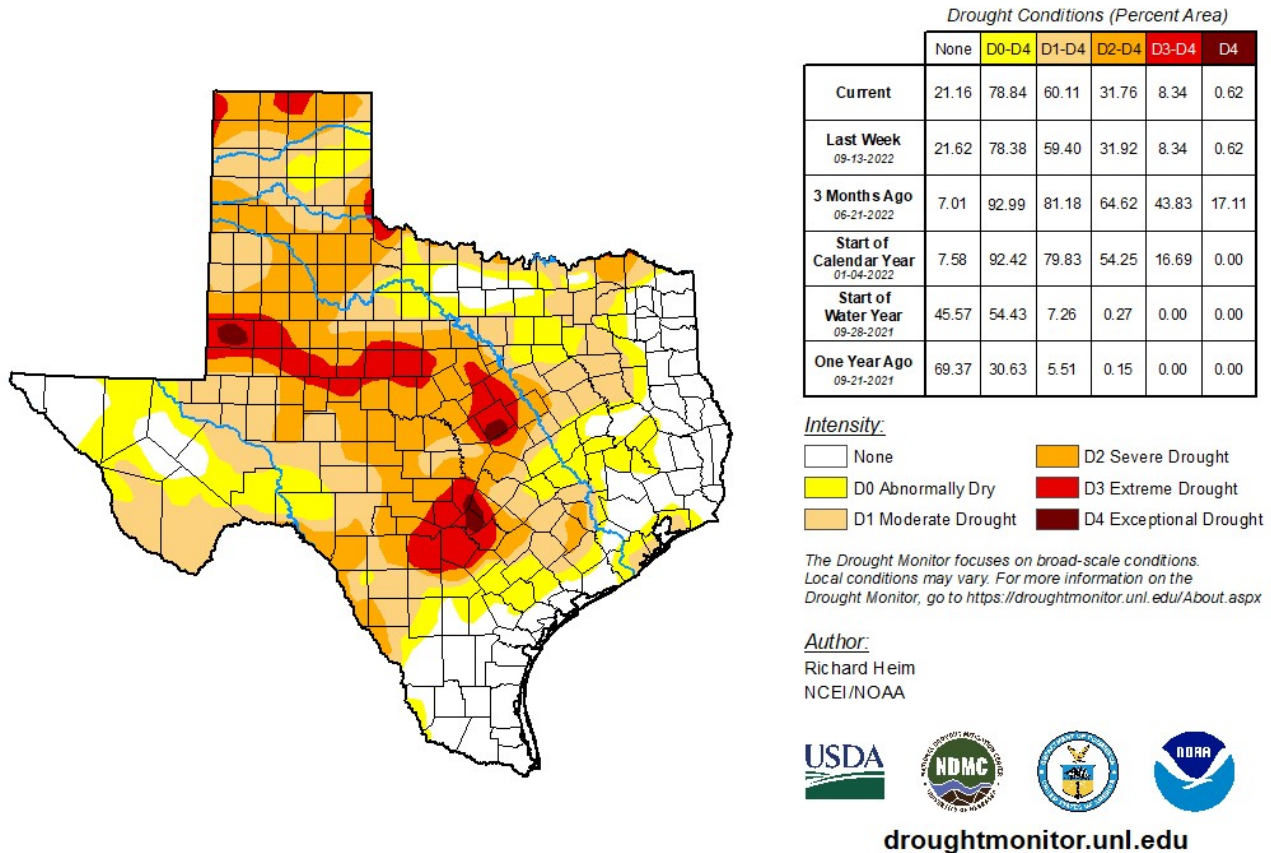


Seven Day Observed Regional Precipitation, September 25, 2022.



Source: National Weather Service, www.nws.noaa.gov

Drought Monitor, Valid September 20, 2022.



Source: National Drought Mitigation Center, a partnership with USDA, U.S. Department of Commerce/NOAA, <http://droughtmonitor.unl.edu>