



Texas Crop Progress and Condition

Southern Plains Regional Field Office
Post Office Box 70 Austin, Texas 78767
(800) 626-3142 · FAX (855) 270-2725 · www.nass.usda.gov/tx

Issue: TX-CW3522

Weekly Summary for September 12 - September 18 Released: September 19, 2022

Areas of the Plains and the Trans Pecos received from trace amounts to one inch of precipitation. Drought conditions ranged from none to exceptionally dry, with isolated parts of South Central Texas, the Southern Low Plains, and the Blacklands being the driest. There was an average of 6.7 days suitable for fieldwork, up from 6.1 days last week.

Small Grains: On the Plains and Edwards Plateau, producers continue to plant winter wheat for fall grazing. In other areas of Texas, farmers are working ground in preparation to plant in the coming weeks.

Row Crops: Producers in the Northern High Plains are harvesting corn for silage. Cotton harvest continued in southern areas of the state while producers in the north waited for bolls to open. Cotton condition was mostly poor-to-fair statewide.

Livestock, Range and Pasture: Supplemental feeding continued across the state. Overall, reporters say pastures continued to green from rain received in previous weeks with the exception of some areas in the Blacklands and much of the Plains. Range and pasture conditions were rated 52 percent fair to poor.

Crop Progress

Stage	Percent of Acreage			
	Current Week	Previous Week	Previous Year	5 Year Average
Corn				
Dented	98	94	97	96
Mature	85	81	84	79
Harvested	68	64	69	66
Cotton				
Bolls Opening	55	50	41	43
Harvested	20	17	18	18
Peanuts				
Mature	29	22	21	20
Rice				
Harvested	92	86	92	95
Sorghum				
Mature	93	88	83	82
Harvested	78	74	72	75
Soybeans				
Dropping Leaves	83	78	77	71
Harvested	25	(NA)	49	48
Sunflowers				
Harvested	70	65	62	59
Winter Wheat				
Planted	33	17	18	16
Oats				
Planted	5	(NA)	9	7

(NA) Not available.

Crop Condition

Crop	Percent of Acreage					Index ¹	
	Excellent	Good	Fair	Poor	Very Poor	2022	2021
Corn	3	14	31	23	29	42	78
Cotton	1	14	29	32	24	40	77
Peanuts	0	32	52	16	0	64	75
Rice	22	29	48	1	0	79	85
Sorghum	1	16	41	29	13	48	79
Soybeans	0	12	31	42	15	41	72
Range and Pasture	6	21	29	23	21	50	53

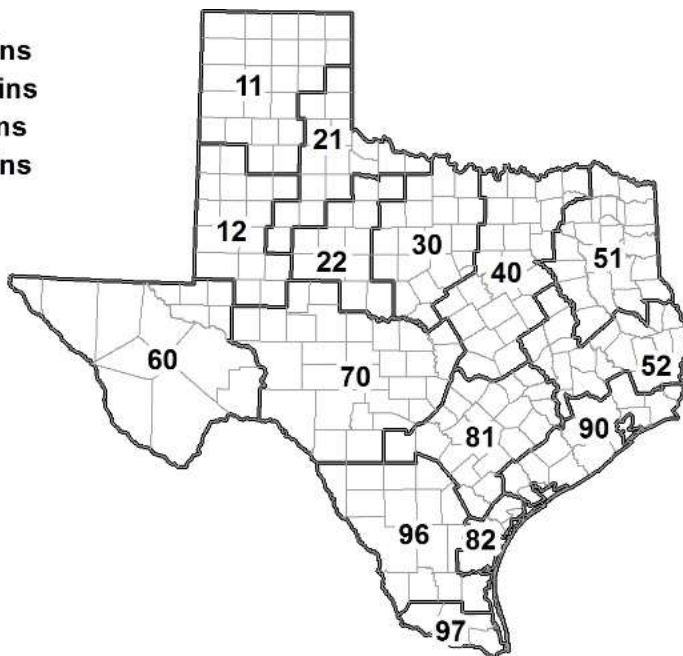
¹ The formula for the condition index is $I = (5V + 25P + 60F + 90G + 110E)/100$ where I = crop condition index and V, P, F, G, E = percentage of crop rated very poor, poor, fair, good, excellent.

Soil Moisture and Days Suitable by District

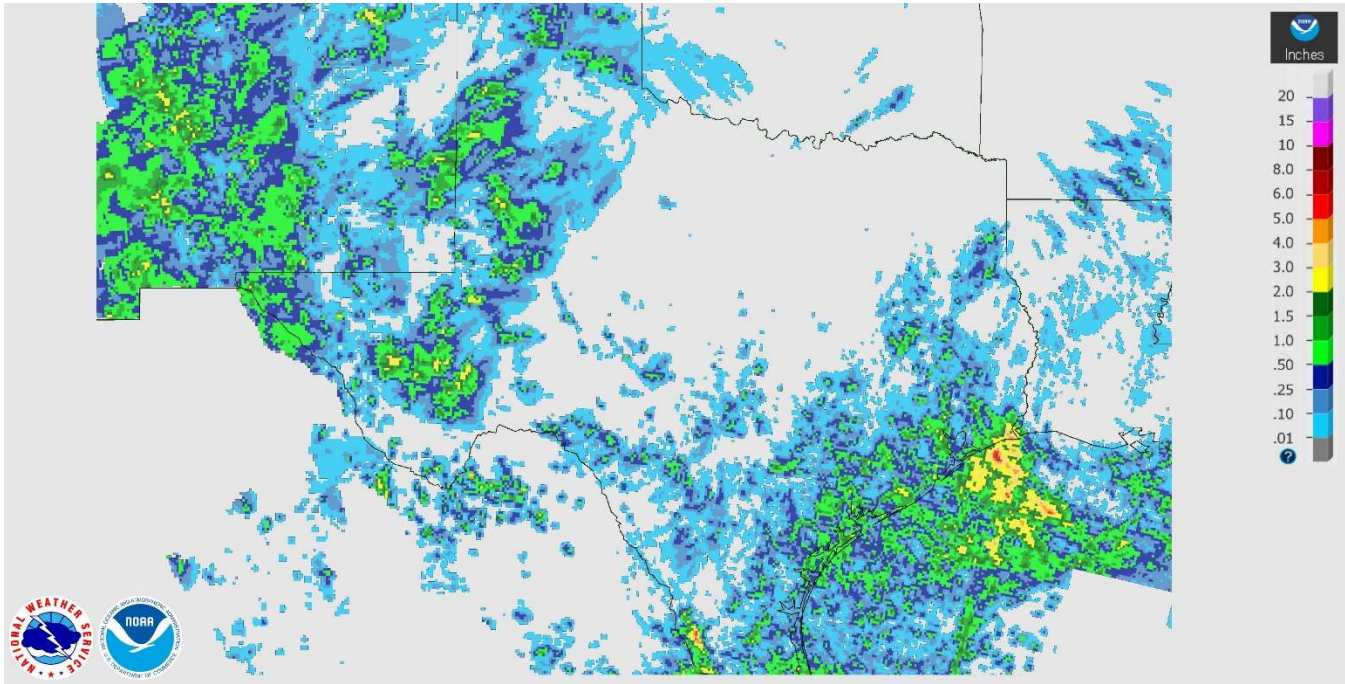
District	Subsoil Moisture Condition by District				Topsoil Moisture Condition by District				Days Suitable for Fieldwork
	Percentage of Acreage				Percentage of Acreage				
	Very Short	Short	Adequate	Surplus	Very Short	Short	Adequate	Surplus	
11	26	64	10	0	34	34	32	0	7.0
12	64	23	13	0	38	50	12	0	7.0
21	29	47	23	1	41	30	28	1	6.3
22	70	30	0	0	57	33	10	0	6.5
30	32	47	18	3	25	58	14	3	6.5
40	40	37	21	2	31	25	38	6	7.0
51	14	44	42	0	6	49	45	0	6.9
52	9	34	57	0	12	32	55	1	6.9
60	4	25	59	12	4	26	59	11	6.2
70	24	48	28	0	14	56	30	0	6.7
81	39	53	8	0	24	65	11	0	6.4
82	0	15	81	4	2	20	74	4	3.9
90	0	14	69	17	6	15	60	19	5.7
96	16	24	58	2	17	22	60	1	6.2
97	2	11	77	10	6	56	33	5	6.7
State	36	39	23	2	30	39	29	2	6.7

Texas Agricultural Districts

- 11 Northern High Plains
- 12 Southern High Plains
- 21 Northern Low Plains
- 22 Southern Low Plains
- 30 Cross Timbers
- 40 Blacklands
- 51 North East
- 52 South East
- 60 Trans-Pecos
- 70 Edwards Plateau
- 81 South Central
- 82 Coastal Bend
- 90 Upper Coast
- 96 South
- 97 Lower Valley

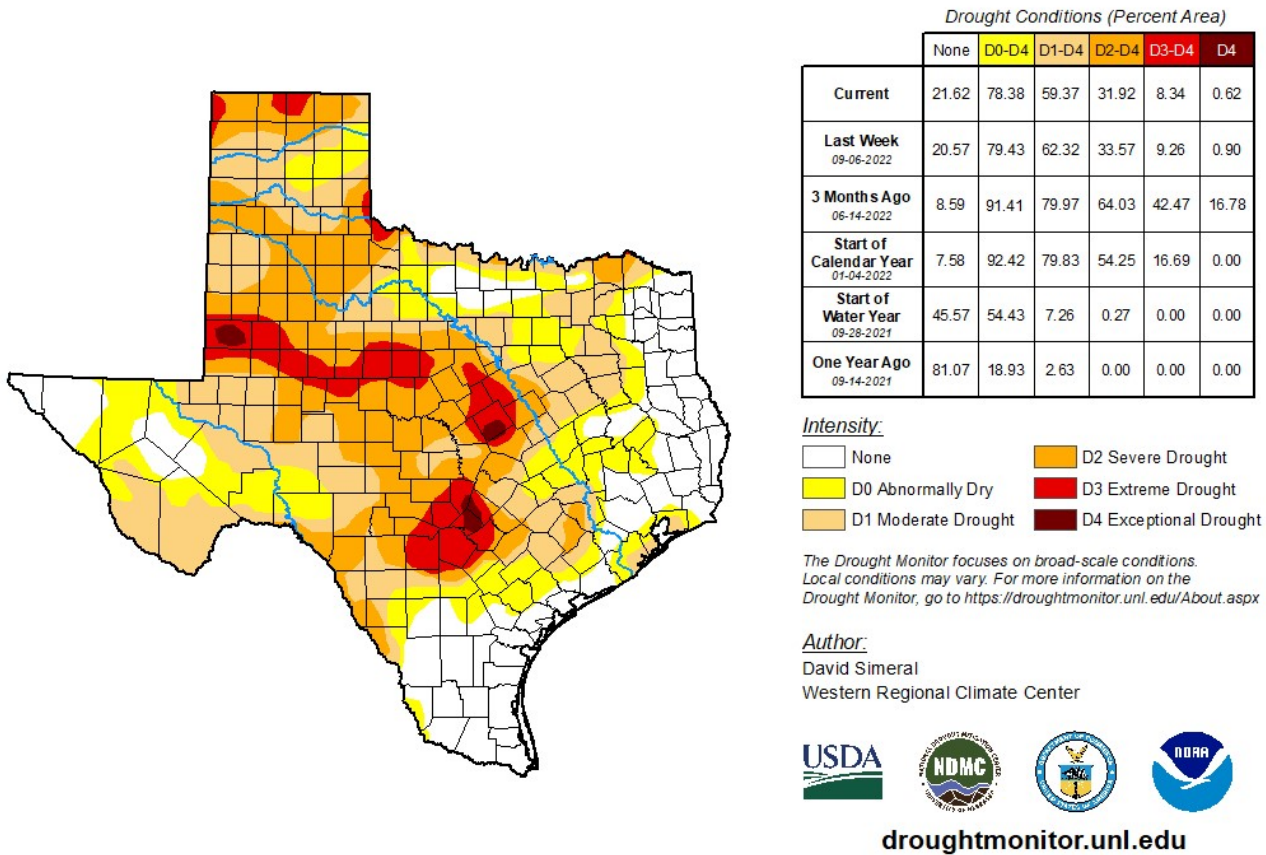


Seven Day Observed Regional Precipitation, September 18, 2022.



Source: National Weather Service, www.nws.noaa.gov

Drought Monitor, Valid September 13, 2022.



Source: National Drought Mitigation Center, a partnership with USDA, U.S. Department of Commerce/NOAA, <http://droughtmonitor.unl.edu>