



Texas Crop Progress and Condition

Southern Plains Regional Field Office
Post Office Box 70 Austin, Texas 78767
(800) 626-3142 · FAX (855) 270-2725 · www.nass.usda.gov/tx

Issue: TX-CW3322

Weekly Summary for August 29 - September 4

Released: September 6, 2022

Much of the state received from trace amounts to 3.00 inches of precipitation. Isolated areas in the Edwards Plateau, the Blacklands, East and South Central Texas received significantly higher amounts. Drought conditions ranged from none to exceptionally dry, with South Central Texas being the driest. There was an average of 4.6 days suitable for fieldwork, down from 5.0 days last week.

Row Crops: Cotton harvest has started in areas of the Blacklands, South Central Texas, the Coastal Bend, the Upper Coast, South Texas and the Lower Valley. In the Northern High Plains, sorghum progressed with some fields beginning to color. Reporters indicated that the corn crop was coming along, with many producers finishing up watering and preparing for the harvest. Producers in North Texas have begun to harvest corn silage.

Small grain: Producers began to plant winter wheat for fall grazing in the Plains. Farmers are working ground in preparation to plant wheat

Livestock, Range and Pasture: Supplemental feeding continued across the state. Desert termites in South East Texas have taken a toll on the improved grass; producers hope the grass will outgrow the damage. Overall, pastures continued to green from rain received in previous weeks. Producers continued liquidating their cattle due to the lack of quality pastureland and dry conditions. Range and pasture conditions were rated 51 percent very poor to poor.

Crop Progress

Stage	Percent of Acreage			
	Current Week	Previous Week	Previous Year	5 Year Average
Corn				
Dough	98	94	98	97
Dented	88	84	88	89
Mature	75	72	65	65
Harvested	59	53	53	55
Cotton				
Setting Bolls	96	92	90	95
Bolls Opening	41	35	27	30
Harvested	11	(NA)	(NA)	10
Peanuts				
Pegging	97	93	96	97
Mature	11	6	9	10
Rice				
Harvested	81	77	82	83
Sorghum				
Coloring	95	90	88	87
Mature	80	75	77	76
Harvested	68	62	66	67
Soybeans				
Setting Pods	95	90	90	89
Dropping Leaves	69	61	56	52
Mature	36	20	(NA)	(NA)
Sunflowers				
Harvested	56	51	56	52

(NA) Not available.

Crop Condition

Crop	Percent of Acreage					Index ¹	
	Excellent	Good	Fair	Poor	Very Poor	2022	2021
Corn	3	14	31	23	29	42	78
Cotton	2	15	38	23	22	45	75
Peanuts	1	33	51	14	1	65	77
Rice	22	29	48	1	0	79	85
Sorghum	1	16	41	29	13	48	79
Soybeans	1	14	40	38	7	48	69
Range and Pasture	3	17	29	21	30	43	65

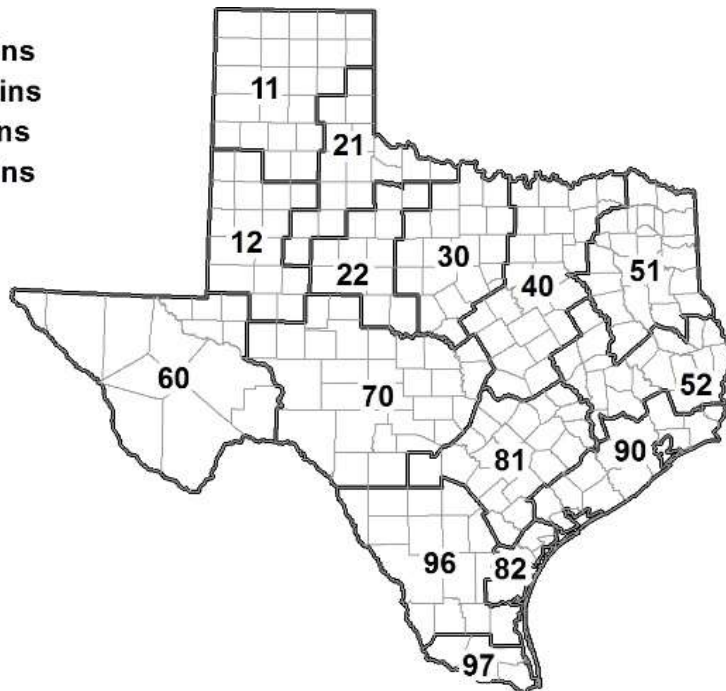
¹ The formula for the condition index is $I = (5V + 25P + 60F + 90G + 110E)/100$ where I = crop condition index and V, P, F, G, E = percentage of crop rated very poor, poor, fair, good, excellent.

Soil Moisture and Days Suitable by District

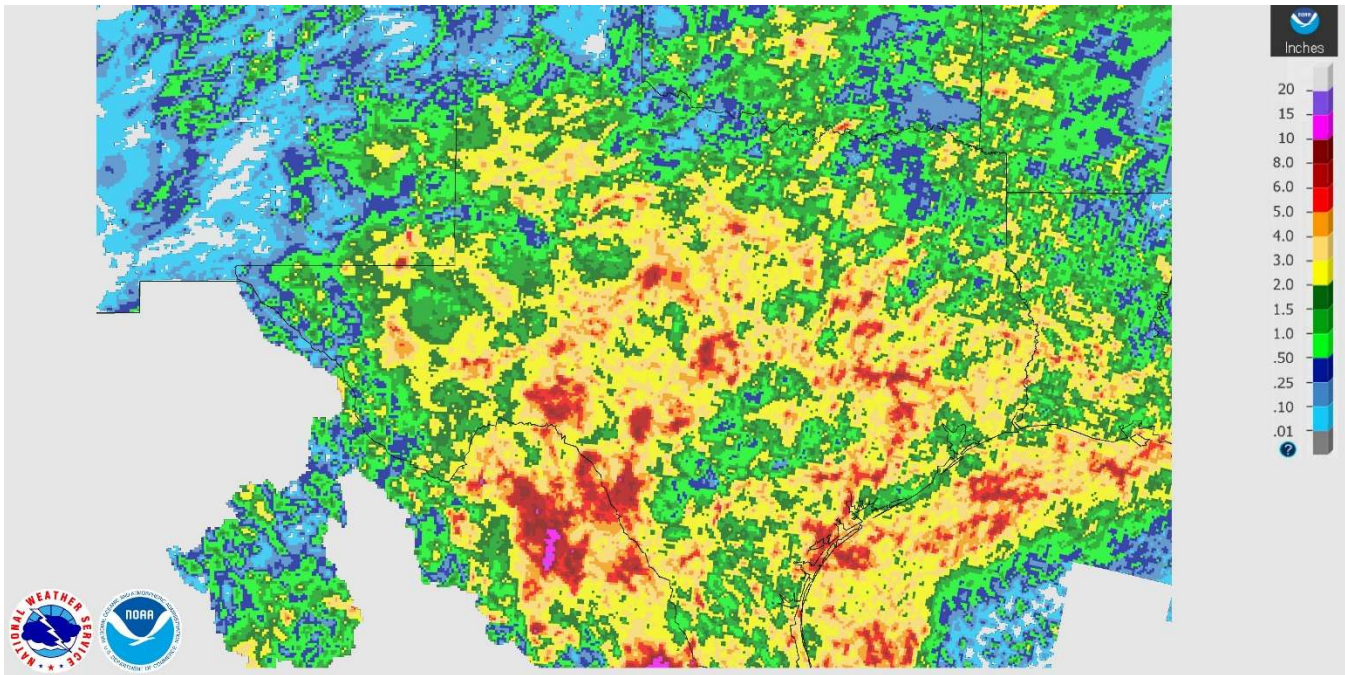
District	Subsoil Moisture Condition by District				Topsoil Moisture Condition by District				Days Suitable for Fieldwork
	Percentage of Acreage				Percentage of Acreage				
	Very Short	Short	Adequate	Surplus	Very Short	Short	Adequate	Surplus	
11	13	43	44	0	18	28	54	0	5.2
12	92	8	0	0	18	33	49	0	5.9
21	36	25	39	0	27	26	37	10	5.9
22	33	62	5	0	7	51	42	0	2.2
30	23	62	15	0	13	49	36	2	4.4
40	18	26	48	8	10	22	63	5	3.2
51	15	35	46	4	6	25	63	6	6.2
52	3	34	63	0	1	24	71	4	5.4
60	5	14	77	4	5	16	77	2	4.1
70	40	5	55	0	3	12	85	0	2.8
81	38	30	32	0	6	50	44	0	4.9
82	0	0	100	0	0	30	70	0	7.0
90	23	5	47	25	0	9	66	25	1.1
96	5	22	72	1	2	26	70	2	4.6
97	3	13	84	0	22	50	28	0	4.8
State	34	29	35	2	13	31	53	3	4.6

Texas Agricultural Districts

- 11 Northern High Plains
- 12 Southern High Plains
- 21 Northern Low Plains
- 22 Southern Low Plains
- 30 Cross Timbers
- 40 Blacklands
- 51 North East
- 52 South East
- 60 Trans-Pecos
- 70 Edwards Plateau
- 81 South Central
- 82 Coastal Bend
- 90 Upper Coast
- 96 South
- 97 Lower Valley

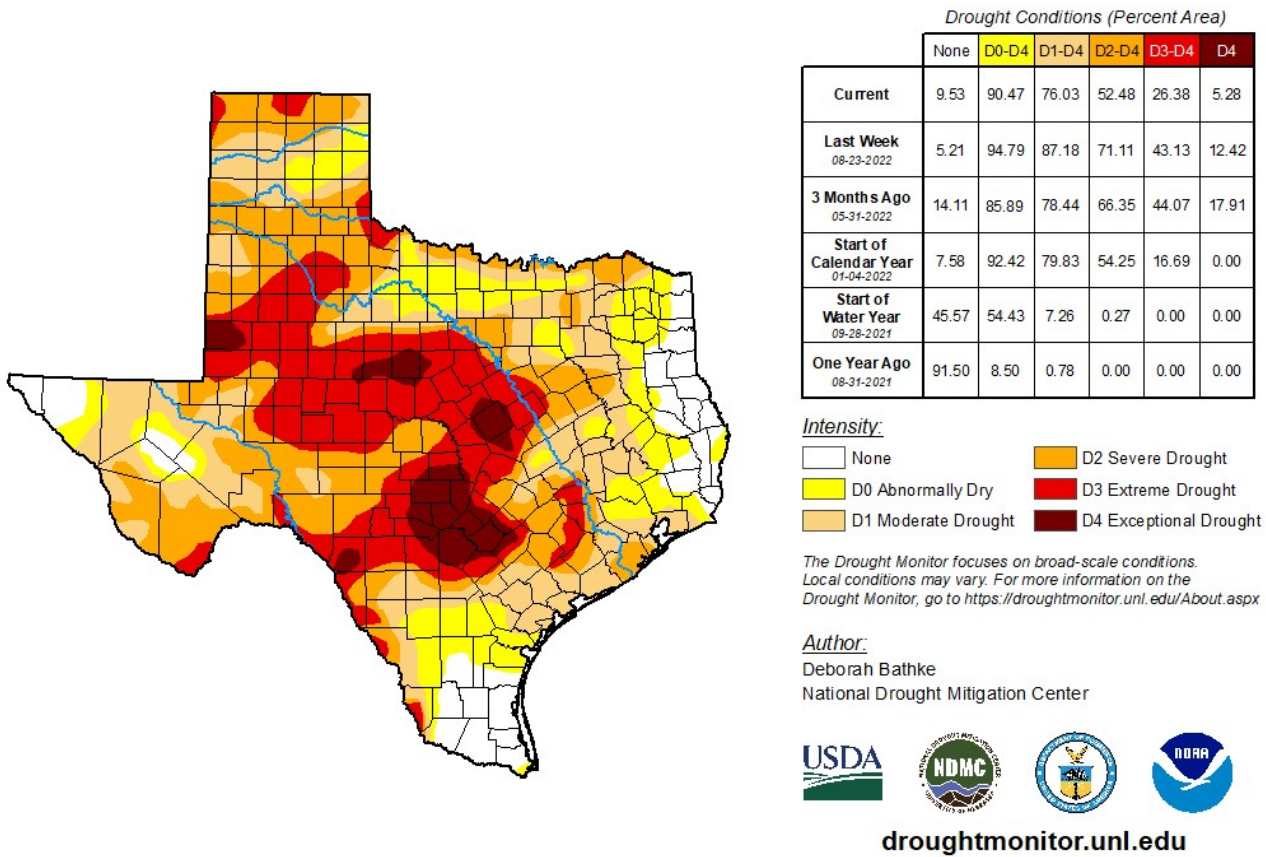


Seven Day Observed Regional Precipitation, September 04, 2022.



Source: National Weather Service, www.nws.noaa.gov

Drought Monitor, Valid August 30, 2022.



Source: National Drought Mitigation Center, a partnership with USDA, U.S. Department of Commerce/NOAA, <http://droughtmonitor.unl.edu>