



Texas Crop Progress and Condition

Southern Plains Regional Field Office
Post Office Box 70 Austin, Texas 78767
(800) 626-3142 · FAX (855) 270-2725 · www.nass.usda.gov/tx

Issue: TX-CW3222

Weekly Summary for August 22 - August 28

Released: August 29, 2022

Much of the state received from trace amounts to 3.00 inches of precipitation. Isolated areas in North East Texas received significantly higher amounts. A state disaster declaration was signed for 23 counties after some parts the Dallas area received more than ten inches of rainfall on Monday. Drought conditions ranged from none to exceptionally dry, with the Edwards Plateau, the Blacklands, and South Central Texas being the driest. There was an average of 5.0 days suitable for fieldwork, down from last week.

Row Crops: There were reports of cotton harvest nearing completion in several southern counties, however some harvest schedules were slowed due to last week's rains. Some producers anticipated lower than average yields. Sorghum progressed moderately over the past week across the state. In the Blacklands, soybeans were reported to look poor but were expected to be taken to harvest.

Livestock, Range and Pasture: Supplemental feeding continued across the state. There have been signs of desert termites in the Northern Low Plains and the Cross Timbers. Overall, there were reports of pastures beginning to green from rain received the previous week. Producers continued liquidating their cattle due to the lack of quality pastureland and dry conditions. Range and pasture conditions were rated 69 percent very poor to poor.

Crop Progress

Stage	Percent of Acreage			
	Current Week	Previous Week	Previous Year	5 Year Average
Corn				
Dough	94	86	94	95
Dented	84	76	84	85
Mature	72	67	60	60
Harvested	53	44	48	51
Cotton				
Setting Bolls	92	85	80	88
Bolls Opening	35	25	21	25
Peanuts				
Pegging	93	87	92	94
Mature	6	0	6	6
Rice				
Harvested	77	66	66	72
Sorghum				
Coloring	90	81	84	83
Mature	75	67	74	73
Harvested	62	52	62	64
Soybeans				
Setting Pods	90	84	86	85
Dropping Leaves	61	47	50	44
Sunflowers				
Harvested	51	46	52	48

Crop Condition

Crop	Percent of Acreage					Index ¹	
	Excellent	Good	Fair	Poor	Very Poor	2022	2021
Corn	3	14	31	23	29	42	78
Cotton	1	14	32	27	26	41	81
Peanuts	1	27	60	12	0	64	84
Rice	22	29	48	1	0	79	85
Sorghum	1	16	41	29	13	48	79
Soybeans	3	23	31	31	12	51	72
Range and Pasture	1	8	22	30	39	31	65

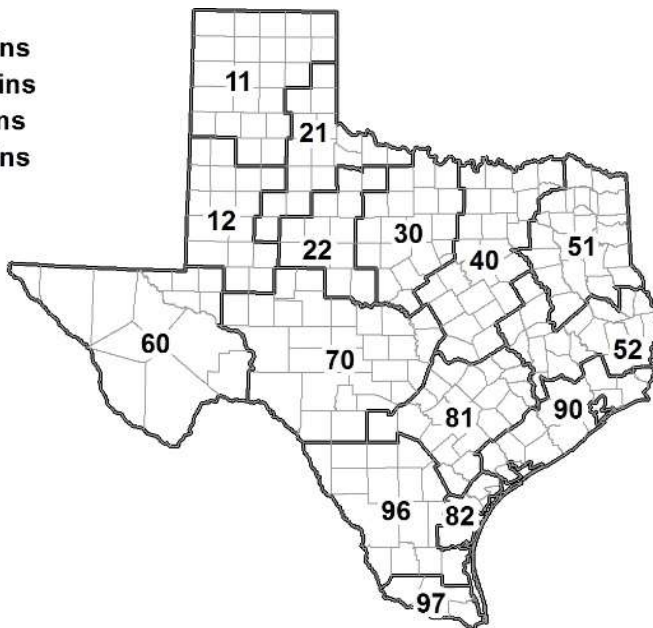
¹ The formula for the condition index is $I = (5V + 25P + 60F + 90G + 110E)/100$ where I = crop condition index and V, P, F, G, E = percentage of crop rated very poor, poor, fair, good, excellent.

Soil Moisture and Days Suitable by District

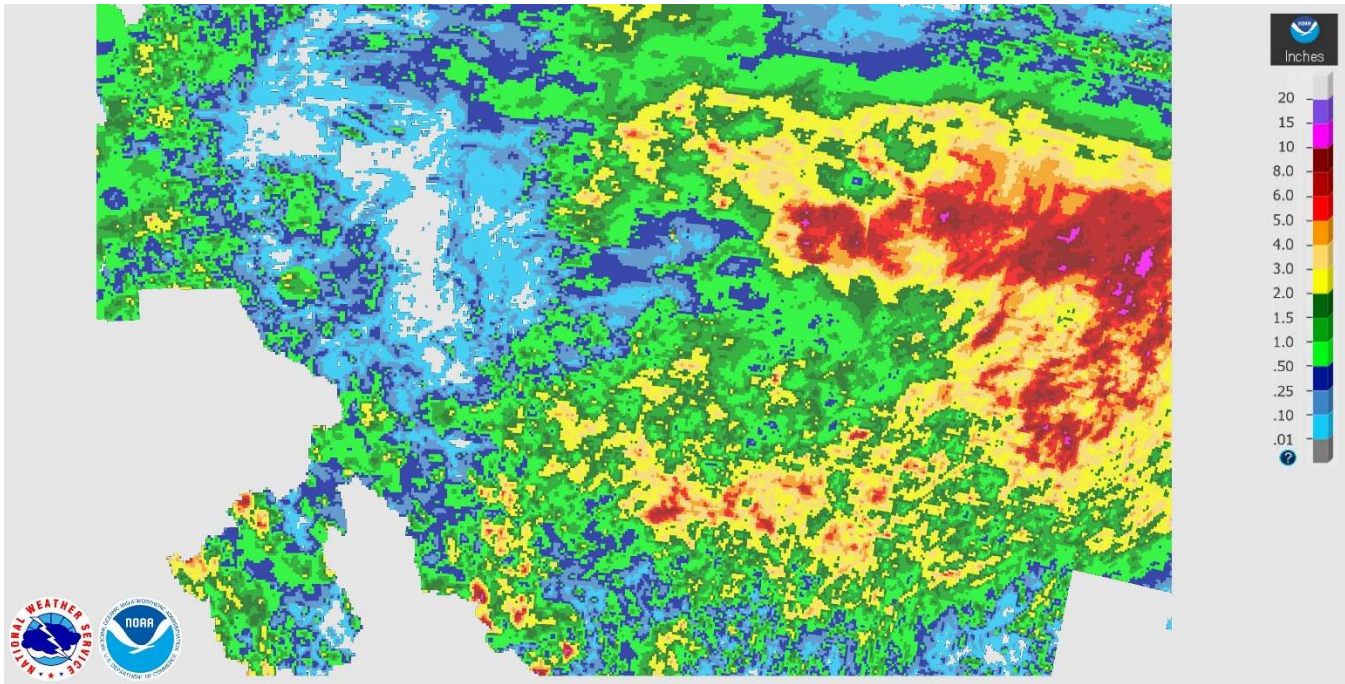
District	Subsoil Moisture Condition by District				Topsoil Moisture Condition by District				Days Suitable for Fieldwork
	Percentage of Acreage				Percentage of Acreage				
	Very Short	Short	Adequate	Surplus	Very Short	Short	Adequate	Surplus	
11	12	34	54	0	8	17	66	9	5.0
12	100	0	0	0	100	0	0	0	5.0
21	23	28	47	2	18	23	56	3	5.2
22	70	26	4	0	57	21	21	1	5.5
30	50	38	9	3	46	35	16	3	5.6
40	35	30	34	1	23	34	38	5	4.5
51	76	17	5	2	72	26	2	0	5.6
52	25	23	31	21	20	36	41	3	5.5
60	12	40	40	8	10	22	58	10	6.3
70	58	33	9	0	56	27	17	0	6.2
81	84	16	0	0	51	14	35	0	5.4
82	0	0	55	45	0	0	55	45	1.1
90	5	23	53	19	5	20	54	21	4.0
96	12	19	61	8	7	15	68	10	4.8
97	16	22	59	3	28	19	52	1	4.4
State	47	22	28	3	42	18	35	5	5.0

Texas Agricultural Districts

- 11 Northern High Plains
- 12 Southern High Plains
- 21 Northern Low Plains
- 22 Southern Low Plains
- 30 Cross Timbers
- 40 Blacklands
- 51 North East
- 52 South East
- 60 Trans-Pecos
- 70 Edwards Plateau
- 81 South Central
- 82 Coastal Bend
- 90 Upper Coast
- 96 South
- 97 Lower Valley

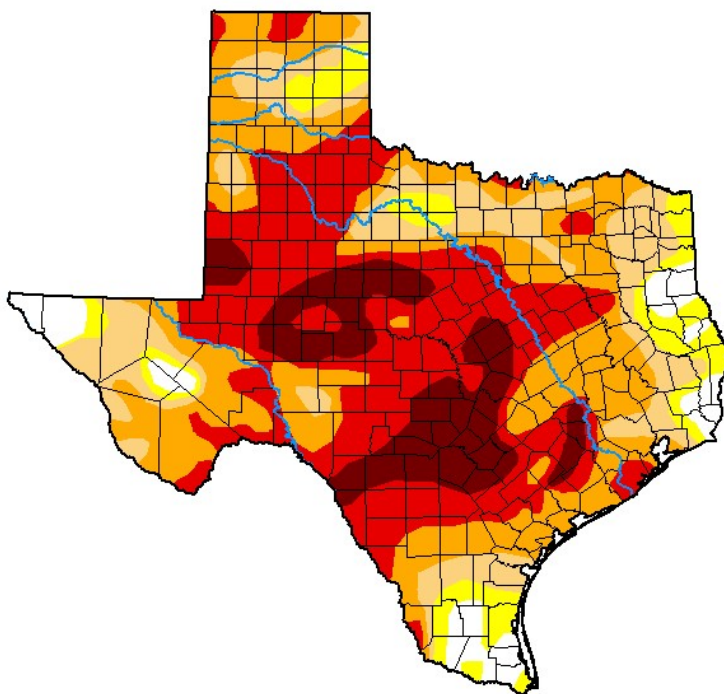


Seven Day Observed Regional Precipitation, August 28, 2022.



Source: National Weather Service, www.nws.noaa.gov

Drought Monitor, Valid August 23, 2022.



Drought Conditions (Percent Area)

	None	D0-D4	D1-D4	D2-D4	D3-D4	D4
Current	5.21	94.79	87.18	71.11	43.13	12.42
Last Week <i>08-16-2022</i>	2.79	97.21	93.40	85.05	61.91	26.49
3 Months Ago <i>05-24-2022</i>	12.92	87.08	79.11	66.94	46.05	22.08
Start of Calendar Year <i>01-04-2022</i>	7.58	92.42	79.83	54.25	16.69	0.00
Start of Water Year <i>09-28-2021</i>	45.57	54.43	7.26	0.27	0.00	0.00
One Year Ago <i>08-24-2021</i>	94.51	5.49	1.10	0.00	0.00	0.00

Intensity:

- None
- D0 Abnormally Dry
- D1 Moderate Drought
- D2 Severe Drought
- D3 Extreme Drought
- D4 Exceptional Drought

The Drought Monitor focuses on broad-scale conditions. Local conditions may vary. For more information on the Drought Monitor, go to <https://droughtmonitor.unl.edu/About.aspx>

Author:

Deborah Bathke
National Drought Mitigation Center



droughtmonitor.unl.edu

Source: National Drought Mitigation Center, a partnership with USDA, U.S. Department of Commerce/NOAA, <http://droughtmonitor.unl.edu>