



Texas Crop Progress and Condition

Southern Plains Regional Field Office
Post Office Box 70 Austin, Texas 78767
(800) 626-3142 · FAX (855) 270-2725 · www.nass.usda.gov/tx

Issue: TX-CW2722

Weekly Summary for July 18 - July 24

Released: July 25th, 2022

Most of the state received from trace amounts to upwards of 3.0 inches of precipitation. There was extreme drought throughout most of the state, while some areas of the state had exceptional drought. There were 6.7 days suitable for fieldwork.

Row Crops: Corn mature reached 20 percent, up 1 point from the previous year and unchanged from normal, with some areas of the state reporting harvesting. Corn yields were reported poor in the Southern High Plains and the Cross Timbers because of the heat on the crop. Irrigated cotton across the state is in good condition while non-irrigated cotton around the state struggled. Peanuts are in pegging stage in South Texas. Rice has begun harvest in the Upper Coast. Irrigated sorghum is doing well in the Northern High Plains and in the Southern Low Plains. Sorghum is being harvested in the Blacklands, the Edwards Plateau, the Coastal Bend, and the Upper Coast with 42 percent of the crop in fair condition. Soybeans have been baled for hay in the Blacklands due to excessive heat.

Fruit, Vegetable and Specialty Crops: In North East Texas, some vegetable crops started to dry up due to lack of moisture. Melon harvest continued in areas of the Southern High Plains. Pecan yields were reported good in the Trans-Pecos.

Livestock, Range and Pasture: Insect pressure was reported as low in the Northern High Plains and the Blacklands while grasshoppers were a continuous problem in the Cross Timbers. Cattle are reported to be in good condition in the Southern High Plains but producers across much of the state had sold livestock or continued with supplemental feeding due to the heat. Pasture and hay conditions have been drying out and the state has had an increase in pasture fires. Pasture and range condition was rated 89 percent very poor to poor.

Crop Progress

Stage	Percent of Acreage			
	Current Week	Previous Week	Previous Year	5 Year Average
Corn				
Silked	86	77	87	85
Dough	68	62	66	63
Dented	54	40	51	49
Mature	20	(NA)	19	20
Harvested	7	(NA)	0	2
Cotton				
Squaring	75	68	71	75
Setting Bolls	45	25	28	29
Peanuts				
Pegging	40	28	39	43
Rice				
Headed	68	63	80	86
Sorghum				
Headed	84	77	85	79
Coloring	63	57	63	63
Mature	45	32	41	43
Harvested	10	(NA)	0	22
Soybeans				
Blooming	79	77	77	74
Setting Pods	45	30	43	42
Sunflowers				
Harvested	24	20	25	24

(NA) Not available.

Crop Condition

Crop	Percent of Acreage					Index ¹	
	Excellent	Good	Fair	Poor	Very Poor	2022	2021
Corn	3	21	34	30	12	51	78
Cotton	2	15	43	19	21	47	74
Peanuts	3	23	63	10	1	64	76
Rice	14	24	61	1	0	74	78
Sorghum	3	19	42	20	16	51	79
Soybeans	3	36	33	16	12	60	72
Range and Pasture	0	2	9	32	57	18	72

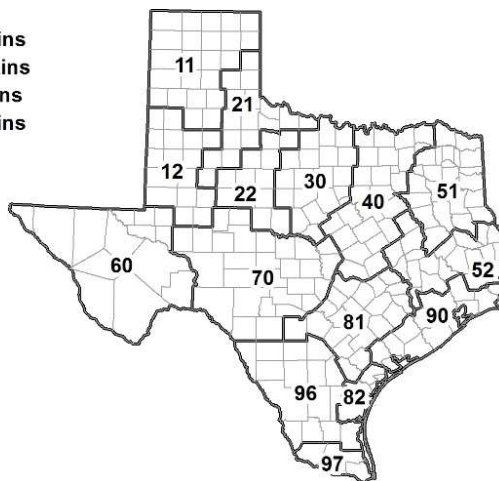
¹ The formula for the condition index is $I = (5V + 25P + 60F + 90G + 110E)/100$ where I = crop condition index and V, P, F, G, E = percentage of crop rated very poor, poor, fair, good, excellent.

Soil Moisture and Days Suitable by District

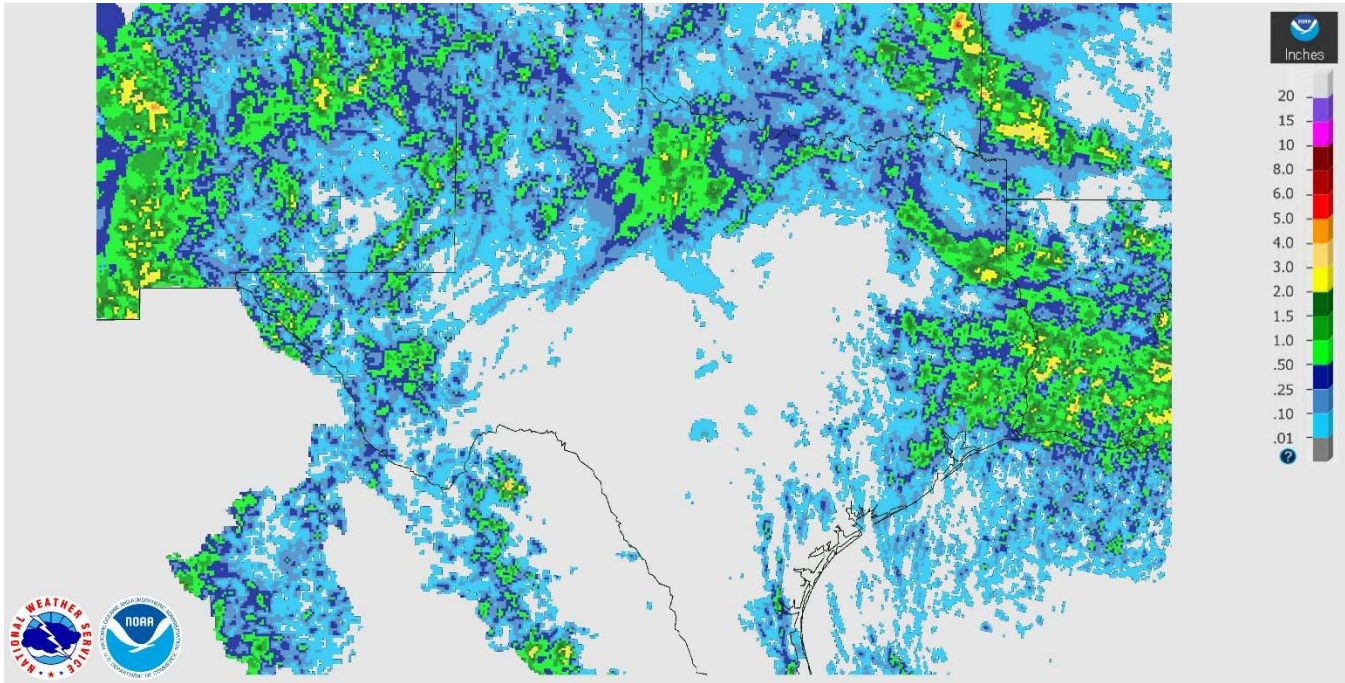
District	Topsoil Moisture Condition by District				Subsoil Moisture Condition by District				Days Suitable for Fieldwork
	Percentage of Acreage				Percentage of Acreage				
	Very Short	Short	Adequate	Surplus	Very Short	Short	Adequate	Surplus	
11	59	28	13	0	61	32	7	0	6.7
12	33	40	27	0	33	40	27	0	7.0
21	63	35	2	0	64	34	2	0	7.0
22	98	2	0	0	80	20	0	0	6.2
30	84	11	5	0	69	28	3	0	5.6
40	88	12	0	0	71	27	2	0	6.9
51	57	34	7	2	56	37	7	0	6.7
52	69	31	0	0	60	37	3	0	7.0
60	18	8	74	0	17	9	74	0	7.0
70	84	16	0	0	81	18	1	0	7.0
81	68	32	0	0	64	36	0	0	6.6
82	61	27	12	0	61	24	15	0	7.0
90	76	22	2	0	72	26	2	0	7.0
96	57	18	25	0	57	18	21	4	6.2
97	76	14	10	0	27	60	13	0	5.0
State	65	25	10	0	59	32	9	0	6.7

Texas Agricultural Districts

- 11 Northern High Plains
- 12 Southern High Plains
- 21 Northern Low Plains
- 22 Southern Low Plains
- 30 Cross Timbers
- 40 Blacklands
- 51 North East
- 52 South East
- 60 Trans-Pecos
- 70 Edwards Plateau
- 81 South Central
- 82 Coastal Bend
- 90 Upper Coast
- 96 South
- 97 Lower Valley

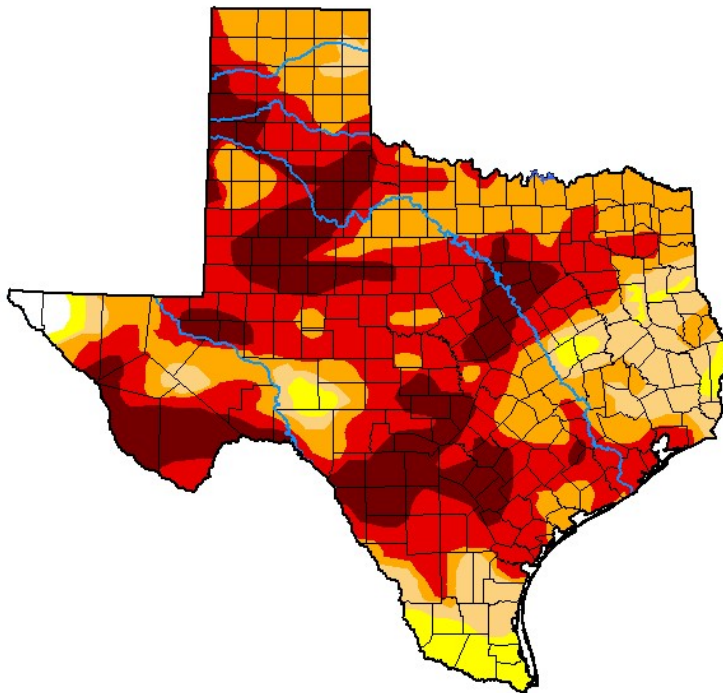


Seven Day Observed Regional Precipitation, July 24, 2022.



Source: National Weather Service, www.nws.noaa.gov

Drought Monitor, Valid July 19, 2022.



Drought Conditions (Percent Area)

	None	D0-D4	D1-D4	D2-D4	D3-D4	D4
Current	0.82	99.18	94.77	84.08	56.67	20.40
Last Week <i>07-12-2022</i>	0.76	99.24	93.82	75.70	51.80	21.32
3 Months Ago <i>04-19-2022</i>	3.87	96.13	87.38	72.46	53.54	15.91
Start of Calendar Year <i>01-04-2022</i>	7.58	92.42	79.83	54.25	16.69	0.00
Start of Water Year <i>09-28-2021</i>	45.57	54.43	7.26	0.27	0.00	0.00
One Year Ago <i>07-20-2021</i>	92.29	7.71	3.46	0.00	0.00	0.00

Intensity:

- None
- D0 Abnormally Dry
- D1 Moderate Drought
- D2 Severe Drought
- D3 Extreme Drought
- D4 Exceptional Drought

The Drought Monitor focuses on broad-scale conditions. Local conditions may vary. For more information on the Drought Monitor, go to <https://droughtmonitor.unl.edu/About.aspx>

Author:

Brian Fuchs
National Drought Mitigation Center



droughtmonitor.unl.edu

Source: National Drought Mitigation Center, a partnership with USDA, U.S. Department of Commerce/NOAA, <http://droughtmonitor.unl.edu>