



Texas Crop Progress and Condition

Southern Plains Regional Field Office
Post Office Box 70 Austin, Texas 78767
(800) 626-3142 · FAX (855) 270-2725 · www.nass.usda.gov/tx

Issue: TX-CW2522

Weekly Summary for July 4 - July 10

Released: July 11, 2022

Most of the state received from trace amounts to upwards of 3.0 inches of precipitation. There was extreme drought observed across 24 percent of the state, according to the latest report of the US Drought Monitor. Topsoil and subsoil moisture conditions were rated mostly very short to short. There was an average of 6.6 days suitable for fieldwork.

Small Grains: Wheat producers had completed harvest in the Northern High Plains and reported less than normal yields. Winter wheat harvested reached 97 percent, up 4 points from the previous year and up 3 points from normal. Oats harvested reached 97 percent, up 1 point from the previous year and no change from normal.

Row Crops: The cotton crop across the state continued to show signs of stress due to heat and lack of moisture. Corn and sorghum harvest has started or is continuing throughout the state. Sorghum producers neared harvest completion in parts of the Coastal Bend, the Upper Coast, and the Lower Valley. Sunflower harvest had begun in the Blacklands. Rice crops continued to progress in the Upper Coast. Peanut plantings in areas of South Texas had reached the pegging stage.

Fruit, Vegetable and Specialty Crops: In the Southern High Plains, melon harvest continued and lower than normal yields were observed. Non-irrigated vegetables in South East Texas had dried out due to lack of moisture while irrigated melons had been harvested with exceptional yields. Due to the heat, sugar cane producers continued irrigation in the Lower Valley.

Livestock, Range and Pasture: Supplemental feeding continued across the state. Some cattle producers had begun to cull their stock due to the price of feed. Range and pasture conditions were rated 83 percent, very poor to poor. Moths and grasshoppers were reported in large numbers in the Northern Low Plains, the Cross Timbers, and East Texas.

Crop Progress

Stage	Percent of Acreage			
	Current Week	Previous Week	Previous Year	5 Year Average
Corn				
Silked	73	71	79	73
Dough	52	50	59	55
Dented	32	(NA)	33	26
Cotton				
Squaring	46	35	44	50
Setting Bolls	20	15	15	16
Peanuts				
Pegging	12	9	15	18
Rice				
Headed	55	47	65	69
Sorghum				
Headed	69	65	78	69
Coloring	50	46	50	52
Soybeans				
Blooming	66	61	69	63
Setting Pods	17	10	(NA)	(NA)
Sunflowers				
Harvested	15	8	15	(NA)
Winter Wheat				
Harvested	97	94	93	94

(NA) Not available.

Crop Condition

Crop	Percent of Acreage					Index ¹	
	Excellent	Good	Fair	Poor	Very Poor	2022	2021
Corn	4	23	31	25	17	51	83
Cotton	2	19	38	19	22	48	71
Peanuts	5	27	49	15	4	63	72
Rice	3	28	65	4	0	69	77
Sorghum	2	16	35	22	25	44	82
Soybeans	1	42	33	17	7	63	72
Wheat	0	0	0	0	0	0	0
Oats	1	8	13	30	48	26	51
Range and Pasture	0	2	15	30	53	21	76

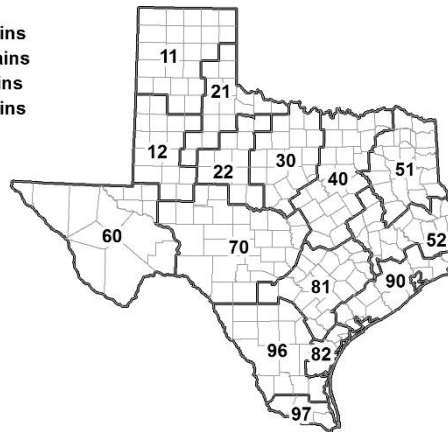
¹ The formula for the condition index is $I = (5V + 25P + 60F + 90G + 110E)/100$ where I = crop condition index and V, P, F, G, E = percentage of crop rated very poor, poor, fair, good, excellent.

Soil Moisture and Days Suitable by District

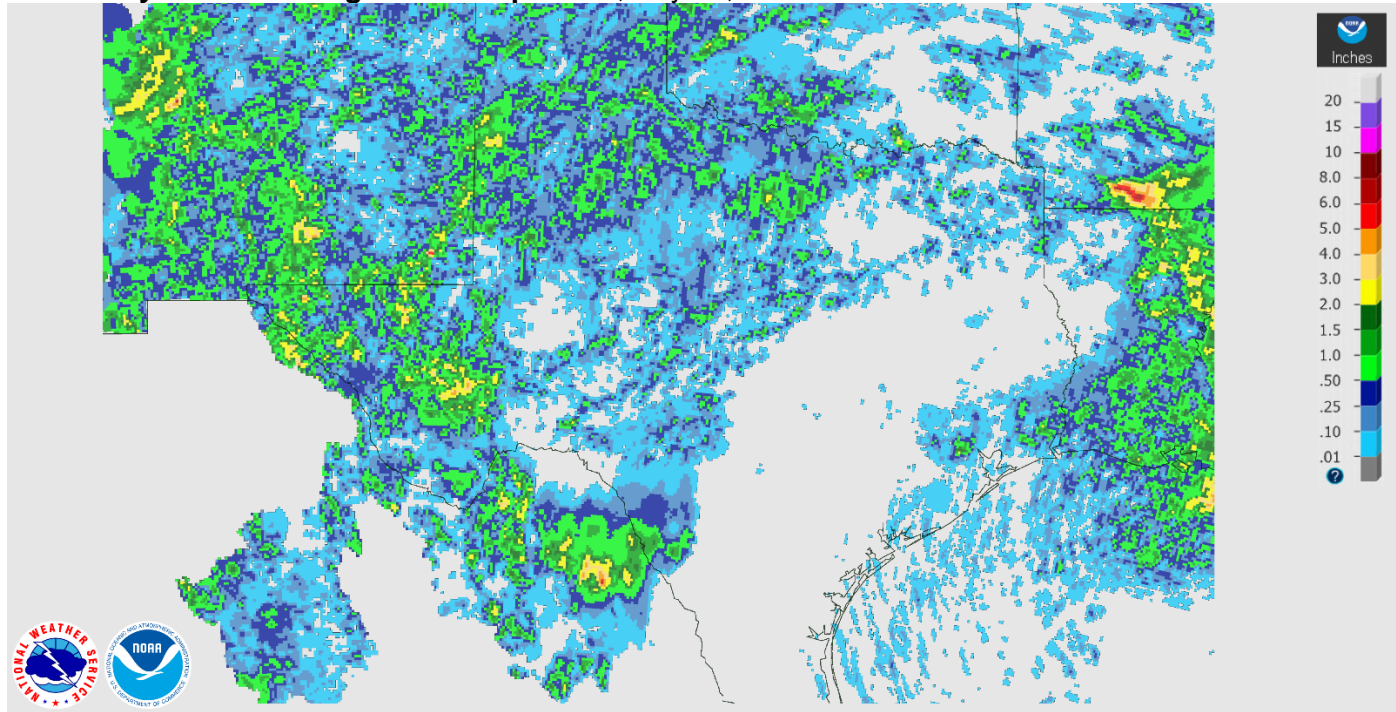
District	Topsoil Moisture Condition by District				Subsoil Moisture Condition by District				Days Suitable for Fieldwork
	Percentage of Acreage				Percentage of Acreage				
	Very Short	Short	Adequate	Surplus	Very Short	Short	Adequate	Surplus	
11	63	30	7	0	62	36	2	0	6.8
12	100	0	0	0	100	0	0	0	7.0
21	38	59	3	0	40	57	3	0	6.3
22	79	20	1	0	79	21	0	0	6.3
30	56	38	6	0	53	41	6	0	5.4
40	73	21	6	0	59	36	5	0	6.8
51	50	36	13	1	44	42	12	2	6.0
52	34	60	6	0	32	61	7	0	7.0
60	21	55	24	0	13	63	24	0	7.0
70	75	16	9	0	73	19	8	0	6.6
81	86	14	0	0	80	16	4	0	6.6
82	84	16	0	0	85	15	0	0	7.0
90	62	28	10	0	25	62	13	0	6.5
96	71	20	9	0	64	27	9	0	6.4
97	62	24	14	0	23	45	32	0	5.4
State	71	24	5	0	65	30	5	0	6.6

Texas Agricultural Districts

- 11 Northern High Plains
- 12 Southern High Plains
- 21 Northern Low Plains
- 22 Southern Low Plains
- 30 Cross Timbers
- 40 Blacklands
- 51 North East
- 52 South East
- 60 Trans-Pecos
- 70 Edwards Plateau
- 81 South Central
- 82 Coastal Bend
- 90 Upper Coast
- 96 South
- 97 Lower Valley



Seven Day Observed Regional Precipitation, July 10, 2022.



Source: National Weather Service, www.nws.noaa.gov.

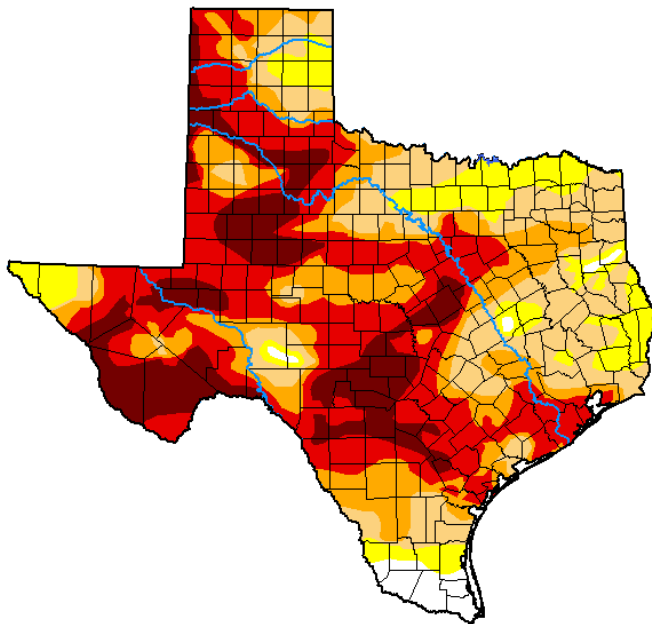
Drought Monitor, Valid July 5, 2022.

**U.S. Drought Monitor
Texas**

July 5, 2022

(Released Thursday, Jul. 7, 2022)

Valid 8 a.m. EDT



Drought Conditions (Percent Area)

	None	D0-D4	D1-D4	D2-D4	D3-D4	D4
Current	2.47	97.53	86.79	66.05	45.91	16.11
Last Week <i>06-28-2022</i>	3.71	96.29	86.39	64.99	43.79	15.82
3 Months Ago <i>04-05-2022</i>	4.95	95.05	84.73	71.45	40.56	9.78
Start of Calendar Year <i>01-04-2022</i>	7.58	92.42	79.83	54.25	16.69	0.00
Start of Water Year <i>09-28-2021</i>	45.57	54.43	7.26	0.27	0.00	0.00
One Year Ago <i>07-06-2021</i>	87.07	12.93	5.98	1.17	0.00	0.00

Intensity:

- None
- D0 Abnormally Dry
- D1 Moderate Drought
- D2 Severe Drought
- D3 Extreme Drought
- D4 Exceptional Drought

The Drought Monitor focuses on broad-scale conditions. Local conditions may vary. For more information on the Drought Monitor, go to <https://droughtmonitor.unl.edu/About.aspx>

Author:

Brad Pugh
CPC/NOAA



droughtmonitor.unl.edu

Source: National Drought Mitigation Center, a partnership with USDA, U.S. Department of Commerce/NOAA, <http://droughtmonitor.unl.edu>.