



Texas Crop Progress and Condition

Southern Plains Regional Field Office
Post Office Box 70 Austin, Texas 78767
(800) 626-3142 · FAX (855) 270-2725 · www.nass.usda.gov/tx

Issue: TX-CW2322

Weekly Summary for June 20 - June 26

Released: June 27, 2022

Most of the state reported hot and dry conditions, little to no rain was reported. However, in areas of the Trans-Pecos, the Cross Timbers, the Southern Low Plains, and the Northern High Plains received up to 2.0 inches of precipitation. There were 6.2 days suitable for fieldwork.

Small Grains: In the Blacklands, wheat harvest has concluded. Wheat harvest continues in the Northern High Plains, harvesting was delayed due to hot and dry weather conditions.

Row Crops: In most areas of the state, cotton is in need of moisture. Corn in the South Central, the Blacklands, and the Northern High Plains has been reported as drying too fast due to heat. Sorghum is being harvested in the Lower Valley, the Coastal Bend, and the Blacklands.

Fruit, Vegetable and Specialty Crops: There is fruit loss in the Blacklands due to excessive heat. Almost all vegetable crops in South Texas have stopped producing due to heat.

Livestock, Range and Pasture: Cattle is being culled and fed on supplemental feed across the Northern High Plains, the Cross Timbers, North East Texas, the Trans-Pecos, and the Edwards Plateau. There has been an increase in grasshoppers in the Cross Timbers and South East Texas. Pasture and range land are becoming stressed in the Southern High Plains, the Southern Low Plains, the Cross Timers, the Blacklands, North East Texas, South East Texas, and the Edwards Plateau due to excessive heat and low moisture. Range and pasture conditions are rated 75 percent, very poor to poor.

Crop Progress

Stage	Percent of Acreage			
	Current Week	Previous Week	Previous Year	5 Year Average
Corn				
Silked	70	61	66	60
Dough	35	19	33	35
Cotton				
Squaring	29	23	28	28
Setting Bolls	12	10	9	10
Peanuts				
Planted	95	91	89	94
Pegging	6	1	4	4
Rice				
Headed	32	17	30	32
Sorghum				
Headed	60	50	61	59
Coloring	27	(NA)	40	40
Soybeans				
Planted	95	88	94	96
Emerged	90	80	89	90
Blooming	40	26	39	40
Sunflowers				
Planted	81	76	82	81
Harvested	7	1	6	15
Winter Wheat				
Harvested	80	72	73	79
Oats				
Harvested	87	82	85	89

(NA) Not available.

Crop Condition

Crop	Percent of Acreage					Index ¹	
	Excellent	Good	Fair	Poor	Very Poor	2022	2021
Corn	5	19	38	30	8	53	86
Cotton	0	17	37	26	20	45	69
Peanuts	5	25	49	17	4	62	70
Rice	10	27	63	0	0	73	84
Sorghum	1	19	38	25	17	48	87
Soybeans	2	32	56	9	1	67	76
Wheat	1	4	12	23	60	21	55
Oats	1	8	13	30	48	26	51
Range and Pasture	0	7	18	32	43	27	64

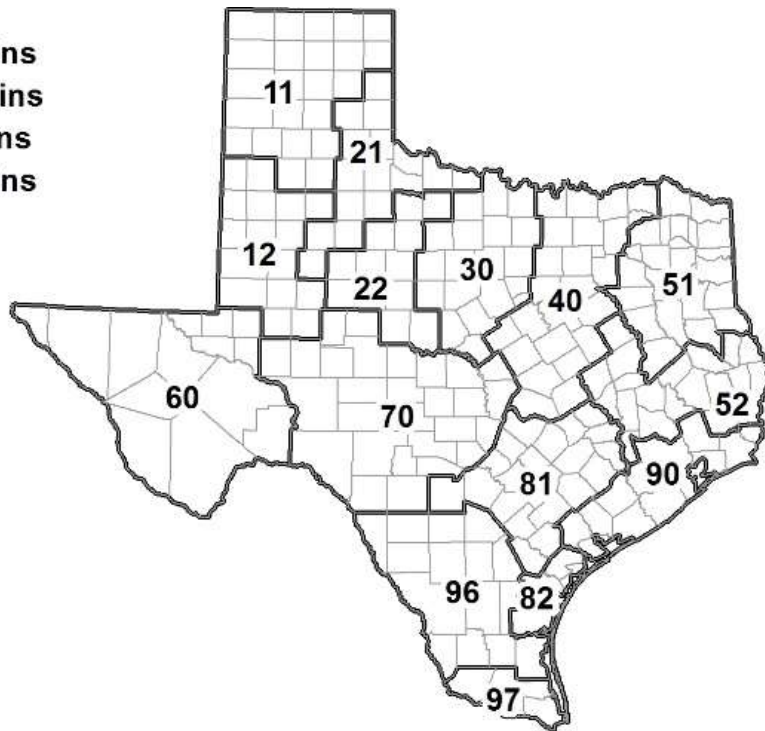
¹ The formula for the condition index is $I = (5V + 25P + 60F + 90G + 110E)/100$ where I = crop condition index and V, P, F, G, E = percentage of crop rated very poor, poor, fair, good, excellent.

Soil Moisture and Days Suitable by District

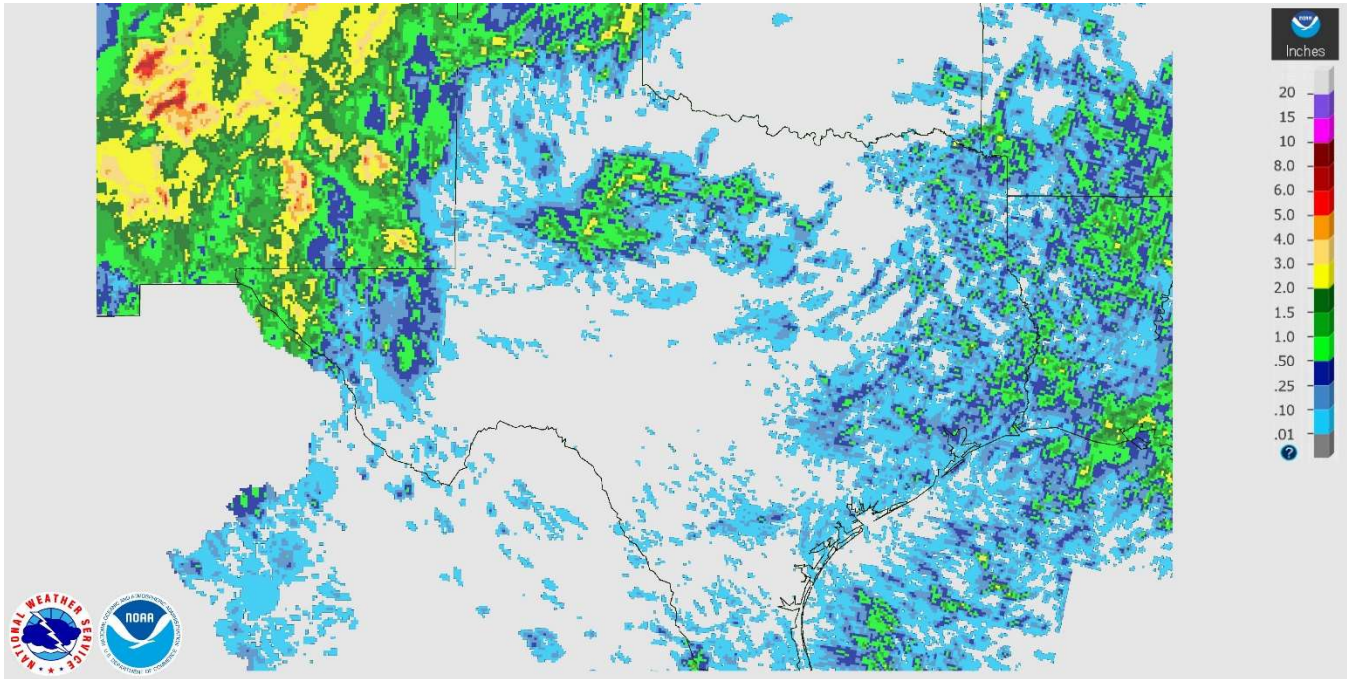
District	Topsoil Moisture Condition by District				Subsoil Moisture Condition by District				Days Suitable for Fieldwork
	Percentage of Acreage				Percentage of Acreage				
	Very Short	Short	Adequate	Surplus	Very Short	Short	Adequate	Surplus	
11	50	49	1	0	53	47	0	0	6.5
12	94	6	0	0	94	6	0	0	5.4
21	18	53	29	0	22	59	19	0	7.0
22	81	19	0	0	80	20	0	0	6.7
30	50	47	3	0	39	50	11	0	5.8
40	51	35	14	0	43	44	13	0	6.3
51	23	58	19	0	11	72	17	0	6.7
52	24	64	12	0	21	63	16	0	6.9
60	43	26	31	0	44	25	31	0	3.8
70	75	22	3	0	69	28	3	0	6.6
81	60	40	0	0	39	55	6	0	6.7
82	90	10	0	0	79	21	0	0	7.0
90	64	28	8	0	25	58	17	0	6.6
96	44	39	17	0	42	40	18	0	5.3
97	38	44	18	0	17	39	44	0	5.4
State	59	34	7	0	54	38	8	0	6.2

Texas Agricultural Districts

- 11 Northern High Plains
- 12 Southern High Plains
- 21 Northern Low Plains
- 22 Southern Low Plains
- 30 Cross Timbers
- 40 Blacklands
- 51 North East
- 52 South East
- 60 Trans-Pecos
- 70 Edwards Plateau
- 81 South Central
- 82 Coastal Bend
- 90 Upper Coast
- 96 South
- 97 Lower Valley

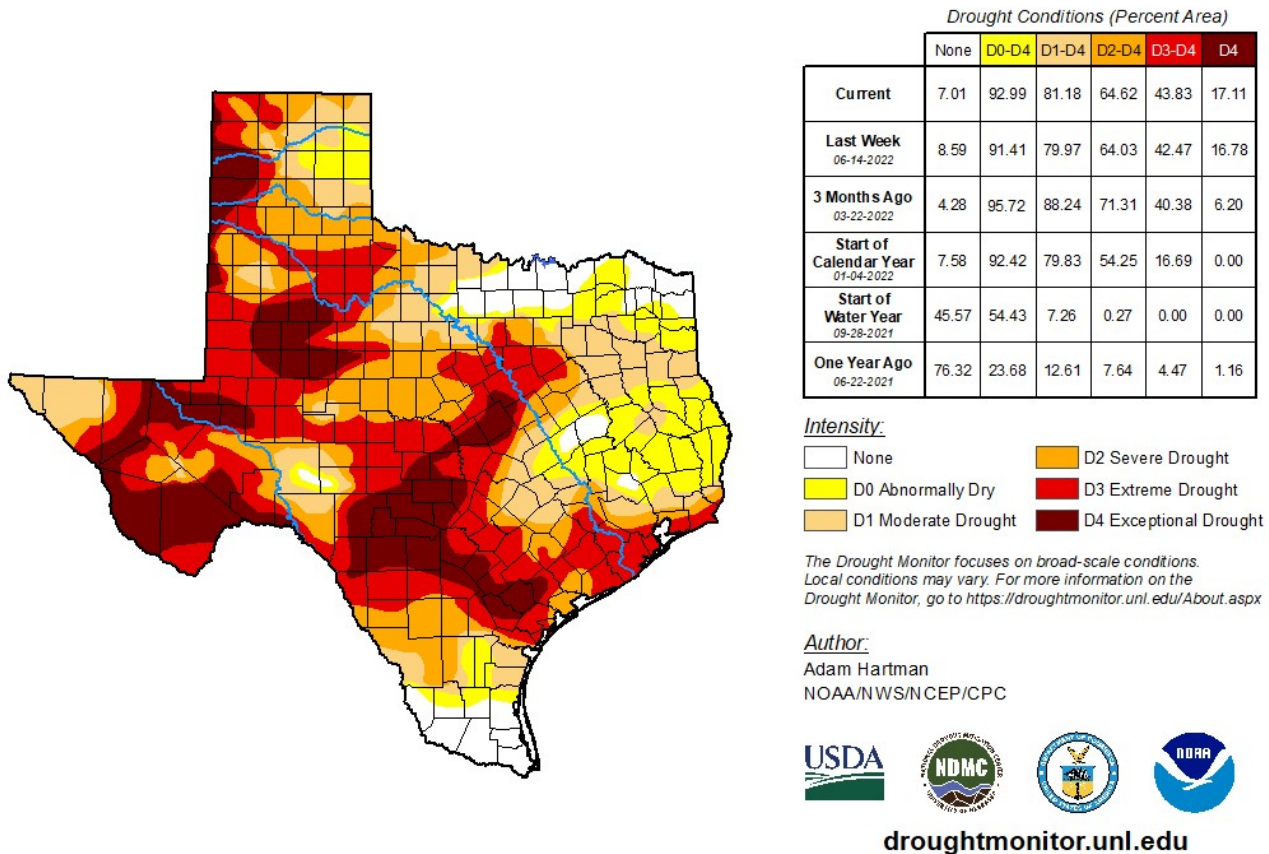


Seven Day Observed Regional Precipitation, June 26, 2022.



Source: National Weather Service, www.nws.noaa.gov

Drought Monitor, Valid June 21, 2022.



Source: National Drought Mitigation Center, a partnership with USDA, U.S. Department of Commerce/NOAA, <http://droughtmonitor.unl.edu>

Texas Crop Progress and Condition (June 2022)

USDA, National Agricultural Statistics Service, Southern Plains Regional Field Office