



## Texas Crop Progress and Condition

Southern Plains Regional Field Office  
Post Office Box 70 Austin, Texas 78767  
(800) 626-3142 · FAX (855) 270-2725 · [www.nass.usda.gov/tx](http://www.nass.usda.gov/tx)

**Issue: TX-CW2222**

**Weekly Summary for June 13 - June 19**

**Released: June 21, 2022**

Most of the state received from trace amounts to upwards of 1.00 inch of precipitation. Isolated areas in the Trans-Pecos and North and South East Texas received up to 3.00 inches. Drought conditions ranged from none to exceptionally dry with the Trans-Pecos, the Edwards Plateau, South Central Texas, and the Northern and Southern Plains being the driest. There was an average of 6.7 days suitable for fieldwork.

**Small Grains:** Some small grain producers in the Blacklands wrapped up their harvest or neared closer towards completion. Winter wheat producers in the Northern High Plains reported varying yields while some producers in the Blacklands grazed out their plantings.

**Row Crops:** Corn and cotton producers in the Northern High Plains continued to irrigate their fields. Due to recent rain and hail activity in Northern High Plains some cotton fields had failed. Cotton planting continued in areas of the Southern Plains, the Edwards Plateau, and the Trans-Pecos. In some areas of the Edwards Plateau, South Central Texas, and the Coastal Bend, row crop yields had struggled to increase due to very dry conditions. Irrigated cotton in the Lower Valley continued to progress.

**Fruit, Vegetable and Specialty Crops:** Citrus and sugarcane producers continued to irrigate in the Lower Valley. Melons continued to progress in areas of the Southern High Plains, the Lower Valley, and South Texas. Pecans continued to progress in the Southern High Plains, the Trans-Pecos, the Edwards Plateau, and South Texas. Some fruit and vegetable producers in the Blacklands reported very good yields.

**Livestock, Range and Pasture:** Supplemental feeding continued throughout the state. In the Blacklands, livestock continued to suffer from flies and parasites due to the hot temperatures. Topsoil and subsoil conditions were very short due to the lack of moisture. Range and pasture conditions are rated 72 percent, very poor to poor.

### Crop Progress

Stage	Percent of Acreage			
	Current Week	Previous Week	Previous Year	5 Year Average
<b>Corn</b>				
Silked	61	59	57	54
Dough	19	5	18	19
<b>Cotton</b>				
Planted	96	89	95	93
Squaring	23	17	19	21
Setting Bolls	10	(NA)	5	6
<b>Peanuts</b>				
Planted	91	84	82	90
<b>Rice</b>				
Headed	17	6	17	15
<b>Sorghum</b>				
Planted	95	90	96	97
Headed	50	42	51	53
<b>Soybeans</b>				
Planted	88	81	89	(NA)
Emerged	80	65	83	84
Blooming	26	13	28	30
<b>Sunflowers</b>				
Planted	76	65	73	75
<b>Winter Wheat</b>				
Harvested	72	53	54	65
<b>Oats</b>				
Harvested	82	67	71	82

### Crop Condition

Crop	Percent of Acreage					Index <sup>1</sup>	
	Excellent	Good	Fair	Poor	Very Poor	2022	2021
Corn	6	26	36	21	11	57	87
Cotton	1	18	41	27	13	49	69
Peanuts	1	20	52	26	1	57	72
Rice	2	23	73	1	1	67	83
Sorghum	1	19	45	21	14	51	88
Soybeans	3	30	50	14	3	64	73
Wheat	1	4	12	23	60	21	55
Oats	1	8	13	30	48	26	51
Range and Pasture	1	6	21	33	39	29	65

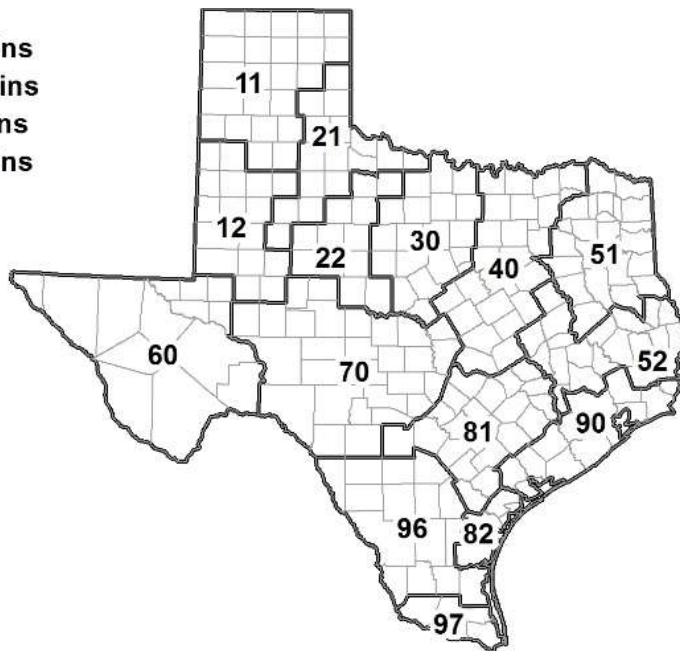
<sup>1</sup> The formula for the condition index is  $I = (5V + 25P + 60F + 90G + 110E)/100$  where I = crop condition index and V, P, F, G, E = percentage of crop rated very poor, poor, fair, good, excellent.

### Soil Moisture and Days Suitable by District

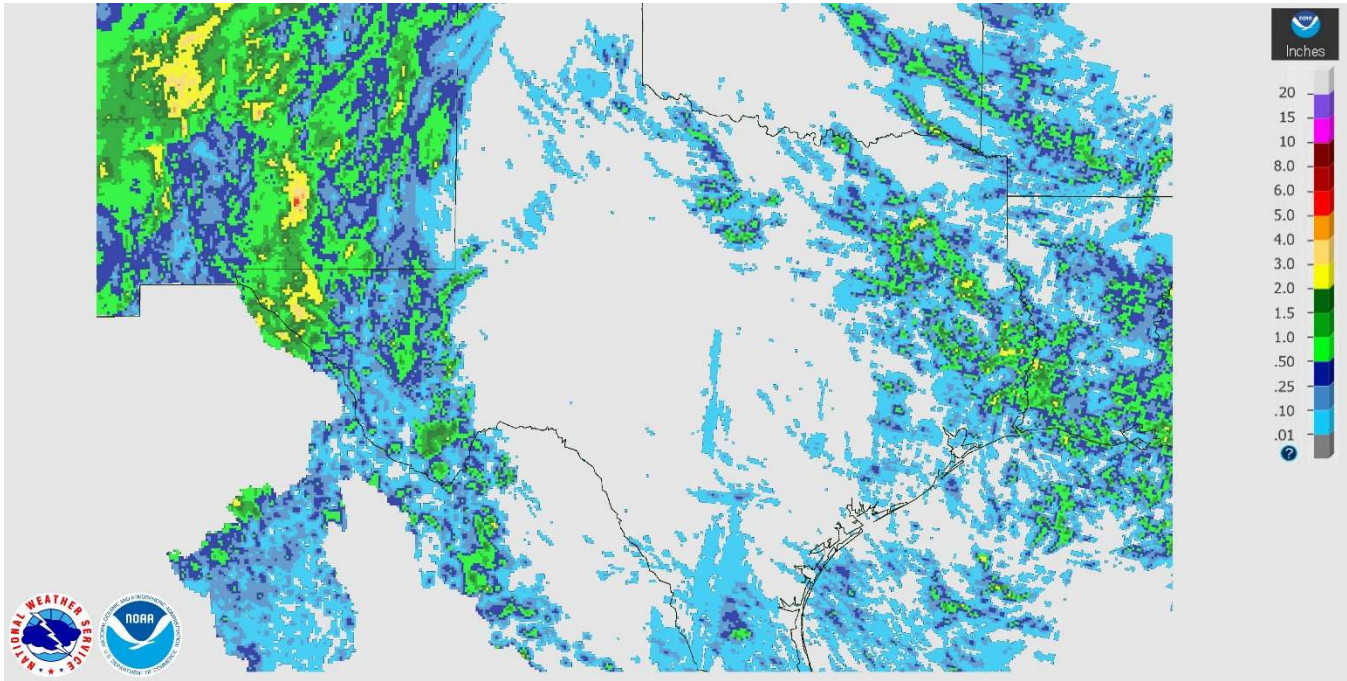
District	Topsoil Moisture Condition by District				Subsoil Moisture Condition by District				Days Suitable for Fieldwork
	Percentage of Acreage				Percentage of Acreage				
	Very Short	Short	Adequate	Surplus	Very Short	Short	Adequate	Surplus	
11	26	64	10	0	34	62	4	0	6.9
12	90	8	2	0	90	6	4	0	6.8
21	21	35	44	0	23	56	21	0	6.8
22	83	17	0	0	81	19	0	0	6.4
30	24	55	21	0	25	48	27	0	6.3
40	46	38	15	1	39	42	19	0	6.8
51	14	64	20	2	18	58	21	3	6.6
52	35	51	14	0	29	48	23	0	7.0
60	47	22	31	0	47	22	31	0	6.2
70	76	16	8	0	62	28	10	0	7.0
81	67	24	9	0	38	47	15	0	6.7
82	85	15	0	0	74	26	0	0	7.0
90	70	22	7	1	23	65	11	1	6.6
96	49	35	16	0	48	29	23	0	7.0
97	30	52	18	0	16	33	51	0	5.4
State	53	35	12	0	49	39	12	0	6.7

### Texas Agricultural Districts

- 11 Northern High Plains
- 12 Southern High Plains
- 21 Northern Low Plains
- 22 Southern Low Plains
- 30 Cross Timbers
- 40 Blacklands
- 51 North East
- 52 South East
- 60 Trans-Pecos
- 70 Edwards Plateau
- 81 South Central
- 82 Coastal Bend
- 90 Upper Coast
- 96 South
- 97 Lower Valley

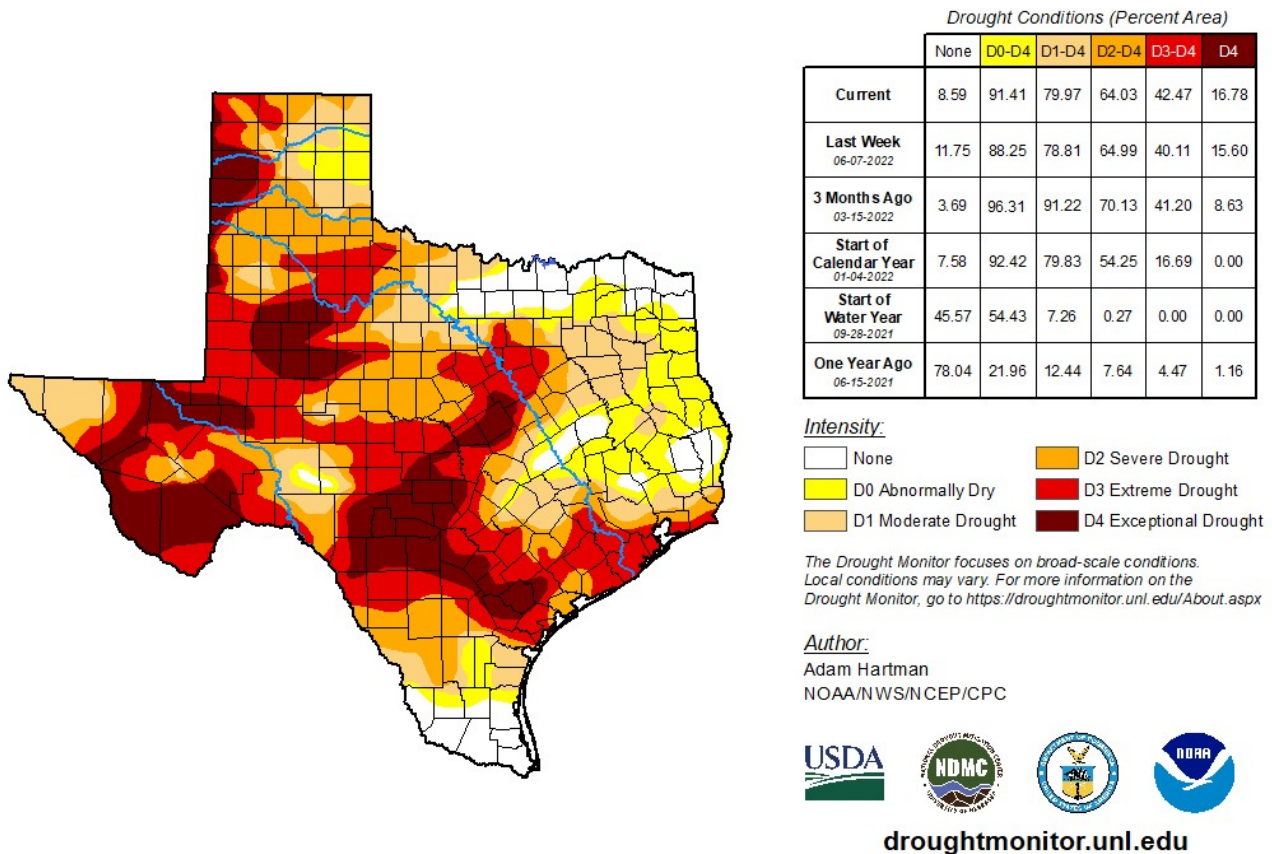


## Seven Day Observed Regional Precipitation, June 19, 2022.



Source: National Weather Service, [www.nws.noaa.gov](http://www.nws.noaa.gov)

## Drought Monitor, Valid June 14, 2022.



Source: National Drought Mitigation Center, a partnership with USDA, U.S. Department of Commerce/NOAA, <http://droughtmonitor.unl.edu>

## Texas Crop Progress and Condition (June 2022)

USDA, National Agricultural Statistics Service, Southern Plains Regional Field Office