



Texas Crop Progress and Condition

Southern Plains Regional Field Office
Post Office Box 70 Austin, Texas 78767
(800) 626-3142 · FAX (855) 270-2725 · www.nass.usda.gov/tx

Issue: TX-CW2022

Weekly Summary for May 30 - June 5

Released: June 6th, 2022

Most of the state received from trace amounts to upwards of 3.00 inches of precipitation. Isolated areas in North East Texas and the Low Plains received up to 6.00 inches. Drought conditions ranged from none to exceptionally dry with the Trans-Pecos, the Edwards Plateau, South Central Texas, and the Northern and Southern Plains being the driest. There was an average of 5.5 days suitable for fieldwork.

Small Grains: Small grain producers continued harvest or awaited maturity in areas throughout the Plains, the Cross Timbers, and the Blacklands. Meanwhile, some winter wheat fields in the Edwards Plateau had been plowed due to poor quality.

Row Crops: Cotton and corn plantings were nearing completion in the Northern High Plains. Irrigated cotton in the Southern High Plains was emerging slowly while the dryland cotton had yet to emerge. Recent rainfall in the Northern Low Plains were reported as beneficial to the replanted cotton fields. Early soybean plantings were doing well in areas of the Blacklands, while corn and cotton needed rain. Cotton producers in the Trans-Pecos prepared for irrigation. Sorghum had emerged in areas of the Edwards Plateau. Rice plantings progressed in the Upper Coast and some producers applied fertilizer. Peanut planting was underway in South Texas.

Fruit, Vegetable and Specialty Crops: Vegetable production in South Texas slowed due to the extreme heat and dry conditions. However, potato producers in South Texas had begun to harvest. Watermelon harvest continued in the Lower Valley. Pecan producers in the Cross Timbers and the Blacklands sprayed their crops for insects.

Livestock, Range and Pasture: Supplemental feeding continued across the state. Goat and lamb producers finished working their kids and lambs in the Edwards Plateau. Topsoil and subsoil conditions were very short due to the lack of moisture. Range and pasture conditions are rated 66 percent, very poor to poor.

Crop Progress

Stage	Percent of Acreage			
	Current Week	Previous Week	Previous Year	5 Year Average
Corn				
Planted	97	94	99	98
Emerged	94	87	90	91
Silked	50	43	49	44
Cotton				
Planted	82	60	59	69
Squaring	15	12	12	13
Peanuts				
Planted	68	61	48	75
Rice				
Emerged	93	89	91	94
Sorghum				
Planted	86	81	88	90
Headed	39	35	39	42
Soybeans				
Planted	72	67	74	83
Emerged	64	57	64	69
Blooming	6	3	5	7
Sunflowers				
Planted	58	49	55	60
Winter Wheat				
Harvested	36	22	20	38
Oats				
Harvested	56	38	21	58

Crop Condition

Crop	Percent of Acreage					Index ¹	
	Excellent	Good	Fair	Poor	Very Poor	2022	2021
Corn	5	27	41	19	8	60	89
Cotton	1	26	51	20	2	60	62
Peanuts	0	12	52	35	1	51	69
Rice	8	36	55	1	0	74	76
Sorghum	2	14	45	25	14	49	85
Soybeans	4	28	59	8	1	67	71
Wheat	1	5	12	23	59	22	58
Oats	1	8	13	30	48	26	56
Range and Pasture	2	11	21	28	38	34	69

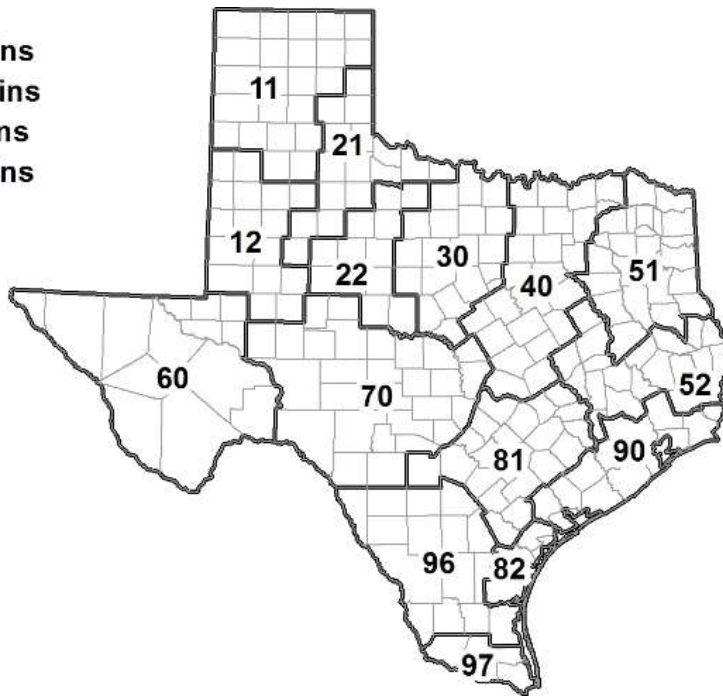
¹ The formula for the condition index is $I = (5V + 25P + 60F + 90G + 110E)/100$ where I = crop condition index and V, P, F, G, E = percentage of crop rated very poor, poor, fair, good, excellent.

Soil Moisture and Days Suitable by District

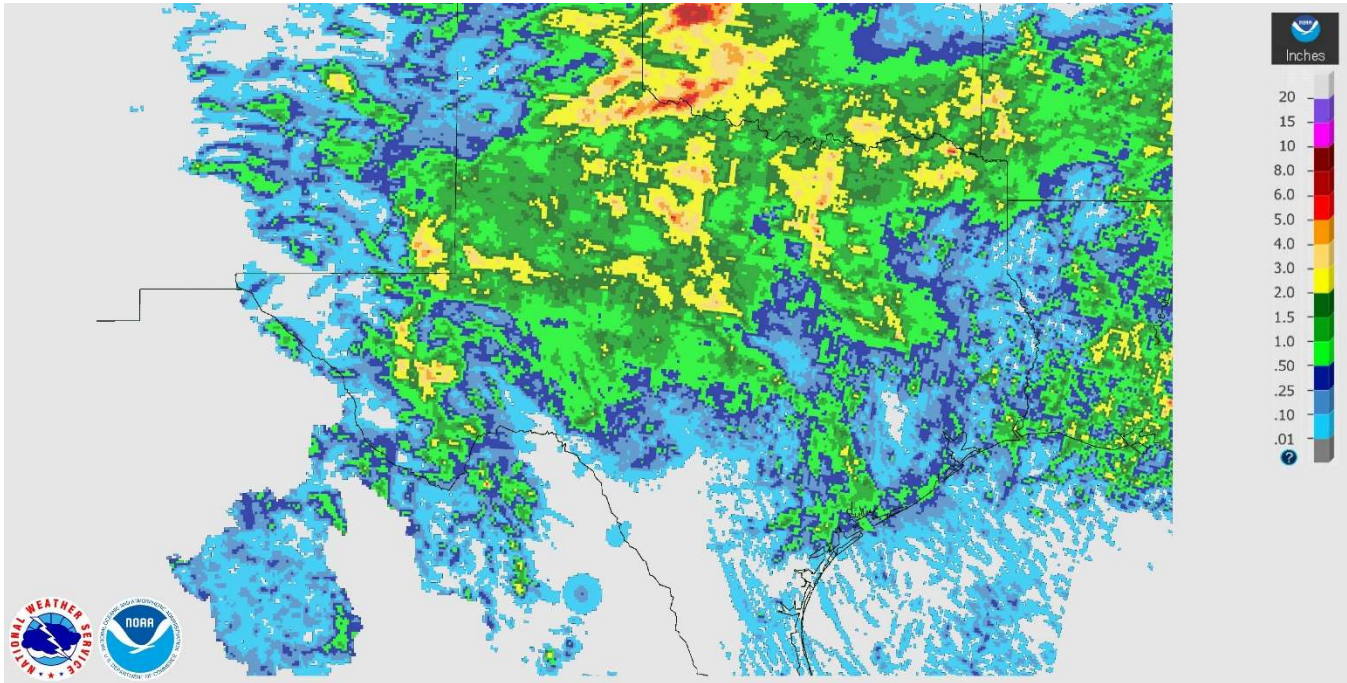
District	Topsoil Moisture Condition by District				Subsoil Moisture Condition by District				Days Suitable for Fieldwork
	Percentage of Acreage				Percentage of Acreage				
	Very Short	Short	Adequate	Surplus	Very Short	Short	Adequate	Surplus	
11	41	44	15	0	55	31	14	0	4.9
12	97	3	0	0	97	3	0	0	6.3
21	17	16	63	4	21	47	32	0	4.6
22	42	32	25	1	66	33	1	0	4.6
30	12	40	43	5	24	26	46	4	4.9
40	15	39	41	5	20	32	43	5	5.6
51	3	31	66	0	4	32	64	0	6.8
52	2	22	71	5	3	26	69	2	6.0
60	48	16	36	0	47	17	36	0	6.3
70	36	33	31	0	53	33	14	0	5.3
81	45	46	9	0	36	45	19	0	6.1
82	47	53	0	0	47	49	4	0	6.2
90	52	28	20	0	17	61	22	0	6.5
96	49	20	31	0	49	15	36	0	5.0
97	14	26	57	3	12	25	60	3	5.4
State	43	30	26	1	49	28	22	1	5.5

Texas Agricultural Districts

- 11 Northern High Plains
- 12 Southern High Plains
- 21 Northern Low Plains
- 22 Southern Low Plains
- 30 Cross Timbers
- 40 Blacklands
- 51 North East
- 52 South East
- 60 Trans-Pecos
- 70 Edwards Plateau
- 81 South Central
- 82 Coastal Bend
- 90 Upper Coast
- 96 South
- 97 Lower Valley

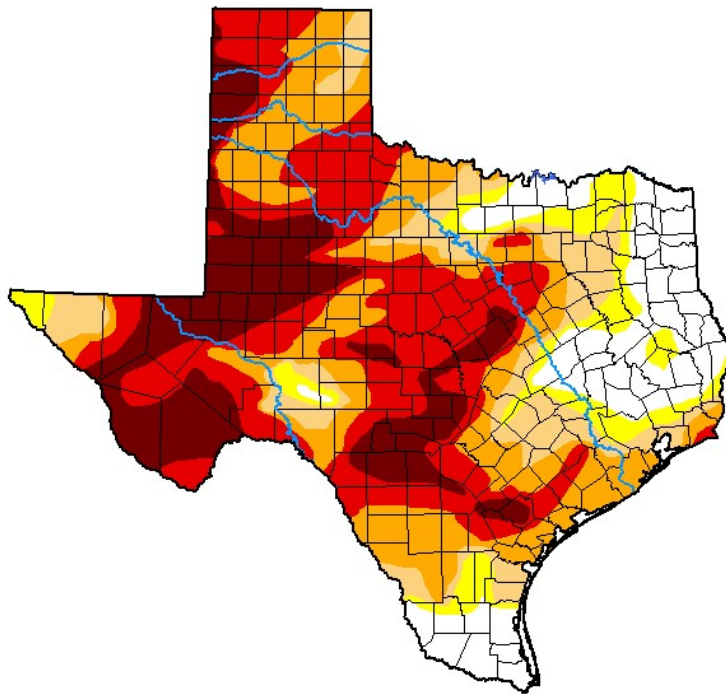


Seven Day Observed Regional Precipitation, June 5, 2022.



Source: National Weather Service, www.nws.noaa.gov

Drought Monitor, Valid May 31, 2022.



Drought Conditions (Percent Area)

	None	D0-D4	D1-D4	D2-D4	D3-D4	D4
Current	14.11	85.89	78.44	66.35	44.07	17.91
Last Week 05-24-2022	12.92	87.08	79.11	66.94	46.05	22.08
3 Months Ago 03-01-2022	6.66	93.34	80.71	56.71	24.47	0.00
Start of Calendar Year 01-04-2022	7.58	92.42	79.83	54.25	16.69	0.00
Start of Water Year 09-28-2021	45.57	54.43	7.26	0.27	0.00	0.00
One Year Ago 06-01-2021	69.83	30.17	19.48	10.82	6.44	2.51

Intensity:

- None
- D0 Abnormally Dry
- D1 Moderate Drought
- D2 Severe Drought
- D3 Extreme Drought
- D4 Exceptional Drought

The Drought Monitor focuses on broad-scale conditions. Local conditions may vary. For more information on the Drought Monitor, go to <https://droughtmonitor.unl.edu/About.aspx>

Author:

Curtis Riganti
National Drought Mitigation Center



droughtmonitor.unl.edu

Source: National Drought Mitigation Center, a partnership with USDA, U.S. Department of Commerce/NOAA, <http://droughtmonitor.unl.edu>

Texas Crop Progress and Condition (June 2022)

USDA, National Agricultural Statistics Service, Southern Plains Regional Field Office