



# Texas Crop Progress and Condition

Southern Plains Regional Field Office  
Post Office Box 70 Austin, Texas 78767  
(800) 626-3142 · FAX (855) 270-2725 · www.nass.usda.gov/tx

Issue: TX-CW1622

Weekly Summary for May 2 - May 8

Released: May 9<sup>th</sup>, 2022

Much of the state received from trace amounts to upwards of 3.00 inches of precipitation. Isolated areas in the Southern Low Plains and North East Texas received up to 6.00 inches. Drought conditions ranged from none to exceptionally dry with the Trans-Pecos, Northern, and Southern Plains being the driest. There was an average of 5.8 days suitable for fieldwork.

**Small Grains:** Winter wheat producers need rain to improve plantings in the Northern and Southern High Plains. Rainfall received last week improved the standing wheat in areas of South East Texas, the Blacklands, and the Cross Timbers. Irrigated wheat condition continued to improve in some areas of the Edwards Plateau.

**Row Crops:** Drought conditions in the Northern High Plains are causing some cotton producers to reevaluate the number of acres they plan to plant to irrigated acres. Cotton producers in the Northern and Southern Low Plains and the Edwards Plateau awaited moisture to begin planting. In the Trans-Pecos, some cotton fields were damaged by hail. Some corn producers in the Blacklands and South Central Texas experienced good crop progress after the recent rainfalls. Rice planting continued in some areas of the Upper Coast, while organic rice is expected to be planted sometime later.

**Fruit, Vegetable and Specialty Crops:** In South Texas and the Lower Valley melons continued to progress. Pecan orchards progressed slowly in the Cross Timbers while producers in South Central Texas applied pesticides.

**Livestock, Range and Pasture:** Supplemental feeding continued across the state. Flies continued to burden livestock and ruined some winter wheat acres in areas of the Blacklands. Feral hogs continued to be nuisance to some producers in North East Texas and the Blacklands. Topsoil and subsoil conditions were very short due to the lack of moisture. Range and pasture conditions are rated 73 percent, very poor to poor.

### Crop Progress

Stage	Percent of Acreage			
	Current Week	Previous Week	Previous Year	5 Year Average
<b>Corn</b>				
Planted	81	74	75	77
Emerged	63	62	58	63
<b>Cotton</b>				
Planted	22	20	24	23
<b>Peanuts</b>				
Planted	5	1	7	13
<b>Rice</b>				
Planted	88	82	92	87
Emerged	76	68	76	78
<b>Sorghum</b>				
Planted	70	66	68	75
Headed	11	4	18	11
<b>Soybeans</b>				
Planted	54	45	44	52
Emerged	28	12	19	NA
<b>Winter Wheat</b>				
Headed	76	66	74	80
<b>Oats</b>				
Headed	92	84	94	95

### Crop Condition

Crop	Percent of Acreage					Index <sup>1</sup>	
	Excellent	Good	Fair	Poor	Very Poor	2022	2021
Corn	6	24	56	9	5	64	84
Wheat	0	7	16	18	59	23	58
Oats	0	6	14	24	56	23	59
Range and Pasture	2	9	16	26	47	29	48

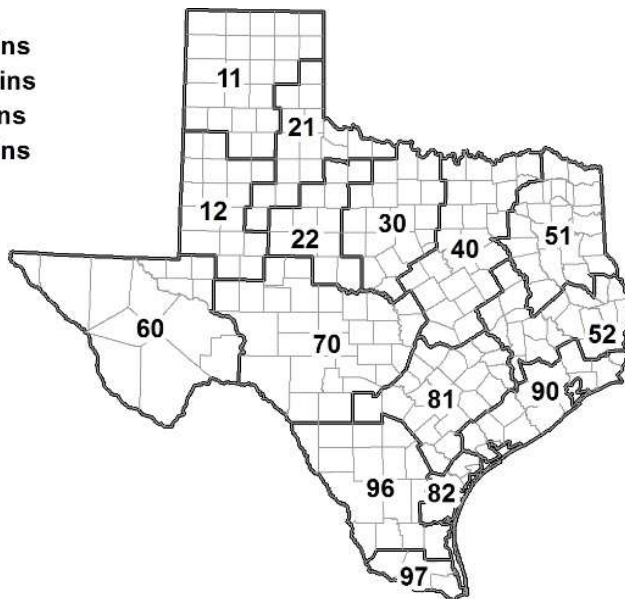
<sup>1</sup> The formula for the condition index is  $I = (5V + 25P + 60F + 90G + 110E)/100$  where I = crop condition index and V, P, F, G, E = percentage of crop rated very poor, poor, fair, good, excellent.

### Soil Moisture and Days Suitable by District

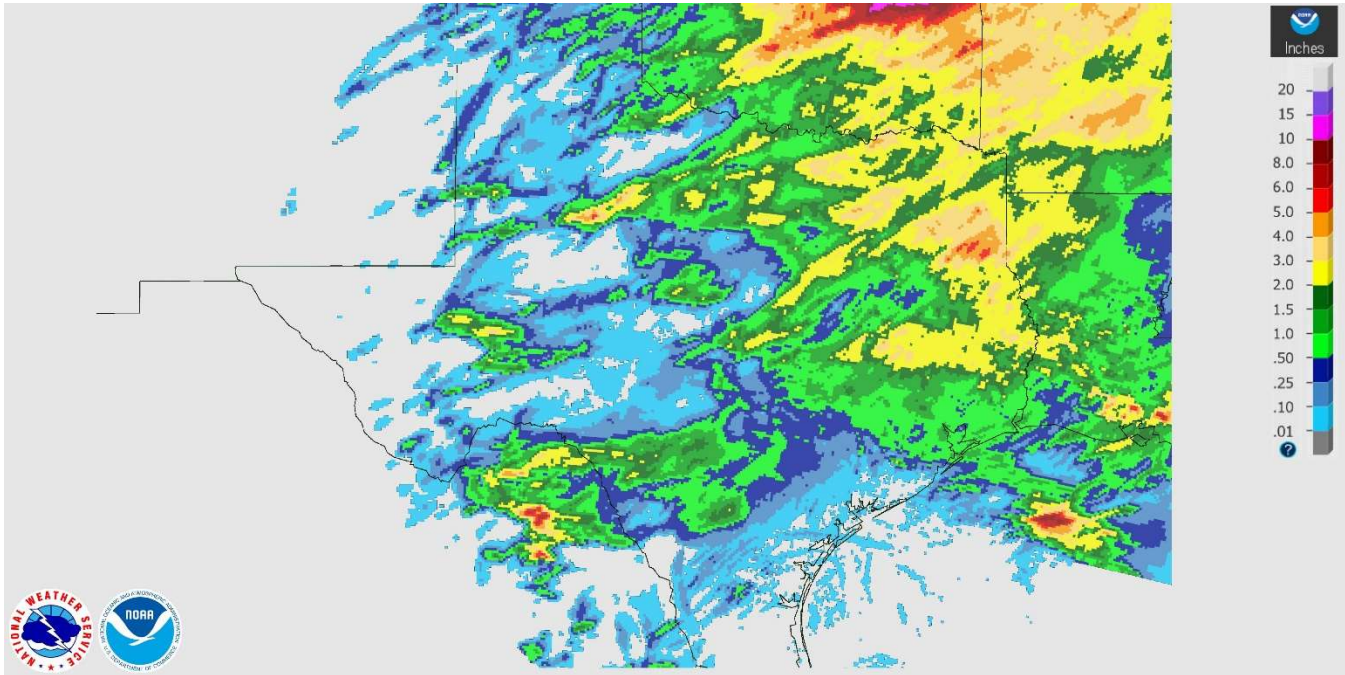
District	Topsoil Moisture Condition by District				Subsoil Moisture Condition by District				Days Suitable for Fieldwork
	Percentage of Acreage				Percentage of Acreage				
	Very Short	Short	Adequate	Surplus	Very Short	Short	Adequate	Surplus	
11	90	10	0	0	90	10	0	0	6.2
12	91	9	0	0	83	17	0	0	6.3
21	45	55	0	0	48	52	0	0	5.5
22	65	33	2	0	71	25	4	0	5.7
30	29	40	31	0	27	34	39	0	5.7
40	17	30	49	4	19	22	46	13	3.8
51	0	41	59	0	1	34	64	1	6.5
52	1	16	70	13	1	27	65	7	5.2
60	46	22	32	0	46	22	32	0	4.4
70	81	17	2	0	78	13	9	0	6.5
81	13	41	46	0	17	48	35	0	6.2
82	56	40	4	0	61	39	0	0	7.0
90	20	43	34	3	20	51	28	1	6.1
96	49	33	18	0	50	29	21	0	6.2
97	25	40	35	0	33	37	30	0	6.0
State	55	27	17	1	56	25	17	2	5.8

### Texas Agricultural Districts

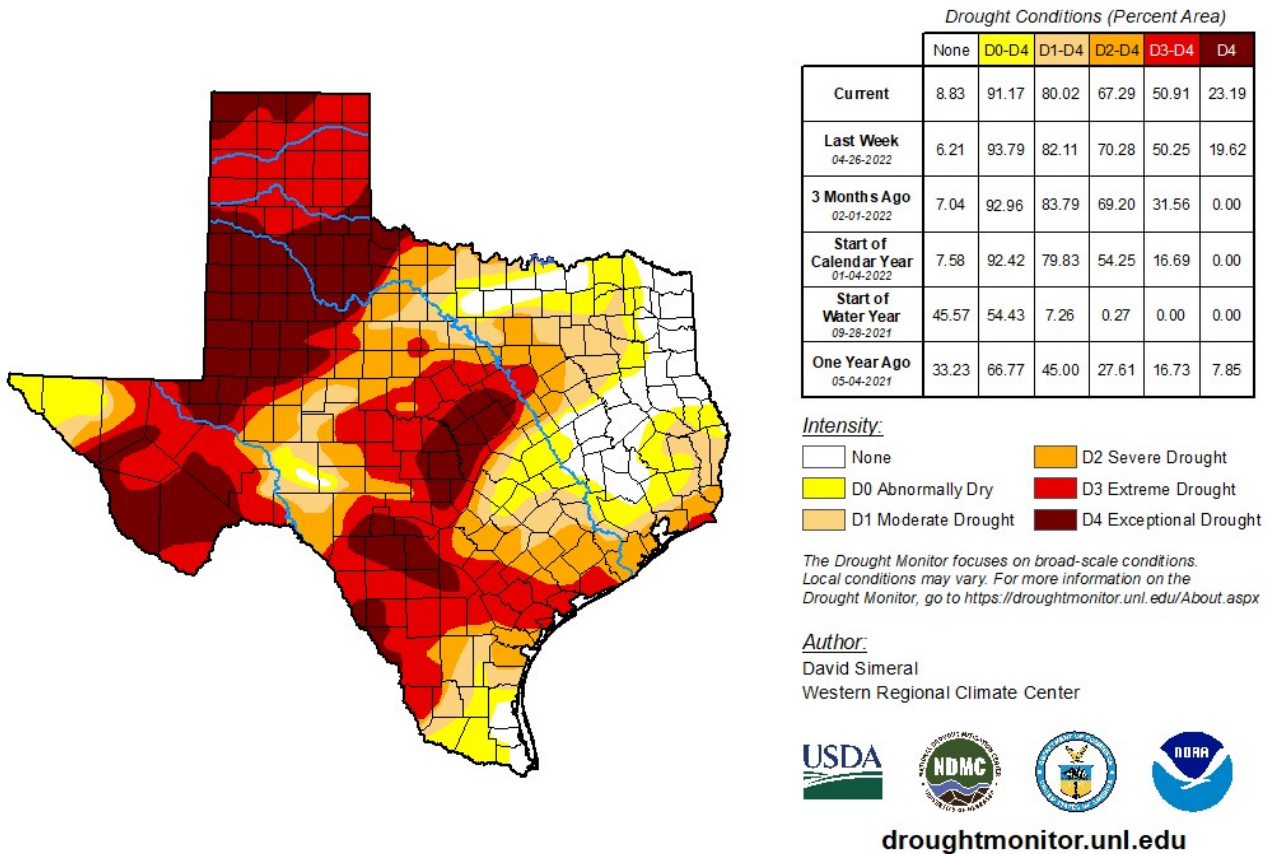
- 11 Northern High Plains
- 12 Southern High Plains
- 21 Northern Low Plains
- 22 Southern Low Plains
- 30 Cross Timbers
- 40 Blacklands
- 51 North East
- 52 South East
- 60 Trans-Pecos
- 70 Edwards Plateau
- 81 South Central
- 82 Coastal Bend
- 90 Upper Coast
- 96 South
- 97 Lower Valley



## Seven Day Observed Regional Precipitation, May 8, 2022.



## Drought Monitor, Valid May 3, 2022.



Source: National Drought Mitigation Center, a partnership with USDA, U.S. Department of Commerce/NOAA, <http://droughtmonitor.unl.edu>