

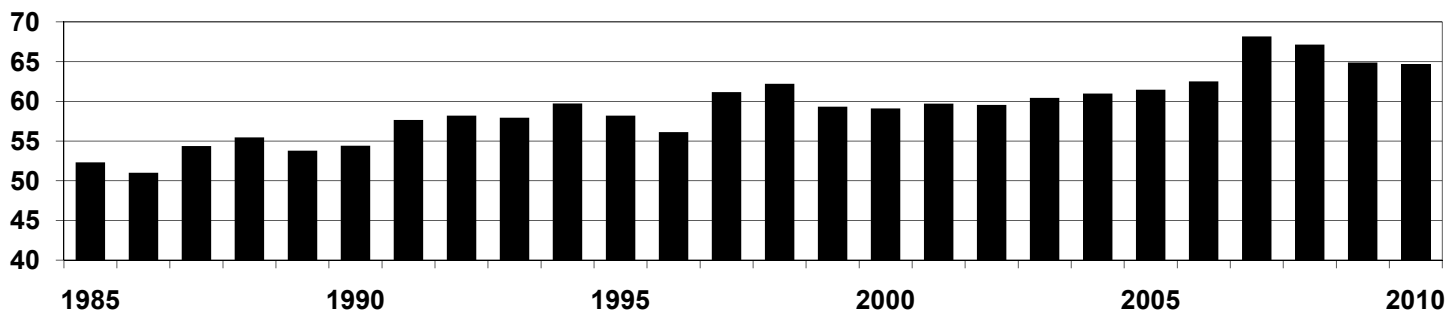
HOG INVENTORY, UNITED STATES, 2006-2011

YEAR AND MONTH	ALL HOGS & PIGS	KEPT FOR BREEDING	MARKET	MARKET HOGS & PIGS BY WEIGHT GROUPS 1/			
				UNDER 50 LBS.	50-119 LBS.	120-179 LBS.	180 LBS. & OVER
	1,000 HEAD	1,000 HEAD	1,000 HEAD	1,000 HEAD	1,000 HEAD	1,000 HEAD	1,000 HEAD
2006							
MAR 1	60,340	6,045	54,295	19,986	13,005	11,432	9,873
JUN 1	61,701	6,080	55,621	20,806	13,691	11,483	9,642
SEP 1	62,928	6,099	56,829	20,706	14,230	11,683	10,211
DEC 1	62,516	6,116	56,399	20,460	13,927	11,274	10,738
2007							
MAR 1	61,896	6,149	55,746	20,379	13,355	11,678	10,334
JUN 1	63,947	6,169	57,777	21,748	14,320	11,789	9,920
SEP 1	67,275	6,208	61,066	22,648	15,261	12,530	10,627
DEC 1	68,177	6,233	61,944	22,545	15,173	12,658	11,569
2008 1/							
MAR 1	67,218	6,200	61,018	20,277	16,350	13,193	11,199
JUN 1	67,400	6,131	61,269	19,807	17,711	12,892	10,860
SEP 1	68,196	6,061	62,135	20,643	17,437	12,855	11,201
DEC 1	67,148	6,062	61,087	19,428	17,396	12,731	11,533
2009							
MAR 1	65,819	5,992	59,828	19,809	16,426	12,732	10,862
JUN 1	66,809	5,968	60,842	19,554	17,838	12,604	10,847
SEP 1	66,716	5,875	60,842	19,758	17,148	12,684	11,253
DEC 1	64,887	5,850	59,037	18,705	16,782	12,299	11,252
2010							
MAR 1	63,568	5,760	57,808	18,767	15,993	12,307	10,742
JUN 1	64,650	5,788	58,862	19,354	16,902	12,029	10,578
SEP 1	65,971	5,770	60,201	19,613	17,395	12,674	10,520
DEC 1	64,625	5,778	58,847	18,564	16,519	12,233	11,531
2011							
MAR 1	63,964	5,788	58,176	18,898	16,225	12,309	10,744

1/ FROM 2008 ON, THE FIRST TWO MARKET WEIGHT GROUPS CHANGED FROM UNDER 60 LBS. TO UNDER 50 LBS., AND FROM 60-119 LBS. TO 50-119 LBS.

HOG INVENTORY, UNITED STATES, DECEMBER 1, 1985-2010

MIL. HEAD



HOGS AND PIGS, PRODUCTION, DISPOSITION, AND INCOME, UNITED STATES, 2006-2010

YEAR	NUMBER ON HAND DECEMBER 1 1/	PIG CROP	INSHIPMENTS 2/	MARKETINGS	FARM SLAUGHTER	DEATHS	NUMBER ON HAND DECEMBER 1
	1,000 HEAD	1,000 HEAD	1,000 HEAD	1,000 HEAD	1,000 HEAD	1,000 HEAD	1,000 HEAD
2006	61,463	105,633	36,323	132,384	105	8,414	62,516
2007	62,516	112,874	39,433	137,519	106	9,021	68,177
2008	68,177	115,030	42,121	148,986	106	9,086	67,148
2009	67,148	114,542	42,317	150,107	114	8,900	64,887
2010	64,887	113,348	39,383	144,259	107	8,627	64,625

1/ PRECEDING YEAR. 2/ LIVESTOCK SHIPPED INTO STATES FOR FEEDING OR BREEDING. EXCLUDES ANIMALS BROUGHT IN FOR IMMEDIATE SLAUGHTER.

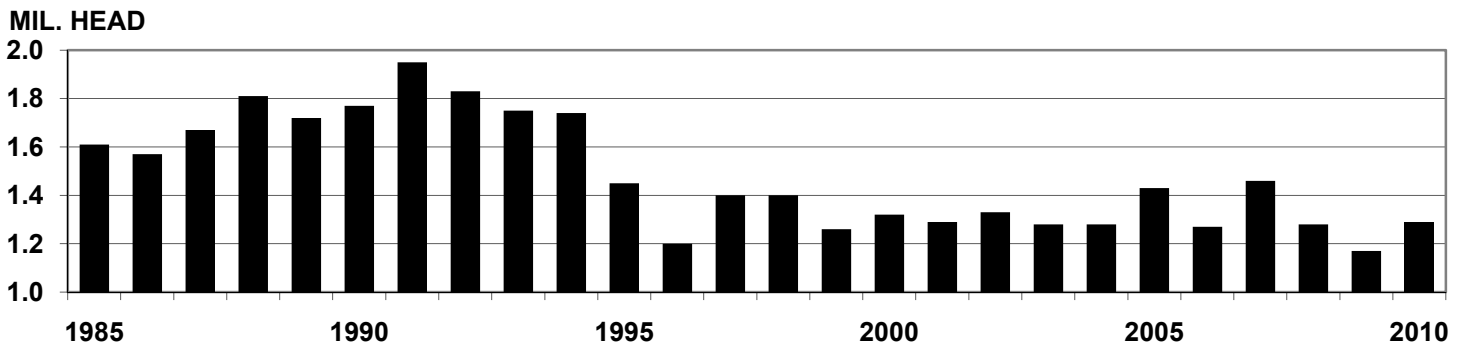
YEAR	PRODUCTION	MARKETINGS	AVERAGE PRICE PER 100 LBS.	CASH RECEIPTS	VALUE OF HOME CONSUMPTION	GROSS INCOME
	1,000 POUNDS	1,000 POUNDS	DOLLARS	1,000 DOLLARS	1,000 DOLLARS	1,000 DOLLARS
2006	28,182,382	29,210,174	46.00	14,105,864	31,344	14,137,208
2007	29,606,420	30,221,861	46.60	14,750,490	32,148	14,782,638
2008	31,410,795	32,609,768	47.00	16,050,481	33,526	16,084,007
2009	31,359,308	32,938,130	41.60	14,674,347	31,121	14,705,468
2010	30,391,490	31,407,269	54.10	17,939,128	38,330	17,977,458

HOG INVENTORY, SOUTH DAKOTA, 2006-2011

YEAR AND MONTH	ALL HOGS AND PIGS	KEPT FOR BREEDING	MARKET	MARKET HOGS & PIGS BY WEIGHT GROUPS 1/			
				UNDER 50 LBS.	50-119 LBS.	120-179 LBS.	180 LBS. & OVER
	1,000 HEAD	1,000 HEAD	1,000 HEAD	1,000 HEAD	1,000 HEAD	1,000 HEAD	1,000 HEAD
2006							
MAR 1	1,380	155	1,225	445	280	260	240
JUN 1	1,360	160	1,200	455	275	240	230
SEP 1	1,380	150	1,230	455	285	255	235
DEC 1	1,270	140	1,130	415	260	220	235
2007							
MAR 1	1,280	135	1,145	415	260	245	225
JUN 1	1,290	145	1,145	425	270	240	210
SEP 1	1,380	155	1,225	425	290	270	240
DEC 1	1,460	165	1,295	465	285	295	250
2008 1/							
MAR 1	1,470	160	1,310	445	320	280	265
JUN 1	1,430	150	1,280	430	355	255	240
SEP 1	1,360	150	1,210	415	325	240	230
DEC 1	1,280	155	1,125	390	270	240	225
2009							
MAR 1	1,310	150	1,160	410	290	245	215
JUN 1	1,290	155	1,135	390	305	225	215
SEP 1	1,280	150	1,130	370	300	230	230
DEC 1	1,190	145	1,045	335	280	220	210
2010							
MAR 1	1,180	150	1,030	350	260	215	205
JUN 1	1,230	160	1,070	390	305	200	175
SEP 1	1,250	160	1,090	385	290	215	200
DEC 1	1,290	170	1,120	380	285	220	235
2011							
MAR 1	1,310	175	1,135	390	310	230	205

1/ FROM 2008 ON, THE FIRST TWO MARKET WEIGHT GROUPS CHANGED FROM UNDER 60 LBS. TO UNDER 50 LBS., AND FROM 60-119 LBS. TO 50-119 LBS.

HOG INVENTORY, SOUTH DAKOTA, DECEMBER 1, 1985-2010



HOGS AND PIGS, PRODUCTION, DISPOSITION, AND INCOME, SOUTH DAKOTA, 2006-2010

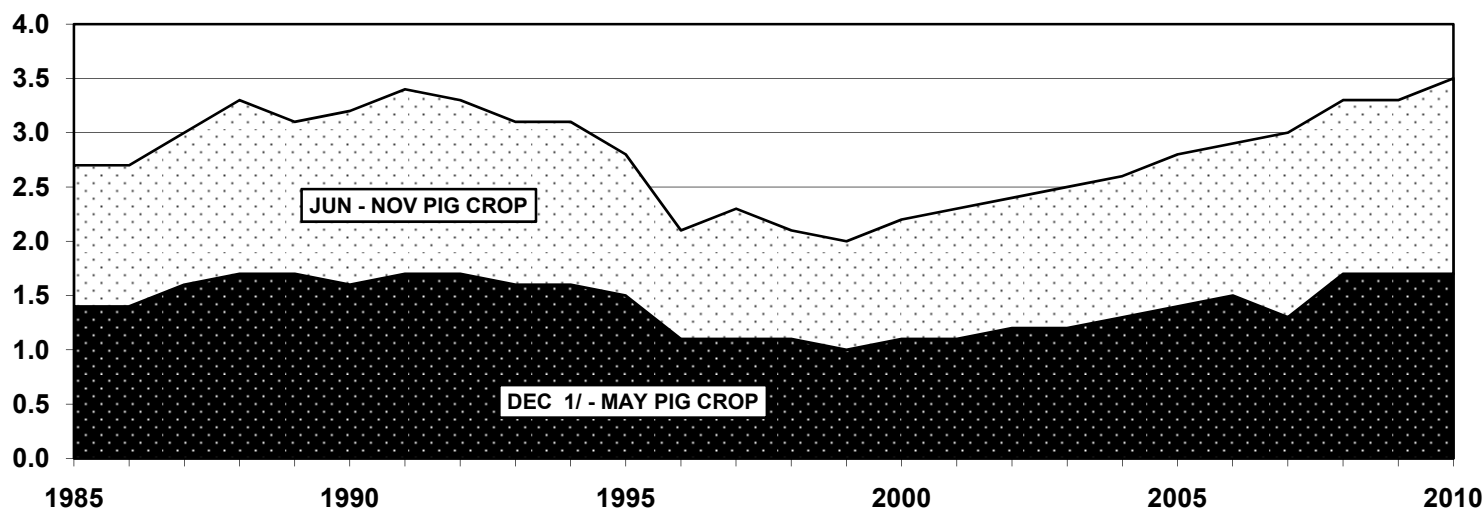
YEAR	NUMBER ON HAND DECEMBER 1 1/	PIG CROP	INSHIPMENTS 2/	MARKETINGS	FARM SLAUGHTER	DEATHS	NUMBER ON HAND DECEMBER 1
	1,000 HEAD	1,000 HEAD	1,000 HEAD	1,000 HEAD	1,000 HEAD	1,000 HEAD	1,000 HEAD
2006	1,430	2,904	984	3,891	2.5	155	1,270
2007	1,270	2,991	1,016	3,678	2.0	137	1,460
2008	1,460	3,297	951	4,295	2.0	131	1,280
2009	1,280	3,315	743	4,030	2.0	116	1,190
2010	1,190	3,494	752	4,029	2.0	115	1,290

1/ PRECEDING YEAR. 2/ LIVESTOCK SHIPPED INTO STATE FOR FEEDING OR BREEDING. EXCLUDES ANIMALS BROUGHT IN FOR IMMEDIATE SLAUGHTER.

YEAR	PRODUCTION	MARKETINGS	AVERAGE PRICE PER 100 LBS.	CASH RECEIPTS	VALUE OF HOME CONSUMPTION	GROSS INCOME
	1,000 POUNDS	1,000 POUNDS	DOLLARS	1,000 DOLLARS	1,000 DOLLARS	1,000 DOLLARS
2006	721,462	780,282	46.20	406,994	1,665	408,659
2007	686,072	702,950	46.70	359,194	1,574	360,768
2008	739,054	798,864	46.80	399,208	1,684	400,892
2009	671,593	719,240	41.70	334,138	1,190	335,328
2010	738,525	760,140	54.50	455,370	1,383	456,753

PIG CROP, SOUTH DAKOTA, 1985-2010

MIL. HEAD



1/ PRECEDING YEAR.

SOWS FARROWED, PIGS PER LITTER, AND PIG CROP, SOUTH DAKOTA, 2008-2010

QUARTER	2008			2009			2010		
	SOWS FARROWED	PIGS PER LITTER	PIG CROP	SOWS FARROWED	PIGS PER LITTER	PIG CROP	SOWS FARROWED	PIGS PER LITTER	PIG CROP
	1,000 HEAD	NUMBER	1,000 HEAD	NUMBER	1,000 HEAD	NUMBER	1,000 HEAD	NUMBER	1,000 HEAD
DEC 1/ - FEB	88	9.60	845	83	9.85	818	79	10.20	806
MAR - MAY	85	9.70	825	86	10.10	869	86	10.30	886
JUN - AUG	82	9.80	804	82	10.00	820	88	10.30	906
SEP - NOV	84	9.80	823	80	10.10	808	87	10.30	896
TOTAL	339	9.73	3,297	331	10.02	3,315	340	10.28	3,494

1/ PRECEDING YEAR.

HOG SLAUGHTER, NUMBER AND AVERAGE LIVEWEIGHT, SOUTH DAKOTA, 2006-2010 1/

YEAR	JAN	FEB	MAR	APR	MAY	JUN	JUL	AUG	SEP	OCT	NOV	DEC	TOTAL
1,000 HEAD													
2006	420.7	396.7	377.0	324.9	351.8	314.6	325.0	347.6	362.1	384.2	389.9	363.5	4,358.1
2007	360.6	321.0	391.4	360.8	363.8	351.4	364.1	454.6	413.9	506.4	474.5	441.8	4,804.3
2008	490.8	386.4	416.5	423.7	341.5	372.7	358.0	343.8	394.0	459.8	371.5	403.3	4,762.0
2009	466.3	408.3	457.6	365.5	310.3	331.0	259.5	344.3	360.4	351.6	339.6	361.7	4,356.1
2010	337.8	318.1	408.6	361.3	311.2	376.1	329.6	377.5	390.5	402.3	445.8	433.2	4,492.1
POUNDS													
2006	263	263	262	263	262	259	256	254	259	259	262	265	261
2007	267	261	260	257	255	254	252	252	254	256	259	259	257
2008	258	256	256	254	255	255	252	250	253	257	260	261	256
2009	262	261	261	262	261	259	257	260	259	262	262	262	261
2010	263	261	264	265	263	264	262	260	262	266	268	267	264

1/ INCLUDES SLAUGHTER IN FEDERALLY INSPECTED AND IN OTHER SLAUGHTER PLANTS, BUT EXCLUDES ANIMALS SLAUGHTERED ON FARMS.