

**CROP PRICES RECEIVED, MARKETING YEAR AVERAGE,  
SOUTH DAKOTA AND UNITED STATES, 2001-2005 1/**

CROP	UNIT	2001	2002	2003	2004	2005 2/
----- DOLLARS -----						
<b>SOUTH DAKOTA</b>						
WHEAT, ALL	BU.	2.78	3.81	3.46	3.37	3.60
CORN FOR GRAIN	BU.	1.75	2.17	2.28	1.82	1.70
SORGHUM FOR GRAIN	CWT.	3.06	3.90	4.00	3.30	3.00
OATS	BU.	1.67	1.99	1.43	1.49	1.50
BARLEY	BU.	2.00	2.51	2.37	2.02	2.00
RYE	BU.	2.50	3.35	2.25	2.90	NA
FLAXSEED	BU.	3.81	5.63	5.54	9.74	5.50
SOYBEANS	BU.	4.13	5.33	6.96	5.58	5.30
HAY, ALL	TON	65.50	78.00	60.50	62.50	61.50
SUNFLOWER, ALL	CWT.	9.18	12.10	11.40	13.10	10.60
PROSO MILLET	BU.	2.10	7.05	3.30	2.90	3.70
DRY EDIBLE BEANS	CWT.	18.70	17.40	15.80	21.90	18.80
<b>UNITED STATES</b>						
WHEAT, ALL	BU.	2.78	3.56	3.40	3.40	3.40
CORN FOR GRAIN	BU.	1.97	2.32	2.42	2.06	1.90
SORGHUM FOR GRAIN	CWT.	3.46	4.14	4.26	3.19	3.04
OATS	BU.	1.59	1.81	1.48	1.48	1.58
BARLEY	BU.	2.22	2.72	2.83	2.48	2.45
RYE	BU.	2.93	3.32	2.93	3.26	3.32
FLAXSEED	BU.	4.29	5.77	5.88	8.07	5.90
SOYBEANS	BU.	4.38	5.53	7.34	5.74	5.50
HAY, ALL	TON	96.50	92.40	85.50	92.00	98.00
SUNFLOWER, ALL	CWT.	9.62	12.10	12.10	13.70	11.50
PROSO MILLET	BU.	2.02	7.22	2.95	2.83	3.35
DRY EDIBLE BEANS	CWT.	22.10	17.10	18.40	25.70	18.40

1/ MARKETING YEAR AVERAGE PRICES RECEIVED BY FARMERS ARE BASED ON MONTHLY PRICES WEIGHTED BY MONTHLY MARKETINGS DURING SPECIFIC PERIODS. PRICES DO NOT INCLUDE ALLOWANCE FOR CCC LOANS OUTSTANDING, PURCHASES BY THE GOVERNMENT, OR DEFICIENCY PAYMENTS. 2/ PRELIMINARY. NA = NOT AVAILABLE.

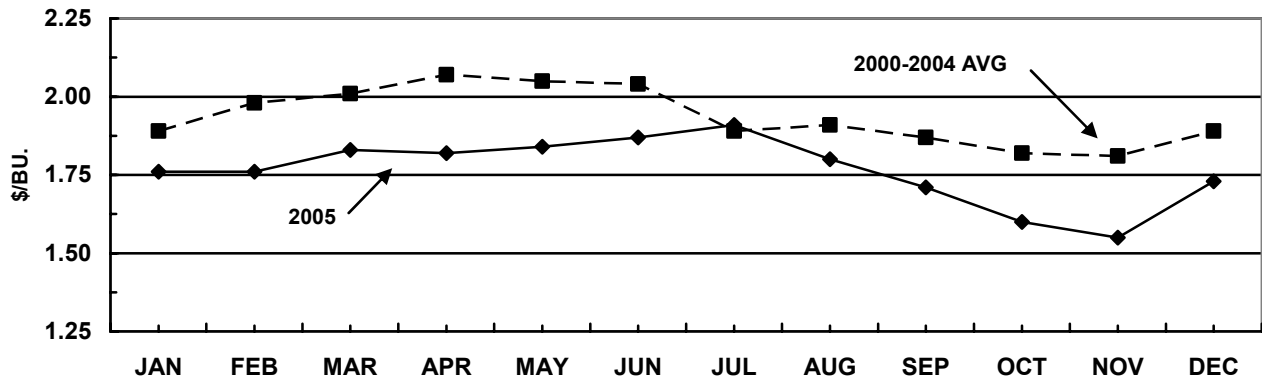
**CROP PRICES RECEIVED, MONTHLY AVERAGE,  
SOUTH DAKOTA, 2004-2005**

COMMODITY	YEAR	JAN	FEB	MAR	APR	MAY	JUN	JUL	AUG	SEP	OCT	NOV	DEC
----- DOLLARS PER BUSHEL -----													
ALL WHEAT	2004	3.65	3.81	3.79	3.79	3.86	3.74	3.25	3.14	3.36	3.45	3.52	3.40
	2005	3.42	3.47	3.44	3.30	3.29	3.64	3.25	3.40	3.58	3.72	3.80	3.72
WINTER WHEAT	2004	3.54	3.64	3.60	3.65	3.67	3.60	3.22	3.10	3.15	3.12	3.23	3.17
	2005	3.29	3.19	3.24	3.12	3.16	3.20	3.06	2.99	3.26	3.45	3.39	3.56
OTHER SPRING WHEAT	2004	3.73	3.86	3.90	3.93	4.01	3.85	3.37	3.17	3.45	3.60	3.70	3.64
	2005	3.54	3.67	3.59	3.41	3.37	3.78	3.57	3.56	3.77	3.92	3.94	3.92
CORN	2004	2.29	2.49	2.66	2.87	2.90	2.83	2.29	2.20	2.05	1.92	1.76	1.80
	2005	1.76	1.76	1.83	1.82	1.84	1.87	1.91	1.80	1.71	1.60	1.55	1.73
OATS	2004	1.50	1.53	1.53	1.57	1.61	1.56	1.26	1.29	1.47	1.44	1.53	1.65
	2005	1.69	1.69	1.63	1.56	1.53	1.62	1.53	1.39	1.52	1.62	1.64	1.63
BARLEY	2004	3/	2.26	2.27	1.70	2.40	2.43	2.41	2.01	1.93	1.33	2.09	2.00
	2005	2.04	1.96	1.98	1.92	1.94	2.08	2.06	2.02	1.99	2.00	1.81	1.99
FEED BARLEY	2004	1.73	3/	3/	1.70	3/	2.10	3/	1.57	3/	1.33	3/	1.70
	2005	3/	1.70	3/	3/	1.70	3/	3/	1.26	3/	3/	1.25	1.47
MALTING BARLEY	2004	3/	2.26	2.28	3/	2.40	2.47	2.41	2.09	1.93	3/	2.09	2.02
	2005	2.04	1.97	1.98	1.92	1.95	2.08	2.06	2.03	1.99	2.00	2.01	2.06
FLAXSEED	2004	5.34	6.00	3/	6.22	6.81	3/	3/	6.21	7.25	7.92	3/	3/
	2005	3/	3/	11.90	12.20	3/	3/	3/	6.02	5.66	5.34	5.48	3/
SOYBEANS	2004	7.37	8.08	9.14	9.54	9.61	9.12	8.04	6.35	5.73	5.32	5.21	5.28
	2005	5.34	5.44	5.83	6.00	6.11	6.47	6.36	5.87	5.52	5.45	5.40	5.51
ALL SUNFLOWER 1/	2004	11.60	12.10	12.40	13.00	13.30	13.00	12.40	11.60	12.50	11.60	11.80	12.70
	2005	13.30	14.50	14.50	14.30	15.90	14.90	14.80	14.10	12.80	11.10	11.50	12.60
ALL HAY 2/	2004	59.00	62.00	62.00	62.00	63.00	66.00	65.00	58.00	60.00	63.00	64.00	66.00
	2005	62.00	60.00	61.00	61.00	60.00	62.00	61.00	59.00	64.00	59.00	64.00	60.00
ALFALFA HAY 2/	2004	62.00	64.00	64.00	63.00	64.00	67.00	67.00	62.00	64.00	67.00	68.00	69.00
	2005	65.00	62.00	63.00	62.00	61.00	63.00	62.00	62.00	68.00	63.00	67.00	63.00
OTHER HAY 2/	2004	45.00	48.00	48.00	45.00	51.00	50.00	57.00	47.00	50.00	51.00	49.00	51.00
	2005	51.00	48.00	49.00	52.00	49.00	47.00	45.00	50.00	52.00	50.00	51.00	50.00

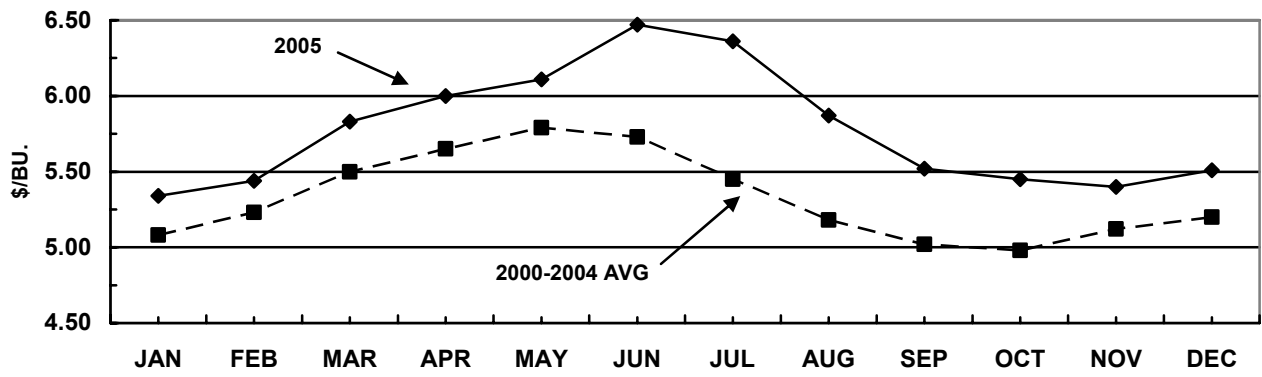
1/ DOLLARS PER CWT. 2/ DOLLARS PER TON, BALED. 3/ NO PRICE PUBLISHED.

### CROPS PRICES RECEIVED, SOUTH DAKOTA

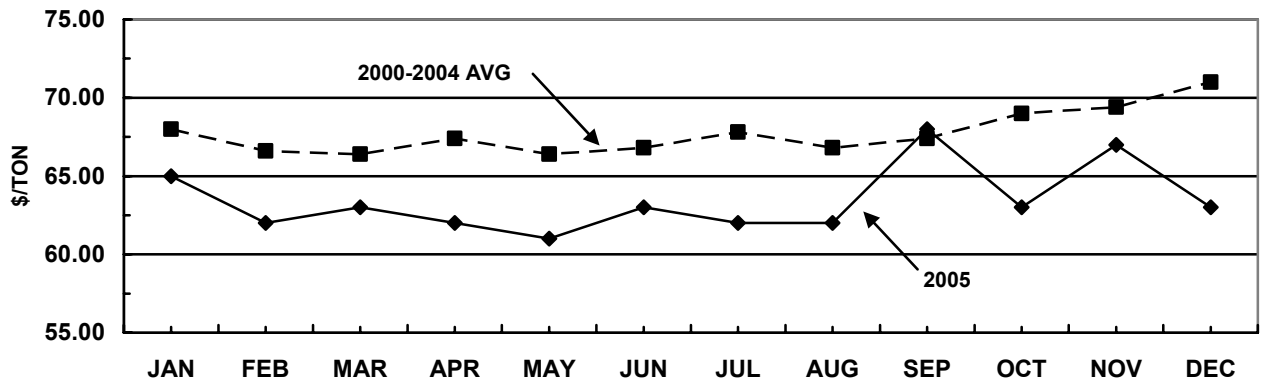
#### CORN



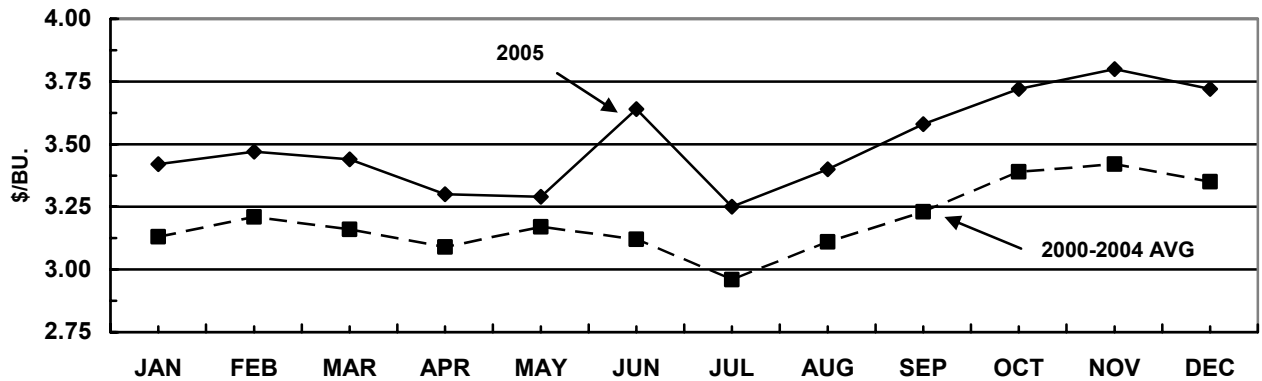
#### SOYBEANS



#### ALFALFA HAY



#### ALL WHEAT



**VALUE OF PRODUCTION PER HARVESTED ACRE,  
SOUTH DAKOTA, 1996-2005 1/**

YEAR	CORN FOR GRAIN	ALL WHEAT	BARLEY	OATS	RYE	SOYBEANS	ALL HAY	ALFALFA HAY
----- DOLLARS PER ACRE -----								
1996	231.00	147.08	113.52	111.60	138.17	240.72	147.79	185.90
1997	206.40	97.75	84.74	85.80	100.80	213.85	146.68	187.45
1998	194.81	100.55	87.36	69.01	76.00	179.40	104.04	132.00
1999	174.02	101.68	105.60	71.68	61.60	155.88	101.48	127.40
2000	180.32	106.41	106.70	67.71	61.74	149.45	115.91	137.36
2001	190.75	104.41	104.00	100.20	87.50	132.16	127.52	152.90
2002	206.15	100.53	87.85	89.55	90.45	165.23	97.55	123.00
2003	253.08	146.45	125.61	97.24	108.00	191.40	101.44	120.65
2004	236.60	154.90	127.26	122.18	171.10	189.72	110.10	136.50
2005	202.30	150.43	98.00	108.00	NA	190.80	116.24	138.68

1/ VALUE OF PRODUCTION = (MARKETING YEAR AVERAGE PRICE MULTIPLIED BY TOTAL PRODUCTION) DIVIDED BY HARVESTED ACRES.  
NA = NOT AVAILABLE.

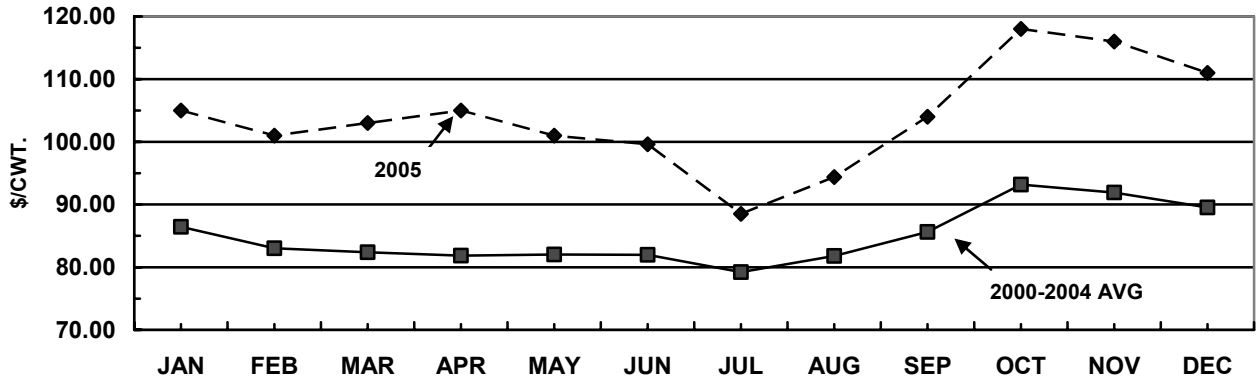
**LIVESTOCK PRICES RECEIVED,  
SOUTH DAKOTA, 2004-2005**

ITEM	YEAR	JAN	FEB	MAR	APR	MAY	JUN	JUL	AUG	SEP	OCT	NOV	DEC	ANN AVG 1/
----- DOLLARS PER HUNDREDWEIGHT -----														
ALL HOGS	2004	38.10	44.20	48.00	48.50	58.20	57.20	57.60	55.90	55.40	52.60	56.70	52.90	50.40
	2005	54.10	51.70	52.00	52.40	55.40	50.30	49.60	51.10	50.00	47.90	44.00	44.30	50.90
BARROWS & GILTS	2004	39.80	46.20	49.20	49.40	59.80	59.00	59.40	57.50	57.00	54.00	58.60	54.40	51.90
	2005	55.70	52.50	53.00	53.60	57.10	51.70	51.90	52.90	51.40	48.80	45.20	45.40	52.30
SOWS	2004	26.50	31.10	36.90	40.00	45.10	46.40	47.20	46.00	43.30	42.60	43.90	41.20	39.70
	2005	43.70	44.30	42.80	41.20	41.80	41.10	36.80	39.70	40.00	40.90	35.70	35.80	40.60
BEEF CATTLE	2004	84.40	80.00	85.80	86.10	89.30	89.60	85.50	90.90	97.20	103.00	94.20	86.00	89.30
	2005	95.90	95.60	98.50	99.30	93.90	90.50	80.30	87.70	97.90	110.00	104.00	94.90	95.90
STEERS & HEIFERS	2004	92.60	86.60	89.90	91.20	97.20	100.00	94.60	97.70	103.00	109.00	104.00	99.60	97.50
	2005	105.00	101.00	103.00	105.00	101.00	99.60	88.50	94.40	104.00	118.00	116.00	111.00	104.00
COWS	2004	44.60	47.50	49.00	51.90	53.10	54.80	58.30	55.50	54.70	52.00	49.70	47.10	51.20
	2005	51.50	52.30	58.00	60.80	61.40	60.00	55.70	52.60	52.90	49.60	49.50	49.10	54.00
CALVES	2004	114.00	111.00	118.00	116.00	122.00	134.00	125.00	143.00	134.00	130.00	129.00	127.00	125.00
	2005	131.00	132.00	137.00	138.00	135.00	139.00	129.00	132.00	139.00	141.00	143.00	143.00	137.00
SHEEP	2004	44.90	44.00	34.40	36.80	35.50	29.50	39.50	40.20	41.40	42.10	43.50	49.60	40.90
	2005	58.60	53.90	51.50	44.20	42.20	41.40	39.60	43.80	44.30	44.70	44.70	50.70	45.90
LAMBS	2004	115.00	117.00	115.00	106.00	112.00	114.00	109.00	114.00	115.00	115.00	121.00	120.00	115.00
	2005	125.00	131.00	117.00	124.00	134.00	130.00	128.00	125.00	133.00	132.00	136.00	123.00	130.00

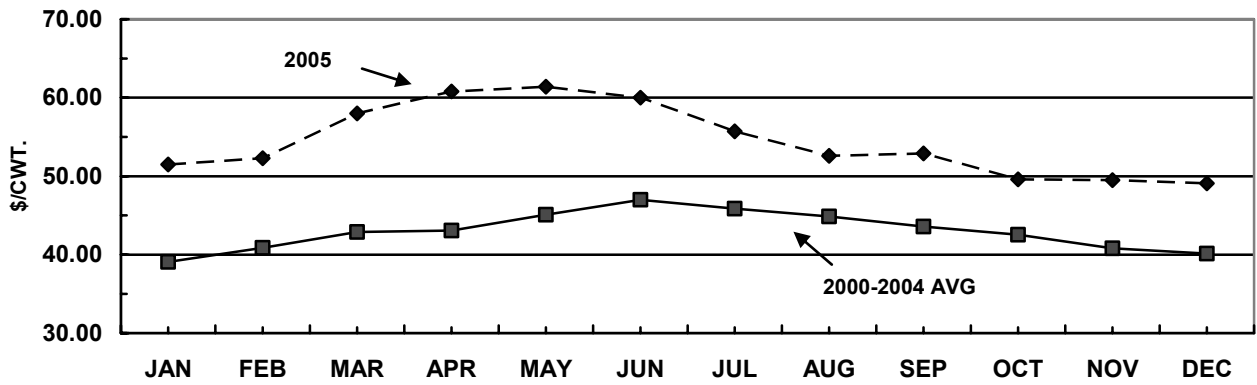
1/ MONTHLY PRICES WEIGHTED BY ESTIMATED SALES IN EACH MONTH.

## LIVESTOCK PRICES RECEIVED, SOUTH DAKOTA

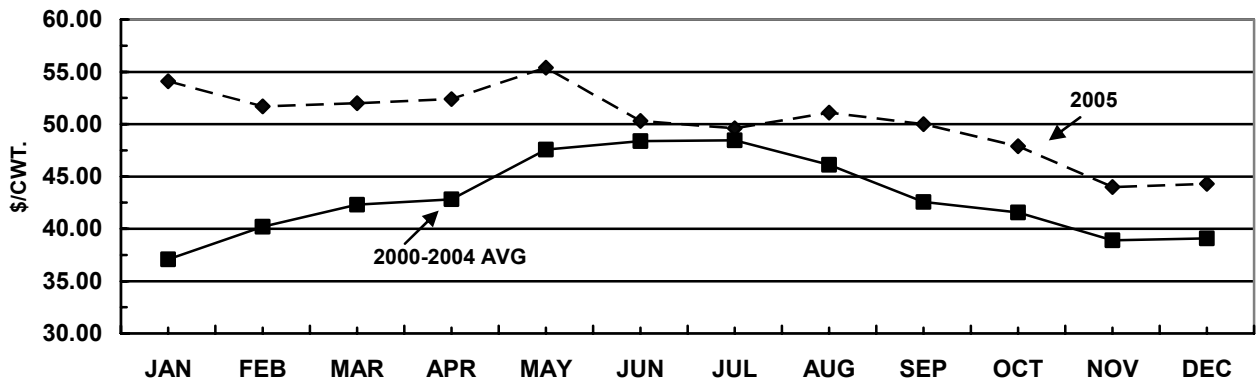
### STEERS AND HEIFERS



### COWS



### HOGS



### LAMBS

