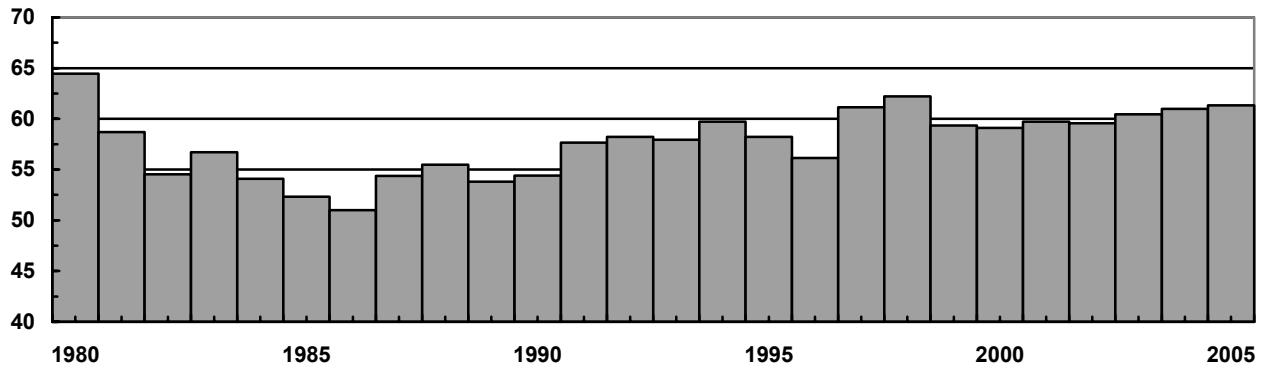


**HOG INVENTORY,
UNITED STATES, 2001-2006**

YEAR AND MONTH	ALL HOGS AND PIGS	KEPT FOR BREEDING	MARKET	MARKET HOGS & PIGS BY WEIGHT GROUPS			
				UNDER 60 LBS.	60-119 LBS.	120-179 LBS.	180 LBS. & OVER
----- 1,000 HEAD -----							
2001							
MAR 1	57,546	6,224	51,322	18,754	12,430	10,800	9,338
JUN 1	58,525	6,178	52,347	19,900	12,945	10,531	8,971
SEP 1	59,699	6,155	53,544	19,923	13,361	10,849	9,411
DEC 1	59,722	6,201	53,521	19,903	12,877	10,755	9,986
2002							
MAR 1	59,256	6,230	53,026	19,560	12,938	11,148	9,380
JUN 1	60,391	6,208	54,183	20,226	13,539	10,906	9,512
SEP 1	60,753	6,051	54,702	20,038	13,632	11,113	9,919
DEC 1	59,554	6,058	53,496	19,485	13,033	10,875	10,103
2003							
MAR 1	58,183	6,027	52,156	19,086	12,639	10,915	9,516
JUN 1	59,602	6,026	53,576	20,433	12,952	10,828	9,363
SEP 1	61,009	5,938	55,071	20,438	13,739	11,384	9,510
DEC 1	60,444	6,009	54,434	19,778	13,238	11,109	10,311
2004							
MAR 1	59,520	5,961	53,558	19,823	12,954	11,205	9,578
JUN 1	60,698	5,937	54,760	20,292	13,500	11,256	9,714
SEP 1	61,519	5,962	55,556	20,729	13,613	11,235	9,981
DEC 1	60,975	5,969	55,005	19,980	13,439	11,186	10,401
2005							
MAR 1	59,699	5,941	53,757	19,667	13,087	11,360	9,644
JUN 1	60,732	5,977	54,754	20,423	13,376	11,143	9,813
SEP 1	61,846	5,972	55,873	20,764	13,876	11,404	9,830
DEC 1	61,327	6,011	55,316	19,955	13,502	11,291	10,569
2006							
MAR 1	60,104	6,025	54,079	19,838	13,114	11,317	9,811

**HOG INVENTORY,
UNITED STATES, DECEMBER 1, 1980-2005**

MIL. HEAD



**HOGS AND PIGS, PRODUCTION, DISPOSITION, AND INCOME,
UNITED STATES, 2001-2005**

YEAR	NUMBER ON HAND DECEMBER 1 1/	PIG CROP	INSHIPMENTS 2/	MARKETINGS	FARM SLAUGHTER	DEATHS	NUMBER ON HAND DECEMBER 1
----- 1,000 HEAD -----							
2001	59,110	100,617	26,745	119,272	119	7,360	59,722
2002	59,722	101,678	29,434	124,013	114	7,152	59,554
2003	59,554	101,490	31,543	124,383	116	7,646	60,444
2004	60,444	102,781	32,888	127,563	114	7,462	60,975
2005	60,975	103,858	33,416	129,056	109	7,757	61,327

1/ PRECEDING YEAR. 2/ LIVESTOCK SHIPPED INTO STATES FOR FEEDING OR BREEDING, EXCLUDES ANIMALS BROUGHT IN FOR IMMEDIATE SLAUGHTER.

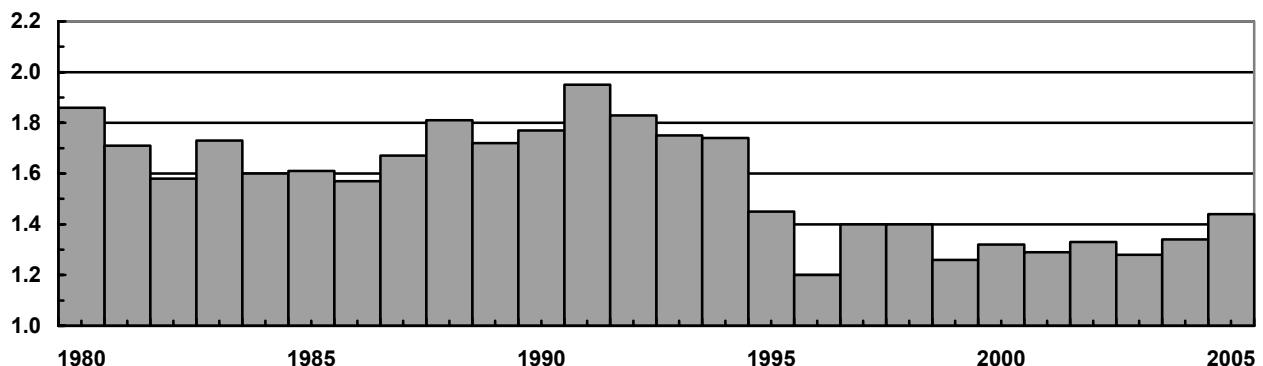
YEAR	PRODUCTION	MARKETINGS	AVERAGE PRICE PER 100 LBS.	CASH RECEIPTS	VALUE OF HOME CONSUMPTION	GROSS INCOME
----- 1,000 POUNDS ----- DOLLARS ----- 1,000 DOLLARS -----						
2001	25,866,250	26,770,892	44.40	12,394,560	35,462	12,430,022
2002	26,274,153	27,309,263	33.40	9,602,109	25,525	9,627,634
2003	26,260,140	27,173,703	37.20	10,618,027	27,774	10,645,801
2004	26,689,257	27,745,036	49.30	14,332,729	36,499	14,369,228
2005	27,489,344	28,462,375	50.20	15,037,068	35,145	15,072,213

**HOG INVENTORY,
SOUTH DAKOTA, 2001-2006**

YEAR AND MONTH	ALL HOGS AND PIGS	KEPT FOR BREEDING	MARKET	MARKET HOGS & PIGS BY WEIGHT GROUPS			
				UNDER 60 LBS.	60-119 LBS.	120-179 LBS.	180 LBS. & OVER
----- 1,000 HEAD -----							
2001							
MAR 1	1,270	135	1,135	390	300	245	200
JUN 1	1,270	140	1,130	430	280	245	175
SEP 1	1,280	140	1,140	395	290	260	195
DEC 1	1,290	145	1,145	410	290	250	195
2002							
MAR 1	1,270	150	1,120	375	295	265	185
JUN 1	1,270	140	1,130	405	300	250	175
SEP 1	1,320	140	1,180	400	320	270	190
DEC 1	1,330	140	1,190	370	310	280	230
2003							
MAR 1	1,300	145	1,155	380	295	270	210
JUN 1	1,330	145	1,185	380	305	280	220
SEP 1	1,290	135	1,155	380	310	275	190
DEC 1	1,280	145	1,135	385	250	280	220
2004							
MAR 1	1,250	145	1,105	385	245	265	210
JUN 1	1,230	145	1,085	370	290	250	175
SEP 1	1,220	140	1,080	390	270	240	180
DEC 1	1,340	140	1,200	410	300	260	230
2005							
MAR 1	1,360	145	1,215	430	295	270	220
JUN 1	1,400	145	1,255	465	320	250	220
SEP 1	1,380	140	1,240	440	315	255	230
DEC 1	1,480	165	1,315	440	325	290	260
2006							
MAR 1	1,440	155	1,285	445	310	280	250

**HOG INVENTORY,
SOUTH DAKOTA, DECEMBER 1, 1980-2005**

MIL. HEAD



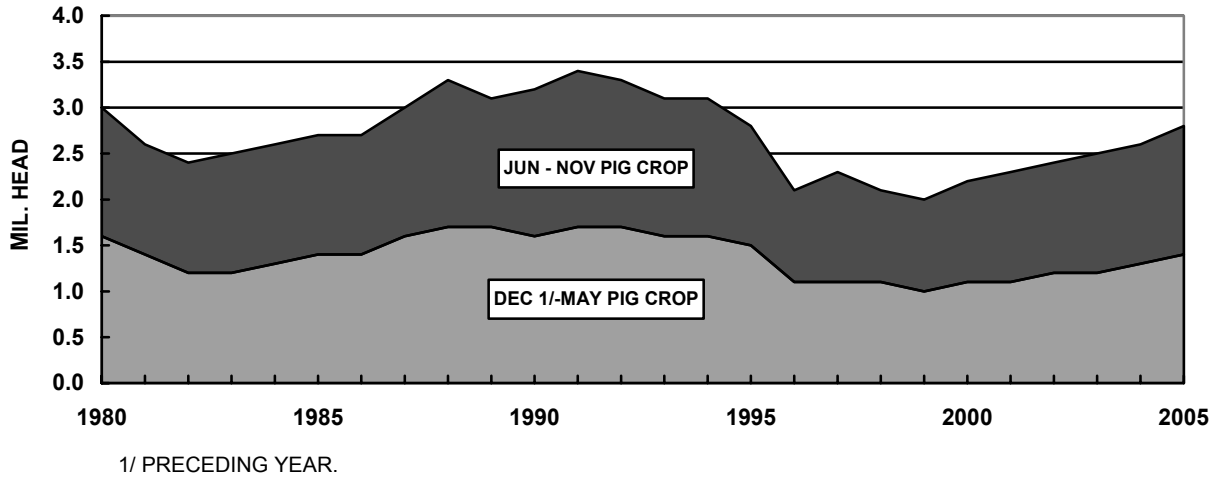
**HOGS AND PIGS, PRODUCTION, DISPOSITION, AND INCOME,
SOUTH DAKOTA, 2001-2005**

YEAR	NUMBER ON HAND DECEMBER 1 1/	PIG CROP	INSHIPMENTS 2/	MARKETINGS	FARM SLAUGHTER	DEATHS	NUMBER ON HAND DECEMBER 1
----- 1,000 HEAD -----							
2001	1,320	2,352	910	3,179	3.0	110	1,290
2002	1,290	2,403	970	3,225	2.5	106	1,330
2003	1,330	2,486	900	3,314	2.5	120	1,280
2004	1,280	2,587	932	3,331	2.5	126	1,340
2005	1,340	2,786	930	3,419	2.5	155	1,480

1/ PRECEDING YEAR. 2/ LIVESTOCK SHIPPED INTO STATE FOR FEEDING OR BREEDING, EXCLUDES ANIMALS BROUGHT IN FOR IMMEDIATE SLAUGHTER.

YEAR	PRODUCTION	MARKETINGS	AVERAGE PRICE PER 100 LBS.	CASH RECEIPTS	VALUE OF HOME CONSUMPTION	GROSS INCOME
----- 1,000 POUNDS ----- DOLLARS ----- 1,000 DOLLARS -----						
2001	612,385	659,000	45.40	320,539	1,341	321,880
2002	608,553	642,440	34.60	243,872	966	244,838
2003	604,406	654,640	38.60	274,685	1,097	275,782
2004	614,709	648,878	50.40	353,672	1,865	355,537
2005	644,131	653,986	50.90	368,622	1,755	370,377

PIG CROP, SOUTH DAKOTA, 1980-2005



SOWS FARROWED, PIGS PER LITTER, AND PIG CROP, SOUTH DAKOTA, 2003-2005

QUARTER	2003			2004			2005				
	SOWS FARROWED	PIGS PER LITTER	PIG CROP	SOWS FARROWED	PIGS PER LITTER	PIG CROP	SOWS FARROWED	PIGS PER LITTER	PIG CROP		
	1,000 HEAD	NUMBER	---	1,000 HEAD	---	NUMBER	---	1,000 HEAD	---	NUMBER	1,000 HEAD
DEC 1/ - FEB	64	9.05	579	70	9.20	644	72	9.40	677		
MAR-MAY	68	9.10	619	70	9.40	658	75	9.30	698		
JUN-AUG	70	9.30	651	68	9.30	632	71	9.40	667		
SEP-NOV	70	9.10	637	71	9.20	653	80	9.30	744		
TOTAL	272	9.14	2,486	279	9.27	2,587	298	9.35	2,786		

1/ PRECEDING YEAR.

HOG SLAUGHTER, NUMBER AND AVERAGE LIVWEIGHT, SOUTH DAKOTA, 2001-2005 1/

YEAR	JAN	FEB	MAR	APR	MAY	JUN	JUL	AUG	SEP	OCT	NOV	DEC	TOTAL
	1,000 HEAD												
2001	359.0	311.8	368.3	335.0	318.2	285.2	312.0	358.5	346.0	391.3	350.5	347.2	4,082.8
2002	365.4	315.0	342.1	352.1	359.4	329.4	346.0	395.4	395.5	426.5	346.4	333.1	4,306.4
2003	411.9	353.0	373.8	356.7	374.6	340.8	382.3	376.0	357.4	418.7	377.3	467.3	4,589.6
2004	446.4	348.4	366.9	351.2	291.3	338.0	358.9	407.2	417.6	456.9	444.4	463.8	4,690.9
2005	360.8	363.0	402.5	360.3	361.0	405.1	349.0	405.8	423.0	444.4	439.7	457.1	4,771.8
	POUNDS												
2001	261	259	259	261	258	257	250	250	256	259	262	266	258
2002	262	261	260	262	261	262	264	257	261	258	260	261	261
2003	265	265	263	263	262	261	258	255	256	261	263	264	261
2004	265	263	261	260	259	258	254	257	259	260	259	262	260
2005	261	263	263	265	263	261	260	256	257	260	264	265	262

1/ INCLUDES SLAUGHTER IN FEDERALLY INSPECTED AND IN OTHER SLAUGHTER PLANTS, BUT EXCLUDES ANIMALS SAUGHTERED ON FARMS.