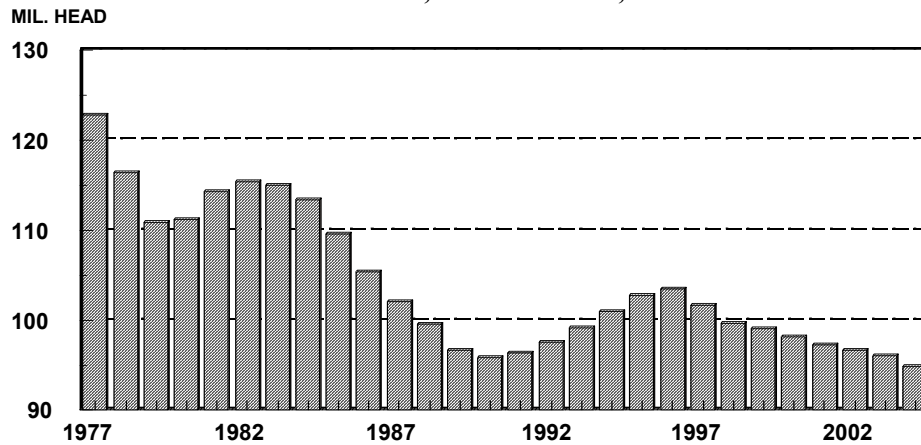


**CATTLE INVENTORY,<sup>1/</sup>  
UNITED STATES, 1998-2004**

| ITEM                                   | 1998                   |         | 1999   |         | 2000   |         | 2001   |         | 2002   |         | 2003   |         | 2004   |
|--|------------------------|---------|--------|---------|--------|---------|--------|---------|--------|---------|--------|---------|--------|
|  | JAN 1                  | JUL 1   | JAN 1  | JUL 1   | JAN 1  | JUL 1   | JAN 1  | JUL 1   | JAN 1  | JUL 1   | JAN 1  | JUL 1   | JAN 1  |
|  | ----- 1,000 HEAD ----- |         |        |         |        |         |        |         |        |         |        |         |        |
| ALL CATTLE                             | 99,744                 | 107,700 | 99,115 | 107,000 | 98,199 | 106,300 | 97,298 | 105,800 | 96,723 | 105,100 | 96,100 | 103,900 | 94,882 |
| COWS & HEIFERS THAT HAVE CALVED        | 43,084                 | 43,600  | 42,878 | 43,300  | 42,758 | 43,200  | 42,570 | 43,000  | 42,239 | 42,900  | 42,125 | 42,700  | 41,851 |
| BEEF                                   | 33,885                 | 34,400  | 33,750 | 34,150  | 33,575 | 33,950  | 33,398 | 33,900  | 33,134 | 33,750  | 32,983 | 33,600  | 32,860 |
| MILK                                   | 9,199                  | 9,200   | 9,128  | 9,150   | 9,183  | 9,250   | 9,172  | 9,100   | 9,106  | 9,150   | 9,142  | 9,100   | 8,991  |
| HEIFERS OVER 500 LBS.                  | 19,800                 | 16,700  | 19,774 | 16,600  | 19,650 | 16,500  | 19,776 | 16,400  | 19,683 | 16,200  | 19,628 | 15,900  | 19,341 |
| BEEF REPLACEMENT                       | 5,764                  | 5,000   | 5,535  | 4,800   | 5,503  | 4,700   | 5,588  | 4,600   | 5,571  | 4,600   | 5,624  | 4,600   | 5,517  |
| MILK REPLACEMENT                       | 3,986                  | 3,600   | 4,069  | 3,700   | 4,000  | 3,700   | 4,057  | 3,600   | 4,055  | 3,700   | 4,114  | 3,600   | 4,020  |
| OTHER                                  | 10,051                 | 8,100   | 10,170 | 8,100   | 10,147 | 8,100   | 10,131 | 8,200   | 10,057 | 7,900   | 9,891  | 7,700   | 9,804  |
| STEERS OVER 500 LBS.                   | 17,189                 | 14,600  | 16,891 | 14,400  | 16,682 | 14,300  | 16,461 | 14,600  | 16,804 | 14,500  | 16,554 | 14,200  | 16,280 |
| BULLS OVER 500 LBS.                    | 2,270                  | 2,200   | 2,281  | 2,200   | 2,293  | 2,100   | 2,274  | 2,100   | 2,244  | 2,100   | 2,248  | 2,100   | 2,206  |
| STEERS, HEIFERS & BULLS UNDER 500 LBS. | 17,401                 | 30,600  | 17,290 | 30,500  | 16,816 | 30,200  | 16,216 | 29,700  | 15,753 | 29,400  | 15,545 | 29,000  | 15,204 |
| CALVES BORN DURING YEAR                | 38,812                 |         | 38,796 |         | 38,631 |         | 38,300 |         | 38,224 |         | 37,903 |         |        |
| TOTAL CATTLE ON FEED                   | 13,608                 |         | 13,284 |         | 14,073 |         | 14,276 |         | 14,050 |         | 13,220 |         | 13,811 |

1/ TOTALS MAY NOT ADD DUE TO ROUNDING.

**CATTLE INVENTORY,  
UNITED STATES, JANUARY 1, 1977-2004**



**CATTLE AND**

| YEAR                   | NUMBER ON HAND BEGINNING OF YEAR | CALF CROP | INSHIPMENTS 1/ | MARKETINGS |        | FARM SLAUGHTER | DEATHS |        | NUMBER ON HAND END OF YEAR |
|------------------------|----------------------------------|-----------|----------------|------------|--------|----------------|--------|--------|----------------------------|
|                        |                                  |           |                | CATTLE     | CALVES |                | CATTLE | CALVES |                            |
| ----- 1,000 HEAD ----- |                                  |           |                |            |        |                |        |        |                            |
| 1998                   | 99,744                           | 38,812    | 21,928         | 47,440     | 9,506  | 214            | 1,668  | 2,541  | 99,115                     |
| 1999                   | 99,115                           | 38,796    | 22,836         | 48,683     | 9,540  | 213            | 1,658  | 2,455  | 98,199                     |
| 2000                   | 98,199                           | 38,631    | 23,448         | 48,986     | 9,693  | 203            | 1,711  | 2,387  | 97,298                     |
| 2001                   | 97,298                           | 38,300    | 21,813         | 47,102     | 9,183  | 194            | 1,722  | 2,487  | 96,723                     |
| 2002                   | 96,723                           | 38,224    | 21,522         | 46,804     | 9,296  | 193            | 1,710  | 2,366  | 96,100                     |
| 2003                   | 96,100                           | 37,903    | 22,384         | 47,683     | 9,595  | 191            | 1,710  | 2,326  | 94,882                     |

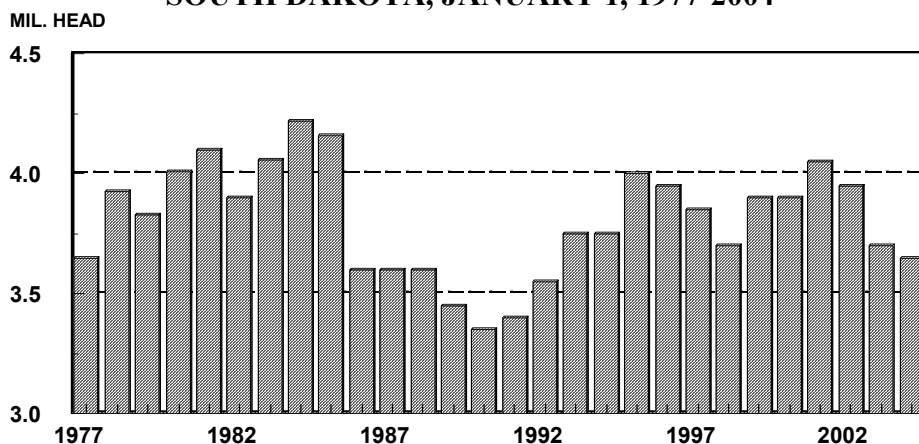
1/ LIVESTOCK SHIPPED INTO STATES FOR FEEDING OR BREEDING. EXCLUDES ANIMALS BROUGHT IN FOR IMMEDIATE SLAUGHTER.

| YEAR   | PRODUCTION | MARKETINGS | AVERAGE PRICE PER 100 LBS. |        | CASH RECEIPTS | VALUE OF HOME CONSUMPTION | GROSS INCOME |
|--|------------|------------|----------------------------|--------|---------------|---------------------------|--------------|
|  |            |            | CATTLE                     | CALVES |               |                           |              |
| ----- 1,000 POUNDS -----      ----- DOLLARS -----      ----- 1,000 DOLLARS ----- |            |            |                            |        |               |                           |              |
| 1998   | 41,698,894 | 55,326,431 | 59.60                      | 78.80  | 33,442,843    | 304,406                   | 33,747,249   |
| 1999   | 42,578,262 | 56,842,215 | 63.40                      | 87.70  | 36,568,554    | 330,862                   | 36,899,416   |
| 2000   | 43,040,893 | 57,550,019 | 68.60                      | 104.00 | 40,783,472    | 366,744                   | 41,150,216   |
| 2001   | 42,581,294 | 55,527,524 | 71.30                      | 106.00 | 40,540,645    | 362,317                   | 40,902,962   |
| 2002   | 42,409,258 | 56,141,324 | 66.50                      | 96.40  | 38,095,116    | 333,768                   | 38,428,884   |
| 2003   | 42,243,717 | 56,765,518 | 79.70                      | 102.00 | 45,094,883    | 370,533                   | 45,465,416   |

**CATTLE INVENTORY,  
SOUTH DAKOTA, JANUARY 1, 1998-2004**

| ITEM                                   | 1998  | 1999  | 2000  | 2001  | 2002  | 2003  | 2004  |
|--|-------|-------|-------|-------|-------|-------|-------|
| ALL CATTLE                             | 3,700 | 3,900 | 3,900 | 4,050 | 3,950 | 3,700 | 3,650 |
| COWS & HEIFERS THAT HAVE CALVED        | 1,720 | 1,780 | 1,830 | 1,900 | 1,890 | 1,780 | 1,790 |
| BEEF                                   | 1,619 | 1,683 | 1,734 | 1,807 | 1,803 | 1,696 | 1,711 |
| MILK                                   | 101   | 97    | 96    | 93    | 87    | 84    | 79    |
| HEIFERS OVER 500 LBS.                  | 780   | 810   | 860   | 920   | 870   | 790   | 795   |
| BEEF REPLACEMENT                       | 260   | 265   | 280   | 310   | 300   | 290   | 290   |
| MILK REPLACEMENT                       | 25    | 35    | 40    | 30    | 30    | 30    | 35    |
| OTHER                                  | 495   | 510   | 540   | 580   | 540   | 470   | 470   |
| STEERS OVER 500 LBS.                   | 670   | 750   | 710   | 780   | 750   | 730   | 670   |
| BULLS OVER 500 LBS.                    | 80    | 90    | 95    | 100   | 95    | 90    | 90    |
| STEERS, HEIFERS & BULLS UNDER 500 LBS. | 450   | 470   | 405   | 350   | 345   | 310   | 305   |
| CALVES BORN DURING YEAR                | 1,720 | 1,780 | 1,850 | 1,850 | 1,840 | 1,730 | --    |
| TOTAL CATTLE ON FEED                   | 310   | 370   | 360   | 385   | 370   | 395   | 375   |

**CATTLE INVENTORY,  
SOUTH DAKOTA, JANUARY 1, 1977-2004**



**CATTLE**

**AND CALVES, PRODUCTION, DISPOSITION, AND INCOME,**

| YEAR                   | NUMBER ON HAND BEGINNING OF YEAR | CALF CROP | INSHIPMENTS 1/ | MARKETINGS |        | FARM SLAUGHTER | DEATHS |        | NUMBER ON HAND END OF YEAR |
|------------------------|----------------------------------|-----------|----------------|------------|--------|----------------|--------|--------|----------------------------|
|                        |                                  |           |                | CATTLE     | CALVES |                | CATTLE | CALVES |                            |
| ----- 1,000 HEAD ----- |                                  |           |                |            |        |                |        |        |                            |
| 1998                   | 3,700                            | 1,720     | 431            | 1,378      | 400    | 3              | 60     | 110    | 3,900                      |
| 1999                   | 3,900                            | 1,780     | 460            | 1,619      | 463    | 3              | 55     | 100    | 3,900                      |
| 2000                   | 3,900                            | 1,850     | 541            | 1,610      | 469    | 2              | 60     | 100    | 4,050                      |
| 2001                   | 4,050                            | 1,850     | 514            | 1,780      | 502    | 2              | 60     | 120    | 3,950                      |
| 2002                   | 3,950                            | 1,840     | 472            | 1,860      | 537    | 2              | 58     | 105    | 3,700                      |
| 2003                   | 3,700                            | 1,730     | 498            | 1,647      | 479    | 2              | 55     | 95     | 3,650                      |

1/ LIVESTOCK SHIPPED INTO STATE FOR FEEDING OR BREEDING. EXCLUDES ANIMALS BROUGHT IN FOR IMMEDIATE SLAUGHTER.

| YEAR | PRODUCTION               | MARKETINGS | AVERAGE PRICE PER 100 LBS. |        | CASH RECEIPTS             | VALUE OF HOME CONSUMPTION | GROSS INCOME |
|------|--------------------------|------------|----------------------------|--------|---------------------------|---------------------------|--------------|
|      |                          |            | CATTLE                     | CALVES |                           |                           |              |
|      | ----- 1,000 POUNDS ----- |            | ----- DOLLARS -----        |        | ----- 1,000 DOLLARS ----- |                           |              |
|      | 1998                     | 1,439,223  | 1,529,000                  | 61.80  | 85.10                     | 982,202                   | 8,265        |
| 1999 | 1,545,647                | 1,795,200  | 69.00                      | 92.00  | 1,281,284                 | 9,451                     | 1,290,735    |
| 2000 | 1,626,944                | 1,787,600  | 75.50                      | 108.00 | 1,410,608                 | 10,754                    | 1,421,362    |
| 2001 | 1,553,999                | 1,970,800  | 76.50                      | 106.00 | 1,566,898                 | 10,748                    | 1,577,646    |
| 2002 | 1,557,488                | 2,064,800  | 69.60                      | 96.20  | 1,494,238                 | 10,605                    | 1,504,843    |
| 2003 | 1,473,357                | 1,838,600  | 78.70                      | 107.00 | 1,501,201                 | 2,131                     | 1,503,332    |

**CATTLE ON FEED, 1,000+ CAPACITY FEEDLOTS,  
SOUTH DAKOTA, 2002-2003**

| MONTH        | ON FEED                |      | PLACEMENTS |      | MARKETINGS |      | OTHER DISAPPEARANCE |      |
|--------------|------------------------|------|------------|------|------------|------|---------------------|------|
|              | 2002                   | 2003 | 2002       | 2003 | 2002       | 2003 | 2002                | 2003 |
|              | ----- 1,000 HEAD ----- |      |            |      |            |      |                     |      |
| JANUARY      | 195                    | 215  | 46         | 46   | 38         | 45   | 3                   | 1    |
| FEBRUARY     | 200                    | 215  | 45         | 40   | 34         | 39   | 1                   | 1    |
| MARCH        | 210                    | 215  | 44         | 39   | 33         | 43   | 1                   | 1    |
| APRIL        | 220                    | 210  | 28         | 31   | 32         | 29   | 1                   | 2    |
| MAY          | 215                    | 210  | 26         | 34   | 34         | 44   | 2                   | 2    |
| JUNE         | 205                    | 198  | 18         | 27   | 47         | 55   | 1                   | 3    |
| JULY         | 175                    | 167  | 18         | 21   | 30         | 38   | 3                   | 2    |
| AUGUST       | 160                    | 148  | 27         | 30   | 38         | 43   | 1                   | 1    |
| SEPTEMBER    | 148                    | 134  | 49         | 49   | 43         | 37   | 1                   | 1    |
| OCTOBER      | 153                    | 145  | 59         | 68   | 36         | 34   | 1                   | 2    |
| NOVEMBER     | 175                    | 177  | 56         | 54   | 30         | 30   | 1                   | 1    |
| DECEMBER     | 200                    | 200  | 43         | 31   | 27         | 30   | 1                   | 1    |
| ANNUAL TOTAL | --                     | --   | 459        | 470  | 422        | 467  | 17                  | 18   |

**CATTLE SLAUGHTER,<sup>1/</sup> NUMBER AND AVERAGE LIVEWEIGHT,  
SOUTH DAKOTA, 1998-2003**

| YEAR | JAN                    | FEB   | MAR   | APR   | MAY   | JUN   | JUL   | AUG   | SEP   | OCT   | NOV   | DEC   | TOTAL |
|------|------------------------|-------|-------|-------|-------|-------|-------|-------|-------|-------|-------|-------|-------|
|      | ----- 1,000 HEAD ----- |       |       |       |       |       |       |       |       |       |       |       |       |
| 1998 | 25.2                   | 20.2  | 19.7  | 20.2  | 19.2  | 19.8  | 19.2  | 19.2  | 19.9  | 21.2  | 21.8  | 23.6  | 249.3 |
| 1999 | 22.5                   | 21.4  | 24.4  | 23.7  | 22.6  | 24.3  | 23.1  | 24.0  | 23.7  | 22.3  | 24.4  | 26.1  | 282.5 |
| 2000 | 25.0                   | 23.5  | 24.9  | 19.8  | 24.2  | 24.8  | 19.8  | 22.5  | 20.8  | 24.8  | 27.9  | 27.8  | 285.8 |
| 2001 | 28.5                   | 25.5  | 28.2  | 25.3  | 27.3  | 26.3  | 24.8  | 27.9  | 24.2  | 29.7  | 29.0  | 27.2  | 324.1 |
| 2002 | 26.5                   | 12.4  | 12.9  | 13.8  | 13.4  | 14.0  | 14.3  | 14.2  | 13.3  | 16.8  | 15.8  | 16.1  | 183.5 |
| 2003 | 2/                     | 2/    | 2/    | 2/    | 2/    | 2/    | 2/    | 2/    | 2/    | 2/    | 2/    | 2/    | 2/    |
|      | ----- POUNDS -----     |       |       |       |       |       |       |       |       |       |       |       |       |
| 1998 | 1,231                  | 1,291 | 1,325 | 1,329 | 1,326 | 1,352 | 1,333 | 1,340 | 1,332 | 1,354 | 1,294 | 1,273 | 1,313 |
| 1999 | 1,326                  | 1,369 | 1,402 | 1,391 | 1,365 | 1,359 | 1,377 | 1,383 | 1,416 | 1,384 | 1,378 | 1,385 | 1,378 |
| 2000 | 1,432                  | 1,434 | 1,437 | 1,411 | 1,424 | 1,388 | 1,404 | 1,407 | 1,404 | 1,390 | 1,371 | 1,369 | 1,405 |
| 2001 | 1,404                  | 1,417 | 1,411 | 1,406 | 1,366 | 1,393 | 1,378 | 1,395 | 1,383 | 1,385 | 1,372 | 1,379 | 1,391 |
| 2002 | 1,386                  | 1,286 | 1,286 | 1,266 | 1,244 | 1,256 | 1,239 | 1,258 | 1,240 | 1,241 | 1,224 | 1,267 | 1,273 |
| 2003 | 2/                     | 2/    | 2/    | 2/    | 2/    | 2/    | 2/    | 2/    | 2/    | 2/    | 2/    | 2/    | 2/    |
|      | YEARLY AVERAGE         |       |       |       |       |       |       |       |       |       |       |       |       |

1/ INCLUDES SLAUGHTER IN FEDERALLY INSPECTED AND IN OTHER SLAUGHTER PLANTS BUT EXCLUDES ANIMALS SLAUGHTERED ON FARMS.

2/ CATTLE SLAUGHTER NOT PUBLISHED.

**FEEDLOTS AND FED CATTLE MARKETED,  
SOUTH DAKOTA, 1998-2003**

| YEAR | FEEDLOT CAPACITY |                 |             |                 |             |                 |             |                 |               |                 |            |                 |
|------|------------------|-----------------|-------------|-----------------|-------------|-----------------|-------------|-----------------|---------------|-----------------|------------|-----------------|
|      | UNDER 1,000      |                 | 1,000-1,999 |                 | 2,000-3,999 |                 | 4,000-7,999 |                 | OVER 8,000 1/ |                 | TOTAL      |                 |
|      | LOTS             | CATTLE MARKETED | LOTS        | CATTLE MARKETED | LOTS        | CATTLE MARKETED | LOTS        | CATTLE MARKETED | LOTS          | CATTLE MARKETED | LOTS       | CATTLE MARKETED |
|      | 1,000 HEAD       |                 | 1,000 HEAD  |                 | 1,000 HEAD  |                 | 1,000 HEAD  |                 | 1,000 HEAD    |                 | 1,000 HEAD |                 |
| 1998 | 3,500            | 210             | 54          | 51              | 43          | 82              | 17          | 80              | 7             | 118             | 3,621      | 541             |
| 1999 | 3,200            | 290             | 54          | 65              | 43          | 95              | 19          | 95              | 7             | 111             | 3,323      | 656             |
| 2000 | 3,300            | 260             | 50          | 62              | 43          | 96              | 21          | 111             | 6             | 115             | 3,420      | 644             |
| 2001 | 3,200            | 270             | 59          | 72              | 44          | 106             | 18          | 100             | 7             | 112             | 3,328      | 660             |
| 2002 | 3,100            | 270             | 71          | 90              | 48          | 120             | 20          | 108             | 7             | 104             | 3,246      | 692             |
| 2003 | 3,100            | 270             | 73          | 95              | 53          | 146             | 17          | 87              | 9             | 139             | 3,252      | 737             |

1/ LOTS AND MARKETINGS FROM LARGER SIZE GROUPS ARE COMBINED TO AVOID DISCLOSING INDIVIDUAL OPERATIONS.