



United States Department of Agriculture
National Agricultural Statistics Service
Southern Region News Release
Cattle Inventory



Cooperating with the Alabama Department of Agriculture and Industries, Florida Department of Agriculture and Consumer Services, Georgia Department of Agriculture, and South Carolina Department of Agriculture
Southern Regional Field Office · 355 East Hancock Avenue, Suite 100 · Athens, GA 30601 · (706) 713-5400
www.nass.usda.gov

This report contains the results from the **January 2022 Cattle Report**. Our thanks to all who responded to this survey.

January 31, 2022

Media Contact: Anthony Prillaman

US Cattle Inventory Down 2 Percent

Inventory of all cattle and calves in the United States, as of January 1, 2022, totaled 91.9 million head, down 2 percent from the 93.8 million head on January 1, 2021. All cows and heifers that have calved, at 39.5 million head, were 2 percent below the 40.3 million head on January 1, 2021. Beef cows, at 30.1 million head, were down 2 percent from a year ago. Milk cows, at 9.38 million head, were down 1 percent from the previous year. Alabama all cattle and calves totaled 1.26 million head; 3 percent lower than January 1, 2021. Florida inventory decreased 4 percent from the previous year to 1.63 million head. All cattle and calves in Georgia totaled 1.05 million head, down 4 percent from 2021. South Carolina inventory, at 310,000 head, was down 6 percent from the previous year.

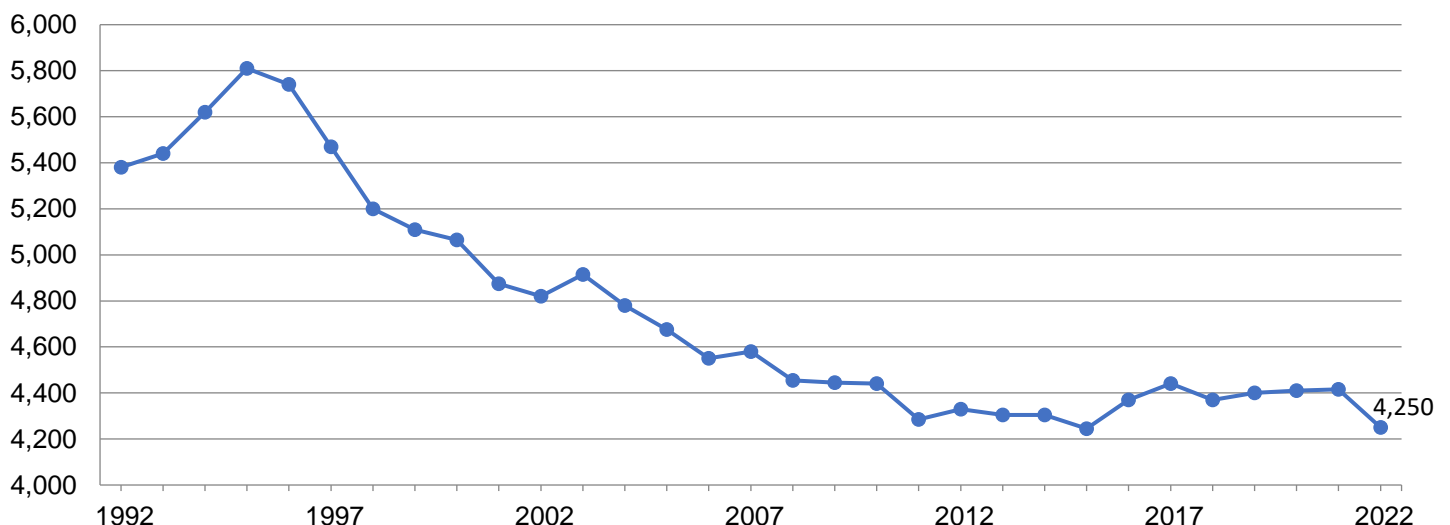
Cattle and Calves – States and United States: January 1, 2021 and 2022

State	Cattle and calves		
	2021	2022	Percent of previous year
	(1,000 head)	(1,000 head)	(percent)
Alabama	1,295.0	1,260.0	97
Florida	1,700.0	1,630.0	96
Georgia.....	1,090.0	1,050.0	96
South Carolina.....	330.0	310.0	94
United States	93,789.5	91,901.6	98

Source: USDA National Agricultural Statistics Service - [Cattle](#), January 2022

Southern Region All Cattle Inventory: 1992-2022

Thousand Head



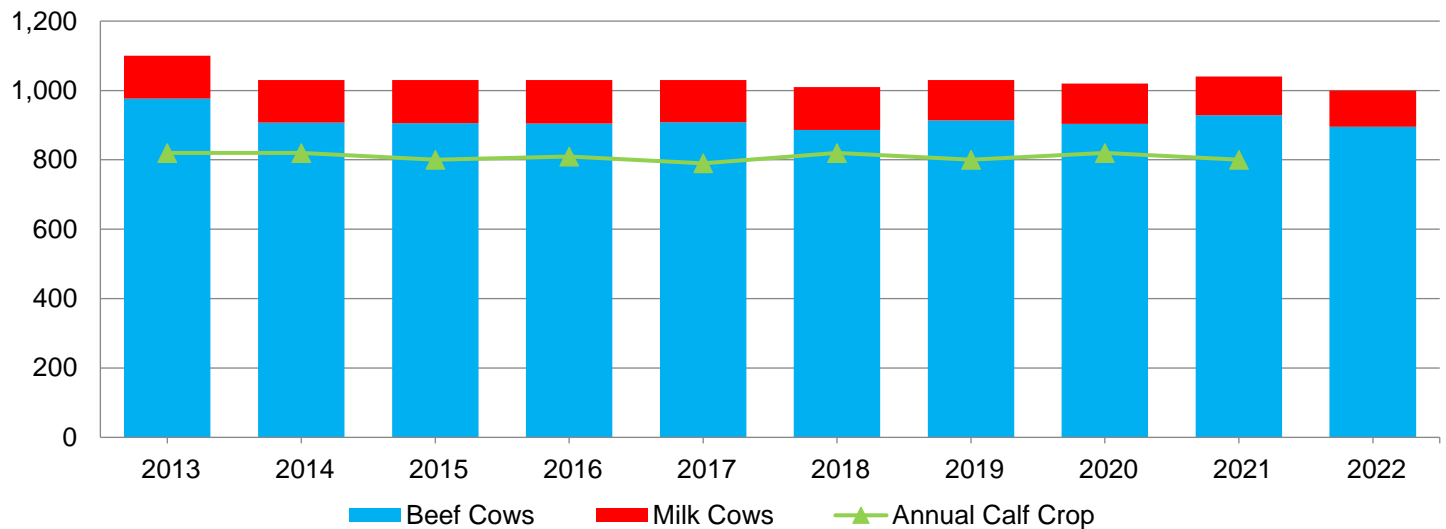
All Cows That Have Calved by Type – States and United States: January 1, 2021 and 2022

State	All cows			Beef cows			Milk cows		
	2021	2022	Percent of previous year	2021	2022	Percent of previous year	2021	2022	Percent of previous year
	(1,000 head)	(1,000 head)	(percent)	(1,000 head)	(1,000 head)	(percent)	(1,000 head)	(1,000 head)	(percent)
Alabama.....	700.0	680.0	97	697.0	677.0	97	3.0	3.0	100
Florida.....	1,040.0	1,000.0	96	929.0	895.0	96	111.0	105.0	95
Georgia.....	580.0	570.0	98	499.0	487.0	98	81.0	83.0	102
South Carolina ...	176.0	167.0	95	166.0	158.0	95	10.0	9.0	90
United States	40,286.0	39,500.1	98	30,843.6	30,125.1	98	9,442.4	9,375.0	99

Source: USDA National Agricultural Statistics Service - [Cattle](#), January 2022

Florida Cow Inventory and Calf Crop

Thousand Head



Heifers 500 Pounds and Over by Type – States and United States: January 1, 2021 and 2022

State	Beef replacements			Milk replacements			Other heifers		
	2021	2022	Percent of previous year	2021	2022	Percent of previous year	2021	2022	Percent of previous year
	(1,000 head)	(1,000 head)	(percent)	(1,000 head)	(1,000 head)	(percent)	(1,000 head)	(1,000 head)	(percent)
Alabama.....	103.0	108.0	105	2.0	2.0	100	50.0	50.0	100
Florida.....	130.0	130.0	100	30.0	30.0	100	25.0	20.0	80
Georgia.....	100.0	100.0	100	30.0	25.0	83	25.0	25.0	100
South Carolina ...	32.0	29.0	91	6.0	5.0	83	9.0	9.0	100
United States	5,803.1	5,611.5	97	4,608.5	4,450.6	97	9,788.5	9,713.9	99

Source: USDA National Agricultural Statistics Service - [Cattle](#), January 2022

Steers, Bulls, and Calves – States and United States: January 1, 2021 and 2022

State	Steers 500 pounds and over			Bulls 500 pounds and over			Calves under 500 pounds		
	2021	2022	Percent of previous year	2021	2022	Percent of previous year	2021	2022	Percent of previous year
	(1,000 head)	(1,000 head)	(percent)	(1,000 head)	(1,000 head)	(percent)	(1,000 head)	(1,000 head)	(percent)
Alabama.....	50.0	47.0	94	45.0	43.0	96	345.0	330.0	96
Florida.....	35.0	25.0	71	55.0	55.0	100	385.0	370.0	96
Georgia.....	43.0	40.0	93	32.0	30.0	94	280.0	260.0	93
South Carolina ...	13.0	11.0	85	13.0	12.0	92	81.0	77.0	95
United States	16,787.8	16,579.7	99	2,210.5	2,109.6	95	14,305.1	13,936.2	97

Source: USDA National Agricultural Statistics Service - [Cattle](#), January 2022