



# 2017 Wheat Varieties

## HIGHLIGHTS

SY Ingmar is the leading spring wheat variety in North Dakota for 2017. SY Ingmar accounts for 17.8 percent of the 5.25 million acres of spring wheat planted in 2017. SY Soren now ranks second with 10.8 percent of the spring wheat acreage. Linkert represents 6.9 percent of the spring wheat planted and ranks third. Barlow ranks fourth with 6.8 percent of the spring wheat acres planted. Elgin-ND accounts for 5.6 percent of the spring wheat acreage and ranks fifth. These top five varieties account for 47.9 percent of the spring wheat planted in 2017. North Dakota continues to rank first in spring wheat acreage in the United States, with 48.2 percent of the nation's estimated 10.9 million acres planted.

Joppa is the leading Durum wheat variety in North Dakota for 2017. It takes over this position from Divide which had been the leading variety planted the previous eight years. Joppa accounts for 18.0 percent of the 1.12 million acres planted compared with 10.3 in 2016 and 0.9 percent in 2015. Divide now ranks second with 16.8 percent of the Durum wheat acres planted. Cario and Alkabo rank third and fourth, respectively, with 14.9 and 11.1 percent of the Durum wheat acres planted. Tioga ranks fifth with 7.9 percent. These top five varieties account for 68.7 percent of the Durum wheat acreage in North Dakota for 2017. North Dakota continues to rank first in Durum wheat planted acreage in the United States with 58.4 percent of the nation's estimated 1.92 million acres planted.

WB Matlock is now the leading winter wheat variety planted for 2017 as it accounts for 12.2 percent of the winter wheat acreage in North Dakota. It takes over this position from Jerry which had been the leading variety planted the previous 13 years. SY Wolf and Decade rank second and third, respectively, with 11.4 and 6.9 percent of the winter wheat acres planted. Jerry now ranks fourth with 5.7 percent of the winter wheat acreage planted in North Dakota. These top four varieties account for 36.2 percent of the 65,000 acres planted in North Dakota for 2017.

## SURVEY DESCRIPTION

The data in this report are based on a survey of wheat producers conducted during June by the North Dakota Field Office of USDA's National Agricultural Statistics Service. **Thank you to each person who supplied data and made this report possible!**

Results include acreage and percentages at the State and Agricultural Statistics District levels. All variety acreage numbers in this publication are based on survey averages. Highly reliable state averages are produced from 2,360 positive reports from 4,100 respondents. At the district level, the number of reports for minor varieties is generally limited. Thus, yearly fluctuations in the district variety acreage may be the result of sample variation.

The ND Wheat Commission, the ND Ag Experiment Station, and the ND State Seed Department provided

funding for this survey. The NDSU Extension Service provided variety descriptions. Access to this report is available for free online at [www.ndwheat.com](http://www.ndwheat.com) or [www.nass.usda.gov/nd/](http://www.nass.usda.gov/nd/) For further questions, please contact the North Dakota Wheat Commission at (701) 328-5111 or NASS at (800) 582-6443.

## SPRING WHEAT

**SY Ingmar** is the top variety in North Dakota for 2017 with 17.8 percent of the 5.25 million acres of spring wheat planted. It is the leading spring wheat variety planted in the northwest, north central, west central, central, and south central districts. SY Ingmar was released by Syngenta/AgriPro in 2014 and has semi-dwarf height, strong straw strength, high grain protein, and good milling and baking quality.

**SY Soren** ranks second with 10.8 percent of the spring wheat planted. Released in 2011 by Syngenta/AgriPro, SY Soren has semi-dwarf height, strong straw strength, medium-early maturity, high test weight, and good milling and baking quality.

**Linkert** ranks third with 6.9 percent of the spring wheat acreage. It is the leading spring wheat variety in the northeast and east central districts. Released by the University of Minnesota in 2013, Linkert has strong straw strength, medium-early maturity, high grain protein, average test weight, and excellent milling and baking quality.

**Barlow** is the fourth leading variety with 6.8 percent of the spring wheat acreage. Released in 2009 by NDSU, Barlow has semi-dwarf height, medium-strong straw strength, medium-early maturity, high test weight, and good milling and baking quality.

**Spring Wheat Varieties, Percent of Acreage Planted  
North Dakota: 2013-2017**

Variety	2013	2014	2015	2016	2017	
					Per- cent	Acres planted
	(percent)	(percent)	(percent)	(percent)		(1,000)
SY Ingmar .....	-	-	3.1	11.5	17.8	936.7
SY Soren.....	9.2	10.4	12.1	15.4	10.8	566.5
Linkert .....	-	0.1	1.0	4.0	6.9	361.0
Barlow .....	18.0	15.7	12.6	8.0	6.8	354.4
Elgin-ND.....	0.2	2.7	10.8	8.7	5.6	291.4
SY Valda .....	-	-	-	1.7	5.0	263.8
Glenn .....	10.1	8.2	6.5	7.9	4.9	257.2
Prosper .....	8.8	11.7	10.5	6.6	4.5	236.5
Faller .....	9.0	8.8	8.3	7.3	3.8	200.5
Bolles .....	-	-	-	0.5	3.3	175.3
WB Mayville .....	2.7	4.4	4.6	3.1	3.1	163.0
Rollag.....	0.8	1.5	1.5	3.0	2.9	150.6
Velva.....	0.4	1.3	1.2	1.4	1.5	76.4
Brennan .....	3.8	3.2	2.9	1.5	1.2	62.1
Mott.....	2.1	2.9	1.1	1.2	1.1	59.5
SY Rowyn .....	-	0.5	1.9	1.0	1.0	50.7
Vantage.....	2.8	1.9	1.3	1.0	0.7	39.3
Kelby .....	4.3	1.9	1.2	1.3	0.7	36.6
Steele-ND .....	1.7	1.7	0.9	0.4	0.6	31.9
Breaker .....	0.7	0.8	0.4	0.8	0.5	27.7
Unknown varieties	3.1	6.5	4.7	5.6	8.6	449.4
Other varieties.....	22.3	15.8	13.4	8.1	8.7	459.5
All varieties .....						5,250.0

- Represents zero.

# SPRING WHEAT (Continued)

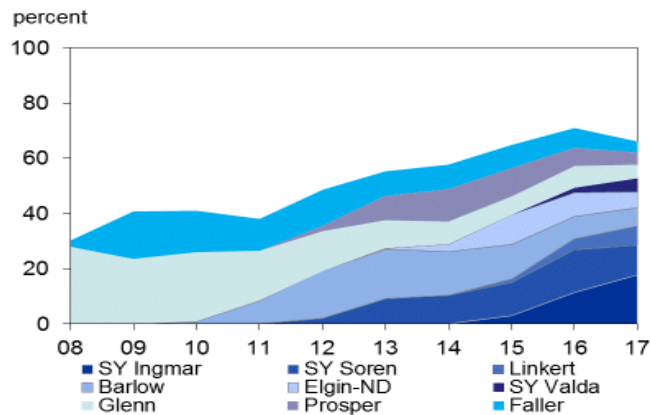
## Spring Wheat Varieties, Percent and Acreage Planted North Dakota: 2017

(Percentages may not add to 100 due to rounding.)

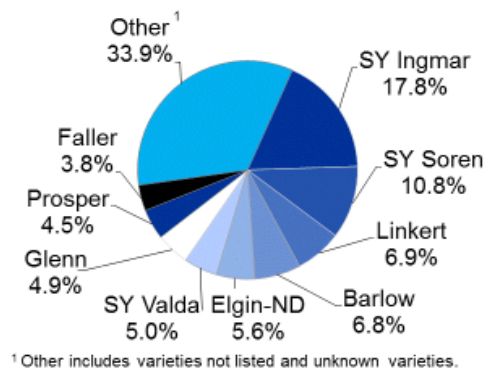
Variety	Northwest	North Central	Northeast	West Central	Central	East Central	Southwest	South Central	Southeast	State
	(percent)	(percent)	(percent)	(percent)	(percent)	(percent)	(percent)	(percent)	(percent)	(percent)
SY Ingmar.....	30.7	24.0	12.1	17.5	19.5	10.2	12.9	25.2	9.9	17.8
SY Soren .....	7.4	13.5	1.4	14.6	18.6	6.5	14.7	15.9	13.5	10.8
Linkert.....	1.1	6.1	15.9	0.3	5.3	22.8	-	0.2	10.1	6.9
Barlow.....	11.2	6.2	0.8	10.4	5.0	1.0	17.1	2.8	2.0	6.8
Elgin-ND .....	1.2	3.5	1.1	7.9	8.0	1.5	16.4	8.0	0.5	5.6
SY Valda.....	2.6	8.5	8.4	1.5	4.6	6.8	0.2	6.6	6.1	5.0
Glenn.....	9.4	3.1	1.0	6.8	4.8	-	8.5	8.3	2.1	4.9
Prosper.....	2.0	9.1	6.8	0.5	4.3	5.8	0.4	1.5	11.5	4.5
Faller.....	0.4	1.4	14.2	-	2.9	2.4	-	0.9	3.9	3.8
Bolles.....	3.2	3.5	3.6	2.6	6.7	2.9	0.4	1.0	9.5	3.3
WB Mayville.....	-	0.7	9.5	1.6	0.3	10.1	-	-	3.1	3.1
Rollag.....	1.3	4.0	6.5	1.4	1.1	8.4	-	-	1.2	2.9
Velva.....	1.8	1.6	1.5	1.4	0.6	0.6	2.7	0.9	0.8	1.5
Brennan.....	0.5	1.1	-	4.8	0.6	0.3	1.5	1.9	0.1	1.2
Mott.....	0.3	-	-	2.3	-	-	5.2	0.8	0.2	1.1
SY Rowyn.....	5.0	-	0.4	0.3	1.4	-	0.9	-	0.1	1.0
Vantage.....	-	-	0.9	0.8	1.2	0.2	1.4	0.3	2.1	0.7
Kelby.....	0.2	0.6	0.1	3.6	-	-	0.2	0.8	1.3	0.7
Steele-ND.....	0.9	-	-	-	-	-	2.6	1.4	-	0.6
Breaker.....	1.5	0.7	0.1	-	0.1	-	0.4	1.7	0.6	0.5
Unknown varieties.....	10.8	7.4	7.0	11.7	7.1	8.1	5.2	12.7	11.2	8.6
Other varieties.....	8.3	5.0	8.8	10.0	7.9	12.3	9.2	9.0	10.3	8.7
	(1,000 acres)	(1,000 acres)	(1,000 acres)	(1,000 acres)	(1,000 acres)	(1,000 acres)	(1,000 acres)	(1,000 acres)	(1,000 acres)	(1,000 acres)
SY Ingmar.....	187.5	155.9	126.6	98.6	85.9	38.6	101.0	108.4	34.2	936.7
SY Soren .....	45.0	88.0	14.8	82.3	81.8	24.7	115.0	68.4	46.5	566.5
Linkert.....	6.8	39.9	166.9	1.7	23.2	86.8	-	0.7	35.0	361.0
Barlow.....	68.3	40.4	8.3	58.9	22.2	3.8	133.5	12.1	6.9	354.4
Elgin-ND .....	7.5	22.9	11.2	44.9	35.2	5.7	127.7	34.6	1.7	291.4
SY Valda.....	16.1	55.2	87.7	8.3	20.2	25.8	1.3	28.3	20.9	263.8
Glenn.....	57.5	20.4	10.4	38.4	21.1	-	66.5	35.6	7.2	257.2
Prosper.....	12.2	59.1	71.8	3.0	19.1	22.1	2.9	6.6	39.7	236.5
Faller.....	2.7	9.1	149.3	-	12.7	9.3	-	3.9	13.5	200.5
Bolles.....	19.8	22.8	37.4	14.8	29.5	11.0	2.8	4.4	32.8	175.3
WB Mayville.....	-	4.3	99.9	8.9	1.1	38.2	-	-	10.6	163.0
Rollag.....	7.9	25.9	68.0	7.7	4.9	32.1	-	-	4.1	150.6
Velva.....	10.9	10.1	15.3	7.7	2.6	2.3	20.7	4.0	2.8	76.4
Brennan.....	2.8	7.3	-	27.3	2.7	1.3	11.9	8.3	0.5	62.1
Mott.....	1.6	-	-	12.8	-	-	40.9	3.6	0.6	59.5
SY Rowyn.....	30.8	-	4.4	1.8	6.1	-	7.1	-	0.5	50.7
Vantage.....	-	-	9.7	4.7	5.4	0.6	10.6	1.1	7.2	39.3
Kelby.....	1.4	3.8	1.0	20.6	-	-	1.7	3.6	4.5	36.6
Steele-ND.....	5.4	-	-	-	-	-	20.3	6.2	-	31.9
Breaker.....	9.2	4.3	1.4	-	0.4	-	3.4	7.1	1.9	27.7
Unknown varieties.....	65.7	48.3	73.9	65.9	31.1	30.9	40.7	54.4	38.5	449.4
Other varieties.....	50.9	32.3	92.0	56.7	34.8	46.7	72.0	38.7	35.4	459.5
All varieties.....	610.0	650.0	1,050.0	565.0	440.0	380.0	780.0	430.0	345.0	5,250.0

- Represents zero.

**Spring Wheat  
Select Varieties Planted  
North Dakota: 2008-2017**



**Spring Wheat Varieties  
Percent of Acreage Planted  
North Dakota: 2017**



# DURUM WHEAT

**Joppa** is the most popular Durum wheat variety for 2017 with 18.0 percent of the 1.12 million acres of Durum wheat planted. A 2013 NDSU release, Joppa is characterized by above average height, strong straw strength, medium maturity, average test weight, and excellent overall quality

**Divide** ranks second in Durum wheat acreage planted with 16.8 percent. Released in 2005 by NDSU, Divide has above average height, strong straw strength, medium maturity, and good overall quality.

**Carpio** ranks third in Durum wheat acreage planted with 14.9 percent. A 2012 NDSU release, Carpio has average height, strong straw strength, and excellent overall quality.

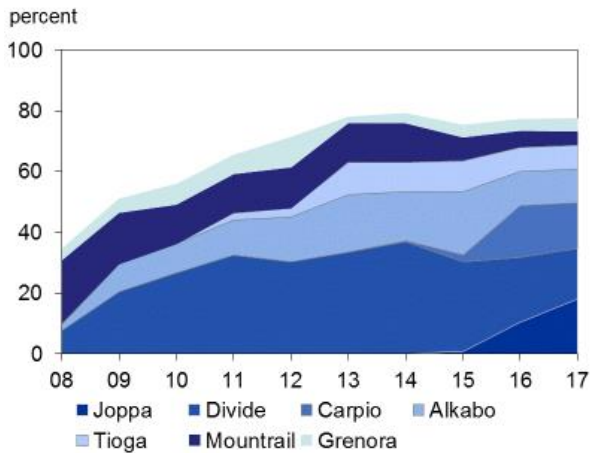
**Alkabo** ranks fourth in Durum wheat acreage planted with 11.1 percent. Released in 2005 by NDSU, Alkabo has medium height, very strong straw strength, medium maturity, and good overall quality.

**Durum Wheat Varieties, Percent of Acreage Planted North Dakota: 2013-2017**

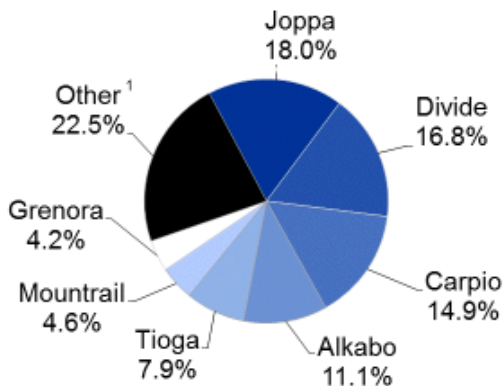
Variety	2013	2014	2015	2016	2017	
					Per-cent	Acres planted
	(percent)	(percent)	(percent)	(percent)		(1,000)
Joppa .....	-	-	0.9	10.3	18.0	201.6
Divide .....	33.4	37.0	29.5	21.5	16.8	188.3
Carpio.....	-	0.1	2.2	17.0	14.9	167.4
Alkabo .....	19.0	16.2	20.9	11.2	11.1	123.8
Tioga .....	10.7	9.7	10.1	8.0	7.9	88.4
Mountrail .....	12.7	12.9	7.6	5.5	4.6	51.4
Grenora .....	2.3	3.4	4.3	3.8	4.2	46.5
VT Peak .....	-	-	0.6	1.9	4.1	46.4
Lebsock.....	10.3	7.5	4.9	7.8	3.5	39.4
MS Dart.....	-	-	-	1.2	1.3	15.0
Kyle.....	-	-	-	-	0.7	7.8
Ben.....	1.5	1.6	1.3	0.5	0.5	6.0
Unknown varieties .	2.6	2.7	5.3	6.6	9.8	109.7
Other varieties .....	7.5	8.9	12.4	4.7	2.6	28.3
All varieties.....						1,120.0

- Represents zero.

**Durum Wheat Select Varieties Planted North Dakota: 2008-2017**



**Durum Wheat Varieties Percent of Acreage Planted North Dakota: 2017**



<sup>1</sup> Other includes varieties not listed and unknown varieties.

**Durum Wheat Varieties, Percent and Acreage Planted North Dakota: 2017**

(Percentages may not add to 100 due to rounding.)

Variety	Northwest	West Central	Southwest	Combined Districts <sup>1</sup>	State
	(percent)	(percent)	(percent)	(percent)	(percent)
Joppa .....	13.5	9.7	24.9	36.6	18.0
Divide .....	20.7	17.2	9.9	10.5	16.8
Carpio.....	14.3	18.8	22.0	2.4	14.9
Alkabo .....	10.2	17.8	4.9	16.1	11.1
Tioga .....	8.7	4.3	12.8	1.0	7.9
Mountrail.....	6.7	-	-	7.9	4.6
Grenora .....	6.0	-	-	7.4	4.2
VT Peak.....	3.8	3.9	1.4	10.2	4.1
Lebsock.....	2.9	9.1	2.8	0.8	3.5
MS Dart .....	1.3	2.8	-	1.9	1.3
Kyle .....	1.3	-	-	-	0.7
Ben.....	-	-	2.8	-	0.5
Unknown varieties .	7.6	16.5	14.4	4.4	9.8
Other varieties.....	3.1	-	4.1	0.8	2.6
	(1,000 acres)	(1,000 acres)	(1,000 acres)	(1,000 acres)	(1,000 acres)
Joppa .....	80.7	16.0	53.6	51.3	201.6
Divide .....	124.1	28.3	21.2	14.7	188.3
Carpio.....	85.8	31.0	47.3	3.3	167.4
Alkabo .....	61.4	29.3	10.5	22.6	123.8
Tioga .....	52.4	7.1	27.5	1.4	88.4
Mountrail.....	40.3	-	-	11.1	51.4
Grenora .....	36.1	-	-	10.4	46.5
VT Peak.....	22.5	6.5	3.1	14.3	46.4
Lebsock.....	17.3	15.0	6.0	1.1	39.4
MS Dart .....	7.8	4.6	-	2.6	15.0
Kyle .....	7.8	-	-	-	7.8
Ben.....	-	-	6.0	-	6.0
Unknown varieties .	45.5	27.2	30.9	6.1	109.7
Other varieties.....	18.3	-	8.9	1.1	28.3
All varieties.....	600.0	165.0	215.0	140.0	1,120.0

- Represents zero. <sup>1</sup> Data from North Central, Northeast, Central, East Central, South Central, and Southeast districts are combined to avoid disclosure of individual operations.

## WINTER WHEAT

**WB Matlock** is now the most popular winter wheat variety with 12.2 percent of the 65,000 acres of winter wheat planted. WB Matlock was released by WestBred in 2010 and has medium height, strong straw strength, medium maturity, and good overall quality.

**SY Wolf** ranks second with 11.4 percent of the winter wheat planted acres. SY Wolf was released by Syngenta/AgriPro in 2010 and has semi-dwarf height, strong straw strength, very good disease tolerance, and good test weights.

**Decade** ranks third with 6.9 percent of the planted winter wheat acreage. Decade was released by NDSU and Montana State University in 2010. It has short height, moderate straw strength, medium maturity, and good overall quality.

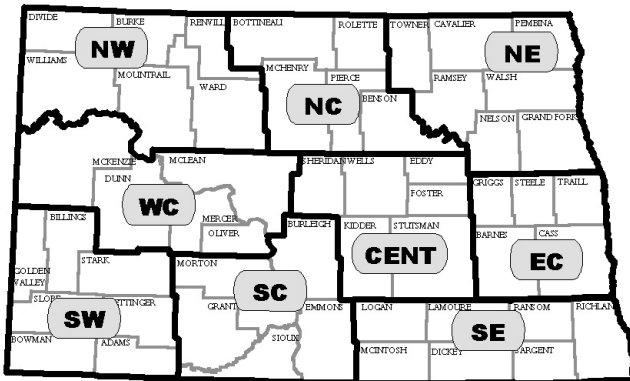
**Jerry** now ranks fourth with 5.7 percent of the winter wheat planted acres. Released in 2001 by NDSU, Jerry has medium height, strong straw strength, medium maturity and good overall quality.

**Winter Wheat Varieties, Percent of Acreage Planted North Dakota: 2013-2017**

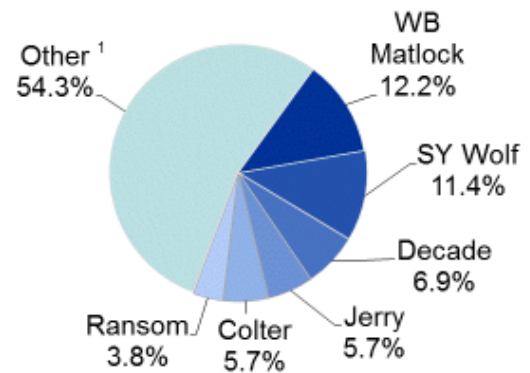
Variety	2013	2014	2015	2016	2017	
					Per-cent	Acres planted
	(percent)	(percent)	(percent)	(percent)		(1,000)
WB Matlock .....	3.2	6.9	4.9	8.7	12.2	7.9
SY Wolf .....	4.6	4.0	8.6	7.9	11.4	7.4
Decade.....	11.3	17.5	17.0	13.2	6.9	4.5
Jerry .....	31.8	25.5	21.4	15.0	5.7	3.7
Colter .....	-	-	-	-	5.7	3.7
Ransom.....	-	-	-	-	3.8	2.5
Lyman .....	0.2	-	-	3.7	3.8	2.5
CDC Falcon.....	4.6	2.6	1.2	4.6	2.8	1.8
Jagalene.....	0.7	0.6	-	-	1.8	1.2
Ideal .....	0.9	2.0	5.3	5.1	1.7	1.1
Emerson.....	-	-	-	5.8	1.4	0.9
Darrell .....	3.3	1.8	2.6	4.8	1.2	0.8
Unknown varieties	5.9	14.2	20.4	12.3	36.0	23.4
Other varieties.....	33.5	24.9	18.6	18.9	5.6	3.6
All varieties .....						65.0

- Represents zero.

**North Dakota  
Agricultural Statistics Districts**



**Winter Wheat Varieties  
Percent of Acreage Planted  
North Dakota: 2017**



<sup>1</sup> Other includes varieties not listed and unknown varieties.

